

BRI

1451

BRI

ESTABLISHED 1877. — INCORPORATED 1883.

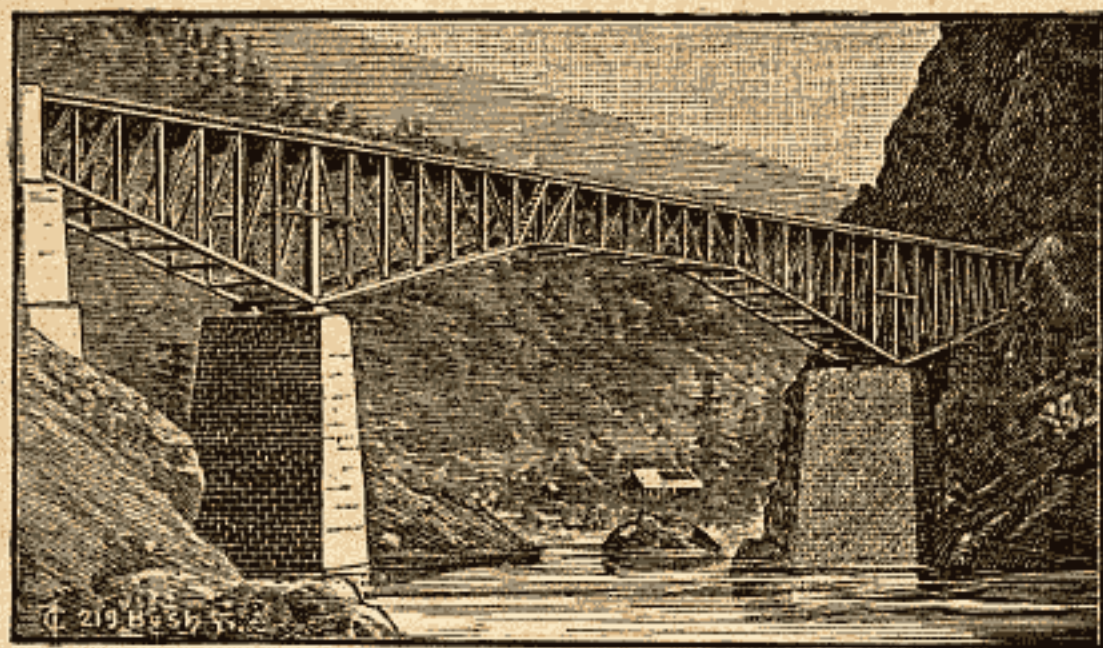
PAID UP CAPITAL, - - - - - \$250,000

THE SAN FRANCISCO BRIDGE COMPANY

Engineers and Contractors for RAILROAD and HIGHWAY BRIDGES
 of Every Description.



Steel Cantilever
 Bridge carrying
 Canadian Pacific
 Railway over
 Fraser River at
 Lytton, B. C.



Height of ma-
 sonry piers 96 ft;
 centerspan 315 ft
 Erected in 1884
 by S. F. Bridge
 Co. in 73 days.



ALSO DESIGNERS AND BUILDERS OF

IRON OR WOODEN VIADUCTS, TRUSS ROOFS and MARINE PIERS

Contractors for LARGE STONE or EARTH WORKS, Railroad and Public
 Works Generally.

OFFICE, 42 MARKET STREET, SAN FRANCISCO, CAL.

J. McMULLEN, President. WALTER STANLEY, Secretary and Treasurer. GEO. W. CATT, Chief Engineer.

FORTIN BRICK CO.

Late Point San Pedro Brick Co.

MANUFACTURERS OF PRESSED, COMMON AND MACHINE

BRICK

Kilns at Point San Pedro, Marin County, Cal., San Francisco Bay.

Office and Yard, Berry St., bet. Fifth and Sixth. - - - J. J. NORTH, Agent.

Telephone 3066. Also Office Third and Washington Streets, Oakland. Telephone 158.

DARBY LAYDON, WHARF BUILDER

Pile Driver and General Contractor.

Estimates Given on Railroad and Bridge Work of Every
 Description.

124 Howard Street, San Francisco.

MAHOOGANY and SPANISH CEDAR; JOHN WIGMORE & SON, SPEAR and HOWARD STS.