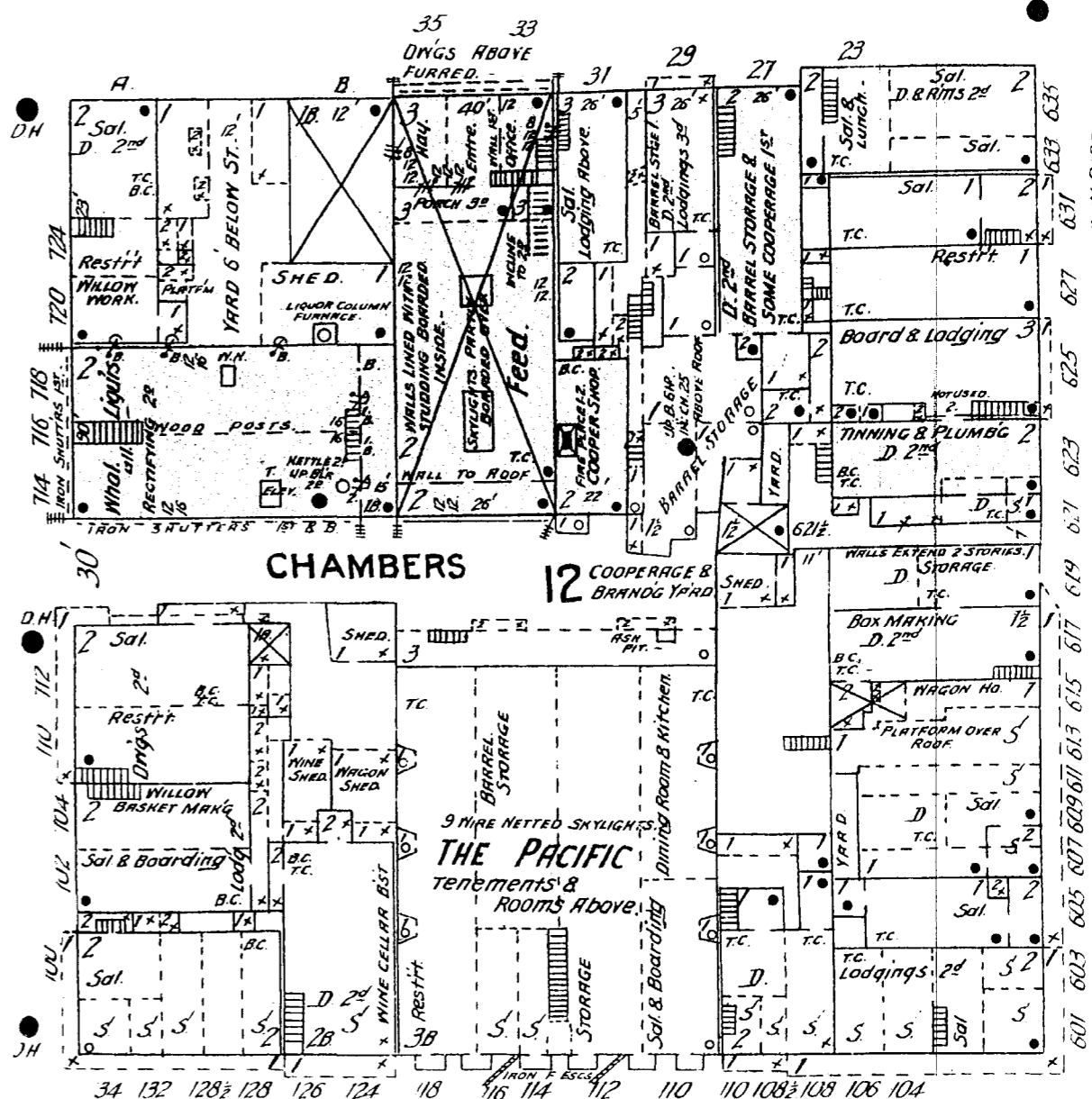
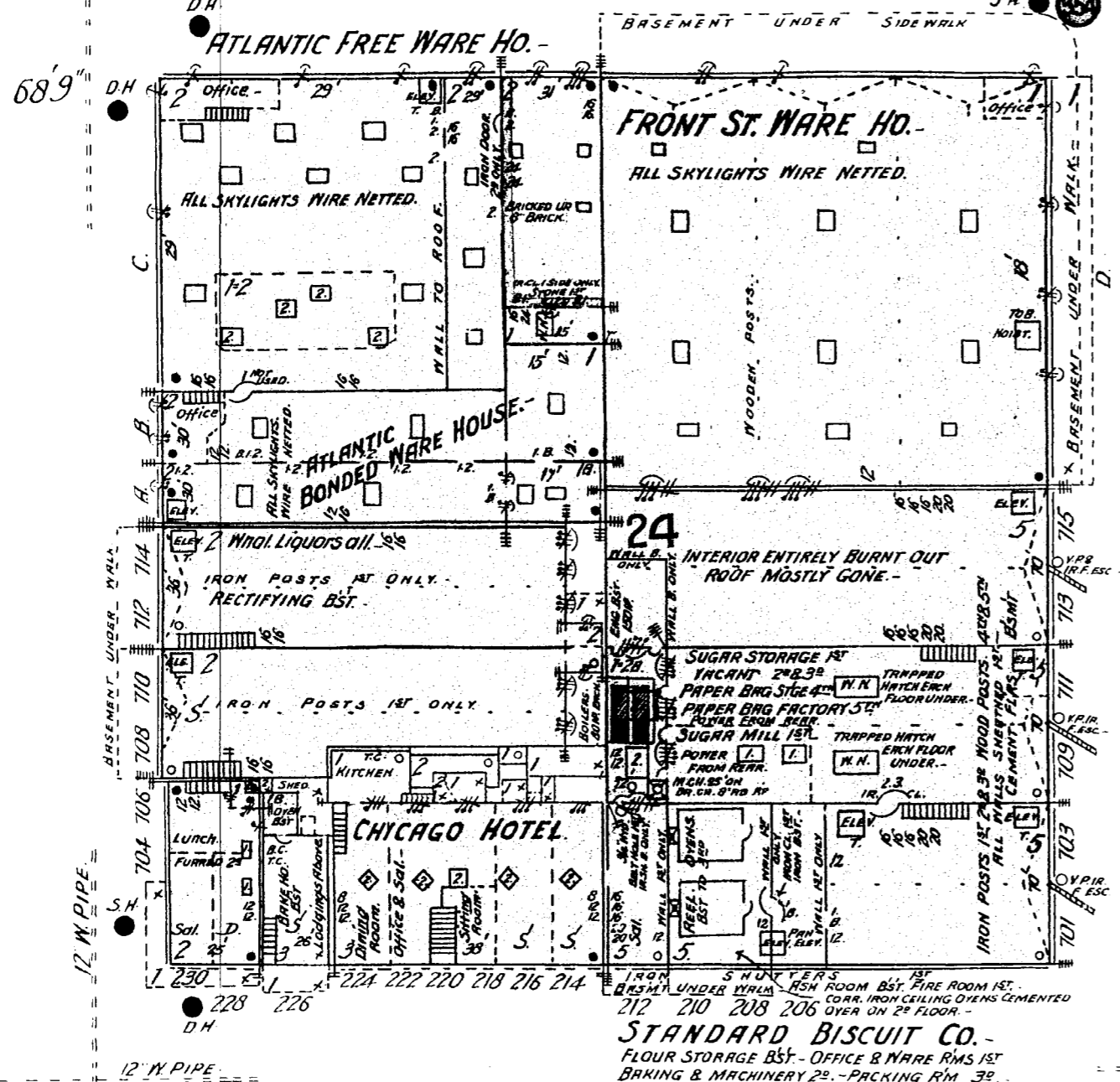


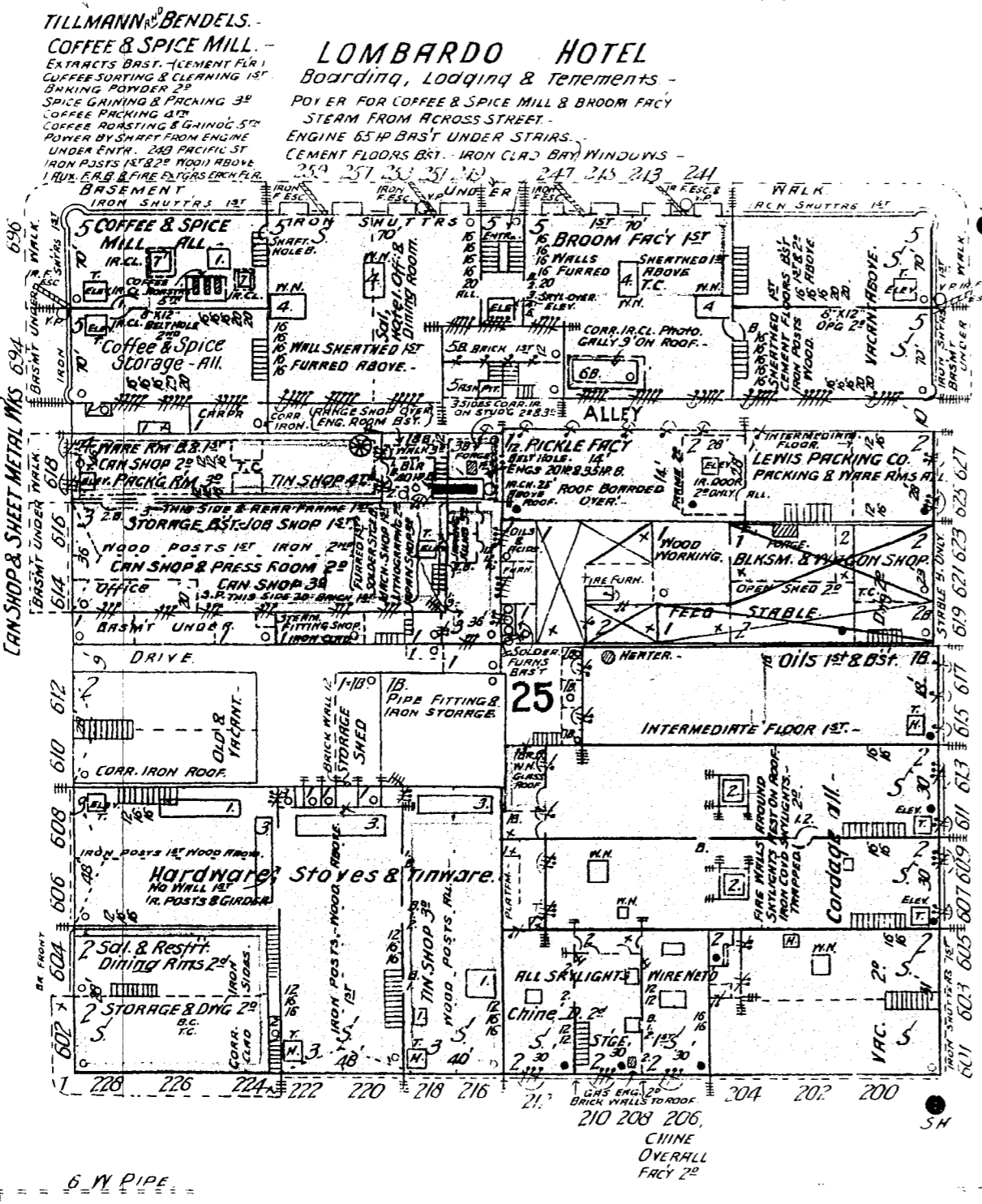
BROADWAY

20

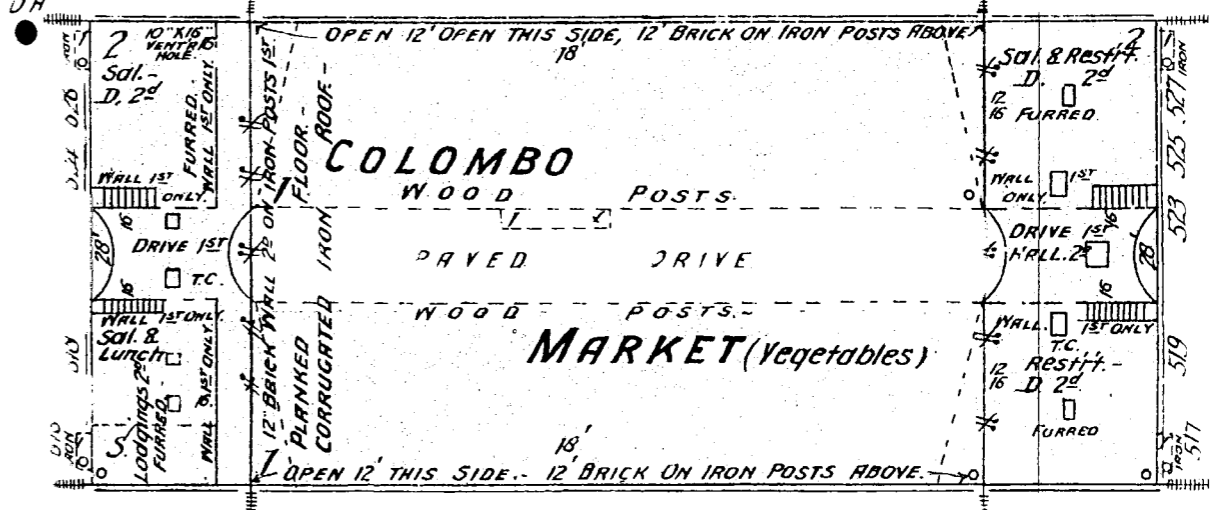


PACIFIC

19 feet wide

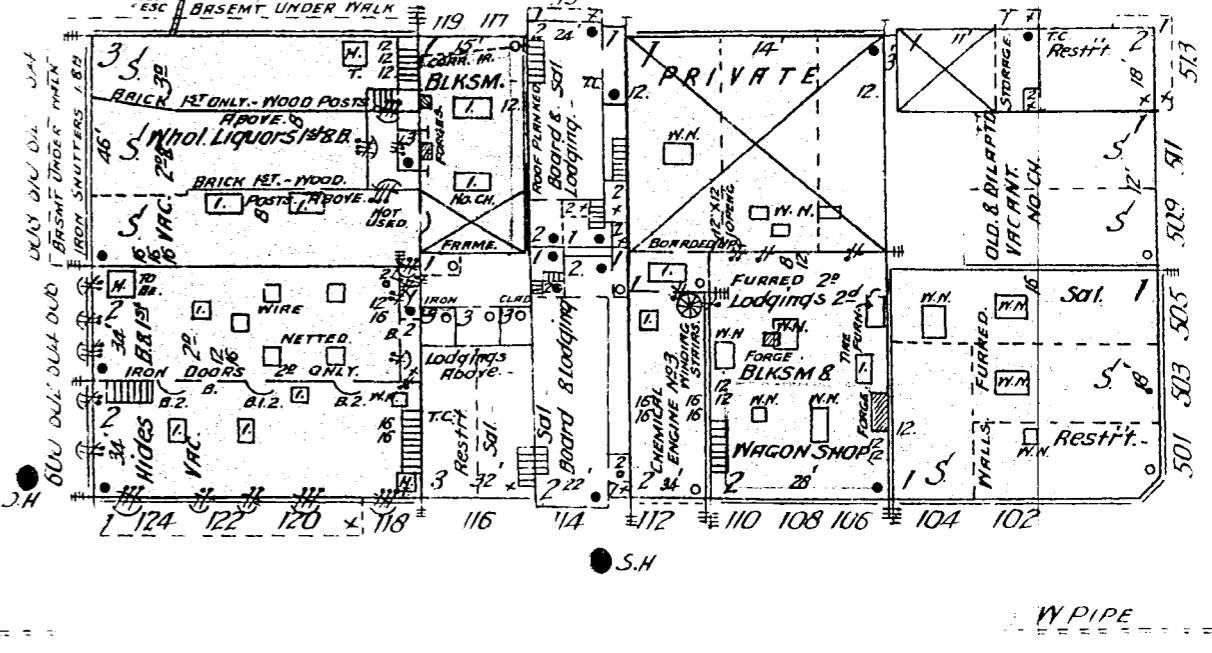
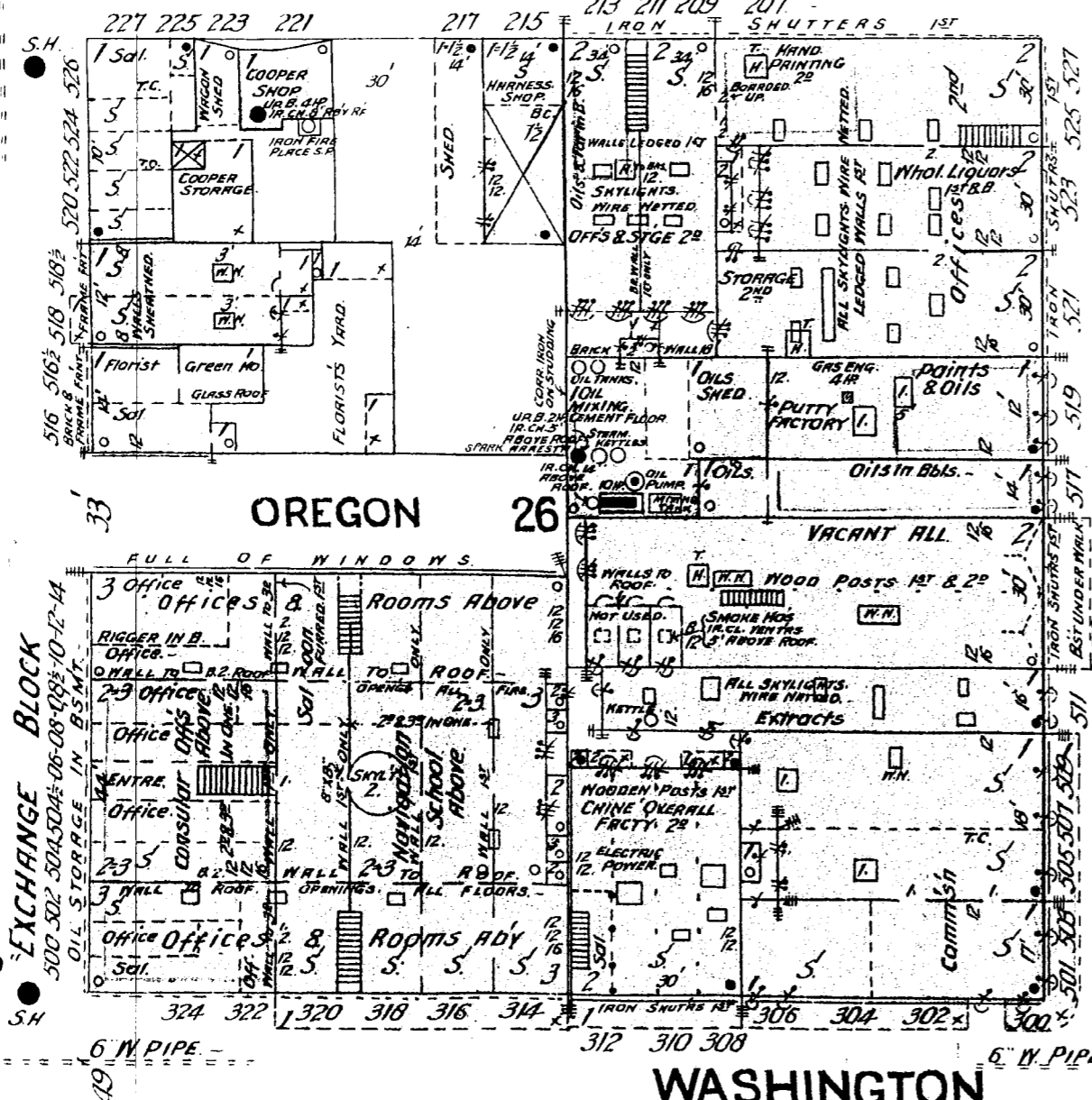


FRONT 68'9" WIDE

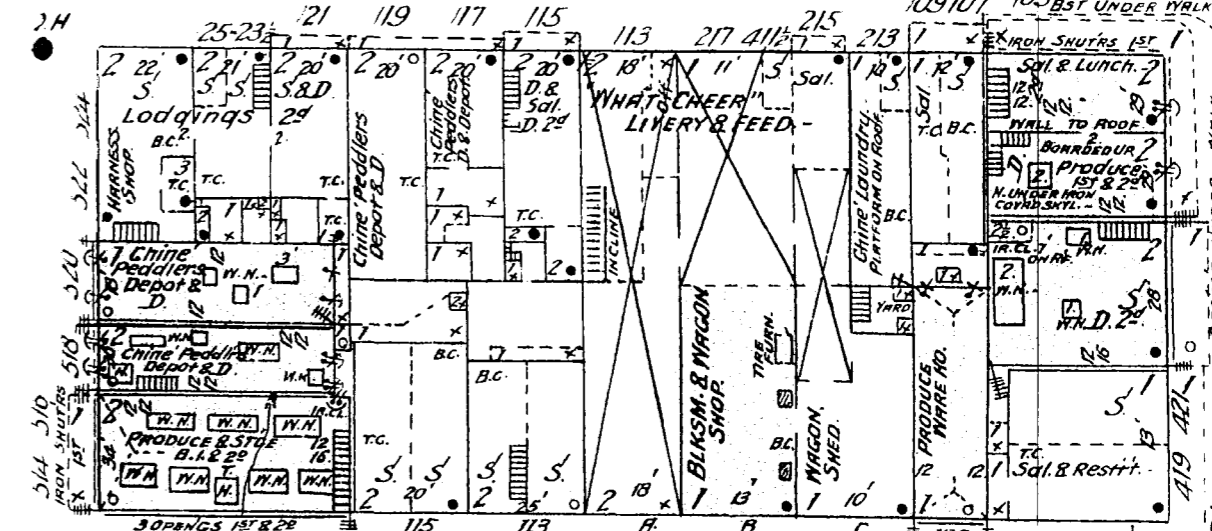


CLARK 13

19 feet wide

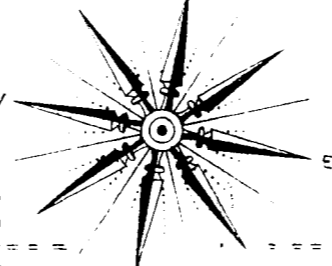
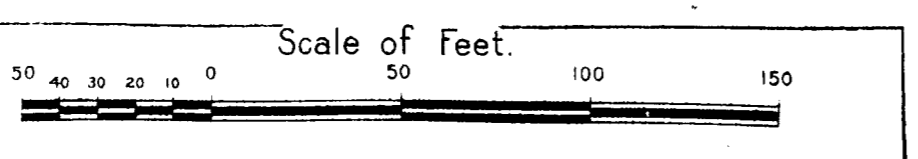


JACKSON



WASHINGTON

10



DAVIS

NOTE FOR THE BATTERY ST. SIDE OF THE BLOCK, THE IRON POSTS ARE PLACED IN LINE WITH THE IRON POSTS OF THE ADJACENT BLOCKS ON BATTERY ST. SIDE.

POWER STORM - FIRE CORP. LIGHTS ONLY - 30 VOLT - 22.5 L.E. - SAME HOSE - CEMENT FLOORS IN BASEMENT

NOTE FOR THE BATTERY ST. SIDE OF THE BLOCK, THE IRON POSTS ARE PLACED IN LINE WITH THE IRON POSTS OF THE ADJACENT BLOCKS ON BATTERY ST. SIDE.

POWER STORM - FIRE CORP. LIGHTS ONLY - 30 VOLT - 22.5 L.E. - SAME HOSE - CEMENT FLOORS IN BASEMENT

19

6" W. PIPE

6" W. PIPE