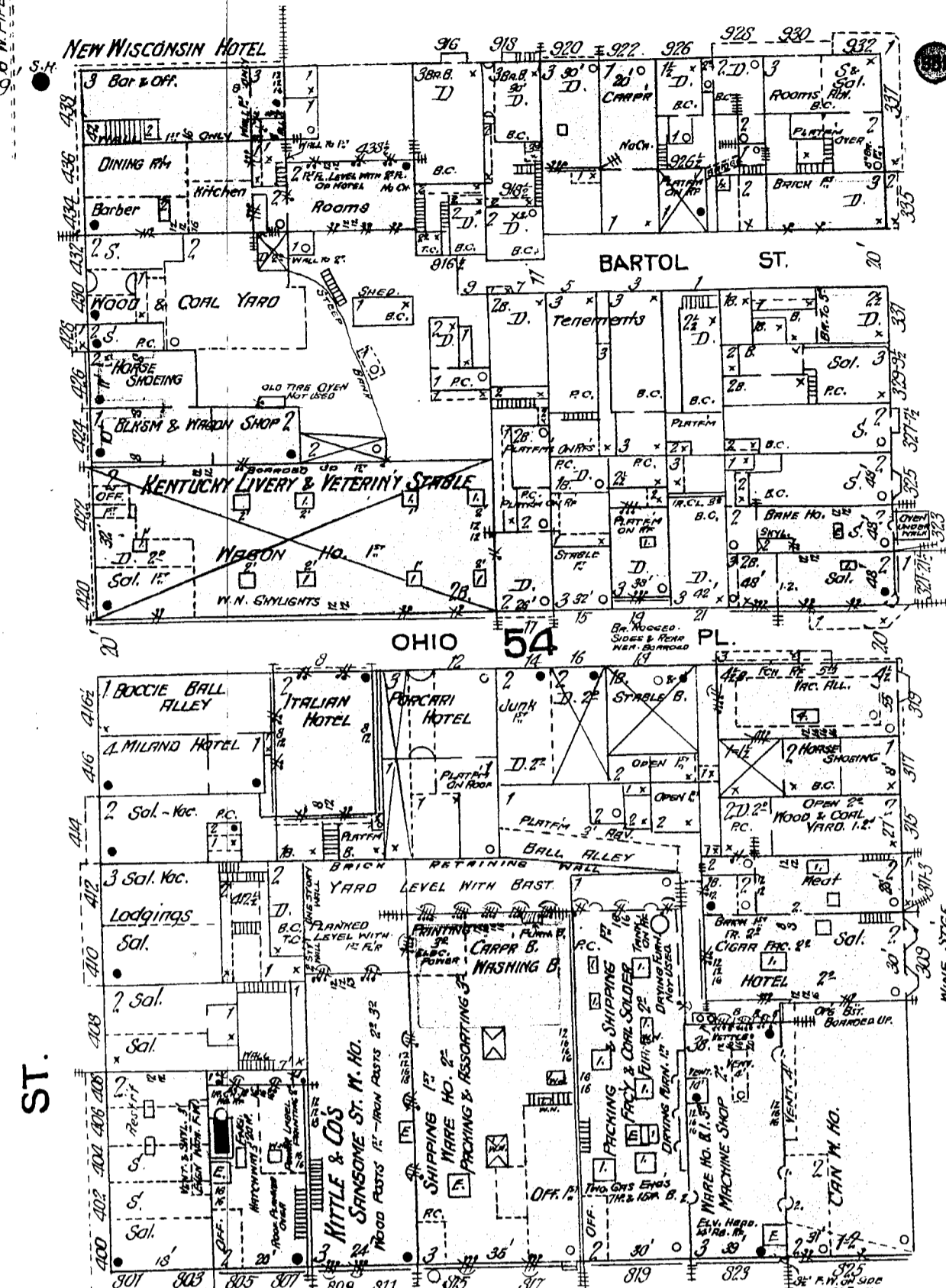


30

MONTGOMERY ST.



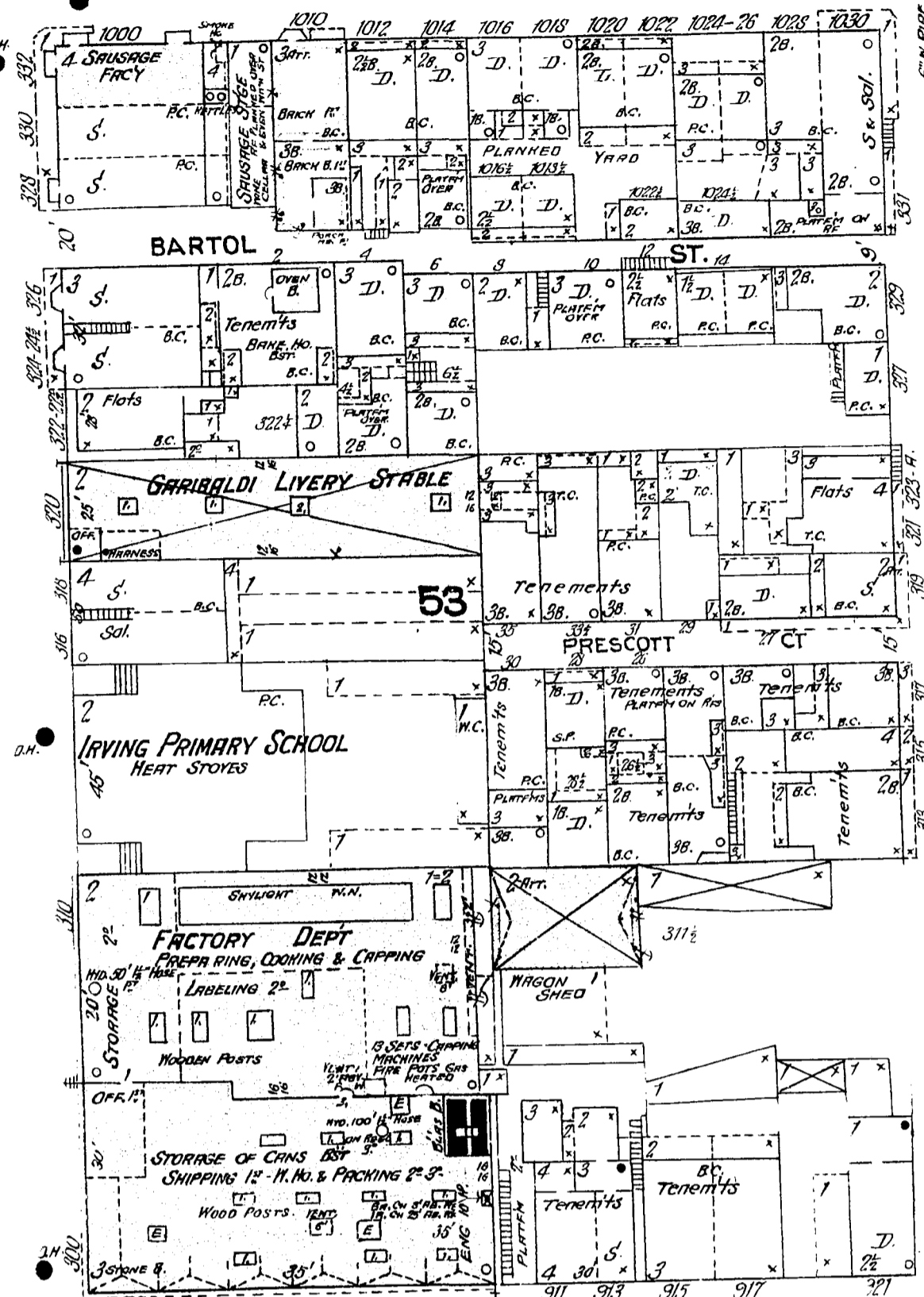
ORIENTAL CIGAR BOX CO. (CHINESE) NO. 805-807 - CHIMNEY & TOP OF BOILER USED TO DRY CEDAR - SLEEPING PAS. ST. NUMEROUS FRAME PARTITIONS

UNION CAN CO. ONE NIGHT WATCHMAN - ELECTRIC LIGHTS SIX FIRE PAILS - WOOD SUPPORTS

E. J. BOWEN - SEEDS NO. 815 & 817 ELECTRIC LIGHTS - 12 HAND GREENHOUSES TWO FIRE PAILS - WOOD SUPPORTS ROW. B. BRICK SUPPORTS & CEMENT FLOOR BSI

82 1/2 feet wide

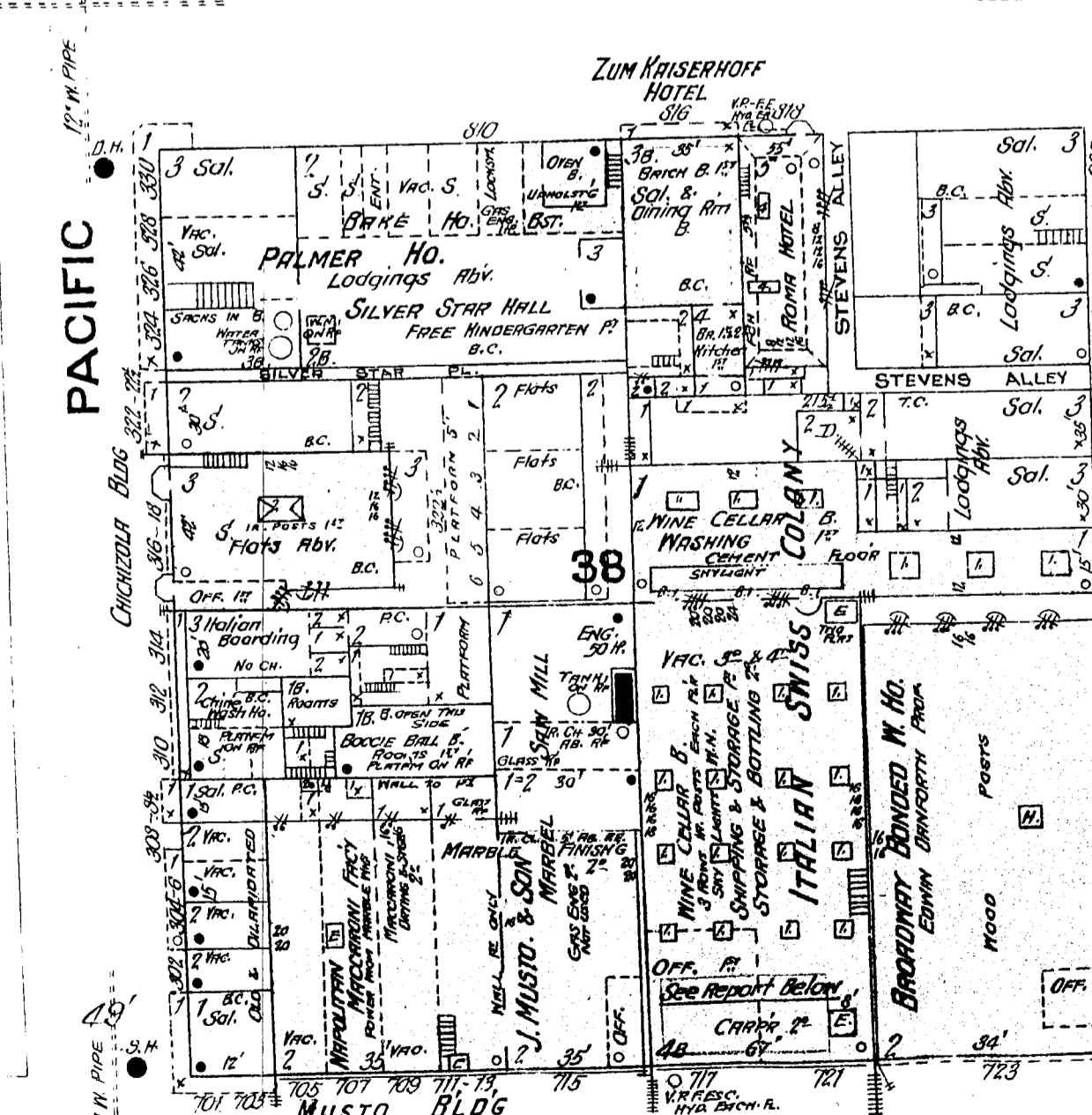
BARTOL ST.



KING MORSE CANNING CO. ONE NIGHT WATCHMAN - LIGHTS GAS & ELECTRIC HYDRANTS & HOSE AS SHOWN - TWO RUL. F.P. BOXES SKYLIGHTS W. N.

58' 9" wide

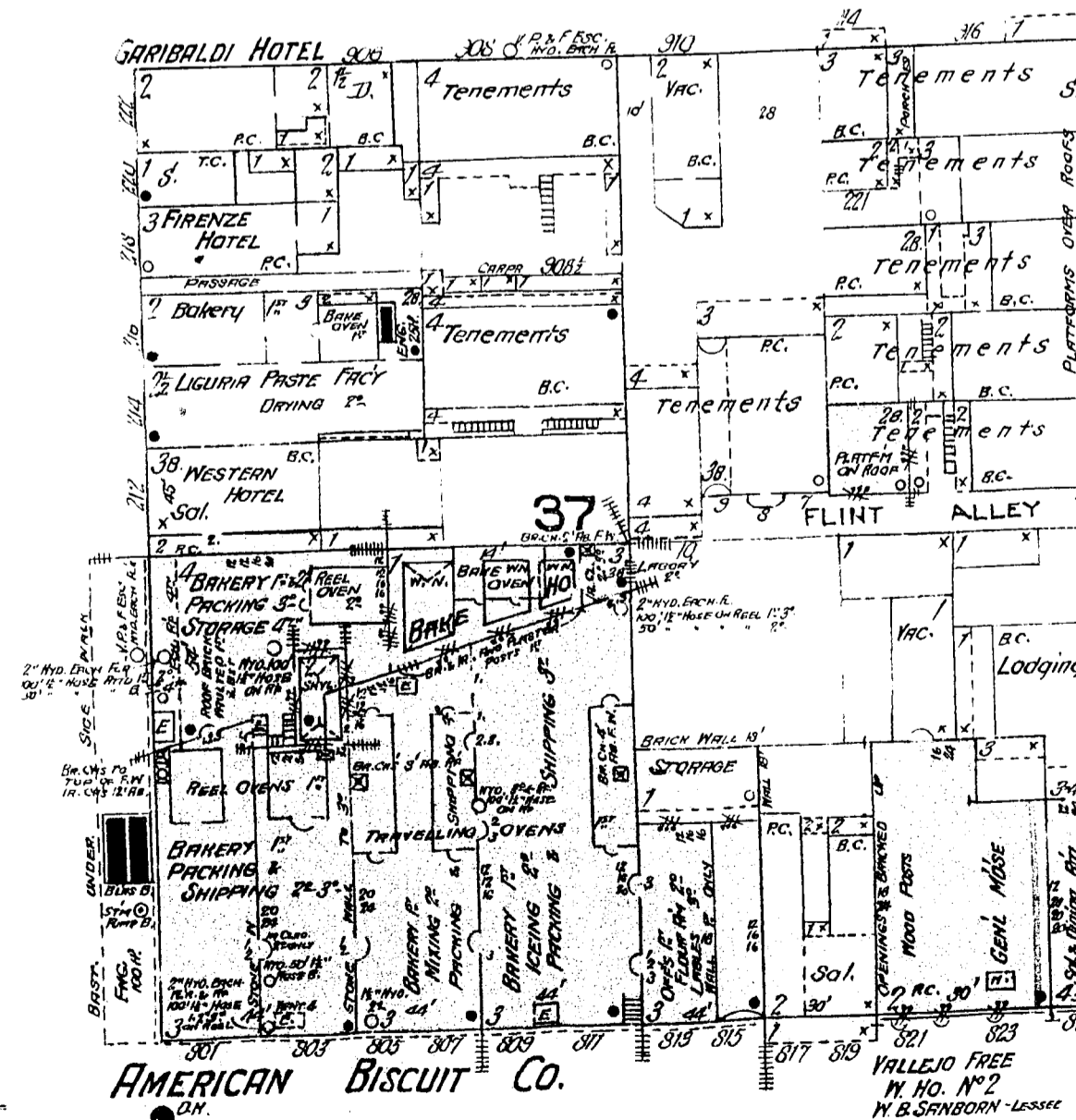
SANSOME



MUSTO BLDG. NO. 717-721 ELEV. IRON LATH & PLASTER IRON LINED DOORS REAR ELEV. PROTECTED FROM FLOORS BY SHEET IRON 500 HOLES AVAILABLE FOR FIRE PURPOSES

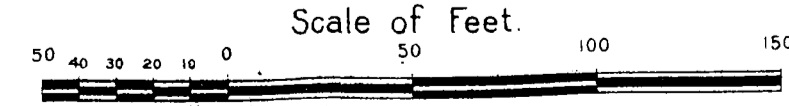
82 1/2 feet wide

BROADWAY



AMERICAN BISCUIT CO. - ONE NIGHT WATCHMAN & ABOUT 200 EMPLOYEES 60 WORKING AFTER 12 O'CLOCK MIDNIGHT POWER STARTS - LIGHTS ELECTRIC & GAS STEAM STARTS - LIGHTS EITHER WELL STEAM PUMP CAN CONNECT WITH EITHER WELL OR CITY MAIN - HYDRANTS & HOSE AS SHOWN FURNITURE OF REEL Ovens EXTEND TO FLOOR BELOW CONCRETE FLOOR IN BAKERY - SIX RUL. F.P. BOXES ONE BRASS FIRE EXTER. 1" - TWO ON 2" & FOUR ON 3" FLOOR

Scale of Feet.



13

VALLEJO

68' 9"

20 19

21