

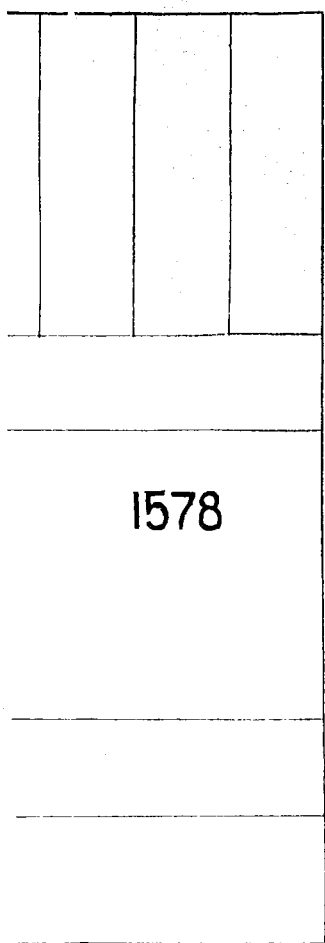
132

70'

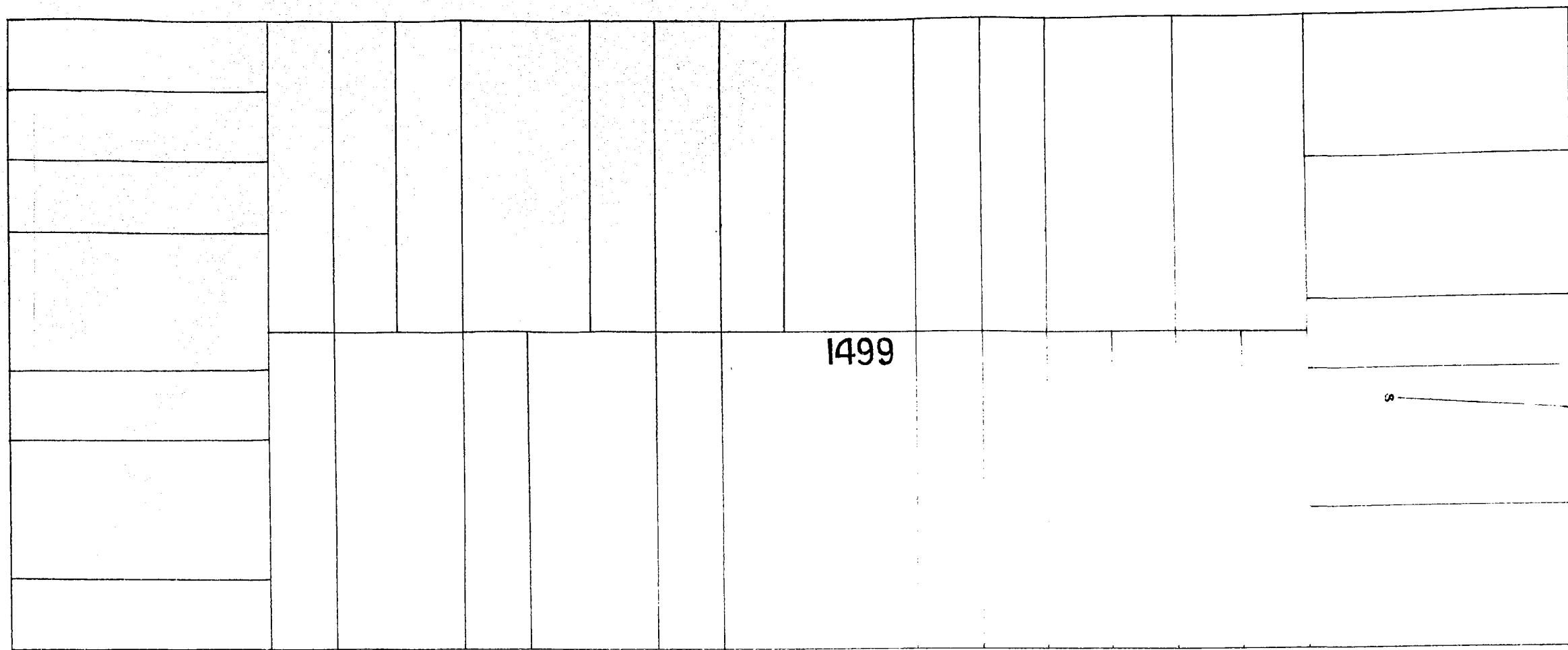
70'

130

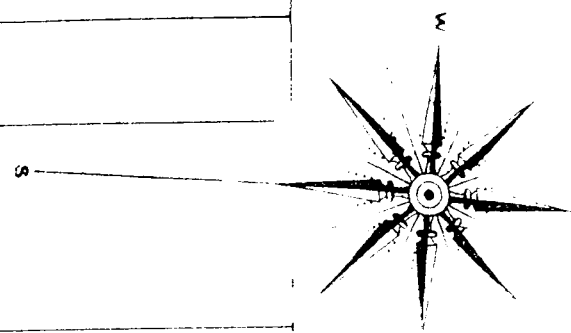
C. M. PIPE
B. M. PIPE



1578



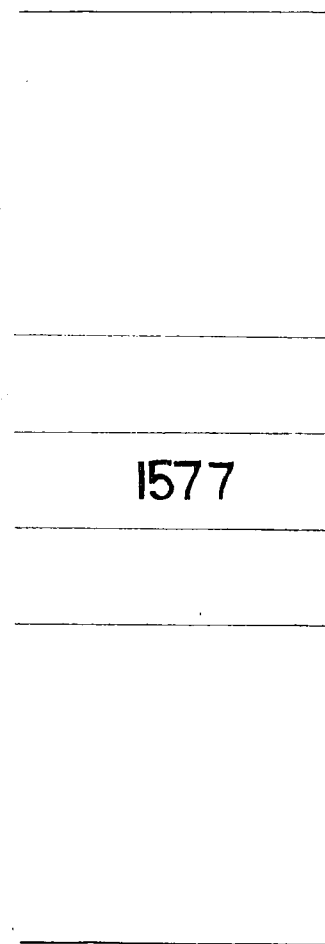
1499



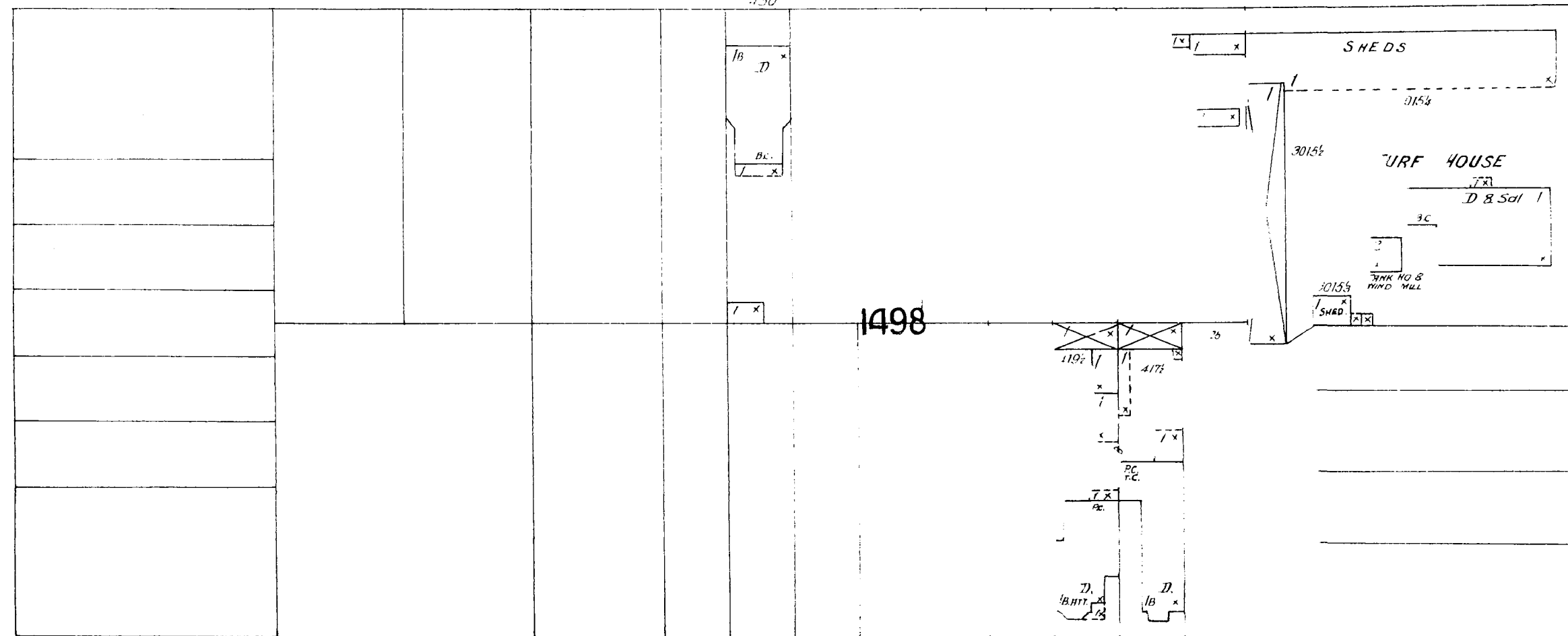
137

70'

70'



1577



1498

ST.

AV

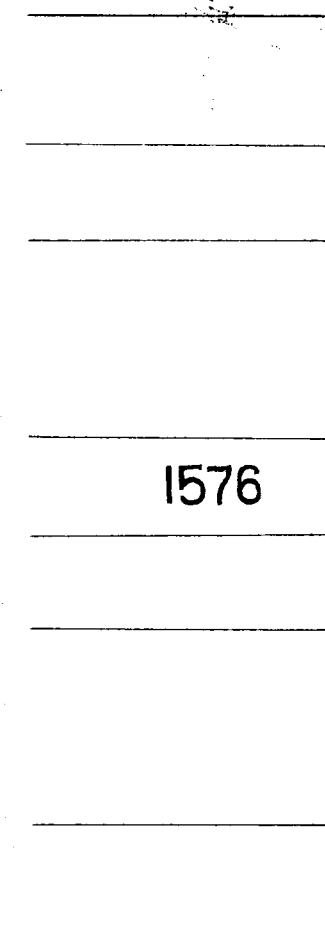
463

0

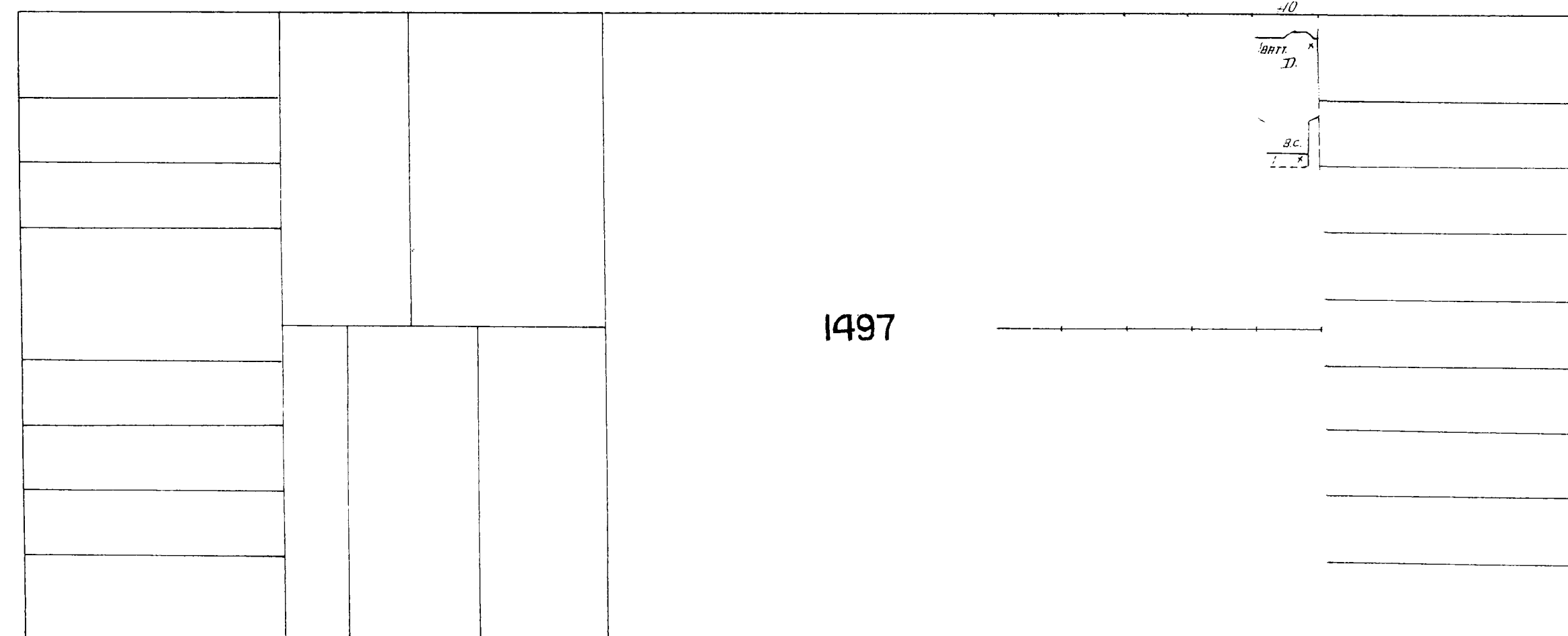
136

70'

70'



1576



1497

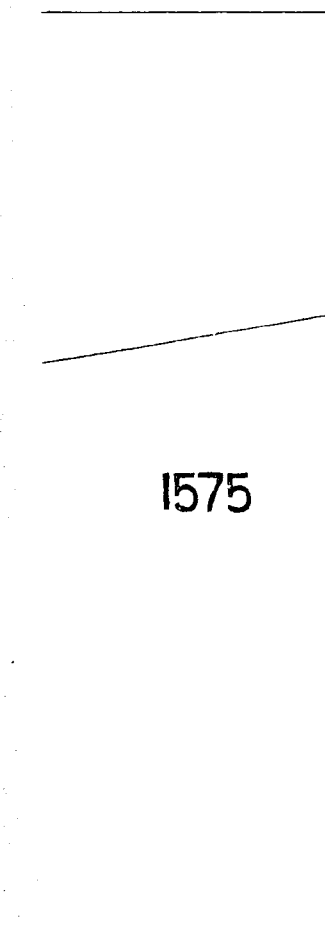
A

FOUR TUBES

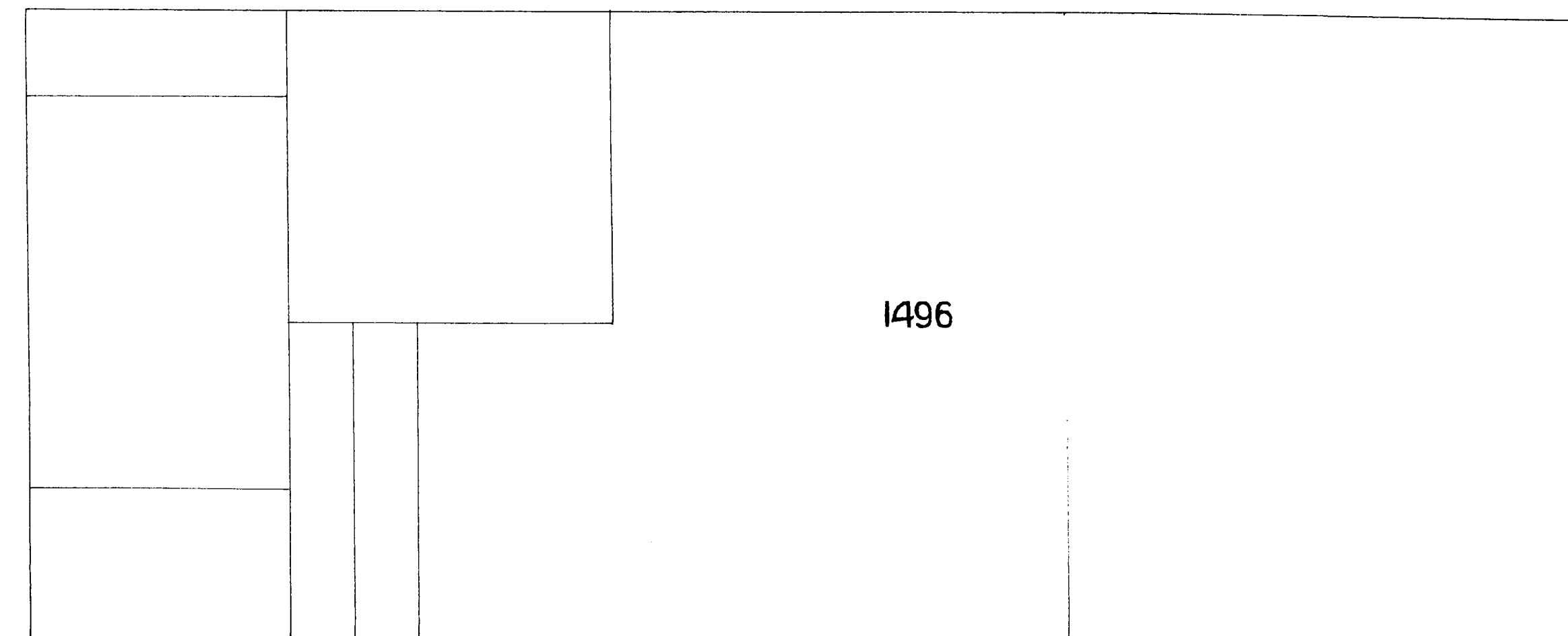
140

70'

70'



1575



1496

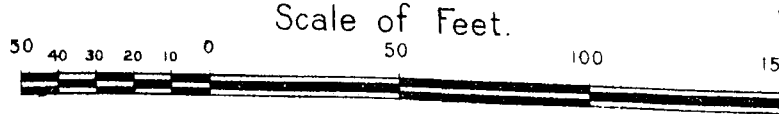
80'

125

130

70'

70'



125

C. M. PIPE
B. M. PIPE
16. M. PIPE