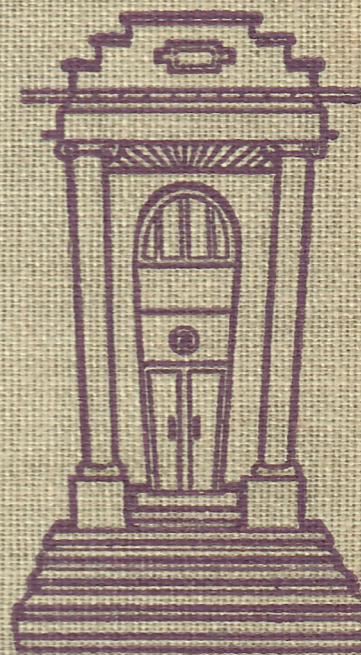


FUS-RUF-TZ-F

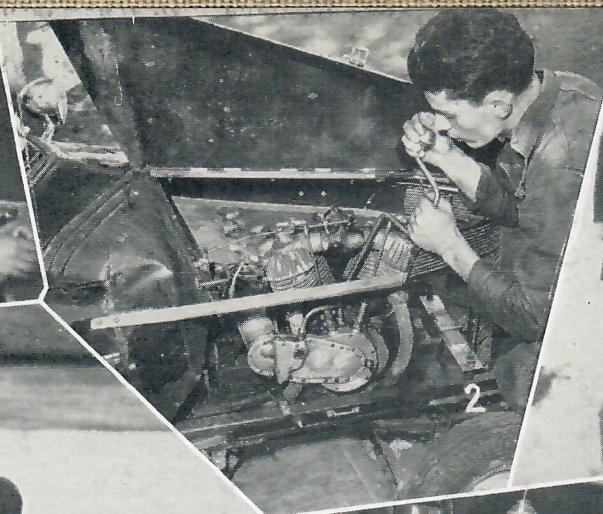
-49-

*"Hello Soph"*



JUNE PATOCCHI











# THE ENTERPRISE

FOR

JUNE, 1941

PETALUMA HIGH SCHOOL  
PETALUMA, CALIFORNIA

*James Ricci*

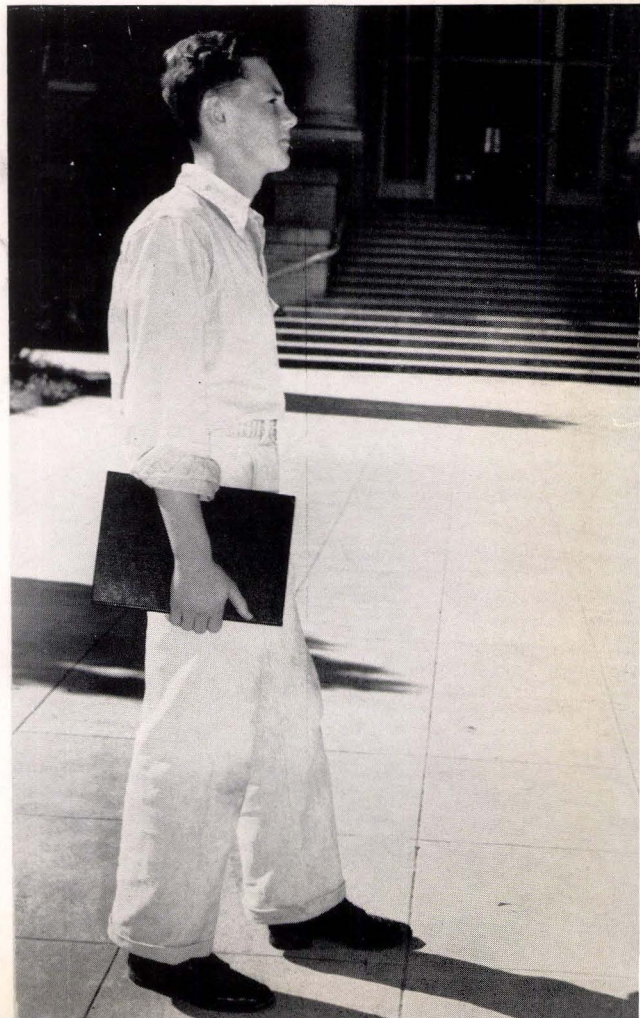
*May you have a large  
and prosperous  
family*

*Stan Jensen*

*Ralph  
Stewart*

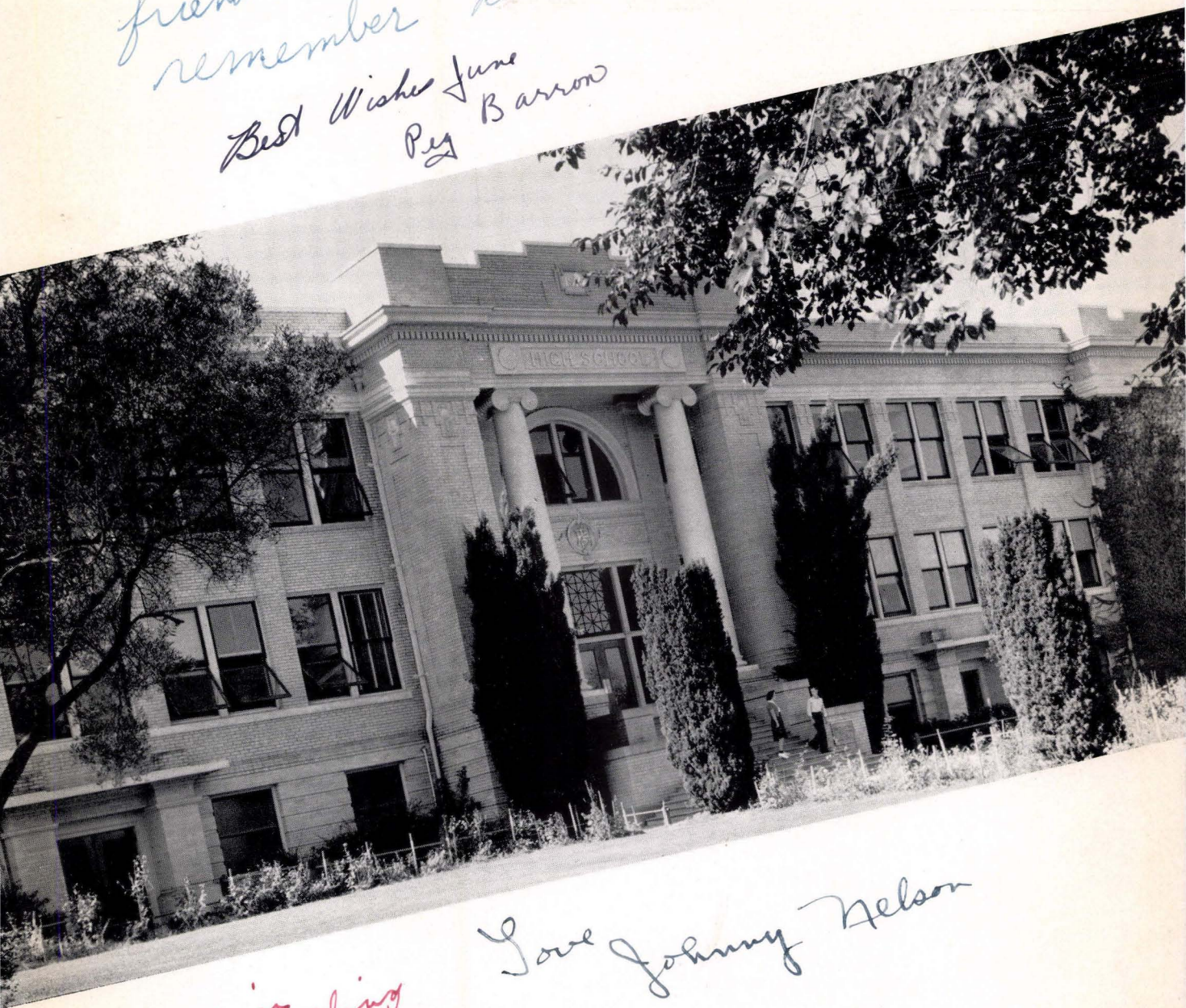
*Hello, Soph!*

*Edgeman*





To one of my best  
friend whom I'll always  
remember as ever - Beverly Carter  
Best Wishes June  
Peg Barron



Melvin  
Doelling

Love Johnny Nelson

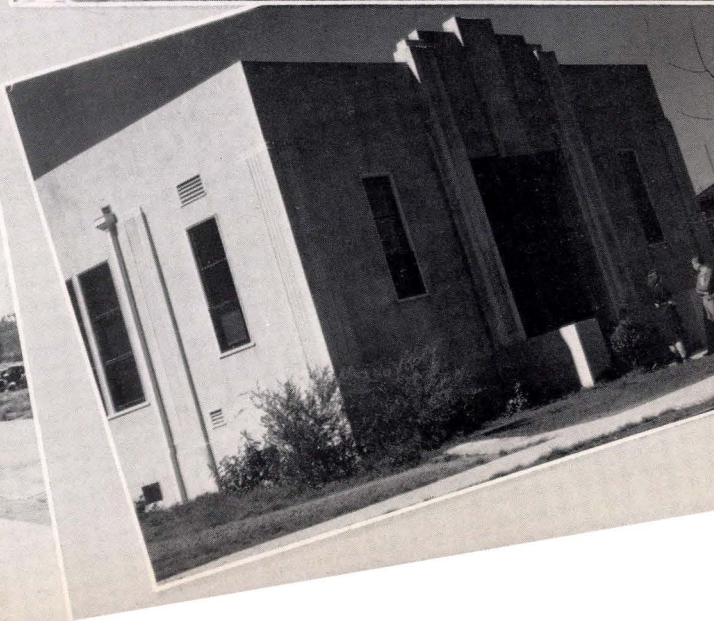
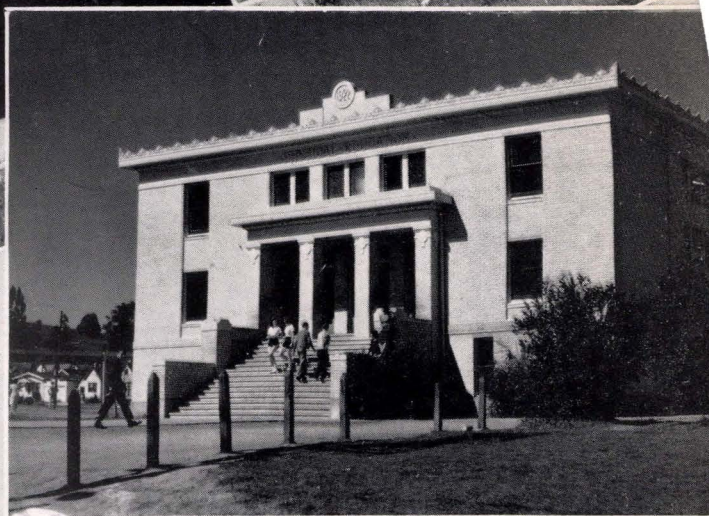
*This is our main building and . . . .*



*here are our music hall and other units...*











WELL, HELLO, SOPH! So you want to get acquainted! Don't look so scared! You've looked forward to this day—your first day at high school—with fear, impatience, excitement, wonder—we know because we were all Sophs once—yes!—we're really human. We want you to feel at home here at P. H. S.; we want you to enjoy yourself every minute you are with us and we know you're going to like P. H. S. a lot. If you ever should lose anything, or find something, or get lost yourself, or want any kind of information, just go to Mrs. Bryce (the lady with a smile). You'll always find her at her desk in the office. She's always ready to help anyone who wants her help. You've probably met her already without realizing.

Of course, you'd like to know "what makes us go," so how would you like to get acquainted? First, we'll go meet the bosses. C'mon, Soph!



ALL YOUNG PEOPLE entering high school possess a certain amount of talent, some more and some less. A portion of this talent has been developed, to a certain extent, in the lower grades. A large amount is still latent. It is your task to discover the talent you have and, by the aid of the schools, to cultivate it.

In order to develop your possibilities, certain attitudes are necessary. You must first believe in yourself, for this will give you the drive and the determination to accomplish something. Then you must perform your work conscientiously. By striving merely to "get by" you are only cheating yourself and missing an opportunity. And lastly, when you have found your particular talents, grasp every opportunity to develop them and make them mean something in your life. Have patience, and do not expect to get results in a few weeks or months. It is like producing a fine football team; it takes time.

If you follow these principles in high school and higher institutions of learning and let the faculty help you to help yourself, you will be gratified with the results. These talents, developed into skills by the time you graduate, are your contributions to society and to the nation.

—D. M. DURST.



HELLO SOPH! We gladly welcome you to senior high school—you with your wide-eyed youthful curiosity, enthusiasm and eager expectancy for something new under the sun. May all your questions be answered and all your hopes be realized in the finest way possible. You will find that we shall expect of you a fairly large capacity for work coupled with the necessary energy to do well whatever task may be given you. You will be offered many opportunities for service to your fellow students and there will be many happy hours just for play. We shall try hard not to fail you and in the brief years that you are with us, may you realize a full measure of worth while and honest accomplishment.

—ELLIN TRUEBLOOD.





WE WONDER if you feel as we did when we first came to P. H. S. We were scared stiff of the school, the kids, and the teachers. Of course, we learned before long that our fear was foolish because there is nothing to fear—least of all, the faculty. They're a bunch of the swellest people you could know. There are two deans to whom you can turn when you are stuck, and there is a staff of counselors who help students arrange their programs, while other teachers sponsor our clubs and publications. All in all, they're really grand. We just know you'll like them. So, c'mon, Soph, let's go meet 'em. What d'you say?





Left to right:  
 ALICE FACER—Household Art, Management, and Science.  
 ALETHA OLMSTED, A. B.—Girls' Physical Education.  
 AGNES BRAVO, A. B.—Harmony, Choral, Music Appreciation, A Cappella Choir.  
 GERTRUDE GOODRICH—Art, Art Supervision.



WALTER B. HAWTHORNE—Auto Mechanics.  
 NORENE CAMPBELL, A. B.—Biology, Honor Society.  
 PERCY DAY, A. B.—Mechanical Drawing, Physics, Applied Science, Traffic.  
 ENID OLIVI, M. A.—English, French, Dramatics.



MARTHA ALLEN, M. A.—Spanish, Enterprise, Trojan.  
 HAZEL ALLEN, A. B.—Typing, Counselor, Junior Adviser.  
 EDITH HOAG, B. L.—Stenography, Typing, Office Practice.  
 GEORGE INGELOW, M. A.—English, History, Counselor.



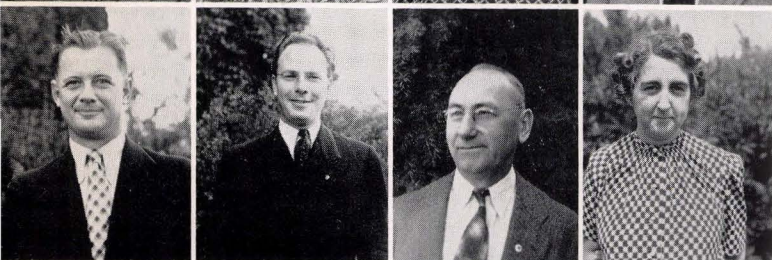
BERT HEWITT—Woodshop.  
 FLORENCE JENSEN, M. A.—English, Counselor.  
 JOHN SCHUSTER—Boys' Physical Education, Basketball.  
 BARTON REARDEN, B. S.—Agriculture, Counselor.



MILTON C. AXT, A. B., B. S.—English, Sports, Counselor, Dean of Boys.  
 MILDRED HERRICK, M. A.—English, Librarian, Counselor.  
 ANITA KORTS, A. B.—History, Economics, Trojan, Counselor, Senior Adviser.  
 DOROTHEA SWANSON, M. A.—History, German, Head Counselor.



A. B. WAY, A. B., M. A.—Penmanship, Spelling, Commercial Subjects, School Treasurer.  
 ELIZABETH DADISMAN, A. B., M. A.—Biology.  
 MYRTLE BROWN, A. B.—English, Dean of Girls, Counselor.  
 WILLIAM BLALOCK, A. B.—Chemistry, Track.



HARLAN REYBURN, A. B.—Geometry, Trigonometry, Tennis, Counselor.  
 GEORGE HATFIELD, A. B.—Orchestra, Band.  
 W. L. NORTON, B. S.—Agriculture.  
 CATHARINE DUGGAN, A. B.—Civics, History, Counselor, Sophomore Adviser.



FRED JAEHNIG, A. B.—Business Arithmetic, Coordinator and Attendance Officer, Counselor.  
 ESTELLA SMITH—Household Science, Continuation.



# Student Body

FALL CABINET—Naye, Carothers, Koch, Veronda, Noriel, Hughes, Swanberg, Maddalena, Heney, Peck.  
 SPRING CABINET—Klemenok, Peoples, Heney, Keegan, Corliss, Koch, Byce, Swanberg, Maddalena, Naye, Zimmerman.



## FALL

## STUDENT BODY CABINET

## SPRING

Eddie Noriel.....	President.....	Richard Koch
Bill Naye.....	Boys' League.....	Fred Klemenok
Francis Heney.....	Girls' Club.....	Francis Heney
Richard Koch.....	Secretary Finance.....	Bill Naye
James Carothers.....	Secretary Citizenship.....	Arthur Peoples
Bill Peck.....	Secretary Boys' Athletics.....	Evan Zimmerman
Charlotte Maddalena.....	Secretary Girls' Athletics.....	Charlotte Maddalena
Jennie Veronda.....	Social Secretary.....	Harriette Keegan
Dorothy Branson.....	Recording Secretary.....	Jean Corliss
Doris Swanberg.....	Enterprise Editor.....	Doris Swanberg
Margaret Hughes.....	Trojan Editor.....	Lorraine Byce

STUDENT GOVERNMENT, here at P. H. S., has two main divisions—the Student Body Cabinet and Committees.

It's lots of fun being on the cabinet—from the hilarious initiation and dignified installation, when incoming students are in the limelight, until the traditional progressive dinner, enjoyed by outgoing members.

Between these two events, the students on the cabinet hold weekly cabinet meetings and present regular Student Body business meetings. In addition to this, the president and one other member attend monthly meetings of the North Bay League presidents and officers, visiting different schools and learning how other schools are governed.

Of course, the individual cabinet members have their own jobs and responsibilities; as a result, we have a school of which to be proud. Don't you think so?



MERIT COMMITTEE—(back row) Carothers, Lyle, Jacobsen, Dunaway, Peoples; (middle row) Miss Hoag, Mr. Jaehnig; (front row) Tunzi, Miyano, Keegan, York.



AWARDS COMMITTEE—(back row) Maddalena, Mr. Schuster, Peck; (front row) Zimmerman, Rasmussen, Christiansen, Miss Olmsted.



FINANCE COMMITTEE—(back row) Mr. Reyburn, Miyano, Byce, Mr. Way; (front row) Naye, Nelson, Koch.

## FINANCE COMMITTEE

Do you like to write checks and balance budgets? If you do, you should be on the finance committee. They plan and balance our high school budget and direct the sale of student body cards. In planning the budget, they must decide how much money each society, club, publication, or activity should get for the year and see that their receipts and expenditures balance at the end of the school year.

## AWARDS COMMITTEE

Before your life at P. H. S. is over, you will probably receive a block, star, or other award which the Awards Committee gives to students who participate in athletic activities and agricultural projects. This committee also gives letters, pennants, ribbons, and plaques. The boys who direct traffic also receive recognition. Anyone who is interested in activities may earn an activity block.

## MERIT COMMITTEE

You probably don't need an introduction to the merit committee. But did you know that this committee sends out approximately 85 demerits each week? This is at the rate of eighteen a day, or three during a period, or one for every  $22\frac{1}{2}$  minutes of the school day. Quite a busy committee.





SENIOR! Does it seem like a magic word or an unattainable goal or a very lucky person to you, Soph? Well, I wouldn't be too discouraged about it if I were you, because you'll be a Senior before you know it, and between now and then you'll have loads of fun at school dances, working on committees, enjoying Student Body programs, attending games, and all the while you will also be working for that so-called unattainable goal, the State-of-being-a-Senior, and then when you look back upon your years at P. H. S., I think you'll kind of hate to leave us. Would you like to meet some of these Seniors? Here are some . . . . .

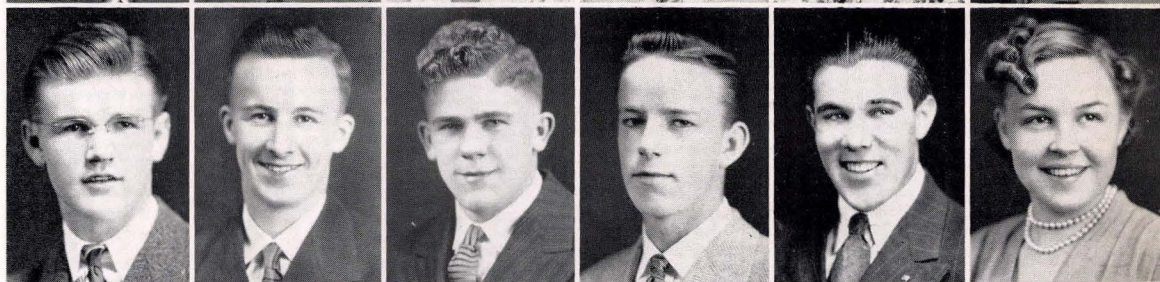


# January Seniors

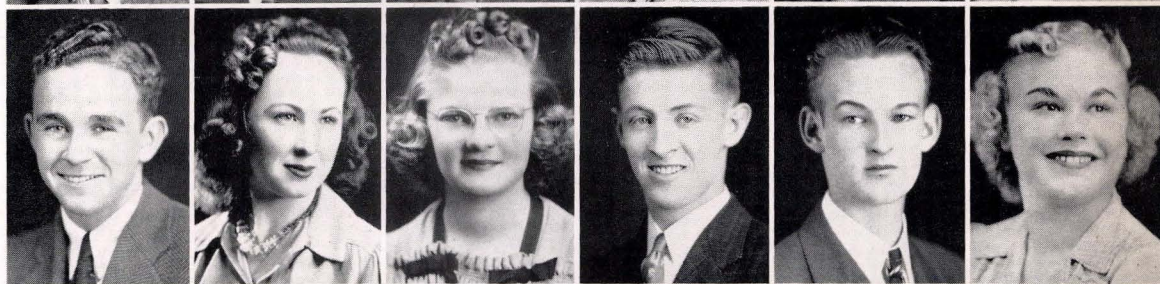
Jim Anderson  
Leon Anderson  
Mildred Arfsten  
Ed Avilla  
Jessie Berger  
Dorothy Bransen



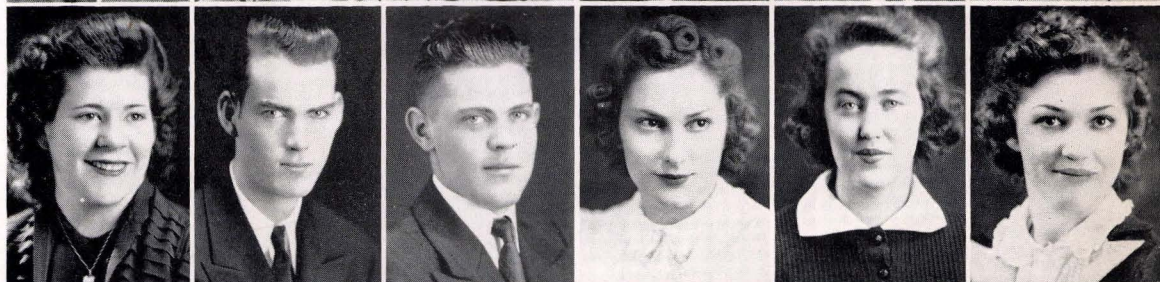
Lawrence Cardwell  
Alvin Church  
Robert Crozier  
William Dye  
Raymond Fields  
Valerie Everett



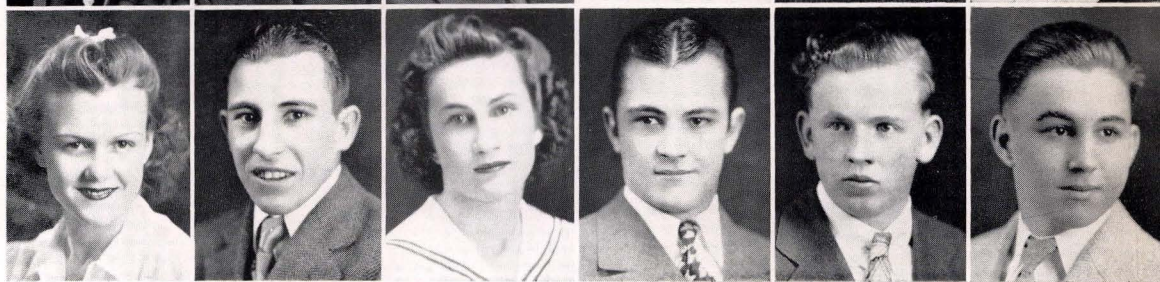
Lorin Goree  
Norma Gossage  
Helen Guthrie  
Harold Johnstone  
Donald Kresky  
Elma Mattson



Jean Munro  
Clifford Murphy  
George Myles  
Alice Nella  
Virginia Periera  
Lucille Petersen



Maxine Plank  
Henry Ramacciotti  
Mary Ramacciotti  
Arthur Ramatici  
Frank Raney  
Edward Rosseton





## January Seniors



Norma Rosseton  
Joe Sabaca  
Carl Schlener  
Jack Schwartz  
Pauline Silveira

Eugene Simons  
Jennie Veronda  
Marjorie Wade  
Ethel Zagerman  
Eddie Kawaoka



Peter Allena  
Marie Anderson  
Warren Anderson  
Lydia Antognini  
Harold Ascherman

Alvin Badenhop  
Rosie Bahm  
Barbara Bakar  
Evelyn Baker  
June Barber

## June Seniors



# June Seniors

Kathleen Barboni  
Ella Barnes  
Barbara Baugh  
Helen Beffa  
George Berry  
Dick Bilbro



Sophie Bonos  
Pierina Bordessa  
Elsie Boysen  
Myra Bradberry  
Mildred Bradstreet  
Elaine Bravo



Leslie Briens

Leslie Briens  
Marjorie Brodersen  
Betty Dean Brugge  
Jacqueline Bucholtz  
Peggy Burnham  
Lorraine Byce



Art Cader  
Louis Canton  
Donald Carlquist  
James Carothers  
Agnete Christensen  
Annie Christiansen



Betty Christiansen  
Ruth Clark  
Barbara Cluver  
Marjorie Cochrane  
Dorothy Cunningham  
Ruth Dickie

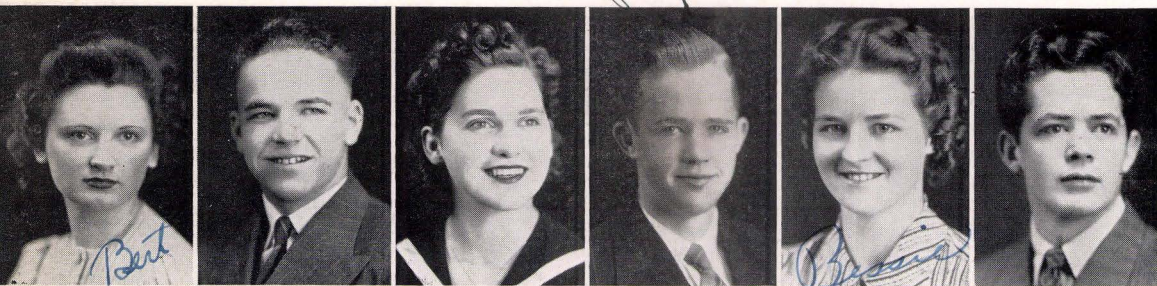




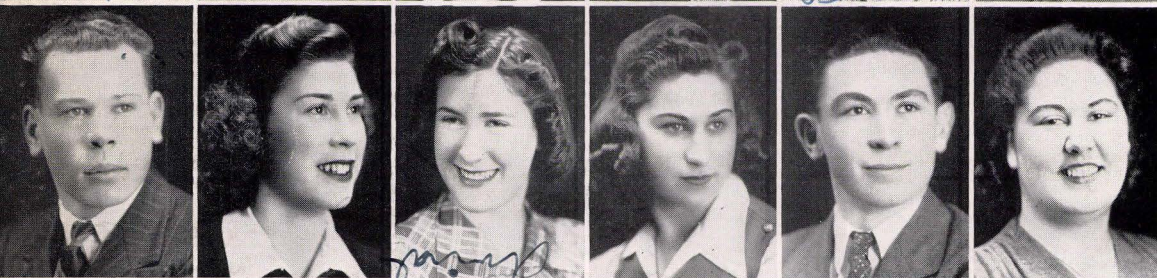
*Roy Dunaway*

## June Seniors

*Leo Evart*



Berthile Donovan  
Bill Dorsett  
Olive Douglas  
Roy Dunaway  
Bessie Evans  
Leo Evart



*Norman Fishman*

Douglas Fehler  
Louise Figone  
Avivah Finkelman  
Selma Fishman  
Norman Fishman  
Josephine Forbes



Milton Forman  
Lawrence Forno  
Florence Forster  
Laverne Fowler  
Myrtis Frati  
Lorraine Friis



Ethel Frizzi  
Leopoldo Garzelli  
Valentina Garzoli  
Stella Genazzi  
Curtis Guintoli  
Bill Goree



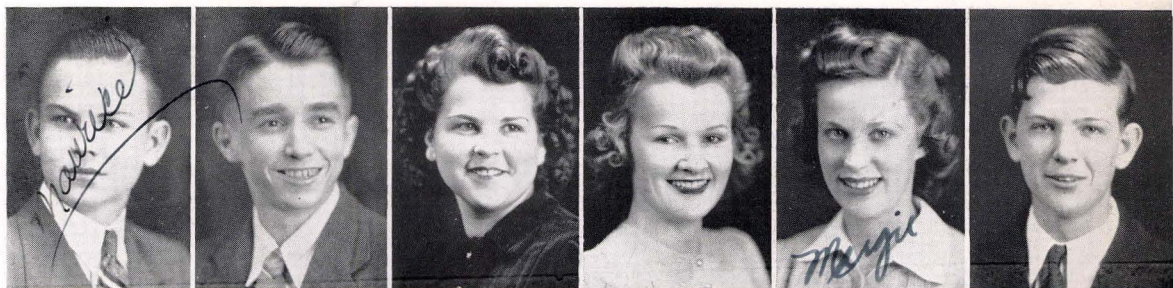
Harry Gossage  
Gustin Govaerts  
Ida Graff  
James Graham  
Shirley Gregg  
John Hackman

*Shirley Gregg*



# June Seniors

Maurice Hall  
Joe Halter  
Alice Hamilton  
Gisela Hammerman  
Marjorie Hardie  
Raymond Heil



Robert Heller  
Kenneth Henricksen  
Lewis Hughes  
Margaret Hughes  
Bernice Jacobsen  
Earl Jacobsen



Mark Jensen  
Stanley Jensen  
Agnes Johnson  
Joan Johnson  
Henry Johnstone  
Esther Jorgensen



Tamara Kaufman  
Alice Kawase  
Harriette Keegan  
Kenelm Keller  
June Kindle  
David King



Sam Klebanoff  
Gerald Knudson  
Richard Koch  
Elsa Kolstad  
Alice Koontz  
Frank Kramer



*Sam Klebanoff*

*Frank Kramer*



# June Seniors



Clara Kurtenbach  
Dorothy Lack  
Hilda LaFranchi  
Elsie Lavio  
Roger Lawson  
Alice Lichau

Inez Liddle  
Rhoda Lyle  
Bob Lyle  
Steve Mache  
Charlotte Maddalena  
Edwardine Mahoney

Sadie Maki  
Lester Mane  
Fred Martin  
Kenneth Martin  
Robert Matney  
Clarine Matsuda

Alice Matsumoto  
Richard Mattei  
Jean McDonald  
Dea Jean McEvoy  
Harry McNulty  
Verlie Merango

Jack Mero  
Ruth Mero  
Harold Metcalf  
Bill Milne  
Ray Milner  
Thomas Mitchell

*Handwritten signature: Harold Metcalf*



# June Seniors

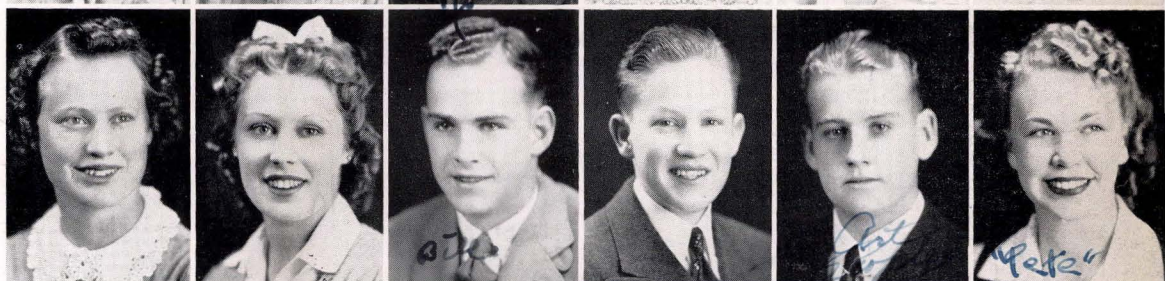
Lily Miyano  
Donald Mugglestone  
Constance Murphy  
Ruby Marie Murphy  
William Naye  
Mildred Nelson



Alice Newell  
Elsbeth Nissen  
Eddie Noriel  
Florence Nosecchi  
Elizabeth Olberg  
Emma Olsen



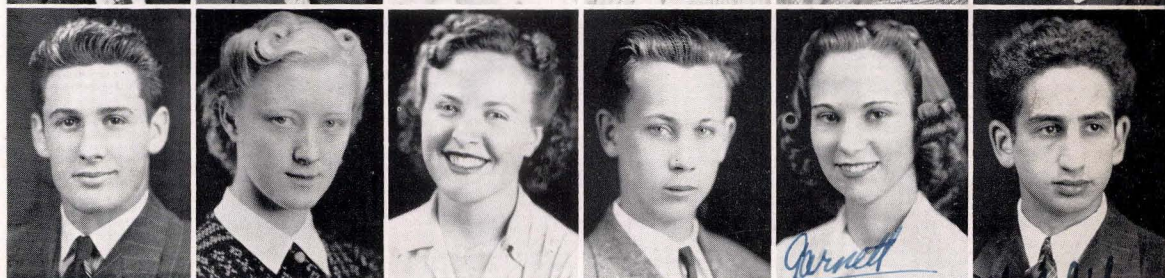
Emma Olufs  
June Patocchi  
Bill Peck  
Harvey Pieper  
Arthur Peoples  
Marie Petersen



Lloyd Pfander  
Ted Picco  
Carol Purvine  
Ellen Rasmussen  
Remo Ricci  
Rose Rodgers



Victor Rossotti  
Lillian Sather  
Gloria Scanagatta  
Willard Shell  
Garnet Silcox  
Himmy Silver



*M. Silver*



# June Seniors



*Terry Snygg*

Harry Skoog  
Albert O. Smith  
Clinton Smith  
Zollie Jean Smith  
Terry Snygg



Hazel Sorenson  
Dorothy Stornetta  
Doris Swanberg  
Laurence Sychrowsky  
Catherine Thomas



May Tillin  
Melvin Tomasetti  
Richard Trayler  
Elsie Tunzi  
Norma Vannucci



Dorothy Waite  
Paul Wedel  
Velma Westertep  
Marian Yasuda  
Marjorie Yearsley



Fred Young  
Violet Young



## *Low Seniors*

HERE ARE the Low Seniors—the future “bigwigs” of P. H. S. They can think back over many happy times here at high school and are able to anticipate even more for the remainder of their high school life. There are quite a few members of this class who have been outstanding in various activities. There’s Frances Heney, who has been a very efficient Girls’ Club president for the past year, and Fred Klemenok, who has presided over Boys’ League meetings very capably. Pat Talamantes has been an always dependable back-stage helper and errand-runner for anybody at any time. Steve Mezzera and Irv Riewerts have helped to win many football and basketball games, as have the Volkerts brothers, Fred and Wilbur. The class’s “brainstorm” is Terry Purcell, and its tennis champ is Dare Scott. Other students who have made names for themselves are Otto Thompson in band, Marie Gossage in choral, and Anita Hughes in dramatics. All told, the class has made many contributions to P. H. S.

Front row—Petersen, Cuppoletti, Stengel, Hughes, Talamantes, Jones, Stefani, Cranse, Bolla, Minolli, Fuson. Second row—Strom, Volkerts, Aretz, Corda, Barron, Webber, King, Heney, Rosen, Issel, Purcell. Third row—Joseph, Scott, Fayle, Hansen, Maddalena, Thollaug, Hollingsworth, Nitzberg, Young, Hall, Wood. Back row—Riewerts, Mezzera, Doelling, Summ, Thompson, Durando, Belio, Nella, Volkerts, Murphy, Figone.







## JUNIOR OFFICERS:

FALL — (bottom) Starck, Byce, Corliss, Rosen; (top) Sturla, Klemenok, Volkerts.

SPRING — (bottom) Bloom, Howell, Sovel, Nelson; (top) York, Tunzi, Grewe, Brown.

THE GRADUATES of 1942—labeled by their president as the best Junior class in the history of P. H. S.—are seen here. We admit the Class is outstanding, from its individual members to itself as a whole working at the unique Spring Carnival dance and Junior dance of last fall. This is the first Junior class to get the so-called “Senior” sweaters before the year of graduation. Although the class is only half way through high school, it has made contributions to sports, honor society, drama, Student Body cabinet, and general activities. Yes, it’s quite a class!



Front row: Furlong, Bailey, Boysen, Chicano, Brown, Davison, DeGroot, Evert, Donovan, K. Bell. Second row: R. Bruhn, N. Bruhn, Boncristiani, Carlsen, Guernsey, Grewe, Bahnsen, Barindelli, Bolla. Third row: Golosman, Christy, Brownstein, Bayless, Dorsett, Corliss, M. Byce, Brody, Bonos, Cochran, Billon. Back row: Dean, H. Bravo, Gilardi, Carpenter, Chaney, Burbank, Bloom, Amaral, Carroll.



Front row: M. Jones, Munro, Kennedy, Petersen, Phillips, Paula, Hendrix, Manhold, Larsen, E. Legarreta. Second row: Myers, Knudson, McNeill, L. Kruse, Maass, D. Legarreta, O'Banion, Malone, McClure, Malmgren, Palucci. Third row: G. Johnsen, Menchen, Nelson, Pfander, Maffia, D. Petersen, King, L. Nakano, Plette, M. Petersen. Back row: Jensen, H. Petersen, E. Johnsen, Pinkerton, C. Nelson, B. Martin, Is-sel, Kopp, Jensen, Maddalena.



Front row: Bertolone, Shimizu, Uyeda, Silva, Tunzi, Rodgers, Bauer, Thomas, B. Anderson, Berri. Second row: Soldate, Turner, Vartnaw, Rowan, Tobin, Senn, F. Smith, Z. Smith, Schultz, Spaletta. Third row: Tunzi, Sullivan, F. Stommel, Rose, Bundesen, Tuck, Thomas, Battaglia, Sturla. Back row: R. Stommel, Billing, Vyenielo, Allen, F. Zimmerman, Jacobson, Sovel, E. Zimmerman, Bionda.



Front row: Crawford, Juber, Schramm, Hardin, J. Fuson, Casarotti, Harris, V. Patocchi, Hunt, Fadelli, Fehler, Miller. Second row: C. Petersen, Tresch, Mannwieler, Murphy, Elu, F. Golosman, Carmody, Keller, York, Potter, Frese. Third row: Pelton, Henricksen, Nunes, Suttie, Moller, Gunheim, McCapes, Michael, Carlson, Christensen, Peck, R. Bouckhout. Back row: Groves, Foster, DeGregory, Garloff, L. Echman, Rearden, Larsen, Howell, Schuster, Carr, Winn, Battaglia, Allen.







SOPHOMORE OFFICERS:

FALL—(bottom) York, Harris, Carmody, Lundberg; (top) Rudolph, Howell, Moller.

SPRING — (bottom) Raney, Andresen, Palmer, Gard; (top) Christensen, Lundberg, Mortensen, Carter.

YOU SOPHS have only recently become acquainted with P. H. S. By now, however, your bewildered and frightened looks have disappeared, and you have settled down to your new school life. Ahead, there is a lot of work and an equal amount of fun in store for you. Already, members of this class have made starts in various activities—clubs, publications, Honor Society, committees, sports, and dances. We hope that in the future your class will make many more contributions to the scholastic, athletic, and social life of P. H. S.



Front row: N. Caulfield, M. Campbell, Bailey, Gaither, B. Carter, Figueira, N. Campbell, Edwards, Giorgi, Dettling, E. Corda, J. Corda. Second row: Beers, Clarke, Butin, Bogardus, Dandliker, Calvert, Berggreen, Billman, Evans, Cuppoletti, Ferrara, Garzelli, Donovan. Third row: Bock, Andresen, Grant, Carlson, Castelli, Azevedo, Gale, Gerhardt, L. Christensen, Feil, Fujita, Gard. Back row: Conger, Fearn, Guidotti, Davis, Andresen, Bundesen, Burbank, Garzoli, Bruce, Bostrom, Daniels, Church, DeNeuf.



Front row: Lanzí, I. Larsen, Moore, Matthias, Hunt, Kegan, Jephson, Kimber, Joseph, Hansen, Maffia, Neunfeldt, Nella. Second row: Oliveira, Johnston, A. Murphy, A. Jensen, Mudget, A. Larsen, A. Nielsen, Maestretti, Mortensen, Lundberg, Marty, Lichau, J. Jones. Third row: Ohufs, Helbig, Kilpatrick, B. Johnson, Metzger, Koch, Nakamura, Laney, Martin, Laken, Maass, Nadale, McCord. Back row: Jaso, Hamilton, Nelson, Davis, Luiz, E. Lichau, Lorenzen, Hazard, McKay, Costa, Nissen, Huntley, G. Johnson, Ellwood.



Front row: Tunzi, Pinkerton, Rivers, Rasmussen, R. Halter, Rogers, B. Stommel, Nahmens, Rosenbloom, Barron, Rossotti, J. Petersen. Second row: Boredessa, T. Stanford, Rubendall, Sugioka, Spalletta, Price, D. Thomas, Broderson, C. Anderson, Bondietti, Reid, M. Wolfe. Third row: Stewart, H. Uyeda, Adams, Thompson, Rudolph, Wineland, V. Tompkins, Yasuda, Aguiar, Spear, R. Thomas. Back row: Rodland, K. Skoog, B. Vyciolo, Alicetti, C. Sturm, Poehlmann, Stone, Suez, Palmer, Ricci, Sartori, D. Zimmerman.



Front row: Seaburn, Pellonari, Cornilsen, Hein, Christiansen, D. Petersen, Cristani, Malmgren, Lassen, Costa, Hooper, Rippin. Second row: Nosecchi, L. Thompson, C. Silva, Hammond, Mallet, Foot, Runge, Hansen, Jameson, Carpenter, Webber, Raney. Third row: H. Lorenzen, Hood, Villalobos, Leonard, Evans, Polonsky, Purcell, Hall, Schwartz, Klemenok, Hardin, R. Shell. Back row: McNulty, Ice, Tolman, Wasson, Musso, Runge, Donovan, Katen, Lemos, A. Hansen, Mossi, V. Hansen.







BY NOW, you've met our school, our teachers, and most of the fellows and gals. You know all about what happens in the regular routine of classes, but that is not all we do here at P. H. S. Oh, no! We have publications to put out, clubs to become a part of, music to sing and to produce, and drama to present. None of these organizations is compulsory, but, no doubt, you'll be wanting to become a part of them, for we all enjoy these various activities. So if you'll come with me, now, I'll show you a bit about each one and you can take your pick and join whichever one you would like. C'mon, and we'll look around . . . . .





BOYS' LEAGUE CABINET: Back row—Raney, Zimmerman, F. Volkerts, Bloom, W. Volkerts, Howell, Goree. Front row—Spaletta, Klemenok, Mr. Axt, Naye, Milner, Carothers.

GIRLS' CLUB CABINET: Back row—Olsen, Christiansen, Grewe, Maddalena, Heney. Second row—Miyano, Lundberg, Harris, Purvine, King, Miss Brown. Front row—York, Boysen, Byce, Forster, Starck.

## *Boys' League*

THE BOYS' LEAGUE sponsors a program at least once a month, highlighting the current sport by a movie or talk by someone prominent in the sport being featured. Indoor sports in the boys' recreational room are supervised by the cabinet, which is also the co-sponsor of the Thanksgiving baskets.

## *Girls' Club*

THE GIRLS' CLUB welcomes all Soph girls with a Big-and-Little Sister Party, and sends the Senior girls on their way with beautiful corsages. Between these two main events, there are skating parties, talent programs, fashion shows, interesting speakers, educational movies, and teas for the girls of P. H. S. The cabinet helps to distribute Thanksgiving baskets to needy families.





*M. Hughes*

# The Trojan



FALL STAFFS: Editorial—Byce, Schwartz, Norfolk, Hughes. Business—Cardwell, Peck, Naye.

SPRING STAFFS: Editorial—Norfolk, Ascherman, Anderson, Byce. Business—Matney, Evert.

Bottom row—Metzger, Harris, Bauer, Furlong, Evans, Merango, Murphy, Norfolk, Byce, Anderson, Vannucci, Purvine, Kawase. Second row—Schuster, Carothers, Joseph, Brody, Jensen, Nissen, Hendrix, Miss Korts, Hughes, Bell, Legarreta, Reid, Gregg. Back row—Carroll, Brownstein, Ascherman, Bouckhout, Halter, Matney, Evert, Forster, Tunzi, McEvoy, Finkelman, York, Thomas, Garzoli, Antognini.

## FALL

Editor—Margaret Hughes.

Associate Editors — Lorraine Byce, Priscilla Norfolk.

Sports Editor—Jack Schwartz.

Business Managers — Larry Cardwell, Bill Naye.

Reporters—Virginia Pereira, Verlie Merango, Josephine Forbes, Inez Liddle, Wilbur Volkerts, Doris Swanberg, Marie Anderson, Connie Murphy, Avivah Finkelman, Shirlee Rosen, Elsie Tunzi, Shirley Gregg, Kathryn Bell, Harold Ascherman, Carol Purvine, Florence Forster, Bessie Evans, Joe Halter, Bill Peck, Norma Vannucci, Lily Miyano, Dee McEvoy, Art Cader, Leo Evert.

## TROJAN STAFF

## SPRING

Editor—Lorraine Byce.

Associate Editor—Priscilla Norfolk.

Assistant Editor—Marie Anderson.

Sports Editor—Harold Ascherman.

Business Managers—Leo Evert, Bud Matney.

Reporters—Ruth Hendrix, Ernestine Bauer, Avivah Finkelman, Verlie Merango, Elsbeth Nissen, Dee McEvoy, Carol Purvine, Bessie Evans, Valentina Garzoli, Kathryn Bell, Alice Kawase, Peggy Thomas, Lydia Antognini, Kathryn Furlong, June Reid, Shirley Gregg, Margaret Harris, Dolores York, Dorothy Legarreta, Jeanne Murphy, James Carothers, Seymour Brody, Henry Jensen, Johnny Schuster, Harold Brownstein, Joe Halter, Burgess Metzger, Benny Carrol, Vernon Thomas, Bob Bouckhout.

A BI-MONTHLY PUBLICATION of four or six pages of news, features, gossip, scandal—that is the Trojan. The editorial staff works hard revising and correcting articles submitted, reading proof, and setting up the “dummy” while the business staff is getting ads and selling Trojans.

In the fall, the staff enjoyed a beach party and a theatre party. Some of the staff attended press conferences at U. C. and Stanford in the fall and in the spring.



# The Enterprise



Bottom row—Matney, Rosen, Cochrane, Bravo, Koontz, Manhold, Purvine. Second row—Evert, Rasmussen, Mahoney, King, Carothers, Ascherman, Klebanoff, Dunaway, Johnstone. Back row—Nelson, Hughes, Antognini, Garzoli, Swanberg, Gregg, Byce, Nissen, Vannucci.



Photography Staff—Gregg, Dunaway, and Johnstone trying to get different angles on Carothers (he got cut out of this picture accidentally; we're sorry).

Business Managers—Bravo, Evert, Klebanoff, Purvine, King, and Matney.

Publicity, Hughes; Sales, Garzoli; Editor, Swanberg; Pictures, Gregg.

Editor—Doris Swanberg.

Picture Editor—Shirley Gregg.

Business Managers—Sam Klebanoff, Jack King, Carol Purvine, Elsbeth Nissen, Elaine Bravo, Shirley Gregg.

Sales—Valentina Garzoli, Edwardine Mahoney.

Publicity—Margaret Hughes, Lorraine Byce.

Photographers—Roy Dunaway, Henry Johnstone, James Carothers.

Art Work—Shirlee Rosen.

Senior Activities and Picture Appointments—Marjorie Wade, Marjorie Cochrane, Norma Vannucci.

Identifications—Ellen Rasmussen, Mildred Nelson.

Typists—Lydia Antognini, Barbara Baugh, Alice Koontz.

Sports Writer—Hal Ascherman.

Clubs Reporter—Dorothy Manhold.

FROM SNAPPING the first picture to distributing the last book, every one on the staff has worked hard preparing the '41 Enterprise. Taking snaps, mounting and captioning pictures, pasting in the "dummy" Enterprise, preparing write-ups, selling Enterprises, getting ads—this is the work we do. Several members of the staff attended press conferences, learning methods used by yearbook staffs of other schools.

We hope you enjoy the annual as much as we have enjoyed preparing it for you.





Front row—Finkelman, Johnson, Z. Smith, Saroker, R. Halter, Berggreen, Swanberg, Manhold, Mahoney, Veronda, Bravo, M. Anderson, Purvine, Vannucci. Second row—M. Nelson, Rasmussen, Burnham, Forbes, Garzoli, Bell, Legarreta, Mortensen, Tunzi, Olsen, A. Christiansen, F. Smith, Z. Smith, Gregg. Third row—Bruhn, Westertorp, Schramm, Bertolone, Patocchi, B. Christiansen, Dorsett, Corliss, Soldate, Juber, Miller, Runge, Hansen. Fourth row—Senn, C. Anderson, Sather, Cochrane, Baker, Baugh, Suttie, Moller, Howell, Koch, J. Halter, Hardin, Roney. Back row—Hall, Fishman, Peoples, Thollaug, Young, Purcell, Garzoli, Mannwieler, Carothers, Klebanoff, Carlson, C. Nelson, Jensen.

## *Honor Society*

FALL '40

Sam Klebanoff.....

Joe Halter.....

Elaine Bravo.....

Marie Senn.....

OFFICERS

President.....

Vice-President.....

Secretary.....

Treasurer.....

SPRING '41

Marjorie Cochrane.....

Ben Young.....

Betty Christiansen.....

Terry Purcell.....

DO YOU ALWAYS get A's? Don't you ever go out on school nights? What do you do in Honor Society? The average student asks these questions of one of our "brainies" and finds that a person with good grades has just as much fun as anyone else and that a lot of this is in Honor Society activities.

The honor students not only have luncheons and dinners here at P. H. S., but participate in district and regional conventions, neighborly dinners and picnics, and the formal initiation of new members and installation of officers. In the past year the Honor Society members here at P. H. S. have been hosts and guests to many different chapters of the California Scholarship Federation.





Back row—Daniels, Oliveira, Leonard, Jones, DeNeuf.  
Front row—Grant, McColly, Nunes, Walder, Sturm, Mr. Day.

## *Traffic*

THE STREETS around this school district would be dangerous if it were not for the faithful traffic boys, with their little red stop signs, warning automobile drivers and pedestrians. Sunshine or rain—morning, noon, or afternoon—they are out directing traffic and making it possible for us to cross the streets without being hit by an auto, and to drive without the fear of striking someone. We take this safety more or less for granted, but the boys really deserve quite a bit of credit which is rarely mentioned. The faithfulness of the traffic officers has prevented many accidents and has made the district near our school one of the safest in the community.





Front row—Tresch, Moore, V. Hansen, Finkel, Ferrara, Bettinelli, Jacobs, Gibbs, Carstensen, Lemos, Carlson.  
 Second row—Mr. Norton, Polonsky, Andresen, D. Zimmerman, Villalobos, Grant, Coster, Tuck, Carpenter, Pozzi,  
 Mossi, Mr. Rearden. Third row—Golosman, Oliveira, Wasson, H. Hansen, Antognini, Chandler, Rearden, Sturm,  
 Azevedo, Gobbi, Caletti. Fourth row—Alietti, Larsen, Katen, Burbank, K. Hansen, Johnston, Bonos, Gale, Bionda,  
 Volkerts, Sartori. Back row—Nella, Jensen, Garzelli, Olufs, Kopp, Garloff, Sovel, Jacobsen, F. Zimmerman,  
 Amaral, Burbank, Spaletta.

## *Future Farmers*

FALL '40	OFFICERS	SPRING '41
George Myles.....	President.....	Stanley Jensen
George Berry.....	Vice-President.....	Leopoldo Garzelli
Fred Klemenok.....	Secretary.....	Walt Jacobsen
Walt Jacobsen.....	Treasurer.....	Gwynn Burbank
Bill Spaletta.....	Reporter.....	Bob Tresch
Ted Nella.....	Sergeant-at-Arms.....	Charles Andresen

F. F. A. IS A NATION-WIDE organization to which boys in almost every state, county, and town belong. Sixty-eight of the boys here at P. H. S. are members. These boys are getting experience which will be beneficial to them when, some time in the future, they become full-fledged farmers. All the boys have their own projects which include chickens, cattle, rabbits, hogs, and sheep. These livestock projects are often awarded ribbons and cash prizes at fairs in our community and county and at the annual State Fair in Sacramento. Our local boys hold a dance each year, as well as other social functions.





- 1—Feeding time for the pigs.
- 2—F. F. A. officers and sponsor, Mr. Norton.
- 3—Even the sheep pose for the camera.
- 4—Stanley Jensen and his project.
- 5—These pigs are anxious for their food.
- 6—Project of Charles Andresen.
- 7—Johnny Hackman and Mr. Norton show off Johnny's sheep.
- 8—Seems pigs are always hungry, doesn't it?
- 9—Bet that cow's name is Blackie!
- 10—Harold Johnstone and chickens.
- 11—At the Agricultural Fair at Kenilworth Park.
- 12—More of Harold's chickens.





A CAPPELLA:—Front row: Matthias, Stommel, Sorensen, Christiansen, Frizzi, Hamilton, Mahoney, DeGroot, Malone, Frati, Barron, Gossage. Second row: A. Evans, B. Evans, Forbes, Baker, Cochran, Bravo, Bradberry, Aretz, Hendrix, Fowler. Third row: Keller, Frankel, Andresen, Howell, Hamilton, Mero, Baugh, Cluver, Figone, Frese. Back row: Noriel, Nelson, Ricci, Dorsett, Canton, Summ, Guintoli, Strom, Trayler, Bilbro.

GIRLS' GLEE—Front row: Webber, Stanford, Giorgi, Moore, Gaither, Genazzi, Young, Bradberry, Mahoney, Figone, Rodgers. Second row: Fowler, Christiansen, Clark, LaFranchi, Johnson, Issel, Cluver, Frati, Stengel, Corda. Back row: Carlsen, Stommel, Donovan, Bonos, Rippin, Nosecchi, Patocchi, Newell, Petersen, Oluf, Schramm.

## Choral

FALL '40

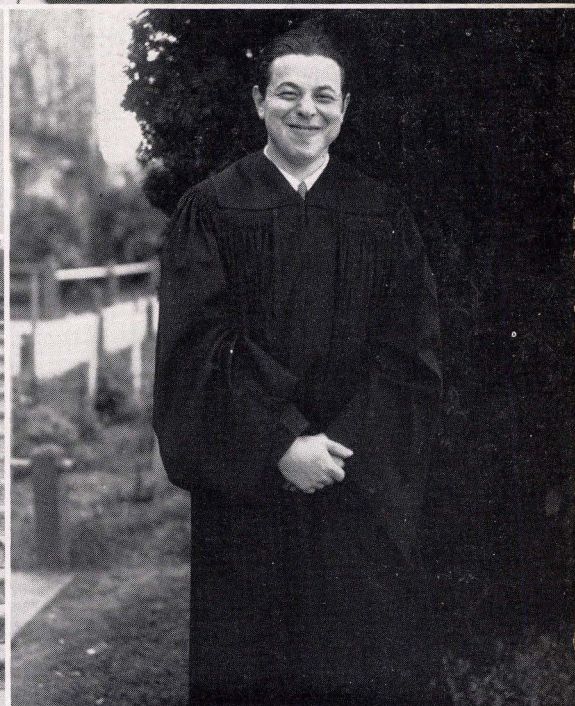
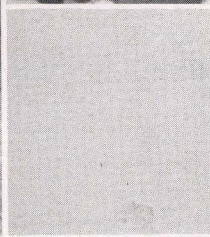
Kenelm Keller.....	President.....	Bill Hamilton
Josephine Forbes.....	Vice-president.....	Curtis Guintoli
Bob Howell.....	Secretary.....	Louise Figone
Frank Raney.....	Treasurer.....	Dena DeGroot
Laverne Fowler		
Richard Traylor.....	Scribes.....	Alyne Evans

SPRING '41

GOWNED in their wine-colored robes, the A Cappella Choir helped to furnish the musical setting for our Christmas program and our graduations, as well as in the Petaluma Spring Concert and the County Musical Festival. The choir has sung for local service clubs and the Women's Club, upon their invitations.

THE GIRLS' GLEE has participated in many musical school functions.





Top left—Josephine Forbes.

Top right — (top row) Young, Bradberry, Forbes, Cluver, Cochrane; (bottom) Figone, Evans, Mahoney, Gossage, Bravo, Baugh.

Bottom left—(top row) Trayler, Frizzi, Figone, Guinoli; (bottom) Evans, Hamilton, DeGroot.

Bottom right—Max Frankel.



## Band and Orchestra

**BAND:** Front row—Thomas, Soroker, Rosenbloom, Summ, Kimberk, Carothers, Fehler, Rudolph, Stewart, Gorce, Hardin. Second row—Paula, Lichau, Patterson, DeNeuf, McNulty, Schuster, Gregg, Young, Nelson, Carroll. Third row—E. Grundstrom, Lorenzen, Laymance, Govaerts, Owen, Nakamura, Forman, Purvine, Calvert, Liddle, Weston. Back row—Martin, Rauey, Hall, Musso, F. Grundstrom, Thompson, Pedrazzini, Mr. Hatfield.

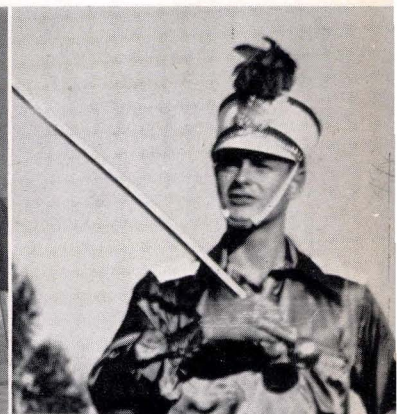
**ORCHESTRA:** Front row—Shell, D. Keller, L. Keller, Fehler, Pedrazzini. Second row—Broderson, Billman, Golosman, Mr. Hatfield, Fehler, Soroker, Gorce, A. Lichau, Gregg, Young, E. Lichau, Cornilsen, Moller. Third row—Purvine, Martin, Schuster, McNulty, Naye, Thompson, Guernsey.



THE P. H. S. BAND of this year has been the finest group in years, holding many concerts and playing for our football games. They got third prize in the Sonoma County Armistice Day parade, and two members were chosen to attend the annual All-State Band Convention, with players from five states.

OUR ORCHESTRA was equally outstanding. In addition to playing for graduation, school plays, and other programs, they participated in the May Spring Concert. Many individuals merit recognition for excellent performances throughout the year.





- 1—Band performs for football fans.
- 2—Trombone Quartet: Otto Thompson, Arthur Peoples, Maurice Hall, Robert Keller. Mr. Hatfield.
- 3—Drum-Major Fred Martin.
- 4—String Quartet: Geraldine Billman, Leah Keller, Bennett Young, Richard Shell. Mr. Hatfield.
- 5—Woodwind Ensemble: Fred Martin, Alice Lichau, Shirley Gregg, Bennett Young, Ruth Saroker, Douglas Fehler. Mr. Hatfield.
- 6—Reed Ensemble: Clyde Nelson, Clarence Hardin, Bill Rudolph, Ruth Saroker, Douglas Fehler. Mr. Hatfield.
- 7—Brass Ensemble: Harry McNulty, Weldon Owen, Fred Martin, Frank Raney, Otto Thompson, Maurice Hall. Mr. Hatfield.





Scenes from the school play, "June Mad": 1—Doug looks at Marjorie's ankle while Denton holds her hand. 2—Duane takes Ruth by surprise. 3—A tender scene between Marjorie and Denton.

## *Dramatics*

BEFORE A PLAY can be presented, there's a lot of work in preparation. After trying out several students, the cast is chosen, and lots of time is spent learning lines and practicing together. A day or so before the play, the actors practice in make-up and costume. In the meantime, the stage setting has been fixed and properties have been gathered together. When the play is presented, we relax and watch it without realizing how they have worked, and we think, "Gee, aren't they swell!"

"JUNE MAD," the school play—Ruth Hendrix, Denton Winn, Duane Shaw, Himmy Silver, Priscilla Norfolk, Douglas Frese, Anita Hughes, Kenelm Keller, Lorin Goree, Barbara Hardin, Helen Beffa, Jack King.

"THREE'S A CROWD," given at an assembly—Harold Rodland, Violet Patocchi, Zelda Smith, Seymour Brody, Tom Wilson.

"THE RING AND THE LOOK," given at several service clubs—Tom Wilson, Betty Dene Brugge, Elsbeth Nissen, Seymour Brody, Gloria McClure, Norma Vannucci, Valerie Everett, Peggy Burnham, Priscilla Norfolk, Ruthe Dickie.

"CHILDREN OF THE INN," Christmas Play—Norma Vannucci, Sophie Bonos, Jack King, Violet Patocchi, Seymour Brody, Lucille Petersen, Douglas Frese, Tom Wilson, Himmy Silver, Denton Winn, Lorin Goree, Kenelm Keller.

"THE LIVING WASHINGTON," written by Miss Olivi—Himmy Silver, Helen Beffa, Denton Winn, Elaine Bravo, Priscilla Norfolk, Duane Shaw, Norma Vannucci.

"SPEED," January graduating class play—Dorothy Branson, Ethel Zagerman, Harold Johnstone, Mary Ramacciotti, Larry Cardwell, Lucille Petersen, Valerie Everett, Lorin Goree, Maxine Plank, Frank Raney.

"GUNSHY," June graduating class play—Leo Evert, Elaine Bravo, Himmy Silver, Margaret Hughes, Richard Koch, Kenelm Keller, James Carothers, Betty Brugge, Les Brians, Maurice Hall.

"THERE'S ALWAYS TOMORROW," presented at several clubs—Tom Wilson, Margaret Phillips, Betty Dene Brugge, Violet Young.

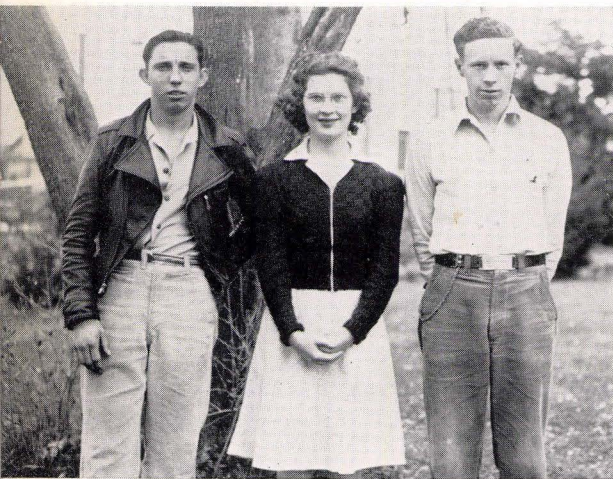
"SUNSET BECOMES RHYTHM," presented at several clubs—Pat Talamantes, Elaine Bravo, Seymour Brody, Kenelm Keller, Barbara Hardin, Elsbeth Nissen, Lorin Goree, Himmy Silver, Marjorie Yearsley, Sophie Bonos, Helen Beffa, Denton Winn.





- 1—This is Norma as the mammy in the George Washington play.
- 2—Setting for the Christmas pageant.
- 3—This is Elaine as the maid in the George Washington play.
- 4—Ruth has the family perplexed in this scene from "June Mad."
- 5—Dorothy comforts Lorin in "Speed."
- 6—The femme fatale of "June Mad" shows off for the family.
- 7—Cast from the George Washington play.





- 1—"We were absent the day class pictures were taken and were the only kids who showed up to have them re-taken."
- 2—"You can see a scene similar to this any noon on our fire escapes. (A few extra came when they saw the camera.)"
- 3—"We're used to going up and down stairs, but are not used to having our pictures taken at a time like this."
- 4—"Lucky winners of the speech contests with their sponsor, Miss Olivi. Top row—J. Carothers, H. Silver; bottom row—D. Manhold, Miss Olivi, Z. Smith."
- 5—"Our band in formation at a football game. Aren't they wonderful?"





- 1—Bus building before completion.
- 2—June Senior Play cast.
- 3—Bus building after completion. Quite a change, isn't it?
- 4—Constance and Tom show off some of their art work.
- 5—Gwladys, Eleanor and Marleigh are waiting for something.  
You'll have to ask them what it is.
- 6—F. F. A. judging team.
- 7—The boys evidently haven't been taught how to sit on a bench.  
People usually lean against the back instead of sitting on it.
- 8—The photographer looks a little unsteady on those piled up benches.
- 9—"Put your hands down, please."





NOW, SOPH, if you'll come with me, I'll show you all our "he-men" and tell you about our teams. You will see them in action and posing for the camera. After you have seen them, you will be better able to decide which sport you like best. It might be baseball, football, basketball, or another of the many sports offered at P. H. S., but whatever it is, we're sure you'll get a lot of fun out of being a P. H. S. man. So, c'mon, I can see you're anxious to meet them.





Top row—Mezzera, Jacobsen, Maddalena, Spaletta, Noriel, Hughes. Second row—Naye, Goree, Wedel, Skoog, Hackman, Sovel. Third row—W. Volkerts, Klemenok, Zimmerman, Peck, Allen, Howell. Bottom row—Sturla, F. Volkerts, Groves, Nelson, Battaglia, Koch.

## Football

UNDER THE watchful eyes of Paul "Peewee" Lathrop, head coach, and his assistant and line coach, Dan Benedetti, the Trojan football team had a none too successful season, with one win, three losses, and one tie. In the practice season they were victorious three out of four times, beating the Berkeley Hi reserves, Fort Bragg, Analy, and then losing to a strong team from Woodland. In the league games they defeated Tamalpais, lost to Vallejo, Napa, Santa Rosa, and then knocked San Rafael out of the championship by battling to a tie with them. Mezzera and Maddalena were chosen all-league by the Vallejo board, while Skoog and Jacobsen were given honorable mention.

THE "B" CLASS football team enjoyed a better season than did their big brothers by coming into the last game of their schedule undefeated and untied in league competition. Coach Milt Axt had some fine boys working under him and they all did their part in this successful season. In practice games they beat Napa, tied San Rafael and Redwood City, defeated Analy, tied and then later defeated Santa Rosa. In the league play they went right through their opponents, defeating Tamalpais, Vallejo, Napa, and then they were defeated for the championship by San Rafael.



1. Noriel around end.
2. Nakamura going places with the ball.
3. It's a sad, sad affair.
4. Peck expecting a pass.
5. Where's the ball?
6. Klemenok throws a pass.
7. Fumble!







COACHES — (top) Reyburn, tennis; Blalock, track; Axt, baseball, "B" football; (bottom) Benedetti, "A" football line coach; Lathrop, "A" football; Schuster, basketball.

### "A" CLASS SCORES

#### Practice Games:

Petaluma	7	Berkeley	0
Petaluma	16	Fort Bragg	0
Petaluma	12	Woodland	19
Petaluma	19	Analy	0

#### League Schedule:

Petaluma	6	Tamalpais	0
Petaluma	3	Vallejo	7
Petaluma	0	Napa	13
Petaluma	10	Santa Rosa	13
Petaluma	14	San Rafael	14

### "B" CLASS SCORES

#### Practice Games:

Petaluma	19	Napa	0
Petaluma	6	San Rafael	6
Petaluma	0	Redwood City	0
Petaluma	27	Analy	0
Petaluma	0	Santa Rosa	0
Petaluma	13	Santa Rosa	0

#### League Schedule:

Petaluma	27	Tamalpais	7
Petaluma	13	Vallejo	0
Petaluma	20	Napa	6
Petaluma	6	San Rafael	7

"A" CLASS—(front row) Johnsen, Henricksen, Katen, Polonsky, K. Skoog, Luiz, Runge, Hamilton, Huntley, Dorsett, Donovan, Bostrom, Martin, Spaletta, Mezzera, Noriel, Garloff; (back row) Hackman, Issel, Raney, Pelton, Larsen, Jacobsen, Sovel, Bransen, Hughes, W. Jensen, Strom, Wedel, B. Skoog, Lyle, H. Jensen, Maddalena.

"B" CLASS—(front row) Suez, McCapes, Thompson, Milne, Tolman, Pelton, Liddle, Gard, Schwartz, Nakamura, Sturla, Battaglia, Churchfield, Koch, Howell, Carlson, Weston; (back row) Groves, Evans, Wlter, Rodland, Nelson, F. Volkerts, Chandler, Pohlmann, Allen, W. Volkerts, Zimmerman, Spear, Henricksen, Burbank, Thomas, Foster, Jensen.





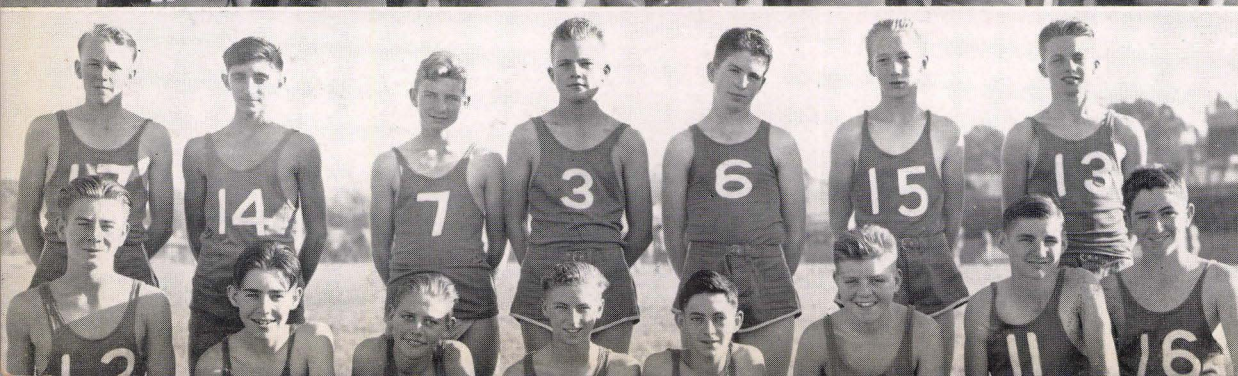
## Basketball

THE 1940-41 LEAGUE basketball season proved none too successful, as the "A" class squad ended its season in sixth place, while the "B" class team finished in the cellar. The "A" team won three and lost three of its regular pre-league games, and although some games were lost by big scores, much was expected of the boys in league competition. High hopes were held for winning some games this season, for the team had many veterans returning from the year before. Their hopes were soon washed away, however, and they climaxed the season with their second loss to Santa Rosa, and the results stood 2 games won, 6 lost.

ALTHOUGH the "B" class won and lost the same number of practice games as did the "A's," they did not fare so well in league competition. In a total of eight league games, the boys could eke out only one victory.

THE "C" basketballers had a fairly successful season, with two wins against three defeats. They scored a total of 92 points, while their opponents bucketed 110. Richard Michael was high scorer for the season.

A CLASS—(front row) Jacobsen, Figone, Rose, Peck, Noriel, Naye, Mezzera, Schuster; (back) Young, Riewerts, Kramer, Mattei, Durando, Evert, Murphy, Johnson, Garloff, Ascherman. B CLASS (front row) Thomas, Schwartz, Battaglia, Nelson, Sturla, Zimmerman, Mannweiler; (back) Suez, Luiz, Lorenzen, Pinkerton, Groves, Runge, Tolman. C CLASS—(front row) Gearhart, Young, Nelson, Peck, Cochran, Bettinelli, Michael, Purcell; (back) Suttie, Marcus, Milner, Allen, Campbell, Jennings, Maus.





### "A" CLASS SCORES

Petaluma	23	San Rafael	42
Petaluma	17	Healdsburg	12
Petaluma	18	Sebastopol	23
Petaluma	14	Santa Rosa	33
Petaluma	28	Tamalpais	22
Petaluma	37	Vallejo	52
Petaluma	28	Napa	32
Petaluma	25	Santa Rosa	41

### "B" CLASS SCORES

Petaluma	20	San Rafael	27
Petaluma	17	Healdsburg	16
Petaluma	17	Sebastopol	31
Petaluma	16	Santa Rosa	23
Petaluma	13	Tamalpais	26
Petaluma	25	Vallejo	44
Petaluma	13	Napa	26
Petaluma	8	Santa Rosa	16

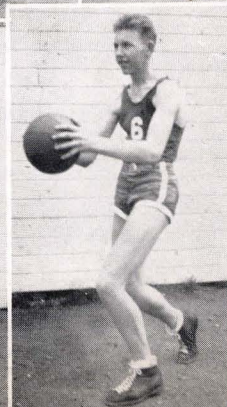
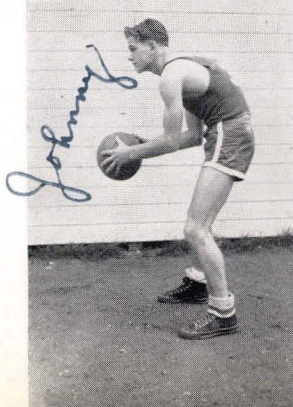
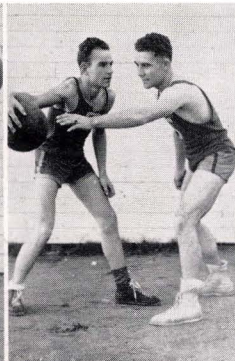
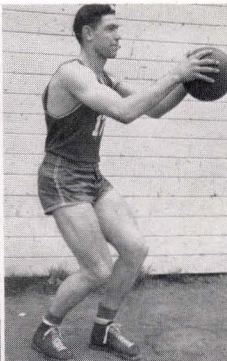
### "C" CLASS SCORES

Petaluma	25	San Rafael	21
Petaluma	26	Analy	23
Petaluma	16	Santa Rosa	21
Petaluma	18	Analy	27
Petaluma	7	Santa Rosa	18

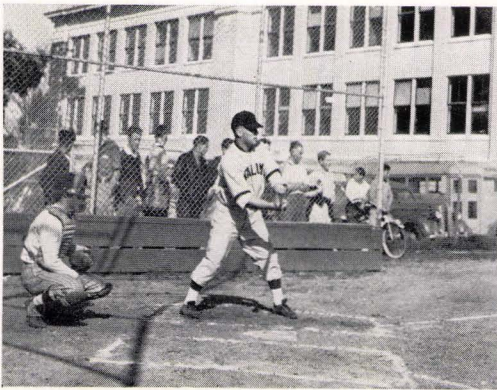


*Joe Riewert*

Top row—Figone, Jacobsen, Riewerts, Peck and Naye, Norich, Schuster.  
Bottom row—Nelson, Sturla, Schwartz, Zimmerman, Runge, Guez.







Maddalena socks one!



Hughes waits for the ball!

## Baseball

AFTER TYING for the championship with Tamalpais in the 1940 season, the Trojans were heavy favorites to be the lone winners this season, but the team suffered greatly from graduation of three or four veterans, and they did not do as well as everybody expected.

The practice season was not so successful, as many of the second string players were inserted into the lineup for the experience, and as a result, one game won, four lost, and one tie was all they could do.

The league season started off as expected, until with three wins already behind them, the Trojans lost to San Rafael Hi 6-5, to make them the underdogs. On the next week, the locals were defeated 4-0 by the league leading Santa Rosans, to put them away out of the picture.

The results:

Petaluma	4	Analy	2
Petaluma	6	Healdsburg	4
Petaluma	3	Vallejo	1
Petaluma	5	San Rafael	6
Petaluma	0	Santa Rosa	4
Petaluma	1	Napa	3

(Due to press-time requirements, results with Tamalpais could not be posted.)



Front row—Klemenok, Spaletta, K. Skoog, Peterson, Hamilton, Battaglia, B. Bouckhout, Garloff, Bonos. Second row—Maddalena, B. Skoog, Jensen, Jacobsen, W. Bouckhout, Bostrom, Pelton, Katzen, Mezzera, Hughes, Vietheer.



Front row—Zimmerman, Mezzera, Naye, Spaletta, Howell, Carothers, Ralston, Ascherman, Jacobsen. Second row—Bloom, Skoog, Wedel, Goree, Noriel, Peck, Garloff, Allen, Schwartz, Mr. Reyburn. Third row—Hughes, Purcell, F. Volkerts, Klemenok, W. Volkerts, Koch, Scott, Nakano, Gossage, Joseph. Back row—Dorsett, Henricksen, Nelson, Lyie, Maddalena, Kramer, Rossotti, Cader, Battaglia, Groves.

## Block P

ALL STAR—Jacobsen, Noriel, Peck.

FOOTBALL—Allen, Battaglia, Dorsett, Groves, Goree, Hackman, Henricksen, Howell, Hughes, Jacobsen, Koch, Klemenok, Lyle, Maddalena, Mezzera, Nelson, Naye, Noriel, Peck, Rossotti, Schwartz, Skoog, F. Volkerts, W. Volkerts, Wedel, Zimmerman.

TENNIS—Carothers, Cader, Hall, Kramer, Koch, Ralston, Raney, Scott, Schuster, Young.

TRACK—Antognini, Bello, Bloom, Evans, Joseph, Luiz, Milne, Naye, Noriel, Peck, Poehlmann, Spaletta, Sovel, F. Volkerts, Weston, Zimmerman.

BASEBALL—Bouckhout, Garloff, Hughes, Jacobsen, Maddalena, Schwartz, Skoog, Mezzera.

BASKETBALL—Jacobsen, Noriel, Peck.



1—Frank bears down on a forehand. 2—The team: (back) Coach Reyburn, Ascherman, Kramer, Young, Carothers; (second) Hall, Scott, Schuster, Ralston (mgr.); (front) Koch, Nakano, Purcell. 3—Mike Hall tries for a backhand. 4—Hal and Jack take it easy after a hard set. 5—Dare Scott, Petaluma's N. B. L. champion. 6—That famous Kramer serve.



## Tennis

FALL—The Trojan tennis team, led by Dare Scott and Jack Ralston, who both finished their second straight season without a defeat, swept to its second consecutive N. B. L. championship and finished one of the most successful seasons for many years. Both doubles teams, composed of Frank Kramer and James Carothers in the first doubles, and Terry Purcell and Harold Ascherman in second doubles, lost but one match apiece. Sumao Nakano, in third singles, was not so successful, due to lack of experience.

SPRING—Losing only Jack Ralston by graduation, the Petaluma net team won its third consecutive North Bay League championship this spring. Dare Scott finished his third undefeated season of play and represented the N. B. L. in the North Coast Section finals at Berkeley. Sumao Nakano stepped into the second singles spot, and Richard Koch took over third singles. The first doubles team of James Carothers and Frank Kramer continued from the fall season, while Hal Ascherman and a variety of partners—Maurice Hall, Ben Young, Terry Purcell, and John Schuster—played second doubles.



Front row—Christiansen, Michael, Laney, Krause, Bello, Sturla, Volkerts, Gard, Thompson, Eaton, Green, Fujita, Thomas. Second row—Stewart, Marcus, Tresch, Luiz, Poehlmann, Bloom, Zimmerman, Schwartz, Young, Purcell, Gerhardt, Carlson, Peck, Antognini. Back row—Suttie, Milne, Matney, Fehler, Henriksen, Vyeniolo, Larsen, Gunheim, Sovel, McCord, Campbell, Evans, Smith.



1—Sprinting the hundred. 2—Bill shows the boys how it's done. 3—Taking the high jump. 4—The track team limbers up. 5—Track team has an audience. 6—Loping around the track.

## Track

THE TRACK TEAM was faced with a terrific handicap this season in that there was no track on which to work out. Coach Bill Blalock had the largest turn-out for track that the school has had in quite a while, and under his supervision 16 boys placed in the sub-league at Anal High School. At the following league meet in Santa Rosa, Evan Zimmerman won the low hurdles, and at the North Coast meet, he again placed first. Harold Poehlmann took a fourth place in the 220 at the league meet, but he remained unplaced at the North Coast meet.

In a practice meet, Tamalpais won all three classes by a score of 166-57. Healdsburg achieved the same results, as they won 132-96.





G. A. A. CABINET

Front row—Donovan, Bettinelli, Figone,  
Miss Olmsted, Waite. Second row—Olsen,  
Maddalena, Carmody. Top row—Coch-  
rane, Evans, Byce.

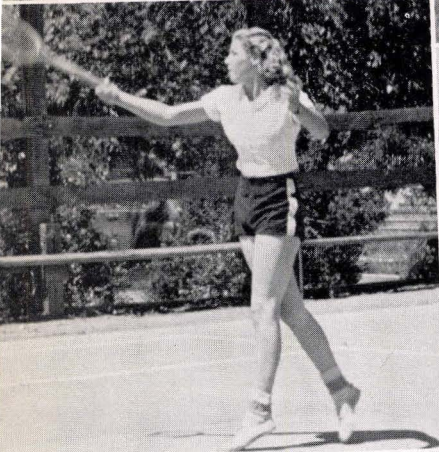
## G. A. A.

President .....	Charlotte Maddalena	Secretary .....	Bessie Evans
	Treasurer .....		Dorothy Waite
Speedball .....	LaVerne Donovan	Tennis .....	Dorothy Bettinelli
Hockey .....	Maxine Evart	Archery .....	Dorothy Carmody
Volley Ball .....	Louise Figone	Track .....	Margaret Byce, Marjorie Cochrane
Basketball .....	Emma Olsen	Baseball .....	Lorraine Byce

THE GIRLS' ATHLETIC ASSOCIATION includes the feminine athletes of P. H. S. Their sports are seasonal, consisting of volley ball, hockey, speedball, basketball, baseball, and track. The teams in G. A. A. are divided according to classes, each playing to win the "finals" in the various sports.

The cabinet attended the W. A. A. Play Day at U. C. in the spring, and were hosts at the Sonoma County Play Day in Santa Rosa in May, 1941.







# Activities of the Seniors

## JANUARY, 1941

**JIM ANDERSON**—Jim came to P. H. S. late in his senior year and so did not take part in any P. H. S. activities.

### LEON ANDERSON

**MILDRED ARFSTEN**—Millie was a Girls' Club representative, a Big Sister, and the Secretary of the Stamp Club.

**EDWARD AVILLA**—Ed was a member of the Science Club for two terms.

### WARREN BARBER

**JESSIE BERGER**—Jessie was in the Sewing Club in '38 and '39.

**RAY J. FIELDS**—Ray was in the Rifle Club, the Senior Legion, and the Auto Club.

**VALERIE EVERETT**—Val was a transfer from San Rafael High. She was in the Bowling Club and in the Senior Class Play '41.

**LORIN GOREE**—Lorin took part in many of the school's dramatic productions.

**NORMA GOSSAGE**—Norma was a member of the Skating Club and Indoor Game Club.

**HELEN GUTHRIE**—Helen was very active in A Cappella and was in the Operetta.

**HAROLD JOHNSTONE**—Harold was one of the outstanding F. F. A. boys. He won several awards for his F. F. A. activities. He was in the Senior Play and on the Trojan Staff.

**DON KRESKY**—Don was in the Rifle Club.

**JEAN MUNRO**—Jean was a member of the Mineralogy Club.

**ELMA MATTSON**—Elma was a transfer from Mission High School.

**GEORGE MYLES**—George was the President and the Watchdog of F. F. A. and the Sophomore Boys' Representative.

**ALICE NELLA**—Allie was in both the Local and State Honor Society several times. She was the Social Secretary for the Senior Class of '41 and a privileged student, and a member of Indoor Games Club.

**VIRGINIA PEREIRA**—Virginia took part in many P. H. S. activities: Rally Committee, Trojan Staff, Town Hall Club, Big Sister, Privileged Student, and dance committees. She was also the Treasurer of her Senior Class.

**LUCILLE PETERSON**—Lucille was a member of the Indoor Games Club and the Girls' Glee Club. She was in both the Christmas and Senior Class plays.

**MAXINE PLANK**—Maxine was in A Cappella and Girls' Glee, and the Operetta. She was a member of the Bowling Club and took part in the Senior Play.

**JACK RALSTON**—Jack took a very active part in Tennis, Basketball, and Track. He earned a block P and two stars. He was also in the Golf Club and the Tennis Club.

**HENRY RAMACIOTTI**—"Bib" was a member of the Camera Club, a Traffic cop, and in the Senior Legion.

**MARY RAMACIOTTI**—Mary was the President of the Indoor Games Club and took part in the Senior Class Play.

**FRANK L. RANEY**—Frank was the President of the Low and High Senior Class. He was on both the B and A Class Football teams, and on the Tennis team. He was a member of the State Honor Society, A Cappella Choir, and the Block P Society.

**EDWARD ROSSETON**—Ed was a member of the Rifle and Modern Science Clubs, and the Senior Boys' Representative.



1—Harold and Ethel engage in serious conversation.  
2—Hot spot from the Senior Play.  
3—Snap from Senior Banquet.

**DOROTHY BRANSEN**—Dot was in our A Cappella Choir for three years, and in '39 was the vice-president. She was also the Recording Secretary of the '41 Senior Class. She took part in many other activities.

**LAWRENCE CARDWELL**—Larry took part in Interclass Basketball, Volley Ball, and Swimming. He was also a member of Boys' League, Finance Committee, and the Trojan.

**ALVIN CHURCH**—Alvin was a member of the Modern Science Club, the Merit Committee, and took an active part in many Interclass Sports.

**ROBERT CROZIER**—Bob was a member of the F. F. A.

**NORMA DUFFY**—Norma was in A Cappella for three years and in Girls' Glee in '39.

**BILL DYE**—Bill took part in many Interclass Sports and was a member of the Traffic Squad, Local Honor Society, and Track.



**NORMA ROSSETON**—Norm was G. A. A. Block P girl. She was in Girls' Glee and the Senior Girls' Representative.

**JOE SABACCA**—Joe was a member of the Photography Club.

**JACK SCHWARTZ**—Jack was a member and Secretary of the Block P Society. He was on the baseball and football teams. He was also in Honor Society, A Cappella, and the Rifle Club. He was on the Enterprise and Trojan Staffs.

**PAULINE SILVERA**—Pauline was the Treasurer of the G. A. A. and a Block P and Star member of the group.

**GENE SIMMONS**—Gene was the Chief Executive and Vice-president of the Rifle Club. He was also in the Auto Mechanics Club and on Traffic.

**JENNIE VERONDA**—Jen was the Social Secretary of Girls' Club and the Student Body. She was active in G. A. A., Honor Society, the Rally Committee, and many other committees.

**CARL SCHLENER**—Carl was a member of the Camera Club, the Auto Mechanics Club, and on Traffic.

**MARJORIE WADE**—Margie was in Boots and Saddles and the International Clubs. She was on the Enterprise and Trojan Staffs and on several dance committees. She took part in the Senior Play.

**ETHEL ZAGERMAN**—Ethel was in the Indoor Games Club, the Senior Play, and the Senior Girls' Representative.

## JUNE, 1941

**ALICE ADAMS**—Alice was a transfer from Mission High School in San Francisco.

**PETE ALLENA**—Pete took part in "C" Class Basketball, Interclass Baseball, Track, and Boxing. In '39 he was President of the Sport Club.

**MARIE ANDERSON**—Marie was a member of the Rally Committee, Big Sister Committee, the Town Hall Club. She was on both Local and State Honor Society. In '41 she was the Business Manager and Assistant Editor of the Trojan.

**WARREN ANDERSON**—Warren was a member of the Rifle Club for three years.

**LYDIA ANTOGNINI**—Lydia was in the Skating and Crepe Paper Clubs. In '40 and '41 she was on both the Trojan and Enterprise Staffs.

**HAROLD ASCHERMAN**—Hal was a member of the Tennis and Basketball teams, and the Block P Society and A Cappella. He was the Trojan's Sport Editor and on the Enterprise Staff. In '39 he was President of the Sophomore Class.

**ALVIN BADENHOP**—Alvin was on the Trojan and Enterprise Staffs. He was a member of the Rotary Vocational Club and the International Club.

**ROSIE BAHM**—Rosie was a member of the Honor Society in '40.

**BARBARA BAKAR**—Bobbie was a member of the Badminton Club, Boots and Saddles, and the Trojan Staff.

**EVELYN BAKER**—Evelyn was in the A Cappella Choir, the Riding Club, and in State Honor Society. She took part in many of our school programs.

**JUNE BARBER**—June was on several dance committees, and in '41 she was the class Social Secretary.

**KATHLEEN BARBONI**—Kathy was in G. A. A., the Crepe Paper Club, and in the May Day Festivals. She was also a Big Sister.

**ELLA BARNES**—Ella was a member of the Golf Club and the Crepe Paper Club, and in '39 a Privileged Student.

**BARBARA BAUGH**—Barbara was a G. A. A. All Star and Block P girl. She was a member of the Archery Club, Riding Club, Town Hall Club, A Cappella Choir, and the Enterprise. In '40 and '41 she was in Honor Society.

**HELEN BEFFA**—Helen was in G. A. A., the Badminton Club, and participated in many dramatic programs.

**GEORGE BERRY**—George was the Secretary and Vice-president of F. F. A.

**DICK BILBRO**—Dick was active in Interclass Track, Basketball, and Football. He was a member of the A Cappella Choir, and the Rotary Vocational Club, and one of our yell-leaders in '40 and '41.



JANUARY SENIOR PLAY CAST

**SOPHIE BONOS**—Sophie was in many of the Dramatics programs. She was also in the Girls' Glee Club, the Paper Craft Club, and the Skating Club.

**PIERINA BORDESSA**—Pierina was the G. A. A. Scribe in '39 and a member of the Crepe Paper and Bowling Clubs.

**ELSIE BOYSEN**—Elsie was a Privileged Student and a member of the Book Club.

**MYRA BRADBERRY**—Myra was a member of the Mineralogy Club, Girls' Glee Club, and the A Cappella Choir.

**MILDRED BRADSTREET**—Mildred was in the Skating and Knitting Clubs.

**ELAINE BRAVO**—Elaine was the Treasurer and Scribe of the A Cappella Choir, the Social Secretary of the Junior and Senior Classes, a member of Town Hall and State Honor Society, a Big Sister, and a Business Manager of the Enterprise.



**LESLIE BRIANS**—Les was a member of the Rifle Club and F. F. A. He was on the Football and Basketball teams.

**MARJORIE BRODERSON**—Margie was in the Needlework Club and in Orchestra.

**BETTY DENE BRUGGE**—Betty was the Vice-president of the Indoor Games Club and the Secretary of the Junior Class. She took an active part in Dramatics and Honor Society and was on the Senior Constitutional Committee.

**JACQUELINE BUCHOLTZ**—Jackie was on the Sophomore, Junior, and Senior dance committees.

**PEGGY BURNHAM**—Peggy was a member of the Town Hall Club, Red Cross Knitting Club, and Local Honor Society.

**LORRAINE BYCE**—Lorraine was a member of the G. A. A., the Merit and Finance Committees, and the Tennis Club. She was Associate-Editor and Editor of the Trojan and a member of the Cabinet.



FALL SENIOR OFFICERS—(top) Silcox, Olsen, Keegan; (bottom) Peoples, Lyle, Milner.

**ART CADER**—Art was on the Track Team in '39 and the Tennis Team in '39 and '40.

**LOUIS CANTON**—Louis was a member of the Modern Science Club, the Rifle Club, the Rotary Vocational Club, and the A Cappella Choir.

**DON CARLQUIST**—Don was a transfer from Gonzaga. He was in Rotary Vocational and Tennis.

**JAMES CAROTHERS**—Jimmy was in Honor Society for several semesters and is a Gold Seal Bearer. He was in the Band, on the Merit Committee, on the Trojan and Enterprise Staffs, and a member of the Cabinet. He has earned his Block P for Tennis.

**AGNETE CHRISTENSEN**—Agnete was the Secretary of the Stamp Club, a member of the Girls' Glee, the A Cappella Choir, and a Privileged Student.

**ANNE CHRISTIANSEN**—Anne was in the G. A. A., Honor Society, and was a Big Sister.

**BETTY CHRISTIANSEN**—Betty was the Secretary of Honor Society, a member of Girls' Glee, and she took part in many of the Girls' Club Fashion Shows. She was a member of the Awards Committee.

**RUTH CLARK**—Ruth was in Girls' Glee. She served on many of the banquet and dance committees. She was in our Girls' Club Fashion Show.

**BARBARA CLUVER**—Barbara was in G. A. A. for three years and was a member of A Cappella.

**MARJORIE COCHRANE**—Marge was the President of Honor Society in '41. She took an active part in G. A. A., A Cappella, Town Hall Club, Trojan, Riding Club, and Enterprise Staff.

**DOROTHY CUNNINGHAM**—Dotty was in the Badminton Club and Local Honor Society.

**RUTH DICKIE**—Ruth was a member of the Golf Club and she took part in the May Day Festival.

**BERTHILE DONOVAN**—Bert was in the Glee and Ice Skating Clubs.

**BILL DORSETT**—Bill played Football, Baseball, and Volley Ball and has earned his Block P. He was in the A Cappella Choir and F. F. A. He was the Sophomore Boys' Representative.

**OLIVE DOUGLAS**—Olive was a member of the Flower Arrangement Club and the Tennis Club.

**ROY DUNAWAY**—Roy was in the Rifle Club, on the Enterprise Staff, and on the Merit Committee. He was Vice-president of the Junior Class.

**BESSIE EVANS**—Bess was on the G. A. A. Cabinet, a member of A Cappella, Girls' Glee, and Trojan. She was a Big Sister and Sophomore Girls' Representative.

**LEO EVART**—Leo played Football, Basketball, and Golf. He was a yell leader and on the Rally Committee in '40 and '41. He was a member of A Cappella, Rotary Vocational Club, and the Trojan's Business Staff in '41.

**DOUGLAS FEHLER**—Doug made All State Band and was on our Track Team.

**LOUISE FIGONE**—Lou was the Secretary of the Indoor Games Club, Manager in G. A. A., Secretary of A Cappella, and Secretary of the Senior Class of '41.

**AVIVAH FINKELMAN**—Avivah was a member of the Book Club, the Riding Club, the Trojan Staff, and both Local and State Honor Society.

**NORMAN FISHMAN**—Norm was in the Biology Club, Rifle Club, Rotary Vocational Class, and State Honor Society in '39, '40, and '41.

**SELMA FISHMAN**—Selm was in the Sewing Club and a Privileged Student in '38 and '39.

**JOSEPHINE FORBES**—Jo was the Vice-President of A Cappella, and a member of the Town Hall Club, Knitting Club, and a Gold Seal Bearer.

**MILTON FORMAN**—Milt was in the Mechanic Club, Interclass Baseball, and Band. He was also on the Traffic Squad.

**LAWRENCE FORNO**—Larry was a member of the Senior Legion, and took an active part in Interclass Baseball and Track.

**FLORENCE FORSTER**—Florence was the Recording Secretary of Girls' Club. She was in Honor Society and several dance committees. She was a Privileged Student and in the Flower Club.



**LAVERNE FOWLER**—Laverne was the Junior Girls' Representative, the A Cappella Scribe, and a member of the Girls' Glee, Skating Club, and the Bowling Club.

**MYRTIS FRATI**—Myrt was in Girls' Glee, the A Cappella Choir, Dramatics, and the Town Hall Club. She was also a Privileged Student.

**LORRAINE FRIIS**—Lorraine was in the Woodwork Club and served on many of the Banquet Committees. She was a Privileged Student also.

**ETHEL FRIZZI**—Ethel was the Treasurer and Scribe of A Cappella, and played in many dramatic productions. She was in the Bowling Club.

**LEOPOLDO GARZELLI**—Leo was a Sharpshooter and Secretary of the Rifle Club. He was also the Vice-President of F. F. A.

**LEWIS HUGHES**—Lewis was in the Science Club. He played Baseball and Football and was a member of Block P.

**MARGARET HUGHES**—Margaret was on the Cabinet, the Trojan Editor, a member of the Tennis Club, G. A. A., Honor Society, and our Representative to Girls' State.

**BERNICE JACOBSEN**—Bernice was in Girls' Glee and the International Club.

**EARL JACOBSEN**—Earl was a member of the Rifle Club.

**MARK JENSEN**—Mark was a member of F. F. A.

**STANLEY JENSEN**—Stan was the President of F. F. A. He played "C" Class Basketball and Interclass Baseball.

**AGNES JOHNSON**—Agnes was in the Girls' Glee Club, the Skating Club, and the International Club.

**JOAN JOHNSON**—Joan was a member of Honor Society in '41 and a member of the Flower Arrangement and Bicycle Clubs.

**HENRY JOHNSTONE**—Hank was the photographer for the Trojan and Enterprise.

**ESTHER JORGENSEN**—Esther was a member of the A Cappella Choir, the Girls' Glee, Music Appreciation Club, and the Skating Club.

**TAMARA KAUFMAN**—Tammie was a Privileged Student, a member of the Indoor Games Club, and Girls' Club Representative.

**ALICE KAWASE**—Alice was in G. A. A., the Sewing Club, the Trojan Staff, and a Privileged Student.

**HARRIETTE KEEGAN**—Harriette was the Social Secretary of the Student Body and the Low Senior Class. She was also a member of the Merit Committee, Honor Society, and Boots and Saddles.

**KENELM KELLER**—Kenny was the President of A Cappella in '41. He was a member of the Golf Club, Rotary Vocational Club, and the International Club. He was also in the school play.

**JUNE KINDLE**—June was in the Glee Club, the Badminton Club, and the Bicycle Club.

**DAVID KING**—Dave was in the Rifle Club and played Interclass Basketball and Volley Ball.

**SAM KLEBANOFF**—Sam served as Business Manager of this year's Enterprise, and was low Junior Class Representative and President of the Honor Society.

**RICHARD KOCH**—Rich was the President of the Student Body, Secretary of Boys' League, Secretary of Finance, and Secretary of the Sophomore Class. He played Football, Basketball, and Tennis, and was a member of Block P. He was also a Gold Seal Bearer.

**ELSA KOLSTAD**—Elsa was a member of the Boots and Saddles Club and the Sewing Club.

**ALICE KOONTZ**—Alice was a member of the Badminton Club, the Band, and the Enterprise Staff.

**GERALD KNUDSEN**—Jerry was on Traffic and took part in Interclass Track, Baseball, and Volley Ball.

**FRANK KRAMER**—Frank played Basketball, Tennis, and Golf. He is a member of Block P and the Vocational Class.

**CLARA KURTENBACH**—Clara has been on several dance and banquet committees. She was a member of the A Cappella, the Golf Club, and the Drama Class.

**DOROTHY LACK**—Dorothy was a member of the Riding Club.



SPRING SENIOR OFFICERS—(top) Figone, Bravo, Miyano; (bottom) Goree, Noriel.

**HILDA LaFRANCHI**—Hilda was a member of the Crepe Paper Club and Girls' Glee.

**ELSIE LAVIO**—Elsie was in G. A. A. and the Crepe Paper Club.

**ROGER LAWSON**—Roger was a Sharpshooter, and Treasurer of the Rifle Club. He took an active part in Tennis, Golf, Interclass Baseball and Volley Ball.

**ALICE LICHAU**—Alice was in the Band and the Orchestra.

**INEZ LIDDLE**—Inez was a member of the Riding Club, the Golf Club, and the Glee Club.

**RHODA LYALL**—Rhoda was in the Sewing Club and Knitting, Skating, and Bowling Clubs.

**BOB LYLE**—Bob played Football and was a member of the Block P Society. He took part in several Interclass Sports. He was the Vice-president of the Low Senior Class, and a member of the Merit Committee, and Indoor Games Club.



## STEVE MACHE

CHARLOTTE MADDALENA—Charl was the President of G. A. A., a G. A. A. Block P and All Star player, a member of the Cabinet, and the Girls' Club Cabinet. She was also on the Awards Committee and in the Indoor Games Club.

EDWARDINE MAHONEY—Edwardine was the Secretary of the A Cappella, a Gold Seal Bearer, a member of Town Hall, the G. A. A. Cabinet, and Girls' Glee.

SADIE MAKI—Sadie was a transfer from Polytechnic High School in San Francisco.

LESTER MANE—Lester served on many art and dance committees.

FRED MARTIN—Fred made All State Band and was the Drum Major in '40. He was also on the Track and Football teams.

KENNY MARTIN—Kenny played Football and Volley Ball and was a member of the F. F. A.



Floor Show given by Shirlee, Jack, June, Norman, Winifred and J. T.

ROBERT MATNEY—Bud was on the Track team, and on the Trojan Business Staff.

RICHARD MATTEI—Dick played on the "A" and "C" Basketball teams and in Interclass Football and Basketball. He was on the Trojan Staff, and served on several dance committees.

CLARINE MATSUDA—Clarine was a member of the G. A. A., the Sewing Club, and the Junior Dance Committee. She was also a Privileged Student.

ALICE MATSUMOTO—Alice was the Sophomore Girls' Representative. She took part in the Fashion Show and May Day Festival. She was also a Privileged Student.

JEAN McDONALD—Jean was a member of the Bowling and Skating Clubs.

DEA JEAN McVOY—Dee was a member of the Trojan Staff and the International Club.

HARRY McNULTY—Harry was the Sophomore Boys' Representative and the Vice-president of the Senior Class. He was a member of the "C" Basketball team, Rotary Vocational Class, and took part in several Boxing Events.

VERLIE MERANGO—Verlie was a member of Honor Society and the Crepe Paper Club. She served on many dance and banquet committees.

JACK MERO—Jack was a member of the Rifle Club, Orchestra, and the Rotary Vocational Class. He played on the Interclass Baseball, Basketball, and Volley Ball teams.

RUTH MERO—Ruth was a member of A Cappella, Orchestra, and the Skating Club.

HAROLD METCALF—Harold was in the Rifle Club, and played Interclass Volley Ball, Baseball, and Tennis.

## BILL MILNE

RAY MILNER—Ray was the Low Senior Boys' Representative, a member of the Camera Club, and the "C" Basketball team. He also played in Interclass Basketball and Volley Ball.

## THOMAS MITCHELL

LILY MIYANO—Lily was a member of the Indoor Games Club, the Merit, Finance, and Junior Dance Committees. She was the Senior Girls' Representative, and a member of the Trojan Staff.

DONALD MUGGLESTONE—Donald was a member of the Vocational, Camera, and Rifle Clubs.

CONSTANCE MURPHY—Connie was the Secretary of the Golf Club, a member of Boots and Saddles, the Trojan Staff, and Dramatics. She served on many dance and banquet committees.

RUBY MURPHY—Ruby was a member of the Boots and Saddles Club, the A Cappella Choir, and State Honor Society.

BILL NAYE—Bill played Basketball, Football, and was on the Track team, and was a member of Block P. He was a Drum Major, the President of Boys' League, Secretary of Finance, and Junior Class Vice-president.

MILDRED NELSON—Mildred was a member of Town Hall, International Club, and the Enterprise Staff. She was a member of Honor Society, and a Gold Seal Bearer.

ALICE NEWELL—Alice was a member of Girls' Glee, the Skating Club, and the Bowling Club.

ELSBETH NISSEN—Elsbeth was a member of the Golf Club, Tennis Club, Girls' Glee, A Cappella Choir, and Dramatics. She was on several dance and banquet committees.

EDDIE NORIEL—Eddie was the President of the Student Body, Boys' League, and the Junior and Senior Classes. He was on the Football, Basketball, and Baseball teams. He was also a member of A Cappella and Block P.

FLORENCE NOSECCHI—Florence was a member of the Girls' Glee and Paper Craft Club.

ELIZABETH OLBERG—Liz was a member of Girls' Glee and the Golf Club. She took part in the '39 Operetta and the May Day Festival.



EMMA OLSEN—Emma was a member of the G. A. A. Cabinet, Honor Society, and the International Club. She was also a Girls' Representative.

EMMA OLUF'S—Emma was in G. A. A., the Badminton Club, Girls' Glee, and the Orchestra.

JUNE PATOCCHI—June was a member of Girls' Glee, the Skating Club, Bowling Club, and State Honor Society. She was also a Junior Class Officer.

BILL PECK—Bill was on the Track, Basketball, and Football teams and has earned his Block P and All Star Award. He was the Junior Class President, Sophomore Boys' Representative, Vice-president of Boys' League, and Trojan Business Manager. He was also Athletic Manager on the Cabinet.

ARTHUR PEOPLES—Art was in the Band and Honor Society. He played Interclass Volley Ball and Baseball, was the Secretary of Citizenship (Cabinet), and President of the Low Senior Class.

MARIE PETERSON—Marie was in the Girls' Glee Club and the Flower Arrangement Club. She was the Sophomore Girls' Representative.

LLOYD PFANDER—Lloyd was a member of the Science Club in '38 and '39.

TED PICCO—Ted was a Gold Seal Award member of our Honor Society. He was also a member of the Rifle Club, Senior Legion, and Citizenship Committee.

HARVEY PIEPER—Harvey was in the Rotary Vocational Class and the Camera Club. He took part in "C" Class Basketball, Interclass Baseball, Basketball, and Volley Ball.

CAROL PURVINE—Carol was the Vice-president of Girls' Club and a Big Sister. She belonged to G. A. A., Honor Society, Band, Orchestra, and the Trojan and Enterprise Staffs.

ELLEN RASMUSSEN—Ellen was a member of the Town Hall Club, the Enterprise Staff, Honor Society, and the Awards Committee. She was the Secretary of the Junior Class.

REMO RICCI—Remo was on Traffic, in Auto Mechanics, and played Interclass Baseball.

ROSE RODGERS—Rose was a member of the Crepe Paper Club.

VIC ROSSOTTI—Vic played Baseball and Football in '38 and '39.

LILLIAN SATHER—Lil was in the Town Hall Club, Honor Society, the Golf Club, and Bicycle Club. She was the Secretary of the Sophomore Class.

GLORIA SCANAGATTA—Gloria was a member of the Sewing Club.

WILLARD SHELL—Willard was a member of the International Club and the Trojan Staff.

GARNETT SILCOX—Garnett was in the Flower Arrangement Club, and the Fashion Show. She was the Secretary of the Senior Class, also.

HIMMY SILVER—Himmy was a member of the Rally Committee, the Track and Football teams, and the Rotary Vocational Class. He was in the School Play, and has won several Public Speaking Contests.

BUD SKOOG—Bud played Football and Baseball and is a member of the Block P Society. He was a member of the Vocational Club and the Boys' Indoor Games Club.

ALBERT SMITH

CLINTON SMITH—Clint played Football in '38 and '39.

ZOLLIE JEAN SMITH—Zollie was a member of the Stamp Club and Honor Society. She was also a Privileged Student.

TERRY SNYGG—Terry was the President of the Science Club, a member of the Golf team and "B" Class Basketball team, and the Rotary Vocational Class.

HAZELE SORENSEN—Hazele was a member of the A Cappella Choir and the Riding Club.

DOROTHY STORNETTA—Dorothy was a member of the Flower Arrangement Club.

DORIS SWANBERG—Doris was the Enterprise Editor, and a member of the Trojan Staff, Honor Society, and Town Hall Club, and was a Gold Seal Bearer.

LAWRENCE SYCHROWSKY—Lawrence was a member of the Rifle Club and the Rotary Vocational Class.

CATHERINE THOMAS—Catherine was in the Band and the Girls' Glee Club.

MAY TILLIN—May was a member of the Town Hall Club, the Book Club, and the Red Cross Knitting Group.

MELVIN TOMASETTI—Melvin played Interclass Baseball in '39 and '40.

RICHARD TRAYLER—Dick was a member of the A Cappella Choir.

ELSIE TUNZI—Elsie was a member of the Crepe Paper Club, the Merit Committee, the Trojan Staff, and the Honor Society. She was the Social Secretary of the Junior Class.

NORMA VANNUCCI—Norma was the Secretary and Treasurer of the Sophomore Class, Secretary of the Flower Club, a member of the Enterprise and Trojan Staffs, the Town Hall Club, and Dramatics.

DOROTHY WAITE—Dot was on the G. A. A. Cabinet, and a member of the Archery Club.

PAUL WEDEL—Paul played Football and was in the Block P Society. He was a member of the Golf Club, Interclass Basketball, Volley Ball, and Track teams, and the Camera Club.

VELMA WESTERTERP—Velma was on several dance committees, and in Honor Society.

MARIAN YASUDA—Marian was a member of G. A. A. and the Sewing Club.

MARJORIE YEARSLEY—Margie was in Dramatics and took part in the School Play. She was also in the Flower Arrangement Club.

FRED YOUNG

VIOLET YOUNG—Violet was in Girls' Glee, the Melody Maids, the Indoor Games Club, and Dramatics.





- 1—Town Hall Discussion Group.
- 2—From the chemistry window on a class picture day.
- 3—Jim and pals idle away the noon hour.
- 4—Riding club.
- 5—First initial and last name, please.
- 6—Mr. Durst inspects Durst Field.
- 7—Rally Committee.
- 8—Ambitious, huh?







# **PETALUMA 5-10c to \$1.00 STORE**

**"Petaluma's Own Store"**

STATIONERY — SCHOOL SUPPLIES

114 Main Street

Phone 1640

**C. B. JESSEN**  
INSURANCE OF ALL KINDS

Phone 461

224 Washington Street

**M. VONSEN CO.**  
SEEDS—GRAIN—ROOFING  
GARDEN SUPPLIES

Western Avenue

Phone 327

## **The ADOLPH HOLM COMPANY**

John Deere Implements and Tractors  
DeLaval Dairy Products      Caterpillar Tractors  
Fairbanks-Morse Engines and Supplies

Telephone 45

10-12 Howard St.

## **VAN BEBBER BROS.**

## **ADAMS PAPER BOX & FILLER CO.**

Manufacturers

EGG FILLERS and FOLDING PAPER BOXES

Edith and Jefferson Streets

Phone 346

C. O. Fitzpatrick

R. O. Fitzpatrick

## **FITZ'S COFFEE SHOP**

"If You Don't Eat Here We Both Lose"

Open Day and Night  
Phone 111

154 Main Street  
Petaluma, California

## **FRED NEUNFELDT**

NASH

343 Main Street

Phone 306

## **PETALUMA GENERAL HOSPITAL**

Mr. and Mrs. Wm. Millmeister

Phone 143

## **NEW HOTEL PETALUMA**

**MARK L. LEWIS, M. D.**  
**WAYNE LEWIS, M. D.**

PHYSICIANS and SURGEONS  
Petaluma, California

AN OLD FIRM  
KEEPING  
YOUNG  
AND

UP-TO-DATE

...on...

POULTRY and DAIRY FEEDS

**"6"—PONTIAC—"8"**

Sales and Service

**GENE PAIGE MOTOR CO.**

426 Main Street

Phone 807

**GOLDEN EAGLE MILLING CO.**





Heald students "learn by doing" in these offices. Actual business and banking transactions take place with the promptness, accuracy, and detail found in real business.

## U. S. DEFENSE PROGRAM OPENS GOOD JOBS FOR YOUNG MEN AND WOMEN WHO ARE PREPARED

The United States Preparedness Program has caused an unprecedented demand for trained workers in both the Business and Engineering fields. Plan **NOW** to enter Heald College immediately after your graduation from high school so that you may prepare for a good **JOB**.

### FREE LIFETIME PLACEMENT SERVICE

. . . available to Heald Graduates during their entire business career. Hundreds of well known Business and Engineering firms depend on Heald College for ambitious and capable employees. Hundreds of employment calls are received each year at Heald's and many go unfilled because trained men and women are not available.

For complete information on how to obtain the **JOB** you have in mind, write A. L. Lesseman, Director.

# HEALD COLLEGE

## BUSINESS and ENGINEERING

Established 1863

Van Ness at Post Street ————— San Francisco ————— ORdway 5500

OTHER HEALD COLLEGES AT OAKLAND, SACRAMENTO AND SAN JOSE



**CAVANAGH LUMBER CO.**

Established 1868

LUMBER and MILLWORK

Phone 375

200 E. Washington St.

**MILLER & STERN SUPPLY CO.**INDUSTRIAL, AUTOMOTIVE and MACHINE  
SHOP SUPPLIES

Mechanics Tools—Garage Equipment—Specialties

1435 FOLSOM STREET

SAN FRANCISCO

**FROZEN FOODS & COOLERS, Inc.**

Petaluma, California

322 Western Avenue

Telephone 1560

**Bodega Avenue French Laundry**

MR. and MRS. A. PEDEPRADE, Props.

Telephone 682

557-559 Bodega Avenue

Petaluma

**ROSE PIEZZI**

FLOWERS FOR ALL OCCASIONS

Phone 1393

New Hotel Petaluma Bldg.

**LACE HOUSE FRENCH LAUNDRY**

128 Liberty Street

Phone 342

**The J. J. KING AGENCY**

REAL ESTATE—LOANS—INSURANCE

132 Kentucky Street

Petaluma

Phone 641

**W. P. EVART  
INSURANCE**Office Phone 1695  
21 Western AvenueRes. Phone 58-F-3  
Petaluma**R. W. BURROWS CO.**

PETALUMA DINUBA

EXCELSIOR PRODUCTS

**NORTH BAY MONUMENT CO.**

North Main Street at Cemetery Avenue

P. O. Box 777

PETALUMA

Phone 121-J

IN

1941

IT'S

*The Leader*

Phone 1941

Petaluma's Home-Owned Store

**PETALUMA ELECTRIC  
INCUBATOR CO.**

416 East D Street

Phone 884

"WHEN IT'S FLOWERS, SAY IT WITH OURS"

**WEIS FLORAL SHOP**

CUT FLOWERS, BULBS, SEEDS, PLANTS

We Telegraph Flowers

PHONE 1029

113 WESTERN AVE.

KEEP IN STEP WITH THE TIMES!  
Take All Your Photograph Problems to the**GAINSBOROUGH STUDIO**

MODERN IN EVERY RESPECT

129 KENTUCKY ST.

PHONE 1235

**ROBERTS' LUNCH and  
ROBERTS' SOUND SERVICE**

207 E. Washington St.

Phone 867



**H. A. JEPSEN**

JEWELER

Gifts That Last

119 Kentucky Street

Official Outfitters for Petaluma High School Athletic Teams

**MILNER'S**  
SPORTING GOODS

Phone 93

142 Kentucky Street

**KEIG'S SHOE STORE**

115 Main Street

Phone 71

**GEO. F. MEADER**

OPTOMETRIST

**ANDERSON CLEANERS**

ODORLESS DRY CLEANING

117 Western Avenue

Phone 446

**REX HARDWARE CO.****LE ROY'S**

VARIETY STORE

Next to the New State Theatre

27 Main Street

Phone 359

**RIEWERTS' MARKET**

Free Delivery

ALL MEATS STATE INSPECTED

110 Kentucky Street

Phones 65-66



Paul R. Elmore

Wm. A. Naye

**THE ANTLERS PHARMACY**

The NYAL Store

Corner Kentucky St. and Western Ave.

Phone 999

**MONTESSORO BROS.**

For QUALITY Printing and PROMPT Service

111 Western Avenue

Phone 228

**CHARLES BASCOM**

DENTIST

No. 5 McNear Building

Petaluma

**A. H. ROSS**

JEWELER

159 Main Street

Phone 140

Books

Stationery

**U. S. BAKERY**

BUY THE BEST — WE DO

**GEORGE H. OTT**

STATIONER

139 Main Street

Phone 310



Shoes

Sportswear

### J. C. PENNEY CO.

DEPARTMENT STORE

164 Main Street

Petaluma

### GERVASONI FINANCE CO.

AUTO FINANCING—INSURANCE

110 Main Street

Petaluma

Telephone 95

Watches

Diamonds

Giftwear

### E. I. CAMM & SON

Complete Selection of High School Jewelry

32 Washington St.

Petaluma

Phone 1681

### THE FAIR

STATIONERY—SCHOOL SUPPLIES

153 Kentucky Street

Phone 437

### WATERS & ROSS

can supply you with everything you need in  
MUSIC — MUSICAL INSTRUMENTS  
ACCESSORIES — REPAIRS

533 Sutter Street

San Francisco

### ARCADE BARBER SHOP

Parsons and Goodrich

18 Western Avenue

Petaluma, Calif.

### DeLUXE CLEANERS & DYERS

FOR PARTICULAR PEOPLE

112 Washington St.

Petaluma

Phone 701

SEASIDE GASOLINE and MOTOR OILS

### MURPHEY'S SUPER SERVICE

Norge Washers—RCA Radios—Exide Batteries  
Repairs and Service

THIRD and C

PHONE PETALUMA 53

### CAULFIELD'S MARKET

FOR BETTER MEATS AND QUICKER SERVICE

Government Inspected Meats from Producer to Consumer

426 East Washington  
Phones 1801-1802

(2 Stores)

370 Bodega Avenue  
Phones 492-493

### MURPHY CHEVROLET CO.

CHEVROLETS — OLDSMOBILES  
OK'd USED CARS

424 Main Street

### DR. N. B. RUNDALL

PHYSICIAN and SURGEON

## MATTEI BROS.

THE HOME OF SMART STYLES

— in —

Sportswear — Clothes — Furnishings

— for —

BOYS AND YOUNG MEN

### THE DIAMOND MATCH CO.

LUMBER—MILLWORK—PAINT—HARDWARE  
GLASS—CEMENT—NAILS

Where a Dollar Does Its Duty

JACK HUGHES, Mgr.

101 E. Washington St.

Telephone 27

If It's New—Mattei's Have It!

### MONTGOMERY WARD & CO.

THE COMPLETE DEPARTMENT STORE

Satisfaction Guaranteed

131 Kentucky Street

Petaluma, California



## The Associated Banks

Bank of America N. T. & S. A.  
SONOMA COUNTY BRANCHAmerican Trust Company  
PETALUMA BRANCHBank of America N. T. & S. A.  
PETALUMA BRANCHPETALUMA CO-OPERATIVE  
CREAMERY

The Home of

MILK—CREAM—BUTTER  
COTTAGE CHEESE  
BUTTERMILK—SKIM MILK

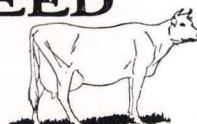
Phones 18-19

Petaluma, California

## DR. ROBT. D. HEALEY

Specializing in All Nervous and Rectal Diseases  
Heart LesionsOffice 19 Main Street  
Office Phone 302Petaluma, California  
Residence Phone 783

## FEED



G.P. McNEAR CO. PETALUMA

## GOREE'S

CLEANING—DYEING—TAILORING

"Send It to a Master"

17 Western Ave. Phones 1084-718 800 Main St.



## FOLLOW THE BEAM!

Young men — young women — your future success depends on the plans you make now.

A business course at MacMaster-Paine College will prepare you quickly and at small cost to secure and hold a preferred type position.

MacMaster-Paine  
CollegeThe Scholarship School  
1311 Sutter Street  
Raystone 4612

Phone 276

615 Main Street

## DR. WALLACE C. NOLES

MODERN CHIROPRACTOR

User of Neurocalometer to locate the cause—  
X-Ray to show how to correct the cause

On the Redwood Highway

Petaluma, California

Coulson Co.  
PETALUMA, CAL.

POULTRY FOODS AND SUPPLIES

## POEHLMANN HATCHERY

Petaluma, California

Salt Lake City, Utah



So refreshing  
with  
lunch



DRINK

*Coca-Cola*

## VOGENSEN CONSTRUCTION CO.

BUILDING CONTRACTORS

100 Washington Street

Petaluma

Yardage

We Supply Your Sewing Needs

Notions

*Leigh's*

Hosiery

155 Kentucky Street

Slack Suits

## U. H. TOMASINI—AUGUST LEPORI

THE BEST INSURANCE (ALL LINES)  
REAL ESTATE—STOCKS—BONDS—INVESTMENTS

Phone 211

30 Washington Street

Petaluma, California

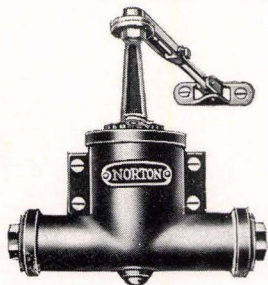
## THE WARDROBE

A. L. PHILLIPS

Under the Town Clock

ONE OF THE GOOD SHOPS IN PETALUMA

## NORTON DOOR CLOSERS



SPECIAL PROCESS COIL

...for...

SCHOOLS

PRIVATE RESIDENCES  
HOUSES

Norton Pacific Sales Co.

673 Howard Street

San Francisco

## DR. HALL WESTON

DENTAL SURGEON

**CALIFORNIA THEATRE**  
PETALUMA  
DIRECTION—T & P. JR. CIRCUIT—

FOR THE BEST SHOWS

## KING'S CREAMERY

Borden's Four Star

Fountain Service

☆☆☆☆

157 Kentucky Street

Phone 1737

## TO THE GRADUATE . . .

Do you know what your life work  
is to be?

Perhaps you would like to learn  
more about some vocations.

If one of your interests is news-  
paper work, you are invited to visit  
our office and discuss your problem  
with our executives.

## PETALUMA ARGUS-COURIER

## BLACKBURN & SORESENSEN

FUNERAL DIRECTORS

Lady Assistant

William S. Sorensen

400 Washington St.

## PIONEER HATCHERY and BREEDING FARMS

Petaluma, California



## CARMER'S CONFECTIONERY

141 Kentucky Street

Phone 319

### JOHN C. MOUNT

Thorough Efficient Service

### LUTHER BURBANK COLLEGE OF COMMERCE

SANTA ROSA

PHONE 442

### ALMA'S FLOWER SHOP

Phone 834

123 Washington Street

Complete Secretarial, Stenographic  
Bookkeeping-Accounting Courses  
Short Courses in Modern Machines  
Underwood Elliot Fisher Bookkeeping  
Machine—Comptometry et cetera

### BRAINERD JONES

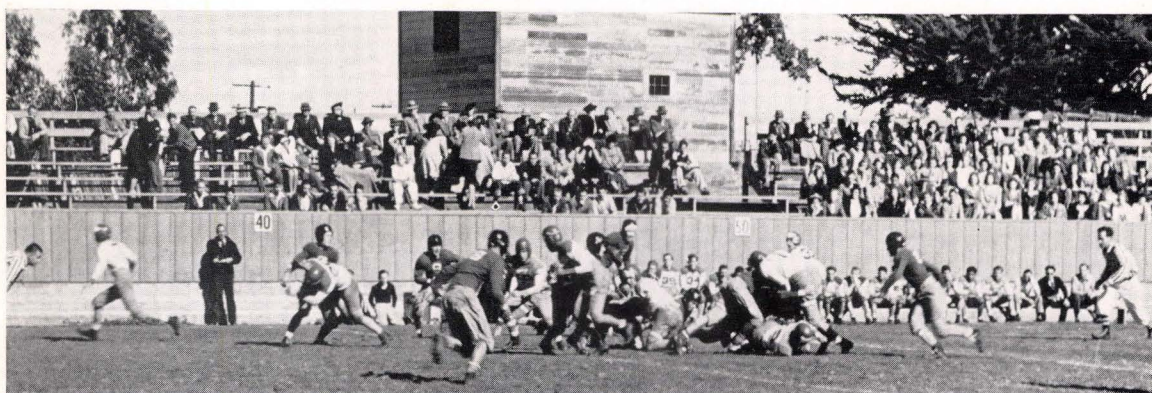
ARCHITECT

226 Washington Street

Petaluma

SUMMER SESSION  
JUNE 23 to AUGUST 29  
FALL TERM SEPTEMBER 8, 1941

WRITE FOR INFORMATION



### HUNT & BEHRENS, Inc.

GRAIN, FEED and POULTRY SUPPLIES

Petaluma, California

140-148 Keller Street

Telephone Petaluma 1246

School, Band and Orchestra Instruments Musicians Headquarters  
Radios, Records, Sheet Music

### THE HARMONY STORE

EVERYTHING IN MUSIC — ED GRUNDSTROM

Telephone 313

Petaluma

94 Western Ave.

### DR. GEO. W. LANE

DENTAL SURGEON

### L & M DRUG CO.

Phones 370-371

### ART'S HAIRCUTTING SHOP

XERVAC HAIR and SCALP TREATMENTS

Wave Cutting

113 Keller Street

### NIELSEN FURNITURE COMPANY

FURNITURE—DRAPERIES—PIANOS  
RUGS—STOVES

145-149 Kentucky Street

Petaluma, California





The coolest, most colorful summer shoe we've ever found! Its two-toned platform wedge gives you comfort and color; its open back, toe and sides bring you every breeze that blows. An easy washer.

Price **\$1<sup>95</sup>** per pair

**AGNEW'S**  
**BROWN & SHOE STORE**

### DOROTHY DURHAM SCHOOL for SECRETARIES, TEACHERS

All commercial subjects, including Gregg, Rowe, Thomas, and Pitman pencil shorthand; and Stenograph (machine shorthand); Teletype and Dictaphone.

364 FLOOD BUILDING San Francisco DOUGLAS 6495

### ROY EVANS REAL ESTATE

LICENSED BROKER

Loans  
Homes—Lands  
Insurance

14 Main Street  
Phone Petaluma 14

### STUART Z. PEOPLES, M. D.

Petaluma, California

Res. 320 Washington Street  
Phone 400

Office 4th and D Streets  
Phone 900

### DR. A. R. ELDER

PHYSICIAN and SURGEON

106 Fourth Street

Petaluma, Calif.

### M. LERER & SONS

AUTOMOTIVE PARTS  
ACCESSORIES

17 E. Washington Street

Phone 918

### WESTERTEP BROS.

PACKARD MOTOR CARS  
INTERNATIONAL TRUCKS

821 Main Street

Phone 1383

### PARKER & GORDON

ALBERS PROVEN FEEDS  
GRAINS  
GARDEN and PET SUPPLIES

### JACK'S RADIO

Radios — Refrigerators — Electric Appliances  
Washers — Ironers — Water Softeners

Phone 930

112 Main Street

### HEROLD DRUG CO.

DEPENDABLE DRUGGISTS

Albert L. Battaglia, Mgr.

Kentucky and Washington Sts.

Petaluma



**Laboratory Control  
Makes Feed  
Quality Certain!**

**POULTRY PRODUCERS  
OF CENTRAL CALIFORNIA**

### DR. E. E. BRYDONE-JACK, JR.

DENTAL SURGEON

Phone 1530

133 1/2 Kentucky Street



We are pleased to have had the opportunity of serving the Petaluma High School, its students and faculty, during the past year.



### PETALUMA PRINTING CO.

136 Kentucky Street

Phone 1082

### DR. M. L. NEILSEN

210 Fourth Street

Office Phone 1704

Res. Phone 343

### TAYLOR'S SUPER SERVICE STATION

Sciberling Tires, Willard Batteries, Full Tread Recapping  
High Pressure Greasing  
Tire Repairing, Battery Charging

Corner Washington and Liberty

Phone 740

### DREES FLORISTS

Member of FLORISTS TELEGRAPH ASSOCIATION

Phone 947

25 Western Avenue

### DR. N. F. JENSEN

CHIROPRACTIC, ELECTROTHERAPY  
COLONIC IRRIGATIONS

Phone 944

21 Kentucky Street

Petaluma, California

### ASCHERMAN'S

Cal's Cash Market

SUPPLIES YOUR WANTS

Gross Building

Phones 1785-1786



### The HAT AND GOWN SHOP

DISTINCTIVE, BUT NOT EXPENSIVE

Phone 1739

133 Kentucky Street

### CLEMENT A. STIMSON, M. D.

204 Main Street

Office Phone 717-W

Res. Phone 717-R

### WOODSTOCK TYPEWRITER AGENCY

ALL MAKES OF TYPEWRITERS

Phone 1082

136 Kentucky Street

FOR ALL GOOD THINGS TO EAT

VISIT THE

**PACIFIC MARKET**

THE STORE FROM WHICH GOOD THINGS COME

The Best Fed Are Healthiest and Happiest

### PETERS & PETERS

Petaluma, California

218-220 Main Street

Phone 350

### WELLER - HOPKINS FURNITURE CO.

Opposite the California Theatre



329 Post Street

**J. B. BLOOM**

Petaluma, Calif.

District Agent—The Mutual Benefit Life Insurance Company (1845)

Resident Agent—Fireman's Fund Insurance Company (1863)

LIFE — FIRE — AUTOMOBILE — MARINE INSURANCE

The Covers for the ENTERPRISE were supplied by

**SILVIUS & SCHOENBACKLER**

423 J STREET

SACRAMENTO, CALIFORNIA



↙  
NOT

*Acknowledgments*

PHOTOGRAPHY: Sunset Studio.

PRINTING: Petaluma Printing Company.

ENGRAVINGS: California Art &amp; Engraving Company.

SPORT PRINTS: Mr. J. A. Olmsted.

BINDING: Bushman-Risen Company.

COVERS: Silvius &amp; Schoenbackler.



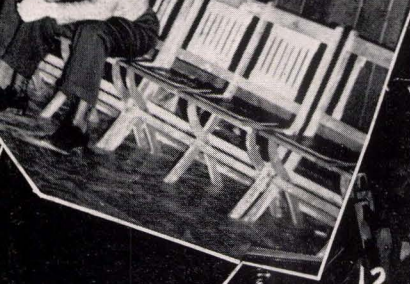
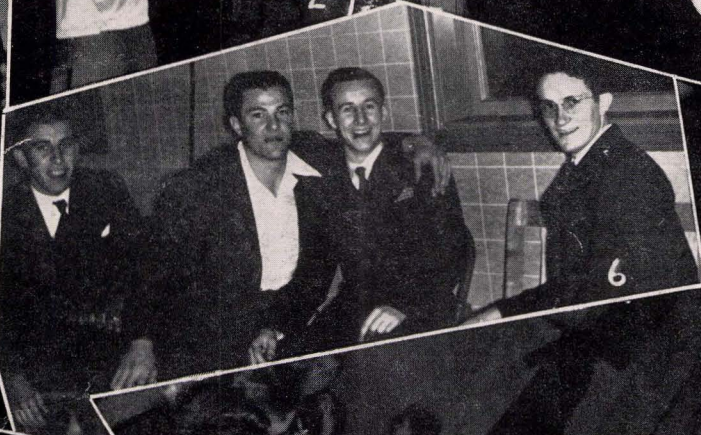
Left hand page:

- 1—It's not such a difficult step. Don't concentrate so hard, Larry and Elaine.
- 2—Art and Sam can't seem to get partners.
- 3—Mr. Reyburn counts the cash.
- 4—Enjoying yourself, June?
- 5—Emily Post would tell you not to play with the tablecloth, even at a football banquet, boys.
- 6—Wall flowers at the Senior Banquet.
- 7—Eat your dinner first and pose afterwards, Seniors.
- 8—Mrs. Facer and Mr. Day seem to be having a good time, but they neglected to look at the camera.
- 9—Faculty stag line at one of the basketball games.
- 10—Carl doesn't seem to agree with Marie's point of view.
- 11—That's Johnnie and Ruth. You'd never know it to look at the picture.
- 12—Our boys deserve this feed after their swell games of the season.
- 13—Margie's hand seems to be the center of attraction. Maybe she uses Jergen's Lotion.
- 14—Mr. Axt certainly has the knack of eating an apple daintily.
- 15—Why couldn't you have moved your hand, Himmy? We'd like to see Miss Korts' face, too.
- 16—Elsbeth and Terry pose for the camera (or is that the usual pose, Terry?).
- 17—Mrs. Blalock ignores Bill and devotes her attention to Bob Heller.

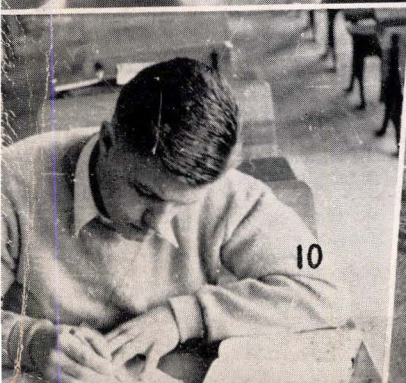
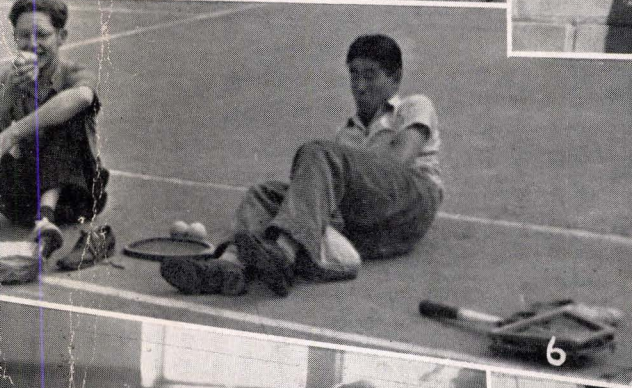
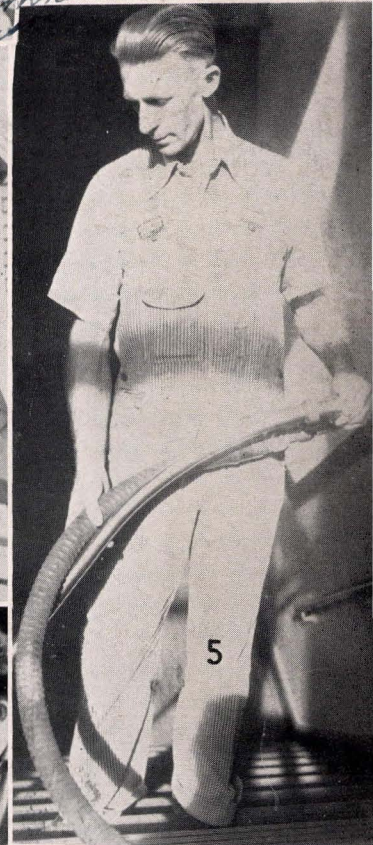
Right hand page:

- 1—Interesting reaction noted in chemistry room.
- 2—Miss Duggan dishes it out at the Football Banquet.
- 3—Ray Heil having a high old time eating lunch.
- 4—To look at Cap and Wild Bill, our team must be having a bad time.
- 5—Turn her on, Mr. Turner.
- 6—Four gals pose—but what happened to Norma?
- 7—George explains while Johnnie looks doubtful.
- 8—Mrs. Campbell tells how to take a frog apart, but Vernice is more interested in the camera(man).
- 9—This is how Leo keeps his girlish figure.
- 10—Demerits, Mrs. Swanson?
- 11—Mind your p's and q's.
- 12—More frogs.













Left hand page:

- 1—Keep your eyes on your copy, Annie.
- 2—Eddie fixing his car.
- 3—Two Jeans, Pauline, and Elizabeth trying not to get their pretty white boots wet.
- 4—The boys are enjoying their lunch (that's Willard behind Alvin).
- 5—Admiring our trophies (posed isn't it).
- 6—Everybody takes time out for lunch.
- 7—Bill makes Fred all purty for cabinet initiation.
- 8—The cameraman had a hard time getting the boys to pose, but they do look sweet, don't they?
- 9—A scene from one of our swell superslobgoshus rallies. Himmy (Dr. Livingstorn) and his followers are searching for Stanley from Analy.
- 10—Loafers in front of the school at noon.
- 11—Tense moment in the game for Ruth and Wilbur.
- 12—Teachers and parents say good-night after the Senior Banquet.

Right hand page:

- 1—"When I count three, smile pretty and hold it."
- 2—Lolling in the sun on the gym steps.
- 3—Loafing on the lawn after lunch.
- 4—Miss Olmsted, our gym teacher, incognito.
- 5—Keep it clean, Mr. Wipner.
- 6—Robert and Sumao take time out from their game for a little lunch.
- 7—Robert takes time out for more lunch.
- 8—Fire!!
- 9—When we don't parade in the halls, we do this.
- 10—This is how to get good grades. (It says here.)
- 11—Uh!!! Have a heart, Mr. Blalock.
- 12—Mr. Hatfield tries to keep cool while the band performs.







