



FRANCISCAN

MDCCCXL A.D.

*Mills*

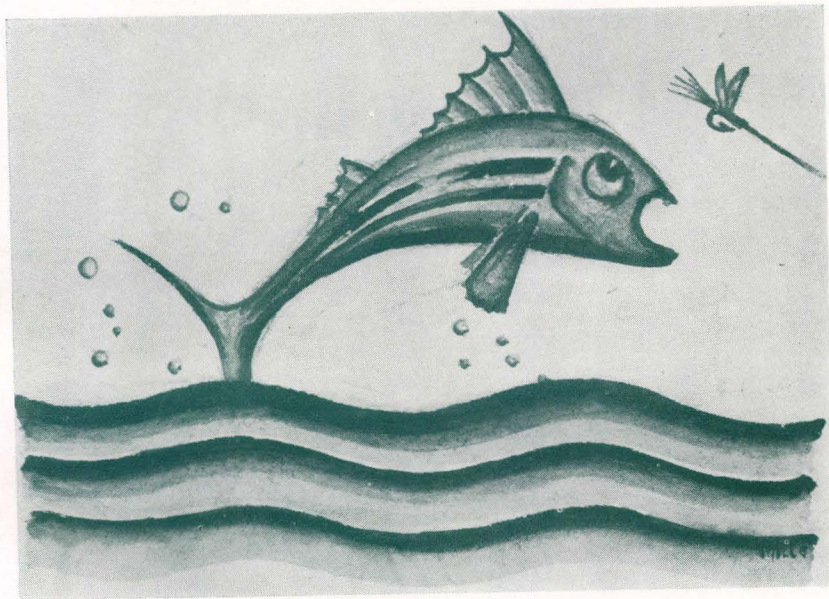
oldentideisrisingtheqo  
theqoldentideisrisingtheqo

THE  
1940 FRANCISCAN  
VOLUME FIFTEEN



PUBLISHED ANNUALLY  
BY  
THE ASSOCIATED STUDENTS  
OF  
SAN FRANCISCO STATE COLLEGE

MEN'S . . . INTRAMURAL . . . WOMEN'S



tide is rising the golden tide is

the golden tide is rising the

COPYRIGHT 1940

*By*

ERNEST MIGUEL  
EDITOR

JAMES F. MARTIN  
MANAGER

# the golden tide is rising

## S T A F F

ERNEST MIGUEL  
EDITOR - IN - CHIEF

JAMES F. MARTIN  
BUSINESS MANAGER

### ASSOCIATE EDITORS

MARGARET MARY SULLIVAN  
WILMA FLOY HILL . . . . EDWARD F. PIERCE

### DIVISION EDITORS

ALEX EDELSTEIN COLLEGE	JOHN PICHOTTO SPORTS
JACK W. HULBERT STUDENT BODY	BETTY ZEHNDER CLASSES
MARGARET (PEGGY) SMITH WOMEN'S SPORTS	WADE PATRICK BRUMMAL ORGANIZATIONS

### ASSISTANT EDITORS

DENA WITTE	FRED BENDER	BOB BUCKLEY
SHERMAN GRANT	EDWIN POOLE	EDWIN SMITH
BETTY DAVIS	JANE HARLIN	DOROTHY TALLIAFERRO
ERNIE BICKNELL	WARREN THORNTON	GENE MALIN
	LOUISE VALLARINO	

### ILLUSTRATIONS

STEPHEN R. MILLS

the golden tide is rising  
the golden tide is rising

## FOREWORD

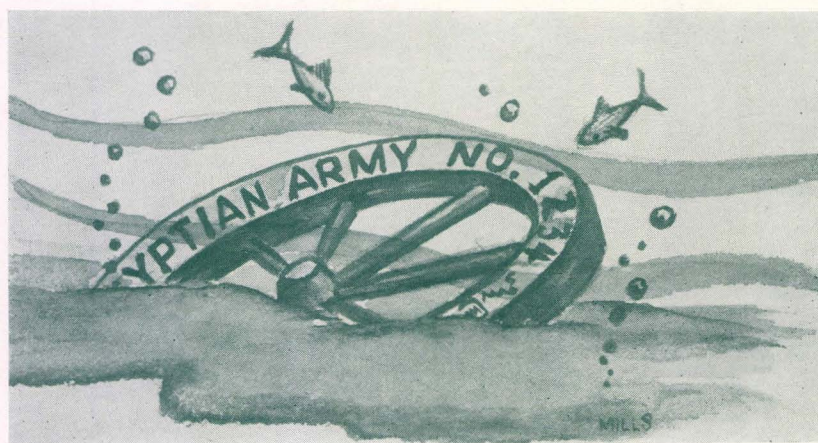
Just as the interplaying major and minor moods of a Bach fugue portrays the spirit of its creator, so do the variegated themes of this Franciscan capture the spirit of its creators—the Associated Students of San Francisco State College. From cover to cover the illustrations of this book interpret the history of the college. The Rise of the Golden Tide from humble beginnings to new glory with an extensive campus is portrayed; we have pictured the sun rising on the new era for our college—San Francisco State's Golden Age; the heartbreaks and disappointments that come with defeat, the thrill of success—all are recaptured in this pictorial record of the last school year.

oldentideisrisingtheqol  
theqoldentideisrisingtheqo

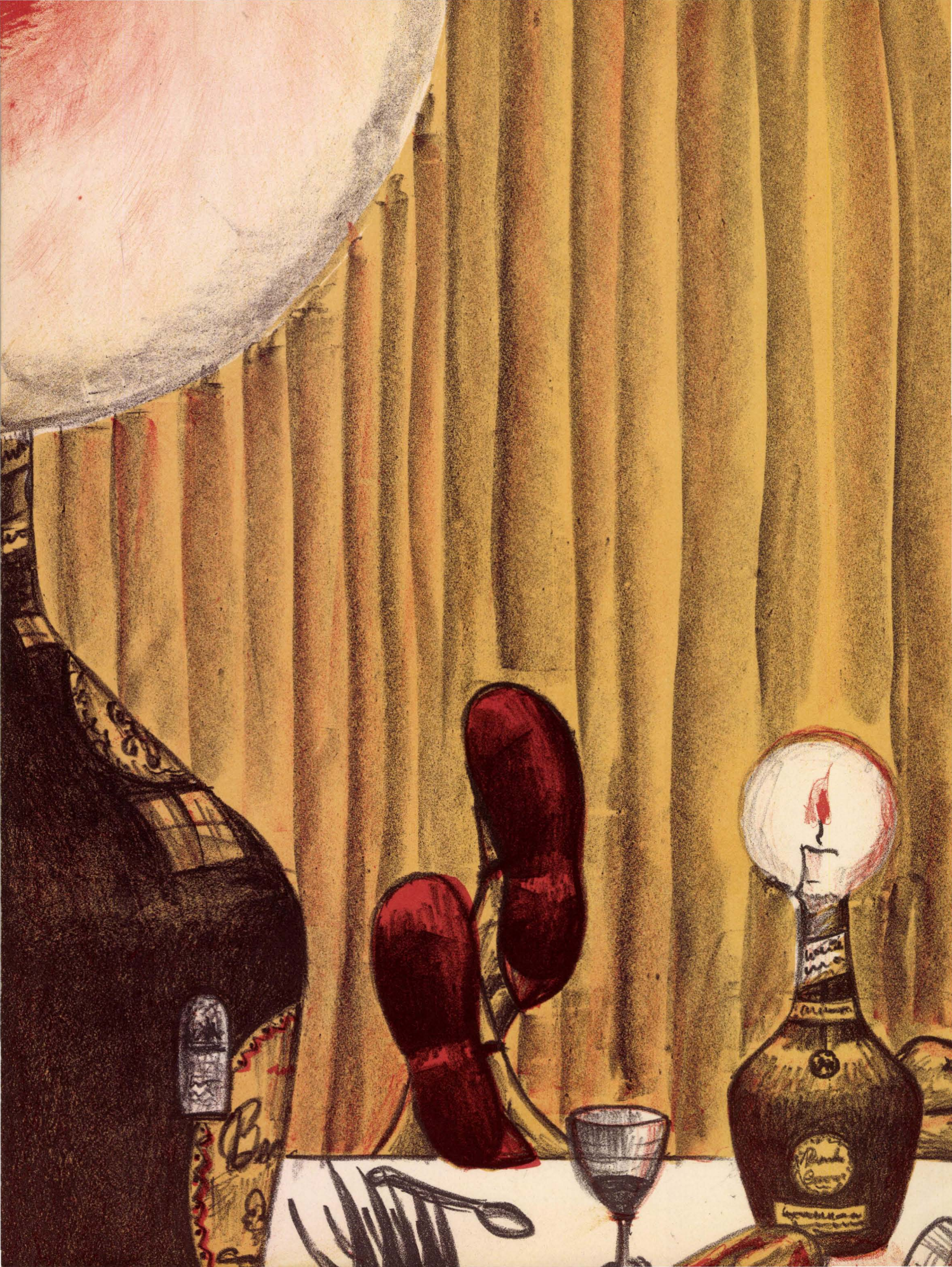


## DEDICATION

TO MR. ROY G. FREEBURG, DIRECTOR OF  
STATE'S FAR-FAMED A CAPELLA CHOIR, FOR  
HIS WORK TOWARD DEVELOPING OUR  
MUSIC DEPARTMENT INTO ONE OF THE  
NATION'S FINEST, THIS BOOK IS DEDICATED.



# ● *Administration*







## ● *The Faculty*



*A new campus site after a ten-year battle.*

## President Alexander C. Roberts

Friend to the students, ardent supporter of the college in the fight for new buildings, Dr. Alexander Crippen Roberts would be an asset to any institution, and this book heralds his thirteenth year as president of San Francisco State College.

## A Long Fight Ends

Leaders in San Francisco State College's quest for a new campus have been President of the College Roberts and Comptroller Leo C. Nee. Following ten years of broken promises, disappointment, frustration, these two are at last able to scan the beginnings of construction on the new site secured through the assistance of State Senator Jack Shelley (*see page 129*).



*Dr. Roberts, Comptroller Nee survey campus.*

# The Board of Deans

Last Stand of hundreds of delinquent students each year is the Dean's Committee, regulatory body over all campus organizations, grade average standards, examination schedules, faculty regulations, petitions for reinstatement to undergraduate standing.

It is before this august body that all newly organized campus clubs and fraternities must present constitutions for official faculty approval, disqualified students present petitions for reinstatements, disgruntled students press claims against college regulations, faculty members.

Importance of the committee has been augmented of late by the increased enrollment, the subsequent rise in college standards, and the disqualification of more and more students with each increase of enrollment.

Members are Dean of the College P. F. Valentine, Dean of the Upper Division John H. Butler, Dean of the Lower Division Walter Homan, Dean of Men David J. Cox, Dean of Women Mary A. Ward.



DR. P. F. VALENTINE  
*Dean of the College*



*Members of the Board of Deans at San Francisco State College*

# Faculty Members

## • ADMINISTRATION

Alexander C. Roberts  
P. F. Valentine  
John H. Butler  
Walter J. Homan  
Mary A. Ward  
David J. Cox  
Sherman L. Brown  
Alexander S. Boulware  
Grace Carter  
Florence Vance  
Emily Curtiss Ray  
Leo C. Nee  
Marie E. Davitt  
Alma Downey  
Perry Bale  
Hilda Brown  
Dorothy Fryman  
Eva C. Hodgson  
Bernice C. Johnson  
Grace Lawrence  
Beatrice McDermott  
Ruth March  
Harold Martin  
Gertrude MacFarland  
Rita McLaughlin  
Lois Polishook  
Edith Randolph  
Alice Rich  
Gladys Underwood

## • TEACHING STAFF

Alice P. Alcutt  
Maurice R. Amsden  
Cecilia Anderson  
Elias T. Arneson

Hugh Baker  
Edna Barney  
Susan Benteen  
Jessie Billingsly  
Edna W. Bock  
V. Richard Boyle  
Jessie Casebolt  
Edward E. Cassady  
Floyd A. Cave  
Roy C. Cave  
Van A. Christy  
Marian C. Cooch  
Olive T. Cowell  
Clara Crumpton  
Marie H. Dony  
Anna V. Dorris  
Blanche W. Ellsworth  
Eleanor E. Ely  
Karl D. Ernst  
Dan S. Farmer  
Frank L. Fenton  
Edna M. Fisher  
Alfred G. Fisk  
Ruth Fleming  
Amy D. Fleming  
Charlotte Folsom  
Roy E. Freeburg  
John Geanacos  
George Gibson  
John Gutman  
Walter A. Hacker  
Naomi E. Haage  
Harold H. Harden  
Ludwig E. Hertz  
Hilda M. Holmes  
Dorris D. Holtz  
William E. Knuth

Agnes Moe Lund  
Ruth Lyon  
Eileen McCall  
Evelyn Mayer  
Lynette Maas Messer  
Luther Meyer  
Nancy Miner  
Bertha H. Monroe  
Stanley W. Morse  
Carlos S. Mundt  
Irene H. Nicoll  
Elene Michell Parmely  
Edith A. Pickard  
Roger G. Preston  
Frank R. Ray  
Lea Reid  
Ruth E. Richards  
Velda Cundiff Row  
Robert D. Rowe  
Elizabeth Selden  
Claude E. Shull  
Alice Spelman  
Evangeline Spozio  
Florence Stephenson  
Ruth Haines Thompson  
Somerville Thompson  
D. W. Simonson  
T. E. Treutlein  
Gladys W. Underwood  
Bernice Van Gelder  
Hermine H. Van Gelder  
Edla Walter  
Raymond L. White  
S. Ruth Witt-Diamant  
William F. Zech



*The College Board, composed of heads of all academic departments.*



*Student  
Administrations*



# EXECUTIVE BOARD OFFICERS

• J. ROBERT SWEENEY

PRESIDENT

• PEGGY SMITH

VICE-PRESIDENT

• FRED W. KLINE

TREASURER

• DENA WITTE

SECRETARY

They used to joke about the changing administrations of South American countries, but the government of the Associated Students of San Francisco State has outchanged the recurrent revolutionary and counterrevolutionary regimes of our southern neighbors.

Six constitutions in five years is the record claimed by the student body of this college, and when Bob Sweeney was elected president last year, he soon discovered the newest literary effort of the Executive Board (entitled: *The Constitution*) being flagrantly violated.

Under the executives of the Student Body (President Sweeney, Vice-President Peggy Smith, Secretary Dena Witte, Treasurer Fred Kline), the main activity of the Executive Board has this year been to establish a work-

able organization. Working on a three-point policy, Sweeney enforced the Constitution, integrated all clubs with the Associated Students and each other, advertised the college locally and nationally.

A shakeup hit the campus, shook several student body organizations to the very foundations, and provided a scholarly step forward when Sweeney's board conducted an extensive investigation of student body activities and organizations, checking the grade averages of all students involved.

Hardest hit by the shakeup was the Forensic Council (president, manager removed from office), Publications (associate editor removed), and Executive Board itself (two class presidents, one representative removed).

# Executive Board

## ● STUDENT REPRESENTATIVES

THELMA RASTAD

LOUISE VALLARINO (Fall '39)

GERRY POLITE (Spring '40)

JACK MADIGAN

JACK FISCHER

PETER COLLINS (Spring '40)

## ● CLASS PRESIDENTS

LEW MORRIS

SENIORS, FALL

ED SMITH

SENIORS, SPRING

BOB ANDERSON

JUNIORS, FALL

JIM KING

JUNIORS, SPRING

JOE EDELSTEIN

SOPHOMORES, FALL

TONY BACICH

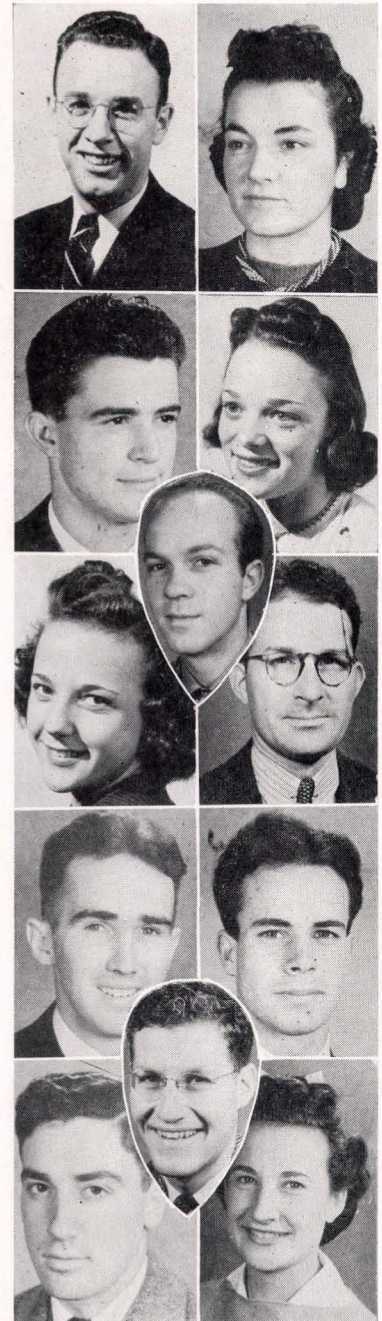
SOPHOMORES, SPRING

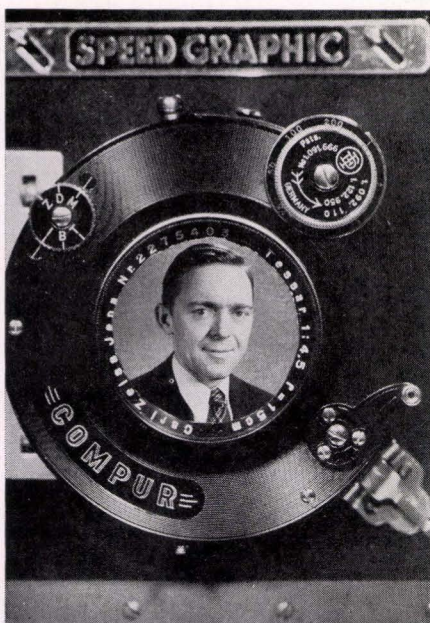
DOROTHY FOPPIANO

FROSH, FALL

IZZY PIVNICK

FROSH, SPRING





HAROLD MARTIN  
*The man behind the news.*

## Public Relations

"Alumni of San Francisco State Who Have Made Good," if and when it is ever published, will necessarily have an honor position dedicated to Harold Martin, State's Director of Public Relations.

Taking over the department when it was first organized in 1936, Martin has since spent his entire time publicizing the college through press releases, photographs and publicity stunts, in building his department into the most effective college news dispensing agency in the San Francisco Bay Area.

From a few scattered stories written by student journalists, State's publicity has grown into thousands of column inches of copy, thousands more of pictures, innumerable wire releases (including several that reached such news organs as *Time Magazine*).

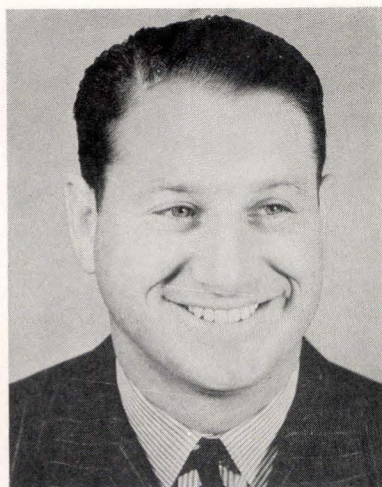
Beside handling the purely publicity side of State's activities, Martin has been augmenting his own department by coaching and managing golf, editing with Ed Pierce the *Alumnus*, aiding in the building campaign, taking all action shots for the *Franciscan* and *Gater*.

## The Alumni Association

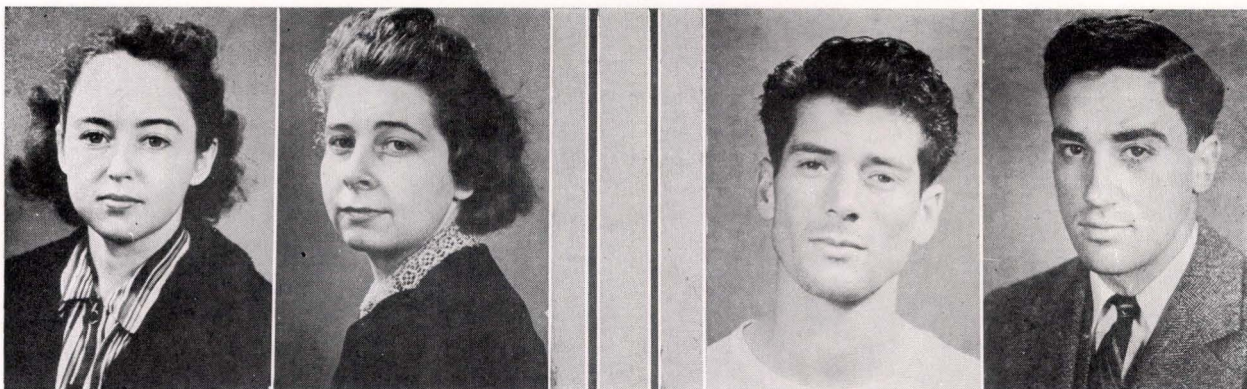
It was in 1932 that the first male students registered at the college, and it took over eight years of male prominence in undergraduate affairs before an *alumnus* could win out over an *alumna* and become president of the San Francisco State Alumni Association.

That step from being an Alumnae Association to an Alumni Association marked the beginning of a new regime among the graduates of the college. Interest in undergraduate sports and other activities strengthened, with the association under the newly elected president, Ted Goldman (*see Football*), sponsoring Homecoming Day, presenting a trophy for the winner of the Chico football game, holding the first annual Alumni-Varsity track meet, followed the next week by a doubleheader baseball game.

May 11 marked the tenth year of Coach Dave Cox's reign over State athletic and the Alumni dinner given in his honor. Officers of the Association present were: Vice-President Dorothy Hart, Executive Secretary Violet Wenk, Financial Secretary Kay Butler, Treasurer Sally Wilde, *Alumnus* (monthly Association magazine) editors Ed Pierce, Harold Martin, Adviser P. F. Valentine.



TED GOLDMAN  
*First to make a touchdown.*



*A.W.S. President Soulte, Vice President Iva Beth Cain; A.M.S. President Machi, Secretary Jim King.*

## Associated Women

The largest single organization on the campus, the Associated Women's Club presents a series of teas and parties throughout each year for all the women of the college.

The last year under President Marguerite Soult was no exception, and teas were held frequently in the Activities Room, Hallowe'en and Christmas parties were given, and the A.W.S. entered the Chicken's Ball, co-sponsored the Frosh Reception.

## Associated Men

Bi-weekly meetings, complete with beans, hot dogs, and entertainment, and the A.M.S.-sponsored Sportnite in January marked the progress of another school year for the Associated Men Students.

Under President Mario Machi, the A.M.S. provided an hour of relaxation and food every other week for the men of the college, participated in the Chicken's Ball, was co-sponsor of the semi-annual Freshman Reception with the Associated Women.



*Faculty members, student officers welcome frosh.*



*Yell-leaders Bee Cleary, Bill Abbey, Lillian Kaplan practice a few gyrations before a rally in the Bowl.*

## The Yell Kings

It was not long ago that State rooters attending athletic contests were greeted by the incongruous sight of no less than five yell-leaders (three male, two female) prancing through yell-enticing gymnastics before an assembled body of only several hundred students in a grandstand less than eighty feet long.

To protect the student body from the paradox of yell-leaders that would be able to outshout the entire rooting section, the new Constitution of the Associated Students provides for only three yell-leaders (two female, one male).

From the playing field, through professional baseball and ineligibility for further amateur sports came Bill Abbey, former Golden Tide baseball and football great, to take over the reins as head yell-leader. Advertising the Abbey Abyss as containing the most powerful lungs on the campus, Abbey won the honor of wearing Student Body purchased white flannels, conducting rallies, appointing Bee Cleary and Lillian Kaplan as assistants.

## Rally Talent Parade

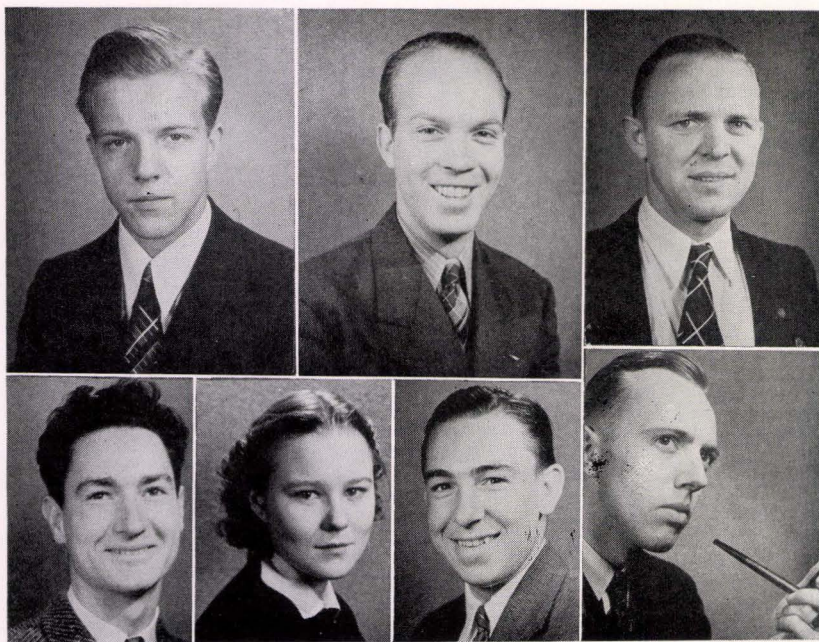
Although football rallies were few and far between last fall, the rest of State's year saw no sparsity of student body pep meetings. Outstanding among all rallies of the year were two—the On-To-Denver rally sending off the basketball varsity to participate in the National A.A.U. finals; the Ground-Breaking, Jaysee game rally held on the new campus site in conjunction with the S.F.J.C. student body. Other rallies held on the campus by Yell-King Abbey featured a bevy of local talent, several visitors, selections by the band, A Cappella, State singers, dancers. Rallies were held for basketball, football, special occasions, and for purely entertainment reasons. The new Rally Bowl was filled to capacity at each meet, the adjoining lawns and walks carrying the overflow crowd.



*"Off to Denver" draws crowds.*



*Student  
Body Activities*



*Powers behind the press—Gater editors.*

## Editors

- EDITOR-IN-CHIEF  
Ed Pierce . . . . . Fall  
Ed Smith . . . . . Spring
- MANAGING EDITORS  
Wilma Hill  
Bob Buckley  
Fred Bender  
Ed Smith
- BUSINESS MANAGER  
Jim Martin
- ADVERTISING MANAGER  
Douglas B. MacMullen . . . . . Fall  
Ed Tankersley . . . . . Spring
- COPY EDITORS  
Dorothy Taliaferro  
Betty Zehnder
- SPORTS EDITORS  
Ed Poole  
Fred Bender  
Ernie Bicknell  
Bob Buckley
- FEATURE EDITORS  
Jo Ashlock  
Sherman Grant

# Golden



# Gater

For years the Golden Gater struggled along, apparently aimlessly, sometimes criticized by the faculty, sometimes by the students—always poorly accepted by its readers. With several innovations of policy, make-up, and organization, the Gater finally reached the top of a two-year upswing in the spring of this year, to be acclaimed by faculty and students alike as an outstanding piece of collegiate journalism.

Started by Editor Ed Pierce in the fall, the innovations included freer make-up, better display of featured stories, and guest columns by faculty members on current affairs. Under the leadership of Editor Ed Smith in the spring, the Gater instituted a revamped feature page, a new system of distribution.



*Minor editors, columnists.*

- EDITORS WITHOUT PICTURES

BETTY DAVIS  
SHERMAN GRANT  
WADE BRUMMAL  
DENA WITTE

- PRINTER

ALBERT K. ANDERSON

- ENGRAVER

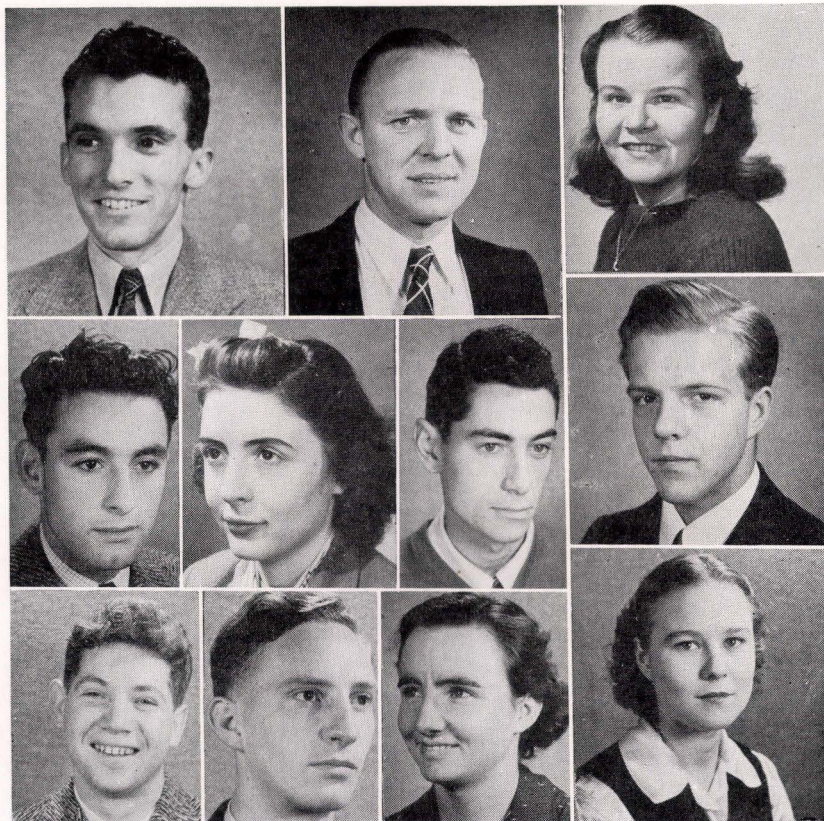
RICHARD E. BENSON

- PHOTOGRAPHERS

WALTER CAMERON  
HAROLD MARTIN

- AD MANAGER

ED TANKERSLEY



# The 1940 Franciscan

- EDITOR-IN-CHIEF

ERNEST MIGUEL

- ASSO. EDITORS

WILMA F. HILL  
ED PIERCE  
MARGARET SULLIVAN

- ILLUSTRATOR

STEVE MILLS

Working on a limited budget, the staff of this Franciscan pulled out of a long struggle to produce a book with new departments, new methods of presentation.

The color illustrations serving as division pages are new to the Franciscan, as are the honorary fraternity portrait division and the sections devoted to honoring several graduates with special commendation for services rendered the college in their undergraduate years.

A special method of lamination over the cover illustration is another new feature adopted by the staff for the year.

- BUS. MANAGER

JAMES F. MARTIN

- ASST. EDITORS

JOHN PICHOTTO  
JACK HULBERT  
WADE BRUMMAL  
BETTY ZEHNDER  
LOUISE VALLARINO  
ALEX EDELSTEIN



*Members of the Board keep an eye on the Gater staff (above), the Franciscan staff (below).*

# Board of Publications

## MEMBERS

ALEX EDELSTEIN  
Director

•

LOUISE VALLARINO  
F. Secretary

•

EDWIN POOLE  
S. Secretary

Assuming more direct control over the Golden Gater than it had ever had before, the Board of Publications was instrumental in bringing about numerous changes in policy, staffs, and distribution of the paper.

The controlling body over all campus publications, Director Alex Edelstein's board this year sponsored two receptions for staff members, two publications dinners, appointed editors, approved contracts, supervised all activities of publications.

Following new provisions in the student body Constitution, Director Edelstein was elected by the student body, appointed his own board with Executive Board approval.

## MEMBERS

LEWIS MORRIS

•

FRED BENDER

•

BOB BUCKLEY

•

ED SMITH



Varsity debate squad visits Stockton tourney, sponsors contest.

# Forensic Activity

"You go on up there and bring home the bacon!" they warned the delegation of fifteen debaters who were trekking to Stockton to participate in the Pacific Coast Debate Championships, and State's forensic prestige was heightened when the women's team of Vivian Fleming and Shirlie Senk took second place in the women's championships, and the men's teams all advanced to the semi-finals.

It was the first time in State history that a team reached the finals of a contest against such first-rate opponents as U.S.C., College of Pacific, Stanford, California, and other top-ranking colleges, and it was a fitting climax to a season abundant with victories, moral and actual, over competition of legislative argumentative ability. (*See strife*).

## DEBATERS

•  
VIVIAN FLEMING

•  
HENRY BARTELS

•  
BOB SIGERSON

•  
MARCUS DAVIS

•  
SHERRY AUERBACH

## DEBATERS

•  
SHIRLIE SENK

•  
WARREN THORNTON

•  
ERWIN BISCHOFF

•  
ARNOLD VEZZANI

•  
RUDY KOLLER

## THE CAST

### • MURRAY HILL

Wallace Twitchell  
Dorothy FitzPatrick  
Louise Winter  
Jeanne Kerwin  
Hallock Wagner  
George Archambeault  
Herb Smith

### • SHE STOOPS TO CONQUER

Bernice Bianchi  
Hypatia Scordelis  
Charles Maurer  
Ray Hutchinson  
Stephanie Singer  
Herb Smith (Director)

### • TOVARICH

Walter Dunne  
Dorothea Eskesen  
Ed Tankersley  
Bob Sigerson  
Lillian Kaplan  
Carl Nichols  
Athene Abramopolous  
Phillip Wallace  
George Fenneman



*Thespians stoop to conquer, portray the Tweedles.*

# College Theatre



JESSIE CASEBOLT  
*College Theater Director*

Although well over 300 miles separates them, the spirit between San Francisco State and Humboldt State is so keen that each year the schools send delegates to participate in the semi-annual Play Festival.

Fall, 1939, saw Humboldt State traveling to San Francisco and Treasure Island to present "Our Town" in conjunction with College Theater's production, "Murray Hill."

"Murray Hill," acclaimed by Fair authorities as an excellent production, dealt with the trials and tribulations of the Tweedles sisters and their young charge.

Spring saw the students in College Theater presenting a student-directed production, "She Stoops to Conquer," with Herb Smith directing, and "Tovarich," drama of old Russia.

Miss Jessie Casebolt is director of College Theater, and all productions are created through the assistance of the Drama Council.





*Bob Anderson reaches down under the counter for some unknown to give "kick" to the cokes—it did!*

## Cal Poly Excursion

Long to be remembered among the annals of State's annual football excursions is the trek to San Luis Obispo and Cal Poly undertaken by 350 of the student body last football season.

Led by the intrepid explorer, James Fitzgerald, the rooters entrained early one morning in San Francisco, traveled behind the streamliner down the coast to San Luis in their special eight-car train, feasted, fiested, danced, dined, watched the Golden Tide dash ineffectively against the weak Mustang eleven, come out in a scoreless tie.

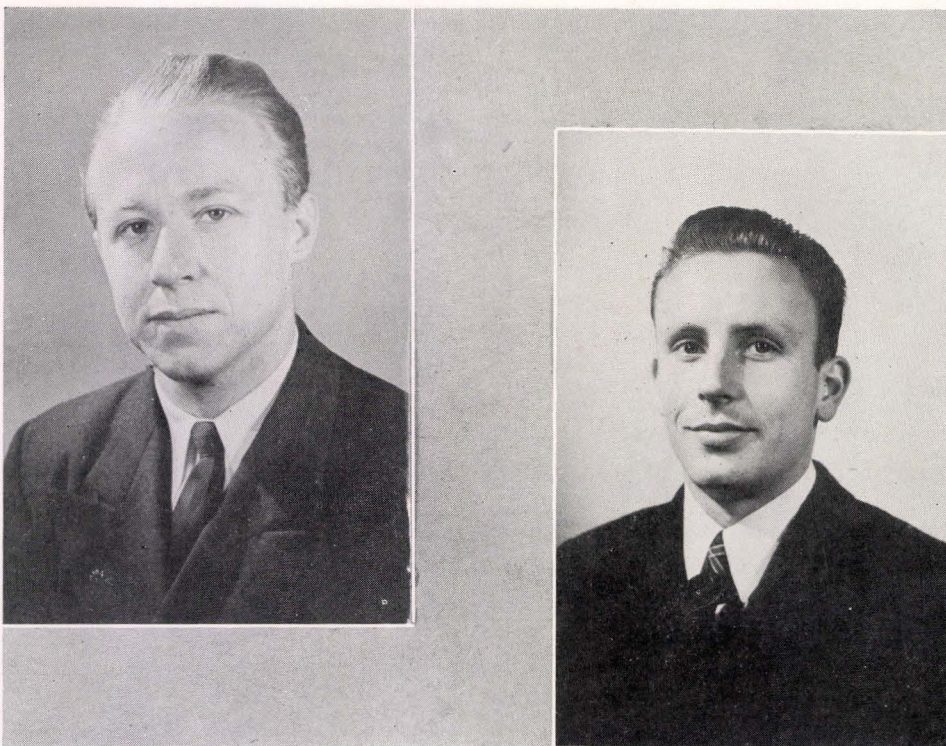
The rooters entrained for home at 12 sharp, played, slept, danced on the 8½-hour trip back to San Francisco.

Never to be forgotten are the scenes of Coaches Boyle and Kupfer chasing recalcitrant football players into their own car for sleep, and the subsequent escape of many to return to their girl friends.



**SULLIVAN-MELLER**  
*Some players escaped.*

● *Music*



*Music Fed President Doug Kidd, Treasurer Earl Saxton*

# Music Federation

Outside of the Associated Student Body itself, no campus organization has had as much responsibility as the Music Federation. The organization is the student legislative group of the largest single department of the college.

Having multiplied its original membership tenfold, the federation now boasts four hundred members. It has been the counterbalancing agent for a tremendous influx of new music students, greater in proportion than the increase in total student body membership. More than once has it outgrown its original constitution and by-laws, but has not suffered a lag such as is characteristic of outmoded institutions. It has amended, altered, interpreted to fit.

The past year of federation history has been one of accomplishment. Long before classes for the fall semester had begun, members were running through the city's clothing district making negotiations for the biggest "deal" in Fed annals—the purchase of sixty-five resplendent

new uniforms for the pep band. Without the generous help of the student body executive board, such a purchase would have been impossible.

The Music Federation's first venture into the field of producing was the "Showboat" party held in October. The entire lower annex was converted into the promenade deck of a Mississippi river showboat, with the rehearsal hall as the ballroom and the college theatre as the main salon, wherein seven acts of vaudeville, featuring federation talent and guest artists, held sway.

Greatest honor ever bestowed upon the federation was the invitation to send a group of sixty singers and musicians to Los Angeles on March 31 to perform at the opening session of the National Music Teachers' conference. The group acquitted itself in noble manner, not in the least hurting the prestige of San Francisco State college.



A CAPELLA CHOIR  
*Transcontinental, concert successes.*

## A Capella

Destiny had her big loom already set to weave strange patterns that fragrant spring morning six years ago when the A Cappella choir met for the first time. The new group was destined to become the most prominent, farthest-reaching student organization on the campus.

Evidence of the choir's success as a harbinger of San Francisco State college publicity to the nation was the multitude of letters which poured into the local headquarters of the Mutual Broadcasting system after each broadcast of the series in which the choir had participated from Treasure Island during the Fair's first year. The group is already scheduled to broadcast in this second year of the Exposition.

Outstanding among the choir's concerts was the one in which the group joined the college band in a combined program of classical and modern music last April 16.

The man most responsible for the success of the A Cappella choir is Mr. Roy A. Freeburg (*see page 6*), whose fine qualities of musicianship and showmanship have been a constant inspiration to the group.

## College Chorus

Organized as a campus musical activity in 1931, the College Chorus has grown during the past nine years until it has now reached the height of being the largest single activity group on the campus.

Begun as the College Chorus in 1931 by Mary McAuley and Musichead William Knuth, the organization was taken over in 1933 by Irene Nicoll, renamed Choral Training; changed hands again in 1936 when Raymond L. White took over the directorship under the old name; and the college's musical orphan, tried and discarded by practically every music teacher, grew gradually into a thriving adult in the three years it has been under the co-directorship of Knuth and White.

With seeds for the Annual Oratorio Chorus sown in 1937, the Christmas Oratorio has developed into the major activity of the college chorus each year.

Playing before a packed house at the First Congregational and Methodist Church, the Chorus last year introduced a new composition by its mentor, sang Mr. White's *Veni Emmanuel*.



COLLEGE CHORUS  
*Mr. White's "Veni Emmanuel"*



TREBLE CLEF  
*Outstanding women's choir.*

## TREBLE CLEF

"Infant organization," and "Outgrowth," they called the Treble Clef when they were first organized in 1938, but this cast-off part of the A Capella has since grown into one of the most exclusive choral organizations on the campus, has gained both local and off-campus laurels as being an excellent group of voices, excellently directed.

Women members of Treble Clef are chosen by a musical test given each year, and the choral society presents concerts throughout the year.

Directed by Musichead Knuth, this 36 voice organization presented several concerts during the year, was acclaimed as one of the best women's singing groups in the Bay Area.

## MADRIGALS

Most distinctive concert of the last college year was held on November 17. The program was a benefit, presented by the noteworthy dance group, Kappa Delta Tau, in conjunction with the Madrigal Singers, most specialized musical group on the campus.

The Madrigal Singers is among the first of the musical groups to be organized at the college. From its inception in 1931, the group has been a leader all the way.

Choral music of the fifteenth and sixteenth centuries comprises most of the repertoire of the Madrigal Singers. Often it is accompanied by traditional instruments, such as the clavi-chord, spinet, virginal, recorders, lutes.

Miss Eileen McCall, the group's director, has been the heart and soul of the Madrigal Singers. It was she who first taught the difficult style of music to the Madrigalists, and it was she who lent her own charm to the interpretation of this music.



MADRIGALS  
*Shades of Fifteenth Century.*



*The College Band (above), the College Orchestra (below).*

## Student Concerts

Prestige—the college band has sought it and has obtained it. The lowly band—the type of musical organization spurned in the “nicer” circles of symphonic music—has seen itself raised to the heights of artistic achievement in the work of the band of San Francisco State college.

M. Karl Ernst, young, ambitious, far-seeing, has fought for perfection in the college band. He wanted to give basis to an ideal he has always cherished—the ideal that a musical organization without the benefit of stringed instruments can merit the respect that has here-

tofore been bestowed exclusively upon symphonic and chamber music organizations.

To hear the interpretation that the State College band has lent to the magnificent Bach G minor fugue has caused gasps of wonderment and envy to emanate from the lungs of other college musical organizations.

But aside from the aesthetic achievements of the band, there are its college spirit-stirring accomplishments on the football field and in the basketball game bleachers. Flashy, gaudy—utterly splendid in their new uniforms, the bandsters have done much to increase the true Alma Mater spirit at State.



# Student Concerts

Forty hands — simultaneously picking out identical harmonies on twenty pianos — marked the initial performance of Miss Eileen McCall's piano ensemble as one of the most singular performances by any student organization in the Music Department for the past year. Enlarged in one year from nine persons to over twenty, the ensemble preferred old-fashioned songs, semi-classical music.

By far the largest presentation made by the music department during the year was the Annual Oratorio and Concert given on December 8 by the College Chorus and orchestra. Featured was Mr. White's cantata, *Veni Emmanuel*, student soloists Harriet Smith and Tom Bennet. Blonde Miss Smith, towering over little Bennet by four inches in height, pleased listen-

ers with the richness and depth of her contralto voice, while Bennet, although nervous at times, excelled his previous baritone solos.

A series of concerts by the college band, held in Everett Auditorium, featured the trombone quartet of Bryant Figeroid, James Anderson, Leslie Hawk, Bill Watkins. Saint-Saens' *Tarantelle* was played to the accompaniment of R. L. White, by David Colvig, Earl Smith.

Far-flung was the fame of State when the A Capella appeared on several international broadcasts over Mutual network from Treasure Island, and when State's choir traveled to Los Angeles in the spring, accompanied by the orchestra, and the strains of the State hymn once again were heard over the entire country, carried this time by N.B.C.

# ● *Classes*







● *Seniors*



# 1940 SENIORS



## ● HONOR COPY TO

BOB SMITH . . . the unknown among this Franciscan's honor students . . . quiet, unassuming, obscure in politics . . . a credit to the college with exceptional scholastic and social abilities . . . rugged, hard-working student who worked up from the bottom . . . had little time for clubs . . . yet his personality and friendliness is expressive of the spirit of the college . . . the typical State student.

• **PRIMO M. ABANTAO**

*Philippines May*

Liberal Arts; Librarian, International Relations Club. Transfer from San Mateo J.C.

• **MARY ISABELLE AVILA**

*Fort Bragg May*

Elementary; Newman; Brush'n Palette. Transfer from San Jose State.

• **RUTH ELLEN BARNETT**

*San Francisco May*

Elementary; Phi Lambda Chi; Alpha Chi Epsilon vice-president; A.W.S. Treasurer; Advisory Council; transfer from Marin J.C.

• **MARJORIE J. ACKERMAN**

*San Francisco July*

Elementary; Bib'n Tucker. Transfer from Occidental College.

• **RHODA JANE AYRES**

*Berkeley May*

Kn'g Primary; Bib'n Tucker; Treasurer Alpha Chi Epsilon; Scribes; Advisory Council C. S. T. A.

• **PHYLLIS J. BARRY**

*San Francisco January*

Elementary; Advisory Council; Brush'n Palette; Open Road.

• **OLGA PAULA ALMAZOFF**

*Sacramento January*

Kindergarten-Primary; International Relations; Little Theater; Open Road; Transfer from Sacramento J.C.

• **F. LESLIE BAILEY**

*San Francisco May*

Liberal Arts; Westminister; Track, J. V. Transfer from S. F. J. C.

• **RUTH MARGARET BECK**

*Oakland May*

Elementary; Newman Club; Kappa Delta Tau.

• **GEORGE B. ALVES JR.**

*Oakland May*

General Elementary, Junior High, Special Music; Vice-President, treasurer, president, Alpha Mu Gamma; Orchestra; String Quartet.

• **DOROTHY BAREILLES**

*San Francisco May*

Elementary and Jr. Hi; Phi Lambda Chi; W.A.A. Open Road; Secretary, Advisory Council; C.S.T.A.

• **GEORGE ARCHAMBEAULT**

*Modesto May*

Special Music, Elementary; Sigma Alpha Eta; Newman Club; College Theater; A Capella; Music Federation; Band; Transfer from Modesto J.C.

• **ETHEL GLADYS BARNETT**

*Alameda January*

Liberal Arts; Alpha Chi Epsilon; Phi Lambda Chi. Transfer from U. C.

• **RICHARD W. BEST**

*San Anselmo May*

Liberal Arts; President, Westminister; Brush'n Palette; Los Lozarillos; C.S.T.A. College Chorus.

• **EDNA M. BICKERDIKE**

*San Francisco May*

Elementary; Advisory Council; Open Road; Sec-Treas., Student Agatheans.

• **NELSON E. BONAR**

*Santa Rosa May*

Special Music, Junior High; Music Federation president; A Capella; Band; Philharmonic; Piano Ensemble; Orchestra; Federation Executive Board; Transfer from Santa Rosa J.C.

• **DOROTHY K. BRAND**

*San Francisco May*

Elementary; Brush'n Palette; Music Federation; C.S.T.A.; A Capella; Transfer from S.F.J.C.

• **BEVERLY MARIE BRENNAN**

*San Francisco May*

Elementary; Newman; Advisory Council; C.S.T.A.

• **ERWIN WALTER BISCHOFF**

*Oakland January*

Liberal Arts; President, Alpha Phi Gamma, Delta Sigma; Managing Editor, Gater; Chairman, Chicken's Ball; Debating '34, '35, '36, '39; Fencing '39; Chairman High School Forensic Tournament.

• **CHRISTINE BOAZ**

*Franklin, Tenn. May*

Elementary; Music Federation. Transfer from University of Tennessee.

• **MARY E. BOWERS**

*San Francisco May*

Liberal Arts; Secretary, Newman.

• **VIRGINIA C. BRANDLEIN**

*San Francisco May*

Elementary; Phi Lambda Chi; Brush'n Palette, Kappa Delta Tau; C.S.T.A.; Advisory Council; Westminister.

• **ROBERT Q. BUICKEROOD**

*San Francisco July*

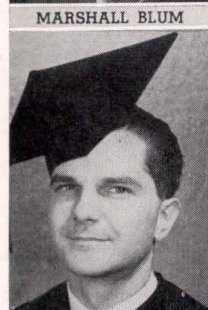
Elementary.



EDNA BICKERDIKE



MARSHALL BLUM



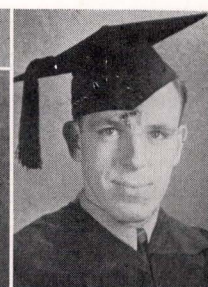
NELSON BONAR



DOROTHY BRAND



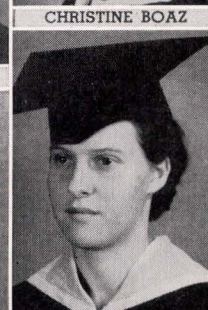
BEVERLY BRENNAN



ERWIN BISCHOFF



CHRISTINE BOAZ



MARY BOWERS



VIRGINIA BRANDLEIN



BOB BUICKEROOD



# 1940 SENIORS



## ● HONOR COPY TO

LOUISE VALLARINO . . . 'Weegie' to friends . . . president Alpha Phi Gamma . . . editor, managing editor, Gater . . . associate editor three Franciscans . . . a capella . . . editor Handbook . . . student representative . . . feminine athlete . . . belies 'school teacher appearance' . . . this beautiful miss leaves a string of accomplishments and benefits to the student body unequalled by any . . . it will be many years before another such versatile woman student will grace these pages.

● **SARITA CANEDO**

*San Francisco* *May*  
Elementary; President Alpha Mu Gamma, Los Lazarillos; College Theater; Advisory Council; French Club.

● **MARIE L. CIVITELLO**

*Sacramento* *May*  
Elementary; Delta Sigma Nu; Brush'n Palette; Newman; C.S.T.A. Hostess; S.S. '39. Transfer from Sacramento J.C.

● **BETTY CREON**

*San Francisco* *May*  
Special P.E., Elem. Treasurer W.A.A.; Hockey Manager; Advisory Club; P.E. Club; Registration chairman.

● **JEAN B. CHAPMAN**

*Oakland* *May*  
Elementary, Jr. High; Advisory Council.

● **ROBERT H. COCHRANE**

*San Bruno* *January*  
Junior High, Special Secondary in Music; Music Federation; Track. Transfer from S.M.J.C.

● **CAROL CROUCH**

*Stockton* *January*  
Elementary; President News Guild; Gater; Franciscan.

● **EMILY J. CHRISTENSEN**

*Oakland* *July*  
Elementary; President, Student Agatheans; C.S.T.A.

● **ELLARD F. COOK**

*Burlingame* *May*  
Elementary; President Art Federation; Brush'n Palette; Agatheans; transfer from S.M. J.C.

● **VIRGINIA ANN CULLEN**

*Daly City* *January*  
Elementary; Newman Secretary; C.S.T.A.; Registration Committee.

● **LILYAN K. CINCOTTA**

*San Francisco* *May*  
Kindergarten-Primary; Newman; Kappa Delta Tau; Italian.

● **JEAN B. COPLESTONE**

*Berkeley* *May*  
Liberal Arts; Alpha Phi Gamma; Editor, Gater; Editor, Handbook; Bib'n Tucker; transfer from Santa Rosa J.C.

● **MARIA DEHE**

*San Francisco* *May*  
Kindergarten-Primary; Treasurer Delta Phi Upsilon; A Capella; Advisory Council. Transfer from U.C.

● **ADELINE L. CIVITELLO**

*Sacramento* *May*  
Junior High, Special Secondary in Music; Delta Sigma Nu; Newman; C.S.T.A., Music Fed. Transfer from Sacramento J. C.

● **INA CORRIGAN**

*Richmond* *May*  
Elementary; Newman.

● **PEARL D. DONDERO**

*Oakland* *May*  
Elementary; Advisory Council; President Delta Sigma Nu; Registration Committee.

● **CAROLYN DOUGLASS**

*San Francisco* *May*  
Liberal Arts; Student Agatheans; Brush'n Palette; Madrigals.

● **THEODOR ESCHWIG**

*Selma, Calif.* *May*  
Liberal Arts; Badminton Club. Transfer from C.O.P.

● **DOLORES FERRARI**

*Burlingame* *May*  
K.P., Elementary; Alpha Chi Epsilon; Delta Sigma Nu; Vice-president of Bib'n Tucker, and Senior Class; Newman Club; College Chorus.

● **BEATRICE H. FRAZEE**

*Berkeley* *May*  
Elementary; Phi Lambda Chi; Advisory Council; W.A.A.

● **MURIEL M. FROELICH**

*Santa Rosa* *January*  
General Elementary; Transfer from Santa Rosa Junior College.

● **LEONARD J. DUCKWORTH**

*Oakland* *May*  
Liberal Arts; Captain-coach fencing team. Instructor for W.A.A.

● **WOODROW ESCHWIG**

*Selma, Calif.* *May*  
Liberal Arts; Transfer from College of Pacific.

● **ALYCE M. FRATESSA**

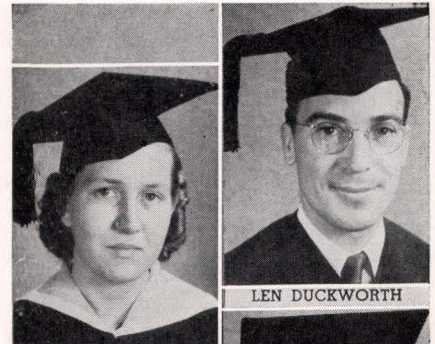
*San Francisco* *May*  
K.P., Elementary; Delta Sigma Nu; Bib'n Tucker; Alpha Chi Epsilon; Secretary Senior Class.

● **LILLIAN FREED**

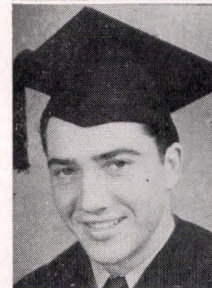
*San Francisco* *May*  
Elementary, Junior High; Chairman Registration Committee, 1939 Summer Session.

● **GUIDO D. FUMAGALLI**

*San Francisco* *May*  
Elementary, Junior High; Sigma Alpha Eta; President, Newman Club; Jayvee football; Registration Chairman.



CAROLYN DOUGLASS



THEODORE ESCHWIG



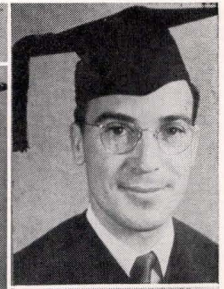
DOLORES FERRARI



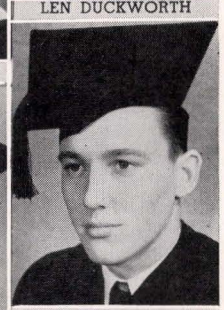
BETTY FRAZEE



MURIEL FROELICH



LEN DUCKWORTH



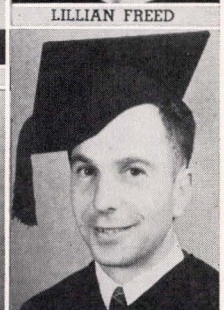
WOODROW ESCHWIG



ALICE FRATESSA



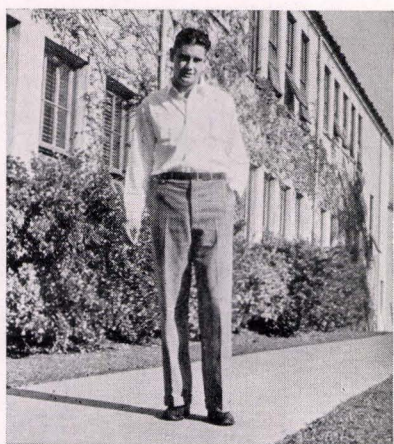
LILLIAN FREED



GUIDO FUMIGALLI



# 1940 SENIORS



## ● HONOR COPY TO

RU STONE . . . greatest all-around athlete in State history . . . won blocks in basketball, football, track . . . his record in track (199 points in one season) will always stand as symbolic of the greatest in State athletics . . . winner of Alpha Phi Gamma athletic awards . . . student body sign painter, college night-watchman, student executive, Ru will be remembered as a college institution.

● **HAROLD W. GARDEN**

*San Francisco May*

Elementary; Block S President; C.S.T.A. Treasurer; Track; Football; Baseball; Student Body Athletic Manager; Coach Jayvee Basketball.

● **CLAUDE E. HANRAHAN**

*San Francisco May*

Special P.E.; Block S; Secretary, A.M.S.; Phi Epsilon Mu vice-president and treasurer; Football; transfer from U.S.F.

● **MERODINE RUTH HILL**

*Fortuna, Calif. May*

Elementary; W.A.A.; Westminster; Phi Lambda Chi; Delta Sigma Nu.

● **ANDREW GAVRON**

*San Francisco May*

Elementary Junior High; Newman Club; Baseball '36, '37, '38; Block S; College Theater.

● **PHYLLIS MAY HANSEN**

*San Francisco May*

Elementary; Junior Class vice-president; Advisory Council; Bib'n Tucker; Registration Committee.

● **KATHERINE A. GJERDRUM**

*San Mateo January*

General Elementary; Newman; Los Lazarillos; C.S.T.A.; Brush'n Palette; Transfer from San Mateo J.C.

● **MARGARET S. HAWORTH**

*Portland, Oregon May*

Elementary; Kappa Delta Pi; Transfer from Oregon Normal.

● **BER-JE HONG**

*San Francisco May*

Liberal Arts; Chinese Students Club.

● **MARJORIE ELLEN GRAHAM**

*San Francisco January*

General Elementary; International Relations president; Westminster Club.

● **FRANCES HENLEY**

*Santa Rosa January*

Elementary; Phi Lambda Chi; Secretary Westminster Club; Transfer from Santa Rosa J.C.

● **ADELE STANLEY HOPPER**

*San Francisco May*

Elementary Junior High; Advisory Council; Chairman Frosh Reception; President, Phi Lambda Chi; Bib'n Tucker.

● **PEARL A. HAAS**

*Upland, Calif. May*

Elementary; Kappa Delta Tau; Agatheans; transfer from Beaulah College.

● **BETTY JANE HENRY**

*San Francisco May*

Liberal Arts; Bib'n Tucker; Advisory Council; Secretary French Club.

● **JACK W. HULBERT**

*Oakland May*

Elementary Junior High; Sigma Alpha Eta treasurer; Block S; Tennis Manager; Business Manager Golden Gate; Franciscan '39; Student Body Editor, '40 Franciscan; C.S.T.A.; Chess Club; Sophomore Treasurer.

● **MARION GLADYS HUNT**

*Elk Grove, Calif. July*

Elementary; Open Road Club; Advisory Council; Chorus.

● **CHARLES MICHAEL IAGO**

*South San Francisco May*

Special P.E., Junior High; Newman Vice-President; A.M.S. Vice-President; Block S President; Phi Epsilon Mu; Football; Baseball; Basketball; Soccer; Vice-President Senior Class.

● **ZETTA CARRIE JAMESON**

*San Francisco May*

Elementary; Graduate of U.C.

● **VIRGINIA M. JENSEN**

*San Francisco May*

Elementary; Westminster Club; Advisory Council.

● **LOIS SHIELDS KAISER**

*Vallejo May*

Kindergarten-Primary; Secretary Phi Lambda Chi; Delta Phi Upsilon; Alpha Chi Epsilon; C.S.T.A.; Advisory Council.

● **LAURETTA C. HUSSAR**

*South San Francisco May*

Kindergarten-Primary; Transfer from San Mateo J.C.

● **HOMER A. IRWIN**

*Berkeley May*

Special P.E.; Block S; Football; transfer from U.C.

● **VIRGINIA H. JENNINGS**

*San Francisco May*

Elementary Junior High; Advisory Council; Westminster Club.

● **EMMA E. JOHNSON**

*San Francisco May*

Kindergarten-Primary; Open Road.

● **MIYO KAMIYA**

*Berkeley January*

Kindergarten-Primary; A.W.S.



LORETTA HUSSAR

MARION HUNT

HOMER IRWIN

CHARLES IAGO

VIRGINIA JENNINGS

ZETTA JAMESON

EMMA JOHNSON

VIRGINIA JENSEN

MIYO KAMIYA

LOIS KAISER



# 1940 SENIORS

## ● HONOR COPY TO

CHILI SHELLEY . . . formerly C. Shelekov . . . old-guard student . . . student body card designer since 1934 . . . football manager, crew coach, football player . . . director of intramural . . . artist with unusual abilities . . . power behind the throne in student affairs for five years . . . another college institution that will be missed by all.

● **ROBERT KELNHOFER**

*San Francisco* *July*  
Special P.E.; Phi Epsilon Mu;  
Block S; Football varsity;  
Track.

● **LOIS LAMBA**

*San Francisco* *May*  
Liberal Arts; transfer from  
Oregon, U.C.

● **FLORENCE BETH LEWIS**

*San Francisco* *May*  
Elementary; Sec'ty, Vice-Pres-  
ident, Brush 'n Palette; Sec'ty  
Advisory Council; College  
Theater.

● **DOUGLAS HART KIDD**

*Oakland* *July*  
Special Music, Jr. High; Pres.,  
A Capella; Treasurer, Music  
Fed.; President, Music Fed.;  
Vice-President, Sigma Alpha  
Eta; Budget Committee; Co-  
winner, Chickens Ball, '36.

● **EDNA LANCASTER**

*Oakland* *May*  
Liberal Arts.

● **RELFE W. LEAVITT**

*Oakland* *May*  
Special P.E., Jr. High; Block  
S; Track, 4 yrs.; C.S.T.A.;  
Basketball.

● **EVELYN R. KIESSLING**

*Oakland* *May*  
Elementary Junior High;  
Advisory Council; Kappa  
Delta Pi; Registration Com-  
mittee.

● **KATHLEEN LANDREVILLE**

*San Francisco* *May*  
Elementary, Junior High,  
Special P. E.; Vice-President,  
A.W.S.; Secretary, A.W.S.,  
Junior Class; Bib'n Tucker;  
P.E. Club; Newman.

● **MAMIE M. LIM**

*San Francisco* *January*  
Liberal Arts.

● **FREDERICK W. KLINE**

*San Francisco* *May*  
Elementary Junior High;  
Kappa Delta Pi; Student  
Body Treasurer; Junior Class  
Treasurer; Business Manager,  
Summer Gater; Block S; Var-  
sity track; Sigma Alpha Eta;  
Music Federation.

● **IRENE C. LARKIN**

*Grass Valley, Calif.* *May*  
Elementary; Newman; Delta  
Sigma Nu. Transfer from Sac-  
ramento J.C.

● **RONALD ROBERT LINDLOW**

*Oakland* *May*  
Elementary; Track; Basketball;  
Tennis; Block S; C.S.T.A.;  
Transfer from U.C.

● **MARCIA KUNEDT**

*San Francisco* *May*  
Elementary; Freshman Class  
Secretary.

● **BETTY LOUISE LARSON**

*Oakland* *May*  
Kindergarten-Primary; Phi  
Lambda Chi; Advisory Coun-  
cil; Westminister.

● **FREDDA L. MANNING**

*Mill Valley* *May*  
Elementary; Transfer from  
Colorado State Teachers.

● **LUCILLE ROSE MCCARTHY**

*San Francisco* *May*  
Elementary; C.S.T.A.; trans-  
fer from S.F.J.C.

● **ERNEST MIGUEL**

*Oakland* *May*  
Liberal Arts; Sports Editor,  
Managing Editor, Editor-in-  
Chief, Golden Gater; Sports  
Editor, Editor-in-Chief, Fran-  
ciscan; Assistant Editor, Edi-  
tor, Handbook; Bailiff, Sec'ty,  
President, Alpha Phi Gamma;  
Member Bd. of Publications,  
'37-'38; French Club '38;  
News Guild '38; Basketball  
Manager '37; Executive Bd.  
'39.

● **LEWIS F. MORRIS JR.**

*San Francisco* *January*  
Liberal Arts; President, Sen-  
ior Class; Junior Class treas-  
urer; Board of Publications  
(2 years); Chairman Soph  
Strut; Budget Committee; Ex-  
ecutive Board; Gater Staff;  
Chaser; Franciscan; Sigma Al-  
pha Eta Historian; Alpha Phi  
Gamma 1st & 2nd vice-pres-  
ident; News Guild; Italian  
Club; Ground Breaking.

● **BENTON MacMILLAN**

*San Francisco* *May*  
Elementary, Junior High;  
Soccer; President, treasurer,  
historian, Open Road Club;  
Chairman Little Theater; Host,  
S.S. '39.

● **MARY JEANETTE MARVIN**

*Willits, Calif.* *May*  
Elementary, K.P.; Vice-Pres-  
ident Madrigals and Delta Phi  
Upsilon; Student Agatheans.

● **CLARA E. McGEE**

*Berkeley* *May*  
Elementary; Newman; Ad-  
visory Council.

● **MELDA M. MOORE**

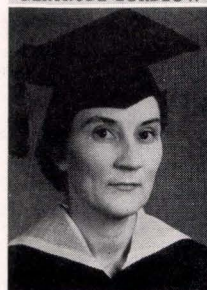
*San Francisco* *May*  
Elementary; Bib 'n Tucker;  
Sec'ty C.S.T.A.; Kappa Delta  
Pi; Advisory Council.



GERTRUDE LORDLOW



BENNY MACMILLAN



LOUISE MANNING



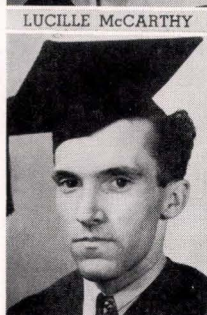
MARY MARVIN



LUCILLE MCCARTHY



CLARA McGEE



ERNIE MIGUEL



MELDA MOORE



LEWIS MORRIS



MARION MULHOLLAND



# 1940 SENIORS



## ● HONOR COPY TO

CHARLIE IAGO . . . baseball and football great . . . three years on Newman Club executive board . . . officer of Block S and A.M.S. . . . power in athletics and student affairs . . . pleasing personality . . . one of best-liked men on the campus since 1936.

**HELEN WELTHA NEWELL**

San Francisco January

Kindergarten-Primary; Chairman Student Body, Summer '39; President, Delta Phi Upsilon, C.S.T.A.; Vice-President Advisory Council; Alpha Chi Epsilon; Westminster; Campus Musical Shows.

**JUANITA PAGANO**

San Francisco May

Elementary; Advisory Council; Open Road; Kappa Delta Pi.

**CAROL ANGELL PIXLEY**

Corte Madera, Calif. May

Elementary; Phi Lambda Chi; Vice President Westminster; Delta Sigma Nu; Advisory Council.

**MAXINE K. NORMAN**

Denver, Colorado May

Elementary; Graduate of U. of Denver; W.A.A.

**OLIVE B. PATTERSON**

San Francisco May

Elementary; Kappa Delta Pi; Advisory Council; Chairman, AWS Thanksgiving.

**ROSE PERLMAN**

Richmond May

Elementary, Jr. High; President Delta Sigma Nu, French Club; Member Alpha Mu Gamma.

**BERNICE E. NUTLEY**

Hammonton, Calif. May

Elementary; Kappa Delta Pi; C.S.T.A.; Transfer from Yuba J.C.

**RUBY WATSON PATTERSON**

San Francisco July

Elementary; Science Club; Transfer from Wayne University, Detroit.

**RUTH RENDELLE PETERSON**

San Francisco May

Special Music; Westminster; A Capella; Transfer from Dakota Wesleyan.

**DOROTHY PERSON**

San Francisco May

Elementary, Jr. High; Secretary Kappa Delta Tau; Advisory Council.

**ELEANOR PLAS**

Martinez May

Special Music, Elementary; Phi Lambda Chi vice-pres.; Kappa Delta Tau; Music Federation secty. and vice-pres.

**VERNON A. OUELLETTE**

Vancouver, Canada May

Elementary; Yell Leader, '39; Assistant Yell Leader '36-'39; Treasurer, Senior Class; Phi Epsilon Mu; Block S.

**EDWARD F. PIERCE**

San Francisco January

Liberal Arts; Editor, Managing Editor Gater; Associate Editor '39, '40 Franciscans; Secretary Sigma Alpha Eta News Guild; Member Board of Publications '38-'39; Associate Editor, Chaser; Alpha Mu Gamma; Androsphinx; Transfer from Pomona.

**WILLIAM PLUTTE**

Oakland May

Special P.E.; Winner Alpha Phi Gamma Athletic Trophy '38; Co-Founder, Charter President Phi Epsilon Mu; Captain Basketball; Freshman Class President; Block S; 3 Years Football.

**SYLVIA POLISHOOK**

San Francisco May

Elementary; Music Fed.; Treble Clef; Orchestra.

**VICTOR A. RAMIREZ**

San Francisco May

Special Music, Elementary; Newman Treasurer; College Orchestra, Band, A Capella; Music Fed.

**NORMA CLARE RATTARO**

San Francisco May

Elementary; Registration Committee.

**BERNICE EDNA RESNICK**

San Francisco May

Elementary; Women's Debate Manager; Delta Sigma Vice President; AWS Senior Class Representative.

**ALAN A. POPES**

San Francisco July

Special Music, Junior High; Orchestra; Band; transfer from U.S.F.

**DOROTHY LOUISE RAMUS**

King City, Calif. May

Elementary; Advisory Council; Vice-president, treasurer, secretary, Alpha Mu Gamma.

**VIRGINIA S. REDDING**

Murphys, Calif. May

Elementary; Student Agathians; Advisory Council.

**BERTHA JANE RIISE**

Turlock May

Elementary, Jr. High; Advisory Council; Open Road; Scribes; Brush 'n Palette; Westminster; WAA.

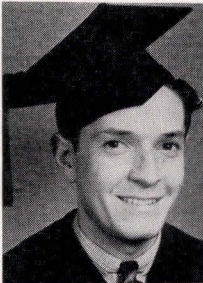
**BARBARA L. ROBINSON**

San Francisco May

Elementary; Delta Sigma Nu treasurer; Newman Club.



SYLVIA POLISHOOK



VICTOR RAMIREZ



NORMA RATTARO



BERNICE RESNICK



MILDRED RILEY



ALAN POPES



DOROTHY RAMUS



VIRGINIA REDDING



BERTHA RIISE



BARBARA ROBINSON



# 1940 SENIORS



## ● HONOR COPY TO

BOBBIE SANDEEN . . . twice president of W.A.A. . . . twice director of Play-Day . . . on college Ex. Board . . . outstanding women's athlete . . . winner Block S for women . . . displays exceptional executive ability as well as athletic . . . rates high in student popularity . . . director of W.A.A. and student body affairs for three years . . . a truly outstanding student.

• **ROBERT RALPH ROBINSON**

San Francisco May

Special P.E., Junior High; Football, '35-'36; Track; Golf; transfer from Cal Poly.

• **WALTER GLEN SCHWARTZ**

San Francisco May

Elementary; Vice-president C. S.T.A.; Kappa Delta Pi.

• **HARRIET ESTHER SMITH**

Oakland May

K.P., Elementary; Vice-president Madrigal Singers; Treasurer, K.P. Club; Westminster Club; Music Department Soloists, '39-'40.

• **SHIRLIE SENK**

San Francisco May

Liberal Arts; Alpha Phi Gamma; Varsity Debate; Delta Sigma; Phi Lambda Chi; Vice President, President of Class '36, '37.

• **JOAN BURKE SMITH**

San Francisco January

Elementary, K.P.; Treasurer, Bib 'n Tucker; Newman; Delta Sigma Nu; Alpha Chi Epsilon.

• **ROBERTA A. SANDEEN**

San Francisco May

Special P.E., Junior High; Director P.E. Club; President W.A.A. (3 years); Kappa Delta Pi.

• **MARYLILY SHAUGHNESSY**

Richmond May

Kindergarten-Primary, Elementary; Newman; Advisory Council; Alpha Chi Epsilon; Open Road; C.S.T.A.

• **MARGARET (PEGGY) SMITH**

Alameda May

Elementary, Jr. High; Women's Sports Editor, '40 Franciscan; Newman, P.E. Club; Vice President Student Body '39-'40; Student Body Representative, '39; WAA President, '38; Music Federation. Block, Block S pin winner.

• **JOEL SHIMMON**

Turlock May

Special Music, Elementary, Jr. High; A Capella; Music Federation.

• **ROBERT H. SMITH**

San Francisco May

Liberal Arts; Beta Pi Sigma; Transfer from Occidental College.

• **HYPATIA B. SCORDELIS**

San Francisco May

Elementary, Jr. High; Tennis; Drama; Frosh Hop Committee.

• **EDWIN D. SMITH**

San Francisco May

Elementary, Jr. High; President Senior Class, Freshman Class, AMS, Sigma Alpha Eta, News Guild, Fed. of Clubs; Editor-in-Chief, Managing Editor, Sports Editor, Golden Gater; Member Board of Publications; Jayvee Basketball, 4 yrs.; Manager Football, Basketball; Athletic Manager; Student Representative; Bailiff, Alpha Phi Gamma; Kappa Delta Pi; Phi Epsilon Mu.

• **ETHEL DOROTHY SOUTHAM**

Alameda May

Elementary; I.R.C.; Brush 'n Palette; Advisory Council; Westminster; C.S.T.A.; Treble Clef; Transfer from U. of Nevada.

• **FRANCES ALINE SARA**

Oakland May

Elementary; Phi Lambda Chi; Delta Sigma Nu; College Theater.

• **JEANNE M. SPAGNOLI**

Richmond May

Kindergarten-Primary; Alpha Mu Gamma; Phi Lambda Chi; Delta Sigma Nu; C.S.T.A.; Bib 'n Tucker; Advisory Council; Chairman AWS Party '38.

• **FUMIKO SUGIHARA**

Richmond January

Liberal Arts; Alpha Mu Gamma.

• **VIRGINIA STOLTE**

Mill Valley January

Elementary; Bib'n Tucker; Brush'n Palette; Gater; Sphinx Club; transfer from Marin J.C.

• **PATRICIA SULLIVAN**

San Francisco May

C.S.T.A.; Advisory Council; Newman Club.

• **JAMES ROBERT SWEENEY**

Yreka May

Liberal Arts; Student Body President; Junior Class President; Registration Committee; Debate Manager; Delta Sigma; Representative of College to State Legislature; Chairman of Assemblies, '38; Frosh Debate coach; finance committee; chairman external relations committee; Buildings Committee; Athletic Council; varsity debate.

• **EVVIE M. STADELMAN**

Oakland May

Special P.E., Elementary, Jr. High; Kappa Delta Tau; President WAA; P.E. Club; Phi Lambda Chi; Advisory Council; Student Body Secretary, '38-'39; President Kappa Delta Tau.

• **MARGUERITE L. SOULTE**

San Francisco May

Elementary; President, Associated Women; Phi Lambda Chi; Westminster; Advisory Council.

• **ADELE D. SUGUITAN**

Philippine Islands May

Liberal Arts; International Club; French Club; Transfer from S.F.J.C.

• **MARY G. SUTHERLAND**

Portland, Oregon May

Elementary; Brush 'n Palette Secretary; Los Lazarillos; C.S.T.A.; Transfer from St. Helen's Hall J.C. and Glendale J.C.



JEANNE SPAGNOLI



FUMIKO SUGIHARA



VIRGINIA STOLTE



PAT D. SULLIVAN



ROB SWEENEY



ADELA SUGIUTAN



MARGUERITE SOULTE



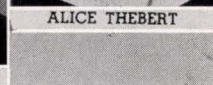
EVVIE STADELMAN



MARY SUTHERLAND



ALICE THERBERT





## ● HONOR COPY TO

HELEN NEWELL . . . energetic lass with executive ability . . . president of Delta Phi Upsilon . . . chairman student body, summer '39 . . . singer extraordinaire . . . prexy C.S.T.A. . . . B average for four years . . . a true credit to the college and the teaching profession.

● **MILDRED URSULA TOMASI**

*Petaluma January*

Elementary; Newman Club; Open Road; Transfer from Santa Rosa J.C.

● **AMANTE U. UDARBE**

*Camalanagan, P. I. May*

Liberal Arts; International Relations Club.

● **ARDIS ELIZABETH VASSAR**

*Ukiah May*

Elementary; Brush 'n Palette Vice President, '38; Westminster.

● **CATHERINE TRUE**

*San Francisco May*

Special P.E., Junior High; Vice-president W.A.A.; P.E. Club Director.

● **MARGARET ULVING**

*San Francisco May*

Liberal Arts; Sigma Rho Gamma Secretary.

● **EUGENE VDOVIN**

*Berkeley May*

Liberal Arts; Treasurer International Relations Club; President Alpha Mu Gamma; Jayvee, Varsity Track, '38-'39.

● **FRANCES TWOHIG**

*San Francisco January*

Elementary; Yell Leader, '38, '39; Beauty Prize Winner, '37; Kappa Delta Tau; Chicken's Ball.

● **MARIE T. VALLARINO**

*San Leandro May*

Special Music, Elementary; A Capella; Piano Ensemble; Secretary Music Federation (2 years); Newman Club; Assistant Editor, '39 Handbook; Registration Committee; Music Federation vice-president.

● **VIRGINIA WERUM**

*Oakland May*

Liberal Arts; Bib'n Tucker; P.E. Club; Kappa Delta Tau; W.A.A.

● **DENA DIANE WITTE**

*San Francisco May*

Kindergarten-Primary, Elementary; Secretary, Associated Students, '39-'40; Sec'ty, Jr. Class; Assistant Editor, '40 Franciscan.

● **CLAY FRANK YERBY**

*San Francisco January*

Liberal Arts; Transfer from San Francisco J.C.

● **C. BENJAMIN ZIEGLER**

*Pacific Grove, Calif. May*

Special Music, Junior High; A Capella; Band; Symphony; Music Federation.

● **MARION J. ZIMMERMAN**

*Seattle, Wash. May*

Elementary; Newman; Advisory Council; Open Road Club; Transfer from Seattle College.

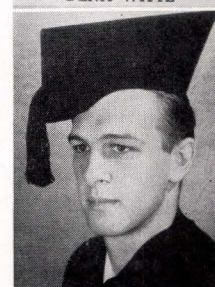
● **LaROMA ZUNDEL**

*Richmond May*

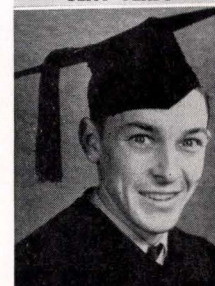
Elementary; Westminster; Treble Clef; Brush 'n Palette; Music Federation.



DENA WITTE



CLAY YERBY



BEN ZEIGLER



JOYCE ZIMMERMAN



LaROMA ZUNDEL



LEW MORRIS  
*Reluctant to leave*

## Senior Class

There is always one thrill that will long be remembered by any person who has once been a high junior, and that thrill is the step taken to seniority.. Here at State the step is marked by the high junior elections held semi-annually by the class for the election of Senior officers. By far the most coveted class offices on the campus are those of senior and frosh presidencies.

Ed Smith, president of the class of May '40, is the first Stater to ever gain possession of both of them in his term here at the college. Named as president of the Class of May, '39, upon his entrance to the college, Prexy Smith returned for more credentials, was named president of the Class of May '40 for his last year.

## Senior Activities

Lewis Morris, veteran printer of the Golden Gater, master-mind behind the financial end of the Chaser's first year, and campus power-behind-the-scenes for four years, was named senior president of the Class of January '40. The captain left stranded behind the ship, Prexy Morris graduated in May '40, reluctant to leave the Gater typesetting to a stranger.

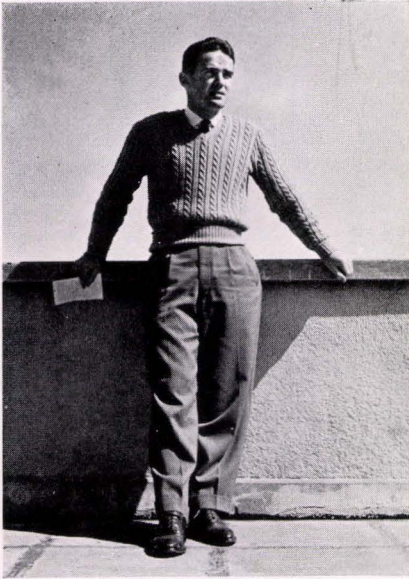
Goal of all frosh, as well as a forlorn hope for all undergrads, graduation in the Opera House will mark the end of college for the largest graduating class in State's history May 24, when Shirlie Senk will mount the rostrum as valedictorian. Senior Week, including the campus pilgrimage, the dinner, and the usual farewells, and the seniors leave for a new career, this to last longer than their collegiate six or seven years.



ED SMITH  
*Twice class president*

## ● *Undergraduates*

# Class of January '41



BOB ANDERSON  
*Junior class leader*

Big Game night represents two things to every State student—the climax of a frenzied week-end for all Bay Region citizens, the Annual Junior Prom of S. F. State. Under the guidance of President Bob Anderson, the Class of January '41 combined forces with the Class of May '41, presented the Prom in the St. Francis Hotel. The last big-time activity of a year full of class parties, picnics, dinners, the Prom found suitable success in the crowd attending, while dancers mingled on a crowded dance floor. Last activity of the year was the election of George Weeks new president, the running of President Anderson for Student Body president.

## •CLASS OFFICERS

BOB ANDERSON	President
GEORGE WEEKS	Vice President
DICK DATE	Treasurer
BONNIE EADEN	Secretary



*"See that, that's for the Prom!"*



*The Prom crowd hugs the floor edges*

## • CLASS OFFICERS

JIM KING	President
MURIEL HART	Vice President
LEO COULSON	Treasurer
GLADYS HURNING	Secretary
RUTH GRAVES	A.W.S.
BOB WOLFE	A.M.S.

# Class of May '41

Co-sponsoring the Junior Prom, sponsoring the semester's original play, "Alma Martyr," was the High Junior Class, the class of May, 1941. Under the presidency of Jim King, member of State's first string football team, the class aided Bob Anderson's class in January, 1941, in putting over the most successful Prom in State's history. Outstanding members of the class were Bob Buckley, managing editor of the Gater and member of the Board of Publications; Lucille Murphy, dancer; Earl Howard, journalist; Thelma Rastad, women's representative; Bill Nanry; Muriel Silverman; Ruth Graves; Jim Martin, editor of the Chaser, and Al Edelstein, Director of Publications.



JIM KING  
*His class promenaded*



JOE EDELSTEIN  
*The sophs strutted*

# Class of January '42

Blood red banners in the Gater proclaimed the crowning achievement of a class active throughout an entire year—the annual Soph Strut in the California Country Club on October 7. Under President Joe Edelstein and his board of young executives, the class spent the year presenting a noon dance, reviving frosh hazing and the semi-annual frosh brawl (until stopped in the spring by the Executive Board), and topped off the year with the Soph Strut. Dick Lotter's music furnished rhythm; the committee of Betty Pierce, Lorraine Schwaderer, Inex Erickson, Pat Prins, Edna Lane, Bill White, Marge Greer, George Fenneman, Jack Kelly made arrangements for the dance.

## •CLASS OFFICERS

JOE EDELSTEIN	President
JUNE McMULLIN	Vice President
NANETTE MITCHELL	Secretary
CARL SENGE	Treasurer
ANITA MAGNESON	A.W.S.
LOUIS QUARTARARO	A.M.S.



*Coach Kupfer captured by beauties at Strut*



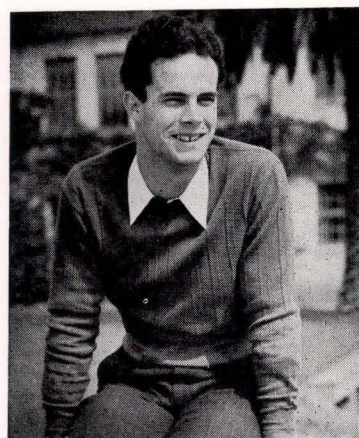
*Swimmer Robinson enjoys herself—So does Tanky!*

## •CLASS OFFICERS

TONY BACICH	. . . . .	President
JAMES SYNAN	. . . . .	Vice President
LILLIAN KAPLAN	. . . . .	A. W. S.
PAT SULLIVAN	. . . . .	A. M. S.

# Class of May '42

Assisting Joe Edelstein's class in putting over one of the most impressive Sophomore Struts in State history was Tony Bacich's class of May, 1943. Becoming Low sophomores in the Fall of 1939, this class acted as co-sponsors for the strut at the California Country Club. Tragedy hit the class at the end of the Fall semester, with practically all officers either dropping out of school or becoming ineligible. Special elections were held and the class continued in an active year, presenting several activities for members during the Spring semester.



TONY BACICH  
*Came through in emergency*

# Class of January '43



DOROTHY FOPPIANO  
*Frosh on Senior Bench!*

The Class of January, 1943 (High Frosh-Low Sophs this year), made an auspicious entry into the annals of State history with a multitude of activities. Outstanding activity of the Fall semester was the combined High-Low Frosh Dance in the gym in October, and co-sponsoring the Soph Strut in October in conjunction with Joe Edelstein's High Soph Class. Spring saw the following officers elected for the ensuing year. President John Finn, Vice-President Vi Nicoloff, Secretary Dorothy Foppiano, Treasurer Manuel Morena, Representatives Barbara Riggs and Jack McInerney. Outstanding members of the class have been Finn, captain of State's first soccer team; Morena, a member of the team; George Otis, State's latest Iron Man of the track; Reno Cordoni and Marv Fairbanks of football; Francis Young, president of the P.E. Club; and Goldie Atwood and Doris Pottle, State's drum-majorettes.

## • CLASS OFFICERS

DOROTHY FOPPIANO	President
VI NICOLOFF	Secretary
BIRGIT JERNER	A.W.S.
CALVIN SANBORN	A.M.S.



*A free dance bid to the lucky egg!*



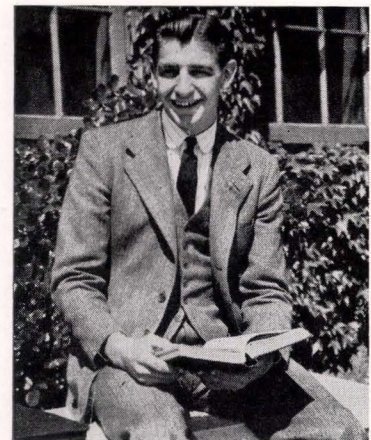
*Frosh class executives*

## • CLASS OFFICERS

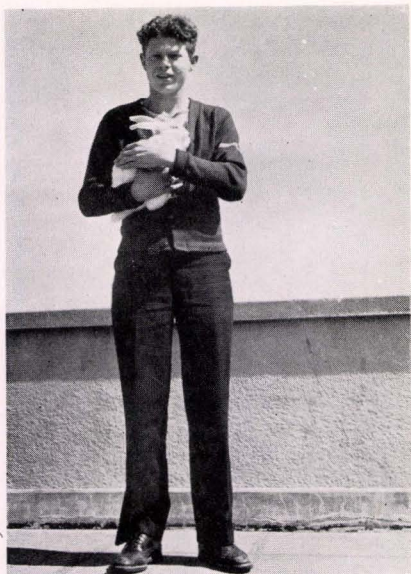
IZZY PIVNICK . . . . .	President
JEAN FREDERICSON . . . . .	Vice President
JEAN SMITH . . . . .	Secretary
JOHN DEASY . . . . .	Treasurer
RUTH ROUCH . . . . .	A.W.S.
JACK ARMSTRONG . . . . .	A.M.S.

# Class of May '43

"Best dance in the history of the college," they called State's Frosh Hop this year, and no student voiced a dissenting opinion. Co-sponsored by the Classes of May '43 and January '44, under their respective presidents, Izzy Pivnick and Jack Gilkey, the dance was held in the Terrace Room of the Fairmont Hotel, to the music of Les Smith. The dance was instrumental in introducing a new song by Roland Ingraham, student composer, which was sung by Wanda Porter. Pivnick served during the spring, was elected to replace Jack Myers, who left school. Outstanding members have been active in sports, clubs, student body affairs, publications. Hop committee was composed of Dave Wilson, Betty Hansen, Jean Fredericson, Anne Brunton, Gilkey, Pivnick.



IZZY PIVNICK  
*Last of the hazing*



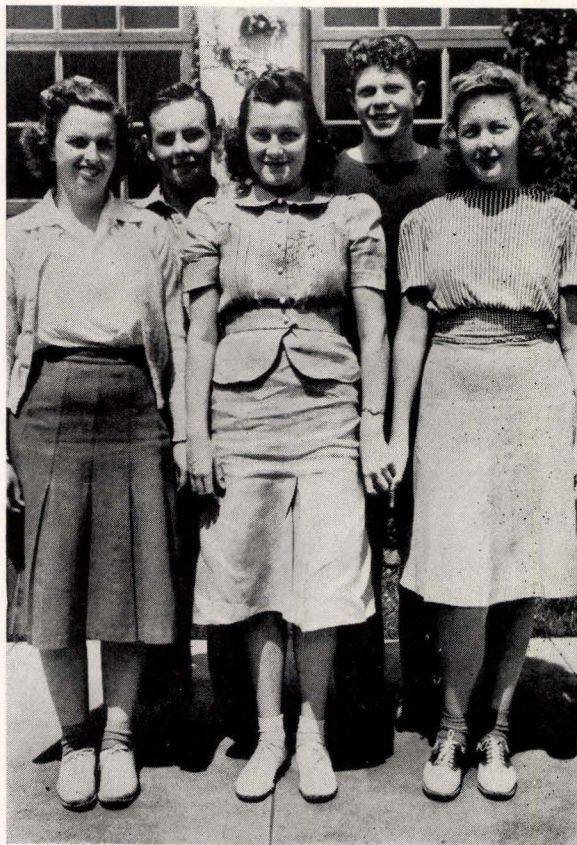
JACK GILKEY  
*A bunny for the Hop*

# Class of January '44

Newest addition to the galaxy of State classes is the class of January '44. One of the most active campus classes is President Jack Gilkey's. Co-sponsors of the Frosh Hop, editors and publishers of "Frosh Doings," class newspaper, members participating in intramural athletics, varsity sports, drama, forensics, publications, this group of 500 had more activities than most junior and senior classes. Easter was the theme of the Hop at the Fairmont, with a committee of Doris Hendrick, Dave Davis, Ed Tankersley, Jacqueline Bloch, Pauline Street.

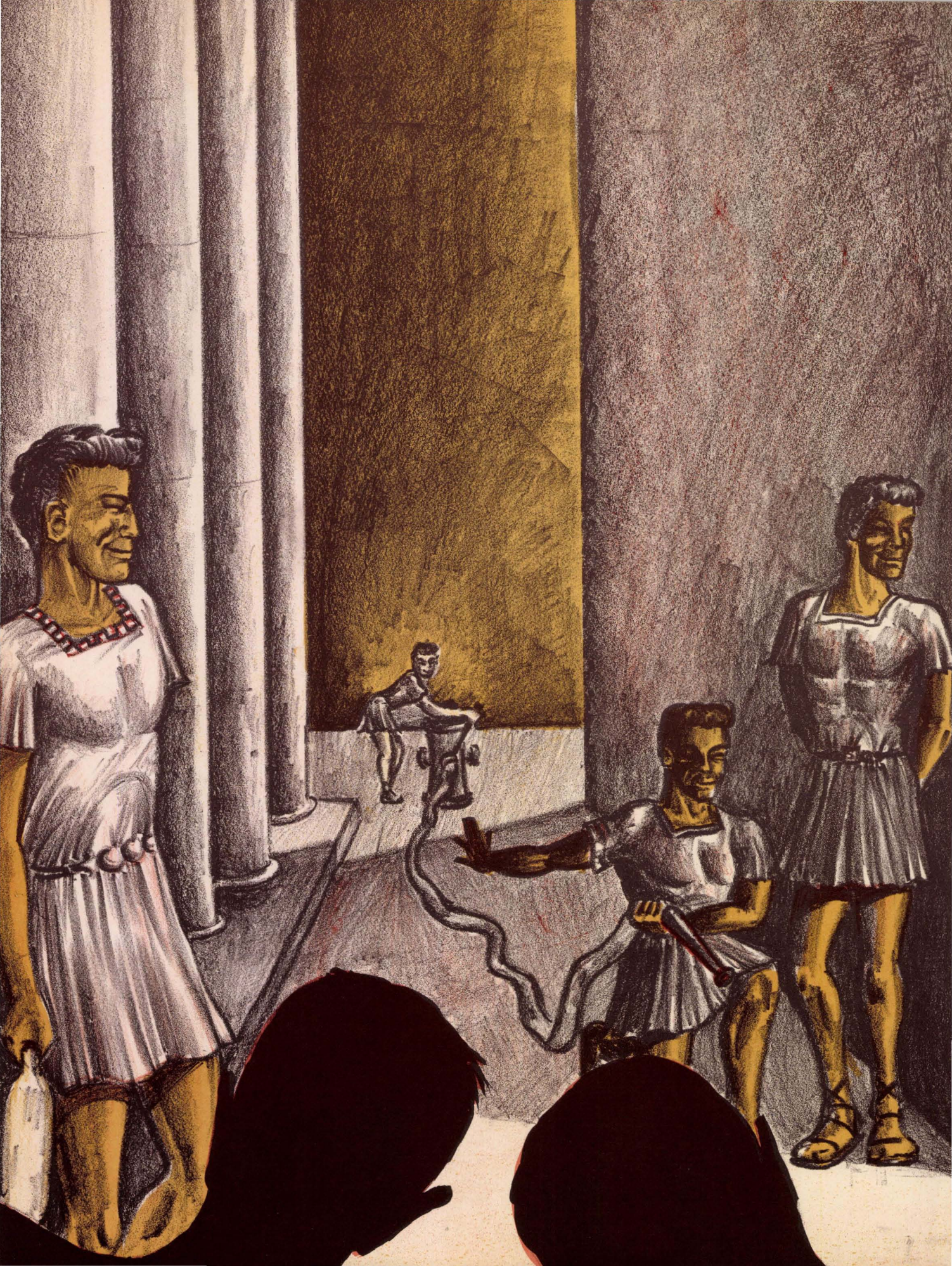
## • CLASS OFFICERS

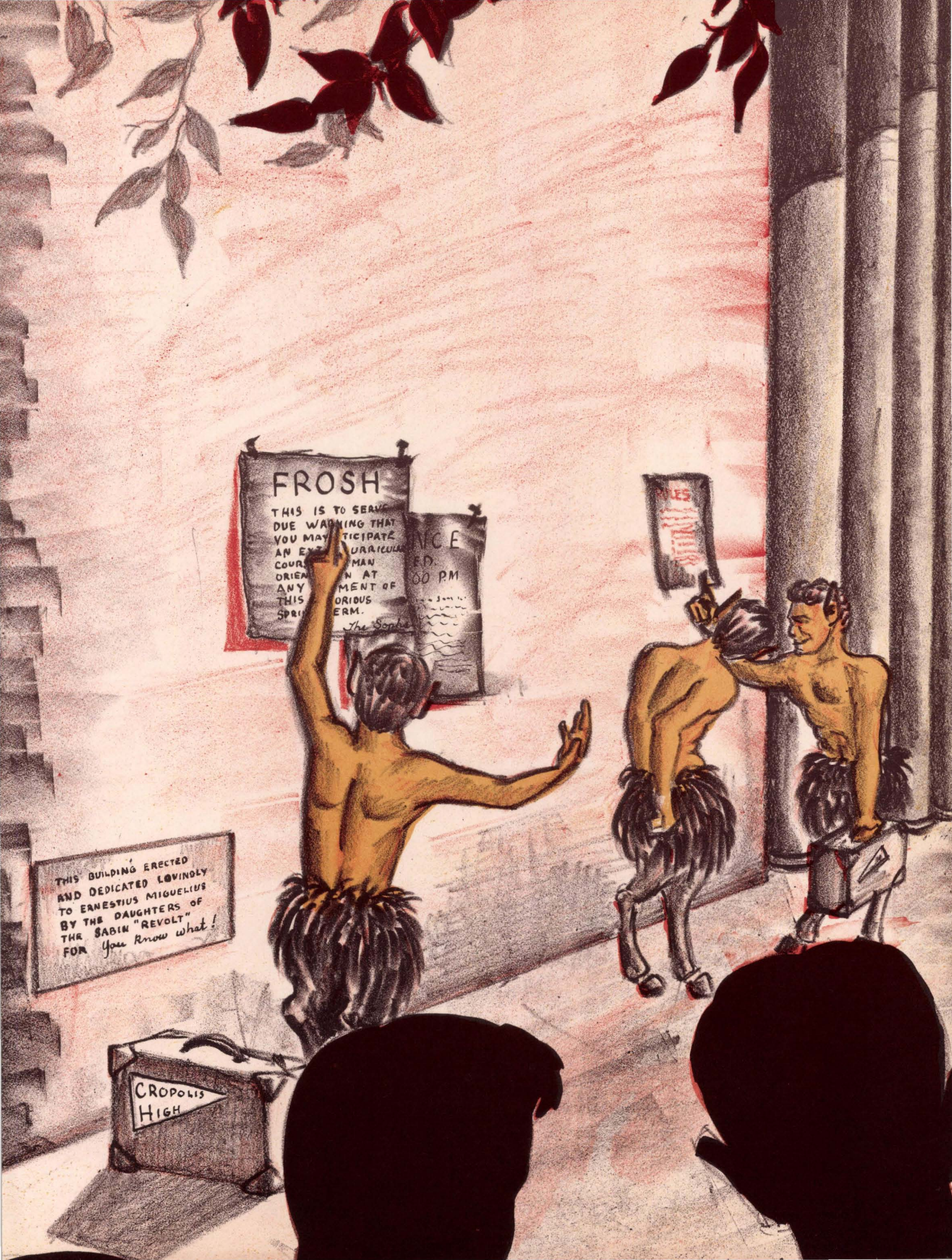
JACK GILKEY	President
ELEANOR NANRY	Vice President
BETTY JANE HANSEN	Secretary
DON PERALTA	Treasurer
ANN BRUNTON	A. W. S.
DAVE WILSON	A. M. S.



*State's Newest Class Officers*

# ● *Organizations*





# FROSH

THIS IS TO SERVE  
DUE WARNING THAT  
YOU MAY PARTICIPATE  
AN EXTENSIVE CURRICULAR  
COURSE IN MAN  
ORIENTATION AT  
ANY MOMENT OF  
THIS HORRIBLE  
SPRING TERM.

NCE  
ED. 100 PM

The Sorority

RULES

THIS BUILDING ERECTED  
AND DEDICATED LOVINGLY  
TO ERNESTUS MIGUELIVUS  
BY THE DAUGHTERS OF  
THE SABIN "REVOLT"  
FOR You know what!

CROPOLIS  
HIGH

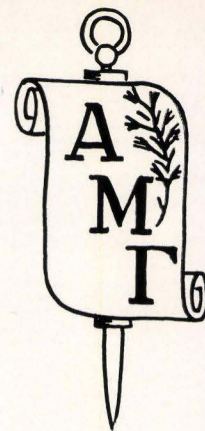


● *Honoraries*

# ALPHA MU GAMMA

INTERNATIONAL HONORARY LANGUAGE FRATERNITY

THETA CHAPTER ESTABLISHED 1936



## OFFICERS

Sarita Canedo	President
Virginia Cronier	Vice President
Dorothy Chandler	Secretary
Steve Parodi	Treasurer
Mme. Marie Dony	Sponsor

## MEMBERS

George Alves	Fumiko Sugihara
Eugene Vdovin	Rose Perlman
Alex Shelekov	Ed Pierce
Victor Vari	Jeanne Spagnoli
Dorothy Ramus	

German, French, Italian, Spanish are the main interests of members of Alpha Mu Gamma, dedicated to the furtherance of the study of foreign languages in colleges. Delegation of four members to the bi-annual national convention on the campus of Los Angeles City College on March 17, 18, and 19 was one of the main items of fraternity business this past year. Also included in the round of activities were several parties, dinners, picnics. Mme. Dony was host of the fraternity at several get-together meetings and dinners.



# ALPHA PHI GAMMA

NATIONAL HONORARY JOURNALISM FRATERNITY  
ALPHA GAMMA CHAPTER CHARTERED 1931

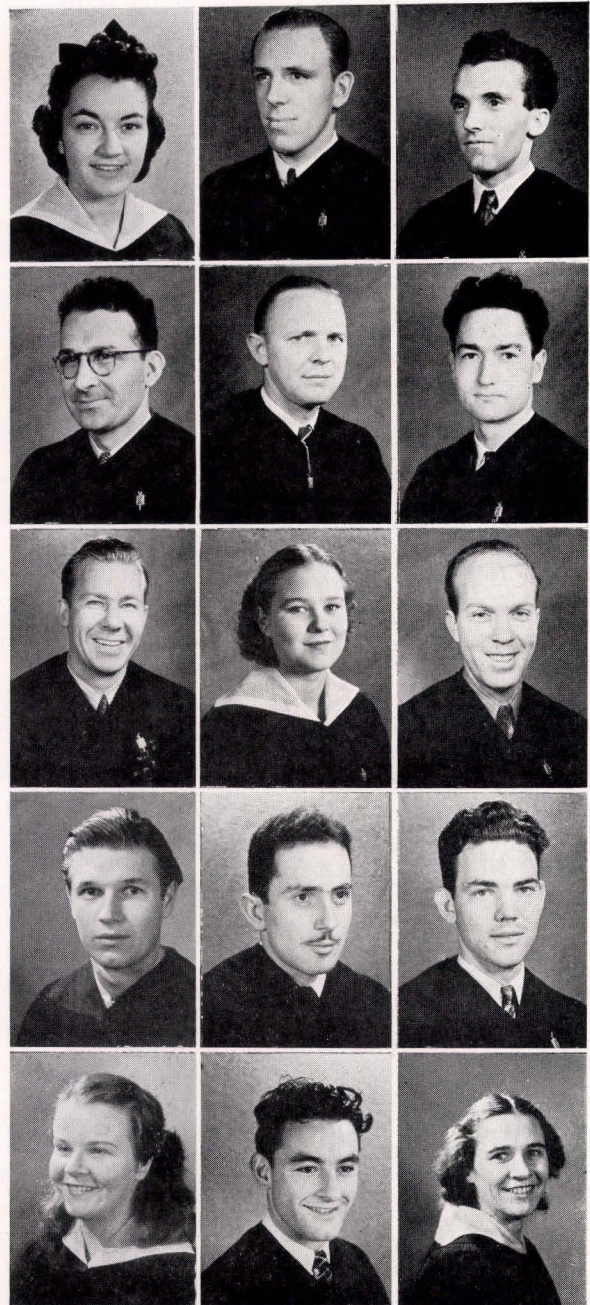
## OFFICERS

ERWIN BISCHOFF . . . NATIONAL PRESIDENT  
Louise Vallarino . . . . . President, Fall  
Ernie Miguel . . . . . President, Spring  
Margaret Sullivan . . . . . Secretary, Spring  
Wade Brummal . . . . . First Vice-President  
Arthur Monsees . . . . . Second Vice President  
Ed Smith . . . . . Bailiff

## MEMBERS

Dorothy Taliaferro	Ed Poole
Wilma Hill	Jim Martin
John Pichotto	Fred Bender
Sherman Grant	Lew Morris
Dr. T. E. Treutlein	Dr. George Gibson
Alex Edelstein	Betty Zehnder
Bob Buckley	Jean Coplestone
Phil Schmidt	
Mary L. Kleinecke (deceased)	
Arthur Brisbane (deceased)	

Replete with activity was the year of Alpha Phi Gamma just passed. The fraternity, reviving their Mary L. Kleinecke memorial journalism scholarship, presented a series of benefit dances and the Chicken's Ball, acclaimed as the outstanding social event of the season. To the outstanding varsity athlete in the college went the Alpha Phi Gamma athletic trophy in the eighth annual competition. To the fraternity the honor of a member elected national president; three local chapter presidents, three secretaries, two picnics, parties, barbecues, two initiations.



# DELTA PHI UPSILON

HONORARY KINDERGARTEN-PRIMARY SORORITY  
STATE CHAPTER ESTABLISHED 1930



## OFFICERS

Maria Dehe	President, Spring
Helen Newell	President, Fall
Mary Marvin	Vice-President

## MEMBERS

Enid Hildring, Doris Heimerle, Bernice Riley, Marjorie Stewart, Jean Fry, Mary Bock, Trudi Strauss, Margaret Carpenter, Ruth Bastin, Barbara Cuneo, Betty Varni.

Both men and women are eligible for membership in this honorary fraternity, although the sparsity of men registered in the kindergarten-primary and the requirement of a 1.85 grade average and passing the piano test makes membership of males practically prohibitive. Scrapbooks for migratory children, entertaining the alumni on March 16, sponsoring speakers teas and the convention at Chico State in April were activities entered by the sorority last year.





# DELTA SIGMA NU

HONORARY HOME ECONOMICS SORORITY  
STATE CHAPTER CHARTERED 1930

## OFFICERS

Pearl Dondero	President
Alyce Fratessa	Vice President
Marian Bryant	Secretary
Irene Larkin	Treasurer
Frances Sara	Historian

## MEMBERS

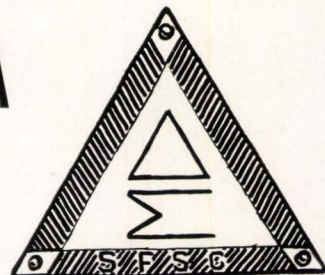
Marion Mulholland	Jeanne Spagnoli
Rose Perlman	Mary Marvin
Helen Michelson	Carol Pixley
Dolores Ferarri	Barbara Robinson
Joan Smith	

A semesterly benefit for some worthy cause marks the major portion of activity for Delta Sigma Nu. Proceeds from a campus home-made cake sale raised the necessary funds to carry out their work during the Fall semester, and a candy sale furnished profits enough to carry out the Spring activities. An installation dinner on the first Wednesday of January opened the term of office of President Dondero, among whose activities was the making of dolls which were displayed in Frederic Burk. Requirements are sponsorship by a member, a one-point average, vote of the sorority. Members are required to be active in courses in home economics.



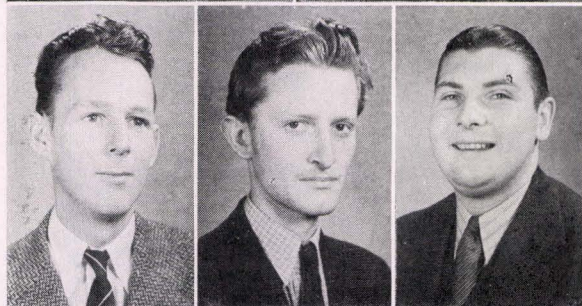
# DELTA SIGMA

DEBATE AWARD FRATERNITY  
ESTABLISHED 1930



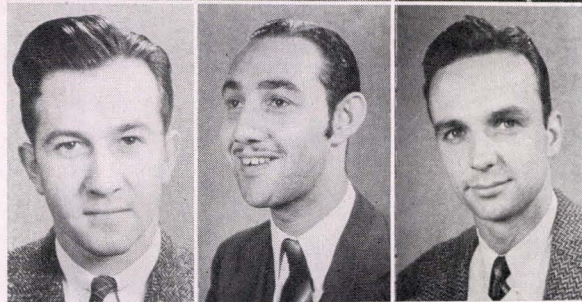
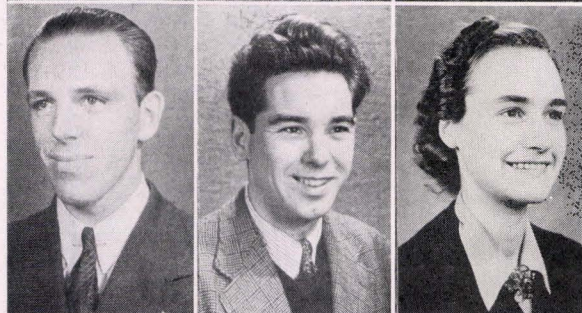
## OFFICERS

Arnold Vezzani	President, Spring
Vivian Fleming	Manager, Spring
Bob Sigerson	President, Fall
Henry Bartel	Manager, Fall
Rudy Koller	Frosh Manager
Al Raby	Secretary



## MEMBERS

Shirlie Senk	Bob Sweeney
Dick Date	Erwin Bischoff
Warren E. Thornton	Marcus Davis



Managing board for all debate activities, as well as honorary organization for all debaters who have won the coveted award, is Delta Sigma. Officers of this organization are officers also of the Forensic Council and heads of the various debate activities. Principal among its numerous activities each year are the intercollegiate debates (on the radio and on the rostrum), frosh and jayvee debates, the semi-annual high school debate tournament, bringing over one hundred teams from all over the Pacific Coast. Winner in 1939 was Hollywood High, this spring's winner, Lowell. A series of radio debates was sponsored by the organization, including debates with Cal, Stanford, St. Mary's, others. Frosh debated over KROW against other frosh teams.



# KAPPA DELTA PI

INTERNATIONAL HONORARY EDUCATION FRATERNITY  
GAMMA SIGMA CHAPTER ESTABLISHED 1934

## OFFICERS

Barbara Cuneo	President
Walter Schwartz	Vice President
Alice Wollak	Treasurer
Ruth Walter	Secretary
Marjorie McIlveen	Historian

## MEMBERS

Fred Kline	Margaret Haworth
Ed Smith	Marvin Harvey
Barbara Curry	Marjorie McIlveen
Bobbe Sandeen	

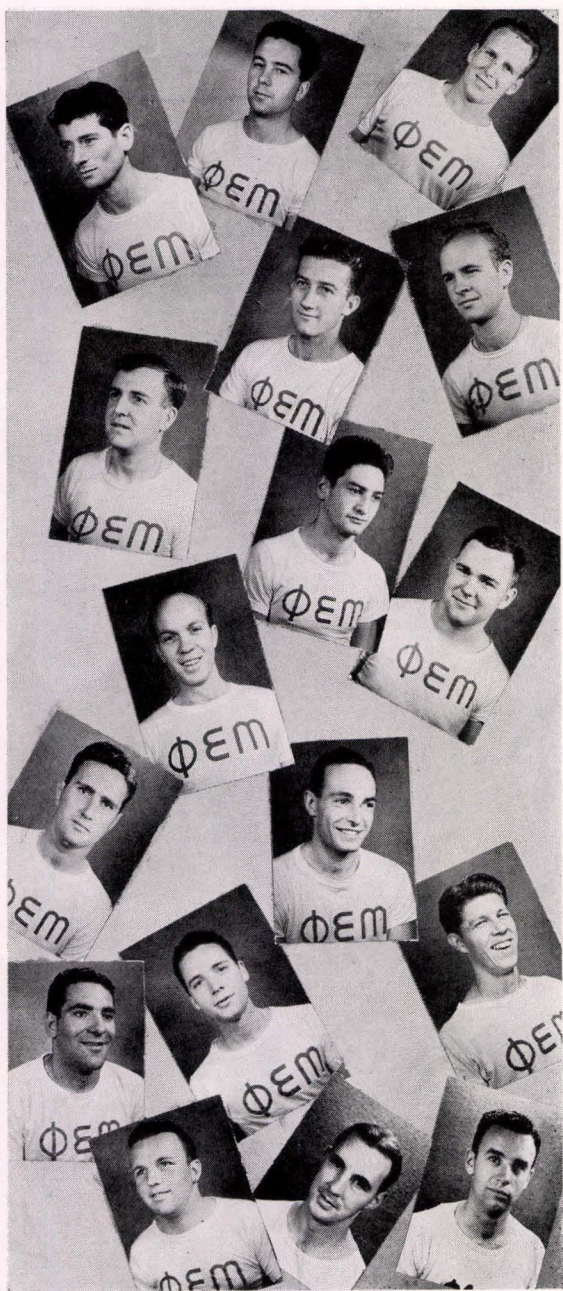
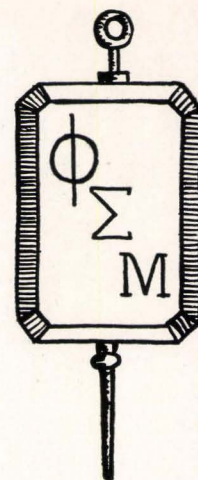
Originally founded as a teacher's training school, San Francisco State has since grown until it now has a liberal arts college composed of almost half the student body. That State still is recognized as one of the major teacher training institutions of the country however, is evident on a study of the activities entered by Kappa Delta Pi fraternity, dedicated to furthering higher educational standards and recognizing special achievement. Notable among activities are the annual Christmas party given children of Sunshine school, meetings with speakers Dr. Walter F. Dexter, Mrs. Anna Dorris, Dr. W. J. Homan. Dean Homan represented Gamma Sigma chapter at the international convention in St. Louis in the Spring. Plans were completed for an alumni chapter and a junior organization.



# PHI EPSILON MU

HONORARY PHYSICAL EDUCATION FRATERNITY

ESTABLISHED 1939



## OFFICERS

Vern Oullette	President
Charles Iago	Vice President
Jack Madigan	Secretary
Claude Hanrahan	Treasurer

## MEMBERS

Jim Lowrie	Bill Plutte
Dave Schiller	Dick Webster
Ed Smith	Jack McGann
Chad Reade	Harold Chandler
Bob Kelnhofer	Bill Stein
Mario Machi	George Otis
	Jack Kelly

Increased interest in intramural athletics, through better refereeing, better publicity, and better management has been to a great extent the work of Phi Epsilon Mu this past semester. Members of the fraternity have served as referees for all major intramural contests, have succeeded in aiding the development of intramurals into a major activity of most of the campus males. Plans for next year will have the fraternity taking complete charge of all intramural activities.



# SIGMA ALPHA ETA

MEN'S HONORARY FRATERNITY  
ESTABLISHED AT S. F. STATE, 1938

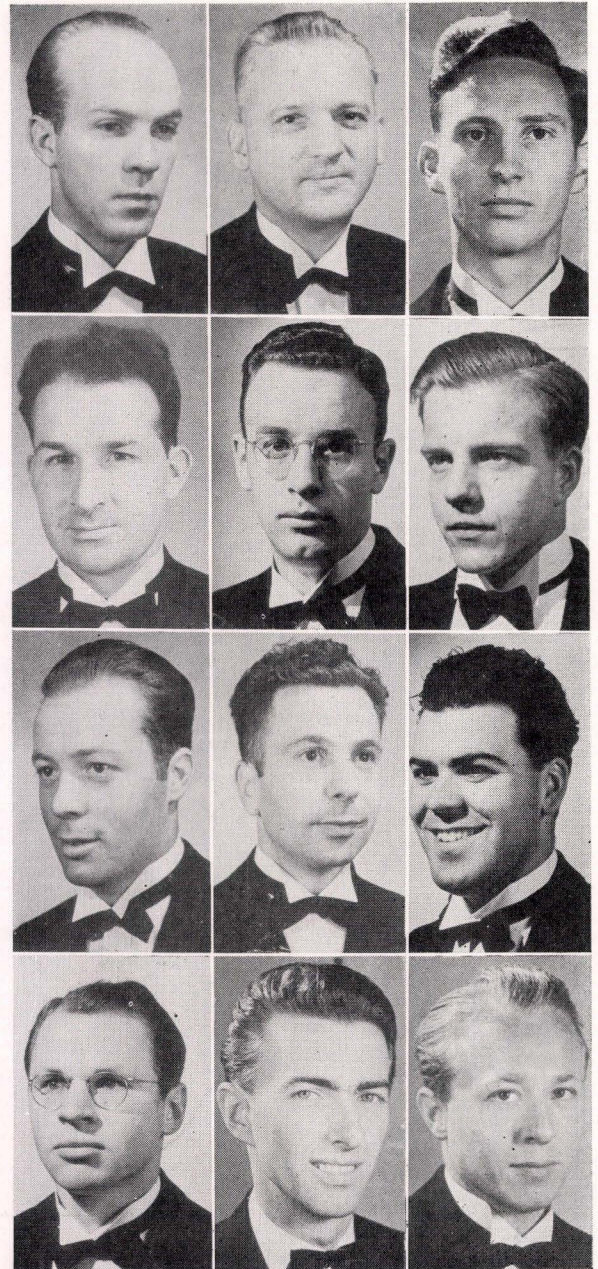
## OFFICERS

Ed Smith . . . . .	President, Fall
Jack Hulbert . . . . .	President, Spring
Doug Kidd . . . . .	Vice-President, Fall
Guido Fumigalli . . . . .	Vice-President, Spring
Ed Pierce . . . . .	Secretary, Fall
Lewis Morris . . . . .	Secretary, Spring
Fred Kline . . . . .	Treasurer, Spring
Dr. Stanley Morse . . . . .	Sponsor

## MEMBERS

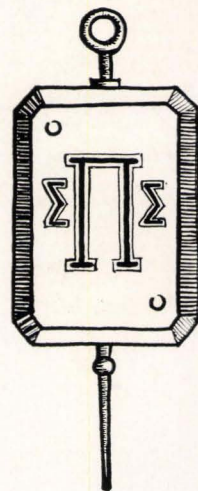
Jack Madigan	Dick Lotter	Socrates Pantages	Nick Munson
Vernon Noble	James Martin	Dick Hall	

White carnations and purple ribbons blossom out semi-annually on the campus, marking both Sigma Alpha Eta Day and the final awarding of the men's honorary fraternity's semesterly scholarship to the outstanding scholar among the men, chosen by the Dean's Committee. Besides awarding the scholarship each semester, the fraternity fills out an active season by speaking on the value of extra-curricular activities before the frosh orientation classes, taking the lead in formation of an intra-fraternity council here at State.



# SIGMA PI SIGMA

MEN'S COLLEGE SERVICE FRATERNITY  
ESTABLISHED AT S. F. STATE—MAY, 1938



## OFFICERS

Bob Anderson	President, Fall
Jack Fischer	President, Spring
Jack McGann	Vice-President
Ed Barry	Treasurer
Bob Buckley	Secretary
Bob Cumming	Custodian

## MEMBERS

John Pichotto, Bob Sweeney, George Weekes, Tony Barch, John Finn, George Fenneman, Bob Wolf, Bill Stein, Bill White, Alex Edelstein, Don McRitchie, Jim King, Benny Souza, Lou Quartararo, Joe Edelstein. Pledges Al Barros, Jack Carolan.

To serve the student body in all capacities, to boost school spirit, Sigma Pi Sigma was organized in May, 1938. The group of 21 members represent every field of academic learning in this college. Outstanding achievements during the last year include sponsorship of a lecture for the students by Brother Leo, a Spring Informal Dance, Organization of a Fire Drill Committee, approved by the Dean's Committee, prominence in intramural and intercollegiate athletics, a formal dinner-dance initiation at the Palace Hotel. Dr. Frank Fenton is faculty sponsor.



# ALPHA OMEGA

WOMEN'S SERVICE SORORITY

ESTABLISHED 1939

## OFFICERS

Jean Van Arsdale	President, Spring
Betty Pierce	President, Fall
Thelma Rastad	Vice President
Ruth Graves	Secretary

## MEMBERS

Lucille Murphy	Gerry Polite
Rosemary Saum	Bee Cleary
Vi Nicoloff	Ruth Graves
Margaret Greer	Mary Jo Spaulding
Dorothy Foppiano	Lillian Kaplan

Newly organized on the campus, Alpha Omega filled their first year giving parties, entering the Chicken's Ball with the fourth place act, presenting the best gym dance of the year (the Barn Dance), assisting in starting the women's intramural tournament. Interest in student politics was prominent in the sorority, with offices being held by Thelma Rastad, Gerry Polite, Jan Van Arsdale, Dorothy Foppiano, Vi Nicoloff, Rosemary Saum, Bee Cleary and Lillian Kaplan, yell leaders.





# CHICKENS BALL

Although there are few, if any, students here at State who can remember when the San Francisco Earthquake in 1906 ripped up San Francisco, tore down the hallowed halls of this college, the Chickens Ball is still remembered as symbolic of pre-earthquake San Francisco.

The Old-time Chickens Ball, lasting three days and three nights, featured programs put on by all hotels and restaurants in the city.

Recently revived by Alpha Phi Gamma on the State campus, the Chickens Ball featured events by each club, lasted but one night, was the outstanding program put on by any campus honorary fraternity or club.

Emceed by maestro Sherman Grant, screw-ball musician, who was assisted by crackpot Music Federation members, the program was acclaimed throughout the city, was featured in several city newspapers.

Acts presented included the Newman Farce, "City Fights," the Bib 'n Tucker act "Three Old Maids," the Alpha Omega "Paris Nights" act, and the Floradora girls from Phi Lambda Chi dancing the Can-Can.

First prize winner was "The Great Maharajah" from Sigma Pi Sigma. Other prizes went to Bib 'n Tucker (*second*), Newman Club, (*third*). Sigma Pi Sigma copped the ticket selling trophy.

In the above scenes the Five Rhythmettes from Kappa Delta Tau are going through their paces as Sherman Grant surveys his vegetable crop. Louise Vallarino beams as she presents the first prize cup to the Great Maharajah Louis Quarterero and Verducci is rolled out of the barrel by Newmanites. Dorothy Fitzpatrick sings for the Gater Shuffle and the Floradora girls go to town with an 1890 strip tease. Corinne Ketterlin boasts about "Billy" for A.W.S.

● *Clubs*

# Organizations



## ● KAPPA DELTA TAU

Dance group for the more aesthetically inclined girls is Kappa Delta Tau. A strenuous, full year for the members of this modern dance organization included a dance and song concert on the campus. Programs at Stanford and Cal, exhibitions at the Fair, programs downtown. Officers were Ruth Kaplan, president; Mary Ann Chapman, secretary; Wilma Craig, costume manager.



## ● PHI LAMBDA CHI

Organization binding together Protestant girls, both who live in the Phi Lambda House (one of the two sorority houses of the college), and participating in an active program for both undergraduate and alumni members is Phi Lambda Chi. Adelle Hopper was president during the last year, which saw Phi Lambda Chi entering in the Chicken's Ball, presenting several parties, two open house nights.

*Row One, left to right: Jean Hughes, Carolyn Grosbe, Bernice Martos, Dorothy Bareilles, May Wohlk, Esther Reicks, Virginia Hannab, Ellen Holley, Meroding Hill. Row Two: Esther Rasmussen, Margaret Carpenter, Gladys Thompson, Glebna Sliter, Lois Kaiser, Joan Cameron, Mardis Mullen, Gladys Hurning, Helen Newell, Doris Heimerle, Virginia Brandlein.*



## ● ART FEDERATION

Formed last October to bring art students of the college in closer contact was the Art Federation. Approval of all posters for the student body, art exhibits, and patronage of student art work is the work of the newly formed organization. The organization includes the Brush'n Palette and all other art groups on the campus. Officers for the year were: Ellard Cook, president; Dolores Garcia, secretary; and an Executive Board composed of Leslie Klepper, Roy Disson, Pat Gillick, Violet Chase, and Englebright.

*Executive Board, left to right: Leslie Klepper, Violet Chase, Mariba Baldwin, Virginia Green, Ellard Cook, Dolores Garcia, Pat Gillick, Alice Smith, Maurice Inglebright.*



## ● ANDRO-SPHINX

The intellectual among the clubs on the campus this year is the men's discussion group, Andro-Sphinx. Each week the club meets at the home of some member, where one of the members speaks on some controversial question, with all others joining in the argument immediately afterward. President during the past year was Charles Maurer.

*Left to right, top row: Marwin Harvey, Ray Hutchinson, Henry Evans, Dr. R. Cave, Ernie Bicknell. Bottom row: Herb Smith, Ted Wood, Charles Maurer, Dr. T. E. Trentlein.*

# Organizations

## ● FRENCH CLUB

While the English were polishing off their French for World War II, students at State were smoothing over their knowledge of the intricacies of the language so they could completely enjoy the round of dinners, parties and picnics sponsored by the French Club. The officers last year were Mme. Dony, sponsor; Pat Sullivan, president; Elaine George, vice-president; Ravell Carlan, secretary; and Victor Groat, treasurer.

*Left to right: Cynthia McIntyre, Tanya Markofski, Bob Rogers, Elaine George, Pat Sullivan, Mme. Marie Dony.*



## ● NEWMAN CLUB

Rapid fire activities, including barbecues, picnics, dinners, dances, parties, breakfasts, as well as the regular meetings and the annual Newman Classic, the Formal at the Palace, marked the regime of Wade Brummal as president of the Catholic organization. Direction of all events for the year was under the guidance of the Newman executive council, composed of Brummal, Vice-President Gertrude Egan, Treasurer James Synan, and Charlie Iago, Art Beese, Pete Padilla, Mary Bowers, Dotty Thomas, Dorothy Govednick, and Harriet Miller.

*Left to right, top row: Charlie Iago, Art Beese, Wade Brummal, Jimmy Synan, Pete Padilla. Bottom row: Harriet Miller, Mary Bowers, Gertrude Egan, Dorothy Thomas, Dorothy Govednick.*



## ● ITALIAN CLUB

Disorganized at the beginning of the year, revived in the middle, the Club Italiano swung into an extensive round of activities in the latter fall and entire spring semesters. Italian language and promotion of the study of Italian culture is advocated by the group. Walter Logormarsino served as president, assisted by Eddy Erigero, vice-president, and Aida Leguano, secretary-treasurer.

*Front Row, left to right: Lucille Molinelli, Ida Leduano, George Rapozo, L. Fabelli; Back Row: Eddie Erigero, Walt Logamarsino, Bernard Mallarino, Victor Vari, Don Pagani, Dan McNulty.*



## ● DRAMA COUNCIL

Supervision, direction, makeup, and stage settings for all College Theater productions come under the Drama Council and its appointed chairman. Unique among college organizations in that the executive is appointed by Jessie Casebolt, College Theater director, this organization this year put on several plays, including two at Treasure Island, the student-directed, produced production, "She Stoops to Conquer." Chairman was Benny MacMillan.

*Row One, left to right: Herb Smith, Jack McKenny, Carl Nichols. Row Two: Sylvia Gutbertz, Benton MacMillan, Noreen Honneff.*



# Organizations



## ● INTERNATIONAL RELATIONS CLUB

I.R.C. is an international organization to promote international study and understanding, holds the distinction of being the oldest, and at one time the largest, campus organization. The local club maintains a library on the campus, sends delegates to conferences, sponsored meetings at which internationally known figures spoke. President for the year was Vivian Fleming and Bernice Riley.

Row 1, left to right: Nadja Fenchuk, Eve Hirschberg, Sybil Nelson, Margaret Ems, Vivian Fleming, Ethel Southam, Esfir Levin. Row 2: Doris Coulter, Phyllis Owens, Phyllis Bass, Jean Olsen, Kathleen Robinson, Marjorie Graham, Diana Jew, Marjorie Louie, Letitia Martin. Row 3: Amante Udarbe, Ernie Miguel, Gene Vdovin, Millard Hampshire, Primo Abantao.



## ● SPANISH CLUB

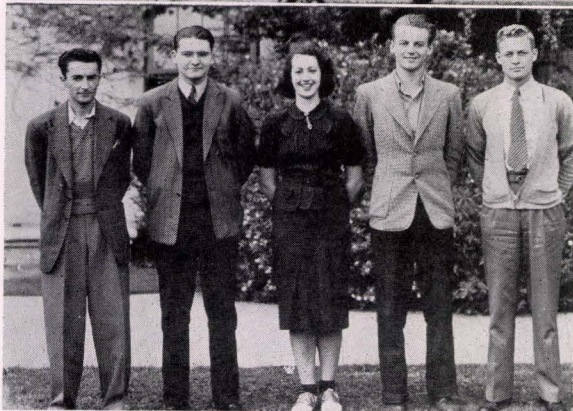
Los Lazarillos (the Alligators), they call themselves in the language they are furthering on the campus in form of the Spanish Club. A continuous round of parties, picnics, bike rides, entertainments fills out the year of the club, which also entered into the Chicken's Ball, co-sponsored several events in conjunction with the Brush'n Palette. Ed Hayburn was president.



## ● FORENSIC COUNCIL

Supervision of all debate tournaments, binding together of all persons interested in or partaking of the art of argumentation are the main purposes of the Forensic Council, regulatory body of State forensic activity. Officers of the organization are the same as those of the sister organization of the college's hierarchy of debate organizations, Delta Sigma. Some members debate—some listen.

Front row, left to right: Sherry Auerbach, Blanche Palmer, Arnold Vezzani, Vivian Fleming, David X. Lull. Back row: Eddy Mann, Henry Bartels, Al Raby, Erwin Bischoff, Rudy Koller, Tex Sigerson, Sam Dana.



## ● GERMAN CLUB

Fresh from the laurels of Staats Theater in Vienna came Frau Ehren to entertain State's German Club with dramatic recitations and an address on the theater in pre-Nazi and Nazi Austria. Other activities of the club included parties, speakers, dinners, as well as the regular weekly meetings. Formed in the interest of the study of the German language and to bring together all German-speaking students, the club was directed this year by Trudi Strauss, president.

Left to right: C. Lagis, Clay Andrews, Trudy Strauss, George Nelson, Eugene Debrecht.

# Organizations

## • FRANCISCAN CLUB

Originally formed as a protective association for members of the Franciscan staff and their friends, the Franciscan Club has blossomed forth as a major power on the campus. Membership cards permit one to enter the Franciscan office without danger of being molested, and to bring one friend who must pass the approval of a board of directors. Ernie Miguel is charter president. Betty Davis is queen of the honey and sacred keeper of the bees.

Row One, left to right: Wade Sullivan, Betty Davis, Margaret Zebnder, Betty Brummel, Ed Schmidt, Dorothy Sigerson, Bobbie Talliaferro, Elizabeth Davis, Ernie Miguel, Elizabeth Fairchild. Row Two: E. Anne Davis, Helen Bicknell, Anne Pierce, Eliza Davies, Dorothy Zebnder, Betty Talliaferro, Peggy Schmidt, Edwin Miguel, Uncle Fred Bender, Doug MacMullen, Stephen R. Fills, Patrick Brummaloff.



## • PRE-NURSING

The Pre-Nursing Club is an organization that endeavors to bring the students majoring in Pre-Nursing courses closer together in their relationships with each other. Under the sponsorship of Dr. Barney a successful year was carried on by the group this year. Numerous activities were held, such as a tea, lectures, discussions, parties.



## • BRUSH'N PALETTE

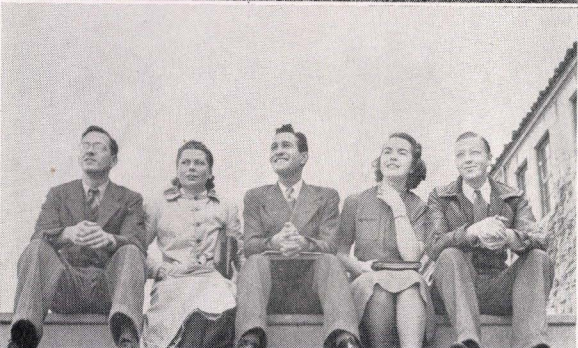
A party that "wowed them," receptions for new art students, and their Folk Dance Festivals in Frederic Burk Auditorium, plus bike rides, Christmas parties, and picnics marked the year for Brush'n Palette, art club. Violet Chase held the office of club president.

Row One, left to right: Virginia Brandlein, Dick Best, Dorothy Thomas, Jean Maban, Violet Chase, Virginia Anderson, Leslie Klepper, Pearl World. Row Two: Marjorie Chard, Marjorie Hoffmeister, Beth Sutherland, Charlotte Sattler, Ed Hayburn.



## • A.B. GRADS

Uniting all graduate students of the college together in a congenial group is the Graduates Club, composed solely of A.B. Grads of this and other colleges who have returned for further credentials or to work toward higher degrees. Several dinners and parties were held by this club, one of the largest on the campus. Samuel Taormina was president during the fall of 1939.

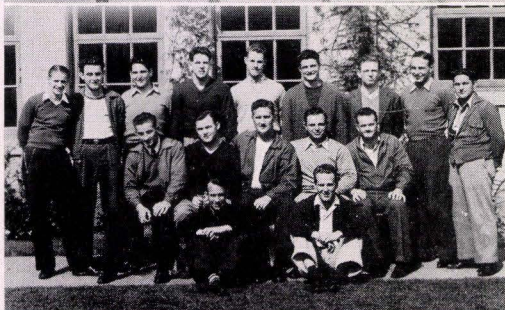


# Organizations



## • BETA PI SIGMA

Themes ranging from narcotics, paralysis, color photography and frogs, to bridges, orchids, and science and culture, were heard last year by members of the State Science Club, Beta Pi Sigma, at their weekly meetings. Speakers included Dean Valentine, Roy Metcalf, Bert Steuhler, and Inspector W. E. Creighton. Presiding officer during the year was Nick Munson.



## • BLOCK S

Binding all athletes from every variety of sports events together in one group and developing greater interest in State athletics among students and alumni, was the primary function of the Block S society. Any man who has won his block in any sport may join the club. Former football and baseball star Bill Abbey was president.

*Row One, left to right: Bill Hammond, Bued Chandler; Row Two, Ed Castro, Jim Myers, Bill Plutte, Bill Abbey, Guido DeGhetaldi; Row Three, Johnny Pichotto, Manuel Morena, John Finn, Jack Fischer, Chad Reade, Spider Turner.*



## • P.E. CLUB

Husky, athletic women comprise the membership of the Women's Physical Education Club. Organized in the interests of furthering the study and pursuit of physical prowess and perfection through physical education, the club spent the year listening to lectures on P.E., discussion of factors in the instruction of physical ed., parties, barbecues, picnics. Officers—President Florence Abraham, President Frances Young, Secretary Ruth Carlton, Treasurer Claire Knabenshub, Commissioners Betty Hendry, Frances Young, Marion Bassett, Peggy Smith.



*Row One, left to right: Bobbe Sandeen, Corrinne Ketterling, Ruth Colcolugh, Florence Abraham, Betty Hendy, Frances Young, Lucille Paulson, Jean Madison, Doris Beribeaud, June Meese. Row Two: Lorraine Gallagher, Margaret Wormell, Josephine Biggi, Helen Crookham, Lucille Henry, Gladys Janssen, Anna Davis, Helen Ashton, Norma Taloff, Jane Baker, Claire Knabenshub, Marian Bassett, Madeline Petrazzelli.*

## • SIGMA RHO GAMMA

Sigma Rho Gamma was formed for the Rainbow Girls of State. This club is primarily a social organization, and it holds as its main aim the presentation of scholarships every semester to the needy pupils at Frederic Burk Training School. Activities of the year were an informal and formal initiation, a card party for the purpose of raising money for the scholarship fund.

# Organizations

## • FENCING CLUB

Organized to promote State's newest athletic ventures, men's and women's fencing, Len Duckworth's Fencing Club has since sponsored varsity matches that placed State on a superior basis to Cal, Stanford, San Jose State, Chico State, the Italian A.C. Officers were President Bob Lee, Secretary Dot Cloud, Treasurer Hazel Hill, Vice President Hazel Hill, Sponsor Don Kupfer.



## • OLD MEN'S ATHLETIC CLUB

Organized early in 1939 solely for the purpose of competing in intramural athletics, the Old Men's Athletic Club filled their year by winning the volley ball title, officiating basketball tournaments, entering baseball, winning third place in football, winning the distinction of having never defaulted in an intramural game. President was Tom Collingwood, officers were Harvey Glassenburg, Dan Rubin, George Thayer.



## • BIB'N TUCKER

"Three Old Maids," they called their second place winning act in the Chicken's Ball, but the clothing advocated by this exclusive fashion setting organization this year was from old-maidish. Bib'n Tucker is formed for the purpose of furthering better styles and habits of dress among the girls of the college. Elvira Huenergardt was president; Marge Furtado and Bernice Bianchi directed the "Three Old Maids" act.



## • BADMINTON CLUB

Sponsoring intramural badminton matches, furthering noon day sports, the Badminton Club is composed of adherents to the shuttlecock sport. Among members are Ru Stone, Bee Cleary, Joe Edelstein, Pat Sullivan, Gerry Polite, Mary Ann Chapman.



# Organizations



## ● AMERICAN NEWS GUILD

Cholly Chaser, chubby stereotype of Joe College, was brought to life on this campus in November, 1939. Midwife was typesetter Harry Landers, mother, State's Chapter of the News Guild. Guardianship of the roly-poly, raucous youngster has fallen into the hands of the proud parent, the Guild. Administration of the magazine was delegated to the chuckling combination business manager and editor, Mr. James F. Martin. The Guild itself was taken care of by its officers for the fall term, President Carol Crouch, Treasurer James F. Martin, Secretary Edward Fairchild Pierce, and by the officers for the spring—President Ed Poole, Secretary Frederick Michael Bender, Vice-President Bob Buckley, and again Treasurer James F. Martin.

*Seated, left to right: Bob Buckley, Jean Deckman, Dorothy Talliaferro, Jo Ashlock, Sherman Grant; standing, left to right: Ernie Miguel, Fred Bender, Stub Harvey, Lewis Morris, Charlotte Sattler, Ed Tankersley, Pearl World, Jim Martin.*



## ● ADVISORY COUNCIL

Registration committees and assistance to all students, new and old, on Registration day comes under the authority of the Advisory Council. The committee assists programming, presents a series of teas and parties and dinners. Dean Mary A. Ward is sponsor of the advisory group.

*Row One, left to right: Mae Woblé, Polly-Ann McCarthy, Irene Martin, Gladys Hurning, Ruby Parmely, Joan Cameron, Betty Wagner, Olga Peterson, Lucille McKee, Victoria Evergood. Row Two: Sylvia Gutbert, Marjorie Chard, Carolyn Grothe, Jean Mahan, Ben Lavezzo, Sally Sayles, Evelyn Rand, LaVerne Bilse, Virginia Barry, Barbara McGovern, Alice Wolak, Ruth Graves, Evelyn Ross, Abina Sullivan. Row Three: Bernice Riley, Dorothy Chandler, Nadine Schendel, Louise Valente.*



## ● WESTMINSTER CLUB

Social welfare organization for all Protestant students is Westminster Club. Throughout the year the Dr. P. F. Fisk sponsored club ran benefits for migratory workers, helped support a mission in China, sponsored speeches on labor, unemployment, the "Okies," religion.



## ● ALPHA CHI EPSILON

Hitting a new high for mass initiations on the campus, inducting 30 pledges into the association at one time, Alpha Chi Epsilon, early childhood education group, completed an active season this spring which included teas, parties, and preparation of baskets and donations to needy children over the Christmas Holidays. Blonde, blue-eyed Carolyn Grothe was president of the newly enlarged organization.

*Row One, left to right: Jane Fraser, Alyce Fratessa, Dolores Ferrari, Dena Witte, Rhoda Ayres, Margaret Veyglas, Doris Heimerle, Carolyn Grothe, Pat Vellon, Estelle Cohn, Nellie Mourdikian, Helen Lucchetti, Betty Aronsen, Gerty Egan. Row Two: Irene Morgan, Pat Primo, Flora Farina, Gladys Barnett, Eva Gibson, Pat Reynolds, Glenna Sliter, Elpis Apostolis, Marjorie Chard, Frances Henley, Betty Wagner, Doris Stewart, Florence Genocchio, Marion Hansen, Angie Lombardi, Gay Coey, Elsie Hansen, Cleo Primess, Ernestine Cuneo. Row Three: Helen Hofer, Edith Dailey, Jane Thaler, Elizabeth McCormick, Jean Hamilton, Abina Sullivan.*



*The Student Agatheans—"Students of Light"*

## Student Agathean

Student Agathean Club, meaning Students of Light, was formed about three years ago by a group of Christian students on the campus.

Regular meetings are held every Thursday at 11; special meetings have been held in various churches in the Bay area, and Bible Conferences are participated in. Tom Morgan was president.

## California Student Teachers Association

Junior Branch of the California Teachers Association is the Student Teachers Association, of which State has the first chapter. Under Helen Newell, fall semester president, the C.S.T.A. was host at a convention in Frederic Burk Auditorium at which students of over nine bay area colleges were guests. The Fall Executive Board consisted of Miss Newell, Melda Moore, secretary; Hal Garden, treasurer. Spring Executive members were Ted Wood, president; Phil Vail, vice-president; Jack Hulbert, treasurer, and Bertha Meagles, secretary. John Pichotto was publicity director for the year.



*Activities galore fills the college year . . .*

## MISCELLANY

Miscellany is the word for it—the numerous and varied activities of the students and clubs during the past year. Above we see Alex Edelstein addressing a sleepy Publications Dinner group, while the C.S.T.A. goes to a party in Frederic Burk Auditorium. Then the "Unholy Three", Benny MacMillan, Relfe Leavitt, Guido Fumigalli partake of the noon-day meal in front of Anderson Hall.

The screwball editors of the Franciscan clown

at photography with photographer Cameron, and an unknown couple enjoy themselves on the lawn in the privacy of the noon crowds. The Newman Dance committee go over plans for the money-losing formal.

News Guild Prexy Pat Casey addresses the same sleepy Publications gang, Peggy Smith, Dotty Foppiano, Marge Greer decorate the Xmas Jinks Tree. Dr. P. F. Fisk welcomes peace advocate Dr. Tully Knowles.

● *Sports*







● *Football*



## Coach Dick Boyle

Frustration, defeats, injuries—such was the prospect that awaited Coach Dick Boyle as he returned to take over the football helm at the college where he received his teaching credential, and he reaped a full harvest of all of them. Mediocre material, bad luck, recurring injuries—all combined to make his debut as coach of the Golden Tide the same as his material—mediocre. Looking for better luck this year was Boyle, white hope of the Golden Tide.

# The 1939 SEASON

## An Eye to the Future

January 7, 1929 was a memorable day in the history of San Francisco State College, for on that date the Registrar's Office officially announced that 17 men students had registered for the spring semester. Six months later, with no fanfare, no celebration, State's premier football coach took over the destinies of the newly organized Men's Athletic Department.

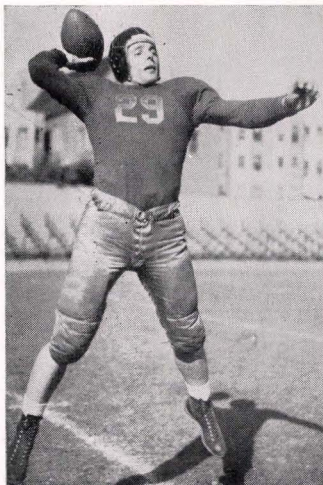
Two years passed, the men students multiplied tenfold, State gained recognition as equal to high school and college frosh teams in basketball, tennis, track, swimming—then the first football squad wearing the colors of the Golden Gaters trotted out on the figurative greensward of the Upper Field to lose to Lowell High School (3-0).

First touchdown in the history of a State football squad was made three games later when Cox-coached Ted Goldman crunched over from the 3-yard line for State's lone, lean tally in a 13-6 loss to Galileo's Lions.

A far cry it was from the days when D. J. Cox's Golden Gaters took consecutive beatings and ties from high school squads to the present—and



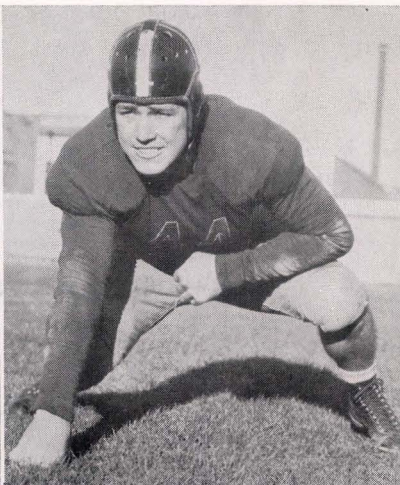
*Waiting to take to the practice field is the '39 Varsity . . .*



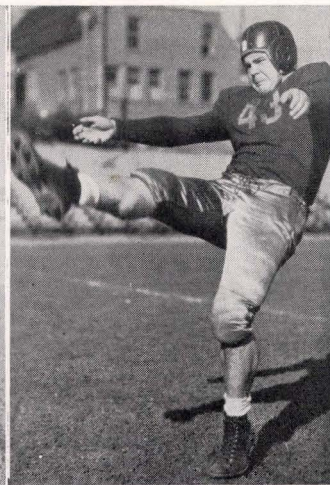
*Reade*



*Schiller*



*Swannack*



*Lowrie*

## The 1939 SEASON

Dick Boyle's precision-trained Golden Tide's last season against Humboldt, Nevada, Chico, Cal Aggies, Cal Poly—but the records of wins and losses show little improvement (1 win, 4 losses, 3 ties in '32—2 wins, 4 losses, 2 ties in '39).

An analytical study of Dick Boyle's debut as head mentor of the Tide's tactics shows that State's competitive ability has improved greatly in seven years, but the ability and power of the Tide's opponents has improved even faster. While in 1932 and 1933 State's grid squads were the equal of any State college and the peer of practically any high school or jaysee team, the 1939 squad stepped out of its class in tackling the selfsame squads it could whip in '32, had difficulty in beating jaysees, in tying state colleges. While all grades of college football were improving by leaps and bounds, State improved at a walk.

Tough luck set in at the beginning of the season for Boyle, when a long trip, injuries, and a temperature of 90 degrees at a high altitude (4431 ft.) combined to give the Nevada Wolves a win over the Golden Tide (13-6). Statemen Verducci and Stein found the Nevadans' only weak moment of the game, crashed over for 6 points in the closing seconds.

## Asst. Coach Kupfer

Caretaker, wet-nurse, and chaperone for the varsity last season was Assistant Coach Don Kupfer, newly arrived at the college. Besides assisting on the field of battle his duties included rounding up players for bed on all varsity trips. His smile attracted the girls; his duties repelled the players; his work was unheralded, thankless, indispensable.





*Schiller Scores . . . Marin 0, State 13 . . .*

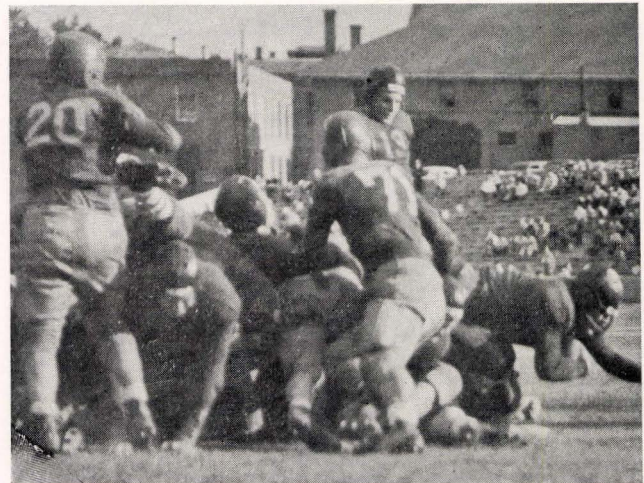
Five consecutive weeks without a single point scored and a last half 19-0 defeat by Essef Jaysee marked the end of the season. Following a first half in which State pushed the Rams all over the lot except the goal line, the Tide's opponents came to life, battered through for three touchdowns, one conversion.

Although he was handicapped by loss of players through injury and lack of reserve material, no excuses were offered for losses, no praise demanded for victories by Coach Bounding Dick, former "Blue Ghost" of St. Mary's Gaels. With an eye to the future, he spent the year enforcing training rules, discipline, developing secondary material, planning future strategy.

## The 1939 SEASON

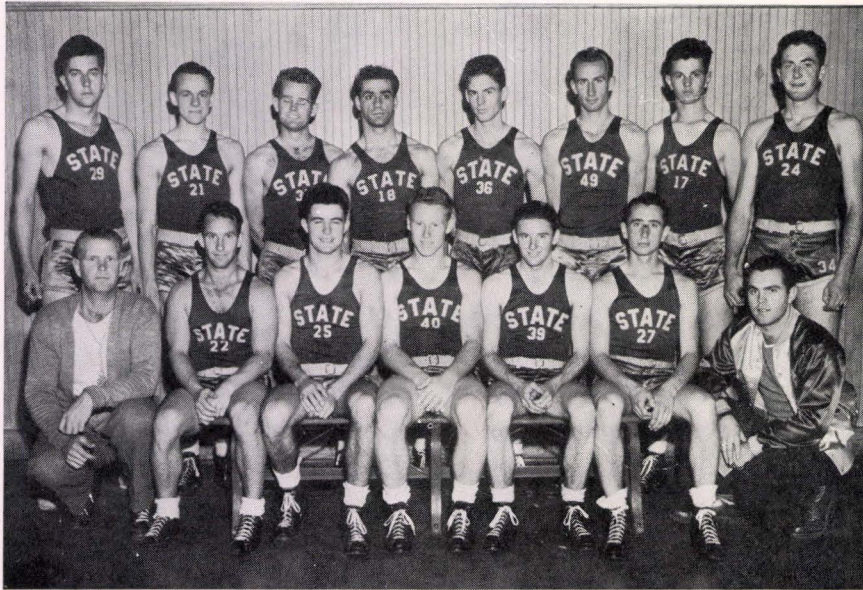
Loss to Nevada followed by only one week the opening game of the season, which had given State rooters high hopes with a 26-0 victory over Marin Jaysee. Sheer power in the form of plunges and passes by State backs Schiller, Lowrie, Reade, and linesmen Hanrahan, DeGhetaldi, Swannack, gave the Golden Tide their first victory in six years of competition with the Marin Bulldogs.

Nevada was immediately followed by a 19-12 photo-finish battle with San Mateo, a loss (7-0) to Cal Aggies, a scoreless tie with Chico State when a last-minute prayer-pass was muffed, a loss to Humboldt (19-0), and the second long trip of the season, Cal Poly and the accompanying excursion. Traveling rooters were entertained by watching a tired Tide receive a moral defeat by only garnering another scoreless tie with a weak Mustang outfit.



*Stein gains 6 points against Nevada . . .*

Track  
● Baseball  
Basketball



*The Varsity Basketball squad . . .*

## Basketball Season

What's in a name? Nothing that a little gargling won't cure and in our case, nothing but a record smashing, tradition crashing quintet from little San Francisco State College, who coordinated a possessive will to win to a shining star and finally merited its place in a prejudiced basketball firmament.

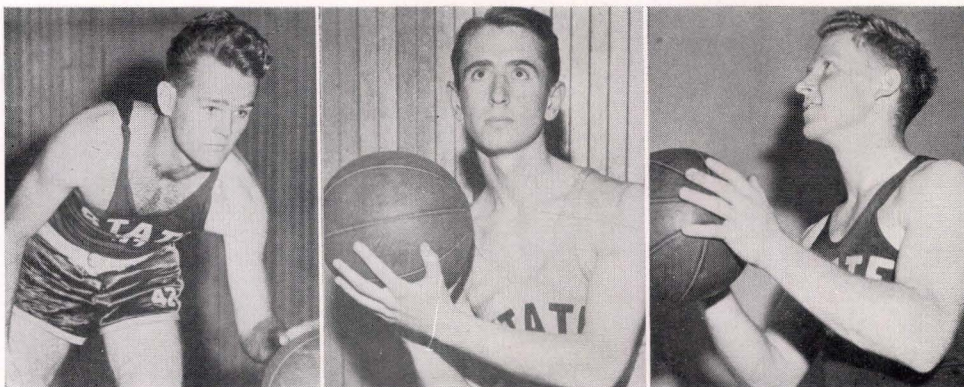
There was nothing in the name of San Francisco State College to strike terror into a foe; the teeth in that alligator's mouth would encounter difficulty in straining soup; the cavernous jaw was a mocking call to a full sized sparrow, until—

Little San Francisco State attached itself to its shining star, Thomas Collingwood, unleashed its electrifying fast break and with a

## Coach Dan Farmer

Hailed as the best basketball coach on the Pacific Coast for the last three years has been Coach Dan Farmer, hard-driving mentor of the Golden Tide hardwood quintet. High scoring varsities are his potentialities, "Break, suckers, break FAST!" his by-word. Victories are commonplace to him, defeats few.





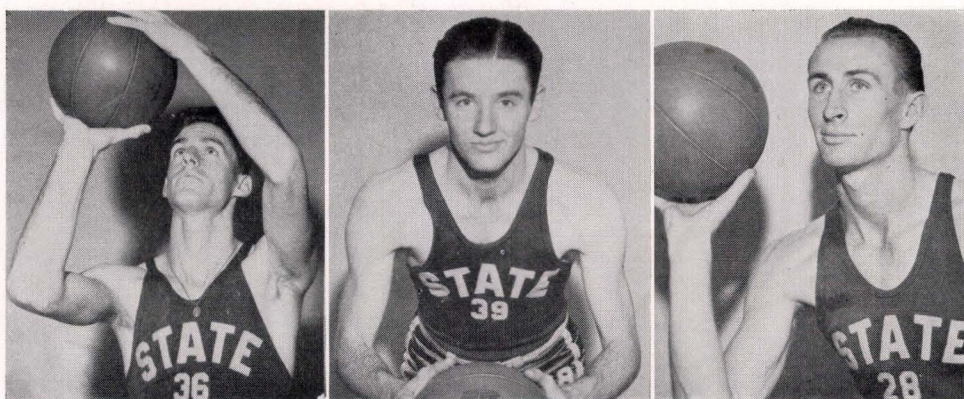
*Players Thayer, Fanfelle, Russell . . .*

couple of little shooting stars, Ernest Loustalot and Emil Fanfelle, swept to thirteen straight season victories.

Paradoxically enough, it was a victory starved Gael casaba crew from Moraga who curdled the victory brew, as on successive Tuesdays they inflicted crushing defeats. And true enough to State history St. Mary's, like other top teams before them, found their stride against State's little warriors, who suffered from the immemorial affliction, "Big Time Consciousness". And

like that famous salt, when it rained it poured, as Young Men's Institute, Chico, Santa Barbara State turned in upsets over stunned Staters.

But first meetings proved disastrous and somewhat conclusive to Chicoans and Santa Barbarans alike, as Dan Farmer's cagers swept on to victories in the series openers, and proved even more so to season foes. Final analysis showed eighteen victories against five defeats, saw two of those losses suffered in overtime thrillers.



*Players Kerwin, Loustalot, Collingwood . . .*



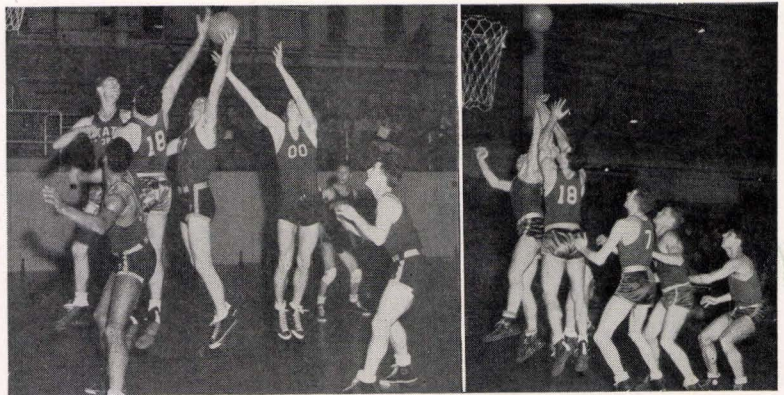
*Y.M.I. scores two . . . Loustalot helps fallen St. Mary's man*

And with the entrance at season's end into the Pacific Amateur Association Basketball Tournament, the on to Denver movement began, and though Staters lost again to Y.M.I. in four harrowing extra periods loyal students dug deep and sent them on to Denver.

But, unfortunately, first impressions in the plateau city proved lasting, Idaho Southern overcoming a ten point lead to send the Gaters back, snapping in defeat. Salvaged from the

Tourneys, however, was the gold watch award for high scorer in the P.A.A., star Collingwood romping to victory.

Season's resume saw Collingwood break Joe Sanz's scoring record of 261 points by dipping through 325, saw untirable Loustalot, Captain for the year, also break it with 275. Season's end faced a new total scoring record as 1331 points displaced the 1939 1146 total.



*State fights Humboldt for the ball . . . Gains two against Chico*



*Varsity baseball squad*

## The Horsehide Year

Baseball Coach Hal Harden had little trouble finding players to fill the three berths vacated by veterans Don McRitchie, Jessie "Spider" Turner and Dick Osborne. It was easier than sowing seeds in a windstorm.

Two newcomers from Mission High broke into the starting lineup. "Stubby" Ahern began working regularly at second base, while his prep teammate, Phil Stolz, patrolled left field, veteran Walt Lagomarsino shifted over to center field, Frank Grannucci rose from the utility ranks to gain the right field berth.

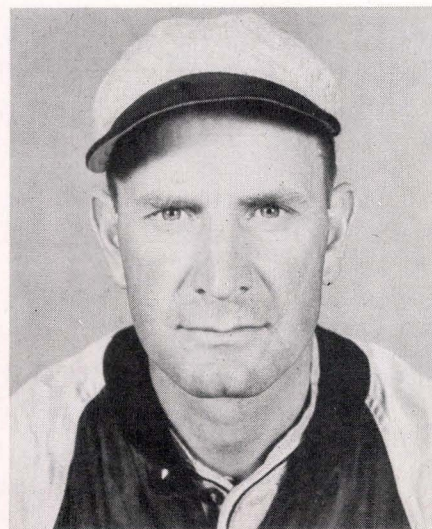
Last season's infield remained intact, with the exception of Ahern, second sacker. Bob Moore resumed the duties at first base, Jack Fischer at shortstop, and Dick Coshow at third base.

George "Red" Weekes and Charles Christianson handled the curves and fastballs at the plate, catching all the offerings of George Mailho, Carl Haas, Gene Bryant and Bob Kohout. Mailho and Haas were the only two veteran moundsmen, and the addition of Bryant and Kohout aided no little.

Faring badly in early season games, the Tide lost both to Santa Clara (13-8) and California

## Coach Hal Harden

Alternating good and bad baseball years has been the luck of Coach Hal Harden in his career as baseball mentor at State. Five years, 33-38, marked the longest record any State team has had in consistently winning. Few losses occurred to the team during those years, due to Harden's coaching. A glance at last year's records shows that the nine is now on the way to another such stretch.





*Players Christenson, Haas, Fischer, Ahern, Lagamarsino, Weeks, Kohout, Coshow, Moore*

(7-0). Carl Haas hurled the opener in the Cal Aggies series for the first victory. But the farmers found a weakness in George Mailho's delivery in the second game for five runs and a 5-1 victory.

Carl Haas turned in a fine pitching performance against Saint Mary's backed by the consistent hitting of Ahern, Lagomarsino, Moore, Fischer. Everybody was hitting that day! Dick Coshow, Charley Christianson and Bob Moore combined to drive across six runs in the fourth and fifth. Final score was 21-7 in favor of State!

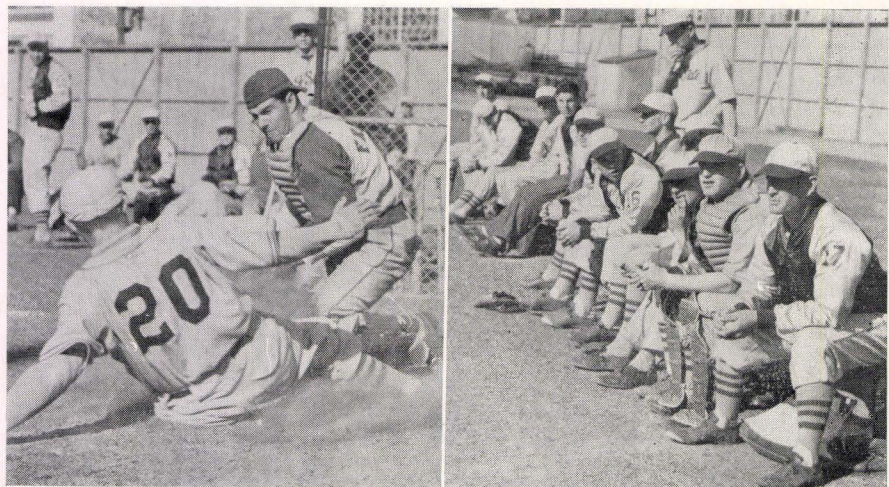
Another slump followed this victory, with the Tide losing to San Jose State, Santa Barbara

State. But San Mateo Junior College fell victim to the Tide's ill-humor in a two game series down the peninsula.

Bob Kohout allowed seven hits in the game against San Jose State, the Gaters connected for eight to win 3-2. Bob Moore paced the team with two triples.

Gene Bryant turned in his best performance against Santa Clara and Cal Aggies. But both times he was relief pitcher, and his six hitless innings failed to gain victory.

Les Swanson, Dick Webster and Pete Mirande, all new players, gained considerable experience. Coach Harden has his eye on rookie Pete Mirande and 1941.



*Fischer slides while the squad watches from the bench*



*Varsity cinder squad*

## Along The Cinder Path

It was a perfect season for the thin-clad cinder-burners of the Golden Tide this year—until George Otis, Coach Cox's 1940 variety of iron man, pulled a leg muscle in the next to the last meet, was lost for the last, deprived the Tide of the 8 points they needed to win the meet.

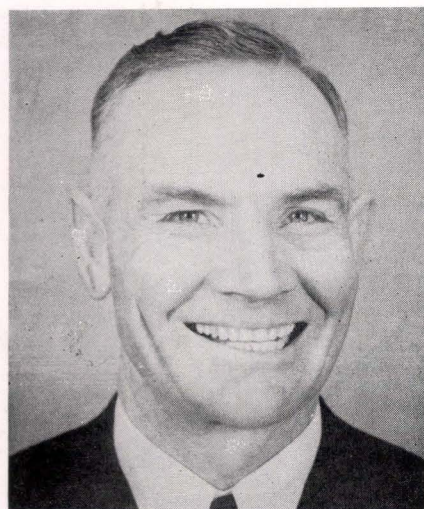
Otis, who averaged well over 10 points per meet for the season would have been just the point-tonic needed to scrape together the extra 8 points necessary to beat C.O.P. in this first time in over five years that State had met a Pacific team.

With the exception of the C.O.P. meet, the season was perfect for State. Opening the season with a 90-39 triumph over the Alumni, the Tide continued to rise, winning three meets by over 50 points, nosing out Cal Aggies (69-62), dumping Chico 70-61.

Buffeted by a high wind, handicapped by lack

## Coach Dave Cox

Hard-bitten, military appearing Dave Cox shows his army training in the rigid rules and practices he forces upon his athletes. And his cinder stars show it. Few Pacific Coast teams have the strength and stamina of the Golden Tide tracksters, although many can trounce the team. If you hear someone yell, "Get up and run it off!"—that's Cox. Once coach of all men's sports on the campus, he now devotes full time to Dean of Men's duties, part time to track teams; would like to coach everything again.





*Tracksters Otis, Kline, Parker, Crane in action*

of conditioning, the Tide turned in poor times and marks for the Alumni opener. The Alumni, led by Ray Allee and All-time State Iron man Ru Stone, won first place in four events, with regulars winning all other first place positions. Regular winners were Fred Kline in the distance, Goettels in the dashes, Schwab in the 880, Carolan in the mile, Sheppard and Schultz in the hurdles.

Records were left littering the greensward of Kezar Stadium the next week, following the Cal Aggie win of the Tide. Handicapped by absence of Otis, the Tide garnered on 69 points

to the Aggie 62. Meet records were broken by Kline, Rhodes (A), Parker.

Ensuing weeks saw the Tide, led by Otis, Crane, Schultz, Parker, Schwab, Kline, Pantages, Hodgins, defeat successively Chico, Humboldt, S.F.J.C. All of these meets were won by at least 11 points (*Chico*, 70-61; *Humboldt*, 99-31; *J.C.*, 90-31).

Despite the tragedy that struck deep into the Tide's records for the year, Coach Dave Cox is looking forward to an even more successful season next year. One thing of the season remains—Coach Cox has again proven himself *Maker of Iron Men!*



*Cross-country, Pantages, Stein, Kline in action*

● *Jayvees*



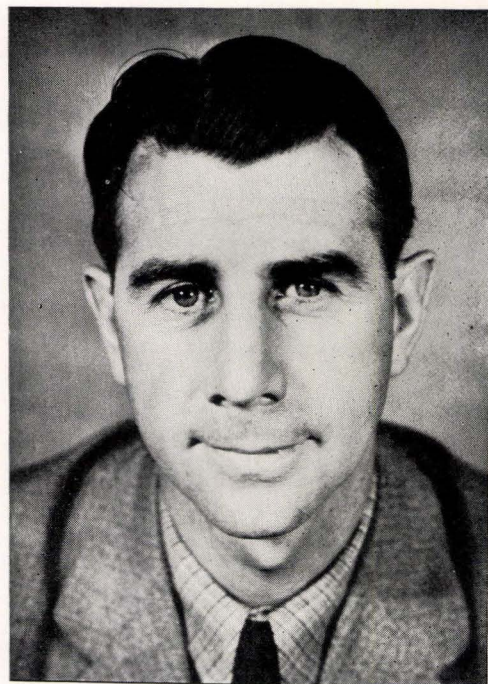
*Jayvee Basketball Squad*

## Jayvee Basketball

The first job assigned Coach Dick Boyle on his advent to San Francisco State as the newest addition to the coaching staff in 1938 was the job of coaching 145 lb. basketball. His first season was moderately successful, the record he set in the season just passed stands as one of the best yet in the annals of 45's basketball.

Sixteen wins, five losses is the record of the 45's for the season, with victories over Mission High, Sacred Heart, St. Mary's frosh, Hayes Valley A.C., George Washington High, Fort Bragg High, Olympic Club 45's.

Outstanding players were Young, Wang, Steinbach, Peterson, Harriman, Ferguson, Edelstein, Fredericson, Stolz, Margolyn, Wolfe. Young and Harriman were the only regulars throughout the entire year. The team was well balanced, considering the fact that eleven men played first string at times during the season.



COACH DICK BOYLE  
*Basketball as well as football*



*Jayvee football squad*

# Jayvee Football

Coach Tom Bragg had never enjoyed sweet success until the 1939 edition of the Junior Varsity gridders came under his spell. Bragg got his first thrill when he was greeted by 35 men at the beginning of the season, a number hitherto unheard of previously when the call for Jayvee footballers went out. Of the 35, only six men could be called experienced—Dick Webster, Denny Ruth, Guido Fumigalli, Fred Bender, Warren Mallick, Archie Steinbach. Using these men as a nucleus, Bragg proceeded to whip out a first-rate squad wearing new uniforms featuring white and purple jerseys.

First victim on the Jayvee "murderer's" list was Lowell High School, who succumbed to the

tune of 30-0. Inspired, State's Jayvees next tumbled over the Bayview Athletic Club, 7-0. Two more games were captured against San Francisco high schools (*Sacred Heart* 20-0, *Commerce High* 12-0).

The inevitable let-up came at this point as the highly favored Tide tasted defeat against Mission High School. Mission proved the nemesis of season, spilled an otherwise perfect record by winning 18-0. Ending the season gloriously, the Jayvees swamped St. Ignatius 25-0, tied S.F.J.C. (0-0). Five wins, 1 tie, and 1 loss was the record posted by the Gaters as a mark to shoot for next season, the new Golden Tidelet record.



*Varsity soccer men*

# SOCCER

Prediction last year that State would have a soccer team came true in the fall as Dean David Cox appointed former Don Gerald Kenny as Coach. Kenny gathered in over 20 enthusiasts, elected John Finn captain, diligently put his neophytes through gruelling practice — and tough opponents.

Kenny wisely scheduled three local high school games before tackling intercollegiate opponents and ended up with two wins against one loss. Galileo was first to succumb 2-0, Balboa was dumped 1-0, while Commerce surprised with a 3-2 win.

Boldly venturing out, the State Soccerites amazed by trouncing the Rams from San Francisco Junior College by the lopsided score of 4-0. State seemed on the road to prominence and the following week found them consistent by taking the nod from San Mateo Junior College with a 1-0 score.

Hard luck, difficult trips, inability of some of the boys to play, combined to start the team on the down-grade. Five successive losses, two at the hands of USF, two by the Cal Aggies, one by San Jose State followed.



*Stater kicks a hard one*



COACH LEN DUCKWORTH  
*Foiled other varsities*

# FENCING

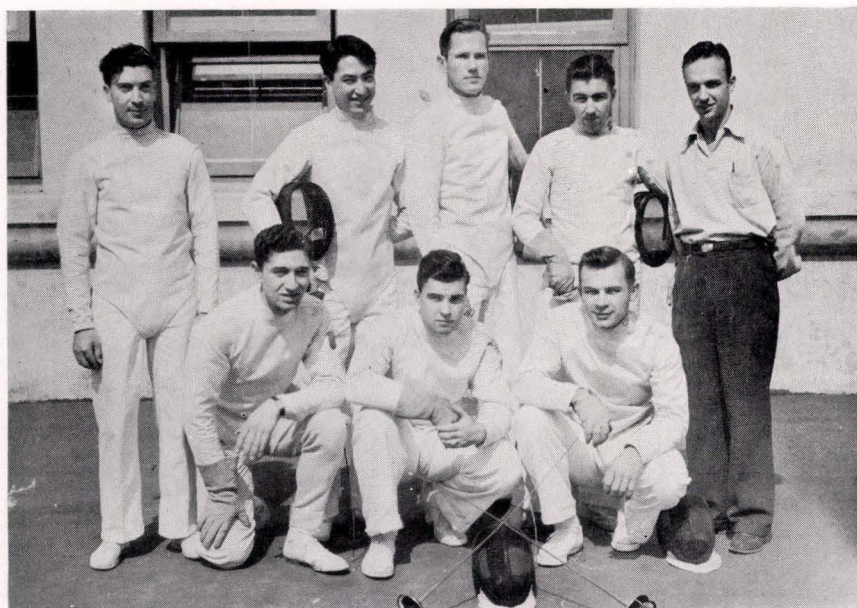
One year ago only three men, one woman, answered Leonard J. Duckworth's clarion call for students to study the art of fencing. Today over fifty persons are engaged in State's newest sport.

The men's team, coached by Duckworth, is undefeated to date. Season opener was a victory over the strong Stanford squad (13-12). Next victim was San Jose State, who fell 19-1. Various local clubs have felt the swathing cut inflicted by State's varsity.

Varsity fencers are Vic Vari, Bob Lee, Wally Twichell, John Tilden, Norman Spicer, Ray Dasmann.

Next fall the squad joins the State College Conference, with warm-up matches slated for the National Intercollegiate Championships on Treasure Island this summer.

Fencing is here to stay. The interest shown, plus an excellent record and turnout, has insured permanency on the campus.



*Effective saber, foil wielders, the varsity fencers*



*Varsity swim team members*

## Swimming

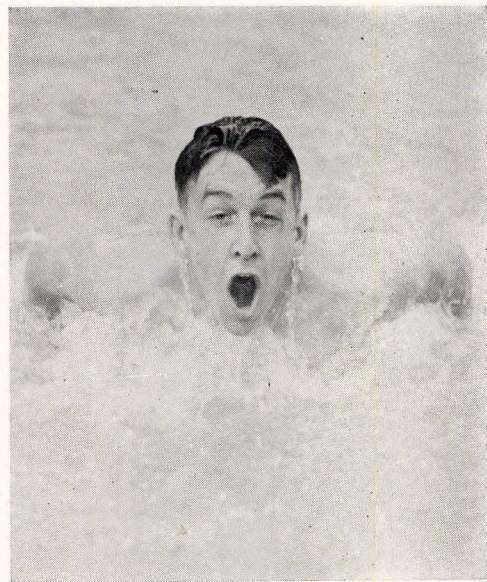
With a lone defeat by a strong California squad to mar their record, the State swimming squad lay claim to a successful season.

Coach Harden's mermen opened their season on February 10 with an easy 41 to 33 win over the California freshmen swimmers. They followed this up a week later by eking out a victory over a favorite Stanford frosh (38-36).

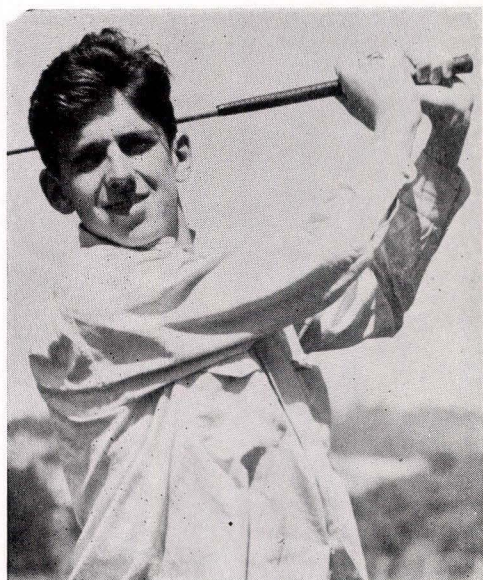
The Staters took a two week lay-off and then journeyed once more to Berkeley, to take on the California varsity. This resulted in their first and only setback of the season.

Getting back into stride the Gaters concluded their season by drubbing Menlo J.C. 47-12, taking Cal Poly and Santa Maria A.C. in a triangular meet. The latter meet score was State 43, Santa Maria 32½, Cal Poly 12½.

Members of the team were John Haake, Bob Keller, Hal Keller, Howard Hall, Jack Gilkey, Dave DuBoise, Werner Steinback, Bruce MacDonald, Bob Buckley, Art Campos.



*Number one man Haag*



*Number one golfer Manning*

## Divot Diggers

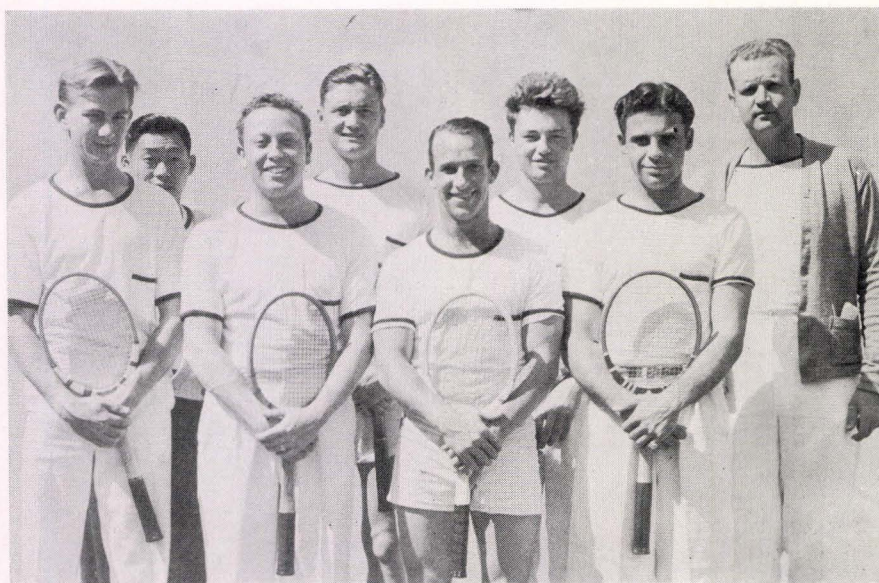
Under the guiding eyes of student coach Harry Robey and Manager Harold Martin, State's golfsters have blazed a trail of victories during the past year boosting this newcomer to State sports as a winner.

Victories over such strong teams as San Jose State, Cal Aggies, Marin J.C., and local club squads featured the year. Intercollegiate matches have been arranged with San Mateo J.C., San Francisco J.C., California, Sacramento J.C., University of San Francisco, Olympic Club.

Veterans reporting for the team beside Robey were Ru Stone, Bob Robinson, Don Liggaretto. Other divot-diggers are: Gordon Mailleux, Earl Howard, Bob Zamloch, Bob Marrion, Charles Manning, Jim Eaton.



*Harold Martin's golfing proteges*



*Consistently winning tennis squad*

## Racket Wielding

Tennis has been fortunate at State College for a number of years since it is one sport where top-ranking players enroll. This year Coach Dan Farmer was recipient of the number eight ranking player in the state . . . Harold Wagner. On the roster were Jack Witt, runner-up in the city-wide tournament, Ed Kohlauf, veterans Ken Kim, Bill Hammond, Ron Lindlow. Newcomers were Joe Lang, Ted Eschwig, George Tucher, Don Blumgren.

The season started conspicuously with four straight victories over San Mateo J.C., Santa Clara, Cal Aggies, San Jose State. The downfall came against San Francisco J.C. with the Rams taking the nod (7-2). Minus the services of Ken Kim and Jack Witte, the Tide bowed to Stanford by a similar score, 7-2. Seeing red, Staters trounced St. Mary's twice by the same score, 9-0, bowled over Santa Clara 6-3. At this writing, Farmer has many more games scheduled, and we may be sure they will win all or most of them.



*Number one racket wielder Wagner*

## Boxing

Fist-fighting was considered vulgar in the Gay Nineties, when even professional fighting was outlawed in many States, but the fine and manly art of self defense has finally reached the realms of sophistication and acceptance by adherents to higher education.

Eight men answered the call to arms early in the Fall semester, 1939, joined the newly formed State boxing team. From this nucleus, Coach Don Kupfer built a strong squad that met squads from U.S.F., San Jose State, Santa Clara, Moffat Field, Hoopa Indians, local boxing clubs.

Among boxers featured on the State programs were Mario Machi, Guy Swannack, Dave Schiller, Fadie Booker, Dick Montgomery, Dick Chinn, Frank Pope, Ernie Leydecker, Craig Gaffney, Carl Magaran, Phil Rodman, Dave Risling, Ted Press.

## Cross Country

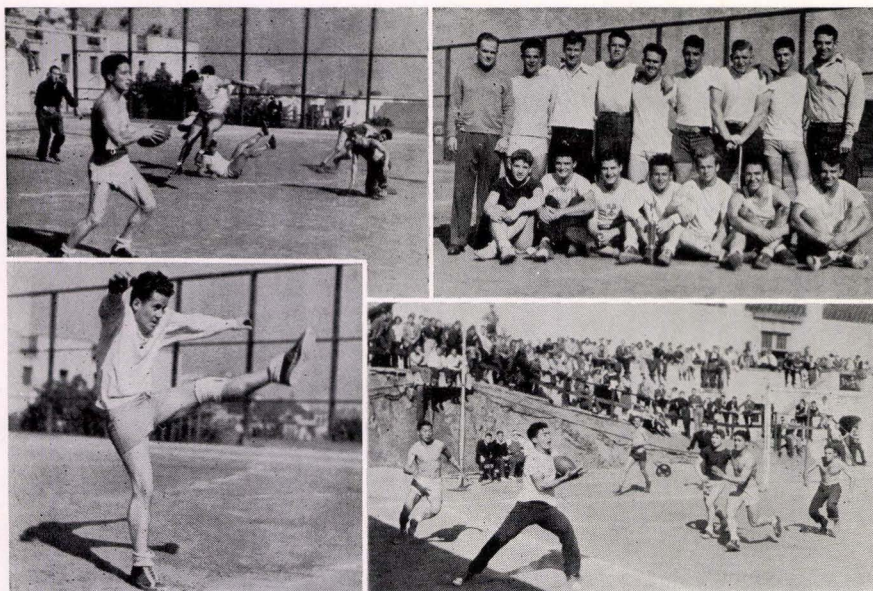
State ventured into a new sport this year in cross-country. Marcus Davis, member of the varsity tracksters, started the movement, scheduled meets with the Olympic Club, University of California, Y.M.C.A., San Mateo J.C. and several city high schools.

With Marc Davis acting as coach, manager, trainer, and participant, the team was made up of John Carolan, Dick Schwab, Fred Kline, Aubrey Wendling, Rolfe Leavitt.

First warm-up competition was Commerce and Lowell high schools. Fred Kline won against Commerce, was closely followed by Schwab and Davis. The Lowell meet was another easy victory for the Gaters, with John Carolan taking a very close second to Gene Clarke of Lowell, one of the finest cross-country men in the bay region.

Came the real test as State tangled with San Mateo Junior College. John Carolan came through with flying colors by leading the field and tying the course record set by Cecil Cole, Pacific Coast champion.

The season ended with Carolan and Davis running the nine-mile Senior P.A. race in Golden Gate Park. Hopes are high for the future, as only Kline and Leavitt leave the squad.



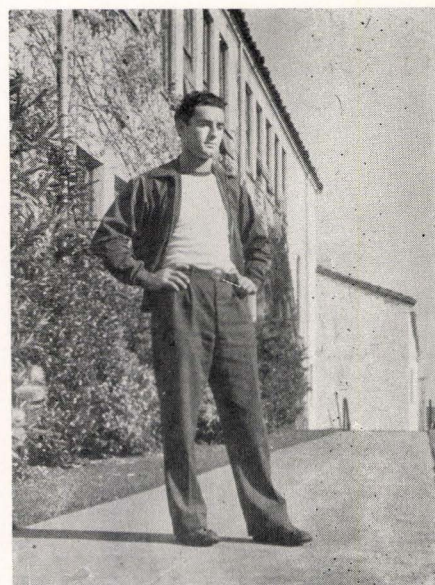
*Intramural football won by S.P.S.*

# Intramural

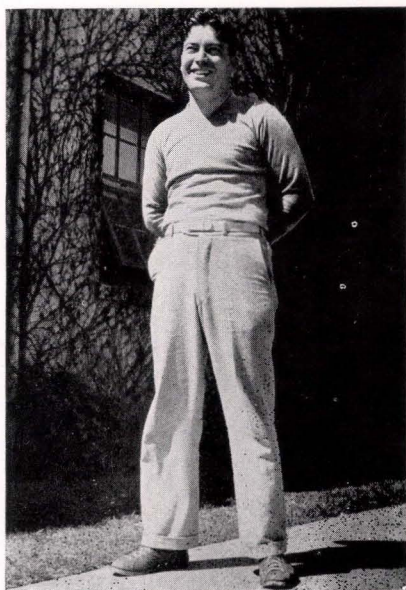
Featured by greater student participation and addition of new activities, Intramural Athletics last year continued the popularity which it has enjoyed during the last two years. Don Kupfer, newly-acquired coach, replaced Dan Farmer as Director of Intramural Athletics. Another change was the appointment of an Intramural Board by Manager John Pichotto to assist him in the increasing duties. Kupfer became advisor, Pichotto chairman of the Board which is made up of Saul Simon, Tom Collingwood, George Weekes, Frank Jackson, Marcus Davis.

Intramural Football held the spotlight last Fall with 30 teams participating. The finals saw Sigma Pi Sigma and the Muscle-men clashing in a game which attracted hundreds of spectators. The Sigma fraternity boys won the title by a score of 9-7. Don McRitchie booted a field goal in the last minute of play to cinch victory.

Football Olympics was the next attraction. Tom Collingwood won the Punt For Distance



MANAGER JOHN PICHOTTO  
*Two years of intramurals*

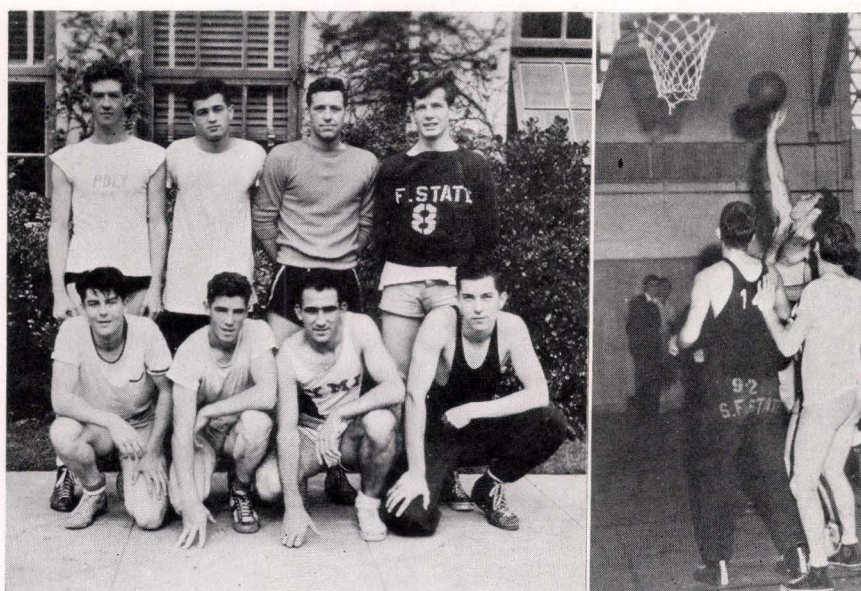


DIRECTOR DON KUPFER  
*First year at State*

trophy with a boot of 62 yards, Walt Learner was second, Craig Gaffney, third. In the Place-Kick for Accuracy, Herb Platt took the title with Bill Clark second and John Pichotto in third spot. Stan Lefcourt copped first in the Throw For Distance with a toss of 63 yards. In second place was Pete Perry with Jack Fischer, third.

Sixteen squads turned out for the next attraction—basketball. After keen competition, four teams remained . . . Playground Directors, Outcasts, Sigma Pi Sigma, Muscle-Men. Meeting in the finals which attracted hundreds of spectators were the Outcasts and Muscle-Men. The Outcasts, sponsored by Dr. Hacker, emerged victorious (27-21). On the winning side were Neil Harriman, Phil Stolz, Carl Gustafson, Gene Bryant, Pete Perry, Bob Hodgins.

Initiated by Intramural Board member Marcus Davis, the Five-Day Marathon took place next on the upper field. Runners ran daily and points were tabulated. Finals saw the team of Arno Berruto and Leo Coulson cop the title, with Dubois-Wendling team close behind, Zamloch-Meier taking third. Also finishing were the



*The Outcasts emerge champions . . .*



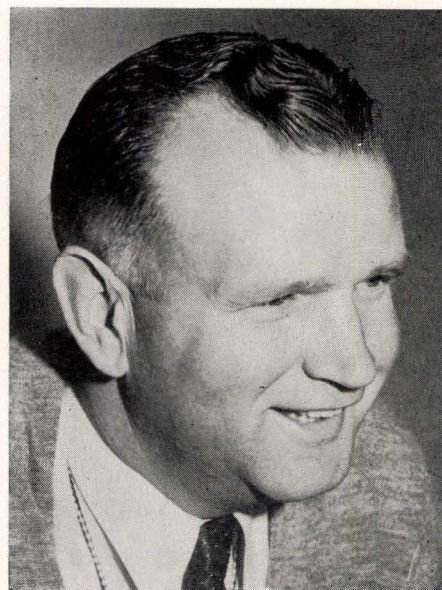
*Old Men's A.C. captures net trophy . . .*

teams of Lowrie-Goettels, Grantham-Bareilles, Lorin-Mirande, Pivnick-Goria, Gaffney-Davis.

Coach Kupfer called for volleyball entries, and 18 teams responded. After lengthy competition, the Old Men's Athletic Club met the Phi Epsilon Mu squad in the finals, which saw the O.M.A.C. win its first intramural athletic trophy by trouncing the Phi Ep's (30-21). Tom Collingwood captained the winning team of Jack Wolf, Ernie Loustalot, Herb Platt, Cliff Nelson, Wally Young, Bob Russell, Harvey Glassenberg, Dan Rubin, George Thayer.

At this writing 20 teams are battling for the Softball title, with strong favorites in the O.M. A.C., Newman Club, Publications, Dusky Diamonders.

The future for intramural athletics here at State looks bright, and Director Kupfer feels confident that it will be running smoothly when the new campus is ready for occupation. After two years of difficult, but effective work, Manager John Pichotto will step out of the picture. Next year Phi Epsilon Mu, mens' P.E. fraternity, will conduct intramural athletics.



**DIRECTOR DAN FARMER**  
*Six months head of intramural*



*Officers of the W.A.A.*

# Women's Athletic Association

Streamlined in the modern mode are the policies of the new W.A.A. Council for the college. With the objective of establishing some physical educational activity for every woman of the college, new activities were added during the year, intercollegiate competition was started in fencing, hockey, softball, basketball, soccer.

The new policy of the W.A.A. was carried out last year by President Bobbe Sandeen, Vice-President Lucille Murphy (Fall), Vice-President Jo Biggi (Spring), Secretary Mary Jo Spaulding, Treasurer Florence Abraham.

Under the new constitution of the Association, the managers for all sports were elected by

members of the groups rather than appointed by the W.A.A. Board. Fall managers were Lucille Henry, hockey; Marian Bassett, volleyball; Janna Van Der Wall, tennis; Jean Madison, archery; June Meese, softball; Margaret Wormell, basketball; Dorothy Thronson, badminton; Bernice Cook, ice-skating. Fencing and Kappa Delta Tau (dancing) are activities carried out for the entire year. Managers were Inez Ericson and Jean Van Arsdale, respectively.

Besides sports for women only the W.A.A. sponsors noon day recreation, co-educational play-days for State and Jaysee students. Presidents of the organization for over 15 years were present at the annual awards dinner of the organization in the Aquatic Park Casino.



*Fencers go to it!*

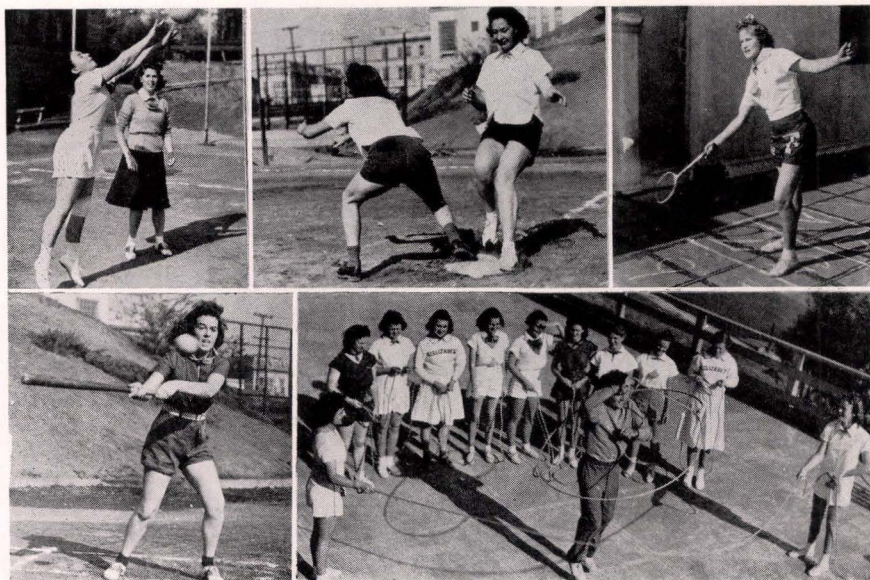
## Women's Fencing

Newest addition to the numerous sports of the Women's Athletic Association is women's fencing. Under Coach Len Duckworth, the women of the fencing team spent the year in intramural matches, practicing, training for an active 1940-1941 season of competition with Mills College, San Jose State, Stanford, California, College of Pacific.

Twelve women were members of the 1939-1940 varsity, which met no intercollegiate opponents, but practiced in matches with the men's squads, gave exhibition matches for the entertainment of the students. Manager for the year was Inez Ericson.



*Women's fencing squad*



*High school girls play ball, spin ropes . . .*

## High School Playday

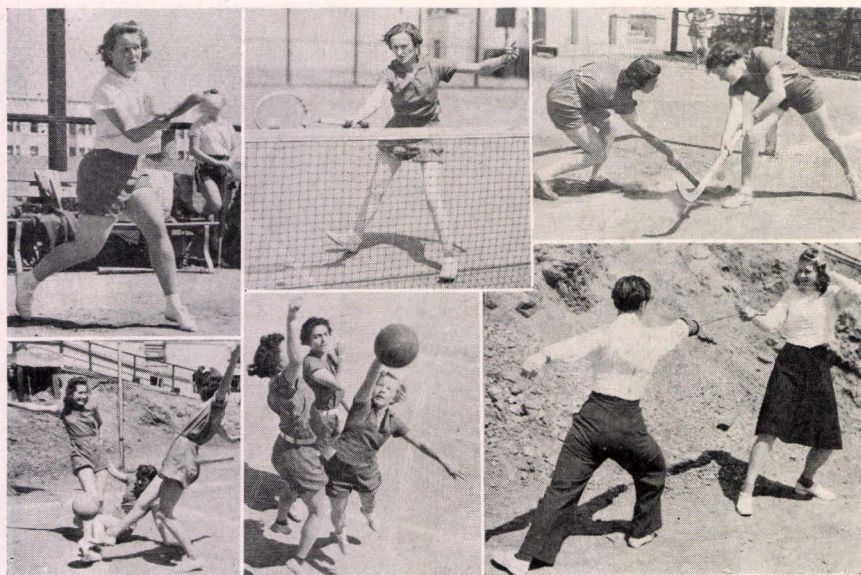
An advertisement for the college as well as for the Women's Athletic Association is the annual high school girls' playday held on the campus in the fall semester.

Athletically inclined girls from each high school in the bay area are invited to attend the annual festivities, and several hundred are entertained by games, dancing, luncheon.

Games played are tennis, volleyball, basketball, badminton, baseball, rope-twirling. Further entertainment is provided by the W.A.A. and the P.E. Club.



MANAGER BOBBE SANDEEN  
*Twice manager—twice president*



*W.A.A. features ball games, fencing . . .*

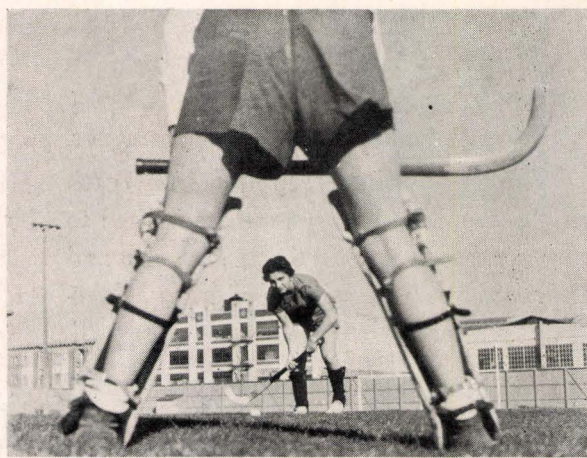
## WOMEN'S SPORTS

Intramural sports for women on a large scale made their first appearance on the State campus last year under the auspices of the W.A.A.

Intramural contests were held in softball, basketball, hockey, soccer, badminton. Two new activities, ice-skating and fencing, though not yet added to intramural activities, are expected to become part of the intramural program next year.

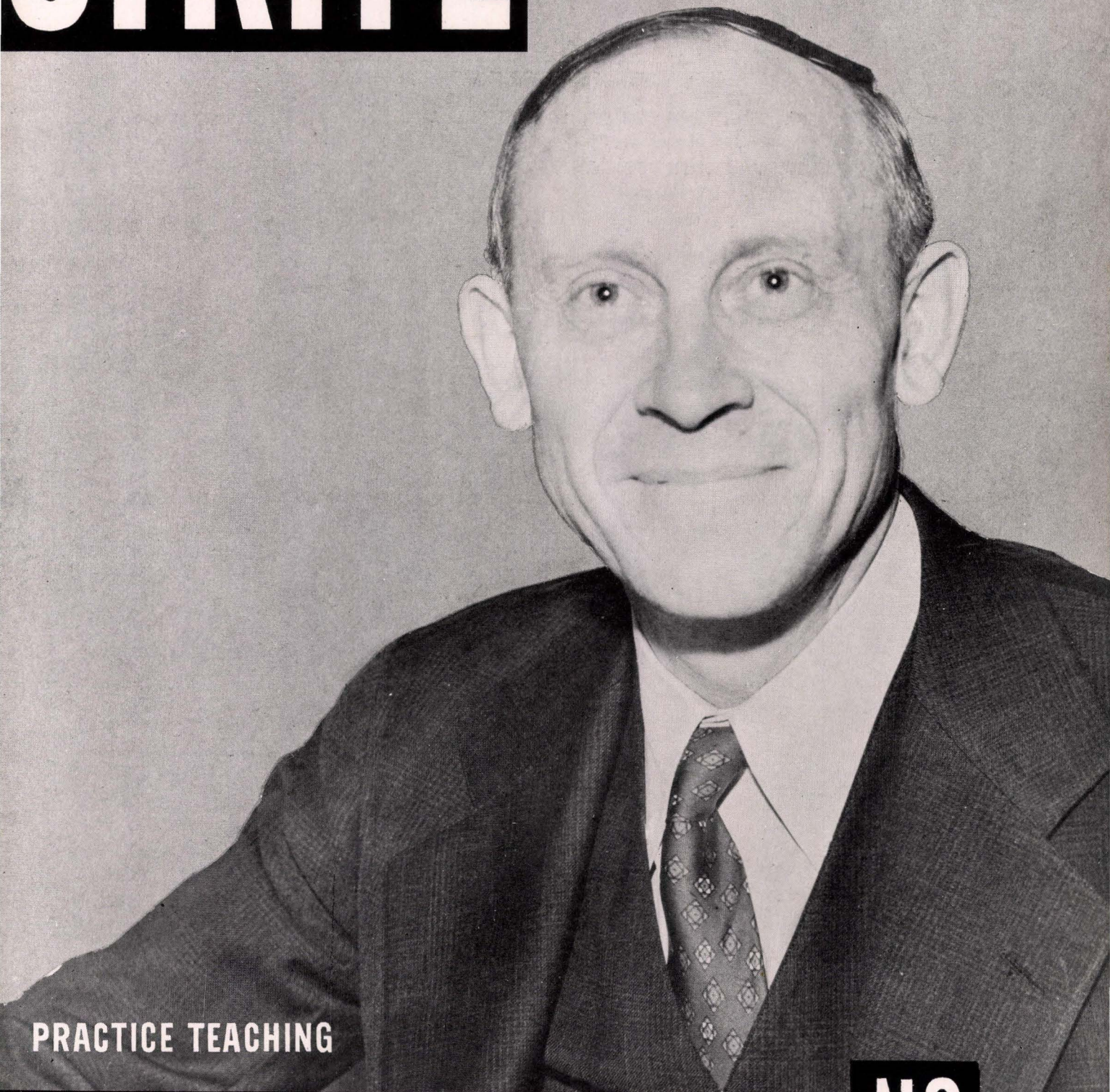
Intercollegiate competition for women's teams also made their debut for the Association with softball teams meeting San Francisco Junior College, winning 1-0, and women's and co-educational playdays with Jaysee and State students participating.

Next year the W.A.A. expects to enlarge its already large program under the direction of its sponsor, Mrs. Florence Hale Stephenson.



JOSEPHINE BIGGI  
*Drives a hard one at goalie.*

# STRIFE



PRACTICE TEACHING

MAY 15, 1940

**NO** SENSE

# GRANAT BROS.

. . . largest establishment in America engaged in the combined business of creating, manufacturing, wholesaling and retailing engagement rings, wedding rings and fine watch cases.



## MISSION AT TWENTIETH

Grant at Geary  
SAN FRANCISCO

Broadway at Nineteenth  
OAKLAND

## CREATORS OF DISTINCTIVE BUDGET ANNUALS

- ATTRACTIVE LAY-OUTS
- QUALITY ENGRAVINGS
- PURPOSEFUL ART WORK
- EXPERT SERVICING

Represented

by

RICHARD BENSON

PHOTO ART ENGRAVING

211 STEVENSON STREET

SAN FRANCISCO

- PLEASING TYPOGRAPHY
- FAITHFUL PRINTING
- DURABLE BINDINGS
- NOVEL COVERS

Represented

by

AL ANDERSON

OSBORNE PRINTING CO.

30 PINE STREET

SAN FRANCISCO

I  
F  
I  
T'S  
BORDEN'S  
DAIRY DELIVERY  
MILK OR CREAM  
I  
T'S  
G  
O  
T  
O  
B E G O O D



*Duchess*  
SANDWICH CO.

LET US HELP YOU  
PLAN YOUR NEXT  
PARTY

Prospect 2131

# STRIFE

Vol. 0, No. 1

May 15, 1940

State Wins Building Strife.....	126
Olson Signs Campus Bill.....	127
Earthquake Razes State Campus..	128
Campus Ground is Broken.....	129
Work Begins .....	129
State Students Practice Teach....	130
State Reaches New High in Registration.....	132
Cleaning Up.....	135
The End .....	136

Editorial and Advertising Offices:  
124 Buchanan St. San Francisco

EDITOR: Ernest Miguel  
PHOTOGRAPHS: Harold Martin

MISS SAYLOR'S  
UNUSUAL  
CHOCOLATES

Distributed  
by

B. MIRSKY & SON  
468 Third Street

## Teacher Placement

We offer  
efficient and discriminating  
placement service for  
California Teachers

## KEMP AGENCY

Established 1909

J. M. KEMP, Manager  
681 Market St., San Francisco

All Portraits for

THE 1940  
FRANCISCAN

Were taken by

The  
RETLAW  
Camera Shop

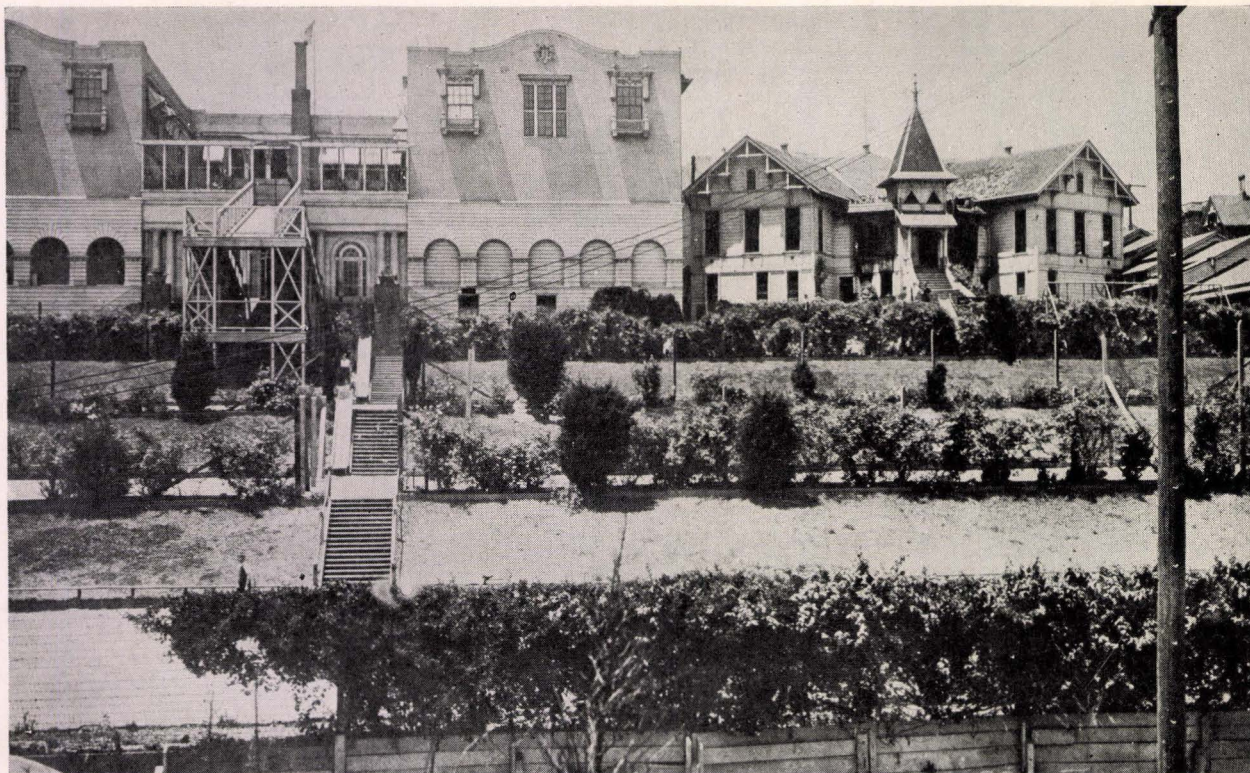
3856 24th Street

CAMERA EQUIPMENT

For

All Occasions

Special Rates for State Students



FIRES ON THE CAMPUS began early, when, on April 17, 1915, the old Administration Building on Waller Street was damaged by flames.

## STATE WINS BUILDING STRIFE

**S**AN FRANCISCO STATE had a beautiful campus in 1915. Beautiful, rolling lawns, terraced grounds, a college building above standard for those times, and a spacious old church building for administration offices gave the old San Francisco Normal School adequate grounds and room for the 500 students in attendance.

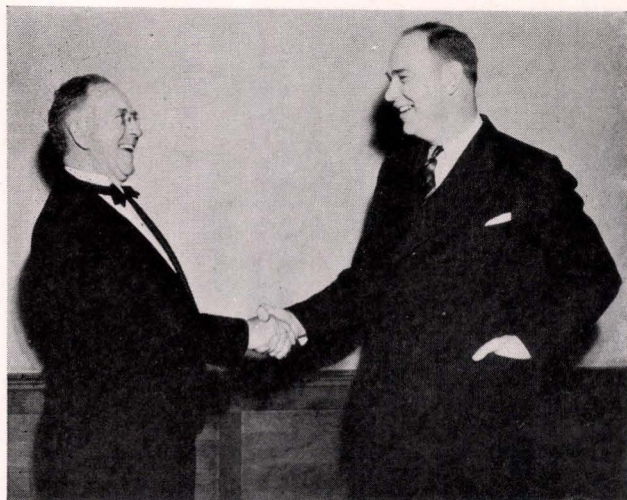
A fire in the church-administration building on April 17, 1915 (*see picture above*), started a series of fires that led to a 15 year fight starting in 1925 for a more adequate campus for

the rapidly growing institution. The old administration building was razed in 1928, Anderson Hall built in 1928, Frederic Burk in 1932, yet the campus became more and more inadequate.

Twelve years of fighting by student officers, faculty members, city fathers, proved worthless until Senator John F. Shelley took over the battle in 1939, when the long, hard struggle was finally culminated with victory—and Governor Olson signed a bill granting the college a \$1,500,000 campus near Lake Merced.



GOVERNOR CULBERT L. OLSON signs the bill which allots \$1,500,000 to State for a 65 acre campus in Ingleside, bordering Lake Merced, as Dr. Alexander C. Roberts (right) and Senator Jack Shelley (left) watch.

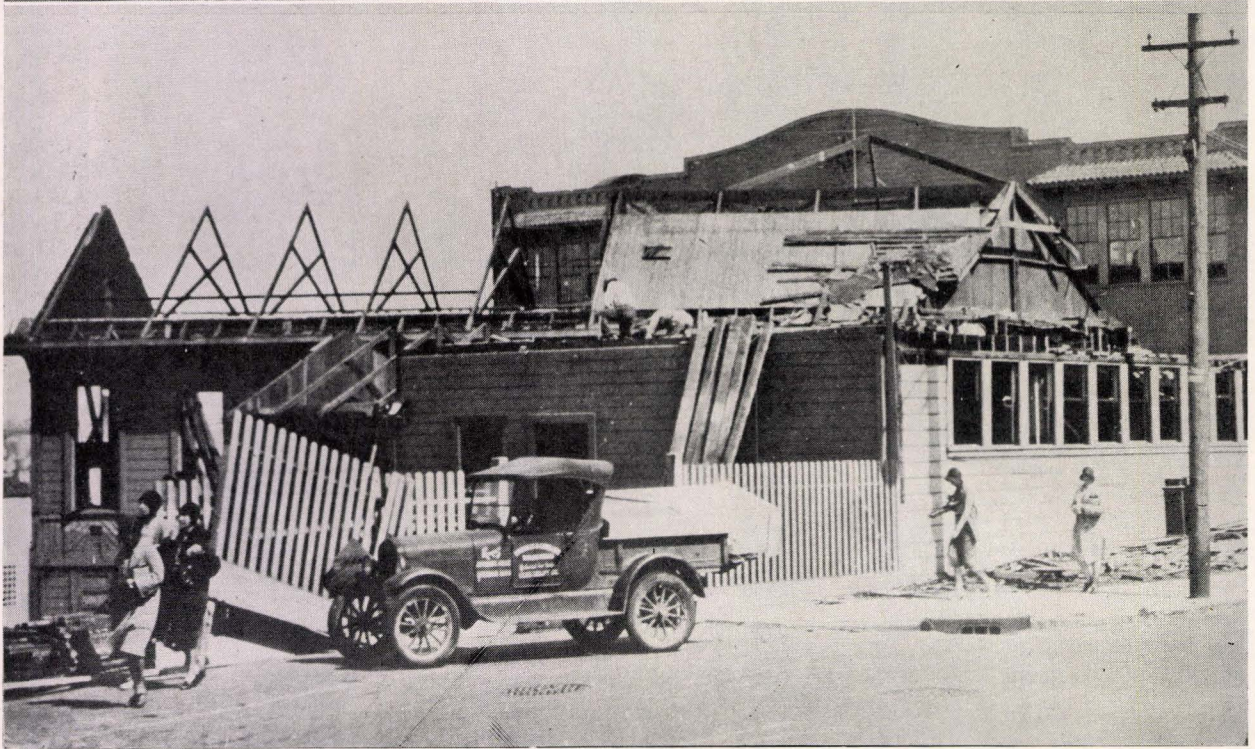


ROBERTS AND SHELLEY congratulate on building and campus victory in the Legislature.

## OLSON SIGNS BILL

**C**LIMAX OF STATE'S fifteen year battle for adequate buildings and campus came when, on July 15, 1939, Governor Olson signed the bill giving the college the new Lake Merced site.

The site was selected after consideration of the possibilities of enlarging on the present campus, moving to Calvary Cemetery, combining with S.F.J.C. Work began on April 1, 1940, will probably be completed in late 1941. Low-lying, Spanish style buildings will probably be featured.



THE HOME OF SAN FRANCISCO NORMAL SCHOOL lies in ruins after the fire and earthquake of 1906.

**M**OST of San Francisco was ruined in the great earthquake and fire of 1906. Among the hundreds of buildings destroyed by the catastrophe was the home of San Francisco Normal School on Powell Street (*above*).

Immediately following the fire, headquarters of the school were moved to San Jose, became San Jose Normal School, and later San Jose State. Reconstruction saw the rise of what is now College Hall on Buchanan and Hermann

Streets. The administration building of the college was an old church sold to the state for the college.

Waller Street, then running through the present campus, marked the boundary. With the appointment of Dr. Roberts of Washington to the presidency of the college, the administration building was torn down (*above*), the street was closed, and Anderson Hall was constructed on the extension of the campus.



N.Y.A. WORK BEGINS on new campus. Crowds watch ground-breaking ceremonies.

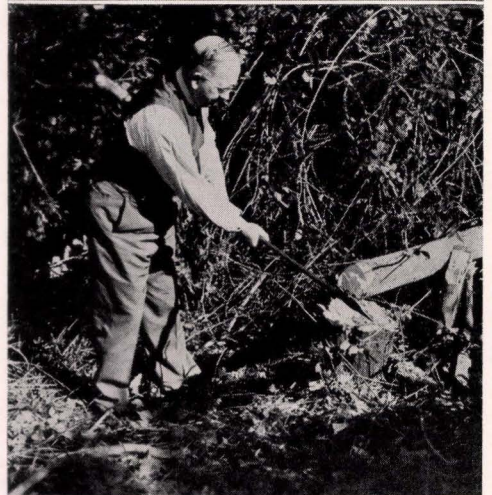
## GROUND IS BROKEN ON NEW CAMPUS

**B**IGGEST celebration in many a year for San Francisco State students was the official ground-breaking ceremony on the new campus site at Ingleside.

A combined pre-jaysee game rally and ground-breaking ceremony, the day's affair attracted over one thousand State students, who stood or sat in the threatening weather and listened to speeches by senators, teachers, parents, state and city officials. Band and A Capella numbers by State's organizations provided the musical part of the entertainment.

By far the biggest moment of the day was the official turning of the first shovel full of earth by Dr. Roberts. The earth was placed in an earthenware vase and will be preserved for the college. Shovel-fully by Roberts, Senator Shelley, student body officers, officials from the State department of education filled the vase.

First actual work on the campus began February when N.Y.A. boys began clearing brush. April First saw 150 laborers start actual construction of temporary buildings.



GROUND IS BROKEN in official ceremonies. Roberts helps clear brush for construction.



STUDENT WORK ON projects studying travel, health, buying, art. Two student teachers supervise all activities all day. The integrated curriculum is carried out by tying all class activities in with the main project

# STATE STUDENTS PRACTICE

**S**EVENTY-FIVE per cent of the students at San Francisco State College are taking a pre-teaching course. Required for every student intending to enter that profession is at least one year of directed teaching. The first year of such directed teaching is usually fulfilled by practice in the training school provided by the State on the college campus.

Progressive education and the integrated curriculum are by-words among supervisors and teachers alike in the Frederic Burk program. Under Director of Practice Teaching Sherman L. Brown and several faculty supervisors, classes under practice teachers plan projects, do original research, prepare displays.



RECOMMENDATIONS FOR PROFESSIONAL teaching jobs depend upon the students' showing under directed practice teaching. The policy of strict but not harsh discipline for Frederic Burk students, combined with the four-a-day system of teachers, gives the student teacher as difficult a trial period as he will receive in regular jobs.

# TEACHING AT FREDERIC BURK

Each class is under the direction of four teachers a day, two in the morning, another two in the afternoon. One of the morning teachers takes over the class for a period of three or six weeks, while the other acts as assistant—then the teachers change, and the second becomes the master teacher and the first the assistant. The afternoon classes work in the same manner.

Training is provided in nursery school, kindergarten-primary, elementary and junior high. Projects carried out by some of last year's classes are pictured above, where Frederic Burk students are working on projects in science, art, health, travel. Each class picks out a main project for the year and all work is based on it.



**JACK TISDALE**  
placed with  
California Steel Products Co.  
*Estimating and Designing*



**CLARA HOWARD**  
placed with  
Johns Manville Corp.  
as  
*Private Secretary*

## After College—it's HEALD'S for BUSINESS or ENGINEERING TRAINING

The Heald Private Secretarial and Business Practice Training will give your College background an immediate cash value and serve as the most potent wedge in entering the business world.

The Heald Engineering Courses, consisting of Practical shop and class room work under individual supervision, will prepare you for a real man's job in a very short time.

Heald's 77 years' experience in training young men and women for jobs assures you of the best in practical education. Heald Employment Service has developed thousands of contacts in all lines of industry for its graduates. This Placement Service is yours free of charge, throughout your business career.

Many employment calls go unfilled because trained workers are not available. These records prove that Heald Graduates are in demand.

Be HEALD TRAINED for a GOOD JOB

## HEALD COLLEGE

BUSINESS  
Van Ness Ave. at Post St.

ENGINEERING  
San Francisco

Other Heald Colleges at Oakland, Sacramento, San Jose

For Graduation Parties  
and  
All Entertainment Needs

## MORNING GLORY Sandwiches

Help your scholarship fund by  
patronizing the Co-op Cafeteria.  
Ask for Morning Glories by  
name.

Fillmore 6922    Piedmont 4404

## VENETO ITALIAN RESTAURANT

DINNERS 65c—SUNDAY 75c



BANQUET FACILITIES  
389 BAY ST., S. F.

## THE NEW MUSIC CENTRE WATERS & ROSS

533 Sutter Street      Sutter 1902

LOREE and PENZEL MUELLER Clarinets  
OLDS and KING Band Instruments

A new stock of fine pianos

The most complete stock of band, orchestra and choral music on the coast

The best equipped repair shop  
in the West

"Ask about our RENTAL plan"

COME TO THE

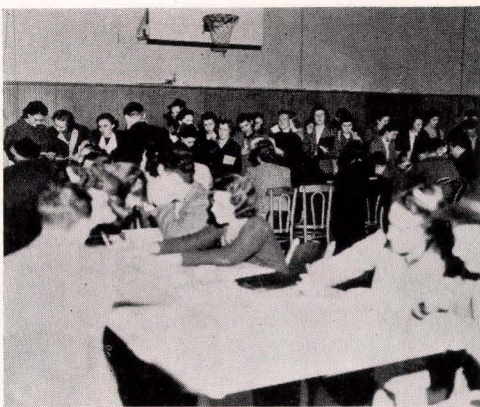
## PACIFIC HARDWARE COMPANY

520 Haight St.

for your

PAINTS - TOOLS  
HOUSEWARES - CUTLERY  
ELECTRICAL SUPPLIES  
GLASS and GLAZING  
SPORTING GOODS  
Quality and Service

Phone  
UNderhill 4428



LINES FORM TO COLLECT registration books, pay fees, sign for classes.

## STATE REACHES NEW HIGH IN REGISTRATION

**O**NLY a few years ago San Francisco State boasted a new record freshman class—300 strong. Figures such as these (1937-38-39) are dwarfed by the numerical strength of today's freshman classes.

Fall registration saw 700 low freshmen registering, bringing the total number of students up to 2200, and the spring semester brought an additional 500 frosh, swelled figures to 2263 regular students, 2600 counting extension, evening, limited students.

# GRADS '40

OUR VERY BEST WISHES FOR  
YOUR CONTINUED SUCCESS!



## STUDENTS' BOOK STORE

TEXTBOOKS

STATIONERY

TRADE BOOKS

JEWELRY

FOR YOUR  
HEALTH  
AND  
ENJOYMENT

CARNATION  
ICE CREAM

SATIN-SMOOTH  
BY INSTANT  
FREEZING

SAN FRANCISCO  
OAKLAND

# Acknowledgements



This Franciscan marks the passing of the most eventful year in the history of the college. The college has seen construction begin on the new campus, enrollment jump to 2300, athletic teams reach new heights, while music has gained international laurels for its fine performances.

To record this year in pictorial and written form for the 1940 Franciscan has indeed been a pleasure.

Our deepest and most sincere thanks are due to those without whom this book would be impossible. For their cooperation, assistance, and encouragement, special thanks are due Betty Davis, Margaret Sullivan, John Pichotto, Betty Zehnder, and those many other students, both on and off the staff, who have helped in creating this book.

For excellent work and suggestions, thanks are due Mr. Albert K. Anderson of the Osborne Printing Company, Dr. Richard E. Benson of Photo-Art Engraving Company, Harold Martin, and Walter Cameron, photographers.

A special paragraph for Stephen Mills, staff artist, is well deserved. Working under the handicap of using an art medium entirely new to him, Mills' original lithographs contained in this book add immeasurably to its value.

For any mistakes that appear in this book, we ask tolerance. For any praise given this book, we are grateful.

Thank you,

ERNEST MIGUEL, *Editor*



*Mac—Ted*



*Nick*



*Boss Bale*

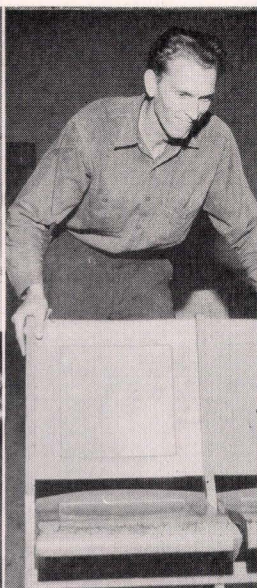


*Not Santa—Charlie!*

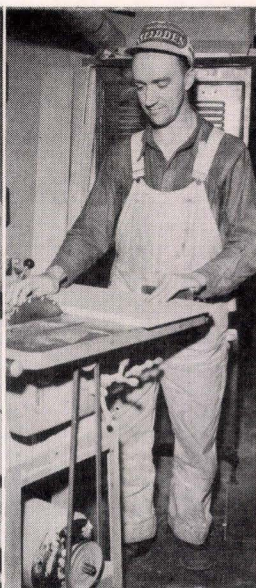
# IT'S ALL CLEANED UP NOW!



*Matron*



*Charlie*



*Lewis*



*Mac*



*Rees*



Edna Garner

