

The
1929
Franciscan



VOLUME IV

PUBLISHED BY STUDENTS
OF THE
SAN FRANCISCO
STATE TEACHERS COLLEGE
SAN FRANCISCO, CALIFORNIA



*The
1929
Franciscan*



COPYRIGHT 1929



FOR THE STUDENT BODY
OF THE
SAN FRANCISCO STATE
TEACHERS COLLEGE

by

GERALDYNE EGLESTON

Editor

VICTORINE MURPHY

Manager

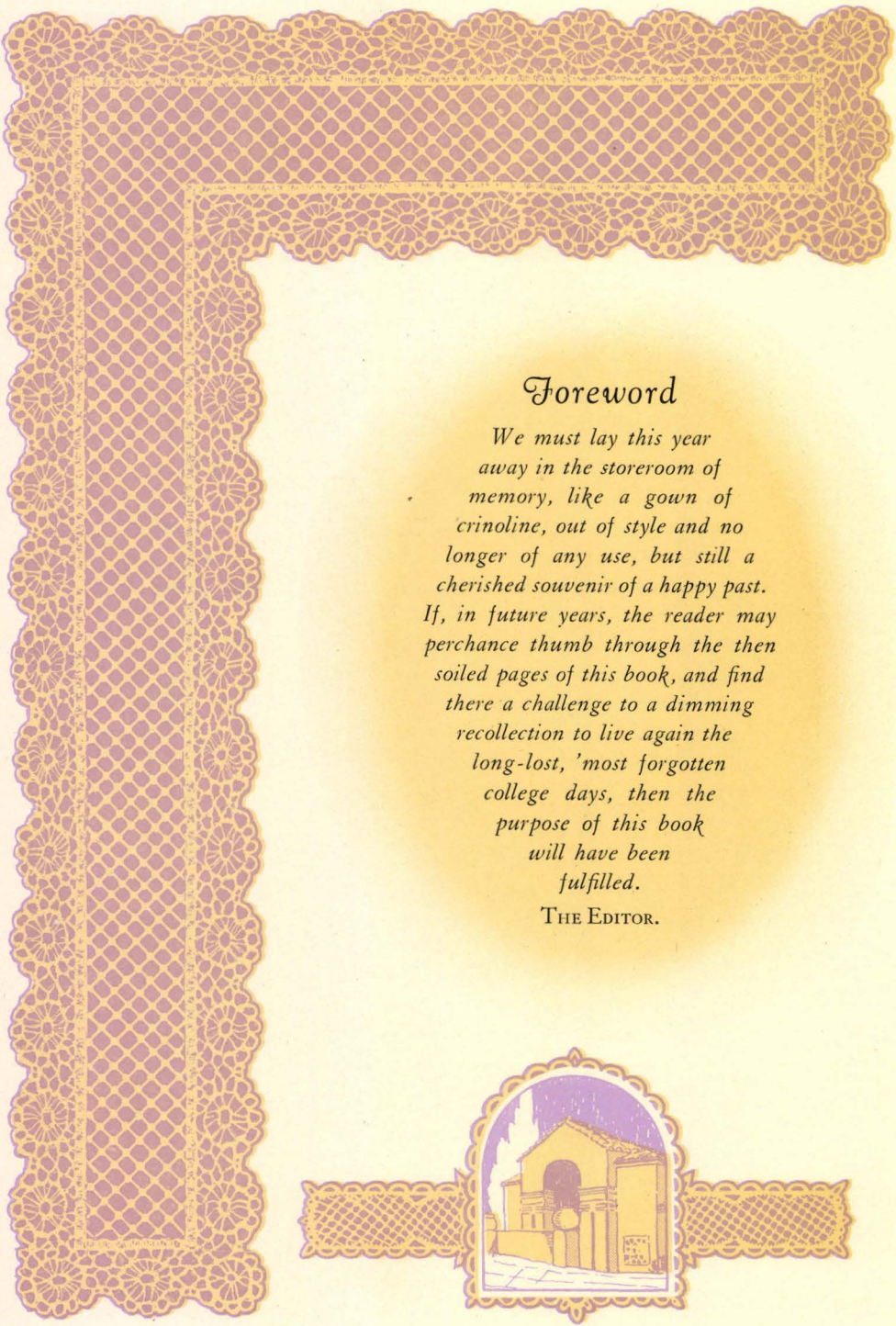
Designed and Engraved by
COMMERCIAL ART & ENGRAVING CO.
San Francisco

Printed and Bound by
BECK-GERLACH PRINTING CO.
San Francisco

Dedication

Because we feel the need of an adequate expression of our deep regard for her splendid attributes of loyalty and co-operation, her fine capacities of friendship and motherliness, and her rare good fellowship on all occasions, and because we can see no more fitting tribute to one who has become a steady source of inspiration to us, we dedicate this book to

MISS EVA LEVY

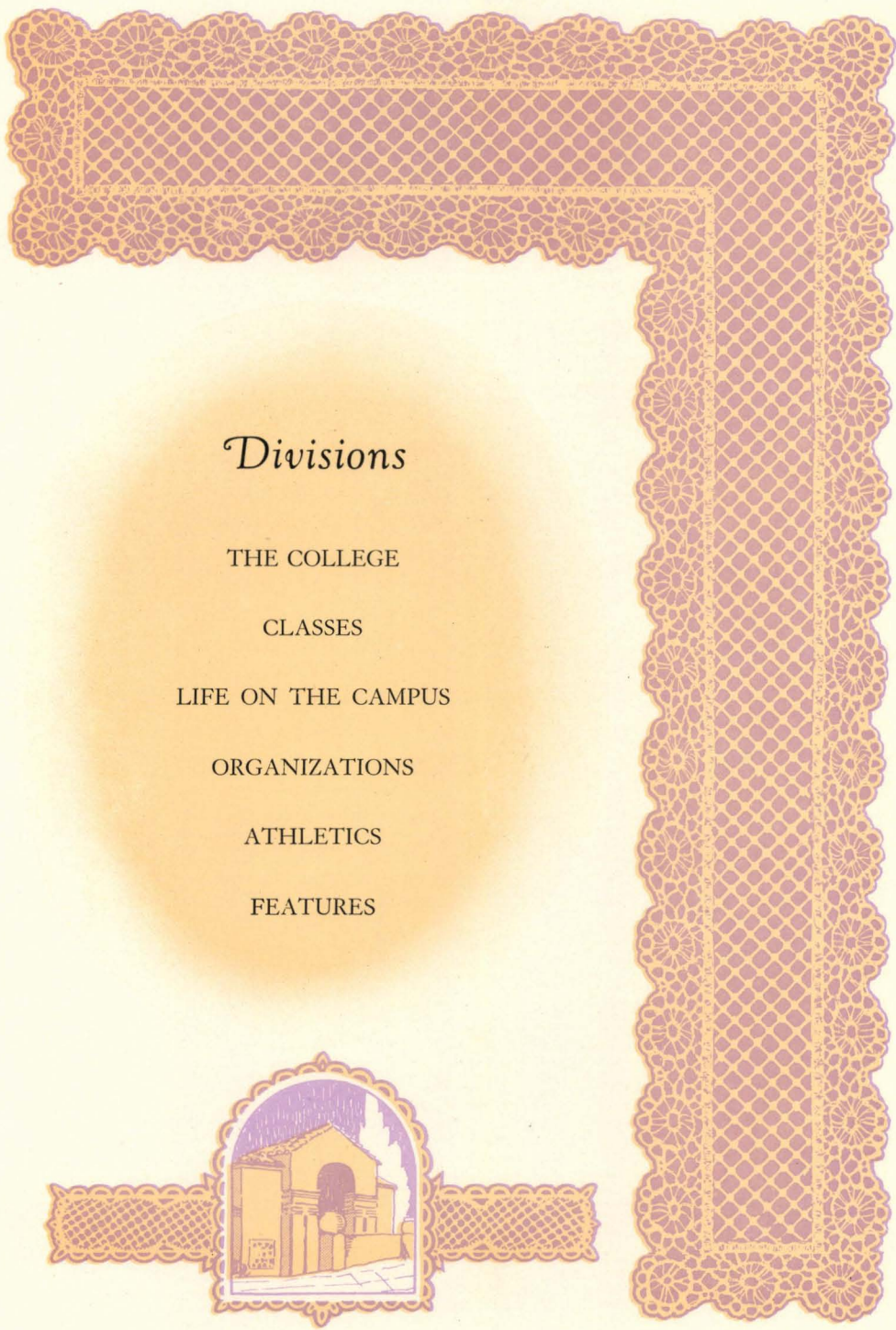


Foreword

*We must lay this year
away in the storeroom of
memory, like a gown of
crinoline, out of style and no
longer of any use, but still a
cherished souvenir of a happy past.
If, in future years, the reader may
perchance thumb through the then
soiled pages of this book, and find
there a challenge to a dimming
recollection to live again the
long-lost, 'most forgotten
college days, then the
purpose of this book
will have been
fulfilled.*

THE EDITOR.





Divisions

THE COLLEGE

CLASSES

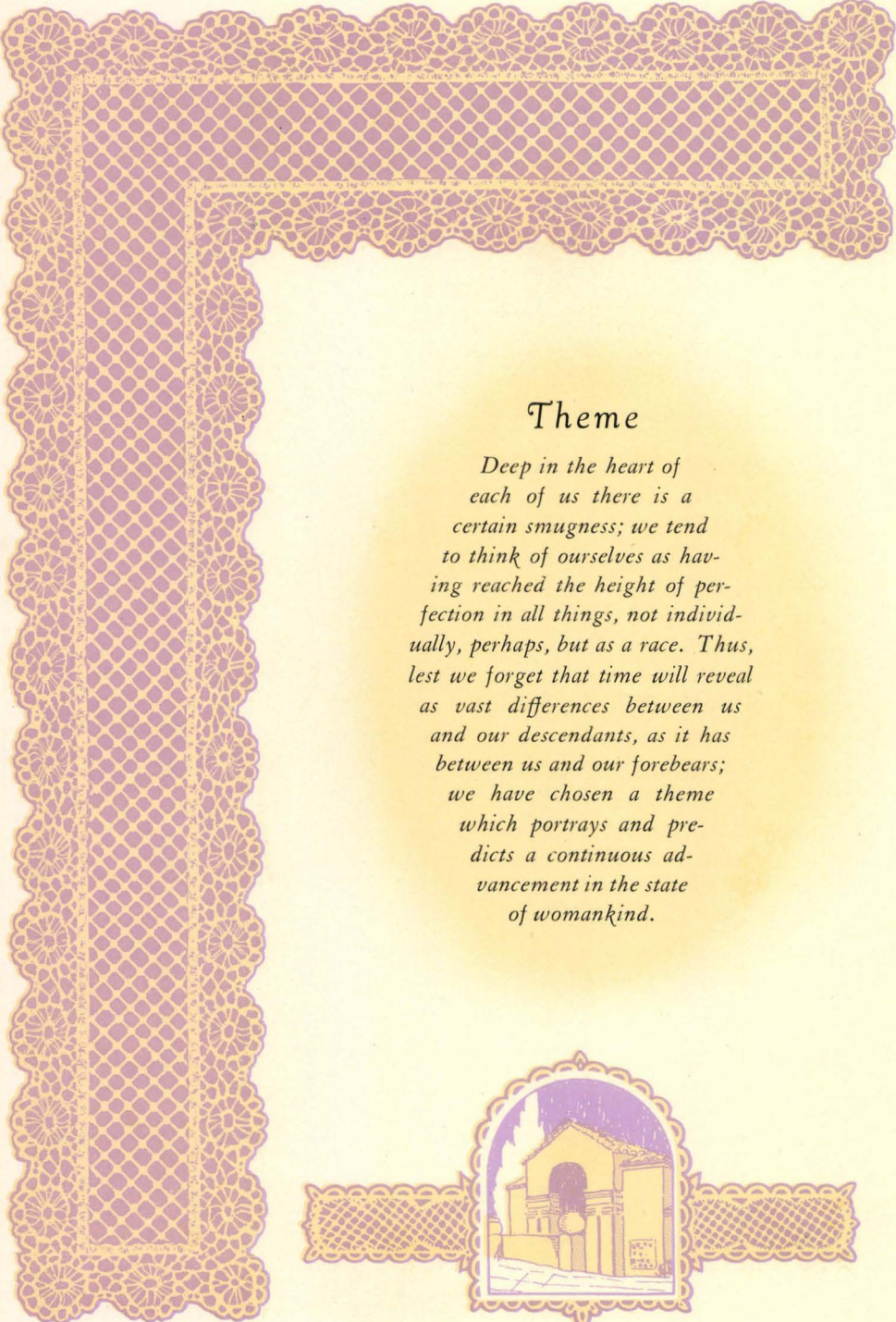
LIFE ON THE CAMPUS

ORGANIZATIONS

ATHLETICS

FEATURES





Theme

*Deep in the heart of
each of us there is a
certain smugness; we tend
to think of ourselves as hav-
ing reached the height of per-
fection in all things, not individ-
ually, perhaps, but as a race. Thus,
lest we forget that time will reveal
as vast differences between us
and our descendants, as it has
between us and our forebears;
we have chosen a theme
which portrays and pre-
dicts a continuous ad-
vancement in the state
of womankind.*



Staff

GERALDYNE EGLESTON

Editor

VICTORINE MURPHY

Manager

JEAN BURNES

Art Editor

RUTH LESCINSKI

Advertising Manager



1776

Milady, with her powdered wig, her low-cut bodice, her gowns of heavy brocaded silks, presents a picture highly intriguing. What a strange bundle of contradictions she was!

'Twas quite *a la mode* to show the snowy white of the bosom, but quite *gauche* to reveal the ankles. Pantaloon of lace she wore; how quaint!

And her gentlemen friends! Such pompousness, such sartorial elegance! 'Twas small wonder that she dressed herself so richly, for she was forced to meet the standard set by vain *man*!

She rode in a coach and four and found her recreation in a continuous round of society, day and night. Our lady of 1776 lived in what has well been called, the "POMPOUS AGE."





The College



Campus



*"'Tis monstrous and damnable,
methinks, for the hussies to dress
themselves in such manner to
make the rakes cast sheep's eyes
at them!"*



*"Lud, but license and jollity rein
here, methinks! 'Twould be a
terrible to-do could my mother
see these wantons, for she is a
paragon of propriety!"*



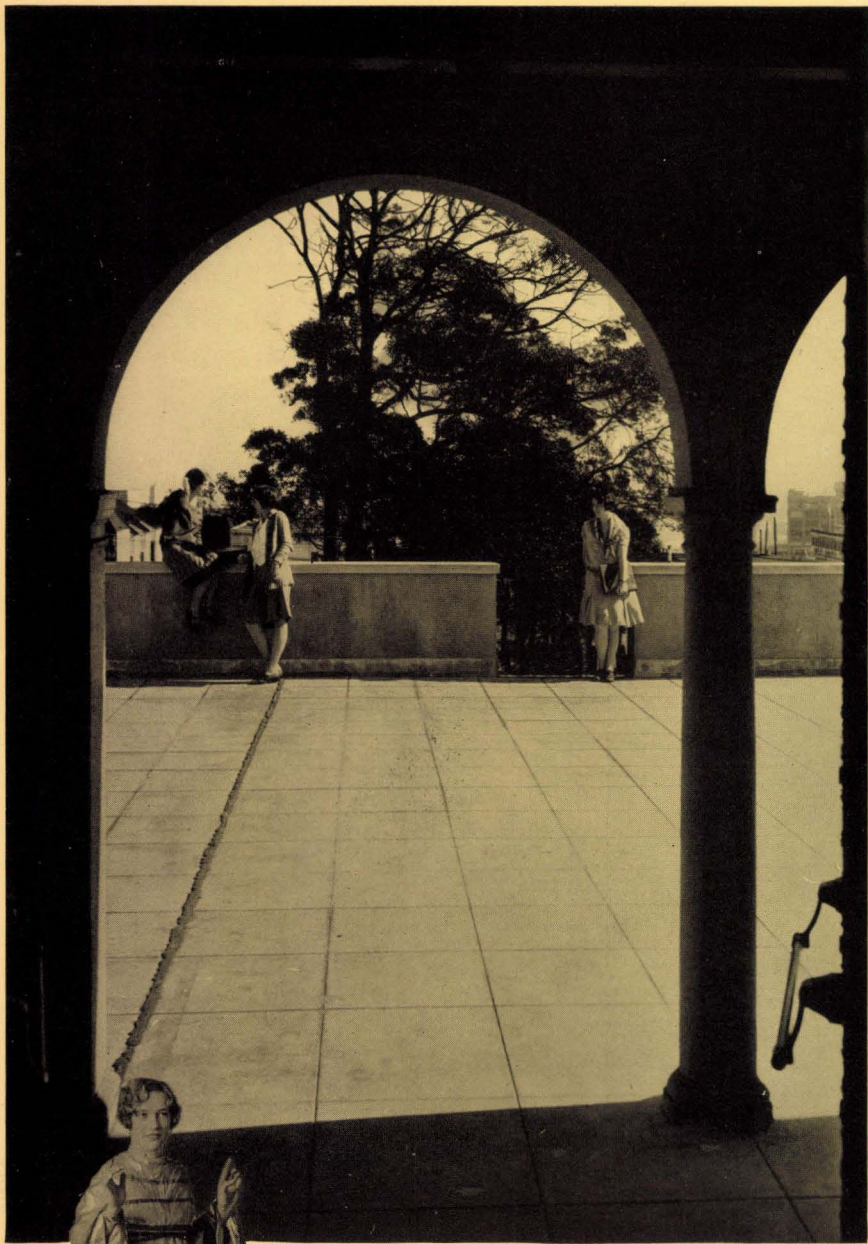


*"Methinks that the sly baggages
are as thin as maypoles! 'Twas
the mantua maker, himself, who
said just this morning that the
"elegant form should protrude a
little behind as well as on the
hips!"*



*"These wenches do not know
what the word "shame" signifies!
'Tis certain that my mother
would reward me with a box on
the ear, should I show myself
outside my chamber in such des-
habille!"*





*"Lud, but I must admit that I am
caught by the wenches! But me-
thinks that they needs must have
use for hoops to hide their lovers
under!"*



*"Methinks that to attract the
wild blades one must leave off
the quilted petticoats and under-
linen, and show that one's form
is slim and supple too!"*



1776 to 1929

Down cast eyes and crimson blushes,
Lavender and lace held sway;
Wide spread silks and buckled slippers
Fragrant sweetness of that day.

Dainty hands that fixed so deftly
Quaint old bustles in their place.
All have gone—but mem'ries linger—
Lavender and old, old lace.

.

Knee-length skirts—oh my, how shocking—
Yellow slicker—red beret;
Swimming athlete, aviatrix,
She's the symbol of our day.

Vanished now the dear, quaint lady
In her place this girl we meet;
She's her daughter's daughter's daughter,
Something wholesome, thrice as sweet.



Faculty



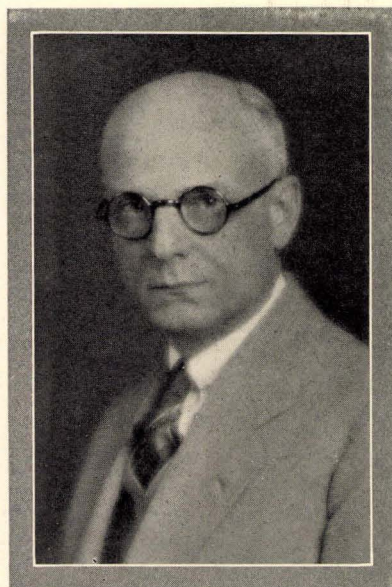
Our College

The change and growth of lusty youth are upon us,—the west, the state, the city, and the College. Anderson Hall has been a year in service. The walls of the Frederic Burk School are rising, proclaiming a new day here to those who travel the ways of business on Market Street. Tennis courts, play fields, terraces, levels of lawn, and gardens with trees and shrubbery groups, faintly hint the future beauties of the campus worthy of the new buildings. Waller Street,—wall, cobbles, and shacks, gives way to level spaces for outdoor play. College Hall, rebuilt, refinished, refurnished, shifts from training school to college use, until it too shall follow the shacks.

A year has passed. Two great classes have gone into the service of the state, and two worthy new classes have entered the College. New student officers have taken the places of the old, with new enthusiasm and courage. New hands are at the helm of every college activity; student enterprises move forward. Faculty members, by worthy teaching, effective study, and acceptable writing, have carried the name and the ideals of the College afar. Scholarship has gained; there was no jar or break, no rending of tradition, no sense of losing the past or groping blindly for the future, as the academic and professional standards of the new four-year curriculum were set up and accepted. The year's activities and institutional spirit have justified the challenge with which the year began; that: *We shall do the old task better and the new task well.*

This is the three-fold wish for the new year; first, that as the physical plant becomes more nearly adequate and efficient, scholarship standards may grow apace; second, that as the campus becomes more beautiful, the play fields more spacious, and the gardens and lawns more worthy of the city and state, the students may find a greater happiness and joy in worthy tasks,—the Gift Supreme which the College grants its children; and third, that we shall make new friends into firm friends, and old friends into better, to the end that serene and unafraid we shall face the tasks of the future.

Alexander C. Roberts



A year ago, very soon after I had come a stranger among you, I was graciously invited to write a message of greeting for the FRANCISCAN of 1928. And now you of a later class have tendered me a similar honor. The opportunity to write you a new message makes it possible for me to make it three dimensional and to take the past as well as the present and future into account.

Of the past I can only say that the year just closed has been a happy one for me, and that it has been so because, in the performance of the duties assigned to me, I have had such uniform courtesy and such friendly co-operation and encouragement from all of you.

Of the present I could say many things. But in a limited space there is need to be brief so I shall mention but one. The spirit and the atmosphere of the College is collegiate in the best meaning of that word. There is here an earnestness, a real professional attitude, and withal a serenity and a joyousness that should always be where youth is.

And of the future again I might say much, but this will do,—I have no greater ambition than so to perform my duties and meet my responsibilities that I may render you and the college a service of increasing value through the coming years.



That silent, intangible, yet dynamic, all-pervading something within our college walls which we call the human torch has attained new depth and meaning in the year just closed. Never has there been greater evidence of mutual understanding and friendly relationship between faculty and students, never more generous whole-hearted co-operation from student-organizations and surely never greater alertness and eagerness on the part of students to assist each other with the problems of college life.

Privileged to know something of the inner life of the student group, I believe that much of this fine spirit emanates from an increasingly large number of young women in our midst, who sustained by belief in the worthwhileness of the profession they have selected, are obtaining a college education at great personal sacrifice, often accompanied by responsibilities of almost unbelievable weight and complexity. Forgetful of self, eager and alert, they are never too busy for the friendly smile or word of cheer, the handclasp of understanding, or the timely service. To these young women and to all who have wrought this wonderful spirit into our college life, we owe much, for upon the cornerstone of human service, and consideration of the needs of the individual, our college will rise truly great.

Mary A. Ward

The Faculty

ALICE ALLCUTT

Supervisor Kindergarten-Primary Department
B.S. Teachers College, Columbia University

EDNA LOCKE BARNEY

Medical Director
M.D. University of California

CECELIA ANDERSON

Supervision and Education
Graduate of Milwaukee Normal School;
University of California

HENRY C. BIDDLE

Physical Science
Ph.D. University of Chicago

ELIAS T. ARNESEN

English
Ph.D. University of Washington

JESSIE BILLINGSLEY

Supervision and Education
M.A. University of Colorado

MARION B. BARBOUR

Supervisor Kindergarten-Primary Department
B.S. Columbia University

EDNA W. BOCK

English
M.A. University of California

ALEXANDER S. BOULWARE

Mathematics
A.B. Stanford University



ALLCUTT
BIDDLE

ANDERSON
BILLINGSLEY

ARNESEN
BOCK

BARBOUR
BOULWARE

The Faculty

CATHERINE BURKHOLDER

Supervision and Education
Ph.B. University of Chicago

JOHN H. BUTLER

Education and Journalism
M.A. Columbia University

GRACE CARTER

Vice-Principal of the Training School
Graduate of S. F. State Teachers College
Columbia University

JESSIE CASEBOLT

English
Graduate of S. F. State Teachers College
University of California

FLOYD CAVE

Political Science and Philosophy
Ph.D. University of California

HELEN M. CHRISTIANSON

Nursery School and Kindergarten
M.A. Columbia University

MARIAN COOCH

Fine and Manual Arts
Teachers College, Columbia University

OLIVE THOMPSON COWELL

Social Science
M.A. University of California

CLARA CRUMPTON

Registrar
Graduate of S. F. State Teachers College

BELLE H. DeCAMP

Supervision Kindergarten-Primary Department
Graduate of Oswego Normal School

MARIE M. DONY

French
M.A. University of California

ANNA V. DORRIS

Director of Visual Instruction
Social Science
University of California; Columbia University

CLARENCE J. DuFOUR

Dean of the College
Ph.D. University of California

BLANCHE WILSON ELLSWORTH

English
M.A. University of California



BURKHOLDER
CHRISTIANSON

COOCH

BUTLER
CRUMPTON

CARTER
DuFOUR

CASEBOLT
ELLSWORTH

The Faculty

ETHEL ENGLAND
Music
S. F. State Teachers College
University of California

DORA GRACE ERICKSON
Spanish
M.A. University of California

RUTH FLEMING
Librarian
A.B. University of Iowa

ARTHUR S. GIST
Principal of the Training School
and Director of Practice Teaching
M.A. University of Washington

FLORENCE HALE
Physical Education
Graduate of S. F. State Teachers College
University of California

KATHERINE HALL
Physical Education
Graduate of S. F. State Teachers College

HERMINE HENZE
Children's Librarian
B.L. University of California

HILDA M. HOLMES
Psychology
A.B. University of California

DORIS D. HOLTZ
Physical Education and Penmanship
Graduate of S. F. State Teachers College
University of California at Los Angeles



ERICKSON
HALL

FLEMING
HENZE

GIST
HOLMES

HALE
HOLTZ

The Faculty

MARY LOUISE KLEINECKE

English
M.A. University of California

WILLIAM E. KNUTH

Music
M.A. University of Washington

EVA LEVY

Music
Graduate of S. F. State Teachers College

LOUISE REINHOLD LYNCH

Supervision and Education
Graduate of S. F. State Teachers College

IRMA JONES MARPLES

Library Assistant
S. F. State Teachers College

EVELYN S. MAYER

Fine and Manual Arts
B.S. Columbia University

MARY WEAVER McCAULEY

Music
Ohio Wesleyan University
University of California
Delaware Conservatory of Music

EFFIE B. McFADDEN

Biological Science
A.B. Stanford University

PEVERIL MEIGGS

Social Science
M.A. University of California

ELENE M. MICHELL

Social Science
Ed. D. Harvard University

AGNES MOE

Supervision and Education
A.B. University of California



KLEINECKE
MAYER

McCAULEY

KNUTH
MEIGGS

LEVY
MICHELL

MARPLES
MOE

The Faculty

BERTHA H. MONROE
Social Science
Graduate of Thomas Normal School;
Columbia University

EMILY CURTISS RAY
Assistant Registrar
University of California

STANLEY W. MORSE
Natural Science
M.A. Stanford University

FRANK RAY
Manual Arts
Wesley College, Melbourne, Australia

CARLOS S. MUNDT
Physical Science
M.A. University of California

LEA REID
Biological Science
M.S. University of California

EDITH A. PICKARD
Biological Science
M.A. University of California

ALEXANDER C. ROBERTS
President of College
Ph.D. University of Washington

ELDA ROMANDER
Reference Librarian
Graduate of Library School,
University of California



MONROE
E. RAY

MORSE
F. RAY

REID
MUNDT

ROBERTS

PICKARD
ROMANDER

The Faculty

STANLEY I. RYPINS
English and Social Science
Ph.D. Harvard University;
Oxford University

EVANGELINE ADAMS SPOZIO
Supervision and Education
M.A. University of California

HILDA KEEL-SMITH
Art
Graduate of S. F. Institute of Art;
University of California

LILLIAN TALBERT
Supervision and Education
M.A. University of California

SARA F. SCOTT
Physical Education
A.B. Mills College

P. F. VALENTINE
Education and Psychology
Ed.D. University of California

ALICE SPELMAN
Home Economics
B.S. Kansas State Teachers College

FLORENCE VANCE
Recorder
Graduate of S. F. State
Teachers College

MARY A. WARD
Dean of Women and Director
of the Summer Session School
B.S. Columbia University



RYPINS
SPOZIO

TALBERT

SMITH

VALENTINE

SCOTT

VANCE

SPELMAN
WARD

The Faculty Administration

ALEXANDER C. ROBERTS
President of College
Ph.D. University of Washington

CLARA CRUMPTON
Registrar
Graduate of S. F. State Teachers College

CLARENCE J. DuFOUR
Dean of College
Ph.D. University of California

FLORENCE VANCE
Recorder
Graduate of S. F. State Teachers College

MARY A. WARD
Dean of Women and
Director of the Summer Session School
B.S. Columbia University

GRACE CARTER
Vice-Principal of the Training School
Graduate of S. F. State Teachers College
Columbia University
University of Washington

ARTHUR S. GIST
Principal of the Training School
and Director of Practice Teaching
M.A. University of Washington

EMILY CURTISS RAY
Assistant Registrar
University of California

KATHERINE HUSSEY
Financial Secretary



ROBERTS
CRUMPTON

DuFOUR
VANCE

WARD
CARTER

GIST
RAY



Student Administration



If we were living in an age of wonders and superstitions, I would believe that something of a miracle had occurred in our student body. Since I entered the office, it has been my aim to put our college on a more collegiate basis, especially in social functions. I have brought my ideas to the Executive Board, which has been gratifying in its willingness to work for such ideals.

I believe that we have now reached a strategic point in our career that necessitates vigorous effort to keep our functions on a high level. But alas, we are somewhat handicapped. Our facilities are inadequate; consequently a little inconvenience and annoyance are bound to result. On the other hand, there are compensations for these shortcomings. For one thing, we have now achieved the true scholastic basis of college work culminating in a Bachelor of Arts Degree.

In closing permit me to say that I hope you will always be as wonderful and helpful pals to the future presidents as you have been to me. Furthermore I feel that before many years I will look back on my Alma Mater with pride and not a little regret, treasuring the memories it has delicately and unforgettably traced upon my mind.

Pat Schulze



POWERS

MURPHY

CORCORAN

LAGOMARSINO

Student Body Officers

VELMA SCHULZE	- - - - -	President
CONSTANCE POWERS	- - - - -	Vice-President
NORA MURPHY	- - - - -	Secretary
MARGARET CORCORAN	- - - - -	Treasurer
EVELYN LAGOMARSINO	- - - - -	Yell Leader

At the close of another year of work the Student Body of our college realizes its debt of gratitude to the Student Body officers. President "Pat" Schulze and her efficient co-workers, Constance Powers, Nora Murphy, Margaret Corcoran, and Evelyn Lagomarsino have guided the Student Body through a happy and eminently successful year. During this year a note of fineness and dignity was added to assemblies. Some of the best speakers in the fields of education and the arts were presented at these assemblies.

The Student Body officers did not neglect the social activities. A number of very enjoyable affairs added to the delight of the year. The Student Body tea and the Student Body dance received the enthusiastic praise of the students. But perhaps the best remembered of the year's activities was the Candle Light Dinner, which by its impressive ceremony became one of the most interesting and delightful affairs of the year. So to "Pat" Schulze and her capable assistants is due much of the credit for the happiness and success which the Student Body enjoyed in 1928 and 1929.

The Executive Board

Once again the Executive Board has proved itself a capable and valuable body in our college affairs; much of the success of the past year is due to this group of alert workers. The Executive Board is composed of the five Student Body officers and the seven class presidents. Miss Levy is the advisor. Among the many achievements of this body there is one that stands out in particular, the establishment and subsequent smooth running order of the "Co-op" Store.

Fall Semester	Officers	Spring Semester
VELMA SCHULZE - -	<i>President</i> - - - - -	VELMA SCHULZE
CONSTANCE POWERS -	<i>Vice-President</i> - - -	CONSTANCE POWERS
NORA MURPHY - - -	<i>Secretary</i> - - - - -	NORA MURPHY
MARGARET CORCORAN -	<i>Treasurer</i> - - - -	MARGARET CORCORAN
EVELYN LAGOMARSINO -	<i>Yell Leader</i> - - - -	EVELYN LAGOMARSINO
GLADYS BANNER - - -	<i>President, December, 1928</i>	
MAE GATES - - - -	<i>President, May, 1929</i> - -	PAULINE RATTO
FLORENCE SMART - -	<i>President, December, 1929</i> -	JANIS MILLER
THELMA MALLOY - - -	<i>President, May, 1930</i> -	MARION DONALDSON
EUNICE HUMPHREYS - -	<i>President, December, 1931</i> -	JACQUELYN BEEDLE
LAHOMA ATKINSON - -	<i>President, May, 1932</i> - -	RAGNHILD OLSEN
	<i>President, December, 1932</i> -	VIOLA GIESEN



Back row: GIESEN, MILLER, DONALDSON, OLSEN, LEVY, RATTO
Front row: CORCORAN, LAGOMARSINO, SCHULZE, POWERS, MURPHY

Student Affairs Committee


The Student Affairs Committee, which has the distinction of being the first standing committee of both faculty and student members to be organized in the college, has just completed its second year of work. And a profitable year it has been. The committee is composed of nine faculty members and sixteen student members. Miss Levy is the chairman.

The Student Affairs Committee was organized for the purpose of giving encouragement and support to all Student Body activities. This committee, in conjunction with the Executive Board, is responsible for all Student Body functions. All the clubs in the college are organized and operated under the supervision of the Student Affairs Committee. The flourishing condition of all the clubs speaks well for this board. This year's committee played a large part in the planning of the new Co-op Store.

The faculty members on the committee were: Miss Levy, Miss Bock, Miss Hale, Dr. Rypins, Dr. Valentine, Mr. Ray, and Mr. Knuth. The student members were: Anita Tiernan, Jean Zeis, Frances Shire, Marie Schnittger, Mary McGloin, Constance Powers, Cecyl Bruner, Rosalie McBride, Dorothy Dunne, Gladys King, Lois Harding, Fannie Salomon, Eleanor Rathke, Elizabeth Boniface, Velma Schulze, Victorine Murphy, and Mae Gates.



Back row: BONIFACE, ZEIS, RAY, KNUTH, VALENTINE, SCHNITTGER, LEVY
Front row: BOCK, MURPHY, DUNNE, HARDING, SCHULZE, SHIRE, POWERS, TIERNAN, BRUNER, GATES



College Hymn

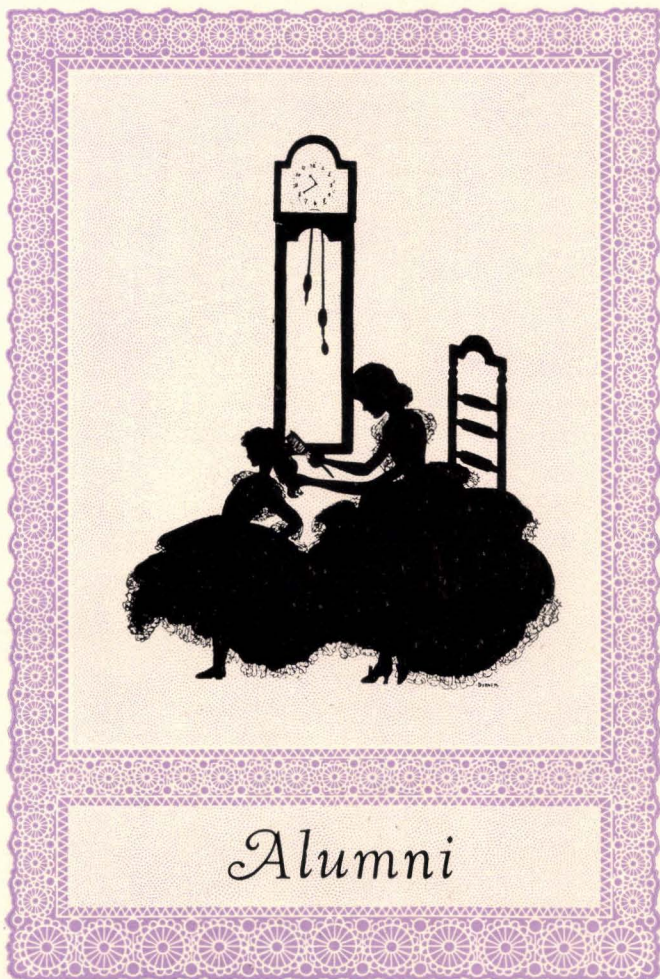
*Above the storied city,
With echo of old romance;
Upon the sod that the padres trod
We have found our inheritance!*

*Faith of valiant builders,
Dream of pioneers,
Hearts afire with a high desire
For the prize of the future years!*

*Our college proudly holds thee,
O, spirit brave and free!
And in the thought of the deeds
Thou has wrought,
We pledge our loyalty.*

*Hail, San Francisco! Alma Mater,
Hail!
Thy heritage so nobly borne
Forever shall prevail!*

*And from the rugged hilltops
Unto the distant shore,
Thy praise shall ring and go echoing,
All hail! All hail! All hail!*



Alumni Association

ETTA TESSMER - - - - -	<i>President</i>
BERTHA ROBERTS - - - - -	<i>Vice-President</i>
FLORENCE VANCE - - - - -	<i>Secretary</i>
LORETTA KOEPPE - - - - -	<i>Treasurer</i>

Too often college friendships drift apart because of separation after graduation. Too often companionships which should be encouraged, are forgotten. The Alumni Association of the San Francisco State Teachers College was organized several years ago chiefly for the purpose of maintaining these friendships and companionships by bringing about the reunion of past graduates of the San Francisco State Teachers College.

As the membership of the Alumni Association is open to all graduates of the San Francisco State Teachers College, its roll has increased as the closing of each semester has brought into the folds of the Association many new members who have graduated, yet who do not wish to forget their Alma Mater, and the many memories that are centered around her. So many people have joined that at present the membership of the Alumni Association extends to all parts of the state of California. The exact number of members belonging to the organization is not known.

One of the many means by which the Alumni Association has sought to maintain the friendship and companionship formed at San Francisco State Teachers College has been



KOEPPE

TESSMER

VANCE

Alumni Association (Continued)

through its social activities. As the tea sponsored by the Association last year proved to be a big success, a bridge tea was sponsored by the Alumni again this year.

The affair was held at the Hotel St. Francis, Saturday, April 13, 1929. The Colonial and Italian rooms of the hotel made a charming background for the many guests that were assembled. Colorful decorations added to the air of festivity. Dainty prizes were awarded to those who won at cards. A debt of gratitude is owed to Mrs. Edith Hackett and her committee who worked so diligently and who so successfully handled the affair.

The Alumni Association intends to participate in many more activities to some of which the general Student Body of the college may be invited. Although the members of the Association have gone from San Francisco State Teachers College, and the things they have accomplished during the past year, will not soon be forgotten.



GERTRUDE FLEMMING



MINNIE KELLEY

1850

Revelations! During the seventy-five years since the Revolution, woman had thrown off certain of the bonds of fashion—pantaloons were just a memory! If, perchance, a wind should rustle the skirts of the girl of 1850, sly ankles might reveal themselves for a fleeting instant. As if she were ashamed of this display, she wore her dresses with high-cut necks.

There was a certain quaintness about her, a product of her quickening knowledge that woman's lot was becoming better, combined with an amazing modesty that forbade her doing anything about it. Hence we find her an intriguing miss, indeed, her mind a battle-ground of conflicting inclinations.



Forsaking, in part, the giddy whirl of parties and balls, our lady of 1850 sought diversion in other things. Many were the sunny days when one might hear the dull thud of a mallet against a croquet ball or the chaste rattle of the domino.



Classes



Graduates



GLADYS BANNER
President

Class of December, 1928

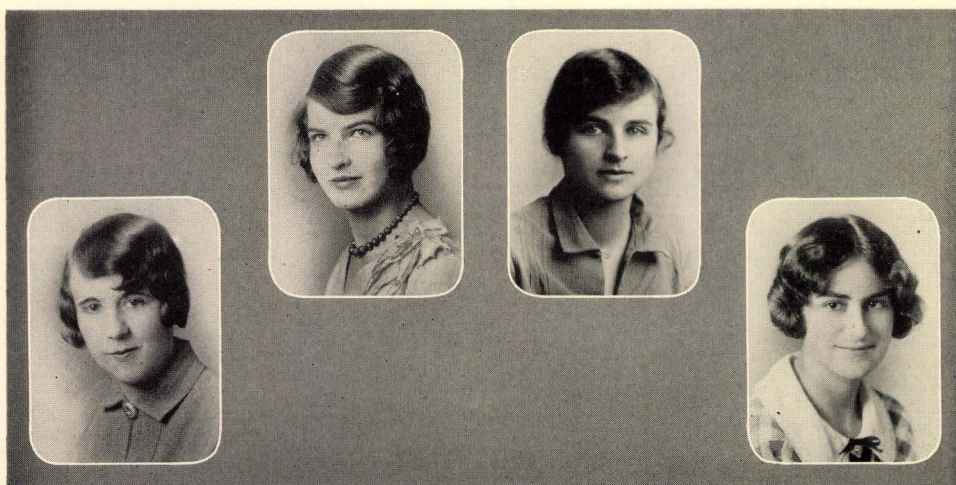
"Resolved: to make the most of our last semester at college." Whether or not this resolution was actually made is unknown; certain it is that its spirit was carried out in deed and in truth by the class of December, 1928.

With Gladys Banner at the helm, the graduating class had its final round of pleasure during Senior Week, the last week of the Fall semester, before beaching the class ship forever on the shores of life. On Monday night of that eventful week, they enjoyed a dinner at the Hotel Whitcomb. The next affair was a luncheon, Wednesday, at the new Sir Francis Drake Hotel. On Thursday came the Candle-Light dinner in the new gymnasium. The Seniors were distinguishable from all other classes present, because of the perky little paper mortar boards they wore.

The grand finale of the week was graduation on Friday evening, December 21, 1928. The impressive commencement exercises were held in the auditorium of the Everett Junior High School, Sixteenth and Church Streets.

Officers

GLADYS BANNER	- - - - -	<i>President</i>
LORRAINE SWITZER	- - - - -	<i>Vice-President</i>
MARGARET MAGNER	- - - - -	<i>Secretary</i>
LIBBY FISHER	- - - - -	<i>Treasurer</i>
ANNE ROMANI	- - - - -	<i>Yell Leader</i>



SWITZER

MAGNER

FISHER

ROMANI

Class of May, 1929

The members of the class of May, 1929 are justly proud of the reputation which their group has earned. Throughout their college career, they have taken active part in all activities, and have been represented in all Student Body offices. Their names are recorded on the editorial staffs of *The Bay Leaf* and *THE FRANCISCAN*, in all varieties of sports, in the College Theater, and in executive capacity in a long list of college clubs.

Originally numbering two hundred and thirty members, the class dwindled to about a hundred and twenty-five. This loss, however, had its compensation in the spirit of loyalty and co-operation that existed during the past three years. A dinner at the Bellevue Hotel, a theater party at the President Theater, and the Senior Formal were among the outstanding events of the year. Then all too soon came Senior Week with graduation and farewell.



PAULINE RATTO
President

Fall Semester	Officers	Spring Semester
MAE GATES - - -	<i>President</i> - - -	PAULINE RATTO
AILEEN LUCEY - - -	<i>Vice-President</i> - - -	ELIZABETH BOLAND
PAULINE RATTO - - -	<i>Secretary</i> - - -	ELIZABETH SMITH
GERALDYNE EGLESTON -	<i>Treasurer</i> - - -	DOROTHY FORD
JOSEPHINE MULVIHILL -	<i>Yell Leader</i> - - -	DOROTHY EGGERS



BOLAND

SMITH

FORD

EGGERS

December, 1928

ANDERSON, VIVIAN
San Francisco
Elementary

BAKER, MADGE
Richmond
Elementary
Glee Club
Class Secretary
Class Treasurer

BOYD, GEORGINA
Sacramento
Elementary
Nyoda Club
Registration Committee

BULSON, MAXINE
Napa
Kindergarten-Primary

CURRIER, DOROTHY
Alameda
Elementary
Glee Club

DAVIS, KATHLEEN
Napa
Elementary
Nyoda Club
W.A.A.



December, 1928

BACIGALUPI, LOA
San Rafael
Kindergarten-Primary
Phi Lambda Chi

BANNER, GLADYS
Richmond
Elementary
Class Yell Leader
Class President
W.A.A.
College Theatre

BRUNER, CECYL
Oakland
Elementary
Phi Lambda Chi
Glee Club
Assoc. Editor Annual

CORRIGAN, ORPHA
San Francisco
A.B. Degree
College Theatre
Siena Club
Glee Club
W.A.A.

DAVIS, ELSIE
Millville
Elementary
Bookaneers Club

DAWSON, JEAN
San Francisco
Elementary
Assoc. Editor Annual

December, 1928

DE FIELD, THELMA
Berkeley
Elementary
Annual Board of Control
College Theatre

DUKEMAN, MYRTLE
South San Francisco
A.B. Degree

EVANS, HARRIET
San Francisco
Kindergarten-Primary

FIEDERLEIN, WILHELMINA
San Francisco
Elementary
W.A.A.
Bookaneers Club

FORSSE, EULALIE
Oakland
Elementary
Bookaneers Club
Senior Advisor

GALLO, AGNES
Oakland
Kindergarten-Primary
Kindergarten Club



December, 1928

DEMARTINI, EVELYN
San Francisco
Elementary

ENGLER, MADELINE
San Francisco
Elementary
W.A.A.
Bookaneers Club
Glee Club
Siena Club

FEEHAN, EDITHMARIAN
San Francisco
Elementary
W.A.A.
Siena Club
Golf Manager

FISHER, LIBBY
San Francisco
Elementary
W.A.A.
Class Treasurer

FOWDEN, MARIE
San Francisco
Elementary
Debate Club
Scribes Club

GAMBLE, LILLIAN
San Francisco
Elementary

December, 1928

GANTER, FLORENCE
Ukiah
Elementary

HARBAND, BESSIE
San Francisco
Elementary
Glee Club
W.A.A.
Lost and Found

HARTSOUGH, EVA
Oakland
Elementary
Scribes

HAWKINS, CATHLEEN
San Francisco
A.B. Degree

HOSTETTER, HELEN
San Francisco
Kindergarten-Primary
Kindergarten Club

KASPER, GERTRUDE
San Francisco
Elementary
W.A.A.



December, 1928

GERSTENBERG, ALICE
San Francisco
Elementary
W.A.A.
Nyoda Club

HARRY, ALICE
Nevada City
Elementary
Glee Club
Siena Club
Home Economics Club

HAWKINS, ALICE
Calistoga
Elementary

HICKS, DORIS
Santa Rosa
Kindergarten-Primary
Bay Leaf Committee

HOWARD, FLORENCE
Porterville
Kindergarten-Primary

KELLY, MARY
Richmond
Elementary
Glee Club
Siena Club

December, 1928

KEMP, VERA
Richmond
Elementary

KOENIG, LUCILLE
San Francisco
Elementary
Class President
Class Treasurer

LORENZINI, LOLA
San Francisco
Elementary
Class Treasurer

McBRIDE, ROSALIE
San Francisco
Elementary
Editor of Bay Leaf
Nyoda Club
Honor Student

McGARVIE, EDNA
Oakland
Elementary
Art Club

MACEY, MARIAN
Oakland
Kindergarten-Primary
Kindergarten Club



December, 1928

KLIPPEN, MARIE
San Francisco
Elementary
Debate Club
Home Economics Club

KRAUSE, HELEN
San Francisco
Elementary
Phi Lambda Chi

LUHMAN, ANITA
San Francisco
Elementary

McCULLOUGH, RUTH
San Francisco
Elementary
Phi Lambda Chi

McGUFFIN, DOROTHY
San Francisco
Kindergarten-Primary
Delta Phi Upsilon
Glee Club

MAGNER, MARGARET
San Francisco
Elementary
Nyoda Club
Siena Club
W.A.A.

December, 1928

MAHARRY, VERNA
Berkeley
Elementary
Scribes Club
Bookaneers Club

MEYER, HELEN
San Francisco
Elementary
Nyoda Club
Phi Lambda Chi
Bookaneers Club

MOYNIHAN, ADRIE
San Francisco
Elementary

MUNK, MADELYN
Napa
Elementary
Phi Lambda Chi
Y.W.C.A.
Asst. Business Mgr. Vigilante

NEE, VERA
Richmond
Elementary

O'HARRA, GLADYES
Richmond
Kindergarten-Primary
Art Club
Kindergarten Club



December, 1928

MARTIN, MARIE
Santa Cruz
Elementary

MILLER, JESSIE
Oakland
A.B. Degree

MULLER, ENID
San Francisco
Kindergarten-Primary

NASH, EMMA
Berkeley
Elementary
College Theatre
Debate Club
T. C. Warblers

NICHOLSON, HELEN
Alameda
A.B. Degree
Bay Leaf Reporter
Phi Lambda Chi

PHILLIPS, MURIEL
Alameda
Elementary
Bay Leaf Board of Control
Glee Club
Phi Lambda Chi

December, 1928

RENWALD, HELEN

Orland
A.B. Degree
Art Club
W.A.A.



December, 1928

ROMANI, ANNA

San Francisco
Elementary
Vice-President W.A.A.
Class Yell Leader
Bookaneers Club

SAVAGE, LUCILLE

San Francisco
Elementary
Yell Leader
Art Club
W.A.A.



SCHMITT, MARIE

San Francisco
Elementary
Art Club President
W.A.A.
Y.W.C.A.

SEARS, ISABEL

Oakland
Elementary
Home Economics Club
Glee Club



SELLMAN, GWENDOLYN

Colusa
Elementary
Ice Skating
W.A.A.

SHELDON, BEATRICE

Berkeley
Elementary
Business Manager Annual
Glee Club
W.A.A.



SIBLEY, MARGARET

Oakland
Elementary
W.A.A.
Glee Club
Home Economics Club

SLEVIN, ANGELA

San Francisco
A.B. Degree



SWITZER, LORRAINE

San Francisco
Elementary
Class President
Class Secretary

TAYLOR, DOROTHY

Martinez
Kindergarten-Primary
Glee Club
Glee Club Pianist



TIERNAN, ANITA

San Francisco
Elementary
Class President
Associate Editor Annual

December, 1928

TIETZ, MARGARET
Petaluma
Kindergarten-Primary
Delta Phi Upsilon
Glee Club
Kindergarten Club

VIERRA, DOLORES
Oakland
Elementary

WALSH, AILEEN
San Francisco
A.B. Degree

WATCHERS, HAZEL
San Francisco
A.B. Degree
Art Club
Glee Club
Orchestra

WUORI, IRMA
San Francisco
Elementary



December, 1928

TREFETHEN, DOROTHY
Oakland
Kindergarten-Primary
Delta Phi Upsilon
Glee Club

WALL, VERA
San Francisco
Elementary

WARHURST, NEMEIRA
San Francisco
Elementary
Nyoda Club
Ice Skating Club

WILKINSON, MARY
San Francisco
Kindergarten-Primary

MACWILLIAMS, JEWEL
San Francisco
Elementary
W.A.A.

May, 1929

ALLEN, HELEN
Oakland
Elementary
Glee Club

BALLARD, ZEBULON
San Francisco
Elementary
Glee Club
Vigilante Reporter

BEER, IRENE
Angels Camp
Elementary
Siena Club
Y.W.C.A.
President Siena Club

BIEDENBACH, ELIZABETH
San Francisco
Elementary
Glee Club

BOLAND, ELIZABETH
San Francisco
Elementary

BRENNAN, CATHERINE
San Andreas
Elementary
Home Economics Club



May, 1929

ANDREE, HILDUR
Berkeley
Elementary

BATILORO, ALICE
San Francisco
Elementary
W.A.A.
Home Economics Club

BIANCHINI, LILLIAN
San Francisco
Elementary
Siena Club
Art Club
W.A.A.

BIRD, BERNICE
Oakland
Elementary
Art Club

BREED, ELSIE
Oakland
Kindergarten-Primary
Executive Board
President Class

BROCKLEHURST, RUTH
Oakland
Elementary
Nyoda Club
Phi Lambda Chi
Y.W.C.A.

May, 1929

BURNES, JEAN
San Francisco
Elementary
Phi Lambda Chi
Art Editor of Annual

CAMPBELL, HELEN
Oakland
Elementary
W.A.A.
Associate Editor Bay Leaf

CANNY, BEATRICE
San Francisco
Elementary
Home Economics Club
Debate Club
Siena Club

CARLOCK, GLADYS
Merced
Kindergarten-Primary

CARNIGLIA, VIRGINIA
San Francisco
Elementary
Glee Club

CATHCART, GLADYS
Oakland
Kindergarten-Primary
Delta Phi Upsilon



May, 1929

CALHOUN, EDNA
Santa Cruz
Elementary
Nyoda Club

CANNON, DOREEN
Millbrae
Elementary
College Theatre

CANTLEN, MARIE
San Francisco
Elementary
Siena Club
Glee Club

CARLSON, ALICE
Alameda
Elementary
Glee Club

CARSON, RUTH
San Francisco
Elementary
Glee Club

CLEMENTS, ESTHER
Berkeley
Elementary
College Theatre
W.A.A.

May, 1929

COLLINS, ELEANOR
San Francisco
Elementary
Registration
Flower Committee

CORCORAN, MARGARET
Agua Caliente
Elementary
Siena Club
Student Body Treasurer

CUNNINGHAME, NELL
Fallon, Nevada
Elementary
Glee Club

DICKIE, GERTRUDE
Alameda
Elementary
W.A.A.
Glee Club

DUNBAR, KATHLEEN
San Francisco
Elementary

DUNNE, DOROTHY
San Francisco
Elementary
W.A.A.
Siena Club



May, 1929

COMPTON, JEAN
Berkeley
Elementary
Library Committee
Glee Club

CRAWFORD, HENRIETTA
San Francisco
Elementary
Phi Lambda Chi
Glee Club

CURRAN, MARIE
Berkeley
Elementary
Art Club

DUBINSKY, LIEBA
San Francisco
Elementary
Bookaneers Club

DUNN, MARGARET
San Francisco
Elementary
W.A.A.
Siena Club

DUNNE, VIRGINIA
San Francisco
Elementary
Siena Club
W.A.A.

May, 1929

ECKERT, MARGUERITE
Orland
Elementary
Y.W.C.A.
Senior Advisor

EGLESTON, GERALDYNE
Oakland
Elementary
Phi Lambda Chi
Class Treasurer
Snapshot Editor of Annual
Editor in Chief of Annual

ERICKSEN, GUDRUN
San Francisco
Elementary
Nyoda Club
Phi Lambda Chi
Acappella Choir
Honor Student

FOGERTY, CLARK
Alturas
Elementary

FREY, AGNES
Byron
Elementary
Art Club
Publicity Committee

GARZOLI, STELLA
San Francisco
Elementary



May, 1929

EGGERS, DOROTHY
San Francisco
Elementary
W.A.A.
Siena Club
College Theatre

EICHENWALD, DOROTHY
Oakland
A.B. Degree
Bookaneers Club
Senior Advisor

FINDLAY, EMROSE
Burlingame
Elementary
Glee Club
Siena Club
W.A.A.

FORD, DOROTHY
San Francisco
Elementary
College Theatre
Bay Leaf Board of Control
Class Treasurer

GALLIVAN, JANE
Hillsborough
Kindergarten-Primary
Kindergarten Club

GATES, MAE
Sausalito
Elementary
Glee Club
Art Club
Executive Board

May, 1929

GREEN, DOROTHY
San Francisco
Elementary
College Theatre
Siena Club
Booster Section of Annual

HACKETT, GRACE
Alameda
Elementary

HARDING, LOIS
San Francisco
Elementary
Publicity Committee
Class President
Glee Club
W.A.A.

HERMLE, MURIEL
Placerville
Elementary
Phi Lambda Chi

JENSEN, MARIE
Stockton
Elementary
Glee Club
Annual Business Staff
W.A.A.

KANE, BARBARA
San Francisco
Elementary
Training School Assistant
Siena Club
W.A.A.



May, 1929

GROVE, LAVINIA
San Francisco
Elementary
Poster Committee
Class Treasurer
Debate Club

HAINES, INEZ
Susanville
A. B. Degree
Phi Lambda Chi
Y.W.C.A.
Honor Student

HEMPHILL, RUBY
San Francisco
Elementary
Phi Lambda Chi
Nyoda Club
Y.W.C.A.

HILL, GLADYS
Walla Walla, Wash.
Kindergarten-Primary
Delta Phi Upsilon
Secretary Class
President Class

JOHANSEN, ANNA
San Rafael
Elementary
Glee Club
W.A.A. President
Bay Leaf Reporter

KAPLAN, FANNYE
San Francisco
Elementary
Associate Editor Annual
College Theatre

May, 1929

KING, GLADYS
San Francisco
Elementary
College Theatre

KOLEN, LILLIAN
Sebastopol
Elementary
Library Committee

LAGOMARSINO, EVELYN
Love
San Francisco
Elementary
Siena Club
College Theatre
Yell Leader

LUNDGREEN, DAISY
San Francisco
Elementary
Phi Lambda Chi
W.A.A.
Y.W.C.A.

McLEOD, MARJORIE
Love
San Francisco
Elementary
Glee Club
Manager Bay Leaf

MARCUSE, SYLVIA
Hayward
Elementary
Annual Board of Control
Nyoda Club
Bay Leaf Editor
Home Economics Club



May, 1929

KLEINHANS, BARBARA
Crockett
Elementary
W.A.A.
Snapshot Editor Annual

LABELLE, PEARL
Napa
Elementary
Siena Club
Lost and Found

LUCEY, AILEEN
Crockett
Elementary
Library Committee
College Theatre
Siena Club

McGLOIN, MARY
Love
San Francisco
Elementary
W.A.A.

MARCH, ERNESTINE
Napa
Kindergarten-Primary
Y.W.C.A.
Lost and Found

MARKLEY, LOUISE
San Francisco
Elementary

May, 1929

MARSCHELECK, NEIVES

South San Francisco
Elementary
W.A.A.
Lost and Found

MINETTA, CHRISTINE

San Francisco
Elementary
Siena Club
Art Club
W.A.A.

MULVIHILL, JOSEPHINE

" " *San Francisco*
Elementary
W.A.A.
Class Yell Leader
Debate Club

MURPHY, VICTORINE

Nice
San Francisco
Elementary
Business Manager of Annual
President Glee Club

NYGARD, VIOLET

Albion
Elementary

O'DELL, MELBA

Oakland
Elementary
Phi Lambda Chi

May, 1929

MILES, BESSIE

San Francisco
Elementary

MITTBY, MRS. MELVA

San Francisco
Elementary

MURPHY, NORA

Crockett
Student Body Secretary
Class President
W.A.A.

MURRAY, ESTELLE

Kentfield
Elementary
Nyoda Club
Siena Club

O'CONNELL, JOSEPHINE

San Francisco
Elementary

O'LEARY, NORINE

San Francisco
Elementary



May, 1929

O'NEILL, ELEANOR
Oakland
Elementary
W.A.A.

PENGELLEY, WILMA
Lomita Park
Elementary
Bookaneers Club

PINNEY, ELIZABETH
Portland, Oregon
Elementary
Scribes Club
College Theatre

POWERS, CONSTANCE
San Francisco
Elementary
College Theatre
W.A.A.

QUIGLEY, IRMA
San Lorenzo
Elementary
Home Economics Club
Lost and Found

RATTO, PAULINE
Sausalito
Elementary
Executive Board
Glee Club
Art Club



May, 1929

PAULO, STEFANIE
Rio Vista
Elementary
W.A.A.
Assistant Business
Manager Bay Leaf

PETERSEN, BEATRICE
San Francisco
Home Economics Club
Glee Club
W.A.A.

POCH, LOUIS
San Francisco
Elementary
Bookaneers Club
Glee Club

PRITCHARD, MARION
San Francisco
Elementary
Glee Club

RAGSDALE, ALWILDA
Merced
Elementary

RIEMKE, ALICE
Crockett
Elementary

May, 1929

RITTER, ALICE
San Francisco
Elementary
W.A.A.

SARVER, ANN
San Francisco
Elementary
College Theatre
Annual Board of Control

SCHULZE, VELMA
Oakland
Elementary
Student Body President
Glee Club
College Theatre

SMITH, ELIZABETH
Oakland
Elementary
Joke Editor Annual
College Theatre

SALOMON, FANNIE
San Francisco
Kindergarten-Primary
College Theatre
Publicity Committee

SQUIRE, JESSIE
Oakland
Elementary
Scribes Club
Lost and Found



May, 1929

ROBERTO, EMMA
Richmond
Elementary
Lost and Found

SCHNITTGER, MARIE
San Francisco
Elementary
Glee Club

SHIELDS, RITA
San Francisco
Elementary
Associate Editor Annual
Scribes Club

SNELL, MARGARET
San Francisco
Elementary
Home Economics Club
W.A.A.

SPENCER, DORIS
Alameda
Elementary
Home Economics Club
W.A.A.

STAIGER, WILMA
Livermore
Elementary
Phi Lambda Chi, President
Glee Club

May, 1929

STEGEMAN, ALBERTA

Oakland
Elementary
Glee Club
Y.W.C.A.

"Bert"

THOMSEN, BERNICE

San Francisco
Elementary
Home Economics Club
Lost and Found

TORWICK, ETHEL

Oakland
Elementary
Glee Club

WHITBY, THELMA

Oakland
Elementary
Y.W.C.A.
Annual Photograph Editor
Phi Lambda Chi
Lost and Found

WILKIN, MARTHA

Berkeley
Elementary

WRIGHT, ELIZABETH

Burlingame
Kinderarten-Primary
College Theatre
Y.W.C.A.



May, 1929

STONE, VELMA

San Francisco
Y.W.C.A.
Bookaneers Club
Lost and Found
Senior Advisor

TENNEY, RACHEL

Oakland
Elementary

VORHEIS, MURIEL

Oakland
Elementary

WILDER, BONNIE

Lodi
Elementary
Nyoda Club
Y.W.C.A.

WOODWARD, GERTRUDE

Porterville
Elementary
Glee Club
W.A.A.

ZEIS, JEAN

Oakland
Elementary
Advertising Manager Bay Leaf

May, 1929

COSGROVE, ANITA
San Francisco
Elementary

KIRKPATRICK, ELLA
San Francisco
Elementary

WATSON, MARIAN
San Francisco
Elementary



May, 1929

DEMPSEY, KATHLEEN
San Francisco
Elementary

TYLER, LULA
San Francisco
Elementary

WINTER, DEETTE
Santa Rosa
Elementary

Seniors whose Pictures do not appear:

Elementary

Anderson, Mildred '28 Fugett, Isabelle '28 Leggat, Willa '28 Meyer, Regina '28
O'Neil, Anette '28 Barwock, Edna '29 Gerson, Rose '29 Johnson, Ruth '29

Kindergarten-Primary

Aronson, Margaret '28

A.B. Kindergarten-Primary

McGuffin, Dorothy '28 Tietze, Margarethe '29

A.B. Kindergarten-Primary and Elementary

Melanphy, Roma '29 Tyler, Lulu '29

A.B. Elementary and Junior High

Haines, Inez '29

Seniors whose Pictures do not appear:

A.B. Degree Students of 1928

Anderson, Esther Cavanaugh, Maude Cullen, Margaret Curry, Janice
Devlin, Anna Fishel, Florence Hextrum, Helen Ingram, Margaret
Johnson, Henrietta Draeger, Lois Law, Charlotte
McCarthy, Kathleen McDonald, Alice Meyer, Loraine
Read, Bernice Perry, Olive

A.B. Degree Students of 1929

Baxter, Alice Brennan, Elizabeth Carol, Laura Christie, Dorothy Davis, Helen
Elson, Eugenia Feenhan, Edithmarian Fisher, Libby Flack, Ellen
Gerstenberg, Alice Hale, Florence Hall, Katherine Haughton, Maidie
Howard, Florence Johnstone, Daisy Kenneally, Alice Liette, Margaret
Luce, Evelyn Lutterkort, Maidie McCarthy, Aileen McKnew, Alice
McSweeney, Josephine Marcus, Blanche Mason, Majorie
Millman, Shirley Nixon, Maude Nyhan, Nora Prevost, Erma
Roberts, Mabel Rose, Thad Russell, Agnes Russell, Helen
Ryan, Jane Sibley, Margaret Simpson, Helen Stewart, Lucile
Tarbox, Virginia Thomas, Celina Thurston, Helen
Tobias, Marjorie Wall, Vera White, Clara
O'Dea, Loretta



Undergraduates



MILLER

WILLIGES

McDOUGALL

LEVIN

CARLSON

Class of December, 1929

Fall Semester	Officers	Spring Semester
FLORENCE SMART - - -	<i>President</i> - - -	JANIS MILLER
PEARL LEVIN - - -	<i>Vice-President</i> -	MARGARET McDOUGALL
MILDRED WILLIGES - - -	<i>Secretary</i> - - -	ELSIE CARLSON
REGINA WERNE - - -	<i>Treasurer</i> - - -	MILDRED WILLIGES
MARGARET McDOUGALL - -	<i>Yell Leader</i> - - -	PEARL LEVIN

The past year has been a happy and successful one for the class of December, 1929. The class has been rewarded for the confidence it placed in Florence Smart at the beginning of the fall semester. Under her capable leadership the class enjoyed a delightful term.

At the beginning of the fall semester the class of December, 1929 held a gala night which took the form of a swimming party, followed by a dinner and climaxed by a theatre party. Although there were many other social activities during the term, this evening stands out as the big success of the semester.

At the beginning of the spring semester, the class of December, 1929, glowing with the success of the past semester and desirous of having another successful term, chose Janis Miller as president. She, with the happy co-operation of the members of the class, brought new success. A number of very pleasant social affairs were enjoyed during this term, but these all pale in comparison to the really important event of the semester, the Senior Formal, which the class of December, 1929 gave in honor of the graduates of May, 1929. The members of the class felt that this dance was a fitting climax to their very happy year.



Class of December, 1931



DONALDSON

ROLAND

DONELON

BOEHM

O'FARRELL

Class of May, 1930

Fall Semester	Officers	Spring Semester
THELMA MOLLOY - - -	<i>President</i> - - -	MARION DONALDSON
MARGARET FABING - - -	<i>Vice-President</i> - - -	LUCILE DONELON
ROBERTA KEILY - - -	<i>Secretary</i> - - -	KATHLEEN O'FARRELL
ROSE MARACCINI - - -	<i>Treasurer</i> - - -	CLAIRE ROLAND
ALICE GARVEY - - -	<i>Yell Leader</i> - - -	LEAH BOEHM

Desiring to uphold the splendid record that it made in previous terms at San Francisco State Teachers College, the Class of May, 1930 chose as its leader Thelma Molloy. True to traditions Miss Molloy and her officers led the class through another happy and successful term.

The first big event of the semester was the Hallowe'en party held at the Wyatt Sisters' Studio. The Studio was decorated to suit the occasion, and a spirit of festivity prevailed throughout the evening. Prizes were awarded for the prettiest costumes and for the funniest costumes.

To climax a successful term the members of the class participated in a theatre party. The guests went to the President to see *In Love With Love*. The fall semester filled with its social events and other activities will be a fond memory to the members of the class.

At the beginning of the spring semester Marion Donaldson was elected to pilot the Class of May, 1930 through another successful term. There is not a bit of doubt in the minds of the members of this class that she filled her position very capably. As well as making her class financially secure, Miss Donaldson proved to be a splendid social leader.



Class of May, 1930



BEEDLE

BINTER

HUMPHREYS

BROWNING

WATT

Class of December, 1931

Fall Semester	Officers	Spring Semester
EUNICE HUMPHREYS - -	<i>President</i> - - -	JACQUELINE BEEDLE
JACQUELINE BEEDLE - -	<i>Vice-President</i> - -	EUNICE HUMPHREYS
VARIAN REMLER - - -	<i>Secretary</i> - - - -	LENA WATT
HELEN GOSCH - - - -	<i>Treasurer</i> - - --	BERTHA BINTER
BERTHA BINTER - - - -	<i>Yell Leader</i> - - -	EDNA BROWNING

The class of December, 1931 has a distinction which can never belong to another class in this college. It is the first class to have a sophomore year. The members of this class are able to look back upon the past year and a half with satisfaction because it has been a time of attainment, not only in academic achievement, but also in the social life of the college.

The outstanding affair of the fall semester was a tea given at the Bellevue Hotel with Velma Schulze, Student Body president, as guest of honor. It was a source of much pride to the class to have as guests Dr. and Mrs. Roberts and several members of the faculty: Miss Levy, Miss Ward, Miss Vance, and Miss Pickard. Eunice Humphreys, class president, was largely responsible for the success of the tea, for she was the hostess of the function.

The most important social event of the spring semester was a "weinie roast" held on the beach at Lands End on April 3. Jacqueline Beedle proved herself an efficient leader on this and other occasions. The class of December, 1931 complains that it hasn't "nearly enough time" to do all that it wants to do in a social way. It is worried, too, that there will not be enough members left at the end of its four years to form a graduating class.



Class of December, 1929



OLSEN

GAINES

McKENZIE

STEVENSON

KENNEDY

Class of May, 1932

Spring Semester	Officers	Fall Semester
LAHOMA ATKINSON - -	<i>President</i> - - - -	RAGNHILD OLSEN
RAGNHILD OLSEN - -	<i>Vice-President</i> - -	ELIZABETH McKENZIE
EMELDA BOITANO - -	<i>Secretary</i> - - - -	BETTY KENNEDY
RUTH REAY - - - -	<i>Treasurer</i> - - - -	EDITH GAINES
HARRY ROGIE - - -	<i>Yell Leader</i> - - - -	BETTY STEVENSON

With one successful year behind it, the erstwhile Freshman Class is already planning gay events for the next three years of its college life. During its first semester at college, May, 1932 early demonstrated its ability to conduct large social affairs. On October 19, 1928, it gave a Freshman Hop in the new gymnasium. Lahoma Atkinson, first president of the class, was accorded much praise as a gracious hostess of the occasion.

During the fall semester, on November 11, 1928, the low freshmen were entertained by their big sisters, the high freshmen, at a tea at the Bellevue Hotel. When May, 1932 itself reached the exalted status of high Freshman Class, its ambitions grew proportionately. A semi-formal dance was given on March 23 in the Palace Hotel. The members of the class attribute the success of the affair to the leadership of "Ronnie" Olsen, president.

During the second semester also, good old St. Valentine was remembered with a party in the new gymnasium, the tables being decked in red and white. From four to eight o'clock the high and the low freshmen danced and played games in the new gymnasium.



Class of May, 1932





Class of December, 1932

1890

Revelations! Forty years had passed since the day of our lady of 1850. A great war had been fought, with the inevitable result that many customs had passed into the land of yesterday. New customs, equally strange, had usurped their places; ornateness gained a momentary advantage over the advancing forces of simplicity.

Here it was the Milady left off three or four of her petticoats, assuming, no doubt, that there was no sin involved in revealing an occasional contour. Had she been willing to let the matter rest there, she might have been less ludicrous, but that most monstrous of all feminine apparel, the bustle, here made its appearance; it was the *extreme* outgrowth of the contour-revealing tendency!

As if the decreasing burden of her clothes left her feeling *unclothed*, she took to wearing fluffy muffs, heavy seal-skin coats, and massive hats adorned at the expense of numerous ostriches!



Spring and summer this miss might be seen with her *Romeo*, pedaling down some dusty "pike" on a bicycle built for two.



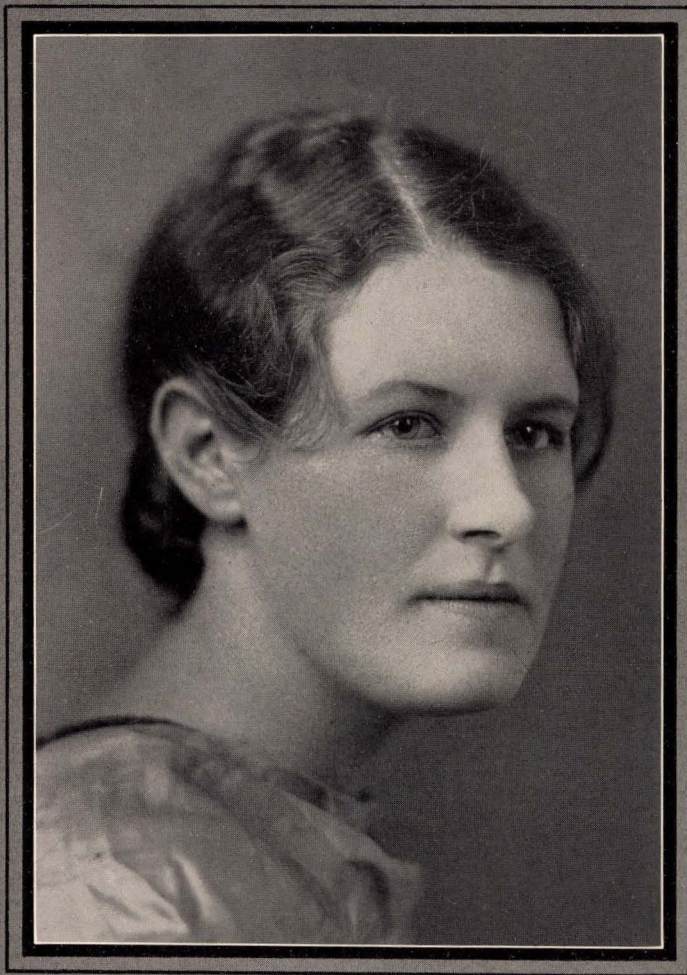
Life on the Campus



Representative Students



Gladys 'Banner
Representative Student
Class of December, 1928



*All the luck in the
world, old girl*

Mae Gates
Representative Student
Class of May, 1929

Mae





Janis Miller
Representative Student
Class of December, 1929



Catherine O'Sullivan
Representative Student
Class of May, 1930



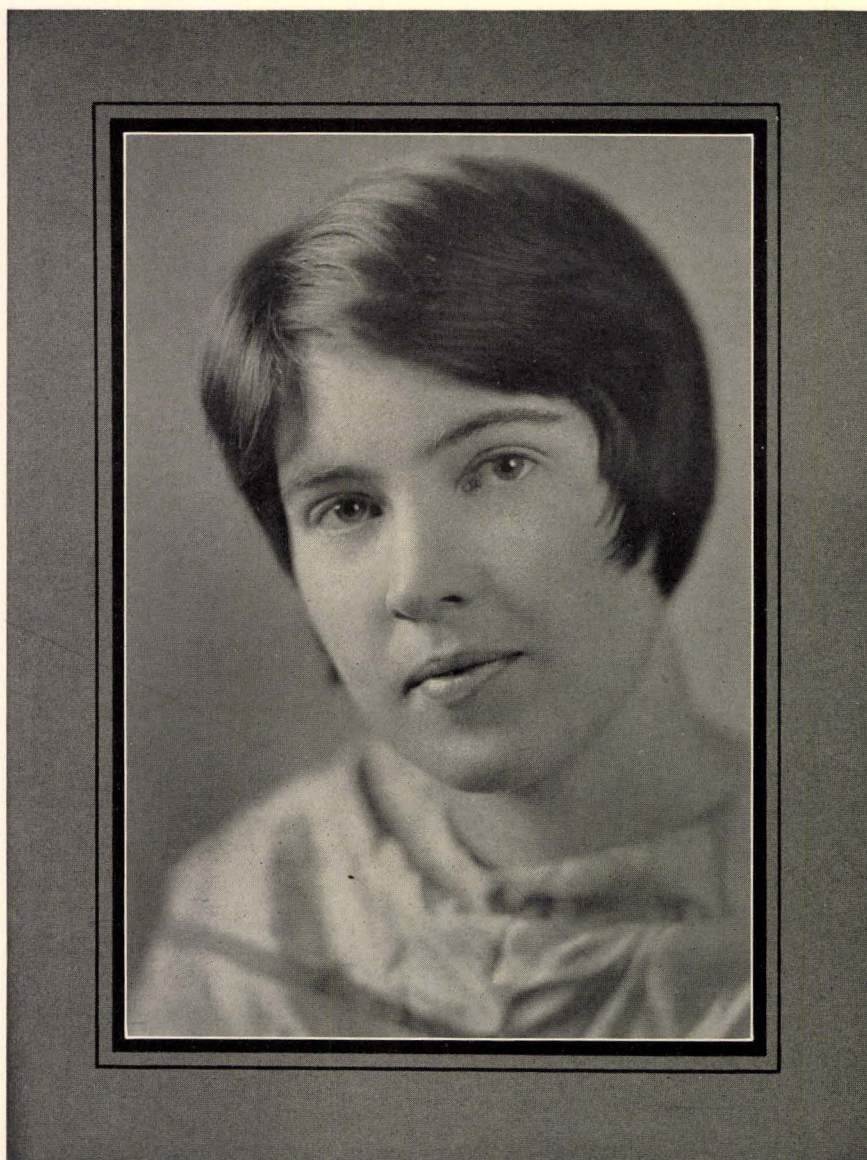


Eunice Humphreys
Representative Student
Class of December, 1931



Ragnhild Olsen
Representative Student
Class of May, 1932

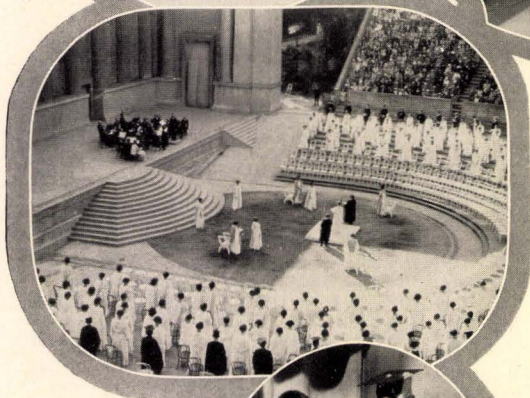
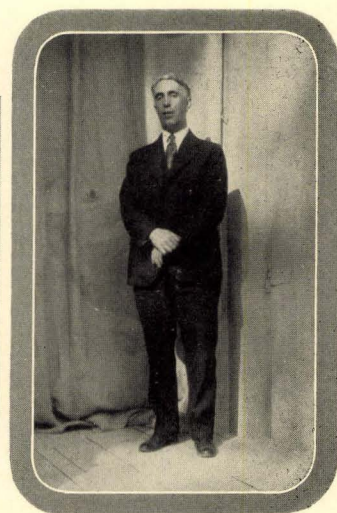




Amy Taubman
Representative Student
Class of December, 1932



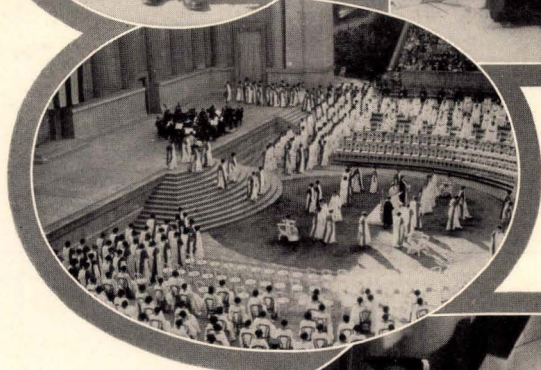
Pictorial



Guild

The Guild, which was begun as a simple ceremony performed in the assembly hall of the old Normal School, has now become one of the most solemn and symbolic pageants in the San Francisco Bay region. The impressive beauty of the ritual has become a cherished tradition in the life of the college.

With the Greek Theater as a setting and the green-clad Berkeley



Guild

hills as a background, the splendor of the pageant unfolds itself to the rich strains of stirring, sacred music. With perfect rhythm and quiet dignity, hundreds of white-clad young women perform the incantations and symbolic formations of the ceremony. The life, the work, and the ideals of the teacher are all embodied in the ritual of the Guild service.



Franciscan Day

On "Franciscan Day," February 14, 1929, the theme of the Annual was announced in a most novel way to the assembled Student Body. Janis Miller, attired as a charming old-fashioned girl, drew attention to a series of posters which announced that the FRANCISCAN would carry out the ideas of "Lavender and Old Lace" and the "Evolution of the School Teacher."

"Jerry" Egleston, Editor of the Annual, explained the reason for the selection of this motif and then presented the members of the staff.

In keeping with the theme the Dramatics Club gave a



1776



1850



The quaint little lady announces the FRANCISCAN



1890

Franciscan Day

series of brief sketches showing the development of the school "marm." Eunice Humphreys and Esther Wacholder portrayed the school mistress of 1776.

Claire Grimes and Vivian Walsh pictured the girls of 1850. The "Daisy Girl" of 1890 was enacted by Fannie Salomon. Elizabeth Boland gave a representation of the maiden of 1902. Margaret McDougall, the girl of 1929, showed the great contrast between the old-fashioned and the modern girl. Betty Pinney, the 1950 girl, an avia-trix, gave a hint as to the startling changes yet to come.



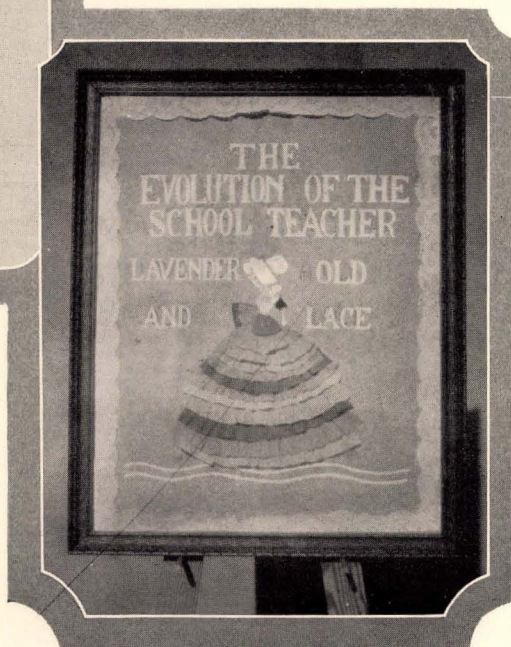
1950



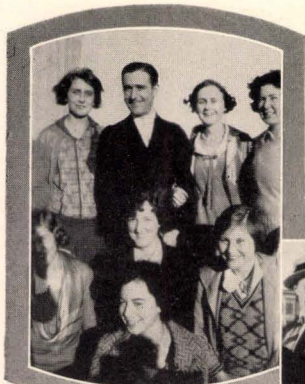
1929



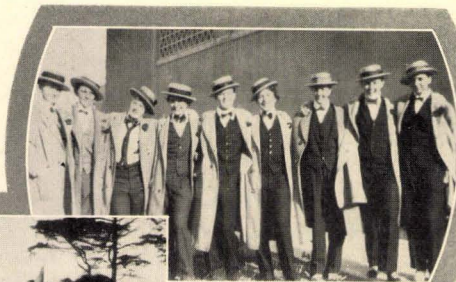
1902



Lavender and Old Lace



Smiles Plus



Fa' Down An' Go Boom



Amen



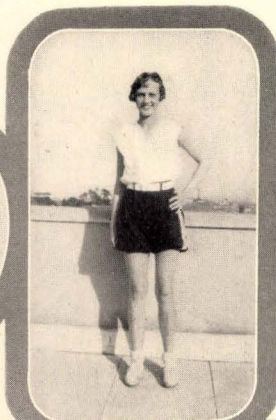
Rallies

A new note was added to our rallies this year. In place of the former type of rally which was held in the old gymnasium, a very impressive Candle-Light Dinner was held in the new gymnasium. During the year there were two such dinners, one in the fall semester, and one in the spring semester.

At the fall dinner the Senior Class were the guests of honor. Following the candle-lighting ceremony, every club presented some unusual or unique stunt. The Art Club's contribution, an imitation of the faculty, was very highly applauded.



"Viv" and Claire



Rallies

The spring Candle-Light Dinner was given in honor of William John Cooper, who was leaving his position of Superintendent of Schools in California to take a position as United States Commissioner of Education. This event seems to be outstanding among the year's activities and will be long remembered when less festive entertainments have passed into the morass of forgotten things.



Floradora



WINDSHIP



HELMS



CLOUD



DENNIS



GREENWOOD



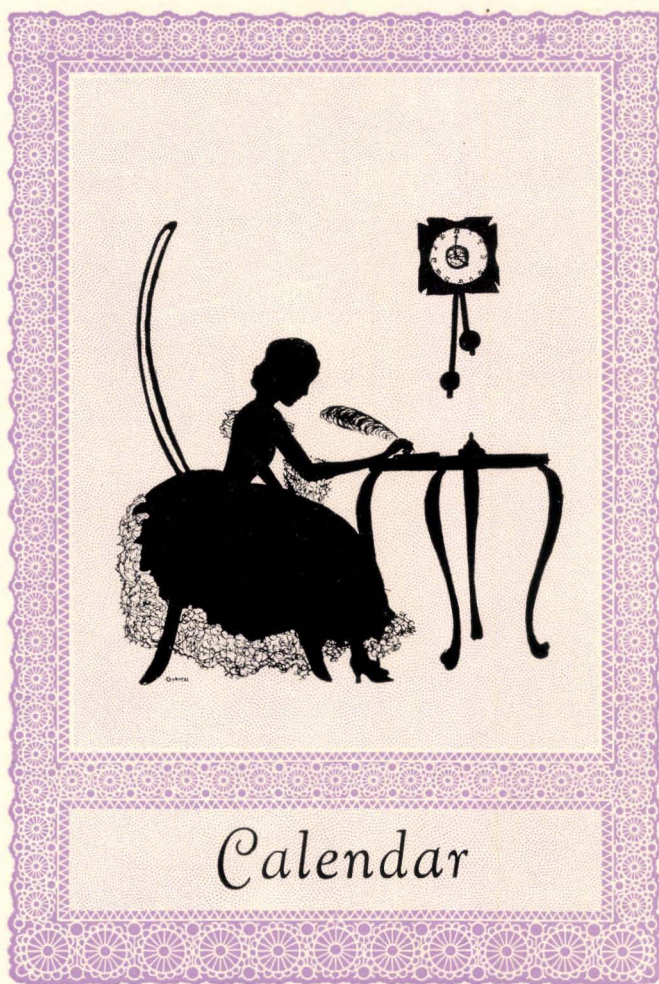
COOPER



MR. LINCOLN WIRT

Campus Visitors

During the past year many distinguished visitors have been seen on our campus. Some of the best known figures in the fields of education and art have been guests and speakers at our college. Among the visitors have been: William J. Cooper, United States Director of Education, formerly the California State Superintendent of Schools; William T. Helms, Superintendent of the Richmond Schools; Charles Dennis, Dean of the College of the Pacific; Dr. Albert Winship, Editor of the *Journal of Education*; Barbara Greenwood, Director of the U. C. at L. A. Kindergarten-Primary Department; Roy Cloud, Head of the California Teachers Association; and Mr. Lincoln Wirt, Western Secretary of the American Federation for the Prevention of War.



Calendar



Full Registration

The Horrified Comments of a Colonial Lady

Returned to Judge the Modern Girl

August 23: The latter part of the Year of our Lord, 1928, is at last upon us. I feel that I must needs set down in mine treasured diary all the events which shall pass during this year.

August 27: Luds! But cities do be places of mightye *Confusion* but withal *Most Interesting*. This day as I did stroll along a wondrous hillye Thoroughfare, an immoderately playful breeze did'st most indiscreetly lift my ruffles *high above my ankles!* A thing which did vex me *Mightyle* and cause me almost to swoon. Lest I be put to

task to keep my hoops down, I hied me around a corner. Thereupon I chanced to gaze full on an inscription which did say that here young Ladies did learn the Manner of Instructing. Knowing what scholarly individuals teachers do be, and thinking to while away an hour or so in intellectual conversation, I did push my way through the heavy doors of a gray ediface, most unbeautiful to look upon. This exertion did tire me *Excessively* and I did long to retire to my bed with my salts!

Odsbodikins! As I did look about me, my brain did go in a whirl of agitated wonder at what mine eyes beheld. Young *Ladies!* I scarce could call them *ladies*, so scantily clad were they, although for sooth, they did belong to the Female Sex. For a moment I thought I should swoon!

But that is not all, my dairy! Not a moment later, as I did endeavor vainly to interpret the use of curious little cubby-holes nailed most securely to a wall, one of these astounding creatures did approach me and address me thus: "*Hey, lend me your pen, will ya?*" I thought my heart would leap from out my bodice. *Luds!* We had not even been presented, and yet she did accost me, the baggage! And pray, how *could* I lend her my pen? Why, my quill I did leave at home in my *escritoire!* Surely this unmaidenly Person did not expect me to carry my quill and ink about with me upon my *person*. But La, wonder of wonders! She did say to me, "Never mind. I've found mine." Then I did see her draw from her pocket a most *Curious Object* some five inches in length, from which she did unscrew the top and write with. *Actually Did Write With It Without First Dipping It In Ink!*

August 29: So intrigued was I with the Marvelous Pen, that this day did'st I scurry back to the academy for pedagogues, an institution which they did term a *Teachers College*. *Zounds!* But such a wild place. Rushing! Whirl-



The Opening Week

ing! Bumping! Shouting! All most unladylike and Uncouth! I did ask someone the why of all this bustle.

"Why, classes begin today," she answered, yelling most Indelicately. Just then the most alarming noises did sound throughout the building, which highly agitated my peace of mind. Then I did hear one exclaim 'twas the "ten o'clock bell," *Grammercy!* Such a disturbing gong, and a *terrible To-Do over nothing!* I gathered up my flounces and fled, lest I be trampled!

August 30: Today I didst follow these Wild and Amazing young Women to an adjacent church, where there was a gathering of no small proportion. A man mightyle distinguished in appearance, Doctor Roberts by name, did address the group. To my great amazement, the young hussies once were serious, so impressive were his utterances!

September 6: On this day was held a festive party for *Freshmen*, as they are called. *Luds!* Such a name for girls. But methinks it suits them well. For they do try to act most like unto a man, and are prodigiously *fresh*. (If dear Mama could see me in the company of such, she'd reward me with a box on the ear for such Unmaidenly conduct!)

In a building wholly pleasing to the eye, termed *Jim Nasium* (probably named after some noted scholar), a Floradora Sextette did appear and 'twas done quite well. The maidens were most sweet and shy, with their ruffles nigh unto sweeping the floor. And their beaux were, La! so handsome! Methought that I had judged them *Harshly*. When *Zounds!* Some one did say, "Doesn't Alberta make a charming *boy?*" Then did I realize that the handsome *Beaux* were girls in men's attire. I blushed so I knew not where to look.

October 3: A vastly pleasing night, this, as I did attend a play presented by the College Theatre, curiously entitled, "Nothing But The Truth." 'Twas done most admirably. But again *Young Women did dress as men*. I blushed behind my fan. In sooth, I do feel my face grow crimson e'en as I do think on them. The brazen wretches wore their skirts *quite up to their knees!* La, me!!

October 4: Really this day does find me in Most Excellent spirit. Today at an Assembly, the *Throstles*, a trio of truly charming damsels did sing, and Oh, how sweetly! 'Twas most entrancing to see their grace of form, and hear the charming melodye of their voices. I was most amazed to see that the rowdy baggages did seem to enjoy these lovely creatures, and that they didst applaud most heartilye, if a little boistrousy.

October 8: Wonder of wonders! Wast walking down a corridor today when I chanced upon a most amazing sighte. A Student Pedagogue did stand before a Prodigiously Astounding small black instrument, a



The Floradora Sextette



The Throstles

part of which she did hold talk. No one did I see near converse most casually. Be-
ed behind my fan. She did the reason of my mirth. I amused me to hear her upon she exclaimed, "Why, I'm talking to Mildred

"But pray, where *is* this bewildered.

"On the other end of the
"And where do that be?"

"Where *Mildred* is!" said and I felt my lips a-trem-
weeping. She seemed so

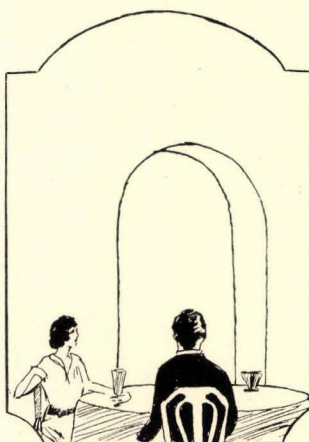
"I'm sorry," said she sweetly. "I didn't realize you knew nothing of the telephone!"

Then she did tell me to hold the thing she called a *Receiver*, and to talk into a queer contraption, termed a *Mouthpiece*. I did, and oh, my life—*IT TALKED!*

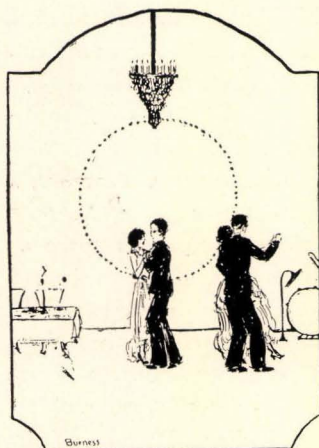
October 11: Did hear much talk this last week of a Student Body tea at the Fairmont Hotel. So today, being the time of the gala event, I betook myself to the tea to see how the young wretches would conduct themselves at affairs of such sort. They had titivated muchly for the Event, but their dresses were again *shamelessly short*, alas! And indeed everylast one of the "Co-eds" ('tis what they're called, though why, I know not), was *as thin as a May pole!*

October 19: *Alas*, these Freshmen! Wast told that they were giving a Hop this night. Upon inquiring the meaning of "Hop," I was told it was "a collegiate name" for *dance*. Thereupon, I attended the affaire, thinking to dance the minuet, but horrors! The young women and beaux did stamp, did whirl, did romp; *for sooth*, they were positively quite revolting. But worse! *The Varsity Drag!* A type of dance most *unspeakable*. I did become terribly agitated and did leave the place hot and uncomfortable, necessitating the dipping of my face into cold water to restore my calm.

October 22: The Glee Club members did dine at the Fior d' Italia this evening. Indeed they did bear themselves right sweetly. Many of their mothers did attend as well. Such sweet whistling that I did hear. It sounded like unto a bird, but Lud! 'Twas a girl who whistled. Not sure was I whether or no to applaud. Papa would say that 'twas *Most Unbecoming* for a maiden to whistle so. But methinks if he could but have heard how lovely it was, he scarce could then be vexed. So I did applaud (but most decorously). Did go to my bed that night right tired, but happy withal.



The Student Body Tea



The Freshman "Hop"

to her *Ear*, whilst she did her; yet she proceeded to ing much beguiled, I titter-
turn to me and question did reply that it most talking to *herself*. Where-
I'm not talking to myself. about the Nyoda Club party." Mildred," I asked, highly

wire, of course," she replied. said I.

she. My lashes drooped, bling, so nigh was I to rude and perplexing.

October 25: Did have day. Did tremble in every the terrace, enjoying much really marvelously beautiful-wilderingly loud and dronedid see a monstrous bird, upon me. I was most horrible to the spot and would have did catch me most opporthe least disturbed. When for to fully understand her, seen no gigantic bird, but use *as means of travel*. chamber today with my ably weak from my fright



The Ice-Skating Party

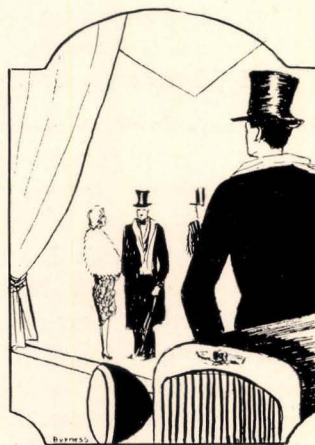
October 27: Such a maddening time that I did witness last night. With a goodly number of girls, I did hie me to a vast building, the floor of which was *most completely covered with ice!* How people do enjoy an ice-skating party I scarce can understand. But in sooth, it seems that many do. Alas! merely to watch did weary me. And how those people did bump and fall, and *get up, and then did fall again!* Really, at times though, it did seem most ludicrous, and I needs must own that I did smile somewhat. But the Hilarity of it all! It did fluster me so. And in the wild scramble of making merrie, the flounce of my lavender taffeta did become most sadly ripped. *La!* I must lay down my pen and retire to my bed, for half dead am I with ennui.

November 3: A formal dance in the Gold Ballroom of the Fairmont Hotel I did next attend, and 'twas indeed a grand company. And how entrancing the young ladies did look. Ruffled silks and taffetas did come *to their ankles!* Really, for once did I feel quite as at home among them. Methought that I should like to dance, for 'twas most intolerably dull to fidget with my kerchief. One young blade did stare at me so immoderately, he did cause me to drop mine lashes, and grow scarlet in the face. Perchance he would ask me to dance. And Lud! why shouldn't he?

But when the music did start! No sweet strains of the Minuet did catch mine ear. 'Twas most *Astounding*. Such loud *Uncouth* Discord! I scarce could stand it. I did put my hands quickly to mine ears to shut out the monstrously harsh sounds of it. In my flurry to depart, I did drop my fan. The young blade who had so stared at me did pick it up, but *alas!* I was so vastly agitated, I scarce could thank him.

November 6: I can scarce bring myself to write what I did see to-day. So shocked was I that I e'en forgot to swoon. I did wander into the place called the *Jim* and did see many women playing *Unladylike* and the *Rough-*

such a *Terrible* fright to-limb. Wast strolling along the view of the Bay ('tis ful), when I heard a being noise. Looking up, I apparently swooping down rified. I did become glued swooned, but a pert Miss tunely. She seemed not in I did become calm enough she did explain that I had an *Airplane* that people did
October 26: Kept to my salts, being still immeasur- of yesterday.



The Student Body Formal



The Glee Club "Gayeties"

est sorts of games. But 'twas not the games that did horrify me so. 'Twas the costumes that did clean take away my breath. *Lud*, methinks the wretches should retire to their chambers if they do wish to wear such unmaidenly attire. Why, *their stockings did reach a point scarce higher than their ankles!*

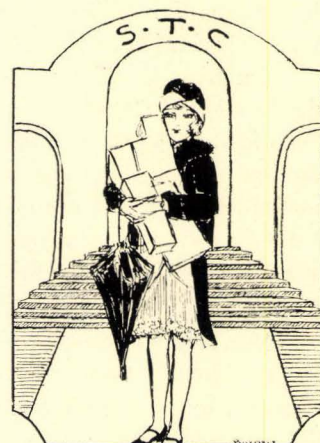
November 15: Oh la, the Glee Club *Gayeties* to-night. Much sweet singing there was and a number of dances. The audience did receive the presentation most joyously, but they did applaud in particular for one most captivating number, "So Long, Mary." I did feel much gratified to see that men, and not the women, did take the men's parts on this occasion.

November 24: Thanksgiving Day! And truly I am thankful for my *Hoops*, and my *Ruffles*, and my *Maidenly Ways*.

December 1: The hustle and bustle which does always appear so noticeable and disturbing, is becoming prodigiously and immoderately evident. *Rushing, rushing, rushing. Packages, packages, packages.* Christmas does now appear, and these Astounding young women do undertake all their own Christmas purchasing, and that they do *Unchaperoned!* Upon hearing so much talk of the shoppes down town, I did take mineself there one pleasant afternoon. *And lo and behold!* Such a sighte did greet mine eye. All the toys of fairyland did walk and dance in the shoppe windows. I did marvel, and was speechless with admiration. Such undreamed of wonders. And they tell me that the mere pressing of a button does send them all into motion, and does stop them at will!

December 20: The candle-light dinner in the place called the Jim this night. 'Twas most sumptuous. And beautiful Christmas decorations did shine out most Stupendously! It made me to think on many another Christmas that I did spend, and I was most happy. E'er the dinner did commence a truly impressive candle-lighting ceremony did take place. My heart did stand still with the beauty and all! "Pat" Schulze lighted the first candle. In due time the word was given and each maiden did light her candle. It was the most *Excessively Impressive* sighte I did ever set eyes on.

Afterwards many of the clubs did give entertainment. One group did do a caricature on the faculty, but Methinks *such actions do be Highly Indecorous*. Another group did show the silhouette of a fuzzed wanton in a *shameless bathing suit*. It scarce came to her knees, and she wore no stockings! *Zounds!* I did have to quickly stuff my 'kerchief in my mouth, lest I moan aloud most mightilye, so great was my chagrin. Why for an act not nearly so unmaidenly I have heard Papa say to me "Hie you to your chamber, pert Miss!" And have wept for an whole night, uneasy of conscience.



Christmas Shopping

December 22: Graduation at Everett Junior High School last evening was of the utmost perfection. Quietly Beautiful music, Stately processional, and an equally stately recessional did make me feel most solemn. I marvel that the whole ceremony was so wonderfully and unbelievably refined and dignified. The graduates did look very happy, and much touched by the occasion. 'Twas hard to think on the trying fact that they, for sooth, were the same people who had been so Noisy and Boistrous such a short time ago.

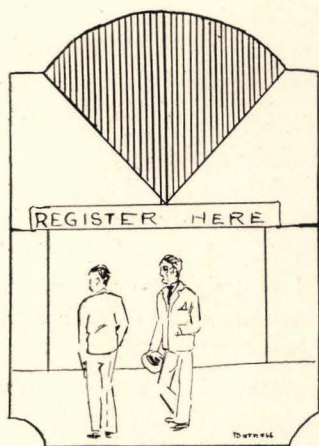
January 7: 'Tis registration day again, and another group of Freshmen are come. I wonder if they be as noisy as the other group. *Lud*, I do hope 'tis not so!

January 8: There is a flurry of interest among the students because a new instructor has come to the college, one Mr. Meiggs by name, I believe. Methinks *this sort of To-Do is entirely unbecoming a virtuous young Female.*

January 9: Classes did begin today. More excitement was caused when 'twas learned from the registrar's office that there were *THIRTEEN MEN STUDENTS* at the college. For sooth, I hope not *all* of them are betrothed!

January 10: A reception was given for the new Freshmen. They did seem to make quite a commotion about falling down quite hard. "*Go boom*," they do call it. *Such nonsense!* There is another word they do use most frequently. I cannot recall it now, but 'tis most Rough and Revolting. Oh yes, 'tis "*Whoopee*." I know not what it means, and *Zounds!* I doubt much that they do either.

January 28: Another candle-light dinner was given tonight. 'Twas similar to the first and just as charming. The dear Floradora Sextette was given again. It did make me exceedingly happy, but I can not help but turn crimson when I do see young ladies prancing about in men's attire.



Spring Registration



Commencement

Several after-dinner speeches were applauded most heartily. I was in wonderful spirits, for I did think this evening destined to be well nigh perfect, but I might have known better. A very pretty young woman (whose name I later did learn was *Lagomarsino*) brazenly stood on a *Table!* I scarce could believe mine eyes! Then everyone did stand up and yell, actually yell. "*Rah! Rah! Something or other!*" I was so horrified at the Terrible To-Do, that I swooned, *this seeming to me the only means of escape from an Embarrassing Situation.*

February 2: The Glee Club did hold its dinner dance at the Western Women's Club. 'Twas a most magnificent affair, and truly much to my liking!

February 13: Such a commotion as did occur at the post boxes (those queer little cubby-holes I once before

did mention) today. My, gather my skirts about me Dignitye as I could in the and 'twas hard to walk ed there, and with my difficult. Then someone *Bay Leaf* is out!" I turned amazing, astounding, re-reading a paper, which is young ladies of refinement. then. But no! Further pain learned later that, not only read the paper, but that

February 14: I know not ings of this day. It does day was called "Franciscan Day." At assembly a bewitching pretty blonde lady in hoop skirts and pantalettes like mine own did announce the theme of the Annual. And ah, mine heart, such a charming theme. 'Twas "Lavender and Old Lace." In keeping with the theme a lovely program was given.

Then, dear me! There was that horrid discord they call "music" now. A reckless young vixen did dance out with her wild noisy steps. "The Girl of Today," she was called. Next 'twas announced, "The Girl of Tommorrow." *Gathering up my quilted petticoat, I fled, lest I swoon again.*

March 8: "Did'st hear of a Student Body tea which was held at the Fairmont Hotel yesterday. I was much too fatigued to attend, spending the entire day in my chamber, *not even having strength to remove my curl papers!* I heard that it was a marvelous delightful affair. Much to the joy of the guests one Gertrude Atherton did speak. I do hope that the young women did forget their fripperies long enough to attend this rhetorical discourse with courtesy!



The Student Body Tea



"Franciscan" Day

'twas most alarming. I did and walk with as much opposite direction. *Lud!* gracefully. 'Twas so crowd-hoops, 'twas exceedingly shouted, "Hurrah! *The* and what did I see? Those volting young women *were* uncommonly vulgar for Would that I had swooned was in store for me. I did these young women they did *also* write it.

how to record the happen- seem such a mixture. To-

March 13: The members of the Class of December 1929 did attend a dinner last evening. *Zounds!* Such a round of gaieties these young people indulge in. I wonder they aren't weary of all this rakery and frolic.

March 14: At present the whole college does seem to be interested in pictures. In all the confusing corridors are monstrous signs. In sooth, I do hope that if these young women do have their pictures taken for their annual (or Amazing journal in which they do record the Year's Events), that they will stand up straight as becomes a decorous young lady, and that *they will pull their skirts down over their shameless knees!*

'Tis most remarkable how they do take pictures now-a-days. No longer do Ladies have to sit fidgeting for days and days before the portrait painter in order to get a re-

production of themselves. thing called a "camera" and 'tis most Wondrous Strange. be much in demand too. I whom they do call a "photoquite often of late. I do be campus and in this Young my fan, that I may hide my me a trifle!

hear the strains of my below the sounds, and oh, thought that I was dream-lady was teaching the tiny children. I did watch "Hold your skirts out wide, say to a little girl who had hardly any skirt at all.

"But I can't; it isn't wide enough," the little one did answer.

Just then I walked behind the teacher and did slip out quickly, lest she would'st see me. I marvel at the Audacity of the Young Children, and would feel loath to instruct such *Impertinent and Uncivil Rascals!*

March 16: Today were pictures of Representative Women taken. Every class did select the girl who did best typify her group. It set my heart aflutter with joy to see that *Virtuous damsels* were selected. I marvel that the conceited prigs had sense enough to choose aright.

Two pictures then were taken of every girl: one in her own highly Indelicate costume, and (because they did something with greater Dignity) one in a costume of mine own time. Indeed, methinks they would do well to wear some pretty pink embroidered neck-ribbon for their pictures.

March 17: Today the Immoderately lively Seniors did pose for pictures. *But alas!* The *tin-type maker* did neglect to place neck-clamps beneath their ears and methinks much Dignity will be lacking!

March 18: The Glee Club did hold its last dinner of the semester this night. Victorine Murphy, president of the club, and also an Esteemed member of the graduating Class, did give her farewell speech, truly a Most Notable piece of discourse.

March 20: Verily, the Annual Office is humming with activity. Methinks they must be having *highly agitating* days!

April 1: Today, being *April Fool's Day*, one young lady did contrive to sprinkle a small quantity of pepper in her companion's victuals, thereby throwing her into a frenzy of sneezing. 'Twas indeed most amusing, and did

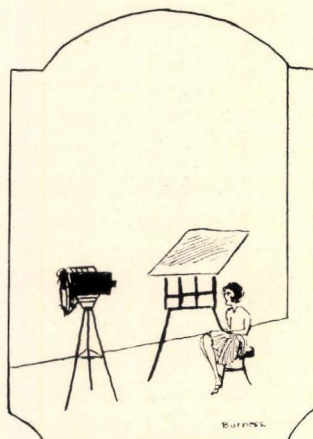


Picture Week

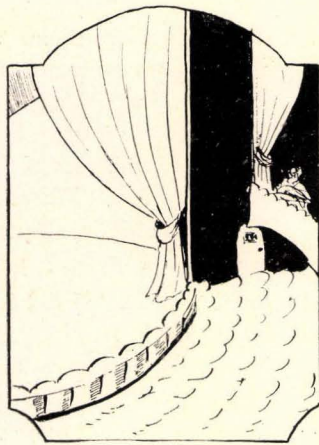
Now just a little click of a the picture do be taken. Ah

Pictures of the campus do do see a tall blond fop, tographer" around here interested in pictures of the Man. But *Lud!* Where is blushes? He does flutter

March 15: Today didst loved "Minuet." I did folhappy day! At first meing. A charming young "Minuet" to a group of and listen enraptured. Marjorie," the teacher did



Representative Women



The College Theater

did become so excited as to *applaud* quite spiritedly! In sooth, I'm glad that Papa didn't see me.

April 6: Such a day! *Lud!* *Such a day!* I am indeed tired. I'm almost dead; yet I can but smile. (Oh, just a very little smile!) Today the third joint Annual Play Day between San Francisco State Teachers College and the San Jose State Teachers College did occur at the Fleischacker Play Field.

Such a crowd! At times it did become so intolerably warm that methought I must *stifle*. About two hundred girls did take part in the Events. And the games they did play! Alas, didn't even know the names of them!

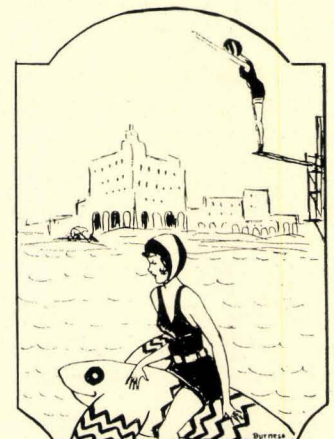
But the queerest thing did happen. In sooth, when I do think of it, it does provoke me to laughter. A girl did climb upon a board that was high above the water. Then she did poise herself and jump head first. Methought *she surely would kill Herself*.

Of course, I swooned. At first I did feel people trying to revive me, but I had not the power for to speak to them, nor to help myself. As in a dream I did hear several horrified voices say, "For goodness sakes, Betty, what are you going to do?"

"Well, she'll never come to in all those contraptions, and if I have anything to do with it, *SHE'S COMING TO!*"

I finally did revive, but when I did see myself, I did nearly swoon again! *I was attired in one of those revolting athletic costumes*, and (though I wouldn't want Papa to hear me say it), it did feel most Comfortable indeed! The girl, I did learn, was merely diving and was quite Unharm'd.

April 8: The Seniors do be wearing their new caps. Red and white are they, with tassels on them. In sooth, the seniors do look Most Gay and Merrie.



The Swimming Meet

set everyone in the dining place, known as the "cafeteria," a-laughing outright.

Many of the students did return from the Easter holidays with new spring fineries, but *alas!* All were *shockingly lacking in Length and Fullness*.

April 5: To the College Theater play tonight, *Disraeli* by name. 'Twas a most stupendous play, and 'twas, indeed, well-acted. To my amazement I did discover that *Disraeli* was one young woman known as *Mollie Levin*.

The Everett Junior High School auditorium was filled to overflowing. The audience did seem Greatly Delighted with the production and the players. Was indeed taken with *Disraeli's* acting, but I did blush when I did think of her taking a man's part. At one time I

April 13: At the Palace there did occur the Student Body Formal tonight. 'Twas most Prodigiously Elegant and Fetching. Orchids and fragrant gardenias didst make such charming decorations. The gowns of the maidens were uncommonly sweet too, of sprigged muslin, or some such, and reached most modestly *almost to their Ankles*, and *Lud!* The young puppies who accompanied them were most Gallant that 'twas indeed a pleasure to view.

April 20: Wast told that Guild practice was today to be held in Berkeley at the Greek Theatre. Indeed the ferry boats must be vastly crowded with all the young women. Methinks the college would do well to charter a boat for the Occasion. Didst hear that these young people make most gay on the ferryboats, and do laugh Most Lustily. *I would remain closeted for a week, by Papa's bidding, if I ever so Uncouthly conducted myself in a Public Place.*

April 25: The Natural Dancing class did entertain a goodly number of visitors today. 'Twas a most Stupendous Spectacle. The dancers did look like Grecian Maidens, Amazingly Attired in scanty costumes. Soft and dainty were the colors, and their sandals were of these same Entrancing colors. On the whole 'twas a Most Intriguing sight to behold!

April 27: Another Formal. But in faith, 'twas the loveliest of them all. Indeed the Young Ladies and their Beaux were Most Elegantly attired. 'Twas the Senior Formal. But withal the Gaiety and Merrymaking one did see there, a tiny trace of sadness. And for sooth, who could not but be sad on such a farewell Occasion? Perhaps 'twas the last dance whereat they all should gathered together be. I did feel really quite moved to Melancholye.

April 29: *Odsbodikins! Such a hurry and flurry there is about the place.* Indeed such agitation does quite fluster me, leaving me very hot and ruffled. Final examinations do be in progress, 'tis said, and there do always be Much Flustration at such a time.

May 5: Mine pen quivers in my trembling hand. I do be so moved I scarce can write. Today did I sit in the Greek Theater with the beauty and the glory of the hills all about me, waiting.

Presently did I hear sweet music, soft, soft, then louder and *Louder*, till the very hills did echo its Stately Glory!

When the curtains were drawn back, there didst file out line after line of stately, white-clad figures. Shining heads there were, bowed in the sunlight. Then a blast of Music and the heads did lift. Faces, faces, seas of faces, young, eager, filled with the beauty of Life. I did think of angels. (*And I had once called them baggages!*)

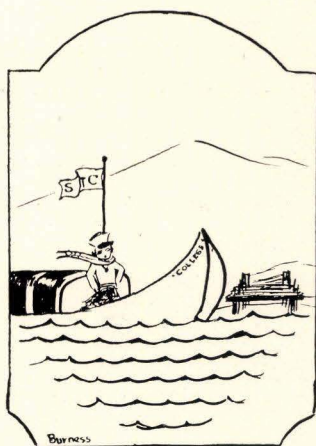
Then were they singing, singing most Sweetly and Gloriously.

"I belive—I believe—I believe—"

And methinks they *did believe*. One did see it in



Student Body Formal



To Guild Rehearsal



Commencement

their faces. I could see it e'en though mine eyes did fill and overrun with tears.

May 6: "*The FRANCISCAN* is out!" shouted multitudes of hilarious "co-eds." Rushing feet and gay young voices did fill the many halls. These same young "co-eds" didst express their glee o'er the long-awaited journal in Up-roarious, but altogether Unladylike phrases. Methinks—Methinks they would grow faint from all the hustle and bustle, but in truth they appear to enjoy it as much as do I a quiet hour of uplifting melodye on my beloved Harpsichord. . . .

At this point the diary of the old-fashioned maiden ends abruptly. We are led to believe that her finer sensibilities were injured by the coarseness of our modern existence. Apparently she has returned to the spiritland from whence she came, and has seen fit to leave only elusive memories of her delicate laces and rustling taffeta. The only tangible evidence of her presence is the faint fragrance of lanvender which still clings to the pages of this mysterious manuscript.

EDITOR'S NOTE:

We have made no effort used the exact terms, the the obsolete spelling, and tions of the young lady of of this diary not to take of- "baggages," "wantons," but to remember that once the same significance as do



The FRANCISCAN

to edit this diary, but have curious sentence structure, the unexpected capitaliza- 1776. We beg the readers fense at such names as "prigs," and "wretches," these names carried much "flapper" and "co-ed" today.



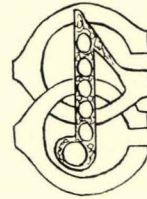
Music



VICTORINE MURPHY
President

Nie

The Glee Club



"Music, when soft voices do sing, vibrates in the memory," sang the poet. And reverberations of Glee Club choruses will echo down the years, not only for those fortunate ones who are members of the club, but also for everyone in the college who has enjoyed their programs.

Although singing is the basic purpose of a Glee Club, this one does not limit its activities to "do-re-mi," as a bare list of the events of the past school year demonstrates. Dinner-dances, club dinners, operettas, "The Gayeties"—all were outstanding successes.

Founded nine years ago by a small group of interested students, the Glee Club has grown with Miss Levy's support and direction, until now it is the most popular club, in point of numbers, in the college.

Officers

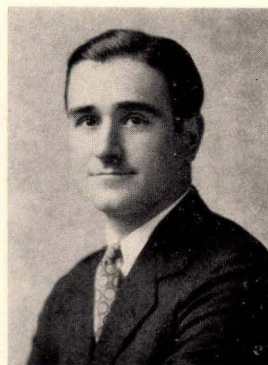
VICTORINE MURPHY	- - - - -	<i>President</i>
JANIS MILLER	- - - - -	<i>Vice-President</i>
MARION PRITCHARD	- - - - -	<i>Secretary</i>
ALBERTA STEGEMAN	- - - - -	<i>Treasurer</i>
MISS LEVY	- - - - -	<i>Director</i>



The Glee Club

Orchestra

The college orchestra made its debut at the first play of the semester which was given by the College Theater on October 3, 1928. The orchestra, which had originally four members, now numbers twenty-nine. This orchestra has contributed much to the social life of the college. All credit for the success of this musical organization is due to Mr. Knuth, the enthusiastic director.



WILLIAM KNUTH
Director

Members of the Orchestra

Violin
Esther Gilbert
Elma Richards
Gladys Richardson
Amy Taubman
Ethel Torwich
Carolyn Wade
Vivian Walsh
Allan Wyatt
Viola
Leah Boehm
Myrie Piphen
Cello
Chester Beck

String Bass
Emma Nash
Frances Stelzner
Clarinet
La Verne Bigcraft
Bessie Harband
Charles Kelley
Lillian Kolen
Harry Rogie
Saxophone
Helen Langren
Adolph Tewes
Oboe
Alton Cohen

Cornet
Florence Lee
French Horn
Margaret Hodge
Margaret Higginson
Trombone
Fred Hage
Drums
Velma Schulze
Dorothy Williamson
Piano
Catherine O'Sullivan
Audella Wyatt



Back row: ALLAN WYATT, TAUBMAN, PLUTTE, O'SULLIVAN, ROGIE, KELLEY
Front row: AUDELLA WYATT, TORWICK, WALSH, WILLIAMSON, SCHULZE, KOLEN, STELZNER, BOEHM

The Glee Club "Gayeties"

Color, movement, rhythm, humor, melody, novelty—all are summed up in the one word, "Gayeties." The Glee Club, which is famous for its excellent programs, lived up to the highest expectations in the presentation of its "Follies" on Thursday, November 15, and Friday, November 16, in the Assembly Hall. The co-operation of the St. Ignatius College Glee Club was an invaluable asset which contributed to the success of the presentation.

The college orchestra, under the direction of Mr. William Knuth, played several well-received selections: "The Black Rose," Overture by Brockton; "Indian Love Lyrics, Number Two" by Furden; "The Conqueror," overture by King; and waltzes from Ram-bert's "The Student Prince." At that time the orchestra consisted of sixteen pieces; it was still in its infancy. Since then it has grown with increasing rapidity.

One of the loveliest numbers on the varied program was that entitled "Bits from Japan." The "Japanese Love Song" and "Japanese Maiden" were rendered by members of the Glee Club, who received much approval for their quaint and picturesque interpretation of the charming Nipponese songs. These and a soprano solo by Peggy Hopkins accompanied by Alvina Heuer Wilson were much commended. No college program would be complete without a whistling solo by Anna-Marie Johansen. Anna whistled, as only Anna can, "Carmena" by Lane-Wilson and "Song of Songs" by Moya.

Mrs. Sarah Scott, natural dancing instructor, charmed the audience by her interpretation of two solo dances. The first was Chappé's "Serenata Morisca," and the other was a creation by Ruth St. Dennis, called "Choreography."



"The Flirting Song"

The Glee Club "Gayeties"

When did the "Chocolate Soldier" ever fail to win an audience? With Mrs. Florence K. Cohn and Frank Ray singing selections from it, it all but "brought down the house." Rivalling the "Chocolate Soldier" in enthusiastic reception were Mollie Levin's monologues. "Billey Brad and the Big Lie" was the title of her first comic selection. The second was "Seeing the Family Off," which she gave by request. Dressed as very dudish dandies, Fannie Salomon and Vivian Walsh next contributed an exceedingly lively tap dance. "Las Senioritas" by Moszkvioski and a Dutch air, "The Windmill," followed the "Walsh and Salomon" number.


Perhaps the climax of the evening was the genuine "Follies" number of "So Long, Mary," which was given by Velma "Pat" Schulze and Company. The "Company" consisted of very collegiate and handsome young men from St. Ignatius College. After seeing this group and hearing the chorus sung by the St. Ignatius Glee Club, many fair members of the San Francisco State Teachers College sighed for a male glee club on the campus, or at least, a male quartet. This development still hovers in the future, however.

Chorines were not lacking on the program. They appeared in "Flirtations," which was led by Dorothy Asher. The thirteenth and final number on the brilliant program was a cantata, "The Seasons," by Keiserling, rendered by the Glee Club. This was one of the loveliest of all the offerings of the evening.

Undoubtedly much of the success of the program was the result of Miss Eva E. Levy's capable and enthusiastic direction. Mrs. Sarah Scott, who was in charge of the dancing, and Dorothy Taylor, accompanist, together with the assistant accompanists, all contributed to making the "Gayeties" a most finished and memorable affair.



Bits from Japan, Holland, and Spain



A Silhouette

*The moonlight casts your shadow on the wall,
The dainty silhouette a silv'ry thrall;
Your goss'mer fan in slender grace upheld,
Your laughing eyes beneath thick lashes quelled. . . .*

*The fragrant flowers worship as they sway,
The whisp'ring winds their music softly play
And all the world is hushed to wondrous thought,
As on the wall the silhouette is wrought. . . .*

*This glimpse of you I now do treasure dear,
In light and shade an etching bold and clear,
And deep in heart I hold in sacred place
This memory of Lavender and Lace.*

—CIWA GRIFFITHS.



Dramatics



REGINA WERNE
President

Dramatics Club

Dost act? Dost design scenery? Dost paint the same? Dost make posters? All these, and more also, are the activities of the College Theater. Whether one has speaking role in a play or not, one can take active part in the work of this organization.

Although once a mere "club" like all the others, the College Theater, in the fall of 1928, graduated to the ranks of an "extra-curricular" activity. One unit of college credit is now given for participation in the club.

To develop dramatic talent, to bring out latent ability, to present the kind of play that all can enjoy, and to create an appreciation of dramatic art: these are some of the fundamental aims of the group. Miss Casebolt is the inspiring sponsor the club.

Fall Semester	Officers	Spring Semester
GLADYS KING - - -	<i>President</i> - - -	REGINA WERNE
EMMA NASH - - -	<i>Vice-President</i> - - -	CONSTANCE POWERS
DOROTHY FORD - - -	<i>Secretary</i> - - -	DOREEN CANNON
REGINA WERNE - - -	<i>Treasurer</i> - - -	EUNICE HUMPHREYS



Back row: KAPLAN, WACHOLDER, SMITH, MARTIN, REID, BINTER, CASEBOLT, GARRATT
Front row: GRIMES, WALSH, SALOMON, WERNE, WRIGHT, HUMPHREYS, FORD, KING, JAEGER

Nothing But The Truth

Nothing But The Truth, a three-act comedy by James Montgomery, was presented by the College Theater on the evening of October 4, 1928. Whether the blunt and unvarnished truth is desirable was the deftly handled theme of the play.

Robert Bennet, for the sake of Gwendolyn Ralston, made a bet for ten thousand dollars that for twenty-four hours he would tell nothing but the truth. And where did the money for the bet come from? It was the money which his fiancée had collected for hospital subscriptions. Bennet believed that he could double Gwendolyn's money in stocks, but instead he bet with her father and two other unscrupulous stock speculators that for twenty-four hours he would tell nothing but the truth. Throughout the entire play, the audience sympathizes with Bennet, as he is determined to win both the bet and the girl.

Gladys King, as *Robert Bennet*, once more proved to the San Francisco State Teachers College audience that she is an actress of marked ability. Sharing equal honors with her, was Eunice Humphreys as the charming *Gwendolyn*, Elizabeth Boland, Mary Connolly and Virginia Reid were excellent as the stock speculators. Others in the cast who deserve praise for their splendid work were: "Connie" Powers, Elaine Garratt, Doreen Cannon, Gladys Banner, Edith Wacholder, and Regina Werne.

The assembly hall was packed, and judging from its enthusiastic response, the audience thoroughly enjoyed every minute of this hilarious comedy. Much credit for the success of the play was due to Miss Casebolt, the College Theater's director.



ELIZABETH BOLAND

GLADYS BANNER

EUNICE HUMPHREYS

GLADYS KING

The Man from Home

Cast of Characters

CLAIRE GRIMES	- - - - -	<i>Ethel Granger-Simpson</i>
ORPHA CORRIGAN	- - - - -	<i>Pike (the Man from Home)</i>
FLORENCE WRENN	- - - - -	<i>Horace Granger-Simpson</i>
REGINA WERNE	- - - - -	<i>Grand Duke of Russia</i>
DOROTHY FORD	- - - - -	<i>Valet to the Duke</i>
CONSTANCE POWERS	- - - - -	<i>Lady Creech</i>
ELIZABETH BOLAND	- - - - -	<i>Lord St. Aubyn</i>
MRS. JUDSON	- - - - -	<i>Russian Refugee</i>

The Man from Home, a popular Booth Tarkington comedy, clever of plot and well-acted, was the play presented by the College Theater on December 6, 1928. Directed by Miss Casebolt, the play showed in every detail the results of expert and careful coaching.

The scene of the play is laid in a hotel overlooking the bay of Naples. An American brother and sister, Horace and Ethel Granger-Simpson, are visiting a royal family in Italy. The Honorable Lord St. Aubyn, an Englishman, also in Italy, desires to marry Ethel because of her wealth. A marriage cannot take place until Ethel's guardian gives his consent. To the surprise of all, the guardian, who is "The Man from Home," appears on the scene. He is not an old man, but a gallant young hero who captivates the fair Ethel.

Orpha Corrigan, as Pike, "The Man from Home," donned in masculine attire, and playing her last role before a San Francisco State Teachers College audience, made a dashing hero. Claire Grimes, who will be remembered for her charming portrayals in *Babs* and *You and I*, ably played the part of Ethel, Pike's ward. Regina Werne, noted for her character parts, was the Grand Duke of Russia, while Mrs. Judson gave a splendid interpretation of a Russian refugee. Others in the cast who did exceptional work were: Elizabeth Boland, Fannie Salomon, Mary Connolly, Constance Powers, Florence Wrenn, Elizabeth Wright, Mrs. Vogelsang, and Dorothy Ford.

The stage settings were unusually good. Emma Nash and Elaine Garratt had charge of the scenery, while Claire Grimes managed the stage decorations. Eunice Humphreys selected the costumes. The audience, from its amount of applause, thoroughly enjoyed this Booth Tarkington play for its style, humor, excitement, and delightful love story.

The Youngest

"They came, they saw, they *were* conquered."

On the evening of February 8, an expectant audience watched the curtain rise on *The Youngest*, a mirth-provoking three-act comedy by Philip Barry. The curtain went down in the last act with an accompaniment of thunderous applause.

The play concerns an abused, down-trodden youngest son, who hopes to become a famous writer some day. He is scorned and misunderstood by his family, especially by his older brother, who is totally out of sympathy with the youngest. This son, under the influence of the pretty, charming, and interfering Nancy Blake, eventually learns to assert himself, and turns on his relatives, to their great surprise. The climax is reached when it is discovered that he is the sole heir of the entire family fortune.

The Youngest is an appealing comedy of contemporary American life, and the situations are indeed human. The title role, that of Dick Winslow, a would-be author, was ably handled by Frances Shire, who kept the audience in constant gales of laughter. The part of the young lady, Nancy Blake, who caused Dick to acquire self-confidence and self-esteem, was equally well taken by Esther Wacholder. Other members of the cast included: *Charlotte Winslow*, Regina Werne; *Mark Winslow*, Elaine Garratt; *Augusta Winslow Martin*, Eunice Humphreys; *Alan Martin*, Gladys King; *Martha "Muff" Winslow*, Dorothy Ford; *Oliver Winslow*, Virginia Reid; *Katie, a maid*, Doreen Cannon.



EUNICE HUMPHREYS

REGINA WERNE

"PEGGY"

FRANCES SHIRE

Disraeli

On the evening of April 5, the College Theater scored a triumph in the presentation of Parker's *Disraeli*. The play, which is a classic, was well received by the audience, which filled the beautiful new Everett Junior High School Auditorium.

The interest of the audience was held continually throughout the four acts of the play, both because of its glamorous historical background and because of its view of political intrigue. These, mingled deftly with a charming romance, made the plot a different but wholly entertaining one. The exquisite old-fashioned costumes, with quaint bustles and dignified trains for the women, and lace and flowered satin for the men, formed beautiful pictures against the scenes designed by Mr. Frank Ray. The massive and striking furniture, loaned to the club for the occasion, gave the setting the final note of harmony for the period.

The college orchestra, under the direction of Mr. Knuth, played appropriate music during the intermissions. The play was under the able supervision and direction of Miss Casebolt, whose hard work and cheerful inspirations were responsible for the beauty and perfection of the finished product. The play undoubtedly reached a higher mark than any other previous production of the club, and has set a standard which members of the club will strive to maintain.

Mollie Levin received a great deal of applause for her sympathetic interpretation of *Disraeli*. The work of Claire Grimes and Fannie Salomon was likewise commendable and effective. Regina Werne gave a gracious performance as Mary Ann, and Elaine Garratt portrayed her difficult character well, providing both pathos and humor. The cast includes:

MOLLIE LEVIN	- - - - -	<i>The Right Honorable Benjamin Disraeli</i>
REGINA WERNE	- - - - -	<i>Lady Beaconsfield (His Wife)</i>
BERTHA BINTER	- - - - -	<i>Duke of Glastonbury</i>
LENA WATT	- - - - -	<i>Duchess of Glastonbury</i>
CLAIRE GRIMES	- - - - -	<i>Lady Pezensy (Their Daughter)</i>
ELAINE GARRATT	- - - - -	<i>Ziscount Deeford</i>
VIVIAN WALSH	- - - - -	<i>Lady Brooks (Daughter of the Duke)</i>
FRANCES SHIRE	- - - - -	<i>Lord Brooks (Her Husband)</i>
ELEANOR PEPPIN	- - - - -	<i>Lady Cudworth (Daughter of the Duke)</i>
DOROTHY FORD	- - - - -	<i>Lord Cudworth (Her Husband)</i>
ELLENA BACIGALUPI	- - - - -	<i>Sir Michael Probert</i>
CONSTANCE POWERS	- - - - -	<i>Hugh Meyers</i>
FANNIE SALOMON	- - - - -	<i>Mrs. Trazers</i>
VIRGINIA REID	- - - - -	<i>Foljambe (Her Husband)</i>
ESTHER WACHOLDER	- - - - -	<i>Bascot</i>
ELIZABETH WRIGHT	- - - - -	<i>Mr. Tearle (Disraeli's Secretary)</i>
FRANCES SHIRE	- - - - -	<i>Potter (Disraeli's Gardener)</i>
ELIZABETH BOLAND and LEE GROVE	- - - - -	<i>Members of the Foreign Legation</i>
BERTHA BINTER	- - - - -	<i>Flooks (A Rural Postman)</i>





ROSALIE McBRIDE
Editor

The Bay Leaf

The success of a college newspaper is built entirely upon co-operation. Not only must the reporters co-operate with their editors, but the editors must work with them whole-heartedly, and the student body and faculty must give their willing support as well.

During the fall semester the *Bay Leaf* saw such co-operation on the part of editors, reporters, Board of Control, Student Body, and faculty, that it came to be known as one of the best papers for a college of this size, in the state. "And the end is not yet."

Editorial Staff

ROSALIE McBRIDE	- - - - -	<i>Editor</i>
SYLVIA MARCUSE	- - - - -	<i>Associate Editor</i>
NAMIRA WARHURST	- - - - -	<i>Associate Editor</i>
AILEEN LUCEY	- - - - -	<i>Associate Editor</i>
HELEN NICHOLSON	- - - - -	<i>Associate Editor</i>
PEARL LEVIN	- - - - -	<i>Associate Editor</i>

Business Staff

ANITA TIERNAN	- - - - -	<i>Business Manager</i>
HELEN CAMPBELL	- - - - -	<i>Assistant Manager</i>
MARION ELLIOT	- - - - -	<i>Assistant Manager</i>
THELMA DE FIELD	- - - - -	<i>Assistant Manager</i>



LUCEY

WARHURST

MARCUSE

NICHOLSON

LEVIN

The Bay Leaf

As an organ of student opinion, and a record of college activities, the bi-weekly newspaper continued its constructive policies developed in the past. The "T.N.T." column, in the spring semester, became the most popular feature of the paper, for here the student body could air its multitudinous troubles and receive consolation, usually in the form of an editorial jest. Another new feature was "Views of the News," rhymed comment on current events.

Since the coming year will see an enlarging and consequent enriching of the advanced journalism course which follows the reporter's course in journalism, it is expected that the *Bay Leaf* will continue to flourish as it has in the past.



SYLVIA MARCUSE
Editor

Editorial Staff

SYLVIA MARCUSE	- - - - -	Editor
KATHLEEN DAVIS	- - - - -	Associate Editor
MARIE FOWDEN	- - - - -	Associate Editor
MARJORIE PHILLIPS	- - - - -	Associate Editor
RITA SHIELDS	- - - - -	Associate Editor
PEARL LEVIN	- - - - -	Associate Editor

Business Staff

THELMA DeFIELD	- - - - -	Business Manager
JEAN ZEIS	- - - - -	Assistant Manager
ANN SARVER	- - - - -	Assistant Manager
STEFANIE PAULO	- - - - -	Assistant Manager



SHIELDS

DAVIS

FOWDEN

PHILLIPS

LEVIN



MISS BOCK
Sponsor

The Bay Leaf Board of Control

The Board of Control of the *Bay Leaf* is composed of a group of students, who, under the direction of Miss Bock, faculty sponsor, take care of the business end of the college newspaper. It is the duty of this board to appoint the editor and associate editors of the paper. The Board of Control itself is elected by the members of the Student Body. In this way the *Bay Leaf* is really a student-controlled publication.

During the spring semester the Board of Control sponsored a dinner at which the members of the board and the editorial staff met and discussed the business of the paper.

Mr. Butler, as the faculty advisor of the *Bay Leaf*, was invaluable to the members of the staff and the Board of Control in that he furnished a wealth of material from his own experiences in the field of journalism.

MISS BOCK	- - - - -	<i>Sponsor</i>
VIVIAN WALSH	- - - - -	<i>Chairman</i>
CLAIRE GRIMES	EDNA BROWNING	MARIE JENSEN
EUNICE HUMPHREYS	JACQUELIN BEEDLE	



BROWNING

WALSH

JENSEN
GRIMES

BEEDLE

HUMPHREYS

Annual Board of Directors

Under the capable leadership of Miss Carter, faculty sponsor, the Annual Board of Directors labored diligently to make the FRANCISCAN a successful publication. The Board appointed the business staff and the editorial staff, and acted as a group of directors controlling the affairs of the year book.

This board sponsored social affairs as well as business affairs. During the spring semester a dinner was given at which the business of the Annual was discussed. On FRANCISCAN DAY the Board of Directors entertained the editorial and business staffs at a delightful tea. All the members of the Annual staff declare that much of the success of the FRANCISCAN was due to the efforts of the Board of Directors.



MISS CARTER
Sponsor

MISS CARTER	- - - - -	<i>Sponsor</i>
MAE GATES	- - - - -	<i>Chairman</i>
CATHERINE O'SULLIVAN	- - - - -	<i>Secretary</i>

SYLVIA MARCUSE	GERTRUDE GIBSON	RUBY HEMPHILL
MARION PRITCHARD	ANN SARVER	BETTY BROWN



GATES
SARVER

O'SULLIVAN
PRITCHARD

MARCUSE
GIBSON

HEMPHILL
BROWN



GERALDYNE EGLESTON
Editor-in-Chief

The 1929 Franciscan

The editorial work of the 1929 FRANCISCAN was carried on by Gerald dyne Egleston, editor, and a staff of capable assistants. The detail, routine, and clerical work was done by a group of efficient associates. Using the art motif of "Lavender and Old Lace," the staff has attempted to carry the theme, "The Evolution of the School Teacher," throughout the publication, tracing the development of the teacher from the school "marm" of 1776 to the present generation, and venturing even to predict the manners and customs of the young lady of 1950!

Editorial Staff

GERALDYNE EGLESTON	- - - - -	<i>Editor-in-Chief</i>
JEAN BURNES	- - - - -	<i>Art Editor</i>
RITA SHIELDS	- - - - -	<i>Assistant Editor</i>
ELIZABETH SMITH	- - - - -	<i>Joke Editor</i>
BARBARA KLEINHANS	- - - - -	<i>Snap Editor</i>
MRS. BLANCHE ELLSWORTH	- - - - -	<i>Faculty Sponsor</i>

Business Staff

BEATRICE SHELTON	- - - - -	<i>Business Manager, 1928</i>
VICTORINE MURPHY	- - - - -	<i>Business Manager, 1929</i>
RUTH LESCINSKI	- - - - -	<i>Advertising Manager</i>
MR. ALEXANDER BOULWARE	- - - - -	<i>Faculty Sponsor</i>



BURNES ELLSWORTH SMITH BANNER KLEINHANS SHELTON SHIELDS BOULWARE LESCINSKI

The 1929 Franciscan

Beatrice Sheldon, business manager of the fall semester, and Victorine Murphy, business manager of the spring semester worked hard for the success of the Annual. An advertising contest, sponsored by Victorine Murphy and Ruth Lescinski, advertising manager, proved to be a financial success. A college ring was given to Ruth Demartini, who obtained the most adds for the FRANCISCAN.



VICTORINE MURPHY
Business Manager

Associates

Pauline Ratto	Fannye Kaplan	Margaret McDougall	Florence Smart
Bonnie Wilder	Alice Anderson	Sarah Mason	Edward Plutte
Elizabeth Best	Jean Dawson	Helen Meyers	Barbara Burr
Amy Taubman	Elsie Breed	Gola Sanders	
Thelma Whitby	Lee Miller	Barbara Kleinhans	
Gladys Banner	Marion Donaldson		



Back row: BURR, BURNES, WHITBY, TAUBMAN, RATTO, PLUTTE, DONALDSON, SMITH, KLEINHANS, BEST
Front row: SANDERS, BREED, WILDER, MCDUGALL, KAPLAN, SMART, SHIELDS



Acknowledgments

The editorial staff of the 1929 FRANCISCAN is grateful to those who, though not directly connected with the staff, have helped to make the 1929 edition a publication worthy of the college.

We wish to express our appreciation to the students and faculty of the college who have been of inestimable assistance to us. For professional and technical work on this book we wish to thank Beck-Gerlach Printing Company, printers of our book; Sponagel and Hermann for their photographs of the campus; Weber-McCrea of Los Angeles for the covers; Coleman Company, photographers; and the Commercial Art and Engraving Company, designers and engravers.

Our deepest gratitude is extended to those three who have helped us make possible the real success of this book: Mrs. Ellsworth, Mr. Boulware, and Mr. Ellsworth. Mr. Ellsworth, as the representative of the Commercial Art and Engraving Company, has taken a personal interest in the book, and we are especially grateful to him for the pictures he has taken, and for the whole plan and make-up of the book which is the result of his experience, time, and interest. To Mr. Boulware we express our thanks for the valuable assistance he has given as financial advisor of this publication. We are deeply grateful to Mrs. Ellsworth, our faculty sponsor, whose untiring efforts, competent literary advice, executive ability and splendid enthusiasm have made possible the 1929 FRANCISCAN.



Social Activities

Student Body Formal

The Gold Room of the Fairmont Hotel provided a charming setting for the Student Body dance which was held on the evening of November 3. Soft lights playing upon the dancers produced a glory of color. Rustling taffetas, shimmering satins, and dainty lace added to the colorful setting. A University of California orchestra, composed of six pieces, furnished the music for the occasion.

The efforts of Eleanor Rathke, chairman of the dance committee, made the Student Body Formal a splendid success. Miss Rathke's assistants were Florence Wrenn and Mae Gates. The class presidents acted as hostesses. The patrons and patronesses of the affair were: President and Mrs. Roberts, Dr. and Mrs. Arnesen, Mr. and Mrs. Knuth, Mr. and Mrs. Ellsworth, Mr. and Mrs. Marples, Miss Levy, Mrs. Spozio, and Dr. Barney.

Senior Dance

One of the most colorful events of the fall semester was the Senior Farewell Ball which the Class of May, 1929, gave in honor of the December, 1928, graduates. The Red and Gold Ballroom of the Fairmont Hotel provided a suitable background for the attractively dressed dancers. Pastel tints in dresses and slippers added to the whole effect of the setting.

Mae Gates, president of the low Senior Class, deserves much credit for the success of the evening. She had entire charge of the affair. Those who assisted Miss Gates were: Aileen Lucey, Pauline Ratto, Geraldine Egleston, Josephine Mulvihill, Lois Harding, Christine Minetta, Elizabeth Smith, Thelma Whitby, Margaret Snell, Marion Pritchard, Velma Schulze, Marie Schnittger, Wilma Staiger, Dorothy Green, Emrose Findlay, and Florence Wrenn. The patrons of the occasion were: Miss Crumpton, Miss Levy, Miss Moe, Miss McFadden, Mr. and Mrs. Marples, and Dr. and Mrs. Roberts.

Glee Club Dance

Variously colored serpentine, lovely costumes, lively music and happy dancers turned the Concert Room of the Palace Hotel into a festive land for the Glee Club dance on December 8. Once again the Glee Club's semi-annual dance became a happy success.

Eleanor Kennedy, chairman of the dance, who with her committee had worked so conscientiously to make the affair a success, was well rewarded for her efforts. Her assistants were: Beatrice Sheldon, Evelyn Ury, Marie Cantlen, Madge Baker, Wilma Staiger, Kathryn Shurtz, Evelyn Ganzenhuber, Anna Johansen, Marie Schnittger, and Velma Schulze. The officers of the club were the hostesses of the evening.

Student Body Dance

Dancing to the strains of Cowell Dein's orchestra, two hundred couples made merry at the Student Body dance which was given in the Gold Ballroom of the Palace Hotel on the night of April 13.

The members of the Student Body were delighted with the efforts of Eleanor Kennedy, chairman, who worked so hard for the success of the dance. She was assisted by the following committee: Mae Gates, Gertrude Gibson, Betty Kennedy, "Marge" Corcoran, "May" McDermott, Thelma Malloy, Eunice Humphreys, Edith Schulze, "Kay" Shurtz and Emrose Findlay.

Special features which were offered were the balloon dance and the serpentine dance. They were both very well received. The spring semester Student Body dance was one of the most enjoyable of the many social affairs of the college season.

Senior Dance

One of the last social affairs of the spring semester, and probably the most successful, was the farewell dance which the low Senior Class gave in honor of the high Seniors on the night of April 27. The dance was given in the White and Gold Ballroom of the Western Women's Club.

Besides the regular dances, several novelty dance numbers were offered. These dances added much to the enjoyment of the evening. Janis Miller, president of the low Senior Class, worked untiringly to make this last affair of the season a success. The splendid success with which the dance met far eclipsed her most ardent dreams. The members of the committee who proved of invaluable assistance to Miss Miller were: Gola Sanders, Eleanor Kennedy, "May" McDermott, Eleanor Rathke, Florence Smart, Pearl Levin, Margaret McDougall, Josephine Fowler, and Gertrude Gibson.

Glee Club Dinner Dance

The Glee Club held its spring term dance in the Western Women's Club on February 2. Candles, flowers, and paper decorations turned the room into a concert of color. Allan Wyatt's orchestra furnished the music for the occasion. During the evening several novelty dances were offered. During the second extra, old-fashioned paper hats were given to the dancers.

The following committee was in charge of the arrangements: Marie Schnittger, chairman; Betty Kennedy, Lois Harding, Emrose Findlay, Ruth Brazel, "Ronnie" Olson, Helene Crase, Alice McKnew, Frances Shack, Margaret McDougall, and Edward Plutte.

Student Body Tea

The Student Body held an informal tea in the Gold Room of the Fairmont Hotel on October 11. A number of tables, each one set for eight, were arranged about the room. At one end, running the entire length of the room, was the faculty table. "Pat" Schulze, hostess of the tea, extended a welcome to all. During the course of the afternoon an interesting program was presented. Helen Wong, attired in her native Chinese costume, gave several dance numbers. A number of songs by Dorothy Trefethen were included in the program. An address by Dr. Roberts was the fitting climax to the happy afternoon.

Freshman Reception

A reception in honor of the Freshman Class was given by the Student Body on September 6. A gay spirit pervaded the whole afternoon. One of the main attractions was Buck Aulton's University of California Orchestra. A very enjoyable program was presented. A Floradora Sextette revived the "Days of '90." Sixteen girls took part in this number; eight of them portrayed the lovely maidens of the '90's, and eight were their handsome beaux. The Freshmen were delighted by the manner in which they were welcomed into the life and activities of the college. Virginia Dunn, Dorothy Dunn, and Christina Minetta were in charge of the affair.

Candle Light Dinner

On December 20, the new gymnasium was the scene of a Candle-Light Dinner which took the place of the old night rally. Before the dinner an impressive candle-lighting ceremony took place. A true Christmas spirit prevailed throughout the dinner. Near the conclusion of the dinner the guests were surprised at the appearance of Santa Claus himself. Every club of the college was asked to contribute to the merriment of the evening. As a result a delightful program was enjoyed. Dr. Roberts made a short address in which he expressed a desire for many such gatherings. On this occasion the seniors were the guests of honor.

A Cappella Choir

The A Cappella Choir of the College of the Pacific, under the direction of Charles M. Dennis, entertained the Student Body of the San Francisco State Teachers College in the Assembly Hall on December 11. The program consisting chiefly of Christmas carols, was divided into five groups, three of which groups were unaccompanied or a cappella.

Candle-Light Dinner

Honoring William John Cooper, former State Director of Education, and recently appointed Commissioner of Education for the United States, the faculty and students of the college gave a Candle-Light Dinner in the new gymnasium on the night of January 28. Faculty, students, alumni, and guests of the college participated in the affair. The candle-lighting ceremony conducted by the officers of the Student Body preceded the dinner. Dr. Roberts, Mr. Cooper, Dean Du Four, and Mr. Charles Albert Adams of the State Board of Education were the speakers for the occasion. A delightful program was presented. Miss Levy was in charge of the banquet.

Student Body Tea

On March 7, the Gold Ballroom of the Fairmont Hotel was again the scene of a San Francisco State Teachers College Student Body tea. "Pat" Schulze was hostess of the afternoon. Almost the entire program was given by outside talent. Gertrude Atherton, well-known California writer, was the guest of honor. The guests at the tea were delighted with Miss Atherton's address. Miss Lucy Vance entertained with several songs. Marie Curran, chairman of the committee in charge, was complimented on the success of the tea. Her assistants were: Mae Gates, Pauline Ratto, Nora Murphy, Victorine Murphy, Alberta Stegeman, Alice Ritter, Margaret McDougall, Frieda Jaeger, Gladys King, Eleanor O'Neil, Emrose Findlay, Viola Enos, and Elsie Carlson.

Freshman Reception

The Class of December 1932 was welcomed to college life at a reception which the Student Body gave in the new gymnasium on January 31. "Pat" Schulze, president of the Student Body, welcomed the Freshmen. Dr. Roberts was then formally presented to the class. The Freshmen were pleased with the program which the Student Body presented. "Pat" Schulze, Doreen Cannon, Elizabeth Boniface and Virginia Carniglia took part in a skating dance. Between numbers the orchestra played lively music for dancing. The last part of the program was a specialty number for the low Freshmen only. At the close of the reception refreshments were served.

Easter Egg Hunt

In the latter part of March the Glee Club again turned its thoughts to dyeing. Every year, since its inception in 1893, the members of the club take to dyeing as a preliminary for the annual Easter egg hunt which is given for faculty and students. After six hundred colored eggs had been hidden on the campus around Anderson Hall, the eager guests of the club started on the hunt. A live bunny was given to Edith Cusick, finder of the most eggs.

1902

Revelations! Our lady of 1902, the last of the old-fashioned girls! The rumble of the approaching ado about woman's rights was to be heard even then, and many were the hearts that quaked and trembled at the mere thought of self-assertiveness.

Can you remember Milady as she rode down Market Street, proudly enduring the puff and sputter of her husband's *merry Oldsmobile*? There she sat, erect, proud, withall a little frightened, as her "gas-wagon" bore her along, often as fast as fifteen miles an hour! Her hat closely pulled in with a long scarf and veil; her skirts from time to time revealing an apparently unending row of buttons on her high-top shoes; her natty tailor suit, with its waistline unbelievably small; can you remember?



Suffrage, abolition of the double standard and grand opera were her chief topics of conversation. While her parents sat around and glared, she forsook the stately minuet and waltz for the more lively two-step and polka.



Organizations

Nyoda Club

With "Service" shining as their goal, the members of the Nyoda Club with the kind and helpful advice of their faculty sponsor, Dean Ward, have made the burdens of many easier to bear, and have aided their fellow students many ways.

One of the most outstanding types of service rendered has been that in connection with the hospital work. With Ann McHugh as chairman, a group of students have visited the children at the San Francisco and University of California Hospitals. Besides telling these young patients stories or entertaining them in other ways, the students have coached the children in their studies so as to help them keep up with the progress of their classes.

Another project that the members of the Nyoda Club have been working on is the compiling of a booklet which will be an official guide to San Francisco and the bay region. The booklet will include all points of interest as well as suggestions of places for week-end trips and picnics. This guide is planned for the enlightenment of entering students at the San Francisco State Teachers College.



ANNA McHUGH
President

Fall Semester	Officers	Spring Semester
CATHERINE O'SULLIVAN	President	ANN McHUGH
GRACE HAUPTLI	Vice-President	SYLVIA MARCUSE
ANN McHUGH	Secretary-Treasurer	MARY CONNOLLY



Back row: HEFLIN, WICKBOM, HAMAKAR, MCGLYNN, ERIKSEN, RUSSELL, HEMPHILL, McDONALDSON, MORTIGIA
Middle row: HAUPTLI, MURRAY, MILES, O'SULLIVAN, DEAN WARD, McHUGH, WILLIAMS, WATSON, BROCKLEHURST, MENG
Front row: CAMERON, ANDERSON, MARCUSE, STONE, MITTBY, CONNOLLY, SMITH, BEER, WILDER



MARIE FOWDEN
President

Scribes Club

Virile deeds of derring do, whisperings of romance, soul-rending passion, fairies tripping in the moonlight: these are the things that Scribes delight in. During the weekly club-hour they read their short stories, poems and essays, criticize and encourage one another, and learn the secrets of successful writing from their sponsor, Miss Lillian Talbert, who herself has had many stories published.

The Scribes do not confine their pleasures to the pursuit of fame, however. During the fall they entertained the San Francisco poet, Nancy Buckley, at a tea. Dr. Henry Meade Bland, appointed Poet Laureate of California by the State Legislature, was among the notables invited to inspire the Scribes during the second term.

Fall Semester	Officers	Spring Semester
ELIZABETH PINNEY	- - <i>President</i> - - - -	MARIE FOWDEN
JULIA DIERSEN	- - - <i>Vice-President</i> - - - -	EDITH DUNCAN
RITA SHIELDS	- - - <i>Secretary</i> - - - -	MARIE HASSON
MARIE FOWDEN	- - - <i>Treasurer</i> - - - -	MADeline WILBUR



Back row: DIERSEN, GRIFFITHS, TALBERT, JORGENSEN, SHIELDS
Front row: WILBUR, HASSON, PINNEY, FOWDEN, DAVIS

Bookaneer's Club

Yo! Ho! All aboard the pirate ship to sail the sea of literature! Sailing under the name of "Bookaneer," this pirate band has touched many strange ports, and there the pirates bold have stopped to delve into the treasures of Conrad, Stevenson, O'Neill, and others.

The Bookaneer's Club was originated in the San Francisco State Teachers College by a group of book lovers whose goal was to promote interest in worthwhile reading, to create appreciation of literary values in our environment, and to inspire good fellowship. Under the able guidance of their faculty sponsor, Miss Kleinecke, and with the aid of their honorary members, Miss Henze, Mrs. Monroe, Dr. Michell, and Dr. Arnesen, the Bookaneers have brought their goal in sight.

Besides the monthly meetings, other activities have been participated in by the Bookaneers. Dinners, theater parties, and breakfasts have not been the only forms of amusement. To close the fall semester of 1928, the Bookaneers held a dinner in the Glee Club rooms at which many members of the faculty were present.



PEARL LEVIN
President

Fall Semester	Officers	Spring Semester
JACQUELYN BEEDLE	- - President - - - -	- PEARL LEVIN
DOROTHY EICHENWALD	- Secretary - - - -	CHARLOTTE BERMAN
MURIEL PHILLIPS	- - Treasurer - - - -	JACQUELYN BEEDLE



Back row: REMLER, BROWNING, VEDA, CARLSON, MOLLER, FIGONE, MAHARRY, GRIMES, WALSH
Front row: EICHENWALD, LEGGAT, LEVIN, BEEDLE, BERMON, BLAESS, FOSTER, DUBINSKY



MRS. McCAULEY
Director

A Cappella Choir

The very youngest, but by no means the least progressive organization in our college, is the A Cappella Choir. The success that has come to the choir since its organization such a short time ago proves that the members of the A Cappella Choir are capable, hard-working, and enthusiastic.

The San Francisco State Teachers College owes its inspiration for the choir to the A Cappella Choir of San Jose State Teachers College. When the San Jose choir entertained our college at assembly, a group of our students became interested. Soon after, under the direction of Mrs. McCauley, an A Cappella Choir was organized in our college. The members of this group have one purpose: to produce an ensemble of the highest type. This unaccompanied group must give forth finished work; it must have perfect harmony throughout.

According to the members of the group, much of the success which has come to the choir is due to the untiring efforts of Mrs. McCauley, capable director, and Miss Marian Watson, a charter member. Other charter members of the organization are: Gundrun Erickson, Elizabeth Pinney, Helen Allan, Ethel Torwick, Alice McKnew, Emma Nash, Fannie Salomon, Georgina Boyd, and Dolores Vierra.



Back row: NASH, PINNEY, WATSON, MILLER, SALOMON
Front row: ERICKSON, McCAULEY, ALLAN, COMPTON, TORWICK

The Art Club

Every member of the Art Club feels that the past year has been a very happy and successful one. Probably the biggest reason for this attitude of the Art Club members was the return of their sponsor, Miss Mayer, who had been abroad, and who brought back to these art students many helpful suggestions and new ideas for their art work.

The Art Club was instituted with the aim to foster and to further the interest in art. Valuable opportunities were offered by means of visits to museums, exhibits, and art galleries. The knowledge and ideas that were gathered by the students from these excursions have helped them in their art work, and many novel pieces of craft work have been completed by the members.



MARY SCHNITZIUS
President

Fall Semester	Officers	Spring Semester
MARIE CURRAN - - -	<i>President</i> - - -	MARY SCHNITZIUS
MARY SCHNITZIUS - -	<i>Vice-President</i> - -	MARION HARE
RUTH OVERFIELD - -	<i>Secretary</i> - - -	AUDREY CARTER
MARIE SCHMITT - - -	<i>Treasurer</i> - - -	RUTH OVERFIELD



Back row: HARE, SCHMITT, CARTER, MAYER, ANGELINI, SCOTT, OVERFIELD, GUTERMUTE, MARSHALL
Front row: JOHNSON, CURRAN, SHEA, SCHNITZIUS, FAIRBANKS, MUNK



BEATRICE CANNEY
President

Home Economics Club

A group of students interested in the household arts, form the Home Economics Club. Sewing, cooking, planning the meal, arranging the table, all have a part in the work of this active club. The organization does not exist solely for the home economics major. Many students who do not major in this field, but who are interested in sewing and cooking, belong to this club. Under the direction of their sponsor, Miss Spelman, the members of the club arranged and served a luncheon for the faculty during the spring semester. The girls learn in this way to cook and serve a meal. A large part of the semester was given to sewing. Attractive coats and dresses which the members made show plainly the benefits received in the Home Economics Club.

Officers

BEATRICE CANNEY	-	-	-	-	-	-	-	-	-	-	-	-	-	-	-	-	-	<i>President</i>
ALICE RICH	-	-	-	-	-	-	-	-	-	-	-	-	-	-	-	-	-	<i>Vice-President</i>
EDITH CUSICK	-	-	-	-	-	-	-	-	-	-	-	-	-	-	-	-	-	<i>Secretary</i>
GOLA SANDERS	-	-	-	-	-	-	-	-	-	-	-	-	-	-	-	-	-	<i>Treasurer</i>



Left to right: BRENNAN, THOMSON, TAHENY, TWOMEY, CUSICK, SPELMAN,
SANDERS, RICH, CRABTREE, DE LU

Kindergarten-Primary Club

The Kindergarten-Primary Club, an organization sponsoring social and professional activities for students in the Kindergarten-Primary department, has just completed a happy and successful year. With Jane Gallivan as president, Margaret Fabing as vice-president, and Elsie Breed as secretary-treasurer, the members of the club combined work and play successfully.

The club was addressed by Dr. Albertine Nash, the psychologist, and upon another occasion listened to Mr. Hackett, professor of Kobi College for Women in Japan. Several teas in Kindergarten Building were also a part of the thoroughly successful program of the year. Much of the success of the year was due to Miss Barbour, the able sponsor of the club.



JANE GALLIVAN
President

Fall Semester	Officers	Spring Semester
JANE GALLIVAN - - -	<i>President</i> - - -	JANE GALLIVAN
MARGARET FABING - -	<i>Vice-President</i> - - -	MARGARET FABING
ELSIE BREED - - -	<i>Secretary-Treasurer</i> - - -	ELSIE BREED



Back row: TIETZE, BRISBOIS, HUMPHREY, FABING, OLSEN, BRAZEL, WEBB, PURDIE
Front row: RIEMAN, ISAACSON, ALLCUTT, CARLOCK, GALLIVAN, BARBOUR, MCGUFFIN, MELANPHY



DOROTHY MCGUFFIN
President

Delta Phi Upsilon

Though organized only a year ago, the Epsilon chapter of the Delta Phi Upsilon holds a very important place in the list of college organizations. Delta Phi Upsilon is a national honorary professional fraternity sponsoring the interest of Kindergarten-Primary work.

During the past year three new members were elected to Epsilon chapter, giving this chapter eight active and seven alumnae members. The active members include: Elizabeth Burns, Gay Hill, Emiline Purdie, Virginia McKinnon, Gladys Cathcart, Lucille Schoenfeld, Valverda Milliken and Mrs. Clare Schell. Alumnae members include: Miss Barbour, Miss Allcutt, and Miss Christianson.

Officers

DOROTHY MCGUFFIN	- - - - -	<i>President</i>
GAY HILL	- - - - -	<i>Vice-President</i>
VIRGINIA MCKINNON	- - - - -	<i>Recording Secretary</i>
GLADYS CATHCART	- - - - -	<i>Corresponding Secretary</i>
DOROTHY TREFETHEN	- - - - -	<i>Historian</i>
EMELINE PURDIE	- - - - -	<i>Marshall</i>



Left to right: ISAACSON, HATA, HILL, MCGUFFIN, ALLCUTT, BARBOUR, PURDIE, RIEMEN

Siena Club

The Siena Club is a very active organization connected with the San Francisco State Teachers College. It is a Catholic students' club, which aims to provide a home for students of the college who do not live in the city, and to advance the spiritual and intellectual welfare of its members.

The Siena members participate in many social affairs. On October 27, 1928, a Formal Dance was given at the Hillcrest Club. At Christmas time the Siena Club entertained fifty orphans from Mount Saint Joseph's Home. The outstanding events of the spring semester were the Informal Sport Dance and Open House. A great deal of the success and the happiness of the Siena Club is due to its sponsor, Miss Nellie Sullivan.



EVELYN LAGOMARSINO
President

Officers

EVELYN LAGOMARSINO	- - - - -	<i>President</i>
MARION TRAINOR	- - - - -	<i>Vice-President</i>
RUTH MULLER	- - - - -	<i>Secretary</i>
DOROTHY GREEN	- - - - -	<i>Treasurer</i>

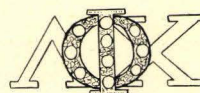


The Siena Club

The Phi Lambda Chi



WILMA STAIGER
President



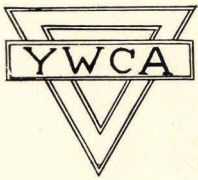
The Phi Lambda Chi is one of the most thriving societies in San Francisco State Teachers College. Only a few years ago this club, purely a social organization, was formed by a group of students of the college with the aims: to bring the students together in a friendly spirit and to render service whenever possible. From very humble beginnings the Phi Lambda Chi has grown until now it has its own house at 1927 Washington Street, where it is the home of many students who do not live in San Francisco, where the meetings are held, and where many social activities take place. The members of the Phi Lambda Chi will never forget that much of the success of the club is due to their faculty sponsors, Miss McFadden and Miss Crumpton.

Besides the two monthly meetings, one of which is held in the afternoon and the other in the evening, many social activities are sponsored by the Phi Lambda Chi. During the fall a tea was held in honor of the new members and the faculty of the college. On September 22, 1928, a bridge tea was given. The big social event of the term was the Hallowe'en Dance held at the house, October 26, 1928. The affair was a great success.

Fall Semester				Officers				Spring Semester			
WILMA STAIGER	-	-	-	<i>President</i>	-	-	-	WILMA STAIGER			
VETRA RUSSELL	-	-	-	<i>Vice-President</i>	-	-	-	MYRTLE SAXE			
GOLA SANDERS	-	-	-	<i>Secretary</i>	-	-	-	ALICE RICH			
INEZ HAINES	-	-	-	<i>Treasurer</i>	-	-	-	INEZ HAINES			



The Phi Lambda Chi



Young Women's Christian Association

Under the guidance of Helen Price of the National Board of the Young Women's Christian Association and Miss Grace Stockwell from the Berkeley Association, a chapter of the Y. W. C. A. was organized on the campus in the early part of the fall semester. The purpose of this organization is to give students an opportunity to study problems which interest them, to give them recreation and friendship, and to be of service to the whole college. During the fall semester the group opened a club room which was put at the disposal of the entire student body. The cheerful sign, "Everyone Welcome" is now well known by all the students on the campus. With the help of their able faculty sponsor, Miss Allcutt, the club enjoyed a very successful year.



GOLA SANDERS
President

Fall Semester	Officers	Spring Semester
GOLA SANDERS - - -	<i>President</i> - - -	MADelyn MUNK
INEZ HAINES - - -	<i>Vice-President</i> - - -	VETRA RUSSELL
VETRA RUSSELL - - -	<i>Secretary</i> - - -	RUTH BROCKLEHURST
BONNIE WILDER - - -	<i>Treasurer</i> - - -	IRENE RICH



Back row: SANDERS, WILBUR, BURR, ALLCUTT, EGGLESTON, RICH, ALEXANDER
Front row: WILDER, STAIGER, WHITBY, LUNDGREEN, MUNK, BROCKLEHURST, DEBB, SIBLEY, SCHMIDT

1929

Revelations! Our present day girl represents the ultimate in development of three hundred years or more of American girlhood. She has finally thrown off the restraining influences of the past, emerging to a new type of life, quite unhindered by the many dictates of society that made the lives of her ancestors so barren of actualities.

She dresses with a thought to comfort, and not always with propriety; she speaks her mind, seeking no refuge in hypocrisy; she asks of life something better than to be a useless and adored ornament. Milady is not a pensive miss; still she is not thoughtless; some term her frivolous, although she has capacities for responsibility and for seriousness.

Motor cars whiz her over countless miles of country at a dizzy pace, as she seeks all that is new and sought for among the diversions. She dances, she swims, she golfs, and she flies, scorning nothing but inactivity. Eventually she settles down and brings up her family in much the same manner as her mother did, but sacrificing herself no more than she need, consistently refusing to let life submerge her with its cares.





Athletics

Athletic Conference of American College Women

During the fall term of 1928 the Women's Athletic Association joined the Athletic Conference of American College Women. As a result, our W. A. A. is now part of the national college movement to maintain the highest standards in women's athletics. The Athletic Conference of American College Women provides national contact with colleges and universities with a background of a knowledge of the activities of other colleges.

Once every three years a meeting of the national organization of A. C. A. C. W. is held. Conferences of the western, central, and eastern sections are held in the intervening years. The last conference of the western section was held in April, 1928, at the University of Arizona. Delegates from the various colleges attended the conference, at which time their platform was accepted.

National Amateur Athletic Federation

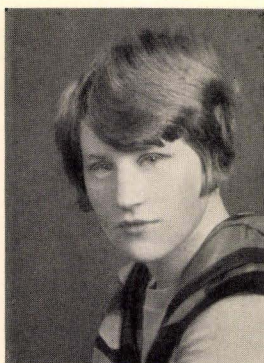
In the fall of 1928 the Women's Athletic Association of San Francisco State Teachers College realized its greatest ambition. The cherished dream of being a member of the National Amateur Athletic Federation of America came true. The Women's Division of the National Amateur Athletic Federation is a national federation of organizations that has as its purpose the safeguarding of girls' sports.

At its first annual meeting in Chicago, in 1924, the N. A. A. F. adopted the following platform:

"The Women's Division of the National Amateur Athletic Federation of America believes in the spirit of play for its own sake, and works for the largest possible proportion of persons in any given group, in forms suitable to individual needs and capacities, under leadership, and environmental conditions that foster health, physical efficiency, and the development of good citizenship."

At the annual meeting in May, 1926, the following additions to the platform were adopted:

"To promote an intelligent choice of physical activities for girls and women which will be in conformity with their structural and functional characteristics and their social trait, rather than an imitation of men's activities."



ANNA JOHANSEN
President

Women's Athletic Association



The W. A. A. has an exceptionally well organized club. Besides the regular officers, president, vice-president, and secretary and treasurer, a number of managers have charge of the various sports. To these officers and managers much of the success of the organization is due.

Fall Semester	Officers	Spring Semester
ANNA JOHANSEN - - -	President - - -	ANNA JOHANSEN
ANNE ROMANI - - -	Vice-President - - -	ELIZABETH BOLAND
ADRIA MOYNAHAN - - -	Secretary - - -	LOIS HARDING
LOIS HARDING - - -	Assistant Secretary - - -	TRUE GIFFORD
MARY SMYTH - - -	Treasurer - - -	MARY SMYTH
ALBERTA STEGEMAN - - -	Health Manager - - -	KATHLEEN O'FARRELL
CLAIRE ROLAND - - -	Swimming Manager - - -	MARION DONALDSON
ALICE MCKNEW - - -	Tennis Manager - - -	LEAH BOEHM
EDITHMARIAN FEEHAN - - -	Golf Manager - - -	EDITH BANDETTINE
MARY MCGLOIN - - -	Ice-Skating Manager - - -	MAE GATES
MARION DONALDSON - - -	Speedball Manager - - -	THELMA WHITBY
	Volley Ball Manager - - -	ELIZABETH SMITH



ROMANI

MOYNAHAN

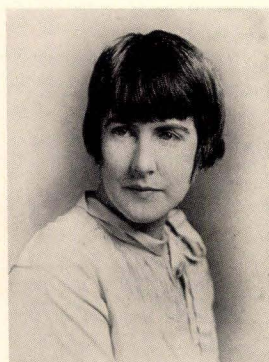
HARDING

SMYTH

Women's Athletic Association

The Women's Athletic Association of the San Francisco State Teachers College boasts the largest membership of the college organizations. It is organized on the basis of healthful activity, the purpose of which is to stimulate and interest in athletics, foster a spirit of social equality and school loyalty, and to promote the highest ideals of sportsmanship.

The association during the fall term of 1929, through action of the Executive Board, which is composed of the officers and heads of sports, endeavored to realize these high standards by joining two of the most highly esteemed national women's athletic associations, the Women's Division of the National Amateur Athletic Federation and the Athletic Conference of American College Women. Through joining these national groups, of which American colleges comprise the membership, the W. A. A. of the San Francisco State Teachers College has established itself on a permanent basis. It is the hope and anticipation of the Executive Board of the spring of 1929 to be able to publish a printed handbook of the W. A. A., embodying the purpose, ideals, activities, and constitution, which will be determined mainly by the platforms of these two bodies.



ELIZABETH BOLAND
Vice-President



BOLAND

GIFFORD

HARDING

SMYTH

Coaches



Three of the Four

An organization must have sponsors, sponsors who stand for the purposes and ideals of the organization. The Women's Athletic Association of the San Francisco State Teachers College boasts of its advisors: Miss Florence Hale, Miss Doris Holtz, Mrs. Sarah Scott, and Miss Katherine Hall, the faculty members of the Department of Physical Education. The association owes to these sponsors, who have devoted time and utmost energy towards highest goals, all the credit for the success that has come to the organization during the past year.

To Miss Florence Hale the association owes first its original organization; secondly, its continuance in stability, permanence, and development towards an organization reaching the entire student body. The name of Miss Hale and her guiding spirit stands eulogized in the annals of the Women's Athletic Association of the San Francisco State Teachers College. Mrs. Scott has given to the club valuable assistance in health and posture work as well as in dancing. Miss Holtz has been faithful in coaching and refereeing basketball and volleyball. The W. A. A. appreciates every effort of its faculty sponsors who have contributed their willing co-operation and support throughout all the organization's endeavors.



HALE

HOLTZ

SCOTT

HALL

Unlimited Basketball

The turn-out for the fall of 1928 basketball reached the hundred mark, showing beyond a doubt that basketball is one of the most popular sports among the girls. Many freshmen signed up and showed good sportsmanship and good teamwork throughout the tournament. All the other classes had good teams and showed genuine interest. May 1929 had the largest and strongest turn-out, numbering twenty-four in all. Nine of this class made the unlimited team, and nine supported the lightweight team.

A double round-robin tournament of twelve games was played. May 1929 won the tournament without the loss of a game. These champions deserved the gold basketballs which they won, as they played good clean basketball consistently throughout the season. The players on the May 1929 squad were: Josephine Mulvihill, captain and side center; Alberta Stegeman and Alice Ritter, tap centers; Mary Smyth, Elizabeth Smith, Nora Murphy and Dorothy Eggers, guards; Mary McGloin and Thelma Whitby, forwards. The basketball season ended with an exciting game at the W. A. A. Night rally when the victorious May 1929 team won a close game from a picked team, composed of skilled players from all classes. Dean DuFour awarded the gold basketballs to the winning team.

Much of the credit for the success of the basketball season should go to Marion Donaldson, under whose able management the sport was guided, and to Lillian Bianchini, who acted as her efficient assistant.



MARION DONALDSON
Manager



Left to right: EGGERS, MCGLOIN, MULVIHILL, SMITH, WHITBY, SMYTH, MURPHY, STEGEMAN, RITTER



MARION DONALDSON
Manager

Limited Basketball

Three classes were represented by light-weight basketball teams which went through the season with some interesting games. June 1929's squad was the favorite of the season, but the June 1930 team soon annexed a good supporting cast of rooters and came through the season tied for first place with June 1929. The final game was played off at the W. A. A. Night Rally and was one of the best games of the season. The score was close throughout the game; but it was the fine team work of the June 1930 squad that finally decided the contest. Alice Garvey starred as side center. Honors were well divided between Leah Boehm and Captain True Gifford as forwards, who received the best

support from their guards, Palmeda Foster, Florence Pometta, Teru Moore, and Mildred Smith, tap center.

The June 1929 team did not seem to play the good type of basketball at the Night Rally which they had played throughout the season; this fact was due probably to the excitement of the evening. Honors were well divided among the team, which consisted of: Virginia Dunne, captain; Christine Minetta, Lois Harding, Beatrice Paterson, Anna Johansen, Margaret Sibley, Elizabeth Boland, and Lillian Bianchini. The final score of the game was fifteen to eight in favor of June 1930. After the games the winning team was presented with gold basketballs by Dean Du Four.



Front row: O'FARRELL, POMETTA, GIFFORD, GORMAN
Back row: SMITH, BOEHM, FOSTER, MOORE.

Volley Ball

Volley ball basked in glory during the first half of the spring semester, for the number of sign-ups was greater than it had ever been before, totalling seventy-five. The idea that volley ball is an uninteresting, slow game was almost completely uprooted during the spring term, and enthusiastic practices resulted.

The first five weeks of the season were devoted mainly to practicing and to team work-outs. Many of the girls had never played volley ball, and the others could well use the weeks of practice. The results were well worth the efforts, for a high degree of skill in passing, killing, and other interesting points of the game were attained. The tournament was a double round-robin and was run off in three weeks. This arrangement enabled one team to meet all others twice. May 1932, the high Freshmen, won the tournament, and certainly deserved the honor, for the team was a strong one, both offensively and defensively. The champions were: Tessie Vierra, captain; Edith Gene Gaines, Betty Stevenson, Marian McCarthy, Helen Vida and Margot Aase. These girls played commendable volley ball, and met their stiffest games with assurance and mechanical perfection.

The interest in volley ball reached a high point by the end of the season, and as a fast sport was greatly raised in the estimation of all those who participated, as well as all of those who watched. Much of the success of the season was due to the competent management of Elizabeth Smith, manager.



ELIZABETH SMITH
Manager

Betty?



Back row: GAINES, POMETTA, JOHNSON, FOSTER, SMITH, KOLEN, EGGERS, SMYTH,
MOORE, WHITBY, STEVENSON

Middle row: ROMANI, GIOVANNONI, BURKS, MORTIGIA, DONELON, STEGEMAN, O'NEIL,
RITTER, O'FARRELL, DORTIGNAC

Front row: JOHANSEN, VIERRA, GARVEY, MCGLOIN, MULVIHILL, ROLAND, MALLOY, BOEHM, SMITH



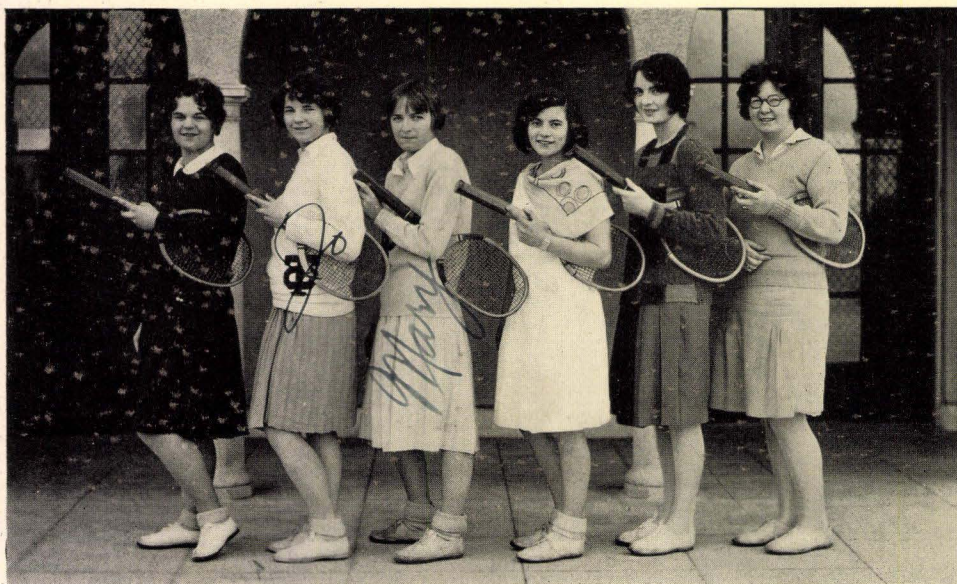
LEAH BOEHM
Manager

Tennis

During the fall semester of 1928, tennis was conducted in three groups; a novice ladder tournament, an inter-class tournament, and a mixed doubles tournament. Due to a large number of entrants in the novice division, it was necessary to plan a method of elimination. A ladder tournament was conducted within each class in order to determine the superior players. Josephine Mulvihill of the class of May 1929 won the novice singles, and Mary McGloin of the same class won the second singles. The first doubles or crown of the novice tournament was taken by Betty Stevenson and Edith Gaines. "Connie" Powers and Mary Smyth, May 1929, won the second doubles. May 1929 again came to the top to win the championship tournament. "Dot" Eggers and Lillian Bianchini won the championship doubles.

The captains of the various teams were: Uarda Schuldt, Degree Students; "Connie" Powers, May 1929; Rose Cohen, December 1929; Mary Mortigia, May 1930; and Marian McCarthy, May 1932.

For the first time in the history of the college a mixed doubles tournament was played. Four teams were entered. There were no requirements for eligibility, nor were there any awards given. Margaret Higginson and Allan Wyatt won the final game and the championship. The other teams included: Margaret Weston and Edward Plutte, Lois Harding and Harry Rogie, Alice McKnew and Hector McLeod. The tournament was more or less in the form of exhibition doubles playing. Alice McKnew, tennis manager for the fall of 1928, succeeded in her drive for a big tennis sign-up.



Left to right: EGGERS, MULVIHILL, MCGLOIN, MINETTA, SMYTH, POWERS

Ice-Skating

Ice-skating, the Women's Athletic Association's latest innovation, was organized in the fall of 1928, and has become "quite the thing" with the Student Body as a whole and the Association in particular. Ice-skating as a W. A. A. activity came into being as a result of the main social function of the Association during the fall term, when an ice-skating party was held at the San Francisco Ice-Skating Rink.

Sixty-four students and faculty weathered the rain and cold elements of the atmosphere on the night of October 29, 1928, to enjoy the W. A. A.'s latest venture. The skaters enjoyed the evening with no bruises, but many bumps. Mrs. Cowell, of the faculty, and her husband favored the party with exhibition skating; a baseball game on the ice provided a few thrills, and a tug of war all the fun. Socially and financially the affair was a success. Lucille Savage, of the class of December 1928, was manager of the affair. The success of the party was of such a calibre that enthusiasm on the part of the faculty as well as the students warranted the establishing of ice-skating as a regular activity of the Women's Athletic Association, of which Mary McGloin was elected manager for the balance of the fall semester.



MAE GATES
Manager



Back row: MORTIGIA, MCGLOIN, ROLAND, GROVE, SMYTH, GIBSON, GARVEY, DOWLING, MARTIN
Front row: GIOVANNONI, VIERA, MULVIHILL, FEEHAN, SARVER, GUBBINS, O'FARRELL, GIFFORD, GLYNN



EDITH BANDETTINE
Manager

Golf

Lincoln Park golf course again lured "would-be-golfers" from the W. A. A. of the San Francisco State Teachers College to its fairways and greens. The twelve "pros-in-the-making" participated in group instruction from Til Cuneo, professional of the club. About six lessons resulted in fancy drives, high-arched "mashies," and attempted putts. Then the girls ventured forth alone on the course.

Additional lessons were given after a few weeks' links practice; then the gun announced the tournament for individual championship. One foursome started out in the tournament, Edithmarian Feehan, golf manager, and Miss Hale acting as official scorers. The foursome played under medal-play rules. Anita Tiernan, champion of the spring of 1928, Alice Doran, a "past-master" of golf, Edith Bandettine, and Anna Johansen, golf recruits, formed the foursome. Play was even nearly all the way. Anita claimed the cup with a score of fifty-five for nine holes; Anna Johansen, followed with a score of fifty-eight. Everything from pars to man-sized drives were recorded.

Golf evolved from a mere handful membership to one of repute in comparison with the size of the golfing group of Teachers College. Edithmarian Feehan, manager for the spring term, Edith Bandettine, manager for the fall term, and Miss Hale were largely responsible for the success of this sport. Its original organization was in the fall of 1927 under the managership of Anita Tiernan.



DEMPSEY

FINDLAY

JOHANSEN

FEEHAN

Swimming

A well-filled swimming schedule was carried out in the spring semester. A meet with the San Francisco Y. W. C. A. and an inter-class meet were on the program. On Wednesday night, April 3, the Teachers College swimmers met the "Y" girls at the Y. W. C. A. pool. The following events were held: crawl for fifty yards and twenty-one yards, twenty-one-yard breast stroke, plunge for distance, diving, relay, and exhibition diving. Two comedy races, a candle race, and a balloon bust concluded the meet.

Under the managership of Marion Donaldson and the assistant manager, Edith Gaines, swimming was a popular spring sport. The following girls took part: Iris Howard, Roberta Keily, Claire Roland, Katherine Lawson, Bertha Mahikoa, Edith Gaines, and Marion Donaldson. To receive fifty W. A. A. points the students were required to have ten practices, and compete in the meets.

Great interest and enthusiasm were shown at the interclass swimming meet which was held during the last week in April. Some of the most outstanding events included: the fifty-yard crawl, the twenty-one yard breast stroke, plunge for distance, relay, diving, and exhibition diving, a candle race, and a balloon bust.

Swimming was one of the leading attractions at the Play Day with San Jose State Teachers College, held Saturday, April 6, 1929, at the Fleischacker Play Field and Swimming Pool. Girls who wanted to enter the swimming contest were divided into four teams regardless of their Alma Mater, and the winning team received their awards at the luncheon. Swimming students acted as officials for the events.



MARION DONALDSON
Manager



HOWARD

GAINES

MULVIHILL

ANDERSON



THELMA WHITBY
Manager

Speedball and Baseball

Under the competent management of Thelma Whitby, speedball was run off the early part of the second half of the semester with an indoor baseball tournament at the end. There were about fifty girls who signed up for speedball and a much larger number for baseball. The senior class won the tournament. All the other classes furnished good competition and showed much team work. This was the first term that baseball had been played, and a new baseball diamond was laid out in the new gymnasium.

A double round-robin tournament was scheduled in baseball by Thelma Whitby. The classes played each other twice. The baseball schedules were followed up by visits by some of the girls to the San Francisco Recreation Ball Park where they watched the Coast League baseball games. Baseball was one of the most popular spring sports on the Women's Athletic Association calendar. A girl who expected to get fifty W. A. A. points was required to come out for both speedball and baseball, as no points were given for just one of these sports. The girls were so enthusiastic about the brand new sport that arrangements are being made to continue it next term.



Back row: MICLO, FOSTER, JOHNSON, DONELON, WHITBY, STEGEMAN, O'NEIL, RITTER,
KOLEN, MOORE, MURPHY
Middle row: SMITH, EGGERS, GARVEY, MCGLOIN, MULVIHILL, VIERA, MALLOY, BOEHM, SMITH,
MORTIGIA, ROLAND, SMYTH
Front row: ROMANI, GIFFORD, POMETTA, DORTIGNAC, BURKE, JOHANSEN, O'FARRELL,
GIOVANNONI, STEVENSON, GAINES

Play Day

The third annual Play Day with San Jose State Teachers College was held Saturday, April 6, 1929, at the Fleischacker Play Field. Two hundred and twenty-five girls participated in the play for play's sake, and not for competition. Girls were grouped according to ability.

Anna Johansen was chairman of Play Day. True Gifford, Kathleen O'Farrell, Betty Stevenson, and Mary Smyth were team managers. The plans for the luncheon were in charge of Lois Harding. Six volley ball games, two baseball games, and two speedball games constituted the team game events. The individual events included: swimming, golf at Lincoln Park, tennis (doubles and singles), and horseshoes. The first events of the day were relays of many varieties. The committee in charge of the Play Day divided the participants into four teams. As there was no competition between the colleges, the girls from both institutions were put evenly on the four teams. After all the events were run off, everyone went for a swim at Fleischacker pool.

At one o'clock an informal luncheon was served at which the San Jose girls were guests. Awards were made to the swimming team. Entertainment was given by both colleges. Speeches of welcome were given by Anna Johansen and Miss Hale. Miss Winifred Von Hagen, State Chief of Physical Education for Girls, was among the guests. According to everyone who participated in or attended the Play Day, it was a decided success.

Women's Athletic Association Night Rally

The W. A. A. ended its fall semester activities with a Night Rally which was held in the new gymnasium, Friday evening, December 7, 1928. The Rally was opened by Anna Johansen, president of the W. A. A., who welcomed the assembly. Following the welcome, the Championship Limited Division Basket Ball game was played by May 1929 and May 1930. May 1930 won after a hard battle.

The Everett Junior High Girls next entertained the audience with tap dancing and tumbling events. They were followed by the big event of the evening, the Exhibition Unlimited Division Basket Ball game, May 1929 champions versus a picked team. The May 1929 champions, under the leadership of "Jo" Mulvihill, were victorious with the score of eighteen to eleven.

Dean DuFour then presented the awards. Winged "TC" pins were awarded to: Josephine Mulvihill, Mary McGloin, Lillian Bianchini, Christine Minetta, Uarda Shuldt, and Constance Powers. Block "TC"s were given to: Marion Donaldson, Alberta Stegeman, Dorothy Eggers, Anna Johansen, and Mary Smyth. Class numerals were presented to: Leah Boehm, May 1930; Kathleen O'Farrell, May 1930; Thelma Whitby, May 1929; Alice Garvey, May 1930; True Gifford, May 1930; Nora Murphy, May 1929; Gola Sanders, December 1929; and Claire Roland, May 1930.

1950

Revelations! Twenty years will pass, then there will come Milady of 1950. What will she be like? Will she follow a trend of life to travel in cycles, returning to the customs, the styles, and the habits of other ages? Or will she continue to throw off the restraining influences? Our guess is that she will follow the latter course.

We picture her as a girl supreme; free, gracious, confident, yet not arrogant, modest, yet not prudish. The present-day flapper-type will have passed away, leaving behind her all her many fine qualities, and taking away her several faults.

Milady of 1950! We do not know, we cannot know, what she will be like, but we are sure that she will show the same wonderful advancement, that has marked each distinct period of American womanhood since the Revolution. We picture her zooming through the clouds in her plane on some obscure errand; perchance it may even be to court a handsome lad! Who knows?

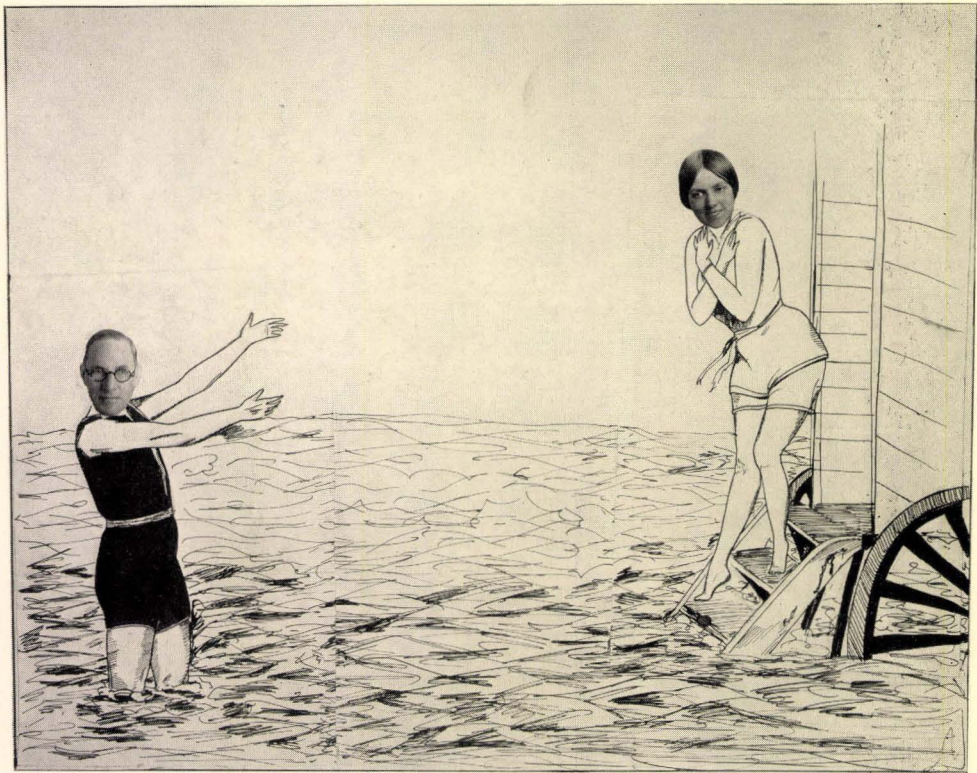




Features



The Snuff Box



"No harm shall come to you"

A Day at the Beach

Dignified college professors and their equally dignified students don't, as a rule, lose their reserve in public places; so these two pictures probably demand an explanation. You see, it was this way. Everyone grew tired of school one day, and so Dr. Valentine said, sez he, "Let's go out to the beach and make whoopee!" Some of the students wanted to stay and have classes, of course, but the majority went. These are two of the many views taken along the beach line, on the afternoon of our college outing.

Now above we see Dr. Valentine and Mrs. Scott in a playful moment. There are a couple of stories about the incident depicted above, but we can't vouch for the truth of either of them. Perhaps the more plausible is this: Dr. Valentine, feeling the need of publicity for our college, suggested that he and Mrs. Scott start training for a Golden Gate swim. Imagine! Mrs. Scott looks rather backward about going forward because she had an unpleasant experience in the water last Sunday. Mr. Boulware ducked her, and she swallowed a clam, nearly strangling. Who wouldn't be timid!



"Sea Bathing at the Cliff House"

The Same Day—but a Different Peach

The usual formality existing between faculty and students seems to have vanished completely in this scene above. Dr. Valentine is *so* brave and fearless way out there on the surf-board. We wonder if he knows that a lot of man-eating sharks are following him, just waiting to bite his pink little toesies! Another person we are worrying about is Miss Carter. If she doesn't move *very* soon, her day is going to be spoiled!

What is wrong with this picture? A physical education teacher waives her arms helplessly in air, while an English teacher, with calm, deliberate strokes, swims to her assistance! Two young, strong girls hang idly over the edge of a boat, while a dignified dean is obliged to bail their leaky barge!

What is this power Mr. Mundt has over women? He has hired two gentlemen of the faculty, to help him try to keep the ladies in their places. One of these assistants uses brute strength, the other more persuasive means. One daughter of Eve beams as she listens to his favorite record, while another admirer sulks in the distance. Mr. Ray is disgusted with the whole ridiculous affair! And can you blame him?

Now this is a secret! The other day I overheard Dr. Roberts saying that next year he was going to set aside one day each month for a trip to the beach. That is something to look forward to, huh?



Willie was struggling through the story in his reading lesson. "No," said the captain," he read, "it was not a sloop. It was a larger vessel. By the rig I judged her to be a-a-a. . . ."

The word was new to him.

"Barque," supplied the teacher.

Still Willie hesitated.

"Barque," repeated the teacher, this time sharply.

With an apprehensive glance around the class, he shouted: "Bow-wow!"

Any Prof.: "Why were you tardy?"

Elizabeth Boland: "Class began before I got there."

"Let us," said the alderman, "put our heads together and make a concrete road."

Beginner (after repeated failure): "Funny game, golf."

Caddie: "Tain't meant to be."

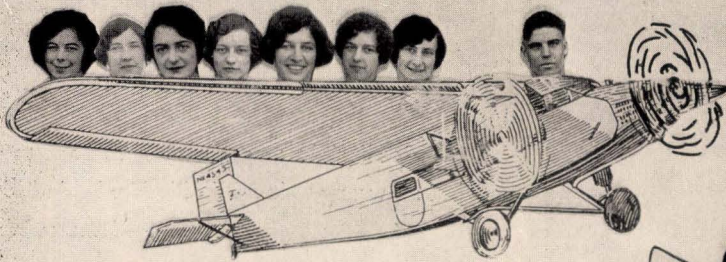
"Hello?"

"Hello! Who is this?"

"This is Boo."

"Boo Hoo?"

"Oh, I wouldn't cry about it!"



Advantages of Air Mail.



Whoopie!
Lraggity
Varse



Lon Chaney

Merrily we roll along - tum, te, tum!



Found - the
Lost Chord!
(Apply Lost
and Found Dept.)



Out of
Order.

Quotations from the "Hall of Fame"

"It's all right to pat a person's back to his face
but all wrong to laugh in his face behind his back."

—STILLMA WAIGER.

"Do right and fear no man. Don't write and
fear no woman."

—KILLIAM WNUTH.

"Imagine little ducky's embarrassment when he
found his first long trousers were 'down'!"

—MOOTH CAMULLOUGH.

"Don't become discouraged if you have a cold in
your head. Even that's something."

—SHEETA REELS.

"When you argue with a fool be sure he isn't
similarly occupied."

—BON JUTLER.

"About the most successful method of farm-
relief is driving to the city and attending a movie."

—KARY MOU LLEINECKE.

"Fatalities statistics for the past year fail to men-
tion the large number who were tickled to death."

—CRARA CLUMPTON.



Pat: "You didn't know who I was this morning, did you?"

Bert: "No. Who were you?"

Gay: "Can you teach the 'guzintas?'"

Betty: "What are they?"

Gay: "Oh, you know, two guzintas four, and four guzintas, et cetera."

"Well," said Barbara, at the end of Christmas vacation, "now I'll get back to normal."

Helen: "Your friend is Scotch, isn't he?"

Pauline: "Yes, but how did you know?"

Helen: "He took off his spectacles and licked them after eating his grape fruit."

"Well, Prof," said Helen Elizabeth, loading her revolver, "it's not too late to hand in a report?"

"A good example of nonsense," said Evelyn, "is an elephant hanging over a cliff with his tail tied to a daisy."

Little Boy: "Please, may I have my arrow?"

Dot: "Certainly, where is it?"

Little Boy: "Sticking in your cat."

Dr. Biddle (in Biology): "Next time we'll study about the famous 'Rosetta Stone.'"

Fritzie: "Who is she?"





"Gentlemen of the Dollar Steamship Line: Enclosed you will find \$1.00 (one dollar) for which you will please send me one of your dollar lines."

First: "That certainly was a dry town."

Second: "Strictly enforce prohibition, eh?"

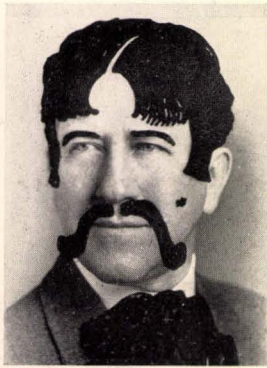
First: "Do they? Why, only those who have been bitten by a snake can get a drink, and they only have one snake in town. The last time I was there I stood in line for half a day, and when I got to that poor snake, he was too tired to bite me!"

The Worm Turned

Two fishermen were having no luck with flies. One suggested that they soak an angleworm in whisky and try that. So a fat worm was obtained, put in the bottom of an old can, and some whisky poured over him. The worm was then impaled on a hook and cast into the lake.

Immediately the waters became violently agitated. The rod bent double and the fisherman in desperation grabbed the line. He tried to pull it in, but his companion had to come to his aid. Together they slowly reeled in, to discover that the angleworm had seized a big trout by the throat and was choking it to death!

"Now I ax you," said the Indian as he raised his weapon over the victim.



DR. ROBERTS
Master of Ceremonies

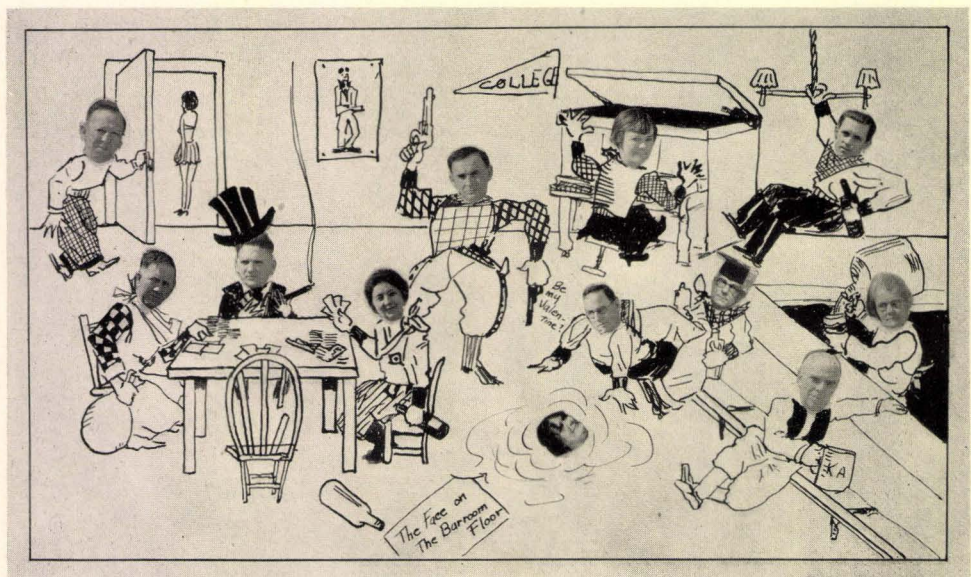
The Truth about Faculty Diversions

One dark night a certain freshman saw a crowd of faculty idols slipping slyly along an alley. She followed them to their destination. "Shorty" Roberts' place at the beach. My! She promptly fainted. Two hours later her benumbed senses cleared, and she gazed with a heart of stone at the sight before her.

"So it's true," she pondered, "what they say about Mr. Morse. He smokes! And Mr. Ray! He seems so at home hanging from the chandelier. Maybe—but then I don't believe in evolution! Listen to Miss Kleineck's hot music. Whee! Bet she's been taking jazz lessons from Miss England. Oh, I do hope Mr. Butler puts those guns down soon!

They might go off and hurt someone. I believe he's already shot poor Dr. Biddle, from the way he's leaning there. Either that or—. Dean DuFour, in spite of his academic hat, scarcely seems to be acting in a professional manner. Dr. Valentine seems in high spirits, and is giving his version, with gestures and illustrations, of that well-known little ditty, entitled "The Face on the Bar Room Floor."

"Dr Roberts seems to be winning at Casino, but Miss Ward's gun looks dangerous; I'd be careful if I were he. Or maybe it's bridge they're playing, and Mr. Boulware, the dummy, isn't very interested in the hand, and is seeking diversion elsewhere. And oh, Miss Burkholder!" The disillusioned student has proof of this affair, and, as seeing is believing, take a look!



"Through the eyes of the camera"

This Younger Generation

Our little freshman then began to worry about some of her student idols. If the faculty couldn't be trusted—well, the situation could bear investigation.

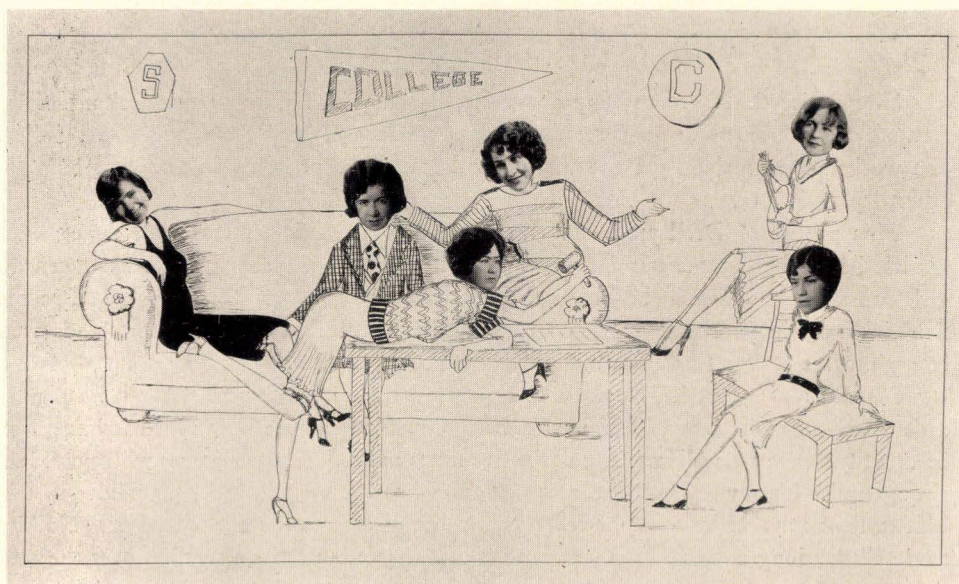
Once more she quietly followed. A chattering, happy group stalked boldly down a lighted street and entered a quiet home. The sleuth tiptoed into the hall and peeked into the room where the girls were gathered.

"What a relief," she sighed. "They are all perfect little ladies, and this is Saturday night, too. They seemed to have formed a club of some kind, and 'Connie' has just called the meeting to order. They are discussing 'The Advisability of Sending Bedroom Slippers to All Orphaned Centipedes.'" I don't think Lois has a very commendable attitude; she isn't giving the weighty matter much consideration. Now look at Anita and Lucile! Such concentration! Babe is so naturally musical that she can't put her banjo down, but her mind hasn't wandered far from the business at hand. She looks fairly intelligent. Now Velma looks interested, but not in the meeting. She apparently is going out later in the evening, probably with her father to a lodge dance, or some such. My, how glad I am to see these girls happy at such viceless pastimes. Once more I have faith in human beings!"

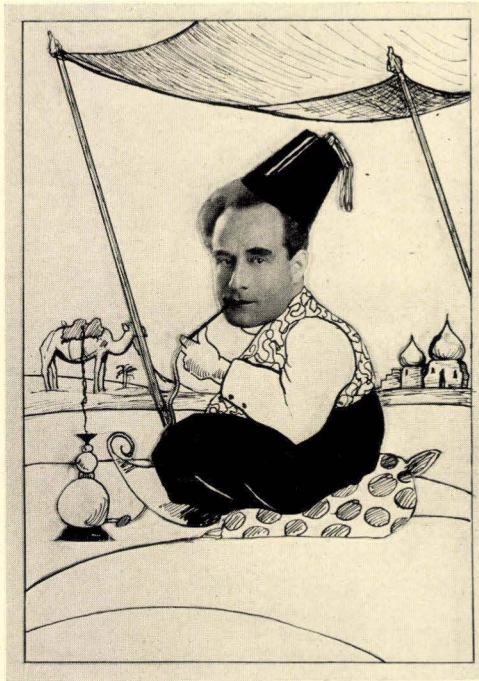
Contrast the two scenes this student photographed, and judge for yourself on "this younger generation." Who'd ever think it? But pictures don't lie!



"PAT" SCHULZE
Honorary Member



The Ata Bita Pi Club



Dr. Manley Step-ins, of Yarvard

“Oration on the Necessity of Keeping the Ankles Well-Covered”

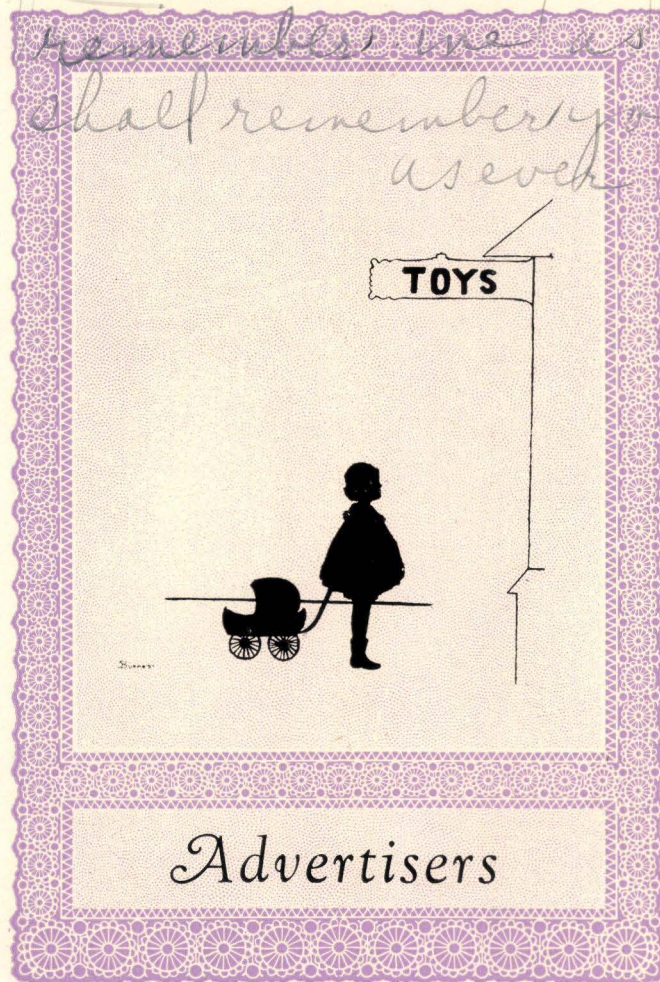
Ever notice the air of mystery about Dr. Rypins? Every know that Sultans of the East are a mysterious lot? Ever see Dr. Rypins’ ankles? Ever put two and two together? We worked the problem, got the answer, and found the proof in an ancient album the other day.

This picture of Dr. Rypins at the tender age of twenty-two erases all doubt about his life before he became our illustrious professor, and it explains why Social Science I girls are all so fascinated—he has the “Desert It.” Now about these ankles! You see, habits formed in youth are hard to forget, and the little boys of the desert lands wear baggy bloomers. That explains his attitude regarding ankles.

Do you notice that little palm tree right under the camel’s neck? Well, he planted a date seed when he was a little boy, and it grew. You can see how much it has grown in about fifteen years, and now it is about five times as tall. Well, well, trees will grow! He’s sitting under his own private little canope, and has his own little flying pillow to take him to his home. How could he leave such a life of ease to become a teacher? Nothing to do all day long but curl his shoes, smoke that magic lantern, and gallop over the sand dunes on Hortense, his own private little camel. Oh, for a life on the burning sands! Such sacrifice to higher education should certainly be known and appreciated.

Dear Dot -

of course I had to write
on a new page - but that doesn't
mean I consider you a new
friend - Here's hoping you'll always
remember me as long as I
shall remember you
as ever - Pauline -



Poor ink
Poor pen
Poor printing — Amen

Sincerely Kenneth Haberdier

Advertisers

May you have
luck with your
boy friends.

of the

Lucien H.

1929 FRANCISCAN

Who have in great part
made possible the
publication of
this Annual

Dear Miss Eggers.
I will all
ways remember
you as one of our
best teachers. I also
wish you all
the luck in the world.

Dear Miss Eggers,

Love
Jean Jeffery. I wish you luck
and joy in the future

Miss Eggers,
This is wishing you
all the luck and happiness
there is.

Ruth Jarcke

Mildred H. Jacobson

Just to

Cups
buns
tea
and

Cups
Cups
Hiccup's

Robert Chamberlin

Spencer
Miss Eggers
8:30 P.M.

out in
the future.
OK

Compliments of the

Truck in
the future
Dot

JOHN FISKE

C L A S S

of

MAY 1929

Miss Eggers
is a little star
riding in a street car
when the car rounds
off the track Miss Eggers
wants her nickel back

Robert Morant

Poor ink
Poor pen
Poor writing



AMEN

I wish
you luck
in the
future.
Marjorie Lee

I wish you were my
chimpanzee in which
you get. I drink
my tea and every
rip you'd take you
would go to ball-
game with me

Lots of Luck

Ernest Schupp
"Schupp"

Dear Mrs Eggers: Miss Eggers
little bits of Vorders
little bits of Paint
make a little girl
look like what she is
from your pupils
that you have been so nice
to (relieve) Brenda

Banquets. Weddings
**WARREN B. HAYWARD
CATERING CO.**

Specialists in Frozen Dainties
Punches, Ices

Chairs, Tables, Silver, Linen and China
Rented

Lunches, Teas, Dinners, Parties

3210 GEARY STREET
Hayward Bldg.

Telephone Bayview 72
SAN FRANCISCO, CALIF.

Soracco & Co. Telephone Garfield 3786

LIGURIA BAKERY

Families Supplied with Italian and
French Bread
All Kinds of Galetta, Grissini, Bucleatto
and Panettone
Special Biscotti di Lagasso
1700 STOCKTON STREET
N. E. Cor. Filbert Street
SAN FRANCISCO, CAL.

**Hamberger's
DRESS SHOP**

Home of Hollywood
High-Tie Dresses

**Gus'
"Sweet Shoppe"**

"THE GRANADA RETREAT"

Refreshments of all kinds. An ideal
place to bring your friends.

Malted Milk Specialties

38 JONES STREET

Telephones
West 2000 Burl. 3478

San Francisco Laundry

A Soft Water Laundry
Finished and Unfinished
Services

Compliments of

"THE BOOKANEERS"

A society organized to promote interest
in worthwhile reading, appreciation of
literary values in our environment, and
good fellowship.


To Miss Dorothy Eggers
from your pupil
Evelyn Bregy

With love
your pupil
Marguerite
Johnson

Compliments

Yours till
(Lamb chops)
Lew & Dick

Dear Miss Dorothy ^{of} Eggers
You have been a very
nice teacher. I want to
wish all the ^{The} Luck & happiness
in the world. Dorothy Morris
STUDENT BODY

Dear Dorothy Eggers,
Remember me by the river,
remember me by the lake, remember me
on your wedding day and save
me a piece of cake.  your pupil
Muriel Stieper

Miss Dorothy Eggers,
from
Florence Bradshaw

THE SAN FRANCISCO BANK

SAVINGS

COMMERCIAL

INCORPORATED FEBRUARY 10TH, 1868

*One of the Oldest Banks in California,
the Assets of which have never been increased
by mergers or consolidations with other Banks*

MEMBER ASSOCIATED SAVINGS BANKS OF SAN FRANCISCO
526 California Street, San Francisco, Cal.

December 31st, 1928

Assets \$123,780,369.02
Capital, Reserve and Contingent Funds 5,150,000.00
Pension Fund over \$635,000.00,
standing on Books at 1.00

MISSION BRANCH Mission and 21st Streets
PARK-PRESIDIO BRANCH Clement St. and 7th Ave.
HAIGHT STREET BRANCH Haight and Belvedere Streets
WEST PORTAL BRANCH West Portal Ave. and Ulloa St.

Interest paid on Deposits at the rate of
FOUR AND ONE-QUARTER (4¼) per cent per annum,
COMPUTED MONTHLY and COMPOUNDED QUARTERLY,
AND MAY BE WITHDRAWN QUARTERLY

Compliments
of the

NYODA
CLUB

FINEST
in
Studio
and
Home Portraiture

KEE COLEMAN
426 17th STREET
OAKLAND
Opposite Post Office
Phone LAKeside 2530

J. H. ROBINSON
& SONS

ESTABLISHED 1884

GROCERS

478-480 Haight Street

Telephone

UNderhill 4466

UNderhill 2234

Dresses
for all occasions

Expert Marcelling
Permanent Waving

Flora & Mae
Beauty and Gown Shoppe

HEmlock 9352

316 Fillmore Street

Compliments of

C l a s s

of

December 1931

Victor and Columbia Phonographs and Records
Telephone MARket 8036

Waters & Ross

Distributors of
HOLTON Band Instruments

Band and Orchestra Music
Sheet Music & Musical Merchandise

Expert Repairing

1155 Market Street

San Francisco

Phone UNderhill 1922

Star Palace of Sweets

Quality Candies and Fountain Service

=====
Light Lunches

518 Haight Street

San Francisco, Calif.

A. & J. LEVIN
Leather Goods and Trunks

Exclusive Agents

Insured INDESTRUCTO Trunks

884 Market Street
Opposite Emporium

566 Market Street
Bet. Montg. & Sansome

Hathaway Press
Incorporated

Good Printing

Arts & Crafts Building
Phone GARfield 0216

500 Howard Street

San Francisco

EVER GOOD
BAKERY

500 HAIGHT STREET

Cakes for All Occasions
Light Lunches

SHERMAN CLAY
COMPANY



"Everything Finest in Music"

Mack International Motor
Truck Company

Eleventh and Howard Streets
San Francisco

Hotel
Mark Hopkins

NOB HILL
The Place in San Francisco to
Entertain

E. A. Gotelli Phone Garfield 3391 C. Mitchel

MITCHEL & GOTELLI
SERVICE STATION
Associated Products
Free Crankcase Service

COLUMBUS AVE. and GROVER
Opp. Filbert Street SAN FRANCISCO, CALIF.

PHONE GARFIELD 2396

The Athens Candy Store
HOME MADE CANDIES AND
ICE CREAM

1513 Stockton St. 520 Columbus Ave.
San Francisco, Calif.
ICE CREAM DELIVERED TO ANY PART
OF THE CITY

Trainer - Parsons Optical Co.
DISPENSING OPTICIANS

Telephone Kearny 2767
228 POST STREET, SAN FRANCISCO
Between Grant Ave. and Stockton St.

Viareggio Shaving Parlor

1467 Grant Avenue

Compliments
of
A FRIEND

Compliments
of
The
CLASS OF MAY 1932



STEHLEY'S Book Store

Dennison's Goods Stationery
Magazines Greeting Cards
School Supplies Books
Lending Library

1543 Ocean Avenue
Phone DELaware 2339

JOHNSON & WOOD

Jewelers

Diamond and Platinum
Jewelry of Quality

We specialize on watches
and carry the best
makes only.

Especially executed designs
for making your old jewelry
over will be furnished free
of charge and the work done
by competent jewelers at
reasonable rates.

150 Post Street, San Francisco

V. DELLA SANTA

F. CONTE

TELEGRAPH HILL GROCERY
Imported and Domestic Groceries
Fruits and Vegetables

Phone GARfield 2818 501 Greenwich St.
SAN FRANCISCO AT GRANT AVE.

E. DEMARTINI

LOUIS SEGALÉ

SEGALÉ & DEMARTINI
HARDWARE AND TOOLS

Contractors' Supplies—Electrical Goods

"Waterless Cookers" Kitchen Utensils

Paints and Oils Guns and Ammunition

454 Columbus Avenue
Phone GARfield 2108

At Stockton Street San Francisco, Calif.

Golden Pheasant
Candy

Compliments

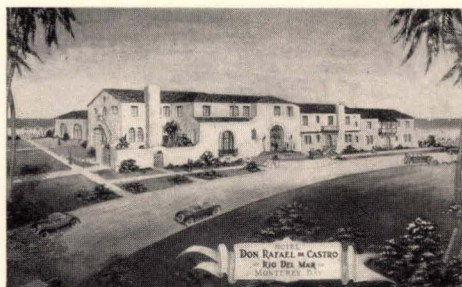
STONE CANDY COMPANY
Manufacturers
San Francisco, Calif.

Compliments of

CHANCELLOR HOTEL
Powell and Post Streets
at Union Square
SAN FRANCISCO

*"Comfort and Refinement
without Extravagance"*

Phone DOuglas 2004



On the sunnyside of Monterey Bay, Rio Del Mar, midway between Santa Cruz and Watsonville on the Santa Cruz-Watsonville Highway. Superb bathing beach 2½ miles long; open air plunge; polo; riding; hunting; fishing, and all sports, including privileges of Rio Del Mar Golf Course. In the center of and overlooking beautiful Monterey Bay.

All rooms, luxurious outside rooms with baths. Moderate rates. Personal comfort—service—pleasant surroundings.

RIO DEL MAR

SUNNYSIDE OF MONTEREY BAY

Compliments of



**C. F. WEBER
& COMPANY**

Service to the Schools

FURNITURE, SUPPLIES
AND EQUIPMENT

PHONE DOUGLAS 3601
609 MISSION STREET
SAN FRANCISCO

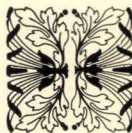
Compliments of

FRIENDS

Compliments of

A FRIEND

Compliments of the
C L A S S
of
DECEMBER 1929



Style
Distinction

Wide Variety

Shoes for every member of the
family with quality the
first consideration.

Sommer & Kaufmann

Georgous, Rich Wavy
NESTLE CIRCULINE

Permanent Wave

\$8.75



Reset Four
Months Without
Charge

No kinks, no frizz. Tight, wide or
medium, as you prefer, leaving the hair
soft, pliable and glossy.

BETTY'S

Permanent Wave Shop

177 Post, Rm. 604 KEarny 2235

Men and Women Specialist
Operators

OPPOSITE WHITE HOUSE

Compliments

DR. ROBERT GROSSO

Dental Surgeon

1432 STOCKTON ST.
SAN FRANCISCO

Phone West 2510

Snow White Cleaners

Ladies' Cleaning a Specialty

1781 FULTON STREET
Near Masonic Ave.
SAN FRANCISCO, CAL.

GREETING CARDS

For Birthdays, Weddings, Anniversaries,
Graduations and for all other
Special Occasions

Phone Randolph 0208

Ocean Ave. Stationery Store
1612 OCEAN AVENUE

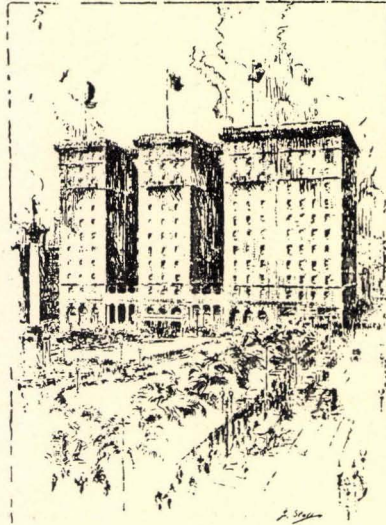
G. PUCCINI

Superba Meat Market

Dealers in
The Choicest Meats in the Market

1660 HAIGHT ST.
Opposite Belvedere

Phones: MARKET 3438, MARKET 6234



HOTEL
St Francis
UNION
SQUARE
SAN FRANCISCO

Occupying a commanding position in the heart
of the city, it is the hub around which San
Francisco's business and social interests
revolve.

Rooms for card parties on reservation without charge

Management JAMES H. McCABE



Compliments of

CLASS OF MAY 1930

Angelini, Caesarina
 Bacheldor, Ellen
 Bacigalupi, Ellena
 Bacigalupi, Rita
 Bandettine, Edith
 Berman, Charlotte
 Boehm, Leah
 Berggren, Blanche
 Berkowitz, Esther
 Bird, Margaret
 Blaess, Barbara
 Brady, Kathleen
 Brennan, Margaret
 Brisbois, Rhea
 Cohn, Harriett D.
 Coleman, Ruth
 Conway, May
 Crozier, Olive
 Cusick, Edyth
 Dalton, Dorothy
 Davenport, Evelyn
 Dieguez, Carmen
 Debb, Ruth
 Decker, Florentine
 Donaldson, Marion Alice
 Donelon, Lucille
 Dortignac, Alice
 Dowling, Catherine
 Edwards, Elizabeth
 Enos, Viola
 Fabing, Margaret Inez
 Feldman, Margaret M.
 Ferrogiano, Virginia
 Foster, Gertrude
 Foster, Margaret
 Foster, Palmeda L.
 Fowden, Marie K.
 Freechtle, George
 Ganter, Madge
 Ganzenhuber, Evelyn A.
 Garratt, Elaine
 Garvey, Alice
 Gifford, True
 Gratiot, Alice
 Graves, Marion Cecelia
 Gregory, Sara
 Grimes, Elizabeth Claire
 Hacke, Arvilla
 Hamaker, Catherine

Hammans, Charlotte
 Hanley, Catherine Marion
 Hare, Marian
 Harrington, Janet B.
 Hauptli, Grace Margaret
 Heaney, Anita
 Heflin, Claudine Mary
 Hieronimus, Adele J.
 Holmes, Thelma
 Holly, Forresta
 Howard, Iris Ann
 Humphrey, Florence May
 Isaacson, Mildred
 Ivens, Ruth
 Jaeger, Frieda
 Jessie, Eleanor
 Johnson, Mae Ann
 Johnson, Allie-Mae
 Jones, Imogene
 Kagel, Bertha Blanche
 Keily, Roberta
 Kern, Minnie
 Koch, Regina Alvina
 Kollmar, Mae Ione
 Landon, Kathleen
 Langren, Helen
 Lenhart, Daisy E.
 Livermore, Violet
 Long, Johannah
 Lopesco, Saidie
 Luchesi, Lillian Catherine
 Ludwig, Freda Elizabeth
 McCaw, Essie
 McDonald, Pauline
 McGlynn, Niceta C.
 McHugh, Anna
 McKeever, Marie Antoinette
 Mahikoa, Bertha K.
 MacDonald, Eleanor
 Marraccini, Rose
 Martin, Teresa
 Martin, Margaret Mary
 Matthews, Alice
 Merz, Helen
 Miser, Frances
 Molloy, Thelma
 Moore, Audrey
 Moore, Teru

Mortigia, Mary
 Murray, Anna
 Mylius, Del
 Nelson, Emma F.
 O'Connor, Helen Frances
 O'Farrell, Kathleen F.
 O'Neill, Mary Madeline
 O'Sullivan, Catherine
 Padian, Helen
 Pometta, Florence
 Peppin, Eleanor Evangeline
 Prendergast, Marie Kathleen
 Rankin, Edith Grace
 Reid, Virginia M.
 Rich, Alice J.
 Riemen, Alberta E.
 Riley, Ethel
 Rimassa, Dolores Natalie
 Ripsom, Harriet
 Roland, Claire Therese
 Salmon, Fay
 Staples, Margaret A.
 Savio, Flora
 Saxe, Myrtle Helen
 Schneider, Minnie
 Schnitzuis, Mary Caroline
 Shoblo, Margaret
 Shea, Helen
 Singmaster, Leoma
 Smith, Anna E.
 Smith, Mildred
 Stasulat, Frieda
 Stelzner, Frances
 Stockinger, Elayne Oneita
 Strauch, Helen
 Taheny, Mary
 Twomey, Grace
 Vincent, Isabelle
 Wacholder, Esther
 Walsh, Vivian Marguerite
 Warth, Bessie
 Webb, Verda
 Wickbom, Rose M.
 Willis, Mrs. Dora A.
 Wilson, Annie Whiston
 Wong, Helen
 Woods, Winifred
 Zipser, Mary Ellen

PHOTOGRAPHS
Paralta Studios

Sittings in Home or Studio
by appointment

233 Grant Avenue
San Francisco, Calif.

SIENA CLUB

Catholic Boarding Home for
Young Women Students

Sponsored by
Archbishop Edward J. Hanna

One block from San Francisco State
Teachers' College, Cars 6, 7, and 17

Clubrooms available for parties

350 BUCHANAN STREET
SAN FRANCISCO, CALIF.

Compliments of

Constance Powers	Jacqueline Beedle
Natalie Mayo	Eunice Humphreys
Jack Foster	Janis Miller
Mae Gates	Pauline Ratto
Myrtle Saxe	Gladys Bryan

*Compliments
of the*

MAJESTIC PRESS

Compliments of the

FAIRMONT HOTEL

SAN FRANCISCO

Compliments of

Alice Olson
Victorine Murphy
Rita Shields
Gerrie Smiley
Sylvia Marcuse
Margaret McDougall

Telephone KE army 0862

City of Rome Market

NAT CEREGHINO & CO., Props.

Dealers in

First Class Meats

1310 Grant Ave. San Francisco

Telephone MAket 9101

Franklin Grill

Private Booths for Ladies

538 Haight Street, near Fillmore
San Francisco, Calif.

HACK'S BAKERY

Good Things to Eat



157 FILLMORE STREET

Phone DO uglas 4057

Italian-American Paste Company, Inc.

Manufacturers of High Grade

*Macaroni, Vermicelli and
Fancy Pastes*

466-478 Green Street
San Francisco

*Provide for the Future
While Protecting the Present*

Mrs. Della J. Wheeler

New York Life Insurance Co.

1686 Hayes Street - Apartment 1
Phone FILLmore 5565

14 Montgomery Street - Room 914
Phone DO uglas 6820

Personal Service

Niderost & Taber

INCORPORATED

*Wholesale Jewelers and
Diamond Importers*

126 Post Street - San Francisco
Fourth Floor
Telephone DO uglas 0928

Telephone UN derhill 4428

California Hardware Co.

Hardware - Electric Appliances
Paints - Crockery - Glassware
Artist's Supplies

520 HAIGHT STREET
San Francisco

J. Conterno

Chas. Verga



Conterno Hardware Co.

Dealers in

B. T. Counterphase

Radios Serviced

446 COLUMBUS AVENUE
Phone GA rfield 1865



Compliments of

Mario DeMartini

Celle Narciso

M. P. DeMartini

Attilio DeMartini

D. Mottiando

Cesere Merlino

Paul DeMartini

Louis Miravalle

Adolph Sanguinetti

John Segale

Emanuel Brinzo

Eugene DeMartini

Joseph DeMartini

Thomas Ferando

Silvio Segale

A. Descalzi

Giacomo Montedonico

A. Figone

Frank Segale

Toni Delartino

Augustino Calegari

Frank Cuneo

Louis DeMartini

John Garbarino

Enrico Andino

Paul DeMartini

John Maineri

PERMANENT WAVE
RUPNOW'S of Chicago
GILLETTE BLDG.

No Frizz & No Kinks
Nestle Circuline Machines

Latest Improved Steam
and Oil Method

Special Price \$6

A pleasure for you, as it lasts from 6 to
8 months. A large, loose flat wave marcel
effect with special care to ends. This price
includes shampoo and finger wave.

OUR WORK GUARANTEED ON ALL
NORMAL HEALTHY HAIR

EVERY OPERATOR
AN EXPERIENCED ARTIST IN
HER LINE

TEST WITHOUT CHARGE

NOT A SCHOOL!

For appointments call KEarny 7180

F. E. RUPNOW
830 Market St., Suite 804

Greetings from

THE
ART CLUB

Ballets Arranged

FAIRMONT HOTEL
Saturday at 2:30

WYATT SISTERS

IDA ISABEL

Instructors of
Grace Culture Technique
Ballet, Toe, Character, Fancy and
Ball Room Dancing
Opera classes now forming

Studio
2510 Washington Street
Phone West 9498
Between Fillmore and Steiner

Walnut 0106

Established 1886

M. SCHIMETSCHEK
ELECTRICAL CONTRACTOR

WIRING AND FIXTURES
—HARDWARE—

Estimates Given

526-528 Hayes Street
Bet. Octavia and Laguna

SUNSET FLORAL CO.

PRICE & BRUNDAGE
Designers and Decorators

Phone UNderhill 7422

1422 Haight Street

STEWART HOTEL

Excellent Meals at Popular Prices

SAN FRANCISCO

Portland

Oakland



Compliments of
George F. DeVincenzi

HOWARD AUTOMOBILE COMPANY



Phone GRaystone 2000

VAN NESS AVE. AT CALIFORNIA ST.
SAN FRANCISCO

HOTEL WHITCOMB

Only large hotel in the vicinity of the
San Francisco State Teacher's College
Roof Garden available for dances,
banquets, and student affairs

HOTEL WHITCOMB
at Civic Center
San Francisco

James Woods, President
Ernest Drury, Manager

TAIT'S COFFEE SHOP

"Good Things to Eat"

168 O'Farrell Street
64 Ellis Street

Pig'n Whistle

Famous for its
LUNCHEONS & DINNERS
and
FINEST QUALITY CANDIES

33 Powell Street
130 Post Street
621 Market Street
Telephone SUtter 5570

Compliments of

THE COLLEGE THEATER

KNOW ELLERY ARMS for dependable Sport Goods

Those "who know" have proclaimed our
offerings the last word in top-notch
equipment—the kind you want.

Prices no greater than inferior kinds.

Catalogue Free

The Ellery Arms Co.
585 Market Street San Francisco, Cal.

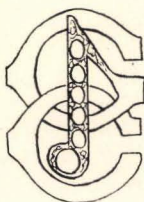
W. H. TRICE, Agent

The Insured Investment of the
New York Life

210 Post Street San Francisco

Compliments of

THE GLEE CLUB



THE BOSTON LUNCH, Inc.

GOOD EATS

SAN FRANCISCO

1123 Fillmore St. 95 Fourth St.
404 Kearny St. 1400 Polk St.
216 Third St.

OAKLAND—826 Broadway

STOCKTON—124 E. Weber Ave.

MAIN OFFICE

1400 POLK STREET
San Francisco Phone GRaystone 8821

HOTEL CANTERBURY

"An hotel with the Personality of a
well appointed home."

750 Sutter Street
SAN FRANCISCO

Wilson's Bellevue Hotel

Banquets, Dinner Dances
Restaurant, Soda Fountain, Candy

333 Geary—708 Clement
San Francisco, Cal.

WM. CAVALIER & CO.

STOCKS AND BONDS

San Francisco Berkeley Oakland

Compliments of
CLASS OF DECEMBER 1932

Phyllis Fibush	Frances Rozet	Novelle Berling
Ruth Lescinski	Belva Goodman	Jean Burnside
Amy Taubman	Alice Breheny	Anna Cameron
Stelter Oksen	Dorothy Singer	Marguerite Chase
Betty Martin	Henry Barsotti	Alton Cohn
Florence Cucchi	Ida Lane	Mary Fugitt
Elena Foppiano	Jane Rousey	Lurline Miguel
Christine Huttman	Henrietta Miller	Betty Maguire
Mae Quick	Mabel Park	Gladys Ogle
Violet Wilson	Mary Chaquette	Harriet McKay
Helen Pattinson	Laura Cardoza	Catherine Saadallah
Winifred St. John	Marcia Duden	Louise Powers
Jerry Smiley	Jane Grant	Marian Stahl
Viola Giesen	Elizabeth Best	Violet Wilson
Phyllis Gramm	Anna Bell Cameron	Mary Mohler
Mary Margaret Berner	Winifred Cummings	Ruth Mohler
Suzanne McCarte	Louise Powers	Evelyn Whelan
Ruth Herndon	Mildred Evans	Ciwa Griffiths
Oniska Saltzen	Florence Auld	Edna Husing
Katherine Lawson	Hazel Dell Adamson	Grace Pew
Madeline Meginness	Mary Louise Brendinger	Evelyn Sutich
		Dorothy Williamson

Compliments of
**Women's Athletic
 Association**



Compliments of

Elsie Breed	Fritz Jaeger
Emrose Findlay	Marian Burness
Agnes Watt	Louise Mayo
Jack Matthews	May McKinnon
Margaret Jung	Verel Burness

Compliments of

Catherine O'Sullivan
 Gerrie Egleston
 Ronnie Olson
 Henri Crawford
 Gola Sanders

Compliments of

THE SCRIBES CLUB

Beck-Gerlach Printing Company

548 Commercial Street, Cor. Leidesdorff

E. J. GERLACH, PROP.



HAVE you ever said when you've received a particularly attractive piece of printed matter: "This is what I call a fine specimen of high class advertising—this is the kind of direct mail literature I intend to send out to advertise my own merchandise."

Unless your printed message has distinctiveness and individuality—unless it properly reflects your goods and your business—wait until you can do the job right.

We have created and produced many printing orders that have been highly successful from the standpoint of results. May we show you some of these specimens of

*Better
Printing*

TELEPHONE
DOUGLAS 0401
*for a Service That
Really Counts*

"TILLIE'S"
College Girls' Haven

State Teachers' College Supplies
Sandwiches, Candy, Ice Cream,
etc.

136 Fillmore Street • Phone MArket 8863

**ITALIAN
CENTRAL
MARKET**

A. Bianchini
Groceries

1721 Grant Avenue

Mrs. J. Heath

Stationery and School Books
State Teachers College Supplies
Ladies Ready-to-Wear

129 Fillmore Street San Francisco

Schmah's Delicatessen

A big variety of smoked meats
and sausages.

505 HAIGHT STREET
Phone Underhill 3043
San Francisco

Granuci Grocery Co.

1401 Grant Ave., San Francisco

Real Silk Hosiery

810 PACIFIC BUILDING
Sutter 1289 San Francisco

Compliments of
Godwin's Grocery

2250 Dwight Way, Berkeley, California

E. De Martini
SHOE REPAIRING SHOP

Best Material Used
1552 Stockton Street, San Francisco

Thanking State Teachers' College for Their Patronage

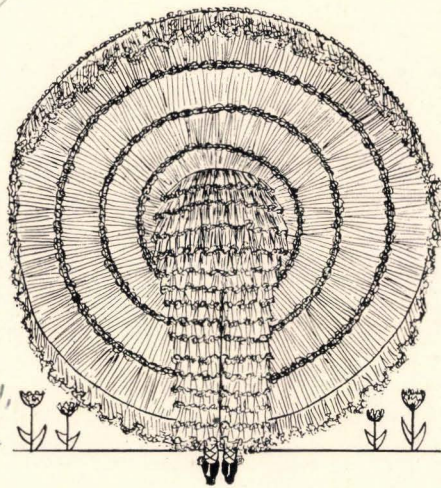
Dixie Dixons Shoppe

494 Haight Street • San Francisco

LUNCHEON • CANDIES • ICE CREAM

Dear Friend -
 Friendship is a golden word
 clasp it to your heart
 it was in friendship that we met
 in friendship let us part
 & live

Dear Dot
 May our love
 increase as
 hate toward
 increases
 Mary Mc



Our secrets are all revealed
 and we have nothing
 more to tell you.

Dearest Dot:
 Even though you
 are graduating, here's hoping
 that we will spend many
 more pleasant hours to
 gether, smoking our peace
 pipes. Lots of love
 Pe,

DEAR SIS:
 MY LOVE 4 U
 Flor

Dear Dot -
 In memory of
 Biddle's class. Pat nohescent
 Love Anita

Dear Dot:
 I wish you all
 the best of good luck. Don't
 forget our basketball team.
 We are a pretty good team
 but we have been beaten
 by the other teams. You are
 the champion. The teacher
 says you are the best in
 the school.

Dear Dot.
 although you
 forget all your
 history, be sure and
 remember I rank him
 cause me and Benny
 are chums. You know
 why. Benny liked his pep
 I crave you know
 than that I'd be sure and
 remember
 Dear Dot,
 Here's wishing
 lots of luck
 Lois Harding

Dearest Dot.
 I love you
 boyfriends! But I
 love you more.
 I'll be your future
 many

To a peach of a girl
 who has been as sweet
 as a peach to me -
 mac

Classes. Eggers & Findlay
 were placed near to
 gether because of
 the alphabet. There
 I hope we'll
 play near together
 for better reasons.
 Love - Emrose.

DOT TEAR
 LOT OF LUCK
 Love and
 kisses
 from your
 boyfriend

Dear Dot,
 Hope you will always
 mean what I mean
 smile that has made
 you so many friends
 Lots of love
 Ann.

Dear Dot.
 Congrats for winning the
 Basket-ball, but you ought
 be ashamed you are Mark.
 However, love from
 Al. Harvey

Dearest Dot:-
 With a smile
 as yours dear,
 life is worth while!
 May you always be
 as sweet throughout
 your entire life!
 Love: Logo

Dearest Dot,
Remember
your old pal
who used to join
you at Cochet's,
and think of me
often,
Lots of love,
maie C.

Dear Dot,
Just remember me as one of the
cleverest ones whom you ever asked
to write in this annual. This is
a little hint for you to ask only
smart ones in the future to write
a line here. Best wishes, Dot.

Sam.

Dear Dot.
I wish you all the
luck in the world, and
hope that you never forget
the fun we've had.
Love
Marion

Dear Dot:
Always remember
your most willing
pupil and blue
chaser at Franklin
Chase's. Love
Lillian Brown

Dear Dot
In this golden chain
of friendship accept me
as a link.
Marion Watson

Dear Dot,
I hope you enjoy
real teaching better
than this.
Margaret McLeod

Dear Dot,
Well, our three years
are over. Remember our
good times.
Good luck & love,
Vic

Success!
Grace Hackett

Dear Dot,
All I can say is to
wish you a lot of
luck. With best
wishes,
mine

Dot dear
your old mud
hen - grow up for
the next Lucia tea
Success I mean
although I mean
nothing "Marge" lowie
sincerely
Concoran

Once in
awhile just
think of "Babi"
way up in Crockett

Dear Dot,

It seems too
bad that you haven't
a chair but in this case
it is beauty before age!
Always remember one of your
S.F.T.C. Classmates
Love
Bea

Dear Dot:

Loads of good
luck to you and
when you're an "old
maid school teacher"
be sure to look back
and remember eleven
o'clock at Frankline. Then
you can look for your
'Lucky Days' and remember
Kay will be doing the
same. Love Kay Hanley

Marge said so
much I don't have to say
anything but success
I love and success
Parathy Green

