

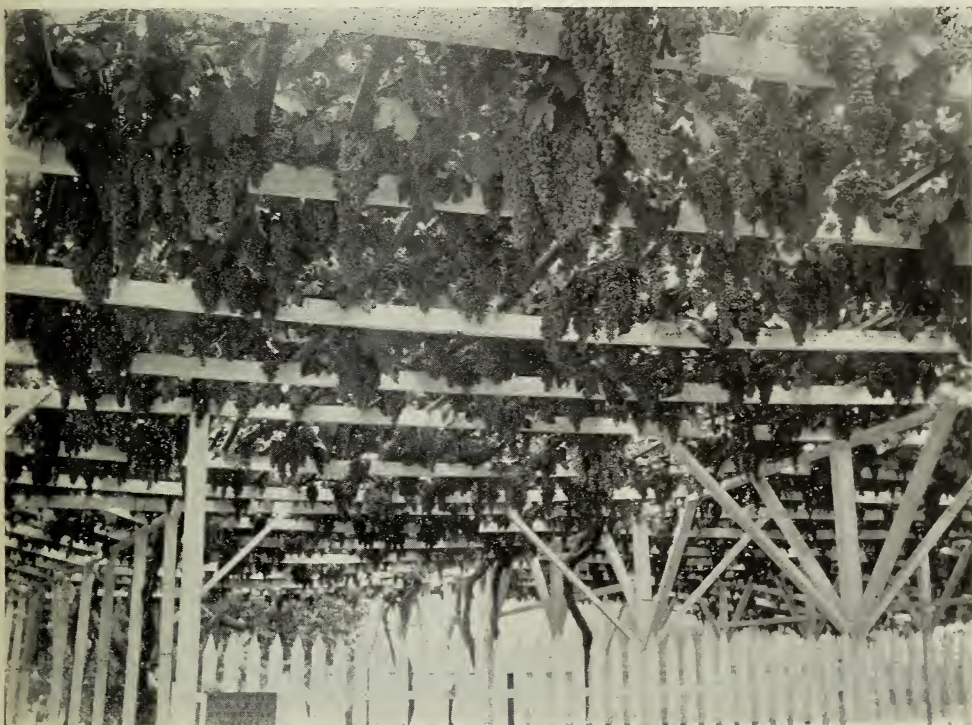
CLIMATE.

The climate of California is famed throughout the world. Nothing new can or need be said about it. No part of the State can claim a more delightful climate than Alameda County. This is easily accounted for. The winds from the Pacific, only twelve miles distant, during the summer months blow across the bay, and reduced to pleasant breezes by coming in contact with the hills back of Oakland, keep the air cool and invigorating, at the same time neutralizing and carrying away all noxious or disagreeable vapors, smoke, etc., which are insepar-

able of the County the same soil is found, having been washed from the protecting hills by the rains of the centuries. In it everything grows luxuriantly and continuously, the winters never being cold enough to stop the blooming of roses or the maturing of fruit or vegetables.

PRODUCTS.

The chief agricultural and horticultural products of the County are fruits of all kinds, wheat, barley, hay, vegetables and sugar beets. As high as ninety-six bushels of wheat to the acre has been harvested on some of the ranches in



GRAPE VINE AT ESTUDILLO HOUSE, SAN LEANDRO

able from a large city. These winds are caused by the heating and consequent rising of the air in the interior of the State and the rushing in of the cool air from the ocean to take its place. Average winter temperature 52 degrees; average summer temperature 67 degrees.

SOIL.

The soil along the forty miles of bay shore, extending back from two to six miles, is a deep sediment, having at some time been the bottom of an inland lake. In the magnificent valleys in the inter-

Livermore valley; the average being sixty bushels. The same amount of barley is harvested, the quality of both being unsurpassed anywhere. The acreage of grain is given elsewhere.

The profits of fruit growing, however, are so much greater than the raising of grain that large tracts of land in all parts of the county are being planted to trees and vines.

According to the report of the County Assessor there are 8,200 acres of grapes in the County, 55,500 apple trees, 110,500 cherry, 3,500 fig, 5,300 olive, 45,300 peach,