

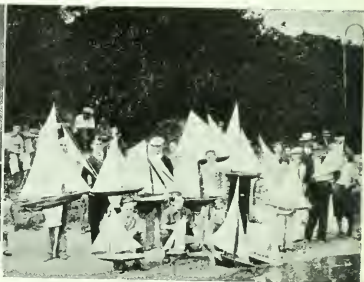
SCHOOLS

The Oakland School Department still maintains its nation-wide supremacy, both in buildings devoted to educational purposes and in courses of study offered and high character of instruction. The total enrollment for the year just passed showed an increase of nearly 1300 students over the previous twelve months. To care for these students the city maintains a staff of administrative officials, supervisory officers, principals and teachers, numbering, in the year just closed, a total of 1832. The Oakland School Department is rapidly nearing completion the five-year building program launched in 1924 and made possible by the bond issue voted by the people in the same year. The total issue of bonds amounted to \$9,600,000, of which \$4,974,000 were for elementary schools and \$4,626,000 for new high school construction. Thus, during the past five years, 775 new instructional rooms have been added to the department's facilities. New building construction has had the further benefit of the demolition or removal of many unsightly old buildings and temporary housing structures and in the improvement of school sites to the point where Oakland may be said to lead the world.

Oakland now has in use 10 high schools, 12 junior high schools and 53 elementary schools, a total of 75 fine, modern structures. The past year saw the completion of a new administration building at Second Avenue and East Eleventh Street, in the vicinity of the Auditorium, four new school buildings, and 12 additions, the latter consisting of assembly halls, classrooms, gymnasiums, libraries and shops. Schools to be completed this year will number three, and one addition, the total cost to be slightly over one million dollars. On the consummation of these projects the building program will be fully completed. I am glad to state that completion of the new school administration building on Second Avenue has made available the eleventh floor of the City Hall for city government purposes. This extra space has long been needed, and has resulted in a better concentration of City Hall activities within the City Hall itself. At the same time it has been made possible to house all the school administration, supervisory and business departments under one roof, resulting in better organization and coordination of the various departments of school activity.

Cost of school support in the City of Oakland is met through taxes levied by the Alameda County Board of Supervisors. The City of Oakland, due to various annexations, is divided into three general school districts. For the fiscal year 1929-1930 the school tax rates for these various districts are as follows:

Oakland (Oakland school district).....	\$1.64
Oakland (annex of 1909).....	1.64
Oakland (Bray, Elmhurst, Hayes, Highland, Fruitvale, Melrose and Lockwood)	1.62



Every school in the city participates in Lake Merritt activities. To the left is a representative Girls' Crew; to the right is a group of boys entered in a Model Yacht contest.