

Dr. Washington Dodge, Pres.

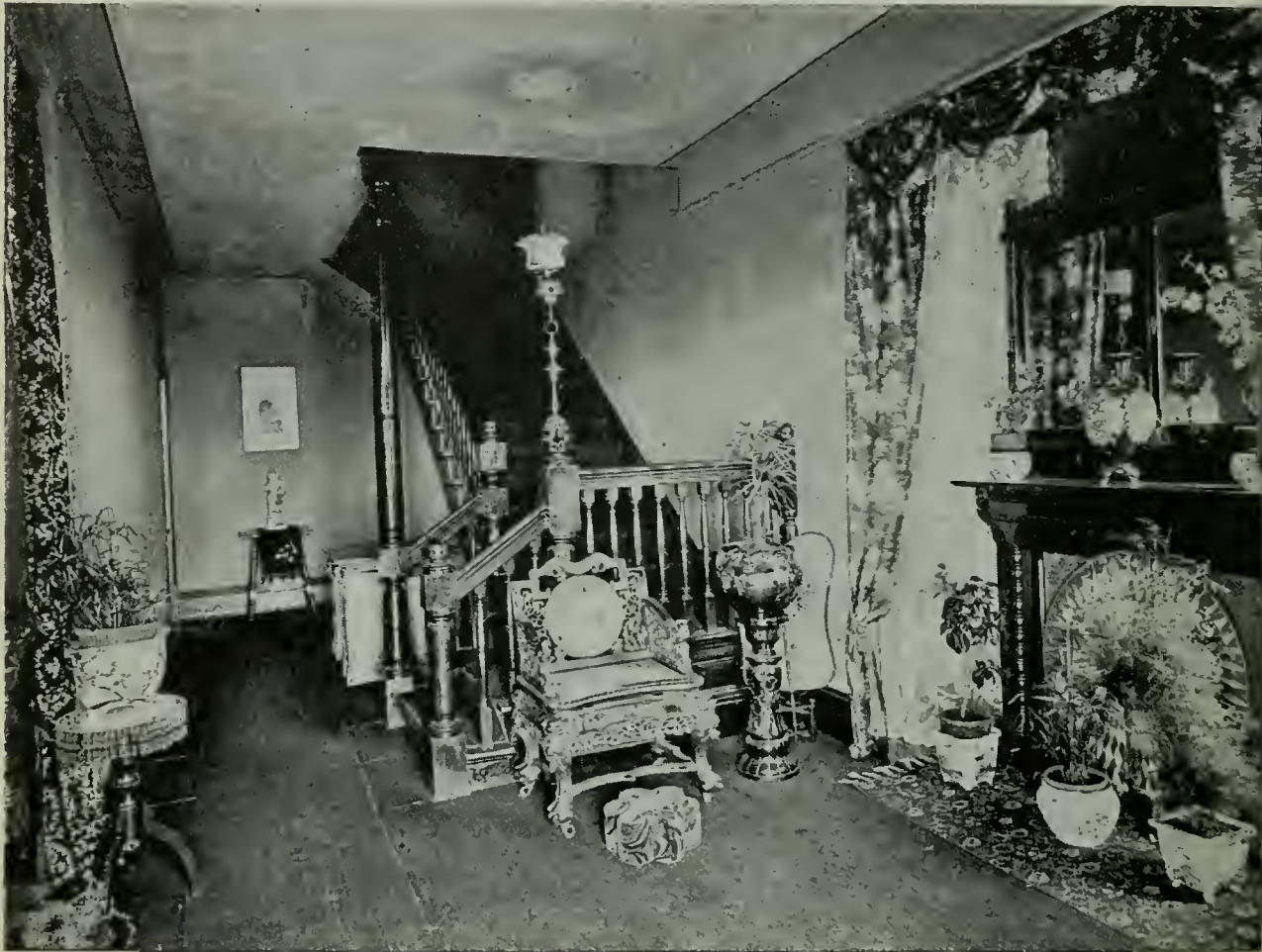
Wm. Corbin, Sec'y and Gen'l Manager

Continental Building and Loan Association

OF CALIFORNIA

301 California Street

San Francisco, Cal.



Established in 1889

Subscribed Capital.....\$14,000,000.00	Profit and Reserve Fund.....\$350,000.00
Paid in Capital..... 2,650,000.00	Monthly Income over..... 150,000.00

The Largest Association on the Pacific Coast
 California's Conservative, Prosperous, Progressive Company

Don't Borrow a Home, Buy It, We'll Help You