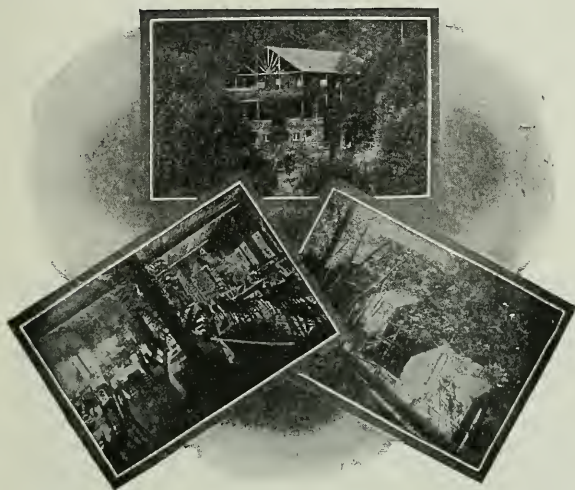


GLEN RITA HOTEL



MONTE RIO

One block from Northwestern Pacific Depot; auto bus meets all trains. Firstclass family hotel with every modern comfort and convenience. Electric lights and sanitary plumbing. All bedrooms are well furnished, equipped with floss mattresses, and have washstands with running water. Rooms may also be had with private bath. Tents are well shaded and within hotel grounds, built on platforms with board walls, front and side porch, electric lighted and furnished same as rooms. Large porches around the main building command a panoramic view of the entire scenery. Just a step to Russian River for boating, bathing and fishing. Dining room is large, airy and comfortable, and is noted for its excellent cuisine and service. Music is rendered during evening meal. In our new pavilion we have after-dinner dancing for the exclusive use of our guests. This resort is conducted in a strictly first-class manner, the main feature being assurance of a personal interest taken in the entertainment of our guests. Within hotel grounds, space is reserved for parking of autos. Make reservations in advance, especially in June, July and August, and give exact requirements in first letter to avoid delay. Can accommodate 250. Open May to October. Long distance telephone. Rates upon application. Send for illustrated booklet. Address:

WM. C. HEALY

MONTE RIO, SONOMA COUNTY, CALIFORNIA