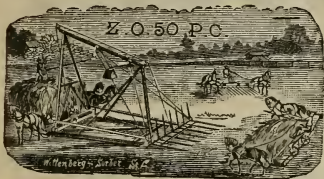


BYRON JACKSON,

Manufacturer of

Steam Engines, Threshing Machinery, Harrows, California Wind-Mills,
"ACME" HAY RICKERS,

All kinds of Castings, etc.



With the Rakes the hay is taken from the swath, when cured, just as left by the mower, or from the windrow or shock, if it is desired to cure it before stacking, and when the Rake is loaded it is driven to the Ricker, one horse on either side of the pitcher head, the rake teeth entering between the pitcher teeth, the hay is pressed forward against the pitcher head, the horses then back the Rake off, leaving the hay in a compact mass upon the pitcher and return to the field for another load. As soon as the rake is out of the way, the horse attached to the pitcher rope is started and travels about fifty feet, which brings the pitcher head containing the hay to a point slightly beyond the perpendicular, when the hay is dropped in the center of the stack, the horse is backed up, the pitcher being brought back to the ground by the action of the weight-box ready for another load. ALSO ADAPTED FOR UNLOADING HEADER WAGONS WITH NETS.

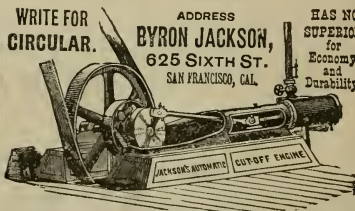
This cut represents my **NEW AUTOMATIC, PERFECT-REGULATING, VARIABLE CUT-OFF, STATIONARY ENGINE.** I claim that this engine is fully up to the advanced modern practice, both in engine and steam economy. In simplicity of mechanism, accessibility of parts, adjustment for wear, large wearing surfaces, and elegance of form, this engine rivals the latest productions of the best Eastern makers. I will build my engines to order of any size up to 200 horse-power. Also build, to order, portable and traction engines.

Write for Catalogue.

WRITE FOR
CIRCULAR.

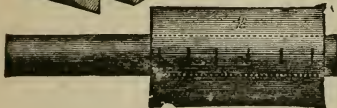
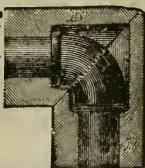
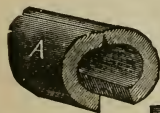
ADDRESS
BYRON JACKSON,
625 SIXTH ST.
SAN FRANCISCO, CAL.

HAS NO
SUPERIOR
for
Economy
and
Durability.



Patented Dec. 21, 1875.

Reed's Sectional Boiler
and
Steam-Pipe Covering.



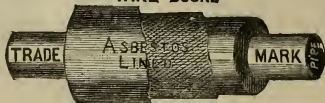
I. L. MERRELL,

AGENT FOR

Reed's Elastic Sectional Non-Conducting
COVERING FOR STEAM SURFACES.

OFFICE: 316 Townsend St.
BRANCH OFFICE, 22 CALIFORNIA ST.

WIRE BOUND



BOILER COVERING

I. L. MERRELL,

AGENT FOR THE

CHALMERS-SPENCE CO.

AND THE

Universal Wire Bound Asbestos
BOILER COVERING AND MATERIALS.

Also, Patented

Boiler Cleaning Liquid Compound,
For the Prevention and Removal of Scale in
Steam Boilers.

— AND —

ASBESTOS, STEATITE,
SOAPSTONE MASTIC ROOFING
And Paints.