

U. S. TIRE SUPPLY CO.

Larson & Nelson

DISTRIBUTOR
FOR

San Mateo County

U. S. Tires & Batteries
RETAIL & WHOLESALE

Recapping & Repairing
ONE-DAY SERVICE

WHEEL ALIGNING & BRAKE SERVICE
MOTOR TUNE-UP

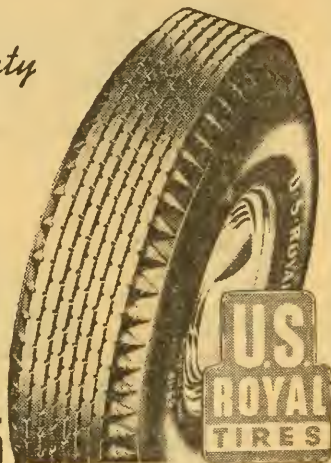
**Fleet Service
and Maintenance**

Telephone

Diamond 3-3635

California Drive and Lorton Ave.

Burlingame



Tire Chains

See Automobile Parts & Supplies Headings

Tires—Dealers

AULD-TENVOLD TIRE SERVICE
235-4th Av Sn Mto. DI mnd 4-1567
(See Advertisement Opposite Page)

BISSELL TIRE & BATTERY SERV STN
Broadway & Jefferson Av
Redwood City. EM erson 6-3845
(See Advertisement Opposite Page)

Burlingame Home & Auto Supply
233 Highland Av Brngm. DI mnd 3-4484

CENTURY TIRES—
LEWIS AUTOMOTIVE SERVICE
123, California Dr Brngm. DI mnd 3-6186

Dyer Tire Service
106 Baden Av South S F. JU no 8-1143

FELDMAN HARRY
868 Sn Mateo Av Sn Brno. JU no 8-5646
Firestone Dealer Store 701 Laurel . . . Sn Carlos 409

FIRESTONE HOME & AUTO SUPPLY STORES
174-3d Av Sn Mto. DI mnd 3-5665

FIRESTONE TIRES & SUPPLIES—
BURLINGAME HOME & AUTO SUPPLY
233 Highland Av Brngm. DI mnd 3-4484

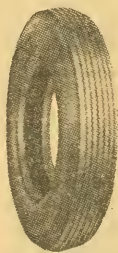
BURLINGAME MOTOR CO
1021 Burlingame Av Brngm. . . DI mnd 4-1794

DAVIES AUTO CO 1101 El Camino Rl
Redwood City EM erson 6-3886

FIRESTONE DEALER STORE
701 Laurel Sn Carlos 409

(Continued Next Page)

Telephone service is a friendly service. The people who operate and maintain it take a genuine satisfaction in serving you pleasantly and well. People who use the telephone a great deal find that friendliness is an instinctive habit. The telephone helps folks to know each other better.



SAFETY TREAD
PASSENGER DESIGN

Wheel Balancing by
"Magic Eye"

TRUCK FLEET SERVICE
& MAINTENANCE

TIRE SERVICE TRUCK & PASSENGER

RECAPPING & REPAIRING

*Expert Workmanship
Most Modern Equipment
All Work Fully Guaranteed*

NEW TRUCK & PASSENGER TIRES
BATTERIES • TIRE ACCESSORIES

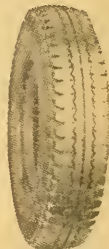
Phone JU no 8-7793

Retail & Wholesale

SOUTH SAN FRANCISCO TIRE SERVICE

PIMSNER & SON

409 BAYSHORE HIGHWAY
SOUTH SAN FRANCISCO
A Complete Tire Store



STOP-START TREAD
TRUCK & BUS DESIGN



RECAPPING

WHEEL ALIGNING &
WHEEL BALANCING

BRAKE RELINING

Official Station No. 2908

Phone EMerson 6-7269
Murray & Fowler Tire Co.

1007 Jefferson Ave.
REDWOOD CITY