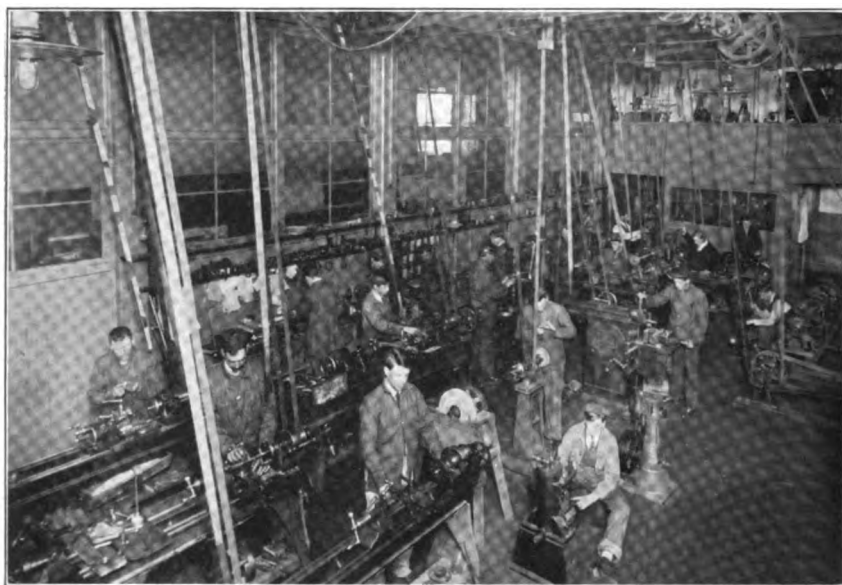


HEALD'S

School of Mines and Engineering

SAN FRANCISCO, CALIFORNIA



CIVIL, MINING, ELECTRICAL AUTOMOBILE, GAS AND STEAM ENGINEERING AND ASSAYING

These Departments have been established to accommodate students who wish university work in these lines in the **SHORTEST TIME POSSIBLE.**

It includes Geometry, Trigonometry, Draughting, Strength of Materials, Surveying, Assaying, Blowpipe Analysis, Mill Construction, Mining, Geology, Mineralogy, Dynamos, Motors, Measuring Instruments, Wiring Appliances, Wheatstone Bridges, Telegraphy (Morse and Wireless), Galvanic and Storage Batteries, etc., etc. Special catalogs for Engineering and Automobile work. **SEND FOR ONE.**

425 McALLISTER STREET
SAN FRANCISCO, CAL.

E. P. HEALD, PRESIDENT
H. E. COX, MANAGER