

INSURANCE - FIRE, LIFE OR ACCIDENT

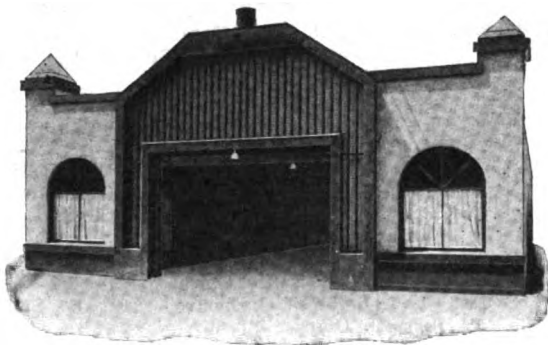
W. L. ATKINSON & CO., Real Estate Agents

28 East Santa Clara St.

SAN JOSE

Santa Clara County Directory—1911-1912.—Classified.

917



**Automobiles
Ranch & Lang
Electrics
Electric Garage
Auto Ignition
Storage Batteries
Repairing
Machine Work
and Renting
Autos for Hire
Headquarters for
Mt. Hamilton
Stage**

**323-327
S. First Street
PHONE S. J. 184
San Jose, Cal.**

Daggett R B & Co, 35 W San Antonio.

Garden City Auto Co (Inc), 230 E Santa Clara.

Gillespie Auto Co, 408 N 1st.

Hueter L H, 323 S 1st.

Hunter A B, 202 N 1st.

LETCHER GARAGE THE, 214-224 N 1st.

Luce & Jackson, 198 W Santa Clara.
NORMANDIN-CAMPEN CARRIAGE CO, 190-194 W Santa Clara and 12-18 Orchard.

Osen & Hunter (Inc), 202 N 1st.

Powell G E, 86 E San Fernando.

PUCK F H, 391 W Santa Clara (See adv).

REED CO, 323 S 1st, Phone S J 184 (See adv).

Smith Harrison P Inc, 1st ne cor San Carlos.

Wallace Bros, 205 N Market.

Wilson Alex & Co, 30 Locust.

Main & Preston, Los Gatos.

Krusich F J, Milpitas.

Boutell George, Morgan Hill.

Leach & Higdon, Mountain View.

Carah & Brown, Palo Alto.

Schenck & Walters, Palo Alto.

Sloan J E, Palo Alto.

Pait & Molitor, Santa Clara.

Sunnyvale Garage, Sunnyvale.

***AUTOMOBILES AND SUPPLIES.**

GARDEN CITY IMPLEMENT & VEHICLE CC, 190-200 S Market. (See right top lines).

PUCK F H, 391 W Santa Clara (See adv).

SAN JOSE IMPLEMENT CO, 83-91 S Market. (See left bottom lines).

VICTORY MOTOR CAR CO, 866-896 S 1st (See inside back cover).

***AWNINGS.**

(See also Tents and Awnings.)

BONAR E P CO, 378-380 S 1st. (See left top lines).

***BAD DEBTS COLLECTED.**

SAN JOSE MERCANTILE & COLLECTION AGENCY, 24 N 1st. (See back bone).

WILKINS A G, 24 N 2d. (See front cover and left top lines).

BAKERS AND CONFECTIONERS. (See also Confections.)

Alexander Jefferson, 335 N 1st.

Amburatore Joseph, s s Park av 2 w of Sunol.

Athenour A & Bros, 252 Post.

Bartoletti Apollinare, 87 N San Pedro.

Boston Bakery, 93 E Santa Clara.

Butterfly Baking Co, 18 E San Antonio.

Crocker F H, 303 S 6th.

Dellwig Erich, 186 S 2d.

Doerr's N Y Bakery Co, -68-170 S 1st, branches 216 S 1st, 247 E Santa Clara, 93 E Santa Clara.

Duff W A, 346 E Santa Clara.

Ennis Bros, 649 S 1st.

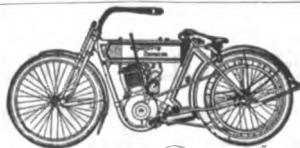
Ganshirt Leopold, Alum Rock av cor Monroe.

Powell Bros. Cyclery

Agents HAWLEY DAVIDSON MOTOR CYCLES

67 North Market St.
Phone S. J. 4613

San Jose, Cal.
Res. S. J. 9707P6



Digitized by Google

SAN JOSE

Printing
CO.

POWELL BROS
Cornell's
28
SOUTH FIRST STREET
AND
Ladies' Furnishings