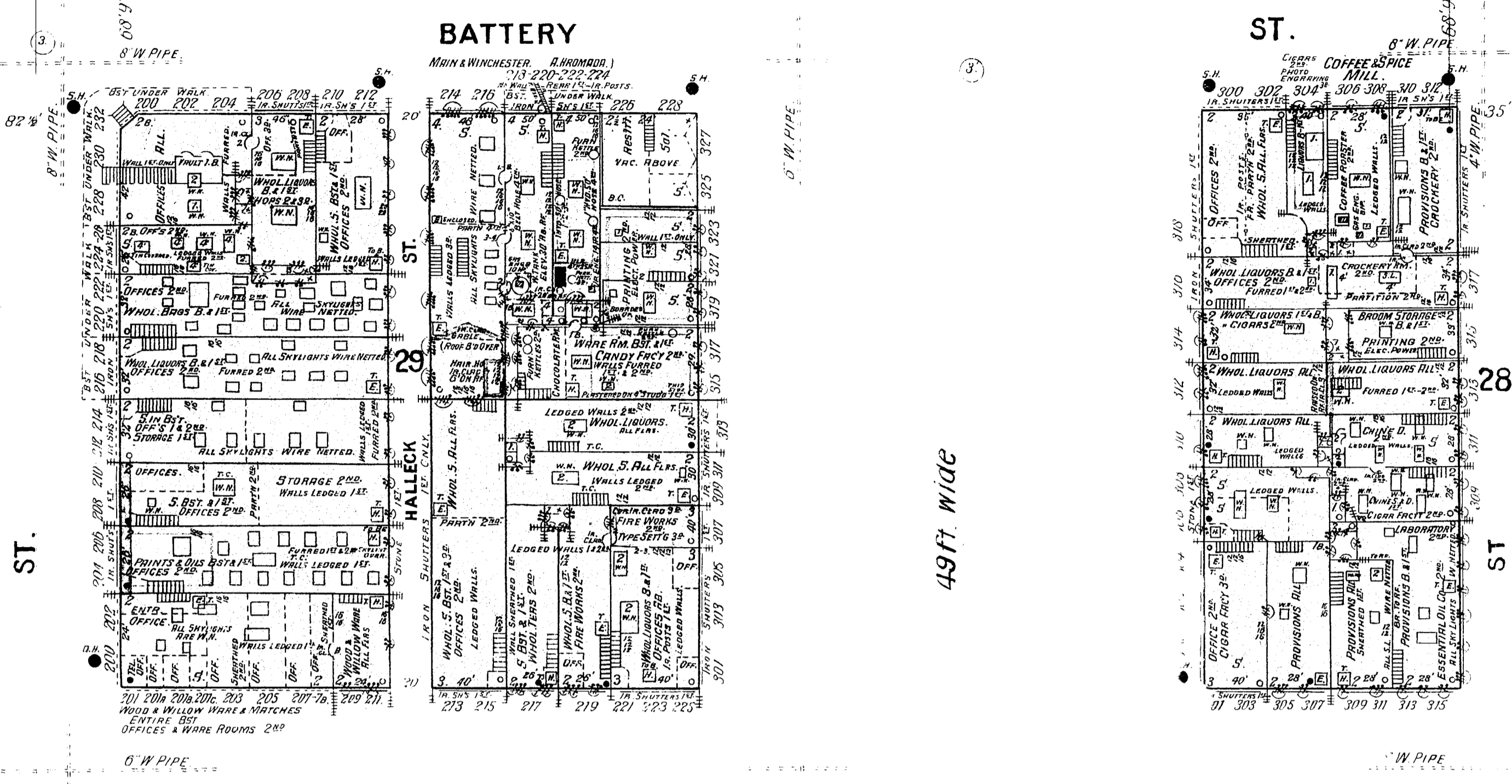


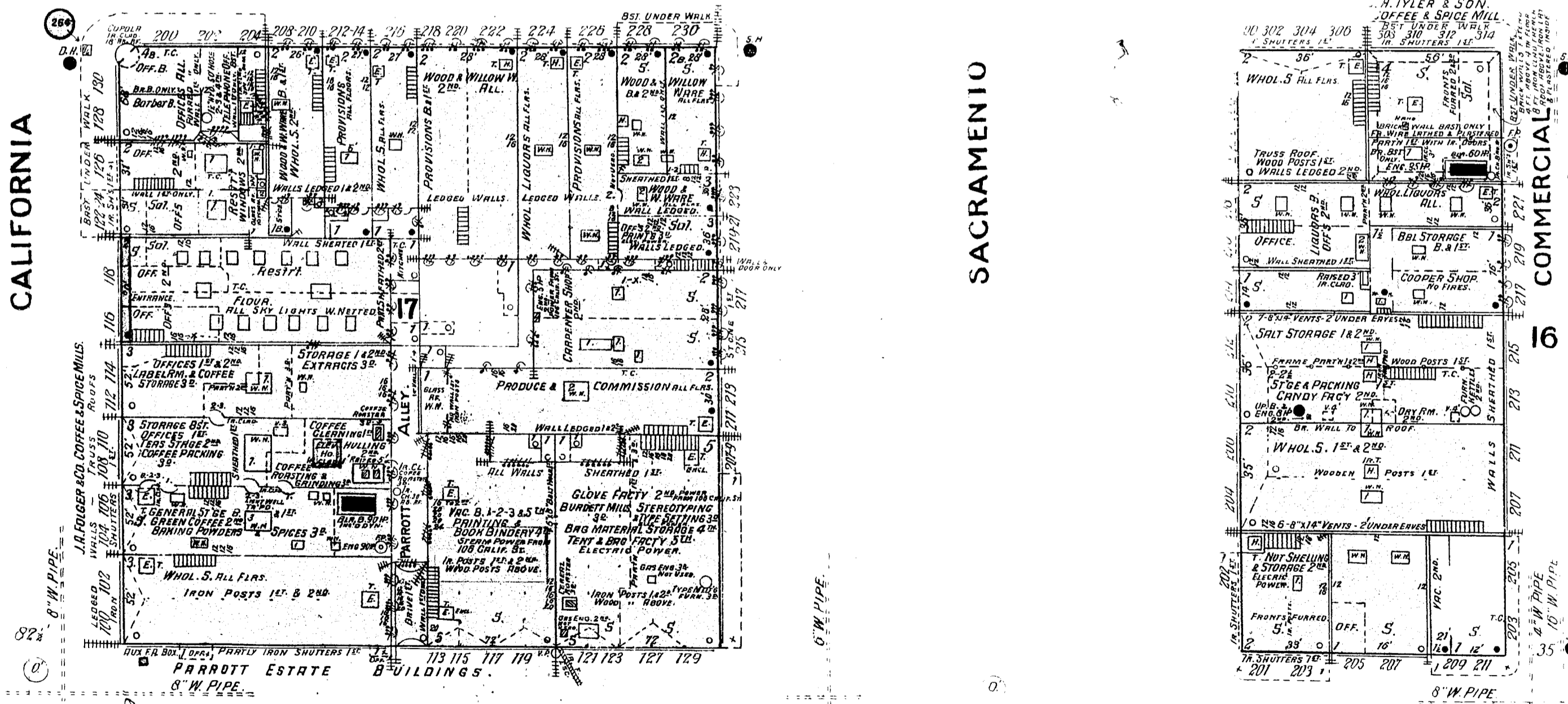
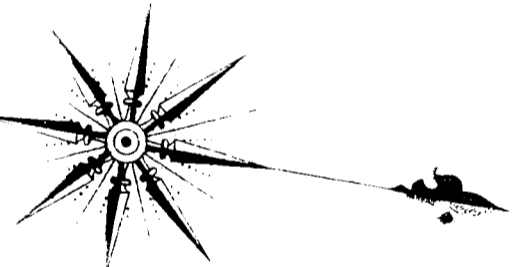
MAIN & WINCHESTER. A. FROMADA STEAM CANDY FACTY
 SADDLES & HARNESS & B.S.T. 1st & 2nd FLOORS
 SADDLERY 3rd & 4th FLOORS
 POWER-DRS ENGINE B.S.T. NO FIRE APPARATUS - DUL. F.R. BOXES.
 LEATHER W. RMS 1st & B.S.T. ROOMS 2nd & 3rd
 WHIP FACTY 4th - LASH FACTY 3rd
 POWER STEAM
 MYSRANT & SMALL HOSE EACH FLOOR.
 WHOL. CANDY STORE & W. ROOMS
 B.S.T. & 1st FLOOR
 CANDY MAKING & STEAM KETTLES
 2nd - 3rd & 4th FLOORS
 DRY ROOM & PAN ROOM 3rd
 CHEM. ROOM & DRY ROOM 4th

COFFEE & SPICE MILL.
 STORE & STORAGE B.S.T. 1st & 2nd
 COFFEE ROASTING - GRINDING.
 BAKING POWDER & SPICES 2nd



FRONT

38' 9" Wide



CALIFORNIA

SACRAMENTO

DAVIS

J. A. FOLGER & CO.
 POWER STEAM - FUEL OIL
 HEAT - STEAM - ELECTRIC LIGHTS
 ENGRAVING - CHEMICAL - FINE EDITIONS &
 S. A. BOX - J. A. FOLGER & CO. PRINTING
 ROOMS 3rd & 4th FLOORS
 IRON POSTS 1st & 2nd FLOORS

S. MITZER & SON.
 POWER STEAM - FUEL OIL
 HEAT - STEAM - ELECTRIC LIGHTS
 STORAGE - BUILDINGS - FURNACE - B.S.T.
 2nd & 3rd FLOORS
 IRON POSTS 1st & 2nd FLOORS

