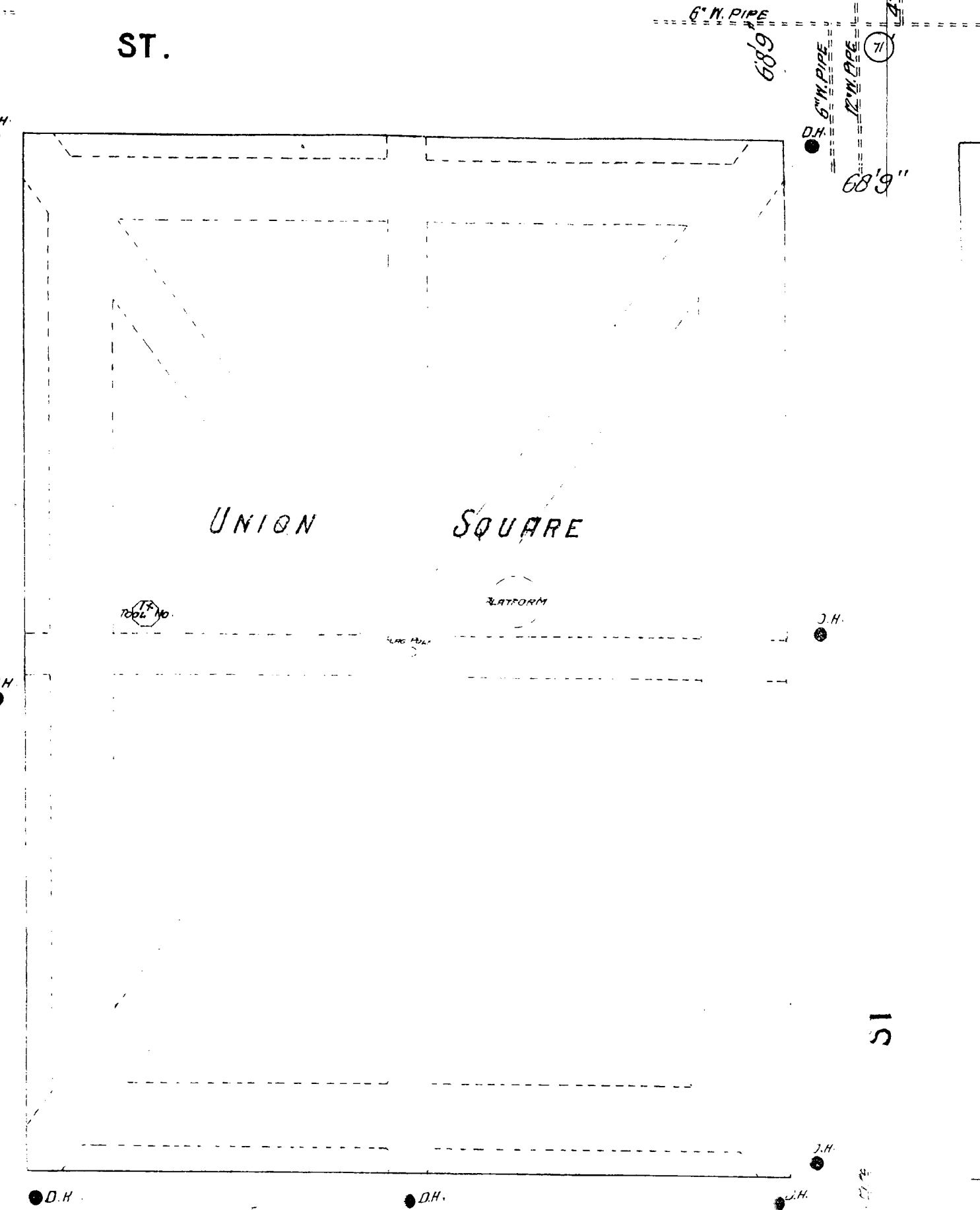
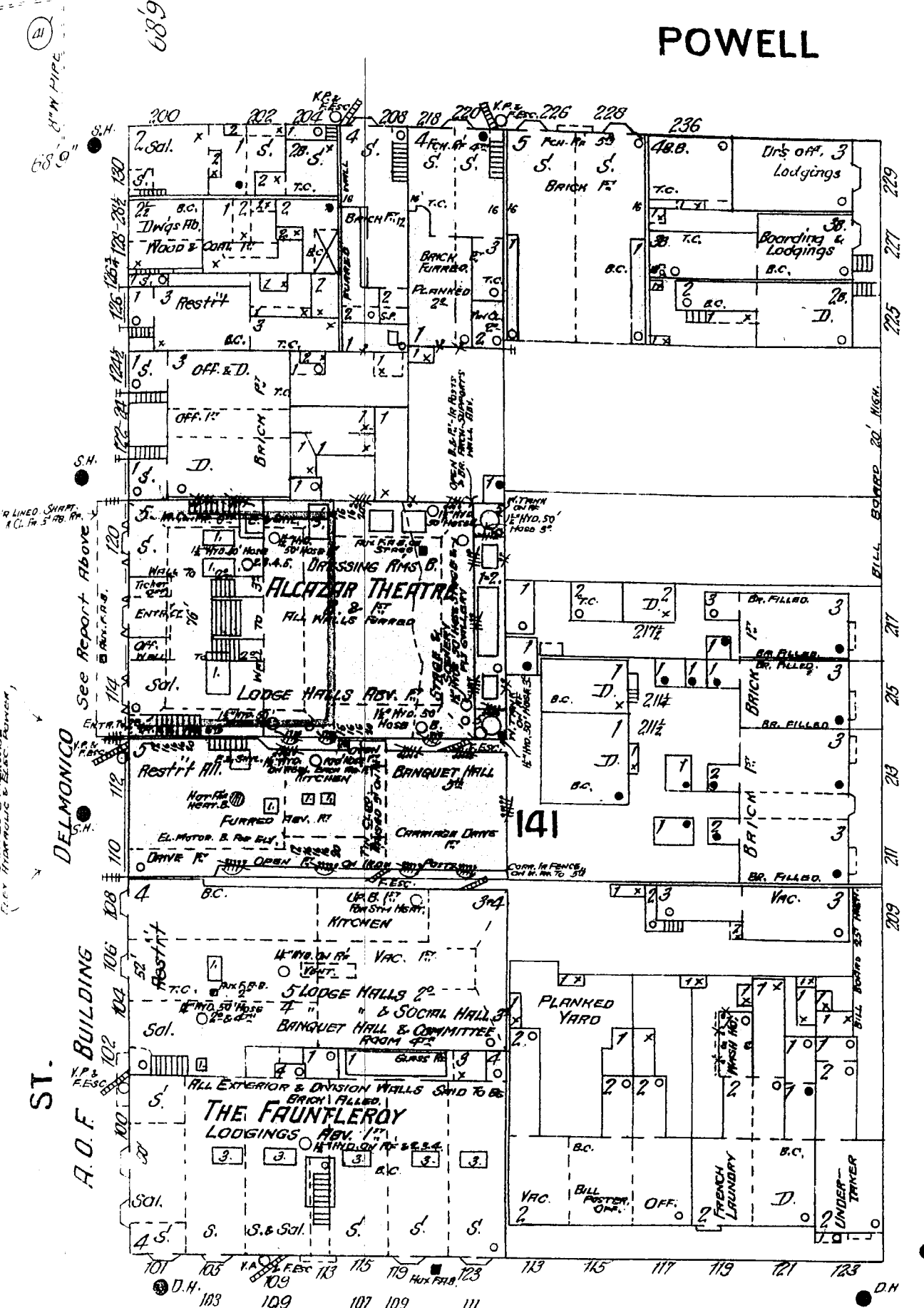


ALCOZAR Bldg
 THEATRE OCCUPIES REAR 10 ST. 2nd FL. LODGE HALLS, STAGE CHAMBER & SCENE PAINTING RM.
 3rd FL. 3 LODGE HALLS & SECY OFF. 4th FL. 8 LODGE HALLS - 3rd FL. ONE LODGE HALL & SOCIAL HALL.
 LIGHTS ELECTRIC & GAS - SPRINKLER SYSTEM OVER STAGE ONE RUK. F.A. & ON STAGE
 TWO 1 1/2" HOSE & 50' HOSE ON 8. UNDER STAGE & ON FLY GALLERY.
 FLOORS REY. THEATRE SUPPORTED BY IRON POSTS ON GRANITE BASES - WOODEN TRUSSES -
 NUMBER OF HYDRANTS & HOSE DISTD THRU OUT BLDG.

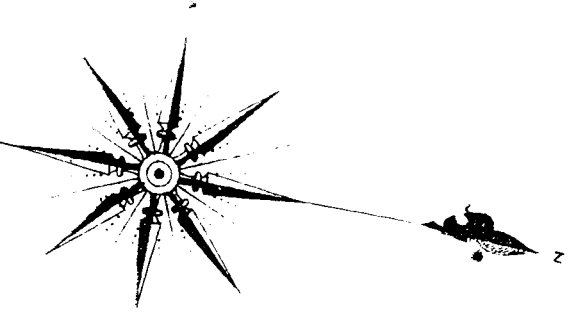
49

36



68'9" Wide

68'9" Wide

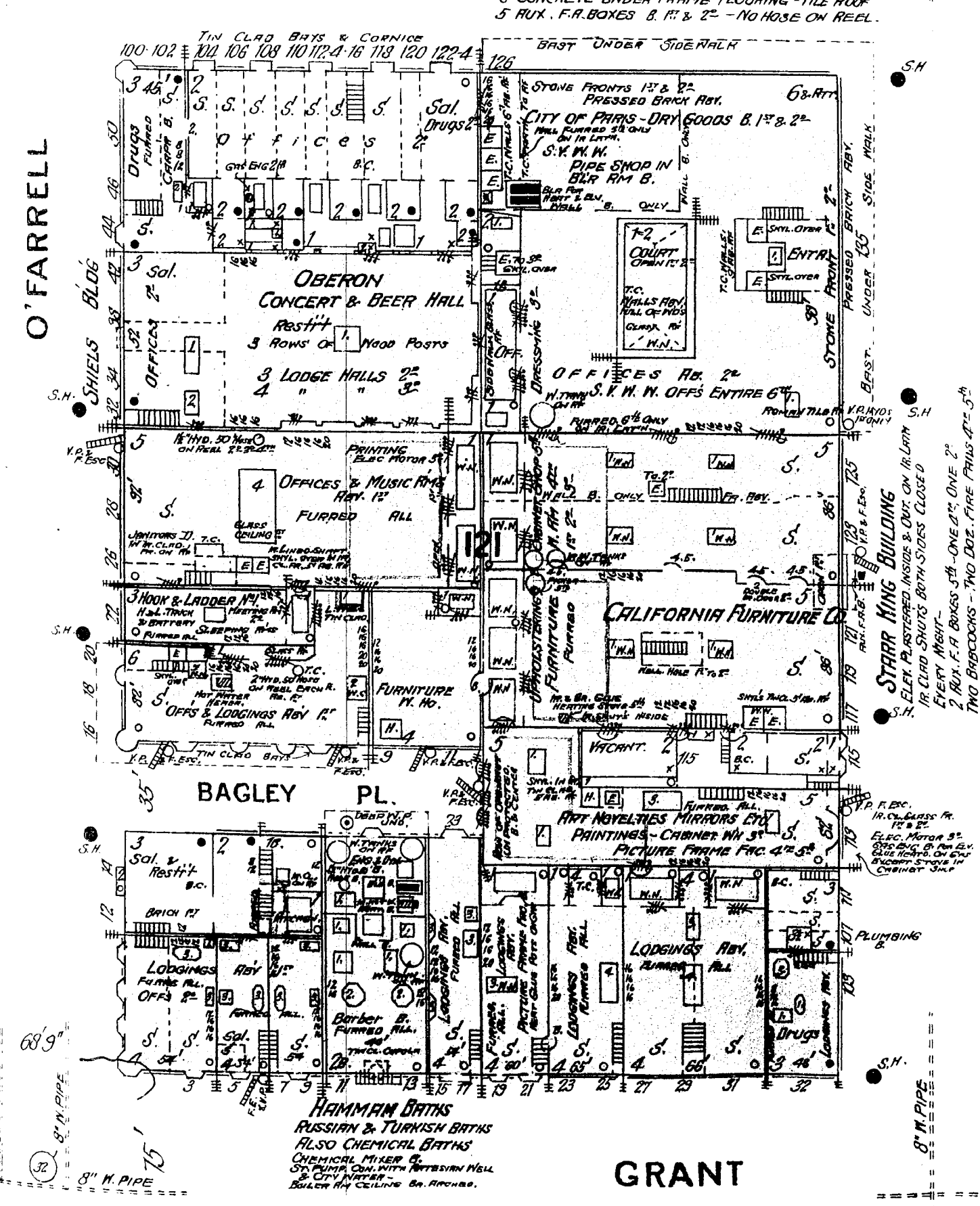


36

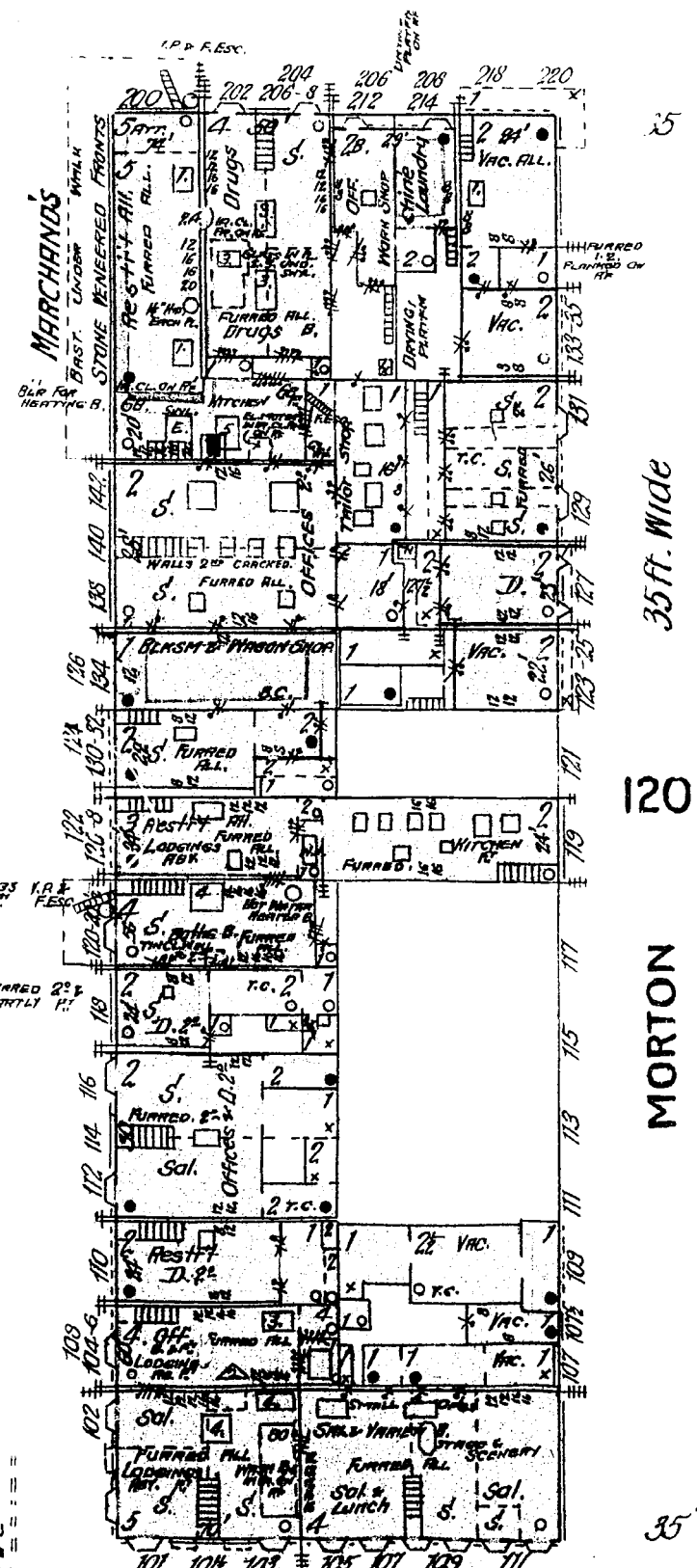
STOCKTON

37

SPRING VALLEY WATER Wks Bldg
 THREE MEN CLEAN BUILDING AT NIGHT
 STEEL POSTS & GIRDERS - TILE PARTING & CEILING
 6" CONCRETE UNDER FRAME FLOORING - TILE ROOF
 5" RUK. F.A. BOXES 8" x 12" 2" - NO HOSE ON REEL.



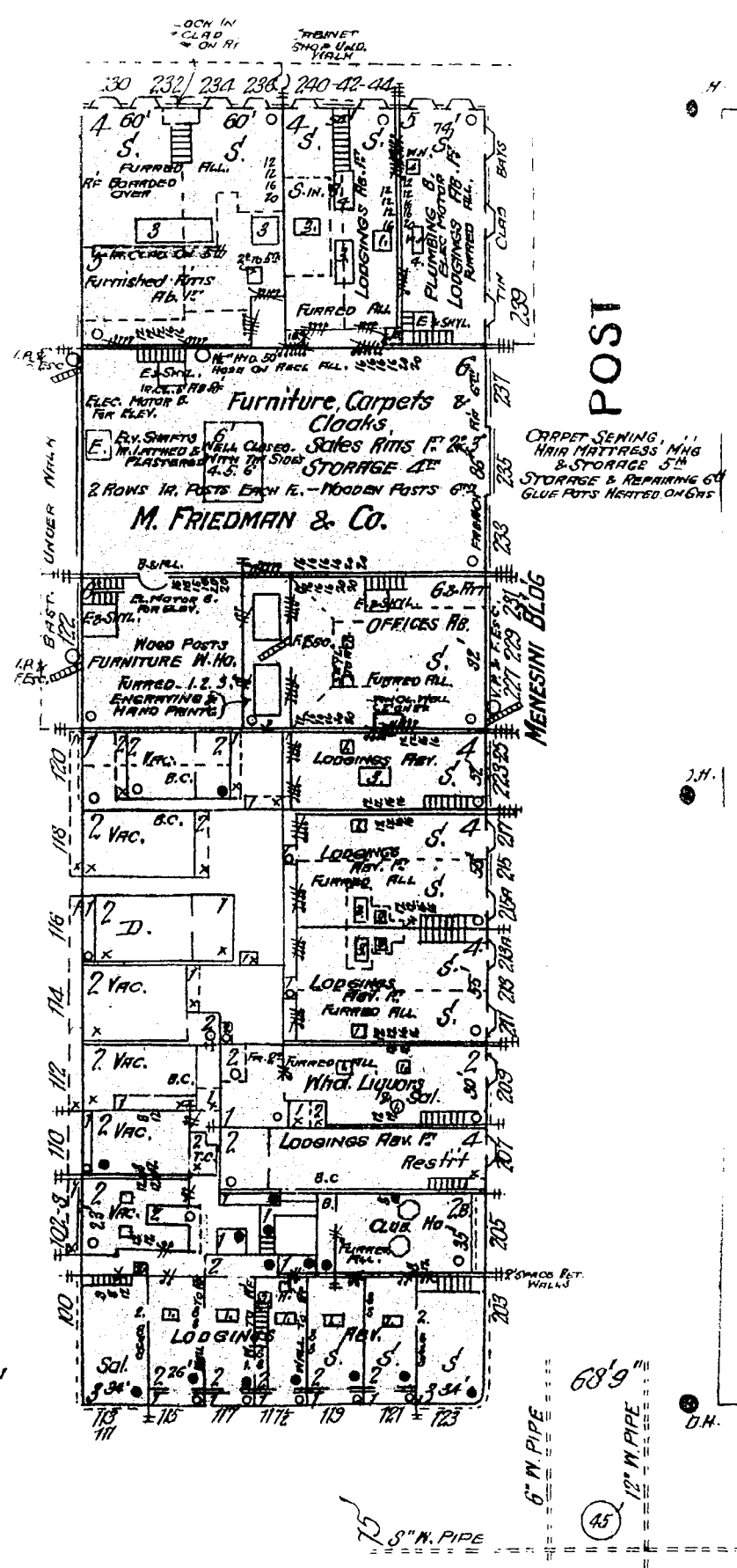
68'9"



35 ft. Wide

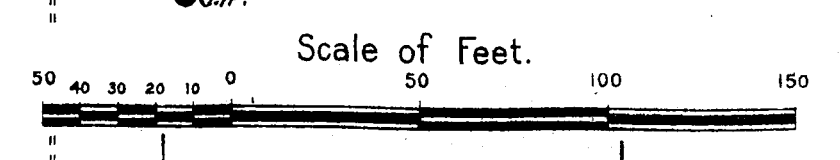
120

35'



68'9"

7



4/19/39