

59

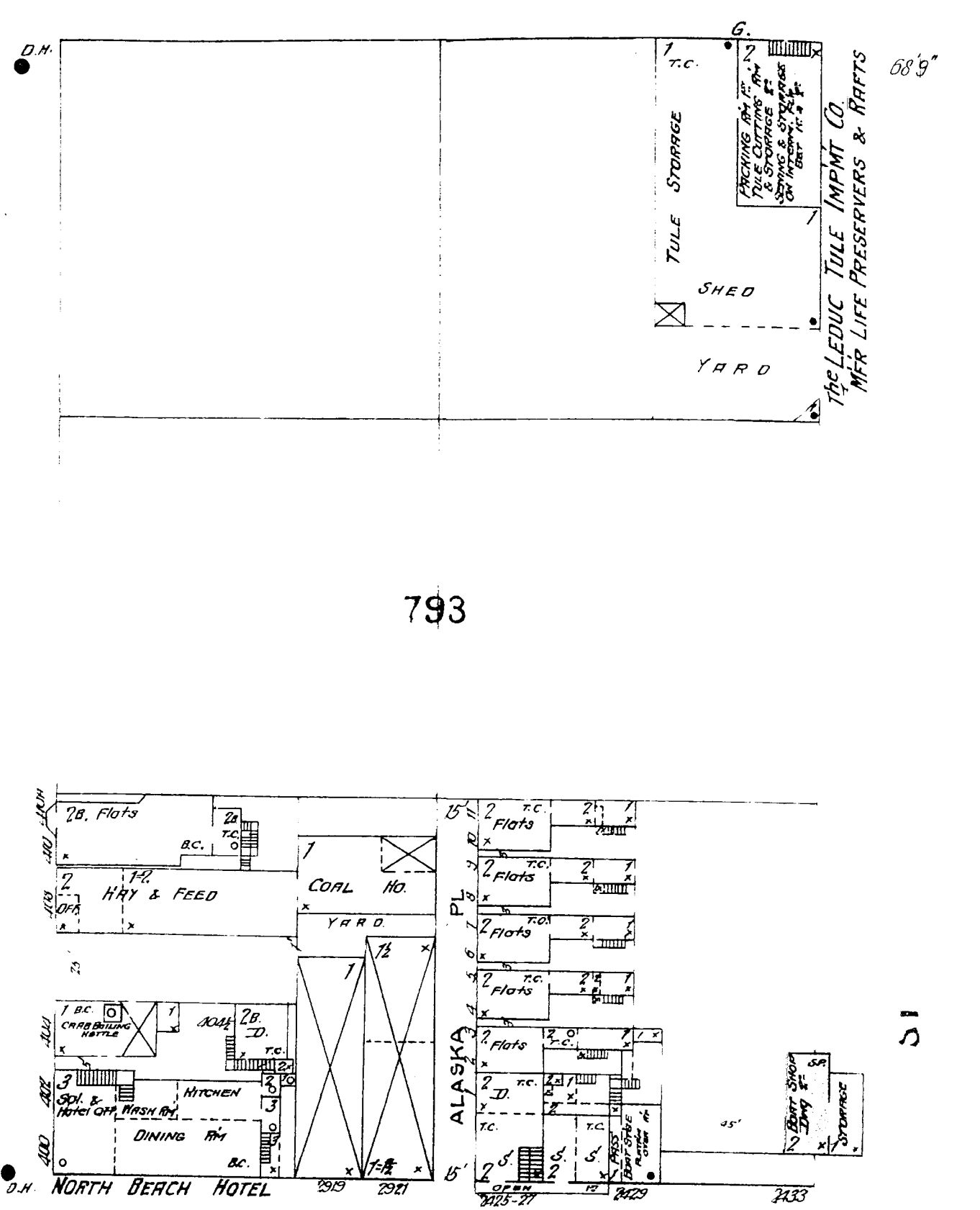
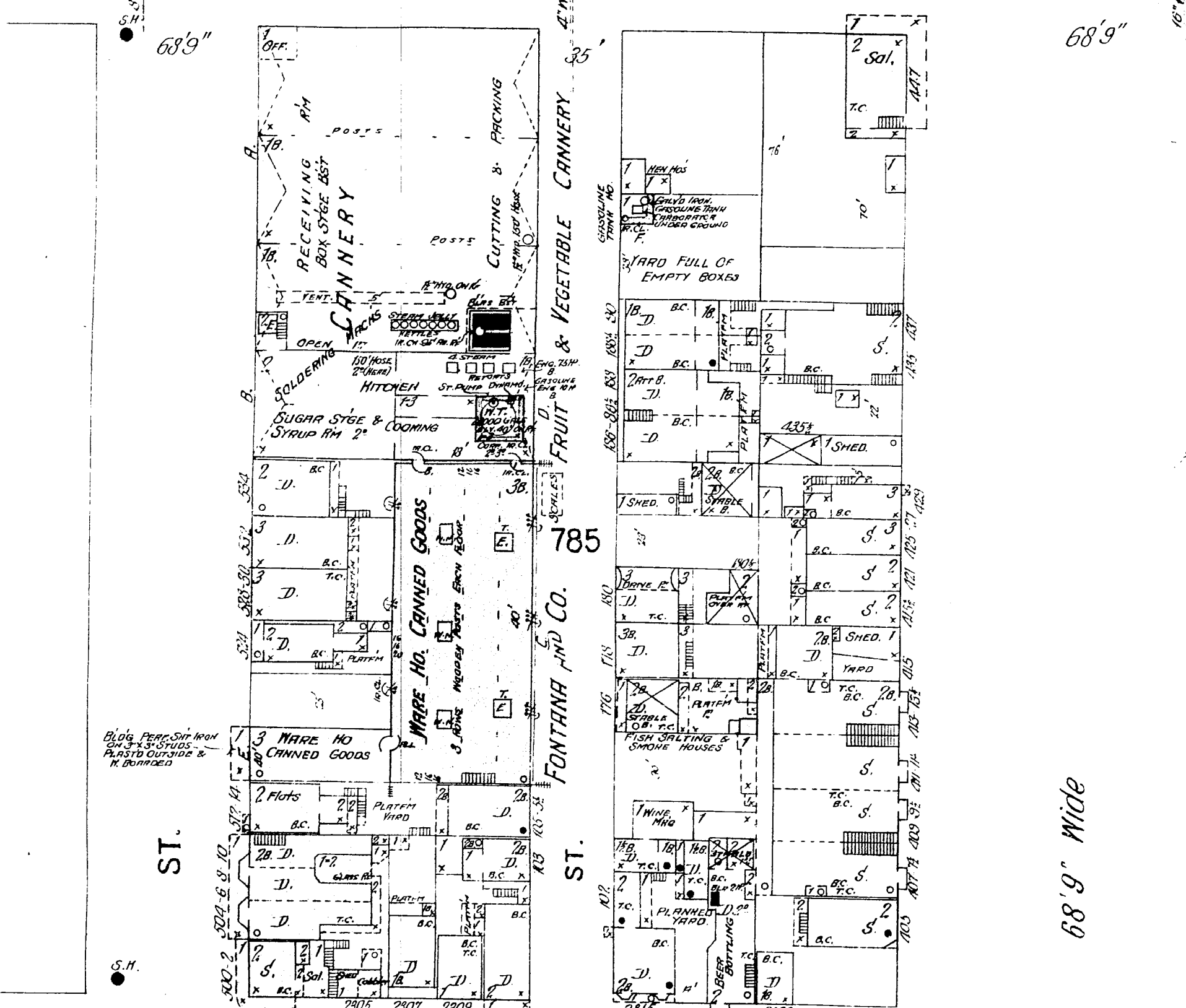
73

74

Bay of San Francisco

TAYLOR

ST.

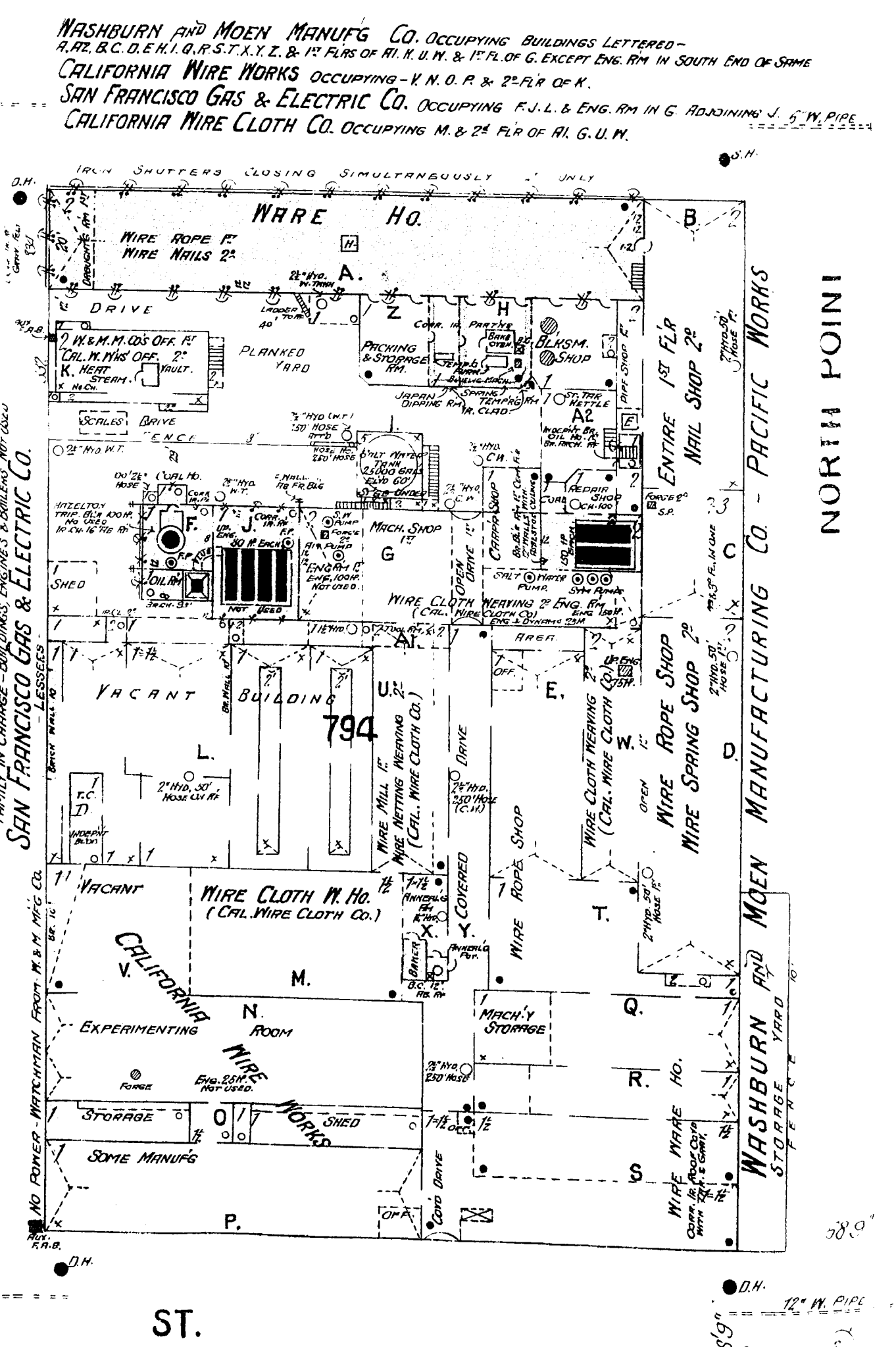
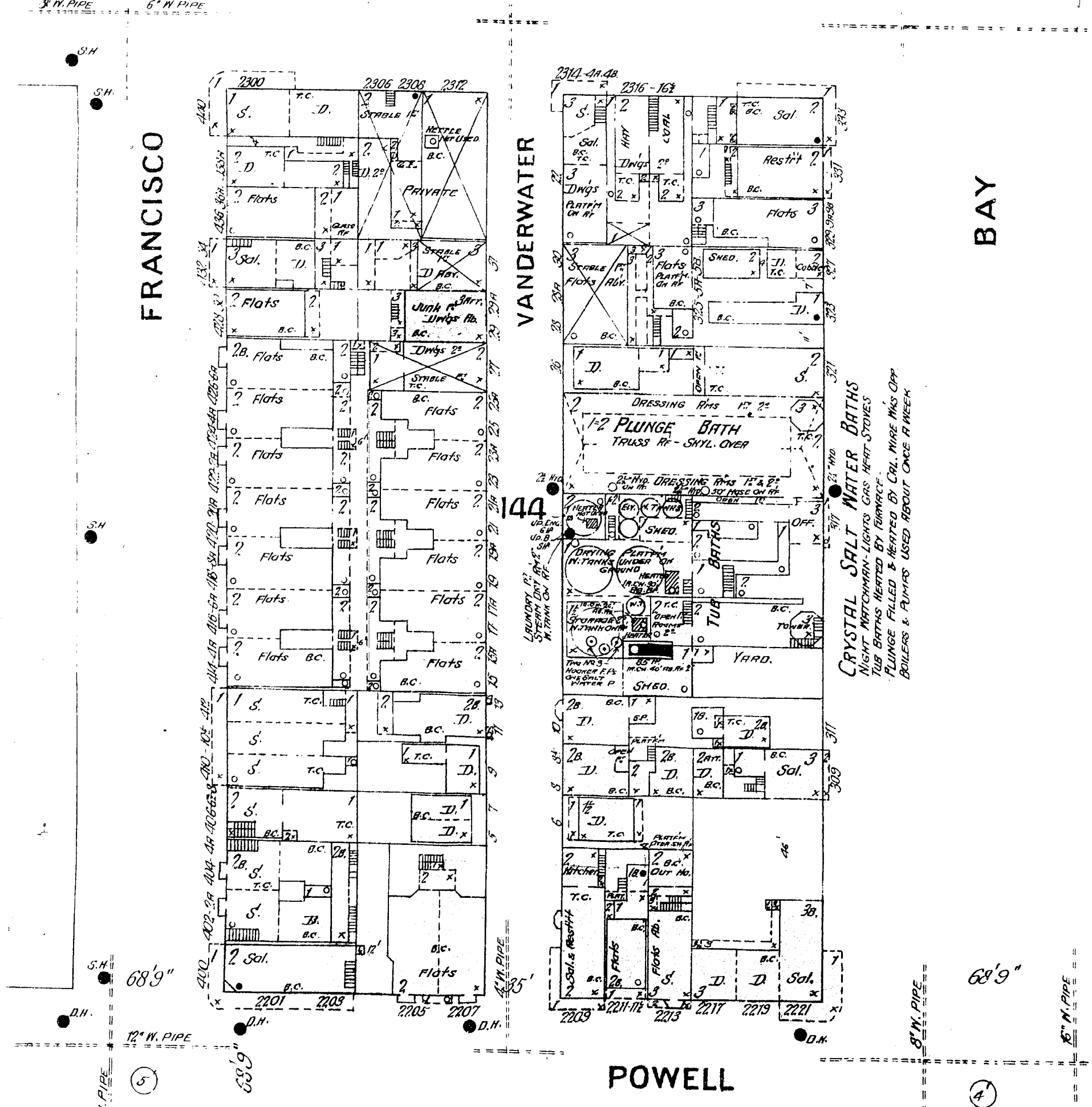


**FONTANA & CO. - CANNERY**  
 CANNING SIX MONTHS OF YEAR - REG. NIGHT & SUNDAY WATCHMAN ALL TIMES  
 POWER STEAM & GASOLINE LIGHTS ELECTRIC - RAIL IN CANNERY AND  
 INCANDE. & GAS IN WARE HO. FIVE RAIL P.R. BONES IN BUILDINGS  
 TWO 1 1/2" HOSES - 300' 1/2" HOSE AS SHOWN - ALSO SEVERAL HUNDRED FEET 3/4" HOSE  
 & HOSES IN CANNERY - 3 LINCOLN CHEM. FIRE PAILS EACH FLD OF BR. W. HO.  
 20000 GAL. WATER TANK FILLED BY DEEP WELL PUMP  
 SOLDERING MACHINES HEATED BY GASOLINE GAS FORCED BY AIR PUMP FROM GASOLINE TANK NO.  
 GASOLINE ENGINE USED ONLY TO RUN ELEVATOR - ALL BLDGS WHITEWASHED INSIDE.

58

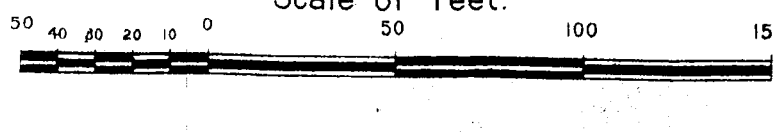
MASON

68'9" Wide



**WASHBURN AND MOEN MANUFACTURING CO. OCCUPYING BUILDINGS LETTERED -**  
 A, B, C, D, E, H, I, G, P, S, T, X, Y, Z, & 1<sup>ST</sup> FLR. OF G. EXCEPT ENG. RM. IN SOUTH END OF SAME  
**CALIFORNIA WIRE WORKS OCCUPYING -** K, N, O, P, & 2<sup>ND</sup> FLR. OF K.  
**SAN FRANCISCO GAS & ELECTRIC CO. OCCUPYING -** J, L, & ENG. RM. IN G. ADJOINING J. 1/2" W. PIPE  
**CALIFORNIA WIRE CLOTH CO. OCCUPYING -** M, & 2<sup>ND</sup> FLR. OF G, U, W.

Scale of Feet.



46

**WASHBURN & MOEN MFG. CO.**  
 TWO NIGHT & ONE SUNDAY WATCHMAN - CLOCK 7 STATIONS - HALF HOURLY ROUNDS  
 POWER STEAM - HEAT STEAM - FUEL COAL - LIGHTS GAS & ELECTRIC - 1 RAIL. F.R. BONES ON PREMISES  
 40 BALLS OF WATER WITH PAILS ON ROOFS - ALSO WALKS ON ROOFS WITH LADDERS TO SHINE  
 23 PERFECTION FIRE EXTINGUISHERS - SEVERAL CHEM. FIRE PAILS IN CONVENIENT PLACES.  
 HOSE & HOSE BOX SHOWN - FOUR 2 1/2" HOSES ALONG COVERED DRIVE WIRE CITY PRESSURE ONLY  
 OTHERS FROM SALT WATER TANK (2000 GALS) ELEV. 60' F. FILLED BY STEAM PUMP  
 THRO. 10" PIPE FROM BAY - BUILDINGS OLD & UNPAINTED.  
 CAL. WIRE CLOTH CO. - POWER & WATCHMAN FROM H.S. & M. MFG. CO.