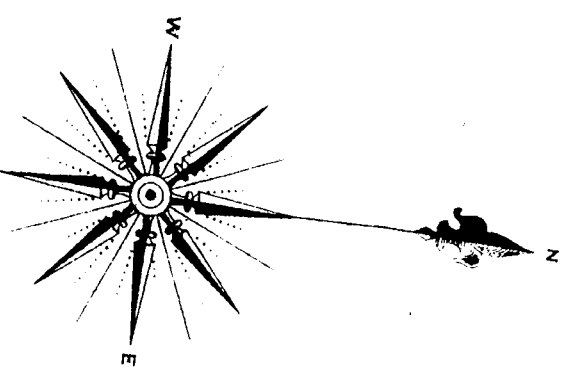
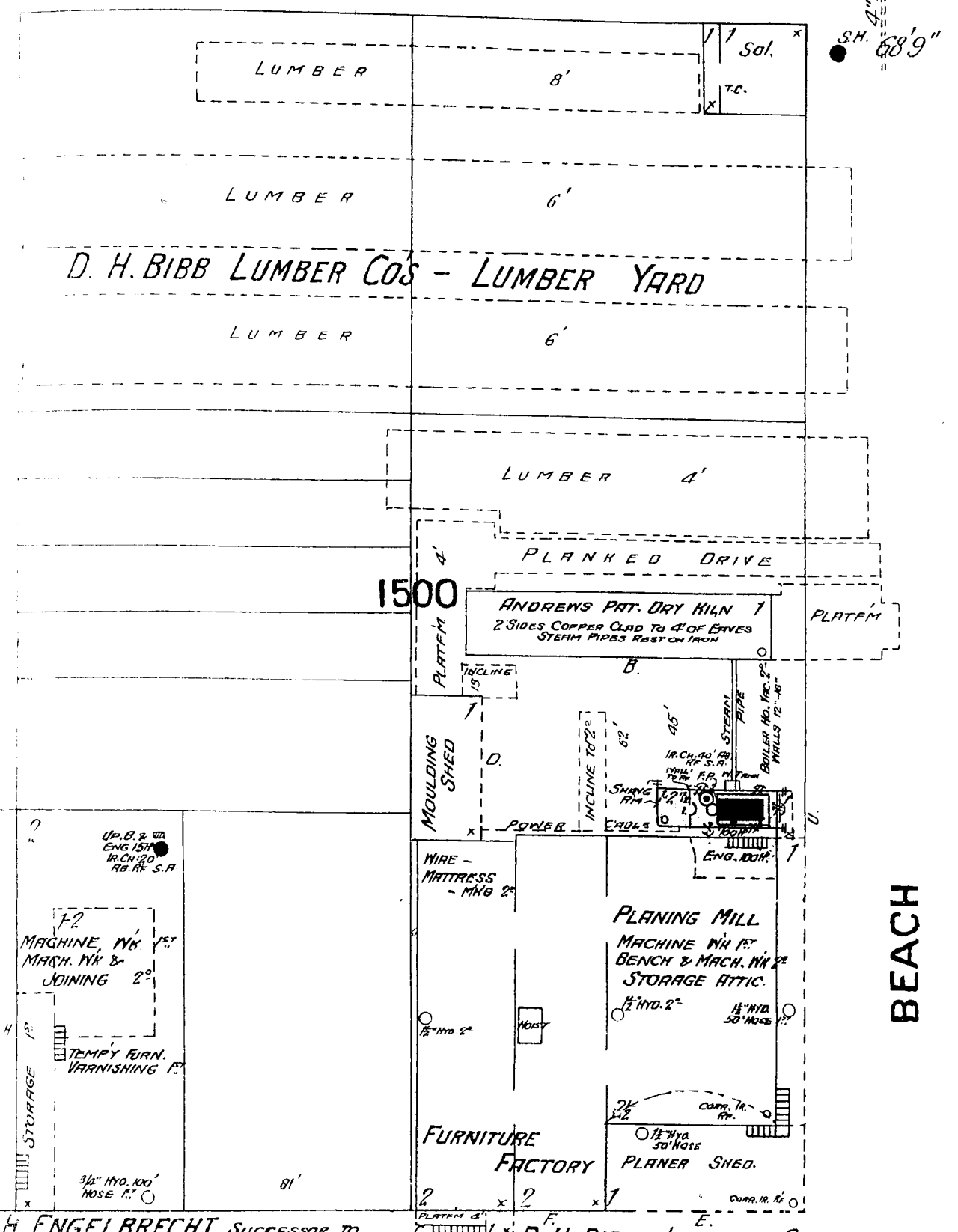


JEFFERSON ST.

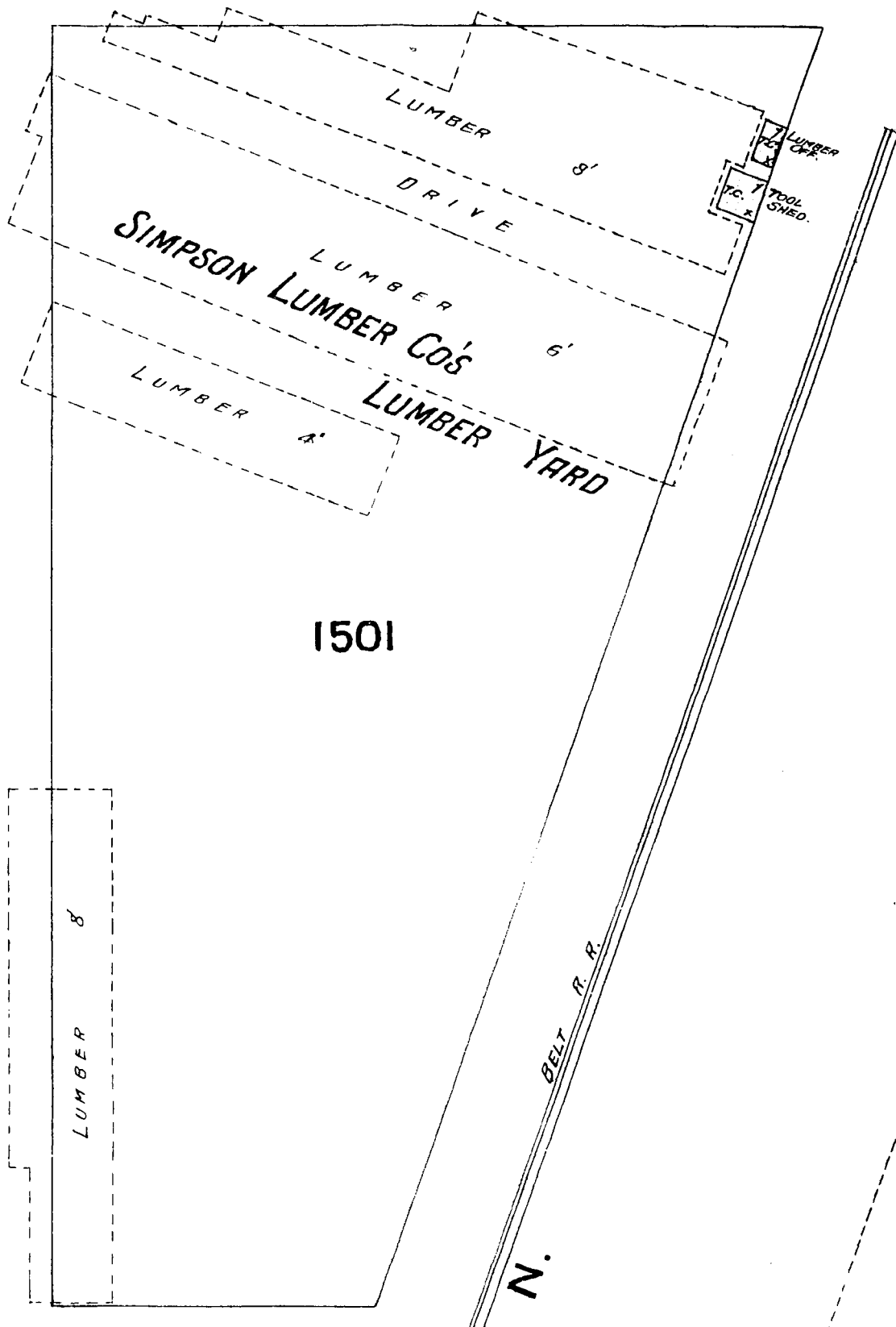


POWELL



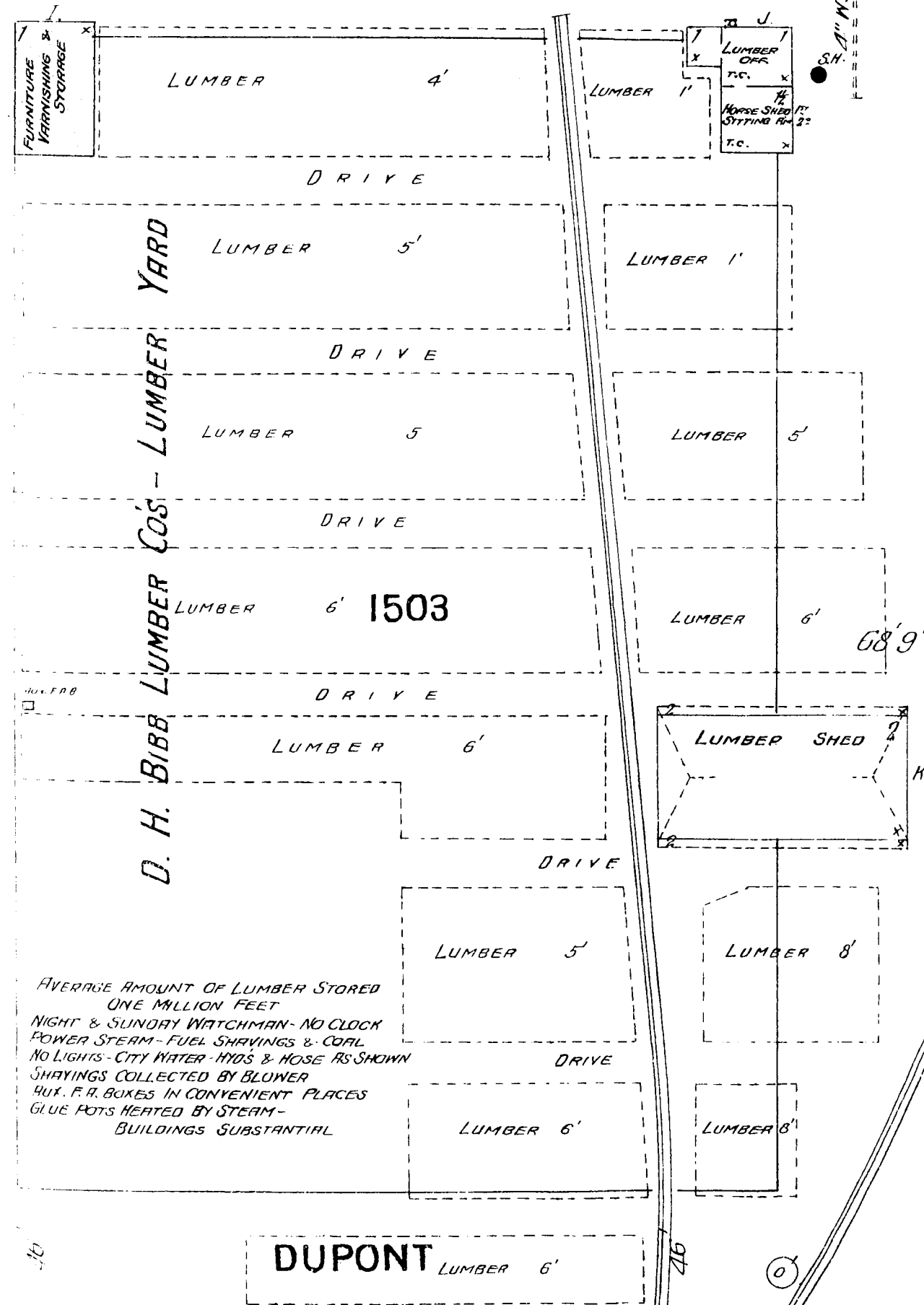
H. ENGELBRECHT Successor to
SAN FRANCISCO LAUNCH CO.
POWER STEAM - FUEL SHEDS - NO LIGHTS
WHITE WASHED INSIDE - TWO WATER BLS ON RT

D. H. BIBB LUMBER CO.



BEACH

NORTH POINT



AVERAGE AMOUNT OF LUMBER STORED
ONE MILLION FEET
NIGHT & SUNDAY WATCHMAN - NO CLOCK
POWER STEAM - FUEL SHEDS & COAL
NO LIGHTS - CITY WATER - HOSES & HOSE AS SHOWN
SHEDS COLLECTED BY BLOWER
MUT. P.O. BOXES IN CONVENIENT PLACES
GLUE POTS HEATED BY STEAM -
BUILDINGS SUBSTANTIAL.

1502

EAST ST.

GRAIN RECEIVING AND SHIPPING SHED
100' X 150' - 16' TO EAVES
THRESHOLDS ON WHARF CONNECTED WITH ST. CITY MAIN

Seawall Section I.

Bay of San Francisco

Seawall Section A

PIER No. 51
FORMERLY POWELL ST. WHARF

