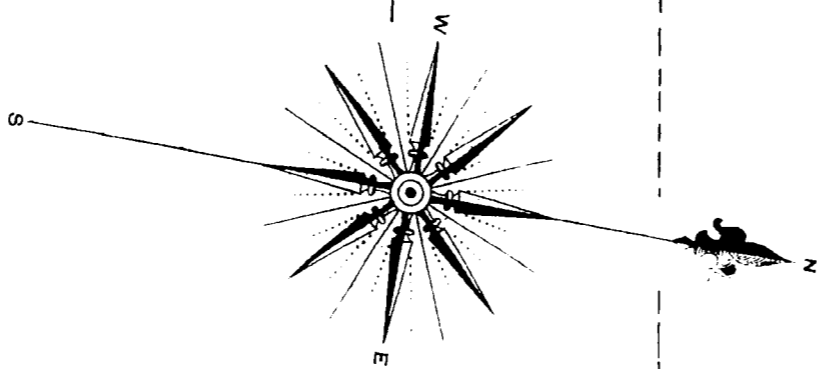


111

112



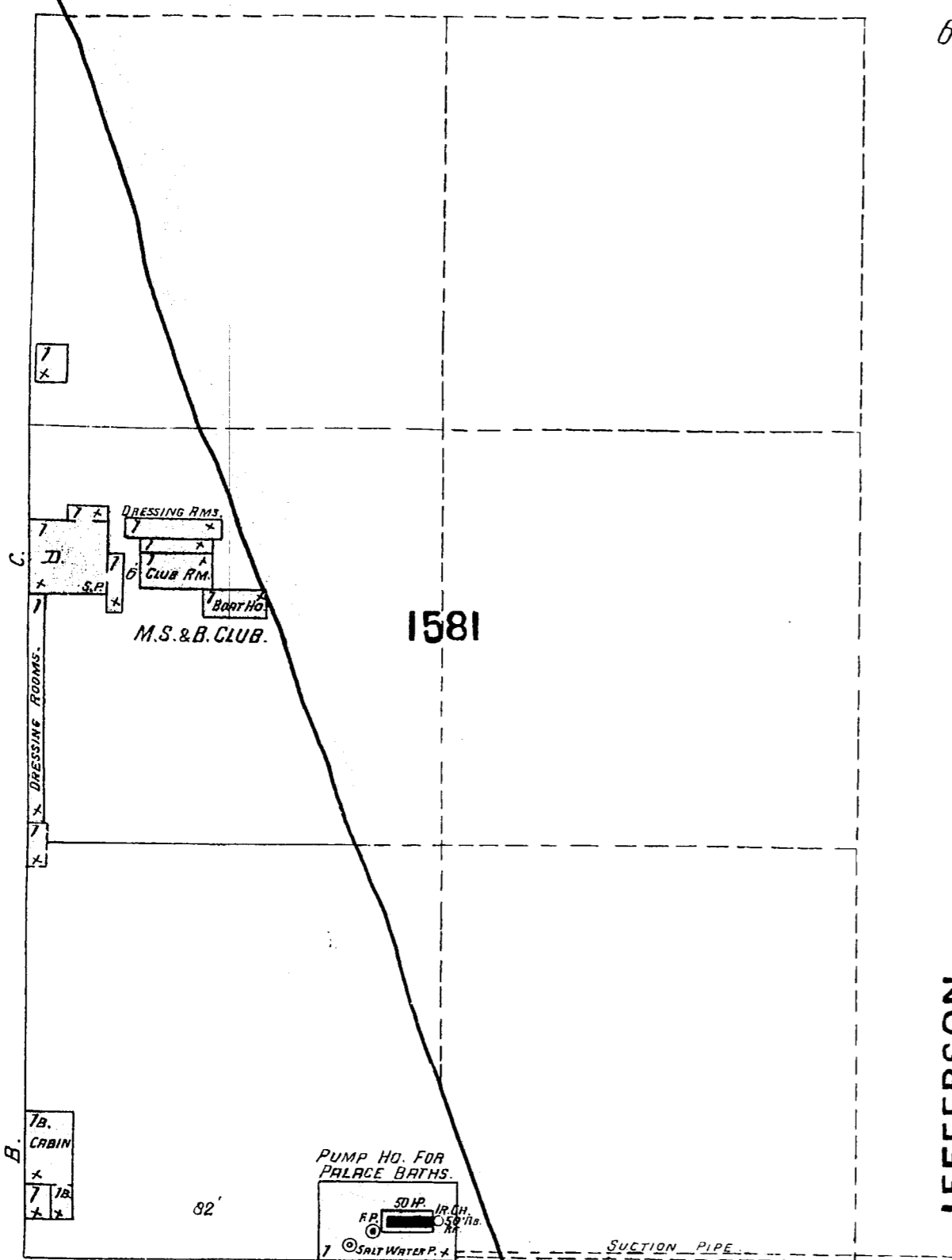
LARKIN

25

68'9"

68'9"

68'9"



1581

M.S. & B. CLUB.

2533

334

F r a n c i s c o

JEFFERSON

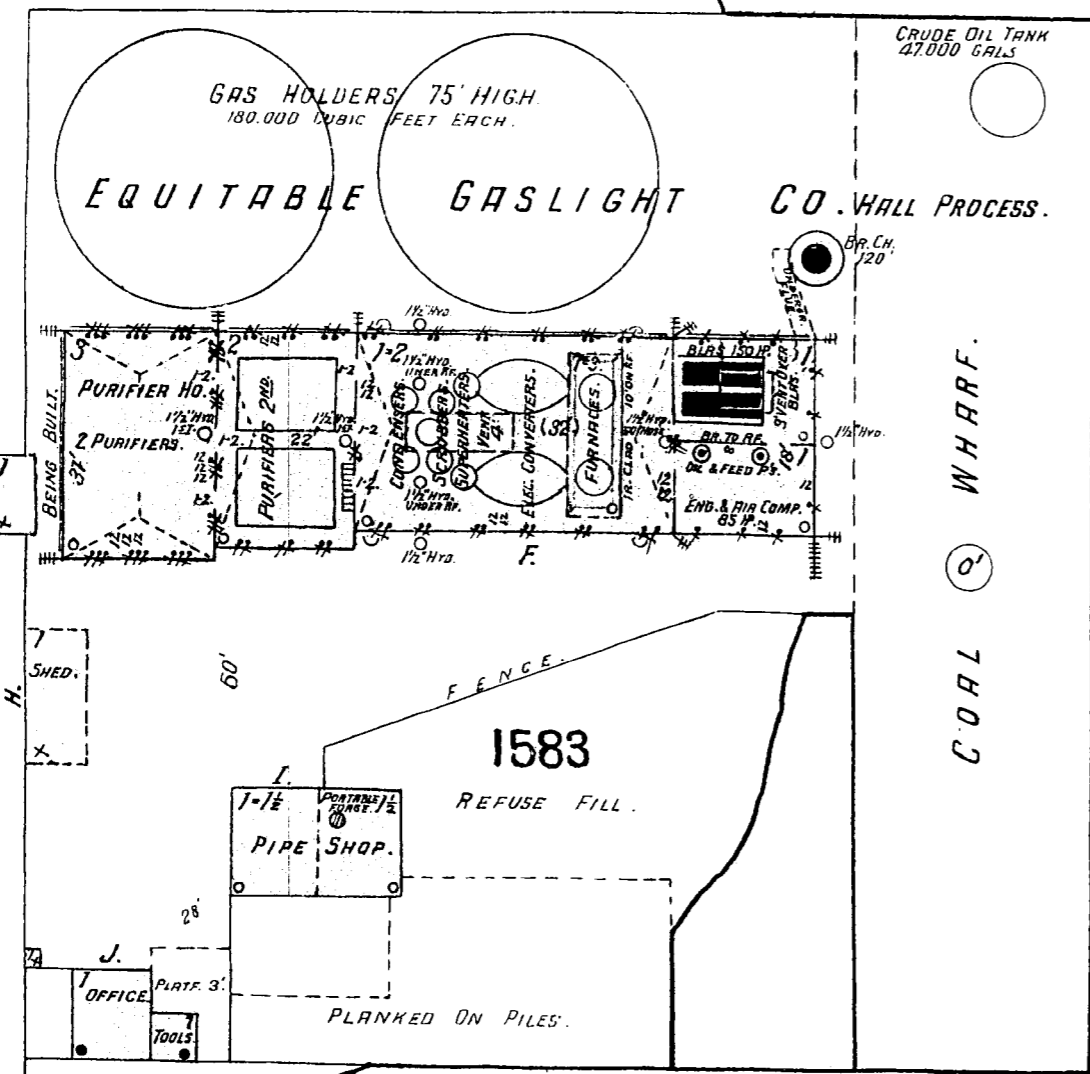
LONGUIN

88

24

68'9"

REGULAR DAY & NIGHT WATCHMAN - 7 MEN WORK EACH SHIFT. - FUEL COAL & OIL - LIGHTS GAS. POWER STEAM - CITY WATER - 1 1/2" HYDRANTS IN & AROUND BUILDING AS SHOWN. TO HAVE 50' HOSE AT EACH. TO HAVE STEAM SETS AROUND PURIFIERS & OIL TANK ON WHARF ALSO AUTOMATIC SPRINKLER UNDER MAIN ROOF.



GAS HOLDERS 75' HIGH 150,000 CUBIC FEET EACH.

EQUITABLE GASLIGHT CO. WALL PROCESS.

1583

PIPE SHOP.

PLANNED ON PILES.

COAL WHARF.

HYDE

B a y o f S a n

2535

1365

68'9"

LEAVENWORTH

MONTGOMERY AV.

12

68'9"

68'9"

68'9"

92

