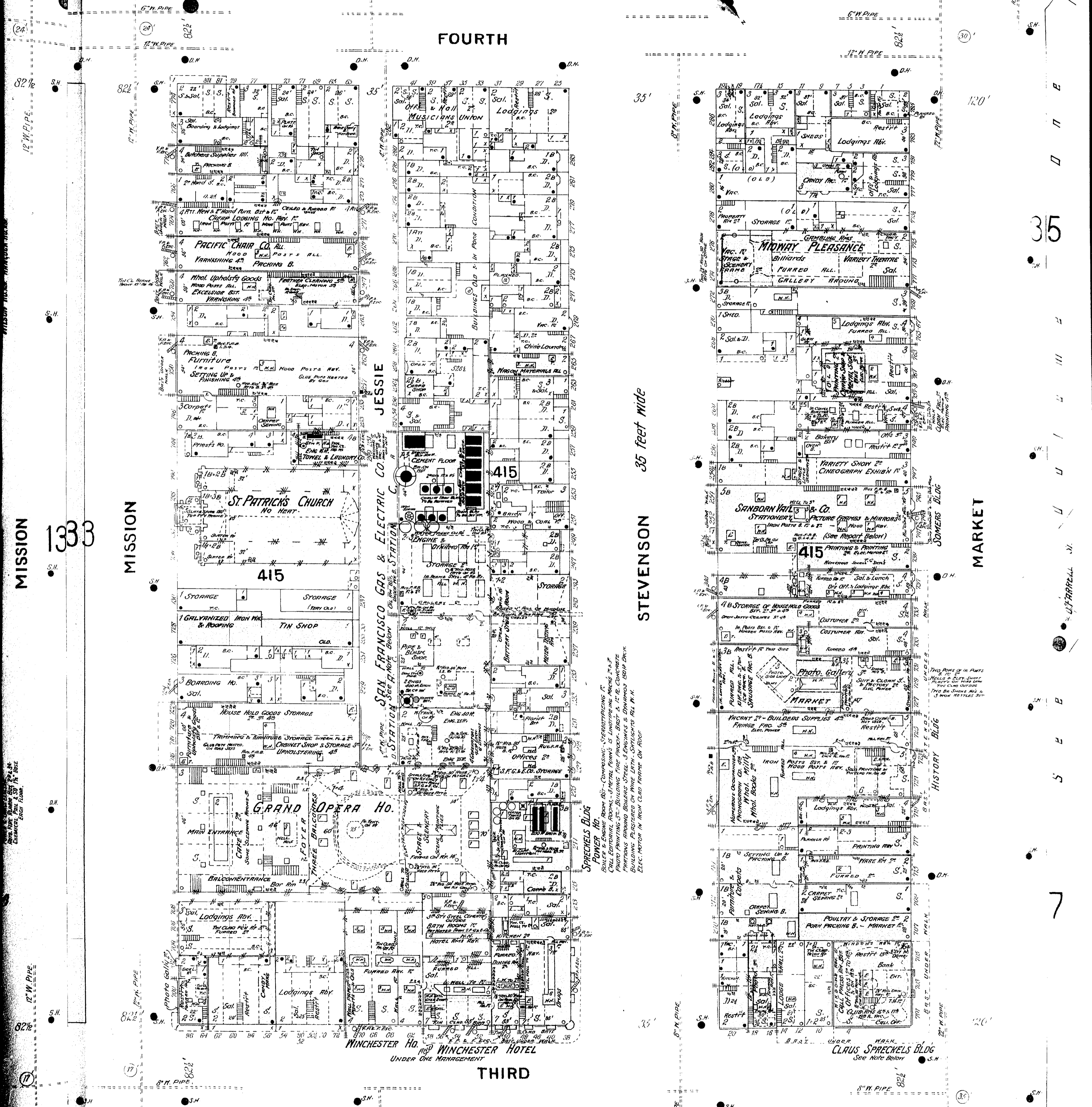


136

FOURTH

THIRD



MISSION

MISSION

STEVENSON

MARKET

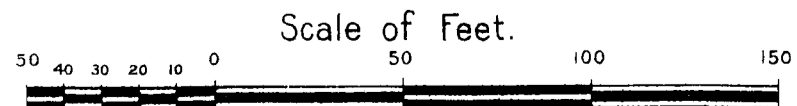
GRAND OPERA HO.
 LIGHTS ELECTRIC - FOUR 2" WIRE 50 WIRE EACH ON STAGE
 2" PERFORATED PIPE RIGID PROTECTUM ARCH FORMS
 WATER CURTAIN. NO FIRE AL. BOX IN BLDG.
 SIX 2" PIPES ROADS STAGE TIN CLAD ON STEEL FRAME
 FIRE CURTAIN

WINCHESTER HO. & HOTEL.
 BOTH UNDER ONE MANAGEMENT - ONE NIGHT WATCHMAN
 STEPHEN HEAT FROM S.F.G. & E. CO. - WINCHESTER HO. HEAT - OPEN GRATES

SAN FRANCISCO GAS & ELEC. CO.
 PLANT IN OPERATION DAY & NIGHT - POWER STEAM
 FUEL COAL - 4 RUX, F. R. BOXES - NUMBER MDS & ROSE REELS
 SKYLIGHTS OVER STATION C. ONE IN FRAME A' BOX R' ALL IN M.
 STATION A - ROAD POSTS & GIRDERS OPEN JOISTS CEILING
 STATION C - IRON POSTS STEEL GIRDERS & ROOF CONSTR'N
 FLOORS SLOW BURNING CONSTRUCTION -
 MACHINERY IN ENGINE & DYNAMO RM OF STATION C.
 5" TND 200 HLD. ENGS & DYNAMOS 15"
 2" 100"
 TWO BLAKE AIR PUMPS TWO ELEC. MOTORS 22"

INDEPENDENT STEEL FRAME CONSTRUCTION
 STEEL POSTS & GIRDERS - TERRA COTTA PARTITIONS
 12" UNDER CONCRETE FLOORS TO 8" IN. UNDER CONCRETE
 ARCHED FLOORS ABOVE - WALLS OF BRICK & STONE
 VENEERED ABOVE 5' - WEST & SOUTH WALLS AVERAGE 18"
 SECURED TO STEEL FRAME
 HEIGHT TO CORNICE 105' - TO LANTERN ON CUPOLA 315'
 STAND PIPE WITH 2" 110" EACH FL. - ALSO 12" 110" 50 NOSE
 ON EACH FL. FLR
 LIGHTS ELECTRIC - HEAT STEAM FROM POWER HO - 211 STEVENSON ST.

SANBORN YAIL & CO. 741-5 MARKET ST.
 NIGHT WATCHMAN & CLOTH - HOURLY ROUNDS - STEAM FROM S.F.G. & E. CO.
 LIBERAL SUPPLY OF WATER BUS & PIPES EACH FLR EXGRS 1ST - 4th FLR
 GLUE POTS HEATED ON STEAM PIPES -
 BIST - PACKING - ONE SHIP OPERATED BY ELEC. MOTOR - 22". PICTURES
 3rd FLR - WARE ROOM - 4th PRINTING & STORAGE (ELEC. POWER)
 5th FRAME MAKING & GLDING



KEARNEY ST.