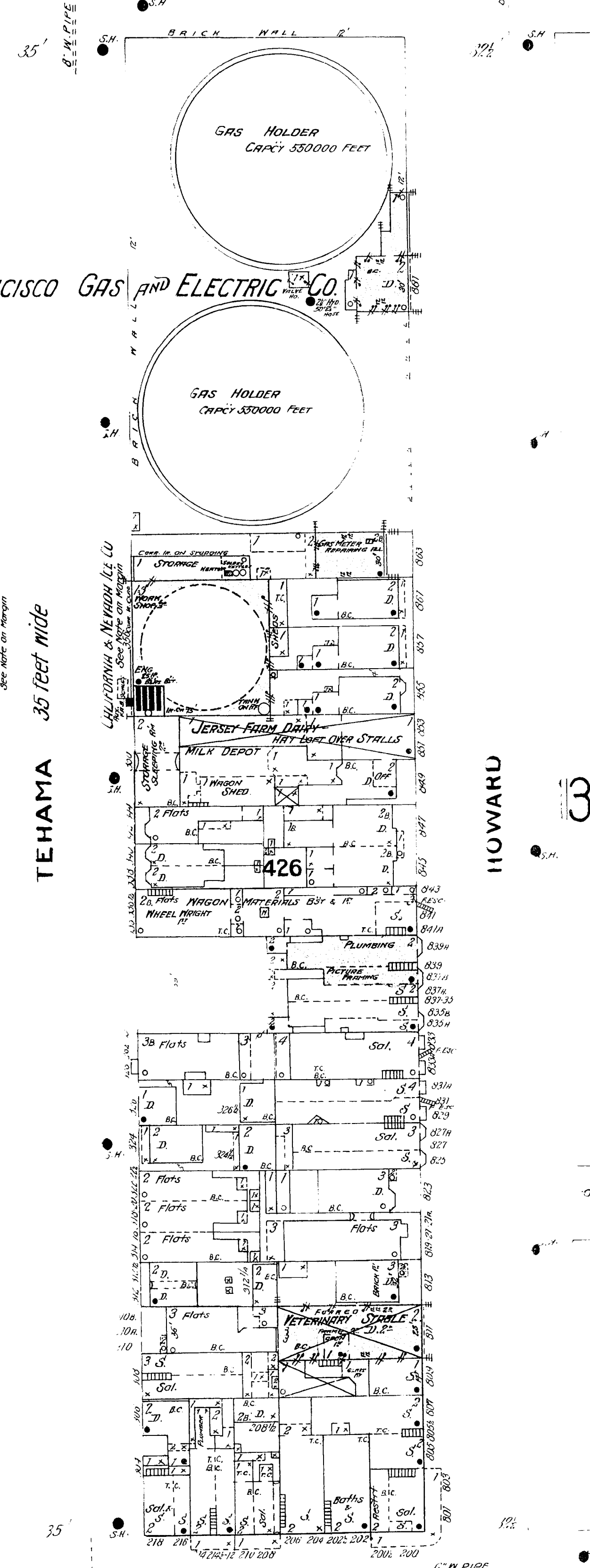
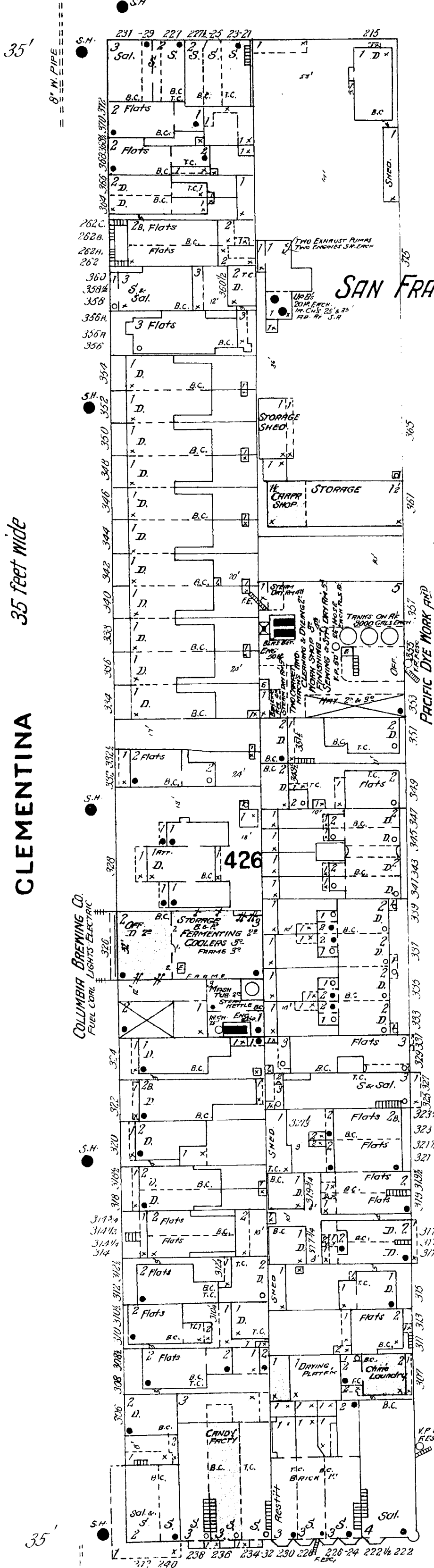
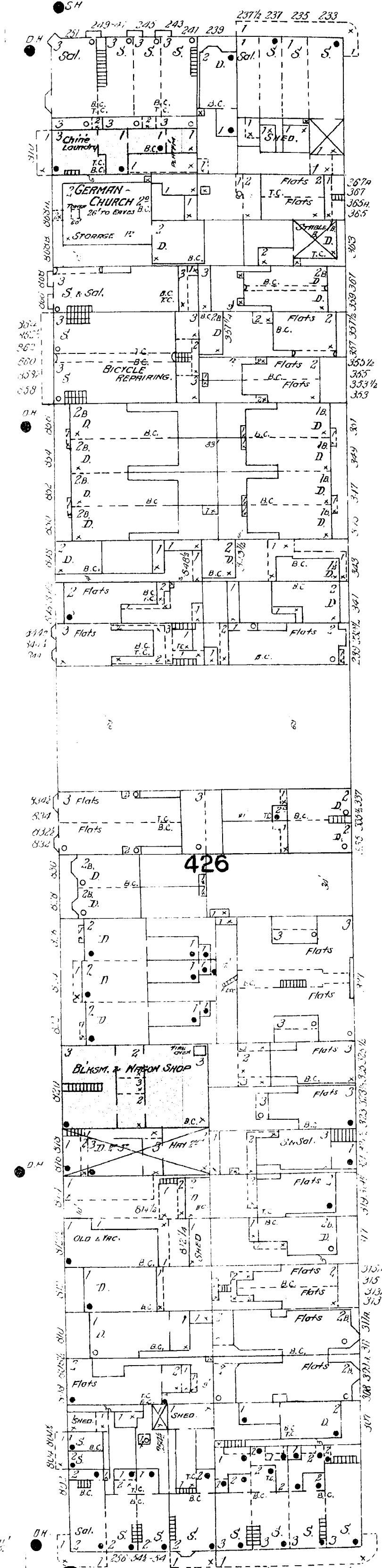


162

FIFTH



1659

FOLSOM

426

CLEMENTINA 35 feet wide

426

TEHAMA 35 feet wide

HOWARD

35

FOURTH

PACIFIC DYE WORKS ETC.
POWER STEAM - FUEL COAL - LIGHTS GAS
CITY & MELL WATER - HOSE AS SHOWN
ONE CHEM. FIRE EXTER. 2" & 4 1/2"
IRONS HEATED BY GAS -
BENZINE RM 4th - IRON LINED WITH
CONCRETE FLOORS

CALIFORNIA & NEVADA ICE CO.
6" BRICK WALLS AROUND 12" FRAME WITH AIR SPACE
INDEPENDENT LATTICE FRAME 30" ABOVE ROOF
CONTAINING COILS OF IRON PIPES
CONDENSER & ABSORBER ALWAYS MET

158

