

169

EIGHTH

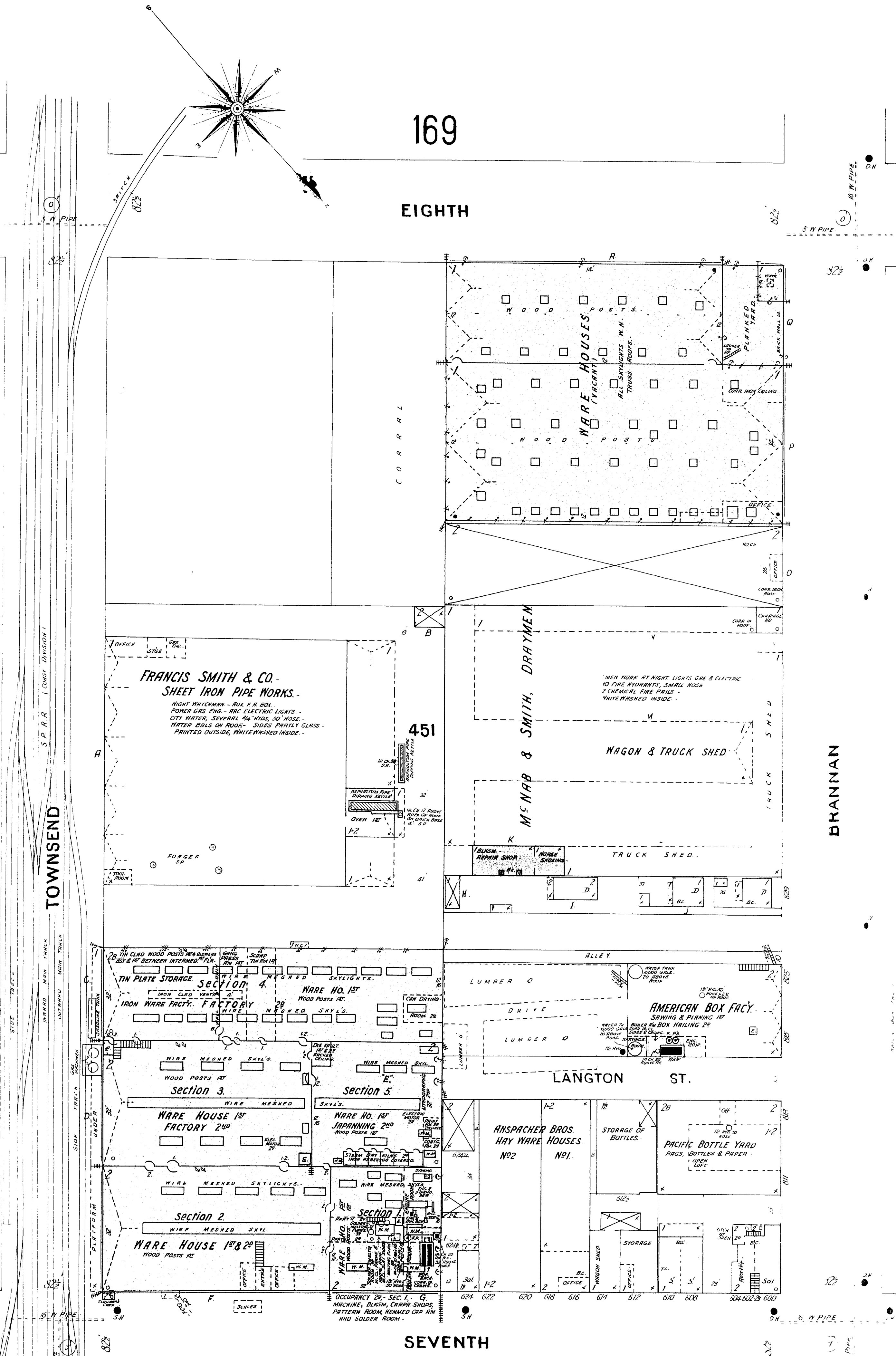
211

189

MAN ST.

TOWNSEND

BRANNAN



FRANCIS SMITH & CO. SHEET IRON PIPE WORKS.

NIGHT WATCHMAN - RUL. F. H. BDL. POWER GAS ENG. - ARC ELECTRIC LIGHTS. CITY WATER, SEVERAL 1/4\"/>

WATER BULBS ON ROOF. SIDES PARTLY GLASS. PRINTED OUTSIDE, WHITEWASHED INSIDE.

TIN PLATE STORAGE SECTION 4. IRON WARE FACTORY. WARE HOUSE 1ST FACTORY 2ND.

SECTION 3. SECTION 5. SECTION 2. SECTION 1.

WARE HOUSE 1ST. WARE HOUSE 1ST & 2ND.

WARE HOUSE 1ST. WARE HOUSE 1ST.

WARE HOUSE 1ST. WARE HOUSE 1ST.

WARE HOUSE 1ST. WARE HOUSE 1ST.

WARE HOUSE 1ST. WARE HOUSE 1ST.

WARE HOUSE 1ST. WARE HOUSE 1ST.

WARE HOUSE 1ST. WARE HOUSE 1ST.

WARE HOUSE 1ST. WARE HOUSE 1ST.

WARE HOUSE 1ST. WARE HOUSE 1ST.

WARE HOUSE 1ST. WARE HOUSE 1ST.

WARE HOUSE 1ST. WARE HOUSE 1ST.

WARE HOUSE 1ST. WARE HOUSE 1ST.

WARE HOUSE 1ST. WARE HOUSE 1ST.

WARE HOUSE 1ST. WARE HOUSE 1ST.

WARE HOUSE 1ST. WARE HOUSE 1ST.

WARE HOUSE 1ST. WARE HOUSE 1ST.

WARE HOUSE 1ST. WARE HOUSE 1ST.

WARE HOUSE 1ST. WARE HOUSE 1ST.

SEVENTH

PACIFIC SHEET METAL WORKS.

REGULAR NIGHT & SUNDAY WATCHMAN AND CLOCK WITH 11 STATIONS, 6 ROUNDS PER NIGHT. RUN DAY AND NIGHT ABOUT 3 MONTHS IN YEAR. - ONE MAN WORKS IN JAPANNING ROOM ALL NIGHT. POWER STEAM AND ELECTRIC. - FUEL COIL. - LIGHTS ELECTRIC. - 12 FIRE EXTINGUISHERS. CITY WATER, 1 1/2\"/>

197

Scale of Feet

