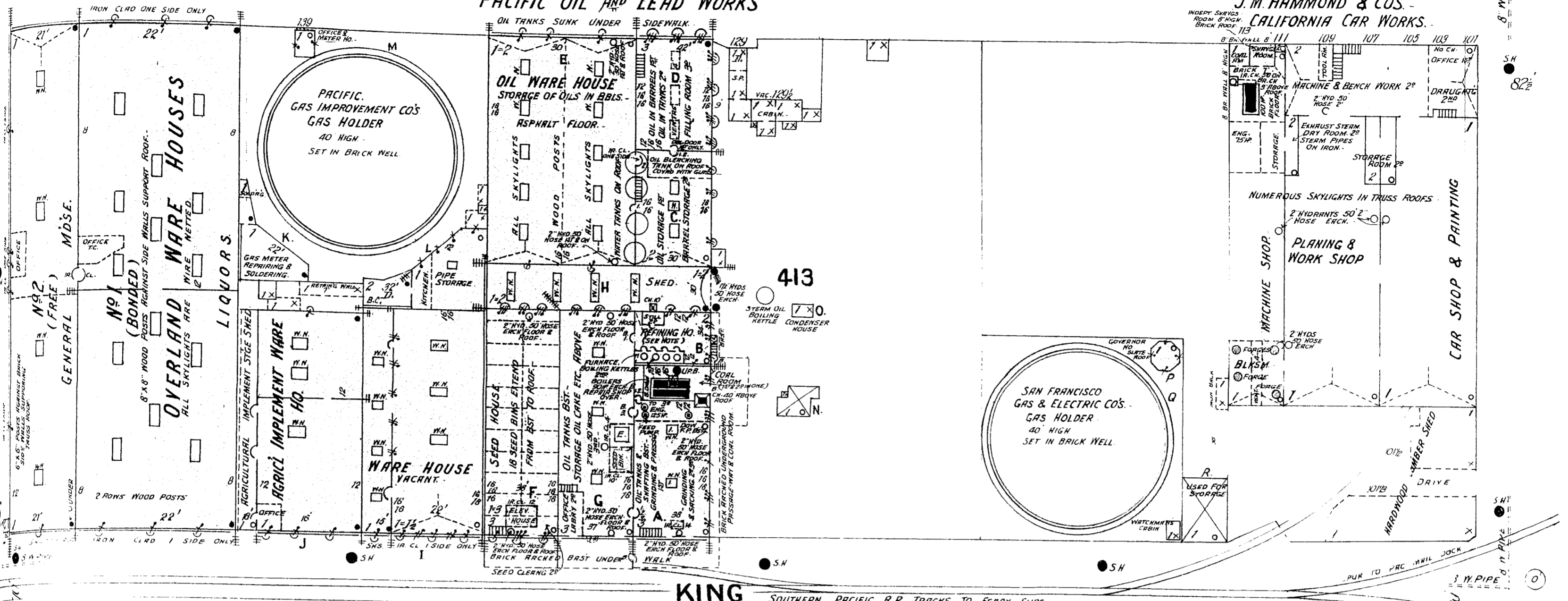


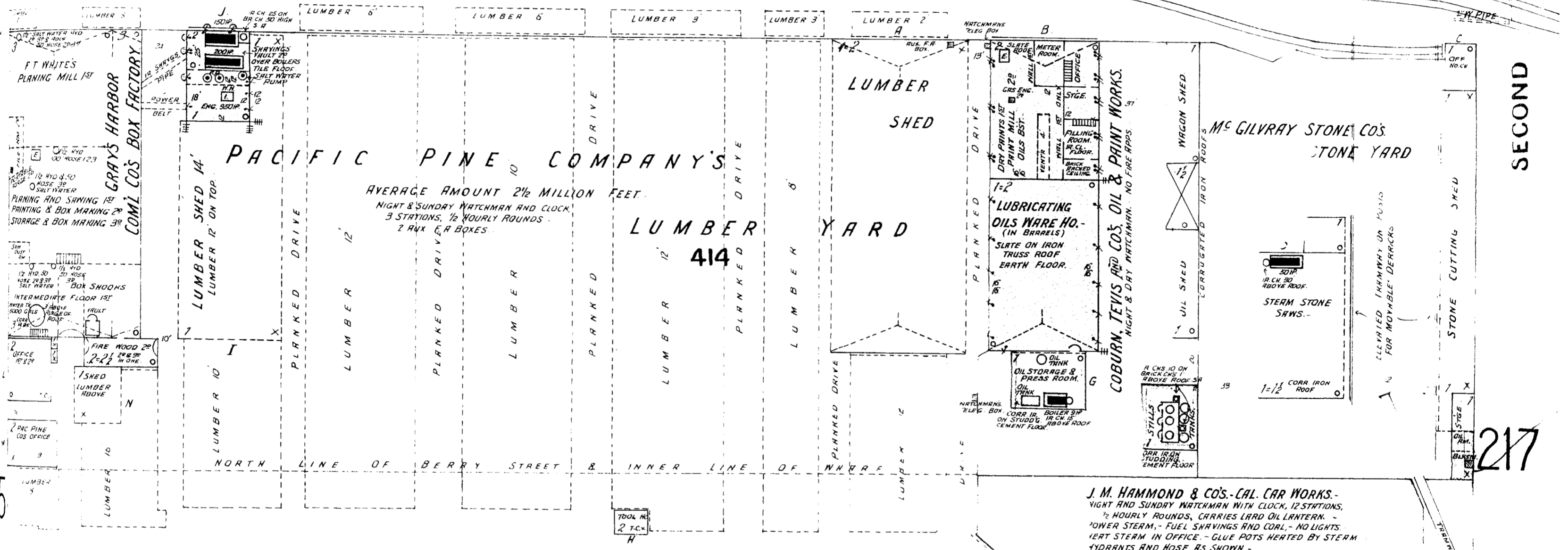
TOWNSEND

PACIFIC OIL AND LEAD WORKS

J.M. HAMMOND & CO'S CALIFORNIA CAR WORKS



KING SOUTHERN PACIFIC R.R. TRACKS TO FERRY SLIPS

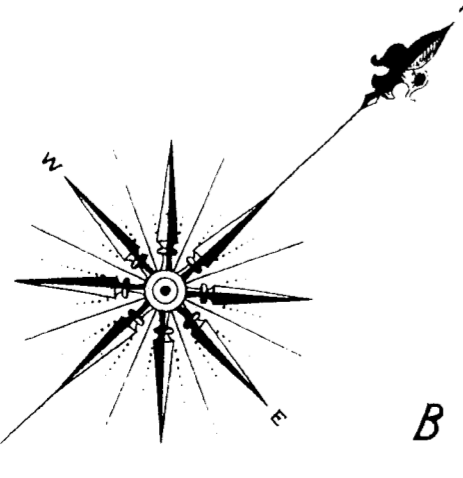


BERRY NOT OPENED WHARF

G.H. COMI CO'S BOX FAC.
 NIGHT AND SUNDAY WATCHMAN
 ONE NIGHT WATCHMAN AND CLOCK 3 STATIONS.
 1/2 HOURLY ROUNDS - WATCHMAN ALSO
 WATCHES LUMBER YARD - POWER STEAM
 FULL SHAWING BLOWN INTO SHAWING TRAIL -
 CITY WATER - HYDRANTS AND HOSE AS SHOWN
 ALSO CHEMICAL FIRE PAILS AND FIRE PAILS
 EACH FLOOR - 6 RUX F.R. BOXES -
 GRINNELL RUT SPRINKLERS IN CEILING OF FACTORY OFFICE
 ALSO UNDER EAVES OF N.S. & E. SIDES & OUTSIDE
 HYDRANTS AND SPRINKLERS CUMIN WITH TANK ON ROOF
 BUILDINGS SUBSTANTIAL - WHITE WASHED INSIDE
 PRINTED AND WHITEWASHED OUTSIDE, CORR IRON ROOF
 LIGHTS ELECTRIC -

PACIFIC OIL AND LEAD WKS.
 MANUF. PRINCIPALLY LINEDSEED & COCONUT OILS
 NO LEAD OR PANTS -
 NIGHT AND SUNDAY WATCHMAN, ELECTRIC WATER
 CLOCK 10 STATIONS, 1/2 HOURLY ROUNDS -
 POWER STEAM - FUEL COAL - LIGHTS GAS -
 HYDRANTS AND HOSE AS SHOWN CONNECTED
 WITH CITY MAINS ALSO WITH RUBBER
 FORCE PUMP WHICH DRAWS WATER FROM
 BAY THROUGH 6 MAIN -
 WATER BBLs AND PAILS IN BLS AND ON ROOF
 6 RUX F.R. BOXES -
 - REFINING HOUSE -
 IRON TRUSS, CORRUGATED IRON ROOF
 CEMENT FLOOR RE - BRICK 2^o
 BLEACH ROOM RE - PRESS ROOM 2^o
 IRON HOOD OVER KETTLES 2^o
 TERMINATING IN IR CAS 10 ABOVE ROOF

J.M. HAMMOND & CO'S - CAL. CAR WORKS
 NIGHT AND SUNDAY WATCHMAN WITH CLOCK, 12 STATIONS,
 1/2 HOURLY ROUNDS, CHAIRS LARD OIL LANTERN -
 LOWER STEAM - FUEL SHAWING AND COAL - NO LIGHTS
 LEFT STEAM IN OFFICE - GLUE POTS HEATED BY STEAM
 HYDRANTS AND HOSE AS SHOWN -
 BARRELS OF OIL IN DIFFERENT PARTS OF BUILDINGS
 NUMEROUS WATER PAILS THROUGHOUT -
 BUILDING VERY SUBSTANTIAL AND TIDY - PRINTED OUTSIDE



Bay of San Francisco.

