

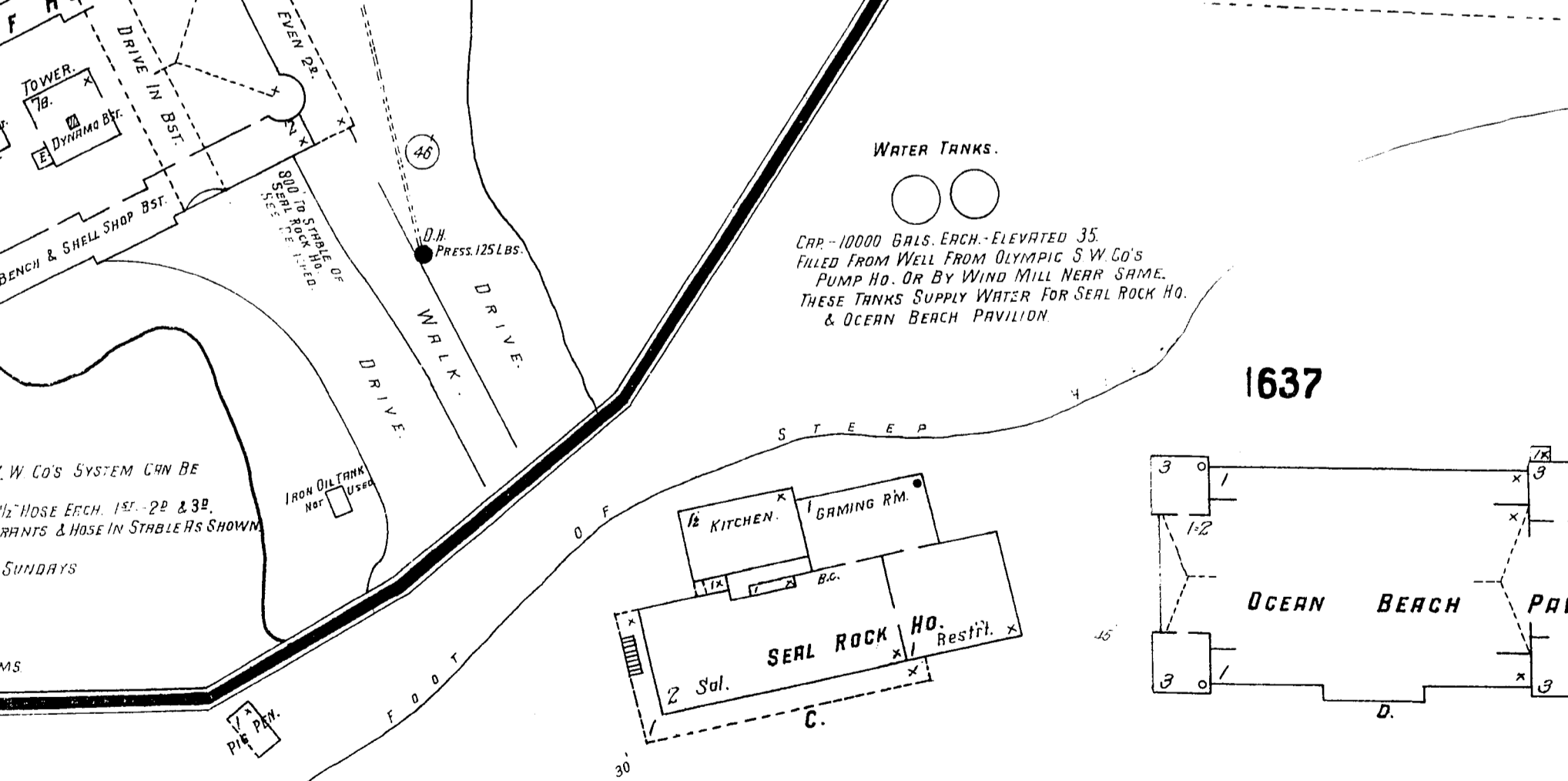
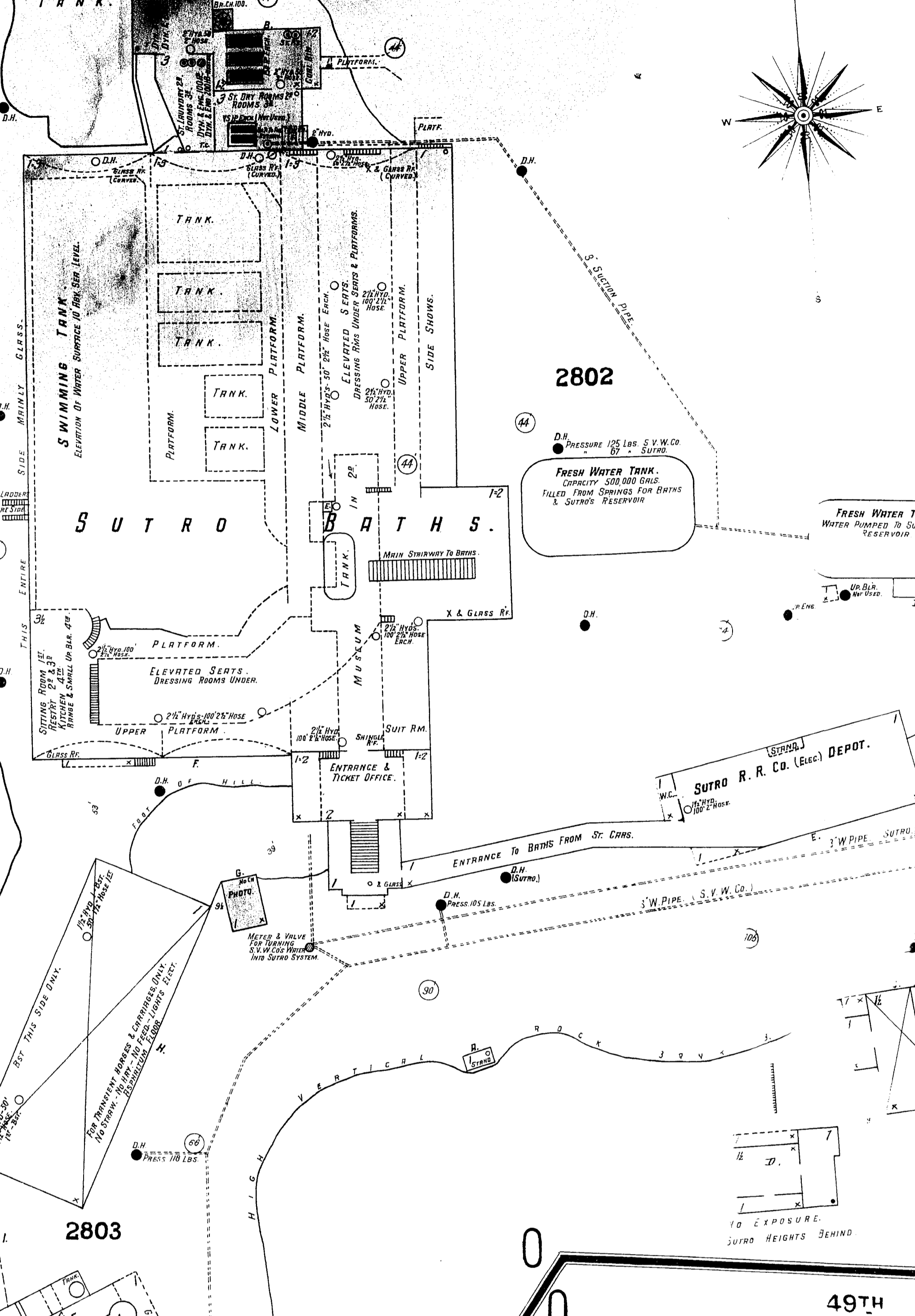
479

SUTRO BATHS.
 POWER SYSTEM: FULL COAL, LIGHTS ELECTRIC,
 3 NIGHT WATCHMEN - ONE FOR MUSEUM - ONE FOR BATHS &
 ONE FOR OUTSIDE BESIDES ONE NIGHT ENGINEER & ONE
 CLEANER IN ENGINE ROOM AT NIGHT
 ONE FIREMAN SLEEPS IN BUILDING - ALSO MAN TO LOOK
 AFTER HOSE & HYDRANTS - STEEL COLUMNS IN BUILDING.
 WATER SUPPLY: 6" S.P.W. CO'S MAIN ON CLIFF AVE. WITH
 6 DOUBLE HYDRANTS (CITY)
 7 DOUBLE HYDRANTS AROUND & NEAR BATH BUILDING & 2 ON
 LOWER PLATFORM INSIDE.
 13 - 2 1/2" HYDRANTS WITH HOSE AS SHOWN IN BATH BUILDING
 FOR FIRE PURPOSES.
 10 - 2 1/2" HYDRANTS IN OR NEAR TANK FOR CLEANING PURPOSES.
 1000 FT. 2 1/2" COATED HOSE IN ALL IN BUILDING.
 300 FILLED TIRE TUBS & 54 FIRE EXTING. DISTRIBUTED THROUGHOUT
 BUILDING.
 HYDRANT & HOSE IN ENGINE RM. & IN BOILER HO. AS SHOWN.
 MUSEUM PROTECTED BY 2 HYDRANTS WITH HOSE - 9 EXTERNS
 & 24 PAILS.
 SUTRO SYSTEM ON AT ALL TIMES IN BUILDING & ON
 PREMISES BUT S.V.W. CO'S SYSTEM CAN BE TURNED
 ON AT ANY TIME AT VALVE IN STREET AS SHOWN.
 SUTRO SYSTEM: RESERVOIR LOCATED ON HILL EAST
 OF CLIFF HO. CAPACITY 250,000 GALS. FILLED BY
 PUMP FROM NEAR BATHS WHICH TRINK IS FILLED
 FROM SPRINGS.
 HYDRANTS & PRESSURE AT SAME AS SHOWN.

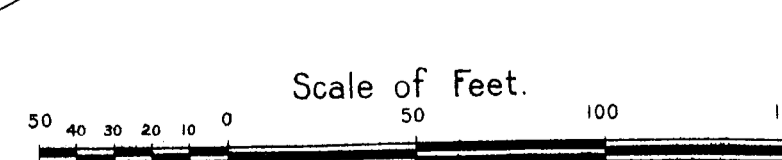
Ocean Pacific

CLIFF HO.
 WATER SUPPLY: FROM S.V.W. CO. & SUTRO SYSTEM.
 SUTRO SYSTEM ON AT ALL TIMES BUT IN CASE OF FIRE S.V.W. CO'S SYSTEM CAN BE
 TURNED ON AT ANY MOMENTS NOTICE.
 ONE 1/2" HYDRANT 100' 1/2" HOSE B5T - 2 1/2" HYDRANTS 100' 1/2" HOSE EACH. 1ST. 2P. & 3P.
 ONE 1/2" HYDRANT & 100' 1/2" HOSE IN 4TH & TOWER. HYDRANTS & HOSE IN STABLES SHOWN
 NIGHT WATCHMAN - LIGHTS ELECTRIC & COAL OIL LAMPS
 UPRIGHT BOILER IN KITCHEN FOR HOT WATER USED ONLY SUNDAYS
 B5T - BAKE HO. LAUNDRY & WORK SHED
 1ST - DINING ROOMS & BAR.
 2P - " " " " " " " "
 3P - " " " " " " " "
 4TH - PHOTO STUDIO & ROOMS. - TOWER - SLEEPING ROOMS

STEEP HILLSIDE.



STEEP HILLSIDE.



Pacific Ocean.

180 79

1537

1536

44072