

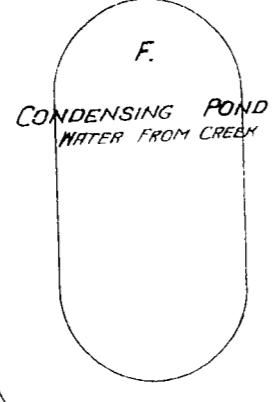
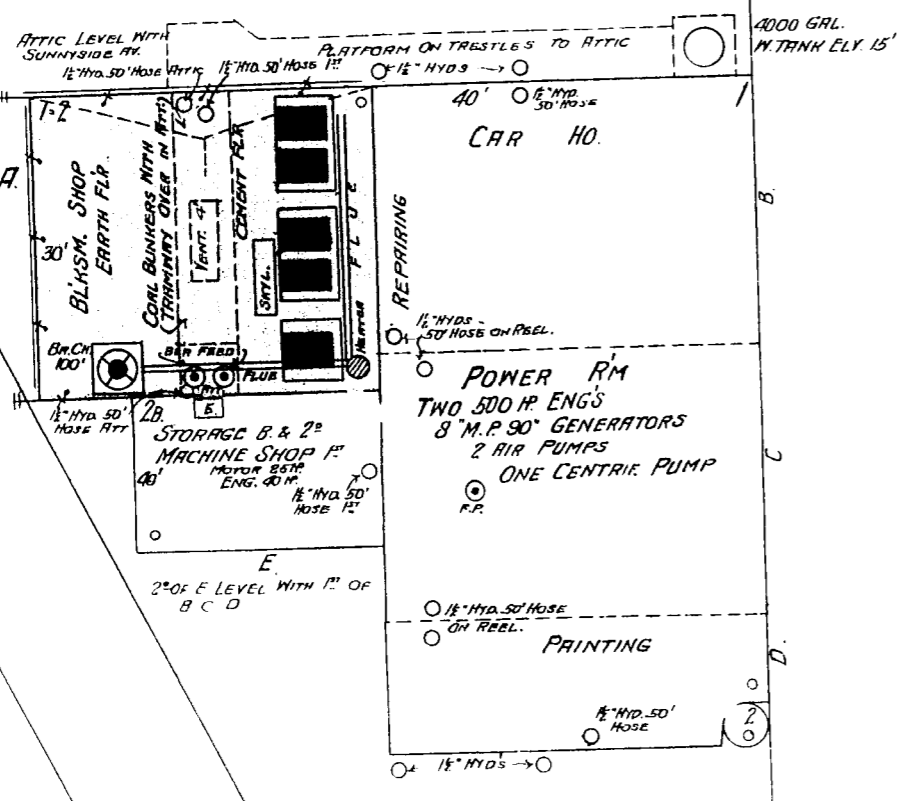
719

HEARST AV.

SAN FRANCISCO AND SAN MATEO ELECTRIC RAILWAY POWER & CAR HO.

ONE NIGHT WATCHMAN - FUEL COAL - HYDS & HOSE AS SHOWN SPRING VALLEY WATER WORKS - 100' OF EXTRA HOSE FIRE PUMP IN POWER RM CONNECTS WITH EITHER POND OR WATER WORKS - PRESSURE 150 LBS.

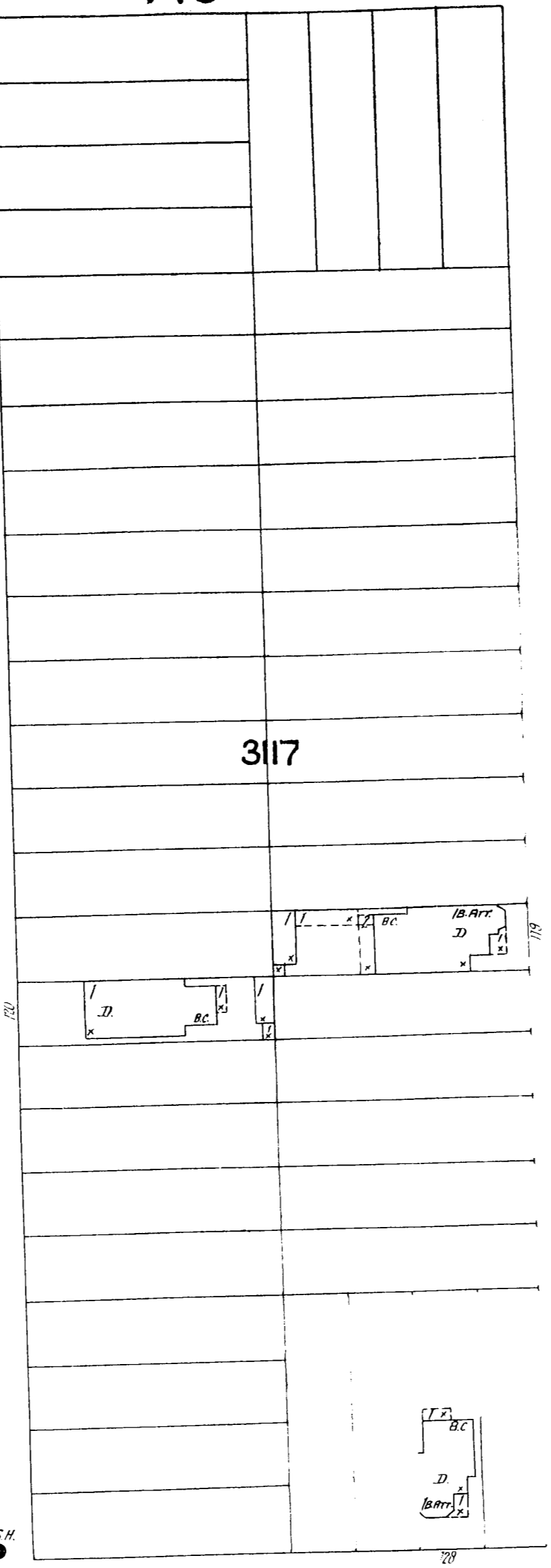
3121



718 BADEN

SUNNYSIDE AV.

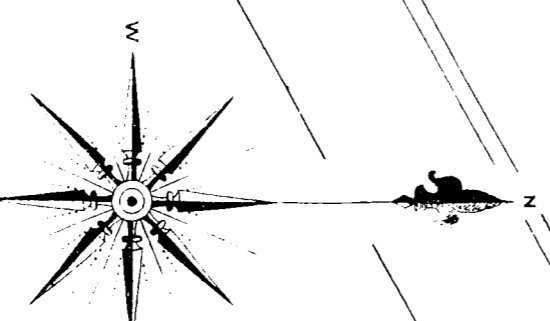
3117



ARCADIA

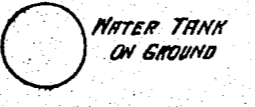
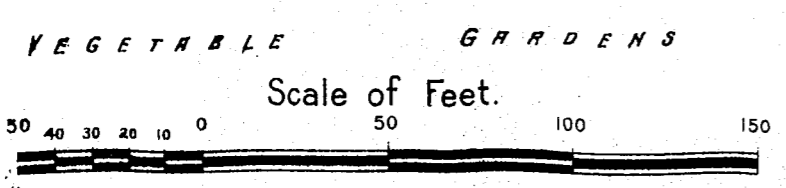
CIRCULAR

3131



SAN JOSE AV.

3132

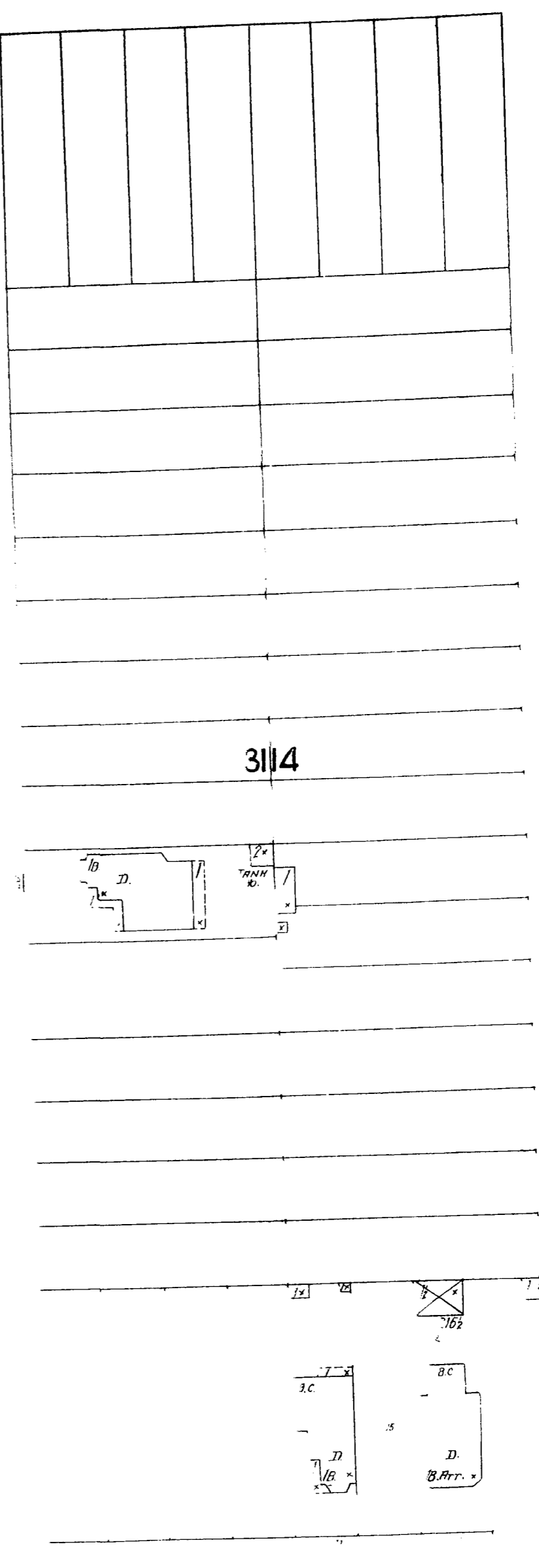


AV

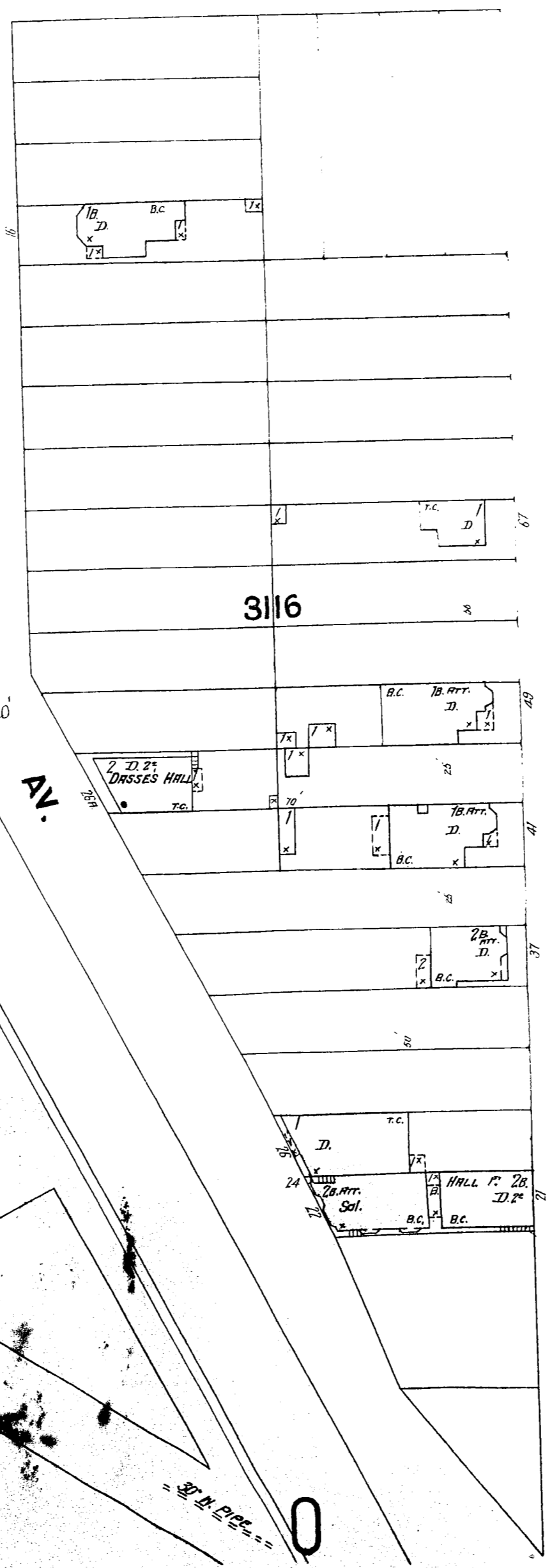
JOOST

MANGELS AV.

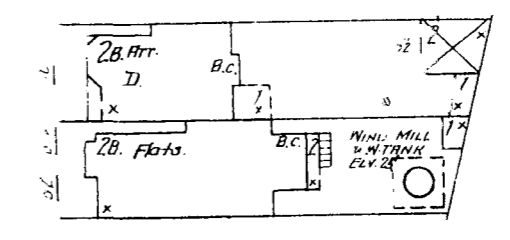
3114



3116



3115



1955

FULTON

