

WHERE TO DINE IN SAN FRANCISCO

# Clinton Cafeteria

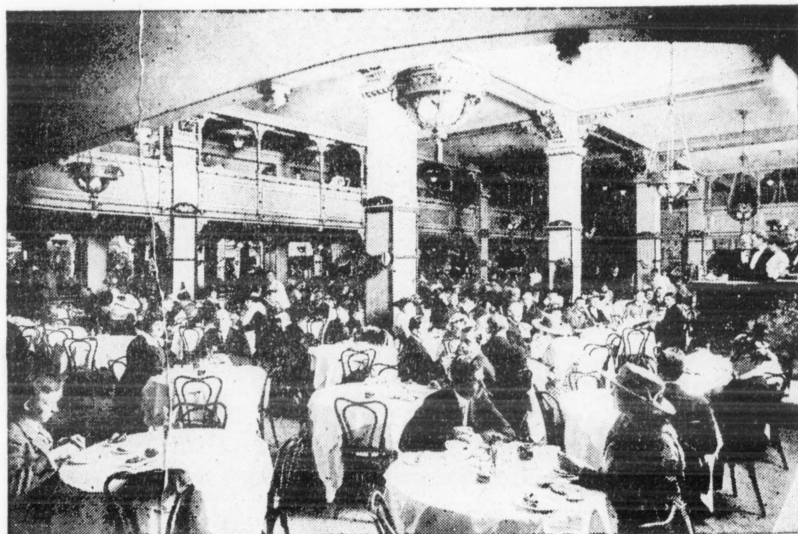
*"THE CAFETERIA DE LUXE"*

**136 O'Farrell Street**

Opposite the Orpheum Theatre

**TELEPHONE KEARNY 3411**

*Open Every Day 7 a. m. to 8 p. m.*



*Public Telephones and Conveniences*

## Breakfast-Lunch-Dinner

Most Beautiful and Popular Cafeteria

Dining Room in San Francisco

*Music--Luncheon and Dinner*

*Charming Ladies Orchestra and Vocalist*

*Comfortable Rest Room for Ladies and Gentlemen*