



LOCAL & LONG DISTANCE MOVING

HOUSEHOLD GOODS and OFFICE FURNITURE moved in up-to-date, fully equipped vans, either local or long distance. Packing containers furnished FREE OF CHARGE, for dishes, cooking utensils, groceries, etc., in sufficient time to pack before moving.

STORAGE

FIREPROOF STORAGE in private locked rooms as low as \$1.50 per month. Special mothproof rooms for upholstered furniture and rugs. Special Piano, Trunk and Baggage Rooms.

PACKING

Most efficient methods employed. Dishes packed at your residence by experts. Furniture crated for shipment.

SHIPPING

We can handle the shipment of your household goods to or from any city in the United States.

Get Our Reduced Freight Rates

ALL ESTIMATES GIVEN FREE.

LAWRENCE

VAN & STORAGE

11th and R Streets

Telephone CAPITAL 2520

W. E. HIBBITT
Pres. and Gen. Manager

J. E. MONRO
Asst. Manager

M22-8

Mimeograph Duplicating Machines and Supplies

All Mimeographs and Mimeograph supplies, including Mimeograph, Mimeotype stencil pan, Mimeograph Ink, etc., and only by the following authorized dealer.
"WHERE TO BUY IT"

CROCKER H & CO INC 928 K.....Main-264

Mimeographing

Central Letter Co Cap Nat Bldg.....Main-5171
Letter Shop Forum Bldg.....Capital-692

Mining Business

Kinnert R L 430 J.....Main-3601
Mining Assn of Calif 430 J.....Main-3601

Mirrors

Bell Paint & Glass Co 1402 J.....Capital-1457

Model Making Business

Experimental Models
HANSEN MACHINE WKS 728-12th.....Main-313

Monument Business

Carlaw Bros 10th & R.....Capital-3918-J
Lucas J C 2430-10th.....Main-5343-J
Lucas Peter Monumental Wks 1800-28th.....Main-7644-J
McCaffrey James P Monumental Wks 2421-10th.....Main-6197

Mortar

CONSTRUCTION MATERIALS CO 24th & Jane River.....Main-5357

Morticians

See Funeral Directors

Morwear Paints

(Look on "P" pages under "Paint Business")

Moth Proofing

BEKINS VAN & STORAGE CO
Moth-proofing Process
Guaranteed 5 Years
Anything a Moth Can Eat Can Be MOTH-PROOFED. New or Old Articles Done in The Home or at Our Plant Without Inconvenience to You. Only One Application Necessary—Odorless, Safe. Call for Free Inspection 1800-21st.....Phone Main-346

Motion Picture Equipment

Business

Cameras, Motion Picture

SACRAMENTO ART STUDIO

MOVIE CAMERAS and PROJECTORS

Bell & Howell Films and Others.
Movie Film and Lamps in Stock.

FRANK McDUGAL

1017-10th.....Main-7271

Motorcycle Business

Best Joe Motorcycle Agency 3108 8th Dr. Main-9900
Cameron H & Son J.....Main-3650
Harley-Davidson Agency 815-12th.....Main-1951
Indian Motorcycle Agency 714-12th.....Capital-2099
Murray Frank J 815-12th.....Main-1951
Super X & Henderson Motorcycle Agency 3108 8th Blvd.....Main-9900

Repairs, Motorcycle

BASTIN INDIAN MOTORCYCLE AGENCY

INDIAN MOTORCYCLES

Expert Repairing

COMPLETE LINE OF PARTS AND ACCESSORIES

714-12th.....Capital-2099

Harley-Davidson Agency 815-12th.....Main-1951

Motors

RELIABLE ELECTRIC WKS 1217-7th.....Main-2523

Moving Business

A Transfer & Express Co 808-11th.....Capital-1169
ACME TRANSFER & STORAGE CO 800-4th.....Main-888

(Continued Next Page)

Moving Business—(Cont'd)

Amer Chain of Shippers 800-4th.....Main-6059

Anderson's Transfer Co 1102 1/2 J.....Main-4157

AUTHORIZED P P TRANSFER & STORAGE CO 912-4th.....Main-528

Bekins Van Lines Inc 1800-21st.....Main-346

BEKINS VAN & STORAGE CO 1800-21st.....Main-346

Boone's Transfer 2064-30th.....Capital-49

Bowl J W 2923 T.....Capital-4186

Buckland E J 831 1/2-2nd.....Main-994

Buck's Transfer 931 1/2-2nd.....Main-994

Call Trans & Moving Co 1915 J.....Main-133

CAPITAL VAN & STORAGE CO 1800-21st.....Main-346

ELECTRIC TRANSFER & STORAGE CO 918-20th.....Main-23

Flint's Express 2008 J.....Main-10205

FORD & HARRY 415 J.....Main-605

FRANK'S TRANSFER 2300 Del Paso Blvd.....Main-9634

Globe Transfer Co 1811-6th.....Main-729

Graham C R 1117-33rd.....Capital-258

HUNT TRANSFER & STORAGE CO 3412-4th Av.....Capital-8

Jennings Fuel & Transfer Co 307-18th.....Main-9270

Jones H 2420-17th.....Main-5670

Land's Transfer 918-5th.....Capital-3022

Land's Transfer & Storage Co 701-7th.....Main-5137

Lawrence Fireproof Storage Co 1108 R.....Capital-2520

Lawrence Warehouse Co 1108 R.....Capital-2520

Leitch Draying Co 1230 J.....Capital-1295

LIBERTY VAN LINE 2114 K.....Main-2487

Martin Dan 913-2nd.....Main-999

McLaughlin Draying Co 2221-5th.....Main-433

Me & You Transfer & Storage Co 1516 Del Paso Blvd.....Capital-2481

Merchants' Special Del & Trans Co 1815 Q.....Main-146

Moscow W E Hagglerwood.....Main-2502-J

Murphy S 315 M.....Main-2254

Pac Transfer Co 1901 & 2nd.....Main-5664

Peoples Express Co 918-20th.....Main-23

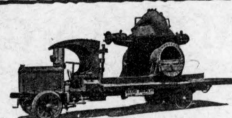
Peters Draying Co 2510 U.....Main-4230

River Boat Express Co 914-8th.....Main-1493

SACRAMENTO-S F EXPRESS CO 1114-11th.....Main-1493

Santa Rosa Express Co 1815 P.....Main-261

(Continued Next Page)



WILKINS DRAYING CO.

for

STORAGE
COMMERCIAL DRAYING
RIGGING
HOISTING
Safe and
Machinery Moving

Phone—

Main 48

29th and R Streets

"If It's Movable
—We can move it"

M23-3

LOCAL & LONG DISTANCE MOVING

BEKINS VAN & STORAGE CO.

Phone **Main 346**

...it costs
no more to have
BEKINS SERVICE

—Weatherproof, handsome white vans and trucks for any size job.
—Sterilized pads and quilts.
—Courteous Drivers and Movers.
—Ballroom Tires.
—Over thirty-six years' experience.
—A reputation for reliability.

LONG DISTANCE MOVING

Frequent trips between points on the map and thirty miles each side of the highways. (Under State R. R. Commission Franchise.)

Bekins Steel Port-O-Van Service to eastern and coastal points (no packing or crating)—Bekins "Pool Car" Consolidated Shipments at reduced freight rates. Packed and crated by experts. Affiliations everywhere.

Estimates and advice on how to move, ship, pack or store your furnishings at least cost cheerfully given without obligation.

Our depositories conveniently located at
21st and R Streets

BEKINS

VAN & STORAGE CO.

Offices and Depositories in:
Los Angeles
Beverly Hills
Hollywood
Pasadena
Glendale
Santa Barbara

San Francisco
Berkeley
Oakland
Fresno
Sacramento
San Diego

17 DEPOSITORY IN CALIFORNIA