



ENTERPRISE

60

Robert Gillogly

Bob,
Have a girl
in every port now!!
John Smoto

Best of luck Bob.
You a great
guy
Smiley

Bob
BEST OF LUCK TO
YOU IN THE FUTURE.
I HOPE YOU HAVE FUN
YOU DO. ALSO HAVE FUN
IN THE NAUO
TIN TAILMANUTES

Here to a swell
walking partner in
shaduation. This is real
important to all of us
I couldn't have gotten a
nicer guy to walk with
Good luck always in everything
you do. Better bring lot's
bleenet Sunday night
see good + have a blast too. night.
Love always
M. O'Henry
"Go"

Bob,
I want to wish
you the best of
everything that
is good in the
future. You are
a real sweet +
nice guy. I'll
miss you. Always
Love
Tom "Go"

Lots of Luck to
a real nice guy
Tom "Go"

Dear Bob -
I want to wish
you the very best
life has to offer. You're
a great guy & really
deserve it! It's
been fun knowing
you.
Love, Jackie
P.S. Remember
Ditch
Day?

1960 ENTERPRISE

First steps

in our new

PETALUMA HIGH SCHOOL

Petaluma, California

Volume LXXX





Our Modern

THE NEW PETALUMA SENIOR HIGH SCHOOL REPRESENTS A FUNCTIONAL, FLEXIBLE, ECONOMICAL AND PLEASANT BUILDING. IT WILL UNDOUBTEDLY BE USED FOR FIFTY YEARS OR MORE. THROUGH ITS CLASSROOMS WILL PASS THOUSANDS OF BOYS AND GIRLS. IT REPRESENTS PART OF THE HERITAGE FROM OUR GENERATION. . . . THE



School Plant

SCHOOL COVERS 23.95 ACRES AND CONTAINS 18 CLASS ROOMS, 5 SCIENCE ROOMS, MUSIC ROOM, ART ROOM, SHOP, MULTI-PURPOSE ROOM, LIBRARY, KITCHEN, ROOMS FOR ADMINISTRATION, AND GYMNASIUM. ESTIMATED TOTAL COST OF THE BUILDING WAS \$2,159,913.00. BUILT TO HOLD A MAXIMUM OF 1100 PUPILS, DEDICATION WAS OCTOBER 31, 1959.



DEDICATION

In memory of William (Rusty) Soernsen, our beloved friend and classmate, this book is dedicated.

We, the class of 1960, are the first to graduate from the new Petaluma High School. During our high school years we have been moved from building to building and now, in this, our senior year, we have had the privilege of being the forerunners of one of the most modern school plants in northern California. This year has been filled with re-organizing our ways and our steps. Since we are the "big feet" and our underclassmen look to us to set their steps, we hope we have left a pattern by which we will be proud to be remembered. Our year has been filled with many happy and humorous memories. We can never forget the school, the teachers, the kids, the games, and the dances which were all a part of the

First Steps in Our New P. H. S.

CONTENTS

STAFF	5
CLASSES	13
CLUBS	45
SPORTS	65
SALES	75

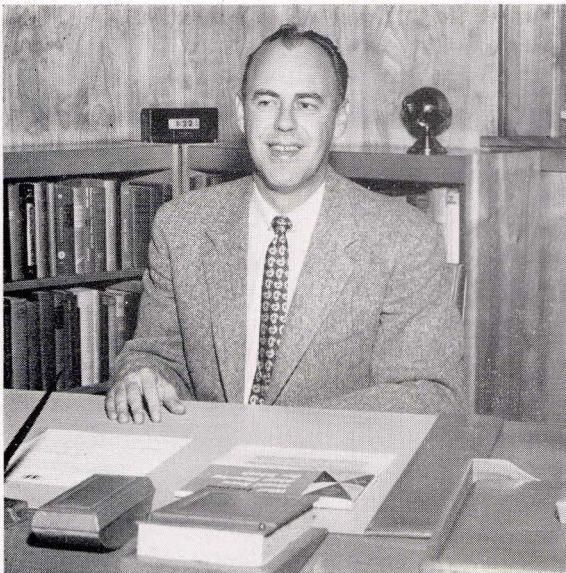
Appreciation

We, the staff and class of the 1960 Enterprise, wish to express our deepest appreciation to Mrs. Catherine O'Brien for her support in organizing and directing our yearbook. Being advisor of the yearbook was a completely new experience for Mrs. O'Brien, and we all feel that she did an excellent job.



S T A F F

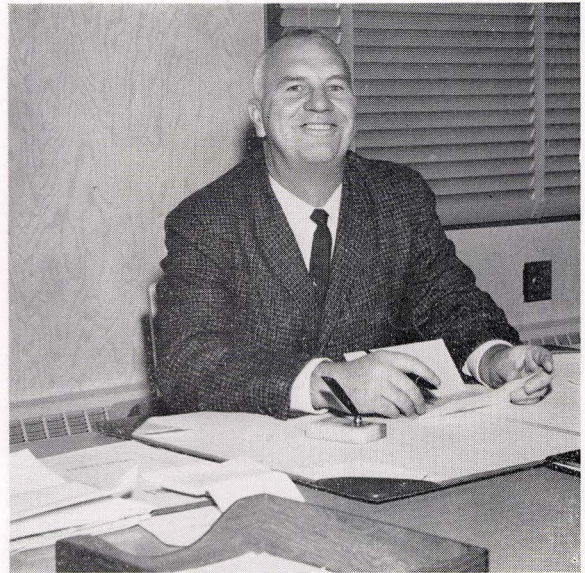




DR. WILLIAM R. MANNING
City Superintendent of Schools

The student body, faculty and all personnel are to be commended for this first year of operation of the new Petaluma Senior High School. In reality this has been a period of transition—from the old to the new. We behold a blending of a solid foundation of stable traditions and spirit of the past with neoteric intensity and pacing in the superstructure of the present. The direction for the future has been established well.

—WILLIAM R. MANNING



MR. HENRY KNIGHT
Principal

The publication of the 1960 Enterprise begins a new era—the first in a long line of year-books in a new school. If adaptability is an outcome of education, the class of 1960 has met and passed the test. In each year of senior high school the members of that class have been in a different school plant. I want to congratulate the Class of 1960 on the co-operation given to the school in meeting these changes, and in particular the help given this first year in our new school.

—HENRY KNIGHT

Here Are Our Deans

MISS CATHARINE DUGGAN
Dean of Girls



MR. ARTHUR COLLINS
Dean of Boys



We Set the Pace...

With a theme of "Let's Get in Step," the first dance of the year, the senior class began their first steps in the new P.H.S. quite successfully. The fall and spring cabinets, along with the entire class, brought about new projects and customs to the school.

The spring semester saw such successes as the senior play, which was held over for the first time in the history of P.H.S., the senior ball, and the final preparation for graduation. The seniors have finished this year with a lot of spirit and will now embark on a new era of challenges.



MR. HOWARD HILL
Junior Counselor

The sophomore class showed its enthusiasm in the beginning of the year by winning \$10 for having the highest percentage of P.T.A. members. The first big task was to write the sophomore constitution and elect class officers. The first money-making project was a cookie sale, from which a profit of \$26 was gained and given to the Foreign Exchange Student Fund. The biggest and most successful activity for the sophomore class this year was the Mardi Gras dance, which was thoroughly enjoyed by all. Twenty-four dollars was given from the proceeds of this dance to the Foreign Exchange Student Fund. The class is looking forward to a bigger and better future year as juniors.



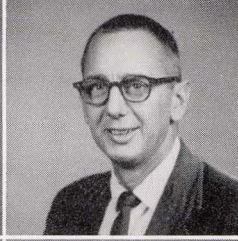
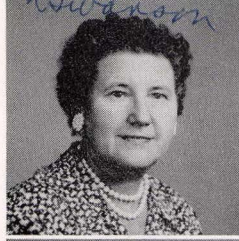
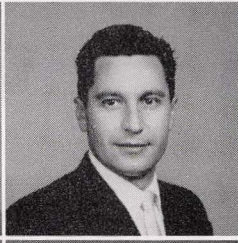
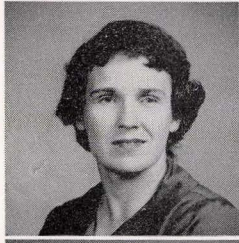
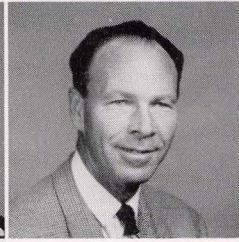
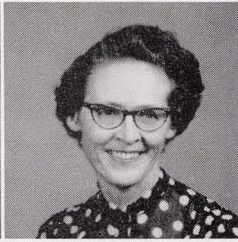
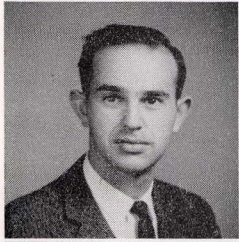
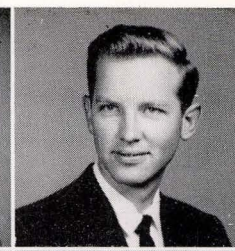
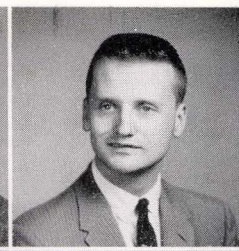
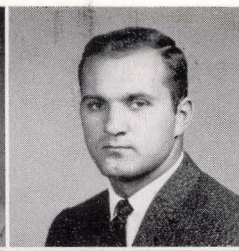
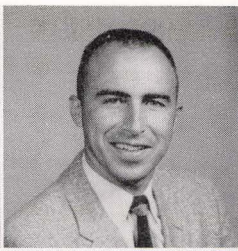
MISS SHIRLEY MacIVAIN
Senior Counselor

The junior class took its first step by hosting a dance in the fall. With the success of this dance they were able to contribute \$50 to the Foreign Exchange Student Fund. In the new school they paved the way for the annual junior task of putting up Christmas decorations. Though space was limited, the job was quite successful.

In the spring their next big step was to pick out the senior jackets and sweaters. The juniors presented another dance, and the close of the year found the girls preparing to carry the ropes and flags at the graduation ceremonies in June.



MRS. DOROTHEA SWANSON
Sophomore Counselor



Mr. Eugene Bernhardt
Geometry, Gen. Math

Mr. George Hatfield
Instrumental, Band,
Orchestra, Choir

Mr. Fred Brock
Biology, P.E.,
Soph. Orientation

Mr. Leonard Heinz
English, Latin

Mr. Lewis Campbell
English, Gen. Comp.,
Directed Reading

Mr. Howard Hill
Soph. Orientation,
Jr. Counselor

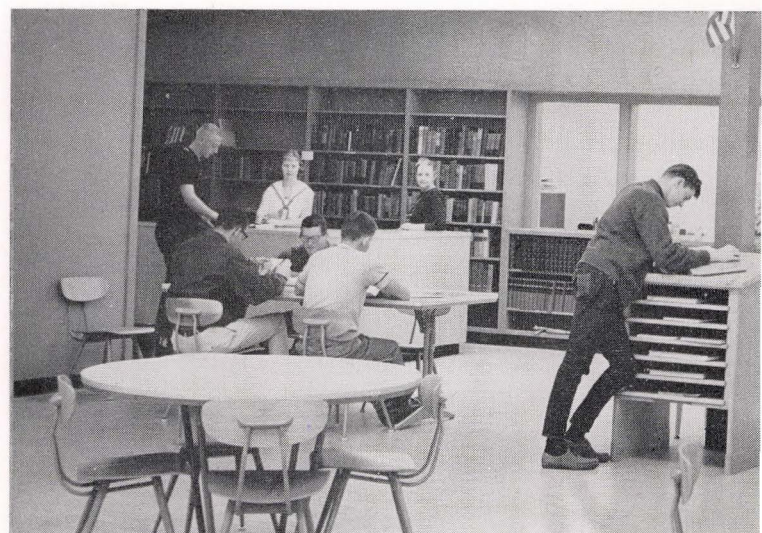


Mr. Wilson Craig
French, U.S. History

Mrs. Marian Holverson
English, Gen. Comp.,
Creative Writing

Mrs. Dorothy Petersen
English, Study Hall

... We Pushed



Mr. William Abbey
Physical Education

Mr. James Giovando
Geometry, Physics,
Trig., Audio-Vis.

Mrs. Catherine O'Brien
English, Enterprise

Mr. Al Sirek
Ag. Science, Ag. Shop,
Sr. Review Math

Mrs. Dorothea Swanson
History, Soph. Counselor

Mr. DeMont Walker
Biology

Mr. Ralph Azevedo
Soph. Orientation,
U.S. History

Miss Mary E. Hance
Spanish

Mr. Gino Paieri
Mech. Drawing, Crafts

Mrs. Carol Snyder
Bus. English, Shorthand,
Typing, Gen. Business

Mr. William Thorsen
Bookkeeping, Typing,
Gen. Business

Mrs. Jane Wasson
Driver Training

HERE IS THE LIBRARY



Mr. Alfred DeMartini
Senior Problems,
Typing

Mr. Rollie Leeberg
Typing, Salesmanship,
Work Exp.

Miss Catharine Duggan
Senior Problems,
Dean of Girls

Miss Shirley MacIvain
Girls' P.E.,
Senior Counselor

Mr. James David
Metal and Wood Shops

Mr. Ralph Del Sarto
Biology, Gen. Business

Miss Blanche E. Hurd
English, World Lit.

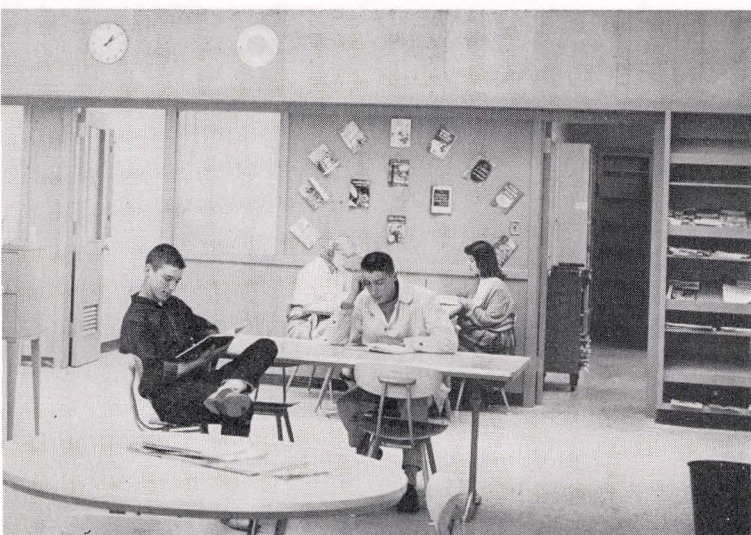
Mr. Brand Johnson
Chemistry

Miss Aletha Olmsted
Soph. Orientation,
Girls' P.E.

Mr. Mervyn Porter
Ag. Science, Ag. Shop

*With very best
wishes
Paula Stonitsch*

You Through



WHERE EVERYBODY STUDIES SO HARD ???



Mr. Eldridge Erickson
Algebra, Senior Math

Miss Betty Martinsen
Homemaking,
Adv. Clothing

Mr. Larry Savage
Arts, Crafts

Mrs. Paula Stonitsch
Sr. Problems, German

Irene von Tagen
Nurse

Miss Dorothy Weightman
Girls' P.E.

Mr. George Gillmore
Boys' P.E., Intramural

Mr. Harold Nelson
Wood Shop

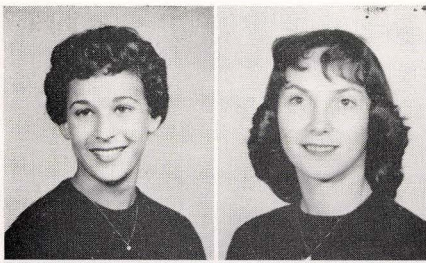
Mrs. Eleanor Schofield
English, Adv. Comp.

Mr. Fred Stopsky
U.S. History, Journalism

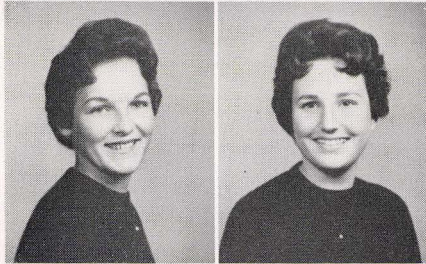
Mr. Roy Voss
Auto Shop

Mrs. Gwyneth Wilde
Librarian

Ray Voss



JUDY LERER
Secretary of Citizenship
MIKEL DEVINE
Secretary of Social Affairs



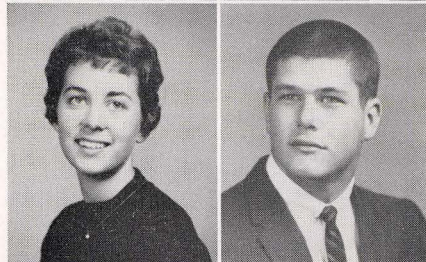
BARBARA STURTZ
Recording Secretary
DIANE WILFERT
Secretary of Finance



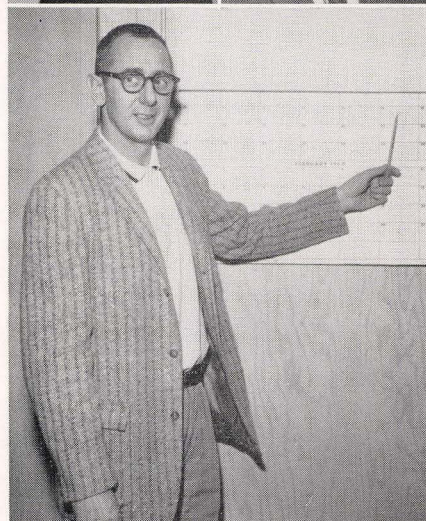
SUSAN HANSEN
Secretary of Rallies
LYNN ABBEY
Senior Class Representative



LARRY OSTROM
Junior Class Representative
JUDY BURCHELL
Soph. Class Representative



NANCY ARMBRUSTER
Girls' Club Representative
RAY RAFFO
Boys' League Representative



MR. WILLIAM THORSEN
Cabinet Advisor

We Took the



GORDON AUGUSTINE, President

Fall

The fall cabinet's main activity was to finish the revision of our school's constitution. The cabinet and Mr. Thorsen, our advisor, after working very hard to revise it, submitted the revised constitution to the student body which accepted it by a majority vote. After the main project was completed, the cabinet went on to accomplish many other tasks. A hall monitor system was started by the cabinet. This system kept unauthorized students and noise out of the corridors during class time. We started a cabinet file, to be used for reference when needed, and we also solved many other school problems.

The cabinet and I thank the members of the student body for the cooperation and understanding they have given us this memorable first semester in our beautiful school.

I would like to compliment my cabinet for its wonderful help and support, and also Mr. Thorsen for his able guidance. Serving as the first president of Petaluma High School has been a great honor which I thoroughly enjoyed. I earnestly thank the students and faculty of P.H.S. for giving me such a worthy and beneficial experience. Thank you.

—GORDON AUGUSTINE

Biggest Steps...



DAVID CHANCE, President

Spring

Much was accomplished for the students during the spring semester. The cabinet's Noon Hour Activities Committee, headed by Ray Raffo, was responsible for obtaining the picnic tables, securing permission to use additional lawn area, and helping to rejuvenate the noon dances. A clearer understanding of our school's financial system was but one result of the committee on investigation of school expenditures, led by Pat Peebles.

The cabinet wishes to thank Mr. Thorsen, Mr. Knight, the Delegates' Assembly, and the entire student body, for without their co-operation it would have been impossible to accomplish a thing.

MARIA VICTORIA PEREZ
Vice-President

PAM SHULTZ
Social Secretary

TOM BAKER
Secretary of Citizenship

DIANE WILFERT
Secretary of Finance

JILL RIEBLI
Recording Secretary

HERMAN CHAN
Secretary of Rallies

NANCY ARMBRUSTER
Girls' Club Representative

RAY RAFFO
Boys' League Representative

JUDY LERER
Senior Class Representative

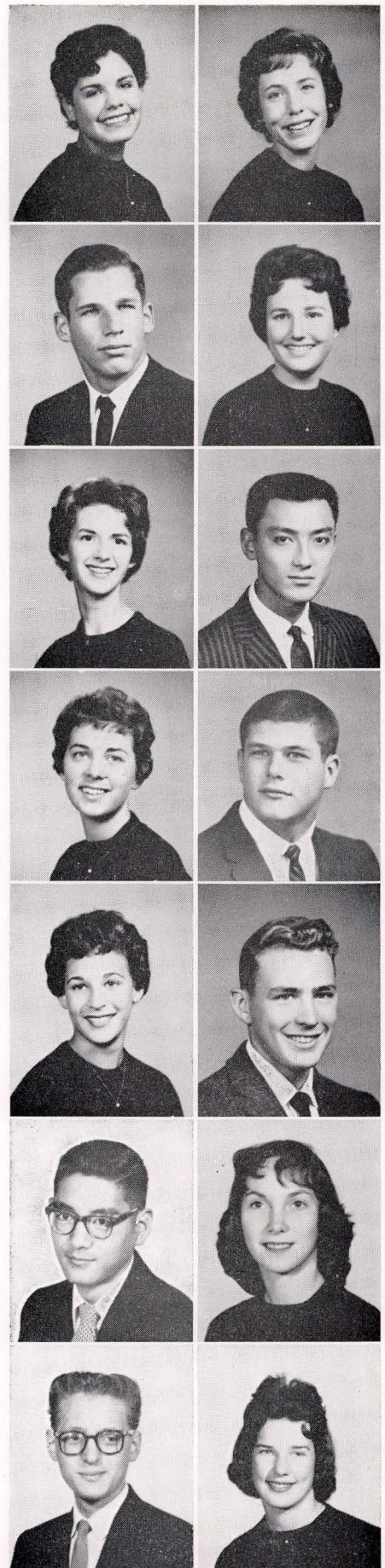
PAT PEEBLES
Senior Class Representative

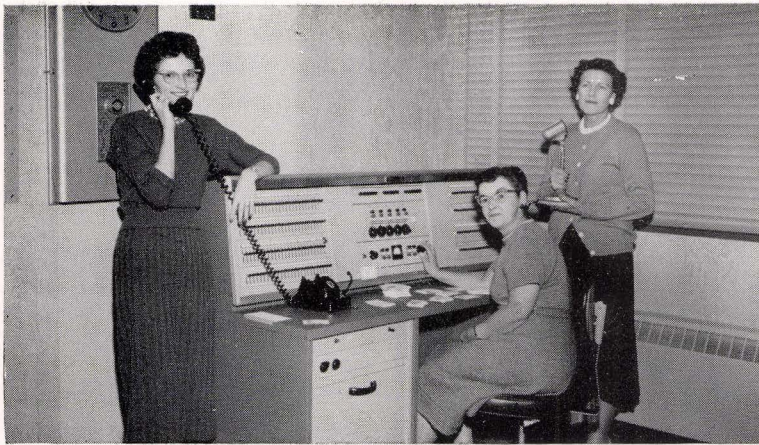
DENNIS FUJITA
Junior Class Representative

MIKEL DEVINE
Junior Class Representative

JOHN CHANCE
Soph. Class Representative

LINDA BROWN
Soph. Class Representative





... We

OFFICE WORKERS (left to right): Mrs. Rosalyn Brown, Mrs. Marie Johnson, Mrs. Edna Kruse.

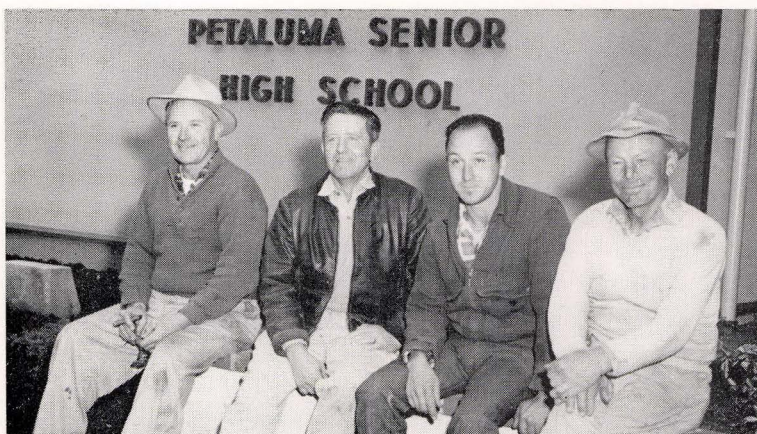
Helped

CAFETERIA WORKERS (left to right): Mrs. Ida Maack, Mrs. Blanche Schoeningh, Mrs. Huldah Koehnke, Mrs. Christie Paulsen, Mrs. Ruby Battison, Mrs. Doris Harms.



You

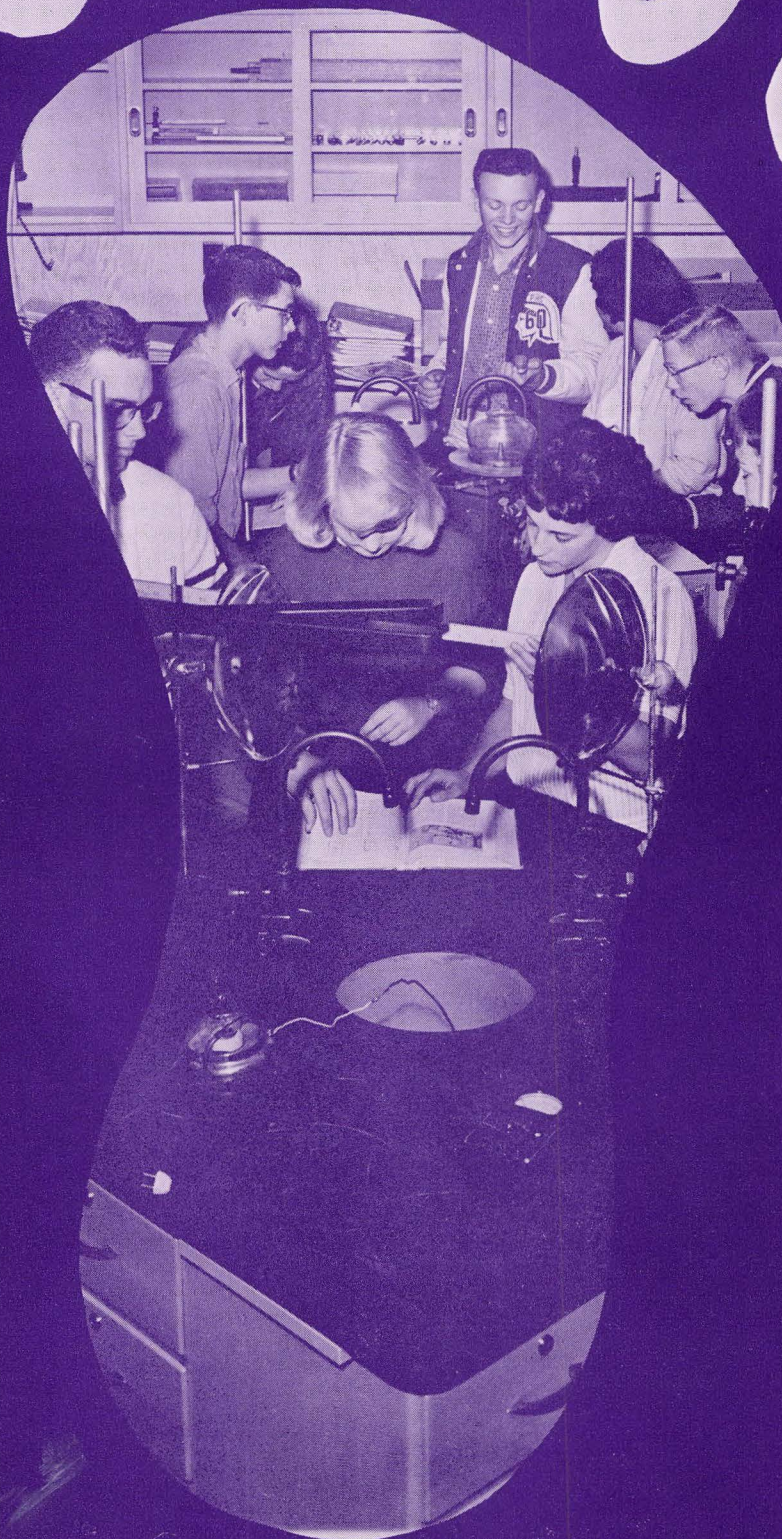
BUS DRIVERS (left to right): Jim Veronda, Hank Eslick, Ellsworth Bean, Arthur Chick, Delmer Turner, H. Johannsen, and Alvin Patocchi.



Too!

GARDENERS (left to right): Mr. Emil Brunello, Mr. Hans Jorgensen, Mr. Pete Fomasi, Mr. Angelo Bonomi.

C L A S S



Class Song

FAREWELL, ALMA MATER

Dear Petaluma High School,
The hour has now drawn nigh;
The Class of Nineteen Sixty
Must bid you all good-bye.

The Footsteps of the Future
Are sounding in the halls.
Our path, so plain before us,
Leads forward; fortune calls.

But yet may we remember
The days we've spent with you;
The fun we've had together,
The many friendships too.

For Petaluma High School
Our hearts e'er will swell;
Farewell, Alma Mater—
To you, farewell.

School Hymn

ALL HAIL THE PURPLE AND THE WHITE

Lift happy voices, praises unfold, all hail
the Purple and the White.
Let songs of gladness sound through the skies
for our dear Petaluma High School.
And strive to show, as on we go, ability and power
To do the right with all of our might—
All hail the Purple and the White!

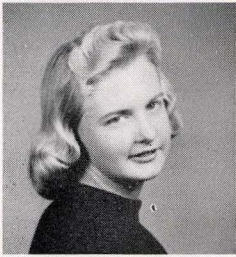
Fight Song

ON TO VICTORY

On to victory, our sturdy team must win today;
Our alma mater looks to you to bring us glory,
So let's fight—rah! rah!
And when the boys come on the field,
They're out to fight to bring us fame;
So loyal Trojans, one and all, let's cheer them
On to Victory!



CAROL
VAN BEBBER
Vice-President



NANCY
JOHNSON
Secretary



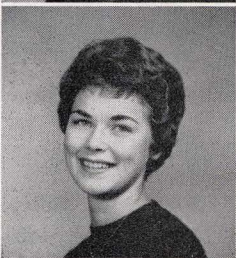
CAROL
UYEDA
Treasurer



EVELYN
CHAN
Girls' Club
Representative



GARY
CARLSON
Boys' League
Representative



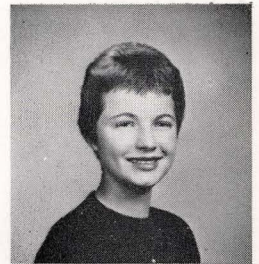
LYNN
ABBEY
Cabinet
Representative



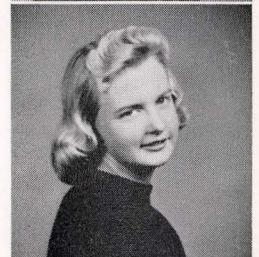
RUSH PUTNAM
Fall President



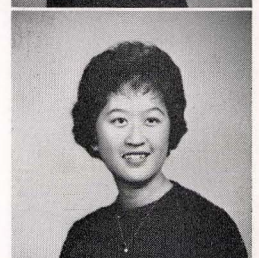
RUSH PUTNAM
Spring President



ELIZABETH
STONITSCH
Vice-President



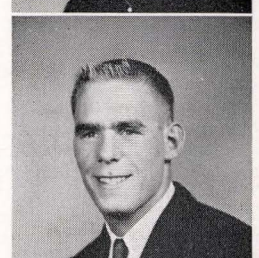
NANCY
JOHNSON
Secretary



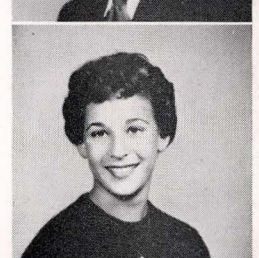
CAROL
UYEDA
Treasurer



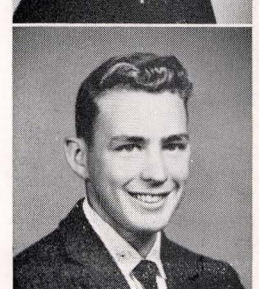
EVELYN
CHAN
Girls' Club
Representative



GARY
CARLSON
Boys' League
Representative



JUDY
LERER
Cabinet
Representative

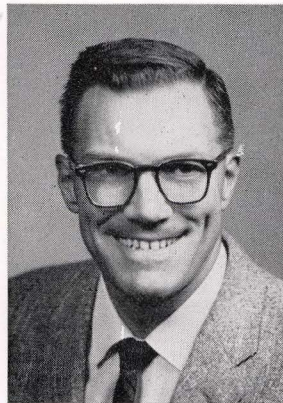


PAT
PEEBLES
Cabinet
Representative

*We were
elected...*



**Senior Class
Officers**

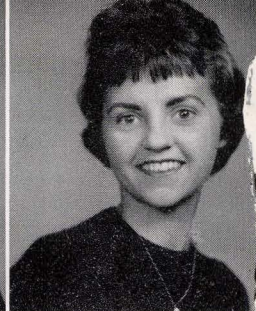


MR. HOWARD HILL
Senior Class Advisor



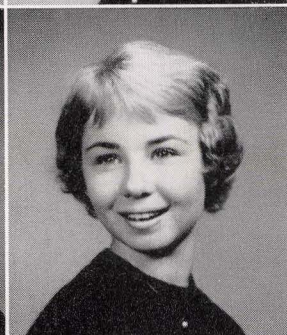
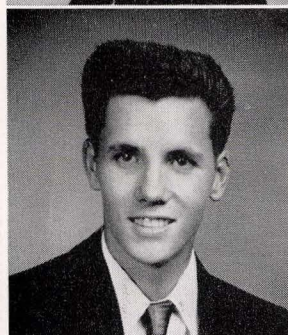
LYNN ABBEY
Cheer Leader, Class Officer,
CSF Life Member, Bus. Mgr.
Enterprise

NORVA ACHENBAUGH
GAA, Trojan, Sr. Play
Comm., Sr. Banquet Comm.



BETTE ALBINI
Carried ropes, GAA, Sr.
Play Comm., Sr. Banquet
Committee

BETTY ALEXANDER
Song Leader, French Club
GAA, Sr. Ditch Day Com

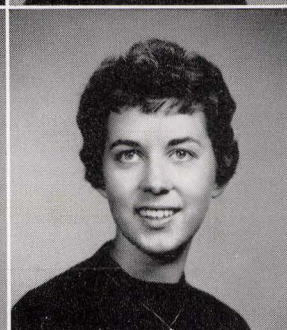


BILL ANDERSON
Football, Basketball,
Baseball, Trojan

MARIBETH ANDREAS
Pep Club, Trojan, Sr. Ball
Comm., Girls' Club

Class

19



ROBIN ARENANDER
GAA, A Cappella, Latin
Club, Jr. Gray Lady

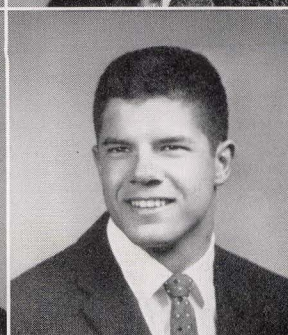
NANCY ARMBRUSTER
Foreign Exchange Student,
Song Leader, Girls' Club
President, CSF

PAUL ARMBRUSTER
Intramural Sports, Sr. Ditch
Day Comm., Basketball,

JAMES ARVOLD
Football, Band, Honor
Society, Boys' League.

GORDON AUGUSTINE
Football, Track, Student
Body President, Delegate
Assembly

PETER AZEVEDO
FFA Officer, Safety Comm.,
Football, Senior Banquet
Comm.



LOUIS BACCALA
Football, Track, Intramural
Basketball, Boys' League

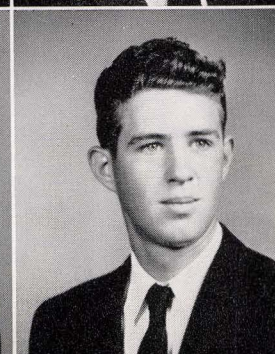
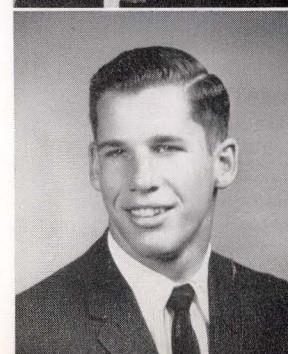
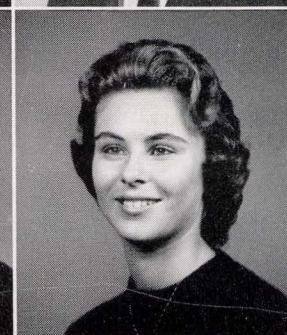
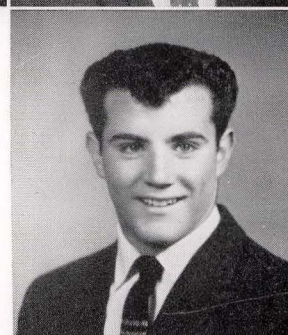
ANNABEL BAKER
GAA, Honor Society, Class
President, Sr. Ball Comm.

ARTHUR WINTON BAKER
Tennis, Pep Band, Honor
Society, Science Club

WALTER THOMAS BAKER
Football, Golf, Honor
Society, Secretary of
Citizenship

RONNIE BALDWIN
Boys' League

ROBERT BARR
FFA, Boys' League





KRISTINE BERGMAN
CSF, Merit Comm., Pegasus,
Drama Club



ROBERT BERTON
Track, Intramural Sports, Sr.
Ditch Day Committee,
Boys' League

DONNA BEARD
Carried ropes, Sr. Banquet
Comm., Girls' Club

ROBERT BELTZNER
Tennis, Intramural Sports,
Swimming, Traffic Comm.

of...

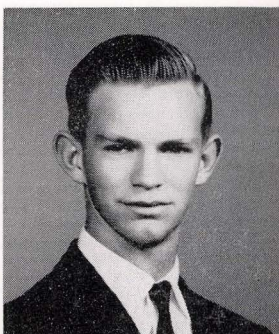
60

KATHY BETTENCOURT
GAA, Drama Club, Sr. Ditch
Day Committee

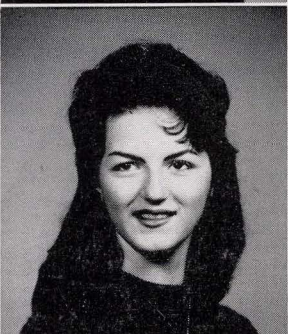


KEN BIANCHINI
Football, Golf, Intramural
Sports, FFA Officer

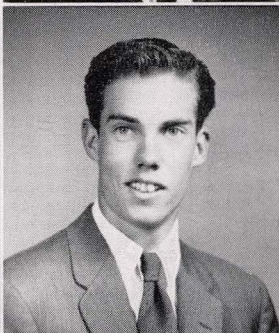
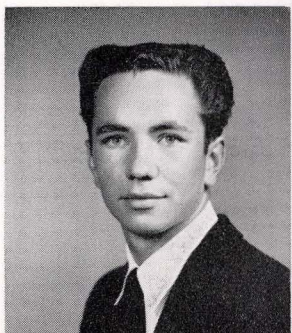
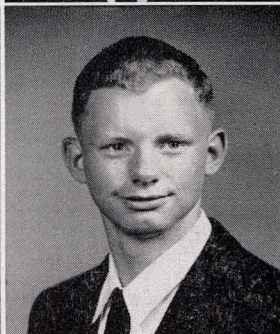
CHARLES BLACK
Intramural Sports, Boys'
League



JOANN BLACKWELL
A Cappella, French Club, Sr.
Breakfast Comm., Girls' Club



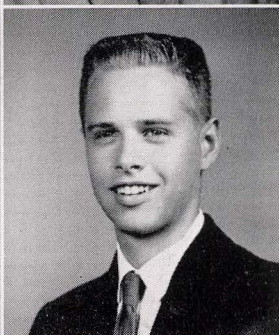
RON BOHLAE
Sr. Class Day Comm., Boys'
League



ROBERT BOHLING
Intramural Sports, French
Club, Sr. Class Day Comm.

JAMES BOWMAN
Boys' League

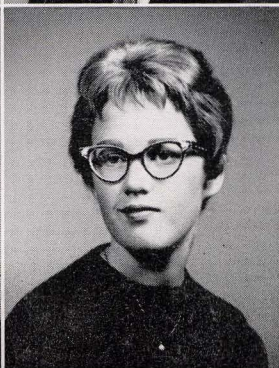
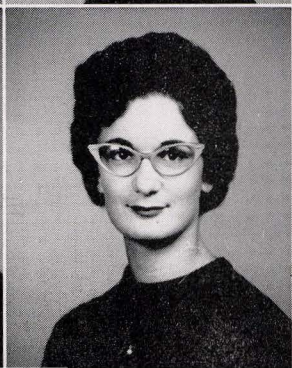
KAREN BRADEN
Carried flags, GAA, Sr.
Ditch Day Comm., Girls'
Club



CAROLYN BRATTIN
Carried ropes, Finance,
GAA, Sr. Ditch Day Comm.

LINDA BRIANS
Pegasus, French Club, Girls'
Club

PAUL BRIANS
CSF, Science Club Officer,
A Cappella, Literary Editor
Pegasus



JACQUELINE BRICK
Class Officer, Honor Society
Officer, Service Club, Copy
Editor Enterprise

DONNA RAE BRUMAGE
CSF, Sr. Banquet Committee,
Girls' Club

PATTI BUCKETT
Carried ropes, GAA, Sr.
Ditch Day Comm., Girls'
Club



ALAN BUDINSKY
Pegasus, French Club, Orch.,
Sr. Class Day Committee



JERILYNN BULTEMAN
Sr. Ball Comm., Girls' Club



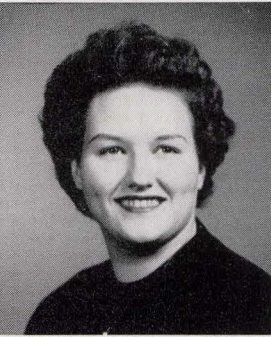
ROY BURCHELL
Track, Basketball, Block P
Club, Latin Club



LINDA BURKE
Majorette, GAA Cabinet, Sr.
Class Day Comm. Chairman

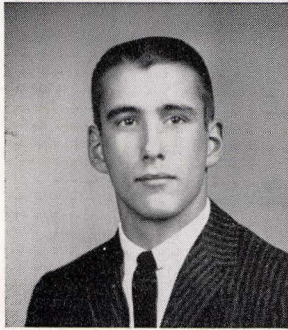


PETE BUSSMANN
Football, Intramural Sports,
FFA, Delegate Assembly



ARTHEL CAKE
Pegasus Editor, Drama Club,
Girls' Club

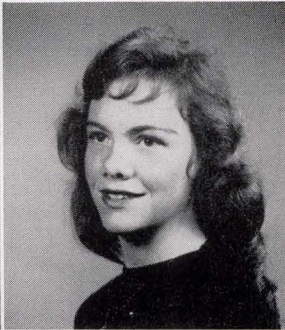
Class



EDWARD CANDAGE
Traffic Court, Safety Comm.,
Sr. Class Day Committee



MARY CANNON
Girls' Club Fashion Show,
Girls' Club



DEANNA CARLSEN
Carried ropes, Drama Club,
Pegasus, Trojan

19

GARY CARLSON
Football, Track, FFA Officer,
Class Officer

ROBERTA CASAROTTI
GAA, Girls' Club Cab., NBL
Judge, Sr. Ball Committee

WILLIAM CASSINA
Track, Swimming, FFA Pres.
Traffic Court



ROBERT CHAMBERS
Boys' League

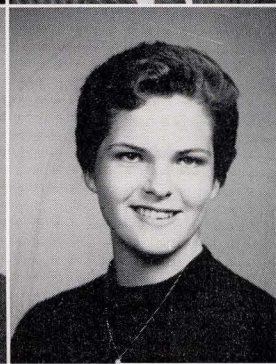
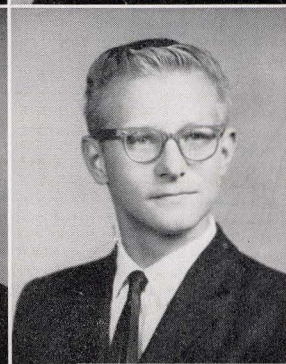
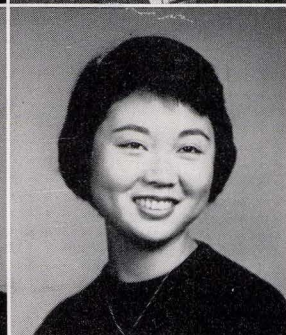
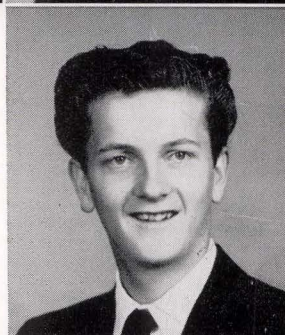
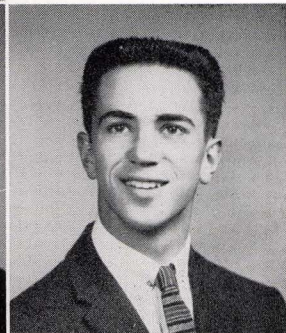
EVELYN CHAN
Service Club Officer, French
Club Officer, Girls' Club
Cabinet, Sr. Play Committee

HERMAN CHAN
Service Club Officer, Sec'y
of Rallies, Sportsmanship
Judge, Sr. Song Committee

MARILYN CHAN
Honor Society Officer, Girls'
Club Cabinet, French Club
Officer, Sr. Play Comm.

DAVID CHANCE
Student Body Pres., Drama
Club, Science Club, Chess
Club

BEVERLY DIANE CHAPMAN
Thespian, Senior Play, Pep
Band Leader, Sr. Baccalaur-
eate Committee





DENNIS CHAPPELLE
Baseball, Basketball, Swimming, Sr. Class Day Comm.



JACQUELINE CLAY
Finance, GAA, Sr. Ditch Day Committee, Girls' Club

BARBARA COLIN
Girls' Club Cab., GAA Pres., Merit Comm., Sr. Ball Committee

ELAINE COLDEWEIH
Song Leader, Service Club, GAA, Enterprise



CAROL COLLINGS
Carried ropes, GAA, Senior Class Day Comm., Girls' Club

JUDY COOPER
Drama Club, French Club, GAA, Sr. Ditch Day Comm.



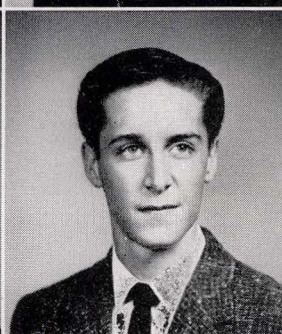
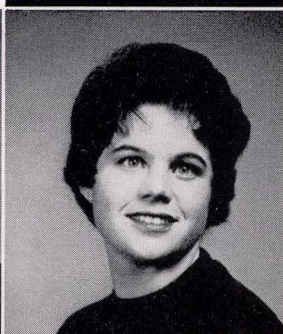
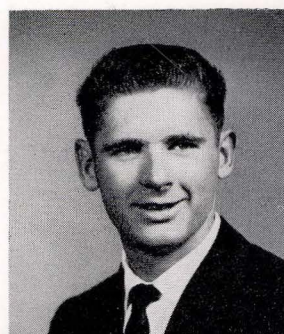
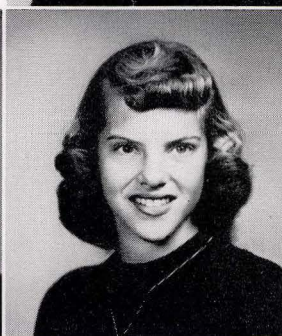
of...

60

SANDRA COPPIN
Pegasus, Future Teachers' Club, Drama Club, Sr. Banquet Committee

JACQUELINE COWART
Majorette, French Club, Sr. Breakfast Comm., Girls' Club

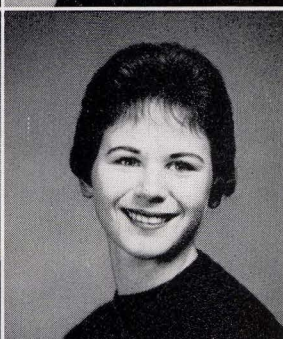
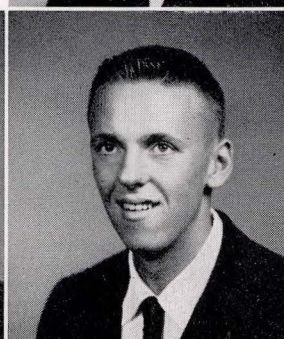
CHARLES CRIST
Intramural Sports, Boys' League



EDWARD DANGERS
Baseball, Football, Service Court Judge, Latin Club

ROSEMARY DINELLI
Carried flags, Carried ropes, Drama Club, Sr. Class Day Committee

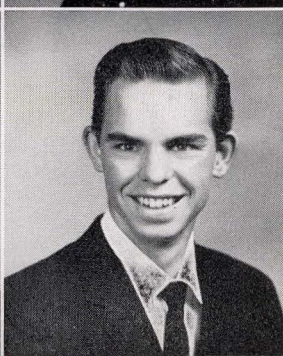
LARRY DIXON
Sr. Class Day Committee, Boys' League



DALE DOWNING
Football, Track, Boys' League Cab., A Cappella

JOHN DRAY
Basketball, Boys' League, Trojan, Intramural Sports

PENNY EBBERT
Song Leader, Sr. Class Day Committee, Girls' Club



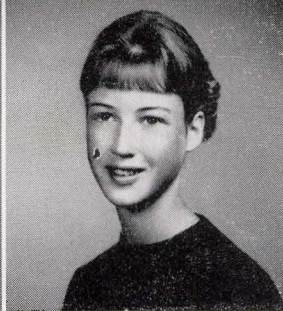
EINER ELBECK
FFA, Sr. Announcement Committee, Boys' League

MARGARET ELPHICK
Song Leader, Cheer Leader, GAA, Sr. Ball Committee

RON EMPEY
Thespian, Drama Club Pres., Sr. Play, Sr. Ditch Day Committee



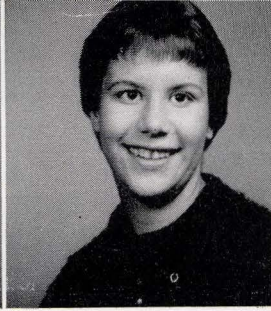
RICHARD EPLER
Boys' League



NANCY EVANS
GAA, Band, Pep Band,
Orchestra



LOUISE FEARN
Carried flags, Carried ropes,
GAA, Sr. Banquet Comm.



JUDY FELIZ
Jr. Gray Lady, Drama Club,
Sr. Play, Sr. Gift Committee



MARCIA FISHER
Girls' Club



RILL FORNEY
FFA, State Farmer, Livestock
Judging Team, Senior
Breakfast Committee

Class



JUDY FUJITA
Carried ropes, Finance,
Sr. Ditch Day Comm., GAA



LARRY FULLER
Boys' League



BETTY GABBERT
Sr. Ditch Day Comm., Girls'
Club

19

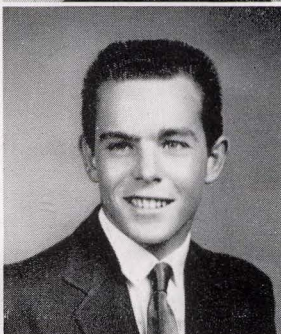
BILL GABBERT
FFA, Boys' League

WILLIAM GEORGESON
Baseball Mgr., Intramural
Sports, Band, Pep Band

WILLIAM GIBBE
Football, Intramural Sports,
FFA, Sr. Breakfast Comm.



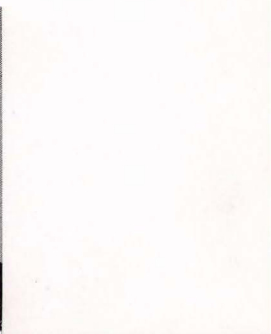
JOHN GILLOGLEY
Intramural Sports, FFA,
Boys' League



ROBERT GILLOGLEY
FFA, Boys' League



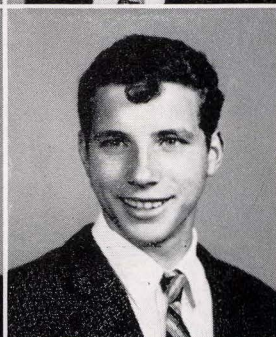
WILBUR GOETSCH
Roost Club Officer, Safety
Comm., Rally Committee
(Trojan Horse), Sr. Class
Day Committee



KEN GOLDBECK
Sr. Ball Comm., Boys'
League

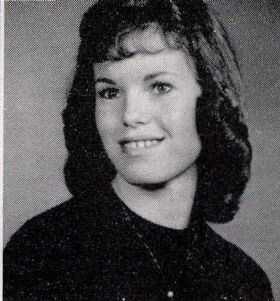
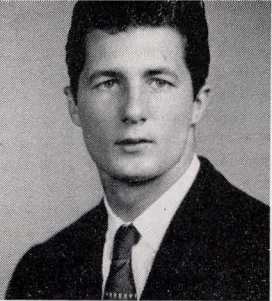


ELISA GONZALES
GAA, Sr. Play Comm., Sr.
Class Day Comm., Girls'
Club



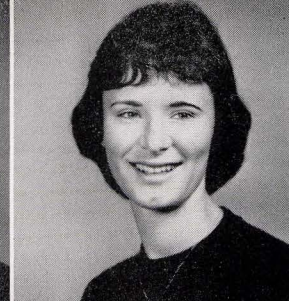
DAN GORDON
Swimming, Noon Hour
Comm., Intramural Sports,
Sr. Banquet Comm.





MILTON GREEN
Drum Major, Band, Pep
Band, Student Announcer

PAULA GROGAN
Carried ropes, Jr. Gray
Lady, Sr. Ditch Day Comm.,
Girls' Club

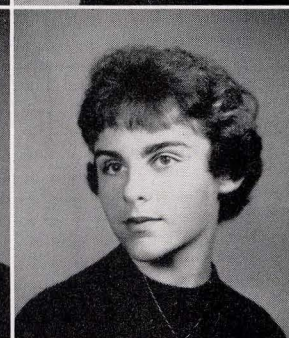


DON GOSSAGE
Football (Most Valuable
Player of Year), Basketball,
Sr. Class Day Committee

ROBERTA GOSSAGE
Song Leader, GAA, Finance
Comm., Sr. Banquet Comm.

EDDIE GROSSI
Boys' League

JOANNE HAHN
CSF, GAA, Latin Club, Sr.
Ball Committee



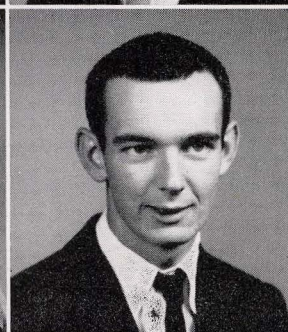
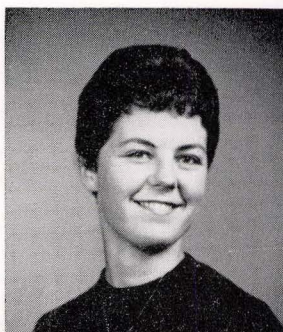
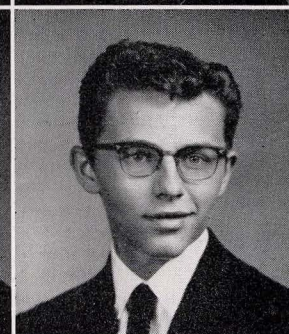
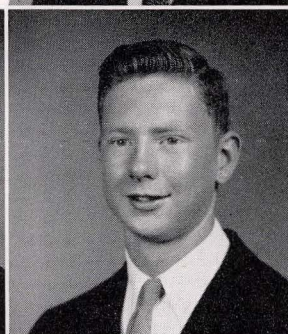
of...

60

GLORIA HALL
Merit Comm., Honor P, Sr.
Ditch Day Comm., GAA

LARRY HALVORSEN
Boys' League

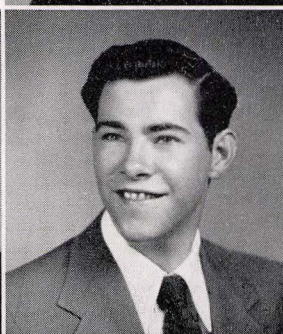
ARNOLD HANSEN
Science Club, Sr. Gift Comm.



SUSAN HANSEN
GAA Cab., Sec'y of Rallies,
Enterprise, Sr. Ball Comm.
Chairman

CAROL HARDY
Girls' Club

BILL HARRELL
A Cappella, Boys' League,
Noon Hour Comm., Rally
Committee



CHARLES HARTLEY
Baseball, Football, Trojan,
Sr. Ball Committee

BILL HAWKINS
Boys' League

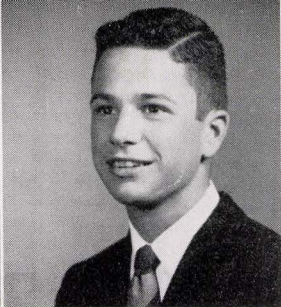
BILL HAYNES
Football, Sr. Ditch Day
Committee, Boys' League



JUDY HENDRIX
Song Leader, Cheer Leader,
GAA, Sr. Ball Committee

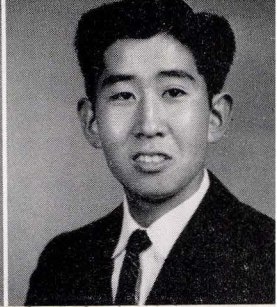
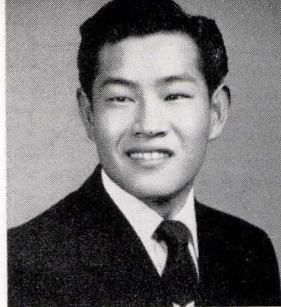
PENNY HINSON
A Cappella, GAA, Honor
Society, Senior Class Day
Committee

JOANNE HOCKEMA
Girls' Club, Carried ropes,
Senior Ball Committee



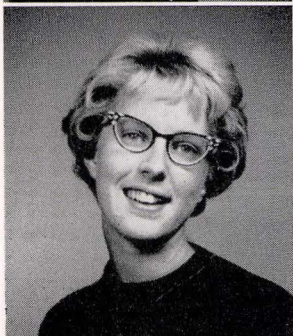
SANDRA HOGUE
Jr. Gray Lady, GAA,
Girls' Club

BARRY HUNT
Service Club President,
Honor Society, A Cappella,
Boys' League



JOHN IMOTO
Track, Latin Club, Senior
Class Day Committee, Boys'
League

CHRIS INAGAWA
Sr. Ditch Day Comm., Boys'
League



NANCY IVARSON
GAA Cab., French Club,
Honor Society Pres., CSF
Life Member

BECKY JACOBSEN
Latin Club, Rally Comm., Sr.
Play Comm., Sr. Ball Comm.

Class

19



RON JACOBSON
Boys' League

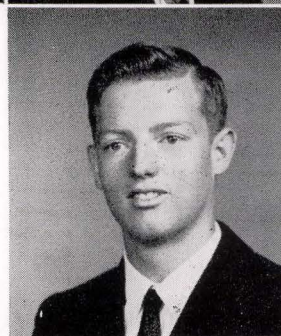
DON JOHANNSEN
Football, Boys' League, Sr.
Breakfast Committee

NANCY JOHNSON
Class Officer, Pegasus, Sr.
Play, CSF Life Member

RONALD JOHNSON
Track Mgr., Radio Club,
Boys' League

TINA JOHNSON
CSF, Future Teachers' Club,
A Cappella, Sr. Banquet
Committee

ROBERT KENDALL
Tennis, Band, Pep Band, Sr.
Banquet Committee



LONNA KIEFER
GAA, A Cappella, Sr. Ditch
Day Committee

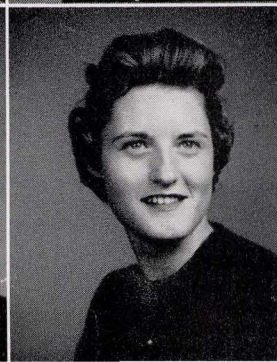
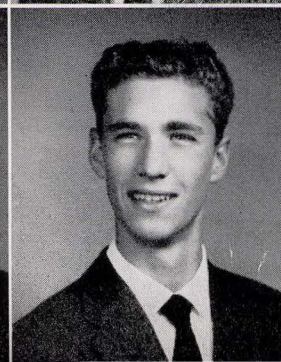
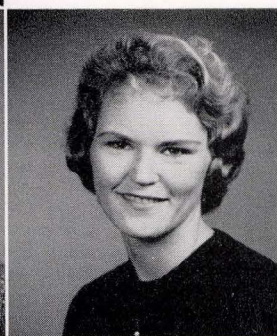
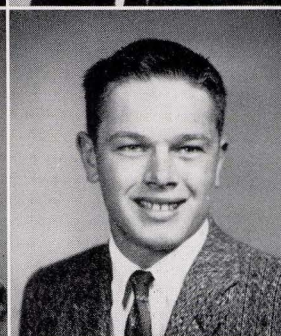
JAMES KING
FFA, Sr. Breakfast Comm.,
Boys' League

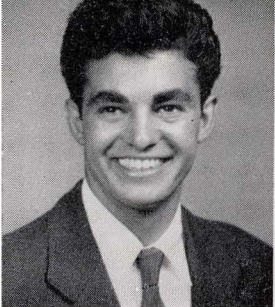
PATRICIA KIRKMAN
Girls' Club

WAYNE KITE
Band, Pep Band, Orchestra,
Boys' League

KIT KNEELAND
Track, FFA, Sr. Ball Comm.,
Boys' League

MARLENE KOSTNER
Jr. Gray Lady, Sr. Breakfast
Committee, Girls' Club





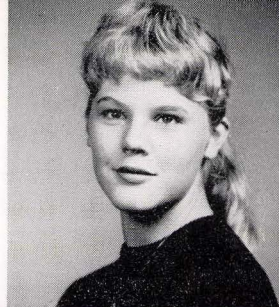
JERRY KRULEVITCH
Basketball, Boys' League



SHARON KYLE
Thespian, Girls' Club, GAA,
Sr. Ball Committee

JACQUELINE LaFOLLETTE
GAA, A Cappella, Girls'
Club

SUSIE ANN LANGE
Honor Society, Band, Orch.,
Sr. Ditch Day Committee



CHARLES LARSEN
Boys' League

JACQUELINE LARSEN
GAA Cab., French Club
Officer, Science Club, CSF
Life Member



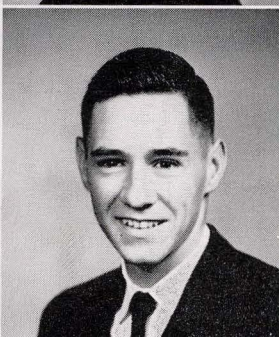
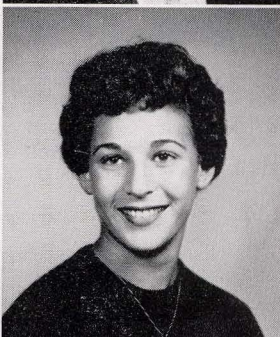
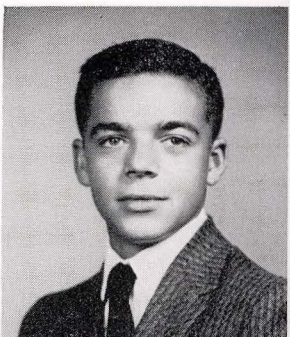
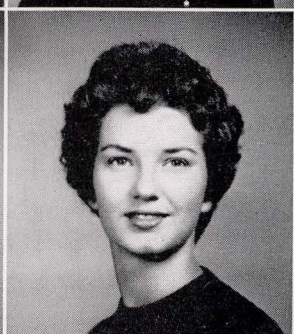
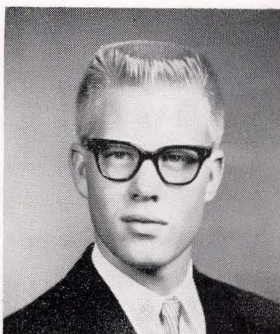
of...

60

JAMES LAUGENSEN
Swimming, Latin Club, Sr.
Ball Comm., Pegasus

ARLENE LAWS
Carried ropes, GAA, Girls'
Club, Sr. Ditch Day Comm.

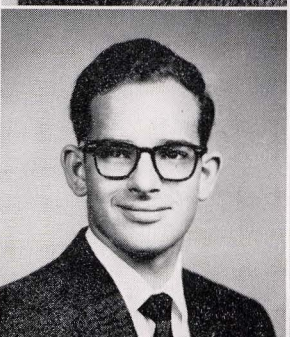
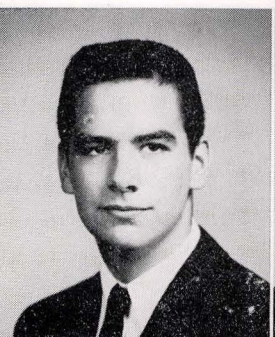
CLARA LEDBETTER
GAA, French Club, Sr. Play
Comm., Sr. Ditch Day Comm.



GORDON LEMOS
FFA, Sr. Ditch Day Comm.,
Boys' League

JUDY LERER
Cheer Leader, Class Officer,
CSF Officer, Citizenship
Secretary

DOUGLAS LINCH
Pep Band, Orchestra, Safety
Comm., Sr. Play Committee



DON LINGLE
Boys' League

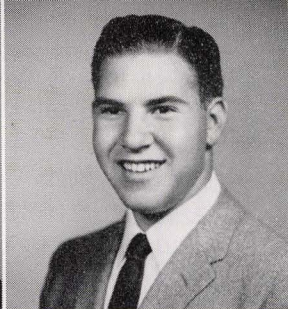
GERALD LOMBARDI
Intramural Basketball, Rally
Comm., A Cappella, Traffic
Court

PATRICIA LOMBARDI
Carried ropes, GAA, CSF
Life Member, Sr. Ball Comm.

STEPHEN LUCE
Swimming, Science Club,
Band, Boys' League

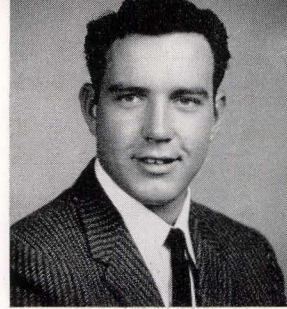
ROBERT LUCHINI
Football, Track, Intramural
Sports, Boys' League

JAMES LUTZ
Rally Comm., Boys' League
Sr. Play Committee



KARREN LUTZ
GAA, Pegasus, CSF Life
Member, Honor Society
Officer

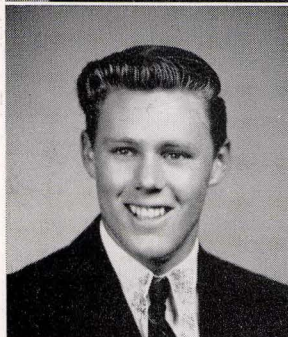
NATHAN LUTZ
French Club, Honor Society,
CSF, Sr. Play Committee



GARY LYMAN
Football, Track, Block P,
Delegate Assembly



JAMES LYON
Boys' League

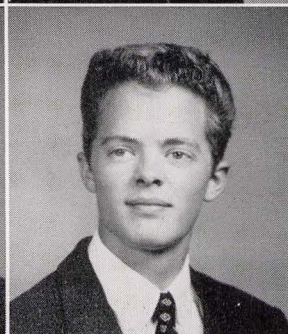


ROBERT MAACK
Basketball, Tennis, Boys'
League, FFA

KATHY MacDONALD
Thespian, CSF Life Member,
Orchestra, GAA

Class

19



DONALD MacKENZIE
Golf, Traffic Court, Honor
Society President, CSF Life
Member

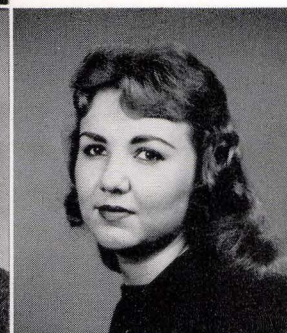
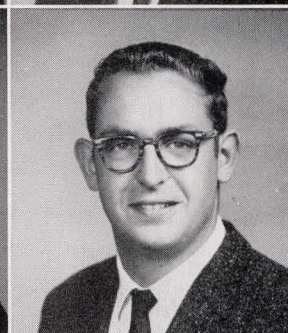
ROBERT MADISON
Intramural Basketball,
Safety Comm., Traffic
Court, Sr. Ball Comm.

JAMES MAESTRETTI
Golf, A Cappella, Boys'
League

JOAN MAFFIA
GAA, Sr. Banquet Comm.,
Girls' Club

STANLEY MAGGIORA
Track, Enterprise, Sr. Ball
Comm., Boys' League

PATRICIA MARTIN
Carried ropes, GAA, Girls'
Club



PAUL MARTIN
Football, FFA, Honor P, Sr.
Ball Committee

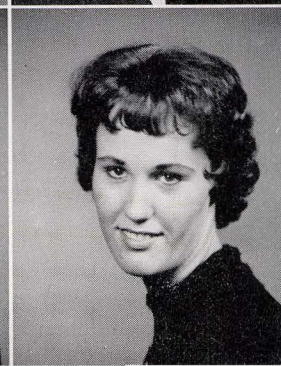
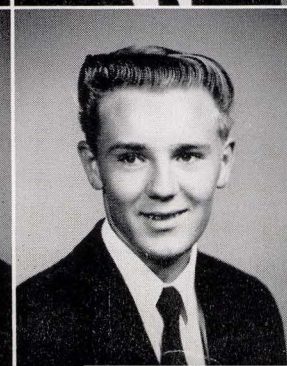
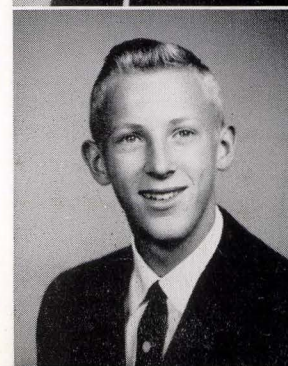
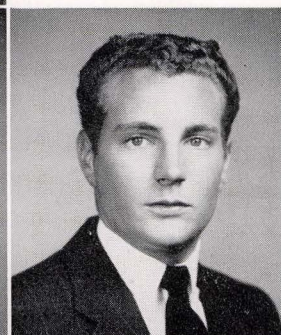
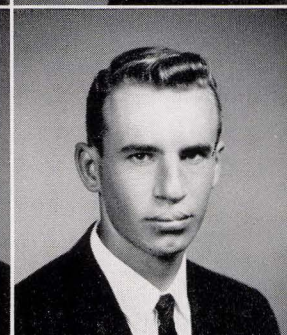
TOM MARTIN
Football, FFA, Boys' League,
Sr. Breakfast Committee

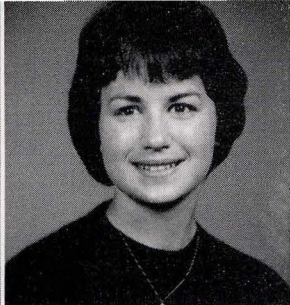
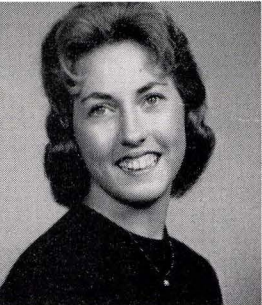
FRANK MATTERI
Swimming, Boys' League,
FFA, Intramural Sports

HAROLD MATZEN
Sr. Ditch Day Comm., Boys'
League

ED McGAULEY
Thespian, Drama Club, Sr.
Play Comm., Boys' League

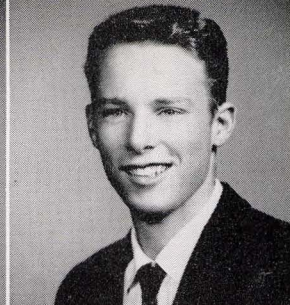
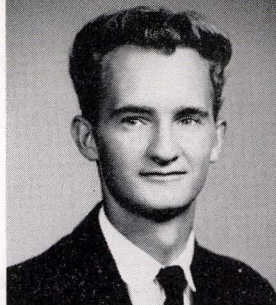
CAROLE McHENRY
GAA, A Cappella, Sr. Class
Day Comm., Rally Comm.





ALVIN MILHAM
Track, Trojanza, Senior Song
Committee, A Cappella

JEFFERY MILLERICK
Football Mgr., Intramural
Sports, Sr. Ball Comm.,
Boys' League

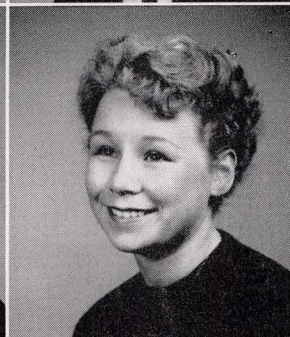
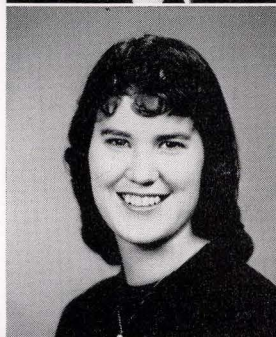


NOREEN McINTOSH
Carried ropes, Sr. Banquet
Comm., GAA, Girls' Club

ARLEEN MEADOWS
Girls' Club Cab., Sr. Ball
Comm., CSF, Honor Society
Officer

SANDRA MILLERICK
Carried ropes, GAA, Sr.
Ditch Day Comm., Girls'
Club

DONNA MINTON
Thespian, Honor Society,
Delegate Assembly, Orch.



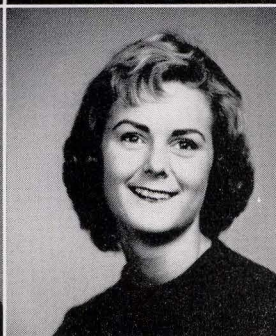
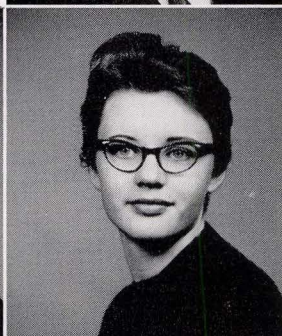
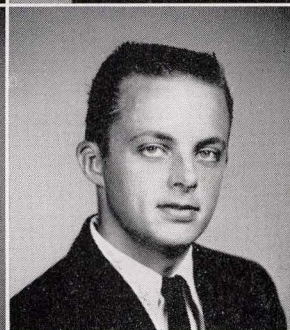
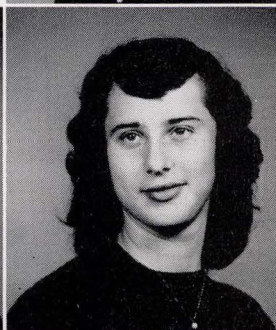
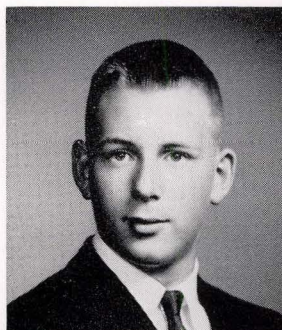
of...

60

THEODOR MOGEL
School Electrician, Science
Club, Noon Hour Activities,
Football

JUDY MANNWIELER MOLLER
GAA, Girls' Club, Sr. Ball
Committee

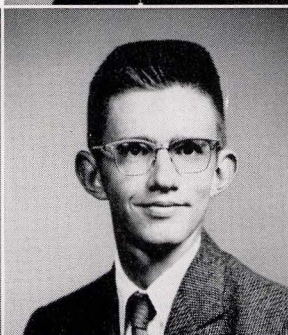
THOMAS MOLLER
Football, FFA, Boys' League,
Intramural Sports



CAROL MONTEDEOCA
Carried ropes, Girls' Club,
Sr. Banquet Committee

MAUREEN MURPHY
Thespian, CSF Life Member,
Pegasus Business Manager,
Sr. Publicity Committee

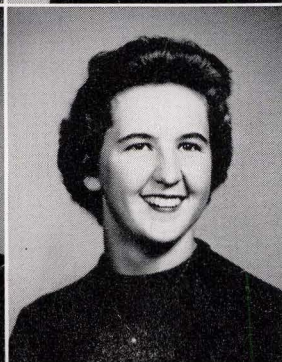
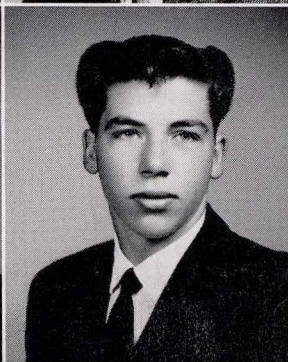
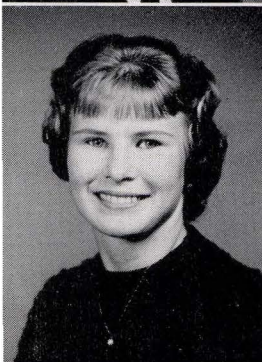
JEANETTE MYERS
Drama Club, Girls' Club



STEVEN NELSON
Sr. Breakfast Comm., Boys'
League

RHOLAN NELSON
Boys' League

KAREN NEWMAN
Song Leader, Carried ropes,
Honor Society, Sr. Banquet
Committee



KATHY NIELSEN
GAA, Drama Club, Sr. Ditch
Day Comm., Girls' Club

BOB NISSEN
Intramural Sports, Boys'
League, A Cappella

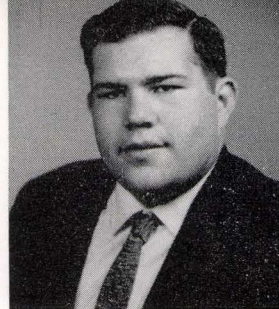
LORRAINE NISSEN
Carried ropes, Drama Club,
Junior Gray Lady, Senior
Baccalaureate Committee



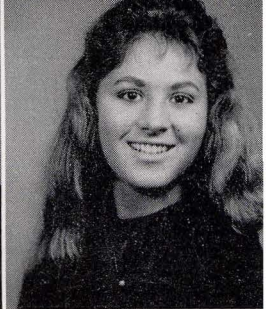
JOHN OLANDER
Football, Baseball, Class
Pres., Sr. Class Day Comm.



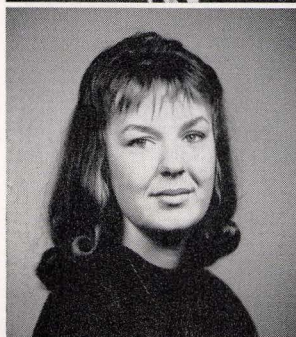
STEVE OPSOMER
Football, Swimming, Boys'
League, Sr. Ditch Day
Comm.



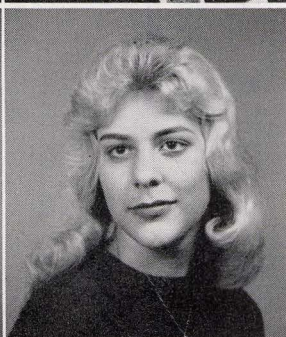
GENE OWENS
Science Club, Radio Club,
Sr. Banquet Comm., Boys'
League



VERA OWINGS
Carried ropes, Girls' Club
Honor Society, Sr. Ball
Committee

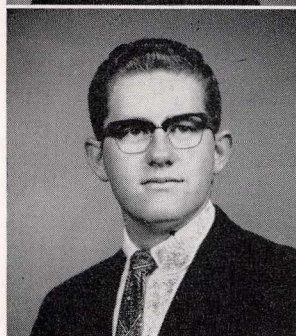


KATHY PARIS
Girls' Club, Sr. Ditch Day
Committee

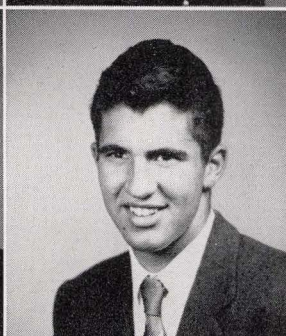


ELVERA CHRISTENA PARKER
Sr. Gift Comm., Trojan,
Future Teachers' Club,
Thespian President

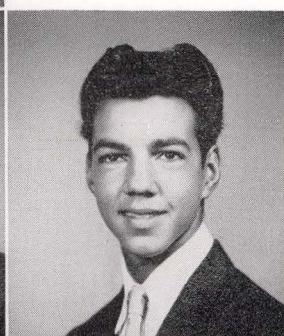
Class



KEN PARKER
Pegasus, Science Club, Sr.
Play Comm., Drama Club



JOHN PAULA
FFA, Sr. Breakfast Comm.,
Boys' League



NELS PAULSON
Boys' League

19

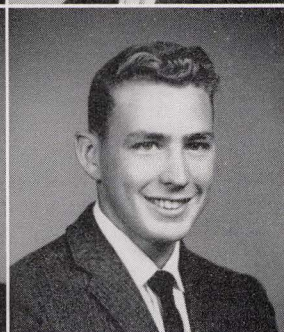
EDWARD PECK
Sr. Class Day Comm., Boys'
League

PATRICK PEEBLES
Trojan Editor, Class Pres.,
CSF Life Member, National
Merit Scholarship Finalist

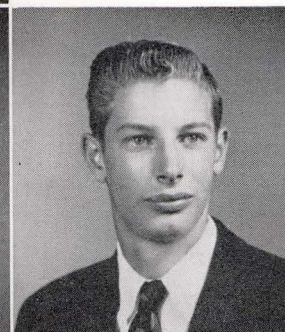
MEL PENDLETON
Basketball, Boys' League,
Sr. Class Day Committee



MARIA VICTORIA PEREZ
Student Body Vice-Pres.,
Drama Club, GAA, Sr. Ball
Committee



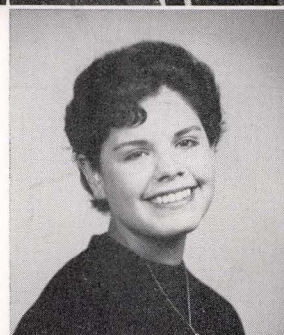
PEGGY PERRY
Carried ropes, GAA, Sr. Play
Comm., Sr. Ball Committee



LINDA PETERS
Jr. Gray Lady, Drama Club,
Sr. Baccalaureate Comm.,
Pegasus



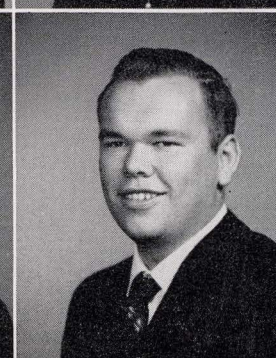
SANDRA PETERS
GAA, A Cappella, Sr. Class
Day Comm., Girls' Club

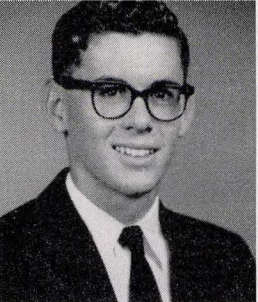


CHARLES PETERSEN
Football, Intramural Sports,
FFA, Boys' League



DELBERT PETERSEN
FFA State Farmer, Pep Band
Co-Director, FFA Judging,
Sr. Banquet Committee





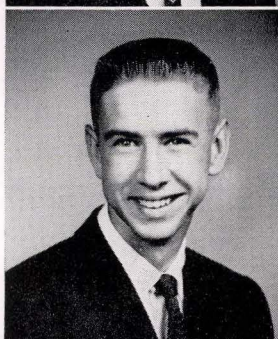
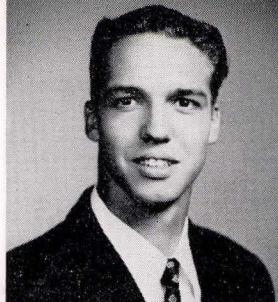
GARY PETERSEN
Baseball, Intramural Sports,
FFA, Sr. Ditch Day Comm.



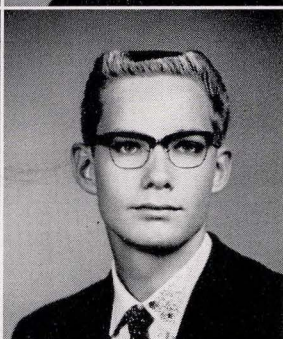
PATRICIA PETERSEN
Carried ropes, GAA, Sr.
Class Day Comm., Girls'
Club

WAYNE PETERSEN
Traffic Comm., Band, Pap
Band, Orchestra

SANDY PETROV
Sr. Ditch Day Comm., Girls'
Club



BOB PHILLIPS
Track, Sr. Play Comm., Boys'
League



WILLIAM PHILLIPS
Sr. Ditch Day Comm., Boys'
League

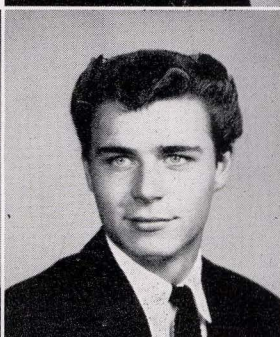
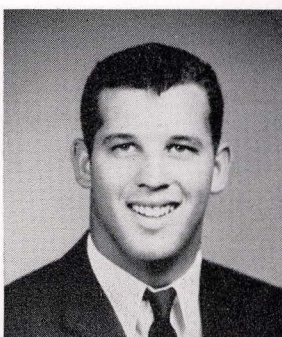
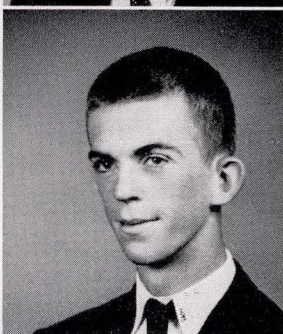
of...

60

JOAN PIAZZA
Carried ropes, Girls' Club
Fashion Show, Girls' Club,
Delegate Assembly

PAMELA PORRITT
Pap Band, Honor Society,
Sr. Play, Pegasus

LARRY POTTER
Finance, Boys' League



EDGAR POTTS
Football, Drama Club, Boys'
League, Sr. Breakfast Comm.

RALPH POWERS
Boys' League

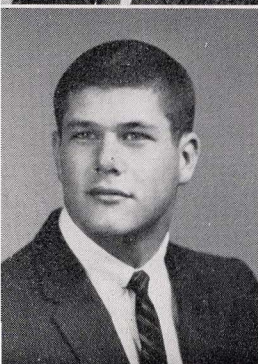
LEROY POZZI
FFA, Intramural Sports, Sr.
Banquet Comm., Boys'
League



JOHN POZZI
Intramural Sports, Boys'
League, FFA, Sr. Banquet
Committee

RUSH PUTNAM
Basketball, Service Club,
Drama Club, Safety Comm.

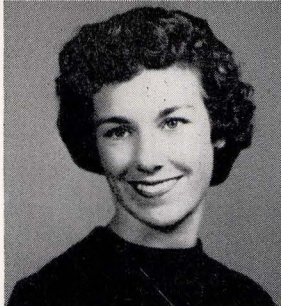
BONNIE RABELLO
Majorette, A Cappella, Sr.
Play Comm., Sr. Class Day
Committee



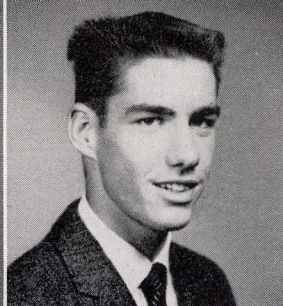
JOSEPH RAYMOND RAFFO
Football, Track, Pres. Boys'
League, Safety Comm. Pres.

DENNIS RAGAR
Basketball (Most Valuable
Player of Year), Football,
Baseball, Boys' League Cab.

BEATRICE RASMUSSEN
Honor Society, French Club,
Foreign Exchange Student
Comm., Sr. Ball Committee



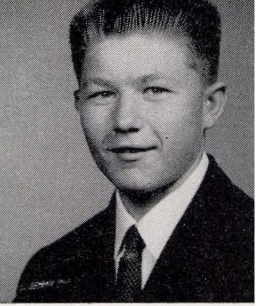
CONNIE REVARD
Honor P, Enterprise, Band,
GAA



JOHN RICHARDS
Football, Basketball,
Tennis, Delegate Assembly



AILEEN RIEBLI
GAA, Girls' Club Fashion
Show, Girls' Club



FRANK RIEBLI
FFA, Boys' League



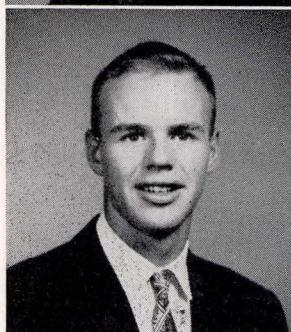
JILL RIEBLI
Student Body Cab., NBL
Delegate, GAA, Sr. Class
Day Committee



NANCY RIEBLI
GAA, Latin Club, Senior
Ditch Day Committee
Girls' Club

Class

19



WAYNE RITZ
Football, Boys' League,
Intramural Basketball



LEE ROGAN
Rally Comm. (Trojan Horse),
Sr. Breakfast Comm., Boys'
League

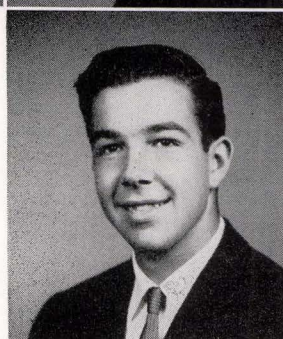


ROSEMARY ROLANDER
Carried ropes, Sr. Banquet
Comm., Girls' Club

HANS RIEDEL
Science Club, Pegasus

PATRICIA RINALDO
Finance, Girls' Club

JOANN RITKO
Honor P, Girls' Club Welfare
Comm., Sr. Play Comm., Sr.
Breakfast Comm. Chairman



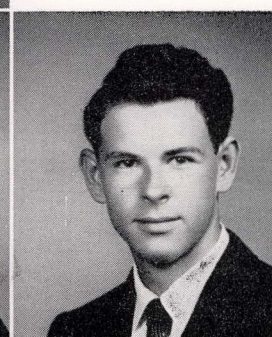
JUDITH ROSE
Majorette, Cheer Leader,
Carried ropes, Sr. Class Day
Committee



PATRICIA ROSE
Carried ropes, Finance, GAA,
Sr. Banquet Committee



JERRY ROSENTHAL
Band, Pep Band, Orchestra,
Boys' League



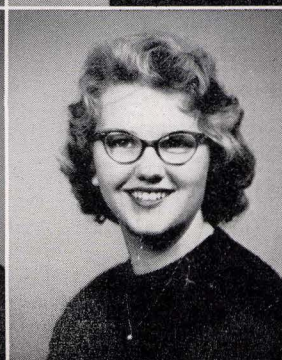
MARY ROSS
GAA, Sr. Ditch Day Comm.,
Girls' Club



SHIRLEY ROSS
Sr. Baccalaureate Comm.,
A Cappella, Drama Club,
Girls' Club

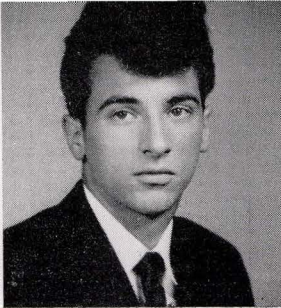


ANTOINETTE RUIZ
GAA, Merit Comm., Senior
Announcement Comm. Ch.,
Sportsmanship Judge





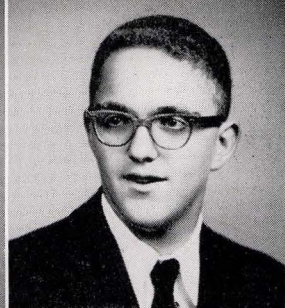
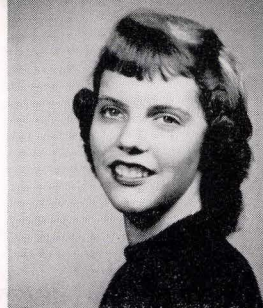
MELVIN RUIZ
Tennis Capt., Honor Society,
Enterprise Ad Mgr., Service
Club Pres.,



BILL SANTOS
Basketball, Intramural
Sports, Boys' League

SHARON SAUNDERS
Carried ropes, GAA,
Girls' Club

ROBERT SCHARF
Boys' League



of...

60

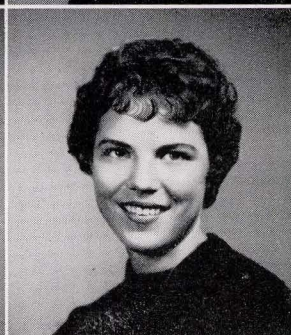
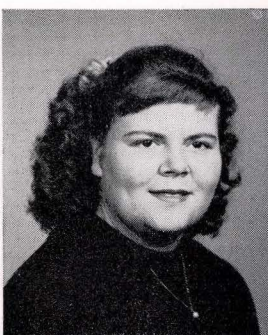
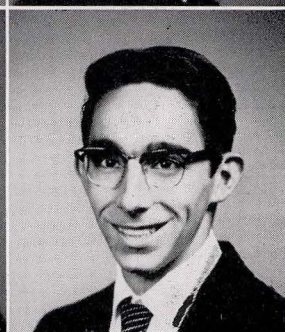
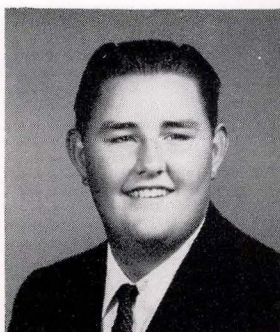
ALAN SCOTT
Golf, Sr. Class Day Comm.,
Boys' League

JANICE SCOTT
Girls' Club

GILBERT SCOVILL
Track, Boys' League

ROBERT SCHNEIDER
Swimming, Science Club,
Radio Club Pres., Boys'
League

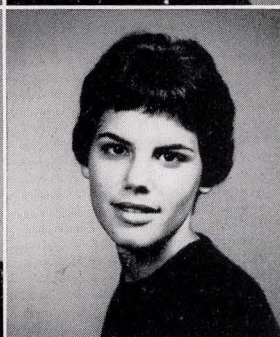
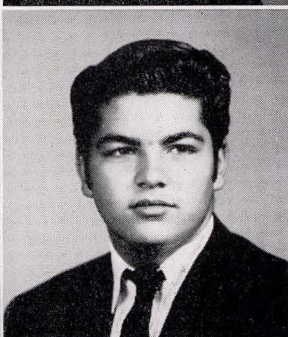
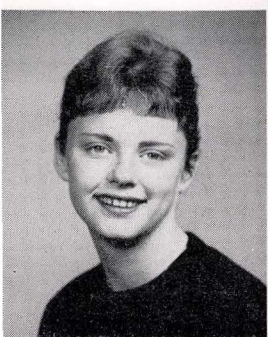
SHIRLEY SCHOOLER
Girls' Club



PATRICIA SCROGGINS
Girls' Club

PAM SHULTZ
GAA, Class Officer, Student
Body Officer, Sr. Ditch Day
Committee

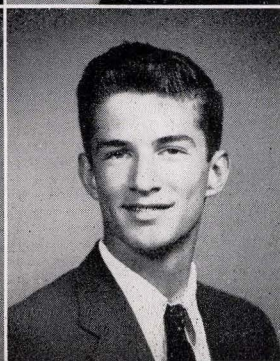
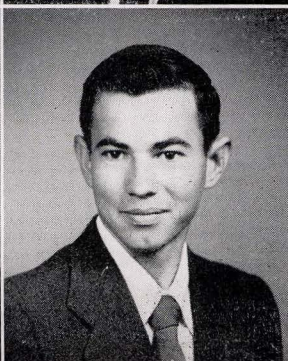
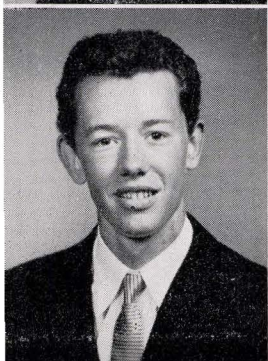
TAMARA SHULTZ
GAA, Sr. Ditch Day Comm.,
Girls' Club



PATRICIA SIKORSKI
GAA, Drama Club, Sr. Ball
Comm., Girls' Club

FRANK SILVA
Swimming, FFA, Sr. Ditch
Day Comm., Boys' League

GAIL SILVA
Delegate Assembly, Honor
Society, Enterprise, GAA



NEVAL SKAGGS
Intramural Sports, Boys'
League

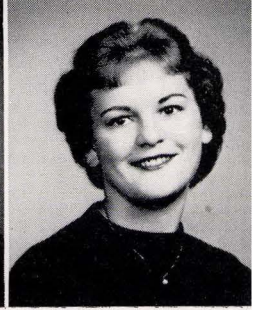
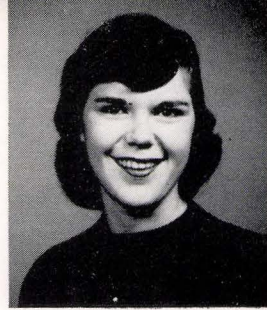
LLEWELLYN SKIDMORE
Noon Hour Comm., Boys'
League

BILL SLACK
Radio Club, Sr. Ditch Day
Comm., Boys' League



SHARON SMILEY
Honor Society Officer,
Service Club Officer, Class
Officer, Girls' Club Cabinet

ESTHER SMITH
CSF Life Member, Drama
Club, Sr. Banquet Comm.



BEVERLY SMITHERS
Sr. Banquet Comm.,
Girls' Club

SANDRA SNYDER
Sr. Ditch Day Comm.,
Girls' Club

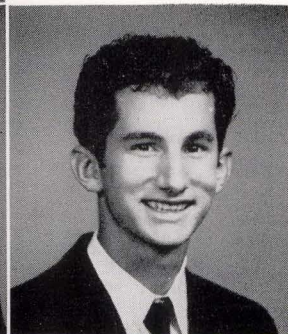
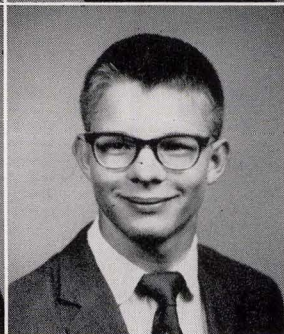


JERRIE SPEER
Sr. Ditch Day Comm.,
Girls' Club

BETTY SPRAGUE
Girls' Club

Class

19



GEORGIA SPRAGUE
Sr. Baccalaureate Comm.,
Girls' Club

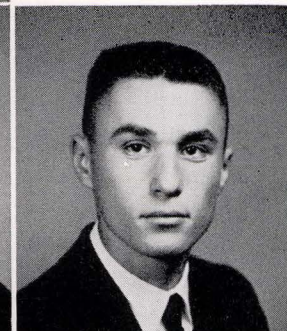
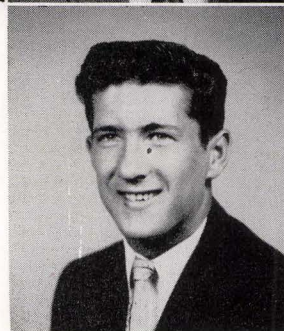
ALLEN STANSBURY
Tennis, Science Club, Radio
Club, Sr. Class Day Comm.

DENNIS STEPHENSON
Intramural Sports, Sr. Ditch
Day Comm., Boys' League

HAROLD STICE
Basketball, Track, Safety
Comm., Sr. Class Day
Committee

PATRICIA STIEFER
Transfer, Drama Club, Sr.
Class Day Comm., Girls'
Club

LAWRENCE TONY STOER
Sr. Ditch Day Comm.,
Boys' League



ELIZABETH STONITSCH
CSF Officer, Class Officer,
Drama Club, Sr. Baccalaureate Comm.

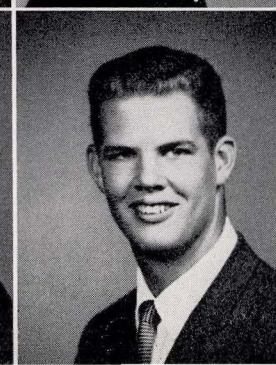
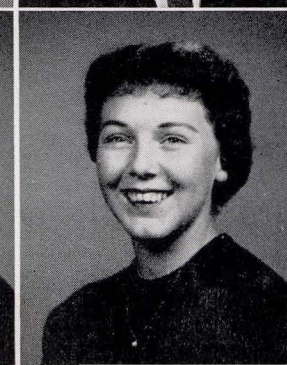
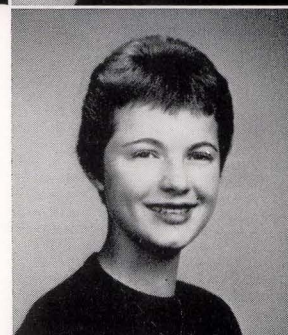
RICHARD STOUT
Football, Swimming, Intramural Sports, Boys' League Cabinet

BARBARA STURTZ
Student Body Officer, Girls' Club Cab., Enterprise, Sr. Ball Committee

COLLEEN SUDEN
Carried ropes, GAA, Sr.
Play Comm., Girls' Club

MARGERY SWAN
Honor Society, GAA, Sr.
Play, Sr. Class Day Comm.

TIM TALAMANTES
Football, Block P, Sr. Ball
Comm., Boys' League



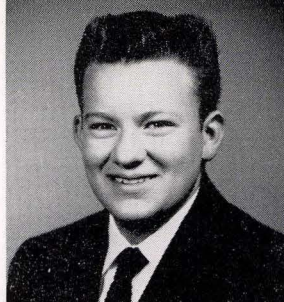


HARRIETT TANNEHILL
Carried ropes, GAA, Sr.
Banquet Comm., Girls' Club

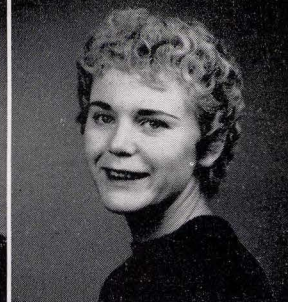


DONNA TAPIAN
Sr. Ditch Day Comm.,
Girls' Club

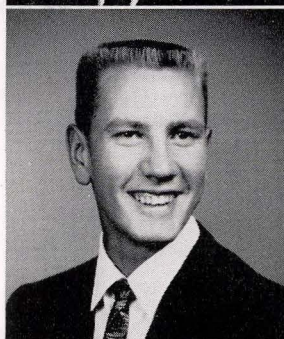
BURL TAYLOR
Intramural Sports,
Boys' League



MARY TENBROOK
Sr. Ditch Day Comm.,
Girls' Club



JAMES THIESSEN
Boys' League



CHARI THOMAS
GAA, A Cappella, Rally
Comm., Sr. Class Day
Committee



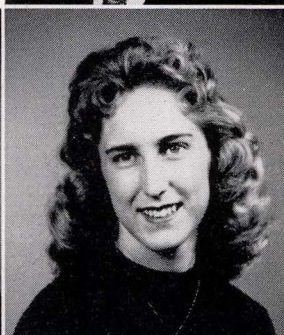
of...

60

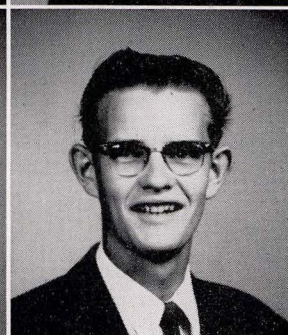
LINDA THOMPSON
Science Club, GAA, Sr. Play
Comm., Sr. Banquet Comm.



MARILYN THOMPSON
Honor Society, GAA, Girls'
Club Cabinet, Chairman
Senior Song Comm.



JONATHAN TIBBETS
Sr. Play Comm., Sr. Ditch
Day Comm., Boys' League



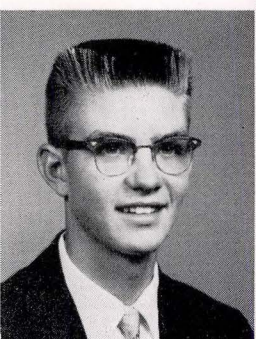
WILLIAM TINGLEY
Science Club, Safety Comm.,
Sr. Play Comm., Sr. Class
Day Comm.



WALTER TOGNALDA
Boys' League



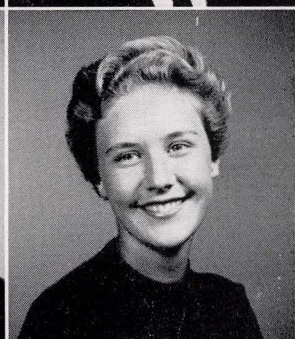
STEVEN TRENAM
Basketball, Tennis, Trojan,
Boys' League



WILLIAM TRENAM
Baseball, Intramural Sports,
Boys' League Cabinet, Sr.
Class Day Comm.



JOAN TUCKER
A Cappella, Drama Club,
Enterprise, Sr. Banquet
Committee



MARALEE TURPIN
A Cappella, GAA, Sr.
Ditch Day Comm., Girls'
Club



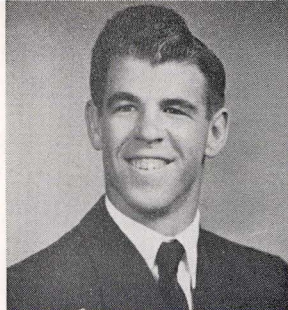
CAROLE UYEDA
Service Club Court, Class
Officer, CSF Life Member,
GAA Cabinet



CAROL VAN BEBBER
Enterprise Editor, Service
Club Pres., Class Officer,
GAA Cabinet



VELMA VERONDA
Pegasus Short Story Editor,
Pep Band, CSF, Chairman
Sr. Banquet Comm.



FLOYD VOLKER
Football, Track, Sr. Class
Day Comm., Boys' League



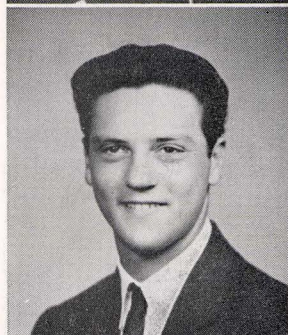
LUCILLE VON BARGEN
Girls' Club



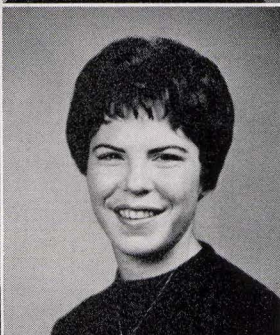
FLORENCE WACKER
Carried ropes, Girls' Club



GLORIA WELGAN
Transfer, Girls' Club



GLENN WELLMAN
Football, Baseball, Track,
Sr. Ditch Day Comm.



JUDY WENGEN
GAA, A Cappella, Sr. Class
Day Comm., Girls' Club

Class

19



RICHARD WHALLEY
Basketball, Tennis, CSF,
Delegate Assembly



JANE WHEELER
Sr. Ditch Day Comm.,
Girls' Club



BARBARA WHITLEY
GAA, Welfare Comm., Sr.
Ditch Day Comm., Girls'
Club

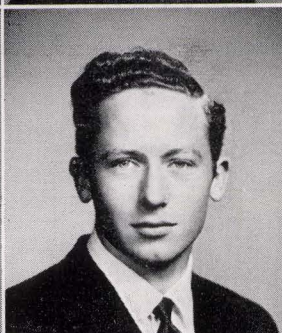
DIANNE WILFERT
Finance Comm., Future
Teachers' Club, Sr. Play
Comm., Sr. Breakfast Comm.

DAVID WILKES
FFA, Sr. Ditch Day Comm.,
Boys' League

ART WILLIAMS
FFA, Intramural Sports,
Boys' League



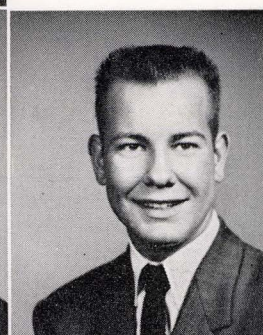
JANEEN WILLIAMS
Girls' Club



MARJORIE WINDRICK
Carried ropes, Enterprise,
GAA, Sr. Ball Comm.



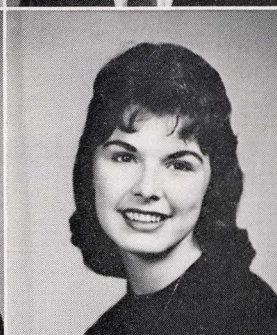
MAX WINEBRINNER
Boys' League



SANDRA WINTER
Carried ropes, GAA, Sr.
Ditch Day Comm., Girls'
Club



ROGER WITSCH
Football, Track, Intramural
Sports, Boys' League



MARY WORDEN
Transfer, Girls' Club





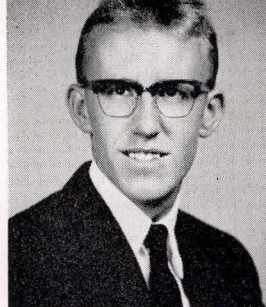
SHARON WRIGHT
Pegasus, Drama Club,
Sr. Baccalaureate Comm.,
Girls' Club



JOHN YOUNG
Football, Sr. Class Day
Comm., Boys' League

CHARLES YOUNG
Band, Choir, Sr. Ditch
Day Comm., Boys' League

RICHARD BROWN
Transfer, Boys' League



GENO DINELLI
F.F.A., Boys' League



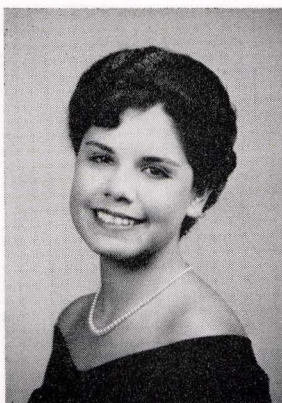
SONYA WHITTEN
Transfer, G.A.A., Sr. Ball
Comm., Girls' Club



KEN WILSON
Transfer, Boys' League

of...

60



MARIA VICTORIA PEREZ OROPEZA
Student Body Vice-President,
G.A.A., Drama Club,
Senior Ball Committee

Exchange Student

One page is not enough to express my feelings towards the United States. From the 20th of August of 1959, day of my departure, to the 21st of the same month, my life changed completely. I found myself in New York, a wonderful city with its huge, cold buildings, and a few hours later, in Petaluma, a small and friendly town.

The first days at school I found myself confused, but immediately, with the help of everyone, I felt at home. At school I became very interested in the methods of teaching and I kept comparing them with those of my schools at home. I was very interested also in my subjects; history, senior problems, and art were the ones I liked the best. I especially enjoyed learning about the United States Government and the Constitution. I enjoyed very much the school activities and especially being a member of the Student Body Cabinet.

Some things I'll never forget are my speeches—talking to different groups was a wonderful experience, especially seeing how interested people are to know something about other countries and other people. To me that is one of the most interesting parts of the American Field Service program, since it leads us to a better understanding.

It was wonderful to be here, and now I would like to thank first of all my American family that has been so wonderful to me; Mrs. Swanson, who took so much care of my speeches; Miss Duggan, who, every minute, was ready to help me; the Girls' Club for giving me the senior sweater that I wanted so much, and the Honor Society for inviting me to their banquet which was a real honor for me. I really should thank everyone I know. The only thing I can say is thank you for giving me the opportunity to know your country and your people.

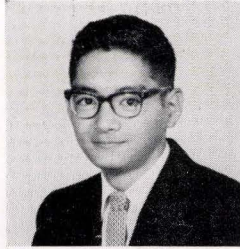
Remember When . . .



1—Bino twins. 2—Susie Hansen in high society. 3—Lynn Abbey lived it up. 4—Tory Monticello. 5—These kids panicked the whole 8th grade. 6—Mikel Devine, Tom Baker, Bill Tingley . . . and where's Winton? 7—Gail Silva had another boy in her life. 8—Kathy Pogue, glamour girl. 9—Bobbie Gossage had another love. 10—Winton Baker found he was unincorporated. 11—Liz Goltz. 12—That lazy week-end at Barry's. 13—These kids went to Cotati "Tech." 14—We don't smoke, and we don't drink, and we don't go with the boys who do.



Gloria Neilsen
Vice-President



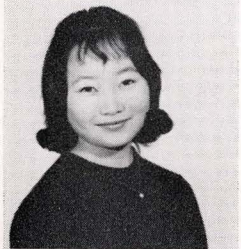
DENNIS FUJITA
Fall President



SHELLEY BARLAS
Spring President



Laraine Hruby
Vice-President



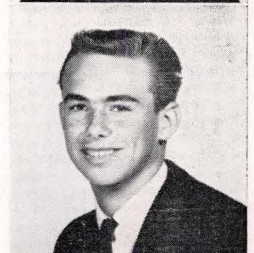
Mary Kameoka
Secretary-Treas.



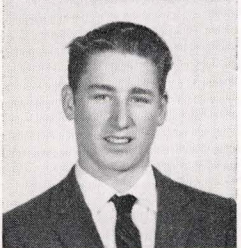
Cheryl Handy
Secretary-Treas.



Larry Ostrom
Cabinet
Representative



Chuck Williams
Boys' League
Representative



Bill Symons
Boys' League
Representative



Beverly Bragga
Girls' Club
Representative



Joyce Yoshioka
Girls' Club
Representative



Mikel Devine
Cabinet
Representative



Dennis Fujita
Cabinet
Representative

*We were
elected...*

1961

Junior Class Officers



MISS ALETHA OLMSTED
Junior Class Advisor



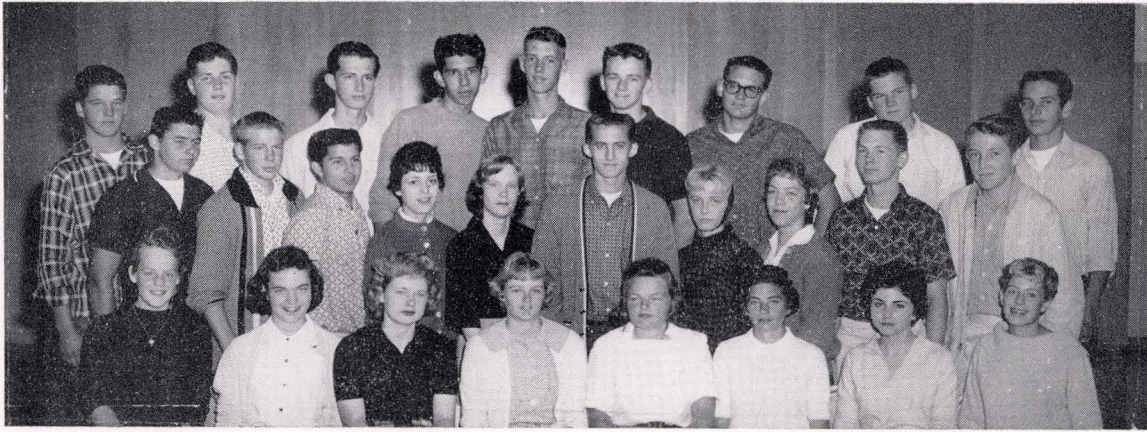
Front row (left to right): Karen Petersen, Carol Owen, Cheryl Handy, Michelle Zaccagna, Helen Petersen, Shirley Kucksdorf, Winnie Armstrong. Second row: Richard Day, Steve Dorenfeld, Barbara Johnson, Bernice Turney, Sheila Fishman, Marion Gilmore, Jean Uyeda, Mahlon Davenport, Paul Schimpf. Third row: John Chesnut, Jim Stone, Gary Jenkins, Charles Garrity, Craig Holmes, Stephen O'Bryan, Richard Maddalena, Richard Romelli, Jim Phillips, Al Coppin.



Front row (left to right): Florrie Peebles, Jolene Barboni, Verna Webb, Connie McCormick, Donna Pierini, Barbara Herman, Ellen Poteet. Second row: Dan McGrew, Barbara Watson, Gloria Neilsen, Diane Norman, Janice Ruiz, Karen Moyer, Carol Irwin, Ron Rudolph, Terry Byrd. Third row: John Forwood, Carl Collard, Clinton Gow, Ken Lentz, Bill Phillips, Chuck Williams, Gene Bino, Jim Wilson, Ken Corippo, Mike Parsons.



Front row (left to right): Sharon Burnside, Helen Hogle, Diane Mitchell, Marcia Mellberg, Marie Hummel, Jean Huggard, Helen Linch. Second row: Russ Strubeck, John Lemos, Richard Steger, Georgeann Salisbury, Judy Barboni, Arnold Rodgers, David Pence, David Brown. Third row: Don Forbes, Ken Otani, Mike Opsomer, Roy King, Paul Nielsen, Joe Long, Gary Jones, Eugene Corzine, Allan Brody.



Front row (left to right): Veronica Maffia, Harriet Smith, Bonnie Smith, Dolores Moller, Mary Hansen, Carol Bino, Rita Logan, Shelley Barlas. Second row: Richard Cole, Fred Arfsten, Jim Forwood, Lolita Goldbeck, Joanne O'Brien, Bill Meadows, Vivian Michael, Ruth Burkhart, Richard Bolton, Larry Statan. Third row: Bob Potts, Richard Byrd, Rafael Rivera, Steve Parsons, Ken Kram, Mike Shipley, Mike Potter, Bill Larsen, Richard Mackey.



Front row (left to right): Marlene Ruzsicska, Elaine Hooper, Laraine Hruby, Joleene Clough, Charlene DeMetri, Susan Robertson, Ruth Adamson. Second row: David Baker, Mary Kameoka, Naomi Cywan, May Otani, Joyce Stoer, Mike Dunaway, George Martin. Third row: James Burton, John Lucchesi, Ron Cromwell, Dennis Fujita.



Front row (left to right): Susan Lambright, Beth Throne, Linda Henderson, Frances Stahl, Betty Courrier, Louise Nissen, Barbara Simpson. Second row: Joe Gonsalves, Bill Symons, Patricia Coryell, Sally Evans, Teddie Ann Pritchard, Lennie Jay, Steve Jensen. Third row: Larry Ostrom, Bill Young, John Nelson, Jack Elvin, Ken Jones, Bob Otani, Tom Gibbs.



Front row (left to right): Shirley Ledger, Linda Caton, Dorothy Withington, Jane Reed, Kathy McClure, JoAnn Wilson, Marie Jabusch, Marilyn Goforth. Second row: Dave Schwarzenberg, Jim Yriberry, Dave Martin, Bill Woodward, Richard Bohling, Raymond Burgi, Bill Heitz. Third row: Don Lee, Danny McKnight, Tom Carli, Art Askim, Bob Fender, Bob Perry, Douglas Arke.



Front row (left to right): Judy Dempsey, Elaine West, Nattie Jane Hill, Janet Klemenok, Pat Giorgi, Donna LaFranchi, Pat Silva. Second row: Jim Graham, Ronald Kral, Joe Pacheco, Martin Braren. Third row: Albert Tarca, Lorin Nibe, Bill Afentakis, John Lorenzen, John Rittenhouse, Leonard Jason.



Front row (left to right): Barbara Brodersen, Pat Keehn, Jane Chambers, Gail Garloff, Karen Snyderman, Carol Hall, Lynne Morrow, Diane Otani, Jeanni Heying. Second row: Ed Benson, Frank Girard, Cheryl Simpson, Susan Smith, Barbara Kayser, Yvonne Bellmer, Carol Maxwell, Sydney Heggum, Carole Jorgensen, Marla Hemenway, Dean Holland, Dennis Nakano, Roland Nelson. Third row: Gary McGinnis, Bill Golson, Roy Cerini, Larry Martinelli, Ron Ritz, John Datson, Delmar Friedrichsen, Ralph Crawford, John Spaletta.



Front row (left to right): Carol Hunt, Janet Murch, Jill Richards, Nancy Cory, Pat Paris, Leilani Ramirez, Christie Paula. Second row: Diane Boccaleoni, Shirley Merkel, Marita Schulat, Dorothy Cassina, Alice Grant, Linda George, Mikel Devine, Beverly Bragga, Karen Tennyson, Jeanette Piepar, Geary Conover. Third row: Henry Yee, Gordon Sturm, Simeon Schwartz, Dale Cannon, Lee Schunk, Doug Brock, Randy Schooler, Gordon Swenson.



Front row (left to right): Georgia Anderson, Judy Pardini, Donna Riley, Margaret Straight, Barbara Boyd, Patricia Bray, Elizabeth Winkler. Second row: Ruby Sidbeck, Donna Perry, Marie Aggio, Darlene Mossi, Emily Lewis, Mary Lucy, Shirley Petersen, Donna Toth, Daphna Kimmel, Alice Shennan, Diana Crist. Third row: Dave Jensen, Richard Petersen, Kenneth Moller, Paul Rossotti, John Hassold, Allan Mahoney, Bill Martinez, Roy Smith.



Front row (left to right): Diane Rich, Nancy Taylor, Jaynn Hobbs, Barbara Veronda, Alice Edwards, Lani Thiel, Carol Hansen, Darleen Barella, Joyce Yoshioka. Second row: Eugene Strain, Jim Porter, Bob Wada, Eleonia Houston, Marilyn Martin, Nellie Manka, Pat Bowersock, Linda Roberts, Bob Green, Dennis Kawaoka, Rod Greene. Third row: Ron Radliff, Ken Nommsen, John Northrup, Phil Smith, Tom King, George McCarter, Steve Swallow, Clark Matthiessen, Richard Mogel, Walter Johnson, Alan Zimmerman.



Sharron Graves
Vice-President



KATE PUTNAM
Fall President



BILL SCHMIDT
Spring President



Bill Rusk
Vice-President



Karen Edgerton
Secretary-Treas.



Cynthia Dorfman
Secretary-Treas.



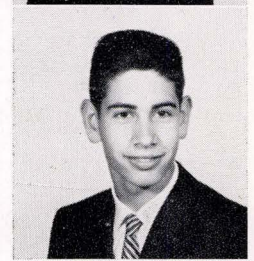
Elaine Knudsen
Girls' Club
Representative



Judy Burchall
Girls' Club
Representative



Bill Johnson
Boys' League
Representative



Ken Good
Boys' League
Representative



Judy Burchell
Cabinet
Representative



John Chance
Cabinet
Representative



Linda Brown
Cabinet
Representative

*We were
elected...*

1962

Sophomore Class Officers



MRS. DOROTHY PETERSEN
Sophomore Class Advisor



Front row (left to right): Gloria Arishita, Judith Andersen, Jacqueline Silva, Margo Toavs, Kay Arvold, Meta Petersen, Gaylene Prill. Second row: Ken Silva, Robert McCarter, Carol Ann Walker, Gertrude Hamilton, Beverly Walker, Larry Swanson, Joe Lovato, Darrell Rogan. Third row: Pete Golis, LeRoy McPherson, Lloyd Butler, LaVerne Spitzer, David Simpson, Bill Combs, Rodney Zimmerman, Dave Davis, Leroy Lowry. Fourth row: Bill Schmidt, Paul Stowring, Mike Jones, Paul Chappelle, John Zandovskis, Jack Nisson, Ken Kowalski.



Front row (left to right): Ellen Truitt, Myrna Johnson, Irene Wallin, Mary Goodin, Jeannie Elvin, Vickie Chase, Carol Silva. Second row: Dorothy Stahl, Bonnie Garihan, Juanita Derby, Jean Morita, Diana Cardoza, Sandra Miyano, Arthur Matson, Ralph Tiemann, Carol Pardini. Third row: Charles Tyler, Robert Tucker, Jim Stever, Al Peterson, Walter Peckham, Joel Reiter, Jerry Hardy, Bruno Boccaleoni, Lewis Cannon.



Front row (left to right): Rose Ann Raed, Joyce Petersen, Carol Hollingshead, Nancy Leef, Vicki Straub, Sharon Confetti, Claudia Stainbeck. Second row: Audrey King, Bonnie Reese, Jo Ann Milham, Leila Lanphear, Cathy McClintock, Sharen Christensen, Jane Otamura, Melenie Cargile, Ann Lutz. Third row: Kenneth Lyons, Mike Thiele, Barney Gannon, Hannelore Kehr, Dorothy Whitlock, Mike Wooley, Harold Thompson, Don Powell. Fourth row: James Kelly, Jerry Leahy, Robert Pritchard, Jim Dowgialo, Bill Mitchell, Don Crawford.



Front row (left to right): Elaine Hansen, Diane Howard, Joyce Samuels, Cheryl Dozier, Carolyn Greer, Nancy Robinson, Karen Edgerton. Second row: Allan Lutz, Norman Dodds, Alan Rosenbaum, Patty Nylander, Cynthia Dorfman, Ellen Otani, John Chance, Harry Scoles, Paul Heezel. Third row: Dave Luce, Alan Kuehn, Richard Kuehn, Randy Williams, Jack Carlsen, Ron Ransom, Larry Bishop, Gary Baldwin. Fourth row: Henry Chadwick, Keith Goldstein, James Linch, John Heron, Ed Sarkesian, William Gray.



Front row (left to right): Glynda Taylor, Anita Tenorio, Evonne Ronsheimer, JoAnne Hanson, Barbara Pellascio, Kathleen Medeiros, Maj-Lis Edelhnammar, Janice Scott, Jeanne Thompson. Second row: John Roberts, Tom O'Dall, Alvin Baldwin, Robert Taylor, Ed Cardoza, Steve Rossotti, Martin Nommsen, Bill Rusk. Third row: John Anderson, Brad Evans, Ronnie Scott, John Livie, Harry Petersen, Ed Garcia, Tim Hall, Mike Woldemar.



Front row (left to right): Kathleen Gupton, Julie Ferrari, Rebecca Holmes, Margaret Cline, Betty Sykes, Pat Colldeweih, Jeanne Nelson. Second row: Frank Kozelou, Ross Leask, Pam Warriner, Antoinette Moreda, Shirley Tapan, Barbara Noriel, Judy Jensen, Don Taylor, Terry Kohr. Third row: Tim Wurst, Donald Millerick, Dennis Merkel, Carl Errins, Bill Tomrose, Richard Williams, Bob Wells, Mike DeConter, Robert Cowart.



Front row (left to right): Anneice Green, Randi Vogensen, Kathryn Rasmussen, Rosalind Paul, Pamela Kruse, Marilyn Greer, Barbara Stansbury. Second row: Richard Bacon, Bob Waldron, Gary Masada, Jim Genz, Pam Sambuck, Rosemarie Moore, Pamela Murray, Jack Agius, Carl Lorenzen, Prentiss Monson, Gene Burton. Third row: Tom Brians, Max Mickelsen, Temple Logan, Ronald James, Malcolm Stewart, Dave Haynes, Dave Maack, Leland Brians, Bob Halvorsen, Jim Pacciorini, Bill McDonald.



Front row (left to right): Arlene Weitzman, Linda Brown, Lisbeth Laugesen, Sharon Speakman, Sharron Graves, Kate Putnam, Patti Lumsden, Maryann Short, Natalie Isaak. Second row: Ron Coate, Larry Bennett, Jim Csutoras, Diane Shaw, Betty Ramos, Barbara Sanders, Connie Guyer, Louetta Sorensen, Robert Potter, Mike Turney, Harold Mazza. Third row: Dennis Merkel, Tim Porritt, Bill Zent, Bill Empey, David Bruce, David Schauer, Jim Bostrom, Ron Getty, Dennis McIntosh, Al Bionda.



Front row (left to right): Veronica Sovak, Sirkka Niukkanen, Lonnie Grant, Carol Brown, Juanita Hollis, Elaine Knudsen, Judy Burchell. Second row: Mark Hayden, Hary Ann Morgan, Betty Williams, Cynthia Meyer, Frances Pronini, Jean Strange, Elizabeth Golitz, Vicky Garber, Ron Durham. Third row: Richard Boom, Tom Palya, David Minton, Dan Torliatt, Ralph McNamee, Tom Jason, Hugh Cook, Carl Young, Larry Baker, Chris Beebe.



Front row (left to right): Gloria Karns, Delphia Tibbets, Diana Morgan, Kathy Johnson, Deana Bussmann, Sigrid Helgren, Geraldine Moller, Jill Johnson, Barbara Eslick. Second row: Dave Mahrt, John Maffia, Jerry Smith, Karen Sabaca, Linda Benito, Barbara Spær, Kathy Harvey, Ron Silacci, Norman Saunders, Alan Matteri. Third row: Jim Watson, John Chan, Ken Hawkins, Steve Copeland, Bill Johnson, John Petersen, Mike Lallatin, James Patterson, Harold Hummel.



Front row (left to right): Carlyn Young, Sharon Freese, Nancy Goforth, Linda Feliz, Patty Parsons, Carolyn Robfogel, Doris Moller, Kathryn Jensen, Nancy Wilson, Ann Revard. Second row: Margaret Caquatte, Janet Bohling, Sharon Lucchesi, Carol Pardini, Arlene Mendelssohn, Wanda Conover, Deborah Erickson, Pam Armbruster, Andrea Trimble, Sally Miller, Lani Lee, Sandra Gregg, Angela Brunton. Third row: Rusty Soernsen, John Miller, Michael Butner, Jerry Stewart, Mike Prevette, Ken Good, Jerry Medeiros, George St. Clair, Chris Riewerts, Bob Gossage, Vaughn Viator.



EVERYONE ENJOYS FIRST SENIOR DANCE.



JUNIORS DECORATE HALLS FOR CHRISTMAS.

C L O U B S





NANCY ARMBRUSTER
President

MISS CATHARINE DUGGAN
Advisor

GIRLS' CLUB

This school year of '59-'60 has been a year of many "firsts." It was the first year to have a Girls' Club song, first to honor all foreign-born P.H.S. girls at our annual tea, first to have P.H.S. girls serve as Junior Gray Ladies, and first time "Howdy" (our mascot) was given a new costume. The Girls' Club president was the first American A.F.S. exchange student from this school.

There have been many successful activities, with about 290 girls participating in them. Girls went to the Sonoma State Hospital during Christmas time, participated in the Santa Rosa Cerebral Palsy program and helped with their Christmas program, and had many instructive and entertaining programs such as the talent show. They also raised money for A.F.S. on "Tag Day" and sent out welcome cards to all new girls. The girls all worked hard, but they had a wonderful time.

"Katy's Kittens"



SHARON SMILEY
Vice-President

MARILYN CHAN
Secretary

MARILYN THOMPSON
Treasurer

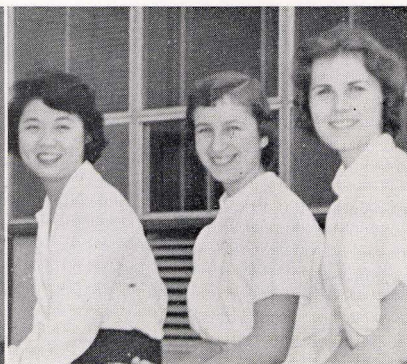
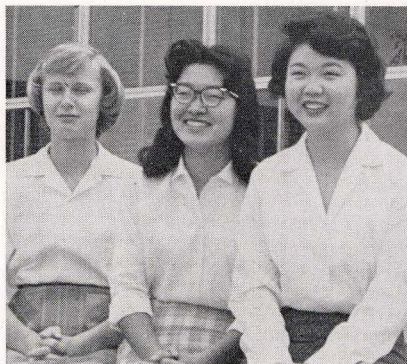
ARLEEN MEADOWS
Social Secretary

BARBARA COLIN
G.A.A. Representative

Fall Representatives: Elaine Knudsen,
Joyce Yoshioka, Evelyn Chan.

GIRLS' CLUB FASHION SHOW: Carol Collings,
announcer; Anita Tenorio, model.

Spring Representatives: Evelyn Chan,
Beverly Bragga, Judy Burchell.



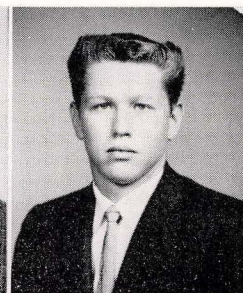
BOYS' LEAGUE

Under the capable leadership of the cabinet and advisors, the Boys' League held several interesting programs which were held in the new multi-use room. Officer Cole from the police department spoke on the disadvantages of narcotics. He also explained many misinterpreted laws of the city. Mr. Rick Henderson, national champion stock car driver, showed movies on the 1957 Indianapolis "500" Speedway Race. It was extremely thrilling and entertaining.

In addition to these programs, the cabinet has worked very hard this year. It compiled a list of available speakers for future reference and use for the Boys' League programs. It also made plans to sponsor the annual Block P - Faculty basketball game.



RAY RAFFO
President



DENNIS RAGAR
Vice-President

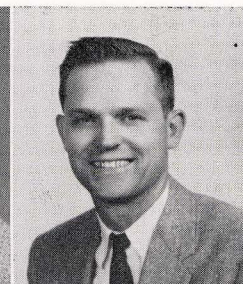
"Demo's Demons"



RICHARD STOUT
Secretary-Treasurer



MR. DeMONT WALKER
Advisor

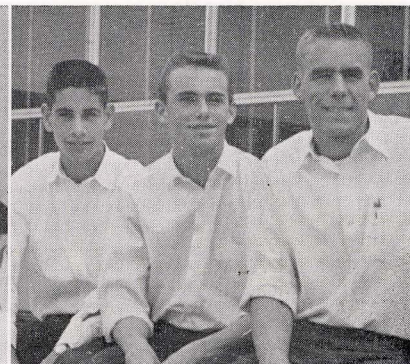
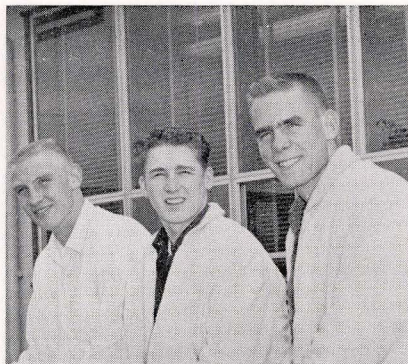


MR. JAMES DAVID
Advisor

Fall Representatives: Bill Johnson,
Bill Symons, Gary Carlson.

Rick Henderson speaks at a
Boys' League program.

Spring Representatives: Ken Good,
Chuck Williams, Gary Carlson.





BARBARA COLIN
President



NANCY IVARSON
Vice-President



LYNN ABBEY
Secretary



SUSIE HANSEN
Publicity Manager



JILL RICHARDS
Basketball Manager
CAROL UYEDA
Hockey Manager
ROCKY LEGGE
Volleyball Manager

G. A. A. Success Again!

G.A.A. had a very exciting and eventful year filled with sports, including basketball, softball, hockey, volleyball, tennis, bowling and recreational swimming. The average signup for each sport was between 160 and 170 girls. Basketball had the highest attendance this year, with 195 players.

This organization also sent representatives to play-days at the University of California and San Francisco State College, had charge of a football concession to raise extra money for the Christmas party, and held an annual banquet at the close of the G.A.A. year where awards were given out and new officers for the coming year were announced.

MIKEL DEVINE
Bowling Manager

CAROL VAN BEBBER
Tennis Manager

JACKIE LARSEN
Softball Manager





G. A. A. BASKETBALL CHAMPS (left to right): Connie Revard, Marilyn Chan, Jill Richards, Roberta Casarotti, Bea Rasmussen, Judy Hændrix, Jackie Larsen.



MISS SHIRLEY MacIVAIN
Advisor

A "Really" Big Year!



G. A. A. HOCKEY CHAMPS. Front (left to right): Karren Lutz, Janet Murch, Lynn Abbey, Nancy Armbruster, Nancy Ivarson, Connie Revard, Jill Richards. Back: Vicki Perez, Ann Revard, Marilyn Chan, Jacque Brick, Kathy MacDonald, Gloria Neilsen, Carol Hunt, Sigrid Helgren, Carol Bino, Janet Klemenok, Jackie Larsen, Naomi Cywan.

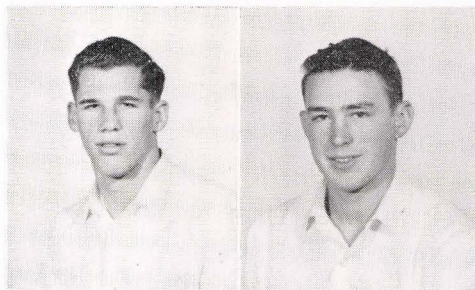


G.A.A. BOWLING AND TENNIS CHAMPS. Front (left to right) tennis: Connie Revard, Carol Bino, Jill Richards, Linda Brown, Judy Burchell, Jackie Larsen, Nancy Ivarson. Back: Judy Barboni, Karen Tennyson, Jolene Clough, Linda Feliz, Sigrid Helgren, Gloria Arishita, Robin Arenander, Pat Lombardi.



MISS DOROTHY WEIGHTMAN
Advisor

TOM BAKER, PAT PEEBLES
Editors

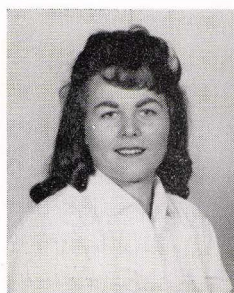


MR. FRED STOPSKY
Advisor

TROJAN

The TROJAN staff is proud to announce that more issues of the paper were printed this year than ever before. The greatest factor was its wide range of advertising, which enabled the printing of the constitution, giving each student a copy to read. The sports and other activities coverage was presented so everyone knew what was happening around their new school. The TROJAN had a very successful year and is planning to have an even better one next year.

As You Took the First Steps



JOANN RITKO
Feature Editor



BILL ANDERSON
Sports Editor



BETH THRONE
Exchange Editor



TROJAN STAFF. Front (left to right): Christena Parker, JoAnn Ritko, Tom Baker, Beth Throne, Carol Owen, Ron Empey. Back: Roy Smith, Larry Statan, Norva Achenbaugh, Karen Petersen.

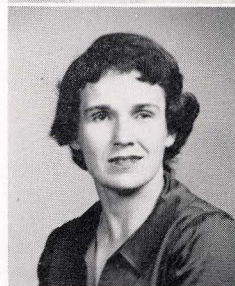


MORE OF THE TROJAN STAFF BUSY AT WORK. Front (left to right): Teddy Burke, John Dray, Don Gossage, Pat Peebles, Bill Anderson, Barbara Watson. Back: Bill Pronzini, Rush Putnam.

ENTERPRISE

The ENTERPRISE class had a very successful year. Under the guidance of the motto, "Sell—Sell—Sell," it sold a record number of 725 books over 650 last year, and a record number of 186 ads over 125 the previous year. The editors and advisor compiled manuals of what has to be done and suggestions for future years. We hope, while you read your book, that you will find many pleasant and lasting memories from its contents.

CAROL VAN BEBBER
Editor



MRS. CATHERINE O'BRIEN
Advisor

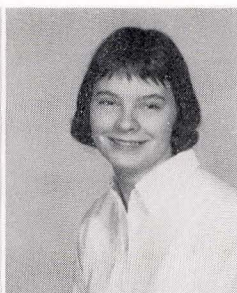
We Took Them Down



CONNIE REVARD
Layout Editor



JUDY LERER
Picture Editor



JACQUE BRICK
Copy Editor



MELVIN RUIZ
Ad Manager



LYNN ABBEY
Business Manager



ENTERPRISE STAFF. (Left to right): Stan Maggiora, Gail Silva, Judy Lerer, Marge Windrick, Pam Shultz, Joan Tucker.



ENTERPRISE STAFF TAKING A BRIEF MOMENT TO RELAX. Front (left to right): Connie Revard, Carol Van Bebbler, Melvin Ruiz. Back: Barbara Sturtz, Susie Hansen, Lynn Abbey, Bobbie Gossage.



PAT PEEBLES
Fall President



Advisors: Mr. Leonard Heinz, Miss Mary Elizabeth Hance, Mrs. Paula Stonitsch



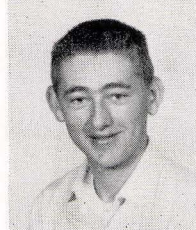
NANCY IVARSON
Spring President

HONOR SOCIETY

The Honor Society has been exceptionally active this year. Our money making projects included a concession booth at a football game and the sale of "swap" pictures. With the money earned we have a \$100 scholarship to award to a graduating senior. We also contributed to the A.F.S. Fund.

The first social activity of the year was a Winter Dinner on January 7. Miss Margaret Clark spoke to us about her trip to Russia. In April, eleven students participated in the C.S.F. regional conference at Analay High School. Our last social activity was an informal pot-luck dinner in the spring. This year the Honor Society has become an active, working part of our new school.

Representatives. (Fall): Cynthia Dorfman, May Otani, Jackie Larsen. (Spring): John Chan, Karen Petersen, Velma Veronda.



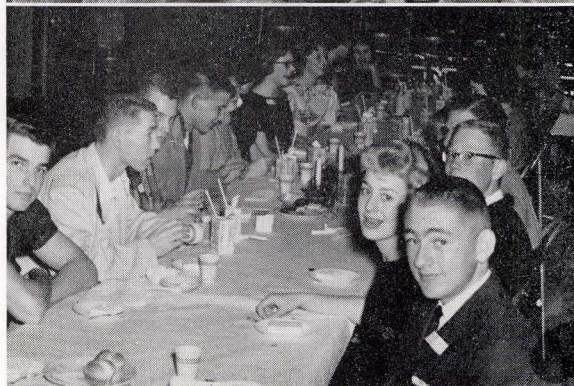
Elizabeth Stonitsch
Vice-President

Carol Hansen
Recording Sec'y

Ken Nommsen
Treasurer

Nancy Ivarson
Social Secretary

Richard Mogel
Reporter



HONOR SOCIETY BANQUET



Jim Phillips
Vice-President

Mary Kameoka
Recording Sec'y

Karren Lutz
Treasurer

Jacque Brick
Social Secretary

Gloria Neilsen
Reporter



C. S. F.

Front row (left to right): Nathan Lutz, David Chance, Carole Uyeda, Pat Peebles, Kathy MacDonald, Pat Lombardi. Second row: Jackie Larsen, Nancy Johnson, Marilyn Chan, Maureen Murphy. Third row: Nancy Ivarson, Esther Smith, Don MacKenzie, Lynn Abbey.
Not pictured: Liz Stonitsch.

Congratulations to this year's C.S.F. Life Members! They should be commended for their excellent scholastic ability throughout their high school years. In order to be qualified for life membership, these students must be members of this club at least four semesters, including one in their senior year. C.S.F. Life Members receive their pins at graduation, along with a special certificate for their outstanding work.

Again this year the Bank of America Award winners were picked from seniors outstanding in a special field. Much time and effort goes into their selection, with consideration being given to activities and citizenship, as well as scholarship.

Four of these—Nancy, David, Gary, and Diane—were fortunate enough to be Gold Cup Winners. Later in the year they competed in regional finals for cash awards from \$25.00 to \$1000.00.

Bank of America Awards . . .

Front row (left to right): Lynn Abbey, Diane Chapman, Nancy Johnson, Kathy MacDonald, Diane Wilfert. Back row: David Chance, Don MacKenzie, Carol Collins, Linda Brians, Gary Carlson, Bob Beltzner.



JUDY ROSE



We Led



JUDY HENDRIX



TROJAN HORSE MASCOT

... We Sang



LINDA GEORGE



JOLENE BARBONI



BOBBIE GOSSAGE

The Yells



MARGARET ELPHICK



SHELLEY BARLAS



"COME ON, TROJANS—FIGHT! FIGHT! FIGHT!"



BETTY ALEXANDER



DOROTHY CASSINA

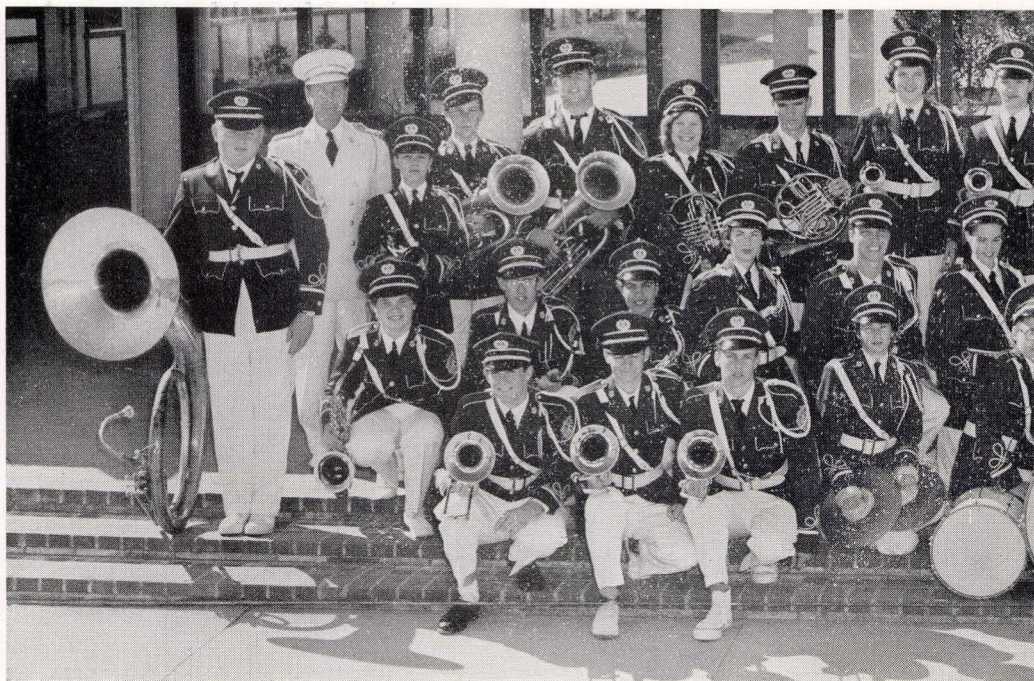


ALICE GRANT

The Songs



JANE CHAMBERS
JACKIE COWART
VERNA SUE WEBB



BAND. First row (left to right): Wayne Kite, Douglas Linch, Allan Budinsky, Carol Bino, John Chance, Nancy Evans, Jerry Rosenthal, Carol Hansen, Bob Kendall, Tim Porritt, Jack Carlson. Second row: Sirkka Niukkanen, Charles Young, Diane Boccaleoni, Helen Linch, Wayne Petersen, Jill Richards, Marilyn Martin, Susie Ann Lange, Jane Chambers, Carol Owen, Helen Petersen, Anneice Green, Mary Hansen, Dan

We Played the Music . . .



PEP BAND. First row (left to right): Delbert Petersen, Doug Linch, John Chance, Tim Porritt, Bill Georgeson, Richard Kuehn. Second row: Jerry Rosenthal, Wayne Petersen, Helen Linch, Marilyn Martin, Jill Richards, Sirkka Niukkanen, Winton Baker, Nancy Evans. Third row: Milton Green, Pam Porritt, Jane Chambers, Carol Hansen, Nancy Johnson, Velma Veronda, Diane Chapman.



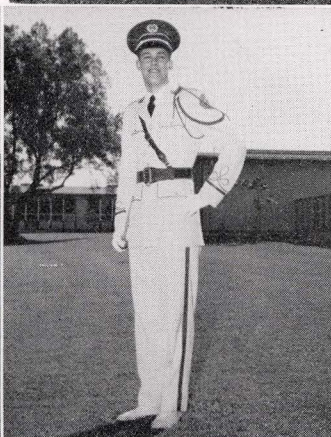
Torliatt, Mike Jones, Delbert Petersen. Third row: Paul Stowring, Mr. George Hatfield (director), Tom O'Dell, Richard Kuehn, Ed Potts, Pat Coryell, John Linch, Diane Chapman, Velma Veronda, Winton Baker, David Minton, Mike Jones, Bill Georgeson, Pam Porritt, Nancy Robinson, Nancy Johnson, Gene Burton, Allen Kuehn, Jimmy Genz, Milton Green (drum major).

We Led Them On!

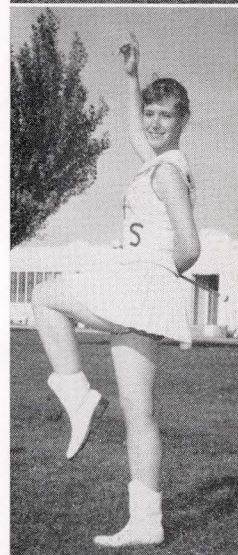
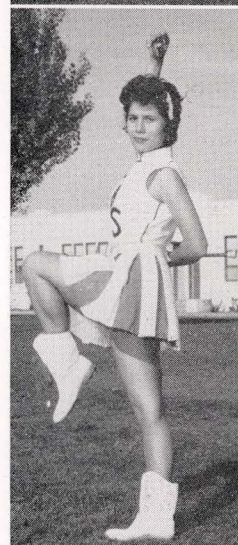
JUDY BARBONI
Head Majorette



MR. GEORGE HATFIELD
Director



MILTON GREEN
Drum Major



SUSAN LAMBRIGHT
BONNIE RABELLO
DIANE RICH



A CAPPELLA. Front row (left to right): Alice Shennan, Lonna Kiefer, Debbie Erickson, Daphna Kimmel, Sandra Peters, Jackie LaFollette, Betty Williams, Bonnie Rabello, Diane Chapman, Lani Thiel, Tina Johnson, Shirley Johnson, Pat Giorgi, Mitsuko Morishita. Second row: Linda Peters, Carol Hollingshead, Barbara Kayser, Diane Shaw, Nancy Ivarson, Angela Brunton, Evonne Ronsheimer, Sharon Freese, Rose Marie Moore. Third row: Marcia Fisher, Linda Brown, Judy Burchell, Barbara Boyd, Mike Thiel, Charles Young, Robert Nissen, Gail Silva, Betty Courier, Kathy Pogue, Cheryl Handy, Jane Reed, Terry Brooks. Back row: Sharon Sanders, Rose Reed, Lellani Miller, Joan Tucker, Mickey Turney, Al Milham, Roy Burchell, Delbert Petersen, Wayne Kite, Gerald Lombardi, Wayne Petersen, Joanne Blackwell, Janet Bohling, Jill Johnson, Linda Caton.



MR. GEORGE HATFIELD
Director

Voices and Sounds

This has been one of our best years for music. The instrumental group has made many public appearances . . . Women's Club program, Public Schools Week concert, two P.T.A. programs, and several other performances. The a cappella has been just as busy . . . a Christmas program for the public and student body, open house, the Sonoma County Music Festival, and a program at Wilson School. Both of these groups also sent people to the Music Clinic at the College of the Pacific.

ORCHESTRA. Center: Karen Tennyson. Front row: Jackie Larsen, Donna Minton, Marilyn Martin, Jill Richards, Nancy Johnson, Shirley Hart, Kathy MacDonald. Second row: Alan Karsevar, Wayne Petersen, Charles Young, Diane Chapman, Winton Baker, James Linch, Doug Linch, Wayne Kite, Milton Green, Carol Hansen, Jane Chambers. Third row: Susie Lange, Tina Johnson, Mr. Hatfield, Nancy Evans, Jerry Rosenthal, John Chance, Christie Paula.





We Kept You Safe

TRAFFIC COURT AND
SAFETY COMMITTEE

We Played Along

NOON HOUR COMMITTEE



We Kept Your Spirits Up

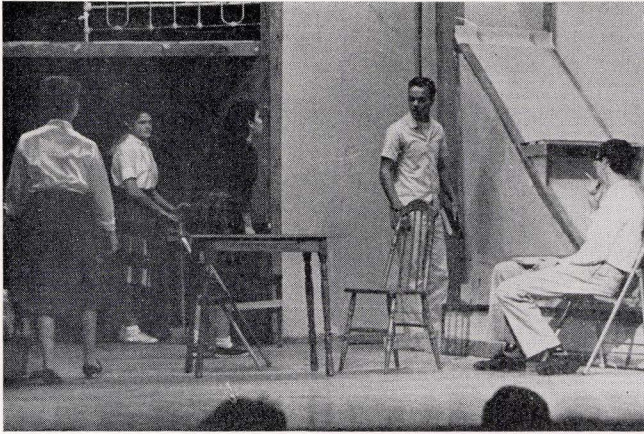
RALLY COMMITTEE

We Were Never Wrong

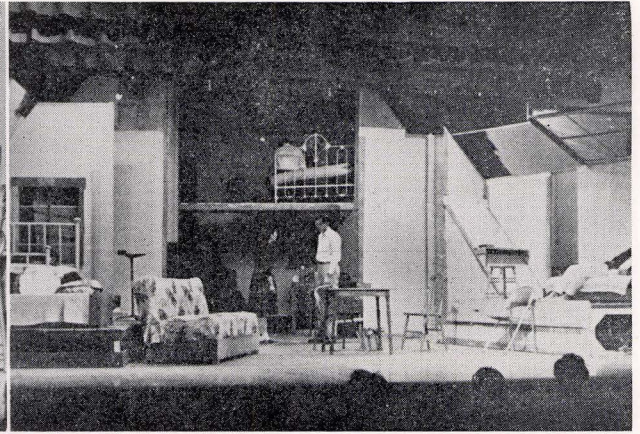
FINANCE AND MERIT
COMMITTEES



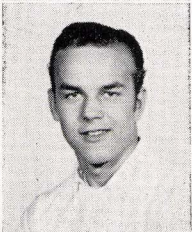
Senior Play—"The Diary of Anne Frank"



Anne: "Why did I ever have to get locked up with a boy like you!"



"Anne, no! You must never go down there as long as we are here!"

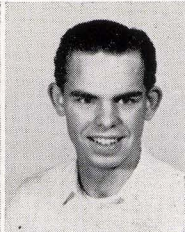


Kristina Parker
Fall President
Spring Thespian
President

Mike Parsons
Vice-President

Donna Minton
Treasurer

Florrie Peebles
Historian



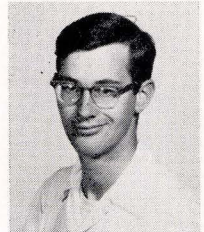
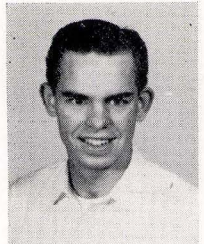
Ron Empey
Fall Thespian
President

DRAMA CLUB

The Drama Club put on its two annual plays—the fall play, "Jenny Kissed Me," and the senior play, "The Diary of Anne Frank." The latter was an overwhelming success. It was sold out both Friday and Saturday nights, and became the first play in the history of P.H.S. to be called back for a re-showing.



Mr. Lewis Campbell
Advisor



Carol Hansen
Secretary

Ron Empey
Spring President

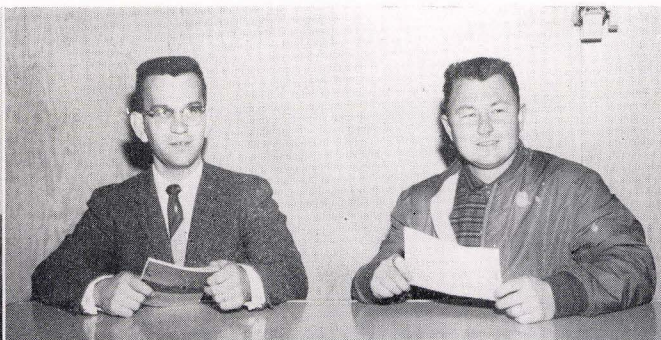
Tom King
Vice-President

Pam Porritt
Treasurer

Florrie Peebles
Historian



PETE AZEVEDO
Fall President



ADVISORS: Mr. Al Sirek, Mr. Mervyn Porter



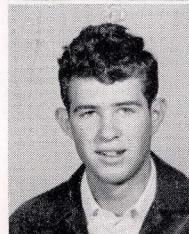
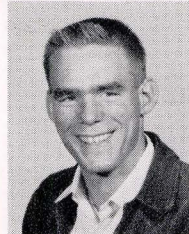
BILL CASSINA
Spring President

F. F. A.

The F.F.A. has had a very successful year. They've attended numerous field days and judging contests and have come home with their share of trophies. In the spring they went to Davis and placed high in tough competition. During Easter vacation eight boys attended the Junior Grand National, and on April 9 they held their annual card party, donating all the profits to the Foreign Exchange Student Fund.



F.F.A. JUDGING



Ken Bianchini
Vice-President

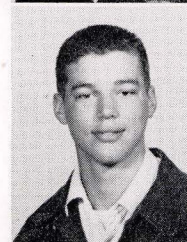
Leroy Pozzi
Secretary

Gary Carlson
Treasurer

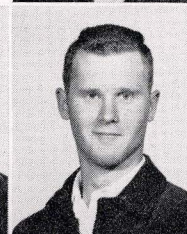
Bob Barr
Reporter



Pete Bussmann
Sentinel



Bill Johnson
Sentinel



Bob Wade
Vice-President

John Livie
Secretary

Pete Azevedo
Treasurer

Charles Petersen
Reporter



Senior

SENIOR BALL COMMITTEE

You dance on your feet,
I'll dance on mine!



SENIOR ANNOUNCEMENT COMMITTEE

Come to our graduation—
don't forget the gifts!



SENIOR CLASS DAY COMMITTEE

We had lots to work with
. . . everything but talent!



SENIOR BREAKFAST COMMITTEE

Make mine milk!

Committees

SENIOR SONG AND GIFT COMMITTEE

Sing a song of '60!



SENIOR BANQUET COMMITTEE

Eat, drink and be merry,
for next week we graduate.



SENIOR DITCH DAY COMMITTEE

"The Big Secret!"



SENIOR BACCALAUREATE AND SENIOR PLAY PUBLICITY COMMITTEE

The best ever!





SERVICE CLUB
LONG LIVE THE TYRANTS!

CLUBS



FRENCH CLUB
VIVE LA FRANCE!



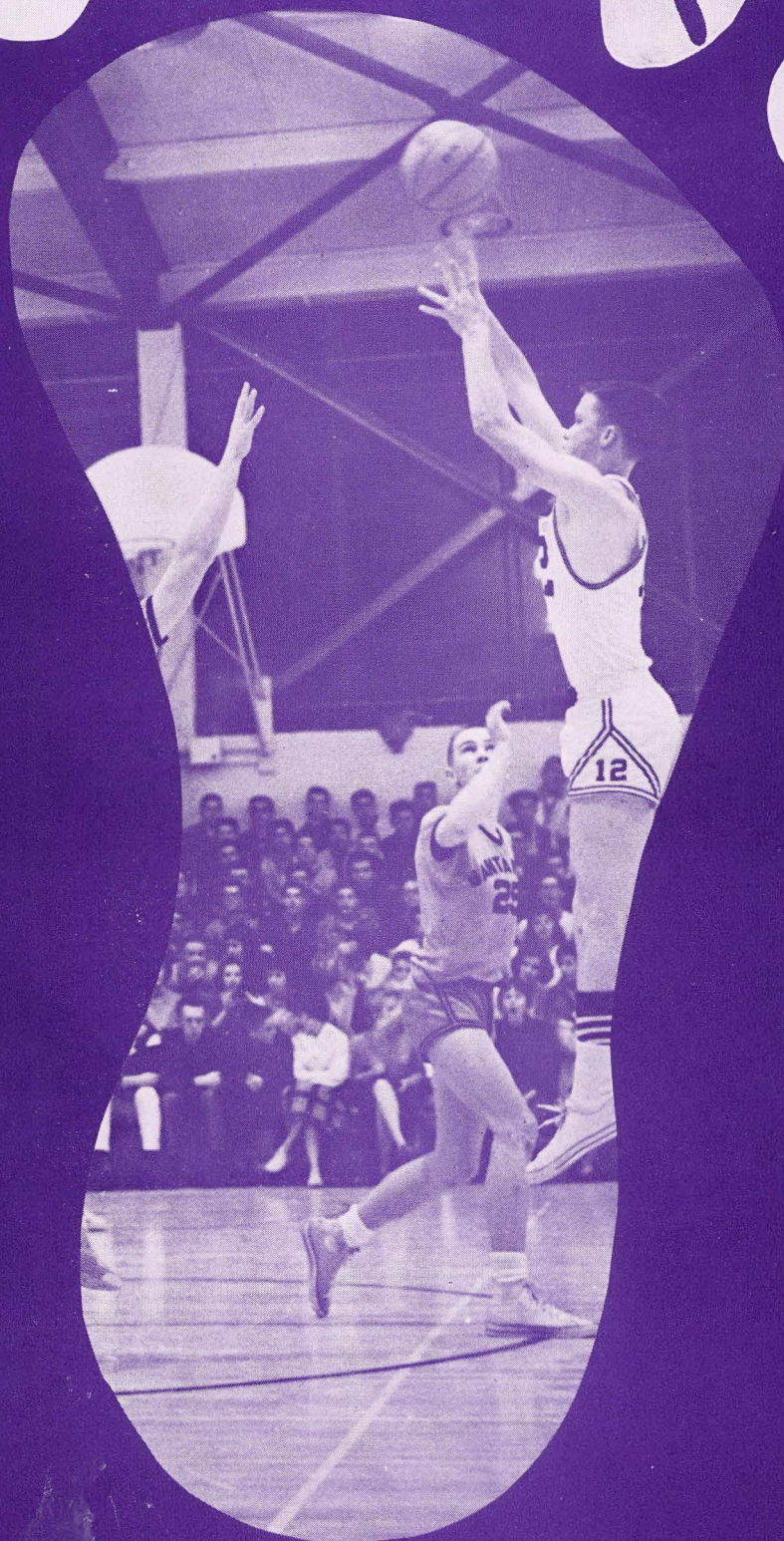
LATIN CLUB
"ET TU BRUTE"

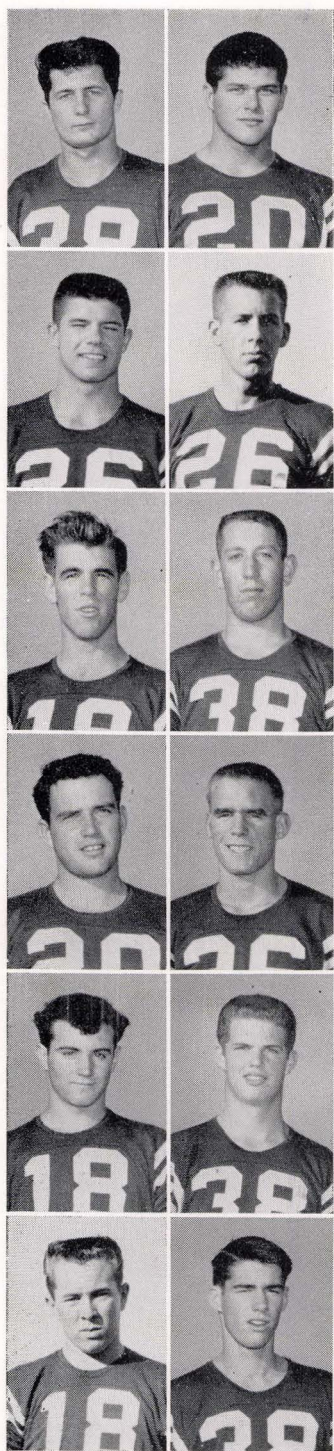
DELEGATE ASSEMBLY

First row (left to right): Ron Ritz, Donna Minton, Karen Edgerton, Diana Cardoza, Sharon Graves, Victoria Perez (Vice-Prs.), Helen Hogya, Judy Barboni, Carol Maxwell, Joan Piazza, Shelley Barlas, Gail Silva. Back row: Clinton Gow, Tom King, Ken Lentz, Lenny Jay, Craig Holmes, Eugene Corzine, Martin Braren, Max Mickelsen, Bill Rusk, Darrell Rogan, Ron Silacci, John Richards, Richard Whalley, Gary Lyman, Pete Bussmann.



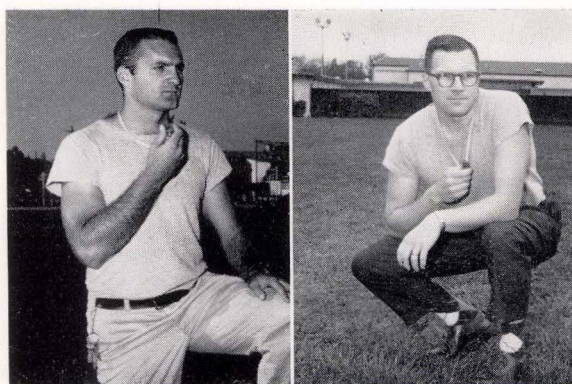
S P O R T





Don Gossage
Gordon Augustine
Floyd Volker
Gary Lyman
Louie Baccala
John Olander

Ray Raffo
Richard Stout
Ken Bianchini
Gary Carlson
Tim Talamantes
John Richards



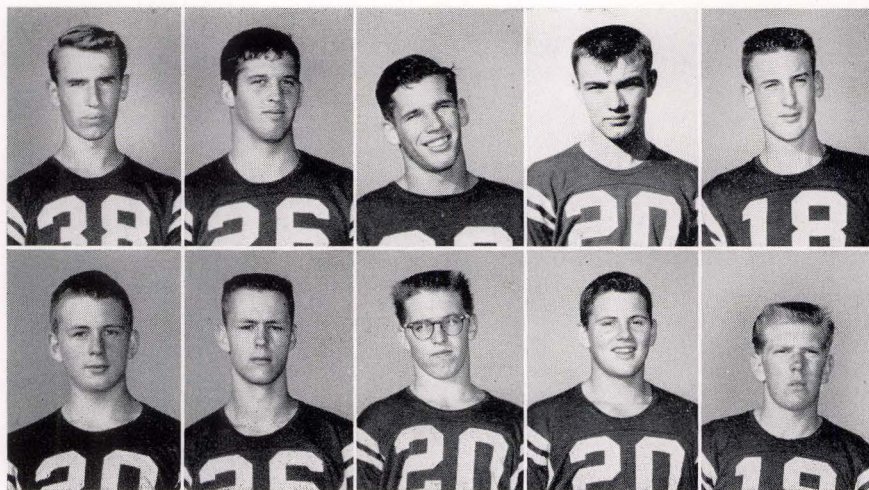
MR. FRED BROCK
Coach

MR. HOWARD HILL
Assistant Coach

Varsity Football

With five wins to our credit, Coach Brock termed the season a successful one. Although pre-season rating had us about average, we proved that a lot of work can make a good ball club. There was a record number who went out for football and the spirit was very high during the entire season.

The majority of our starting team consisted of seniors, anchored around big center Ray Raffo, who later played in the North-South game and was on the second All-Coast Team.



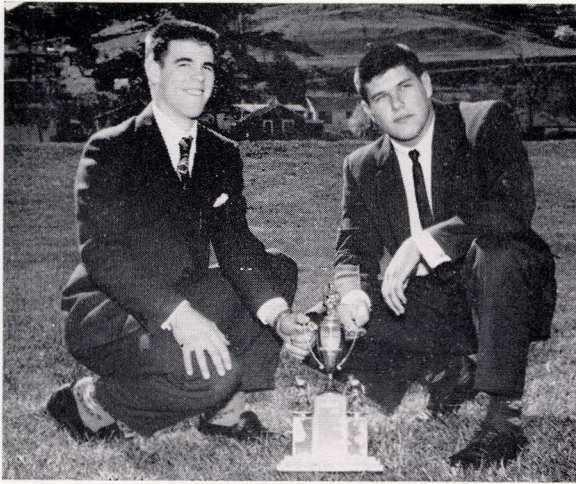
Tom Martin
Ted Mogel

Ed Potts
Ron Cromwell

Tom Baker
Ken Lentz

Roger Witsch
Richard Mogel

Paul Martin
Lenny Jay



The Bill Abbey Trophy received by Floyd Volker, Ray Raffo



DON GOSSAGE
Player of the Year

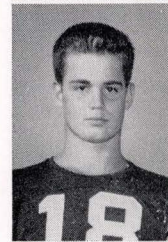
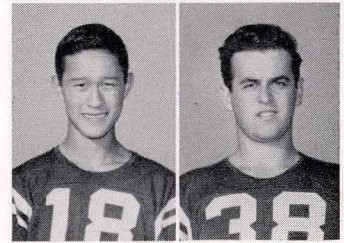
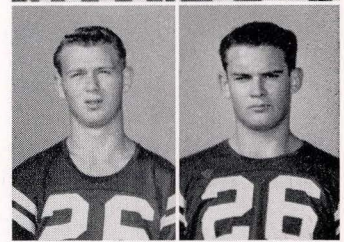
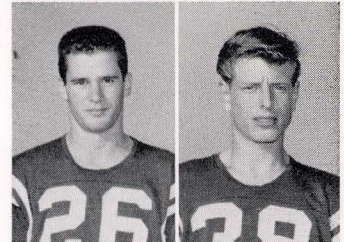
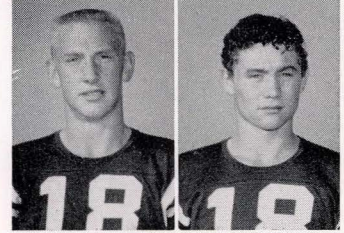
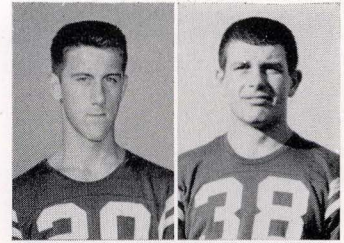
SCORES

TROJANS

21	Analy
12	Montgomery
19	Santa Rosa
34	Drake
25	Marin Catholic
20	Healdsburg
0	Napa
20	Sonoma

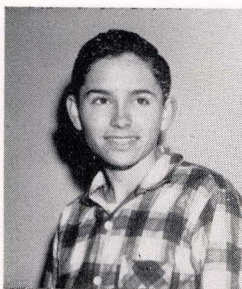
Opponents

6
13
19
0
0
6
21
18

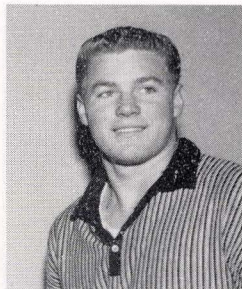


Eugene Corzine
Bill Johnson
Rick Williams
Tom Palya
Dennis Nakano
John Lucchesi

Richard Romelli
Bob Wade
Dale Cannon
Mike Potter
Frank Girard



RON RUDOLPH
Manager



ART ASKIM
Manager



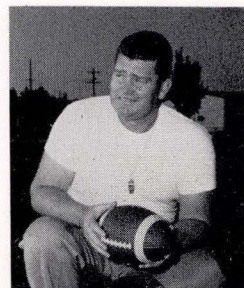
GO! GO! GO FOR A TOUCHDOWN!

JUNIOR VARSITY

The JV's wound up with a terrific season, undefeated, with only one tie. Although we had a "green" team, their hustle and spirit made up for the lack of experience.

A majority of the JV's will move up to varsity positions next year and will play a very large and important role in Coach Brock's 1961 team.

Front (left to right): Pete Azevedo, John Anderson, Allan Brody, Dave Schwarzenberg, Pete Bussmann, Chris Riewerts, Alan Rosenbaum, Dave Mahrt, Steve Dorenfeld, Gene Bino, Glenn Wellman, Dan Torliatt, Bob Waldron, Mike Wooley, Ed Garcia. Second row: Paul Stowring, Tom Moller, Bill Gray, Dave Luce, Al Bionda, Rodney Greene, Ken Corippo, Bill Empey, Jerry Medeiros, Richard Mackey, Bill Gibbe, Bill Larsen, David Jensen, Rich Maddalena, Charles Bird, Bob Gossage, Harold Mazza, Leland Brians, Ken Kram, Don Forbes.



DeMONT WALKER
Coach



Coach Gillmore's Trojan squad...
an offense based on that used...
California and U.S.F. This offer...

ROJANS TRAVEL TO HEALDSBURG HOST NAPA INDIANS ON TUESDAY

Petaluma's once-beaten...
attempt to snap the two...
winning streak of the...
Healdsburg...

Tip-in Beas
Rosa Panthe

once-beaten Petalum...
their title hopes alive...

Ice-Cold Troy Drops 26-16 Fray To Vallejo

Ice-cold shooting, coupled with...
equally inefficient free-throwing, and...
4-point second half proved to be the...
estimate downfall of Petalum's Trojans...
as they dropped a slow-moving...
priorly played 26-16 decision to Val...
s Apaches last Friday evening...
local gym.

Trojan coach George Gill...
he effort put out by...
poorest of the sea...
d at times during that...
half that the Trojan...
ment lid nailed across th...
Dray's ten-foot jumper...
Johnny Olander's...
swisher were the onl...
uld manage in the seco...
essed all seven of their...
in that 16-minute ten...
a had the best of it...
eaving the floor with...
on the unbelievab...
2-9. Accurate foul...
ely baskets by Billy...
ninth sent Vallejo ah...
early in the fourth...
ver caught up agai...
led Trojan scorers...
while Olander ha...
d all the...

MORE-COACHI PAIGN TONIGH

Petaluma Trojans, th...
ions of the N.B.L. S...
etball race, open their...
paign tonight, when they host the...
ty San Rafael Bulldogs in the...
uguration of the new gym.

Southpaw Shelton is t...
cog in the Healdsburg...
with the capable...
star Johnny Walk...
game should prov...
oughest in this...
Petalum...

Smash Ind
L. Livie H

their outstanding...
wards, Dennis Ragar...
returning to early se...
a tremendous effort by...
Petaluma Trojans served...
the rest of the N.B.L. that...
ined their feared offensiv...
the high...
40 last Tu...

dballers turned in...
the season as they...
ed the Indians both...
ensively. Troy's...
ders controlled both...
y yanked down 42...
Dray led the Trojans...
nson, Troy's aggres...
center, pulled in 10...
Petaluma was unsto...
scored in dou...
Trojan spa...

HEALDSBURG TOPPLE PETALUMA

The Healdsburg...
Derek Shelton and...
all but eliminated the...
lump...
the N.B.L. section I race...
when they toppled the...
a hair-raising thriller...
und hardwood.

Healdsburg shock...
hout the contest...
of brief moment...
cond stanzas. I...
has proved in pa...
sheer inability...
nsive att...

OPEN 195 ST SAN RAFAEL

Rush Putnam...
any use a man-to-man pat...
Mr. Gillmore has named th...
ing five to start tonight's in...
Dennis Ragar f...
Name...
John Dray f...
Rush Putnam c...

Winless Sonoma Tonite

er having been virtually eliminat...
the North Bay League race by...
35-32 setback from the...
leading Healdsburg Greyhounds...
ay, George Gillmore's Petalum...
will get a chance to vent th...
the winless Sonoma Drag...
journey to the valley...
s encounter.

"must" win for Troy, ...
ening would snap the...
ous thread which he...
title hopes. A big...
gons, who by this ti...
red of being the scap...

they defeated the Analy Tigercut...
14 on the...
Har...
Mike Opsomer...
ve with 13 and 12

he game out of...
as they poured...
itors' 10. Car...
seven poin...
ted on a...
free throw...
of sever...

as they accounted for 18...
points. Ostrom, playing with a se...
verely injured ankle, proved to be the...
driving factor which kept Troy in the...
His counterpart, Livie, cor...
when Gillmore's roun...
themselves in dire ne...
bunch.

is extremely rough an...
nced by the fact th...
sters were called f...
s on 22 different...
rooters were al...
two technicals.

Petalum...
rojans, led by...
forwards, outfou...
ressive Analy Tiger...
18, to win their initial...
contest by a score of 63-46.

on Dray and Dennis Ragar, Troy's...
lections for all league honors, led...
ited Trojan aggregate past the...
ng Steve Sullivan and his equally...
teammate Roger Mann. Both...
and Mann were...

not only boast their...
moral to crush all Troy title ho...
The Dragons are not, by their co...
admission, a high scoring o...
tentially high scoring cage team. T...
only hopes in an upset lay in ag...
sive floor play and a skin tight defe...

Next Tuesday, Gillmore's Troj...
get a severe non-league test wh...
angle with the highly tout...
rates on the local co...
will tackle...

UNIVERSITY COACH FIRST SEASON

arsity mentor Georg...
ns his first season as hea...
ach at Petaluma Seni...
d, pitting his highly-tout...
e against the San Raf...
n their season opener in...
nasium...
a graduate...
of Color...

Trobabes Bury Bullpups To Win Tenth Straight

Coach Bill Thorsen cleared the b...
early in the second half in an e...
to keep the score respectable as...
a Trojan lightweights coas...
49-15 triumph over i...
Healdsburg Bullpups on the lose...
courts Friday evening. The victo...
the Trobables' tenth straight in th...
sign.

Pacciorini led the Trobabs...
action with 11 points, whil...
he baskets and free t...
distribut...

Paces Trojans Over Giants

ohn Dray's 14 points an...
the Petaluma Troja...
Redwood Giants 38-...
in the...
n gym...
and oper...
wood whit...
margin and wh...
cagers' lead was a m...

Dray was especially outstandi...
he scored 17 points and yanked...
10 rebounds...



JOHN DRAY



DENNIS RAGAR



LYNN LIVIE



BILL JOHNSON



LARRY OSTROM



RUSH PUTNAM

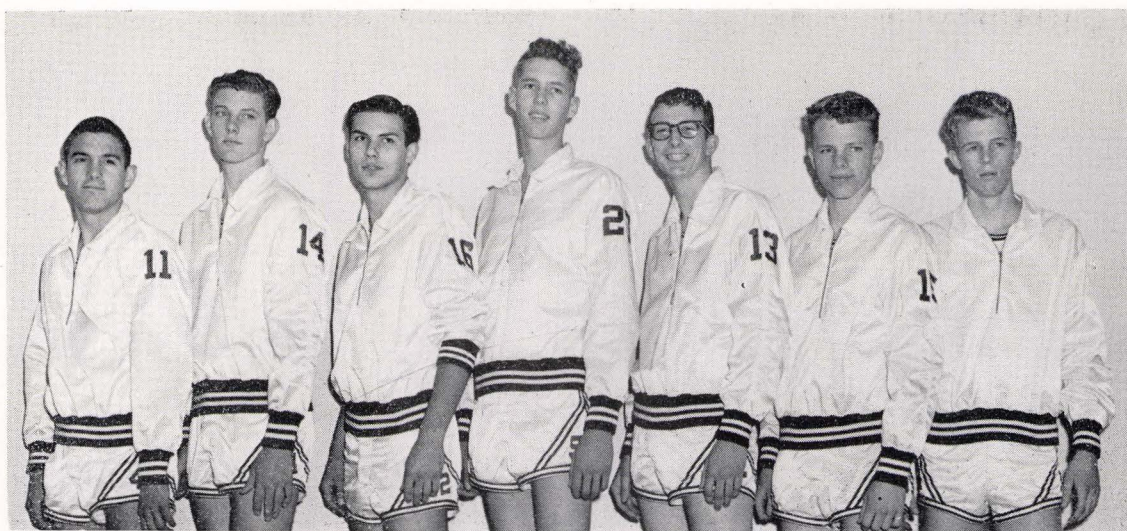


MIKE SHIPLEY



JOHN LIVIE

Name	Ht.	Class
Dennis Ragar	6-2	12
John Dray	6-3	12
Rush Putnam	5-11	12
	5-9	11



JV BASKETBALL (left to right): Gene Bino, Dave Schauer, Roy Burchell, Ken Kram, Jerry Leahy, Bob Rusk, Steve Trenam.

MR. GEORGE GILLMORE
Varsity Coach

JV Basketball

The JV basketball team, led by rebounder Rusk, and top scorer Trenam, finished with a comparatively successful season. Coming out with five wins and as many losses, Coach Gillmore termed the effort "good experience." The boys all worked hard and those who go on to play next year will find they will profit from this experience.

"B" Basketball

The "B" basketball team won the championship for the second consecutive year and was also credited with having the longest winning streak in the history of P.H.S.—twenty games.

The team's defense was as good as their offense; they held their opponents to a 25-point a game average in nineteen games. They had a season's average of 45 points per game for themselves, while hitting a 51% average on the free throw line. To sum it up, it is quite obvious that the "B's" had a very successful season.

"B" BASKETBALL. Front (left to right): Jim Pacciorini, Dennis Fujita, Harold Stice, Jim Phillips, Ken Good, Mike Opsomer. Back: Dave Mahrt, Jim Porter, Keith Goldstein, Brad Evans, Ray Jacobsen, Pete Golis, Mike Wooley, Bill Rusk.



MR. WILLIAM THORSEN
"B" Coach

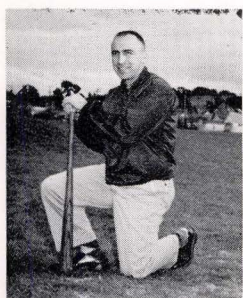




Front (left to right): Bill Georgeson, manager; Harold Mazza, Gary Petersen, Dennis Chappelle, Bill Golson, Jim Phillips, Ed Dangers, Bill Symons. Back: John Olander, Bill Schmidt, Ken Otani, Bill Johnson, Malcolm Stewart, Ross Leask, Ken Nommsen, Bob Rusk, Paul Stowring, manager.

BASEBALL

With several sophomores breaking into the first team squad and giving the returning lettermen a run for their money, our 1960 baseball team went into action. The club was good, although the season record might not agree, since we lost game after game by just one point. A couple of highlights of the season came in beating Vallejo 5-4 and Jefferson 9-1.



MR. RALPH AZEVEDO
Coach

ANOTHER HIT!



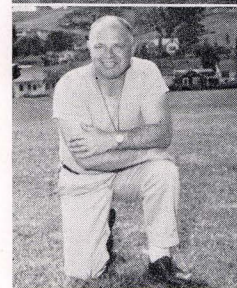
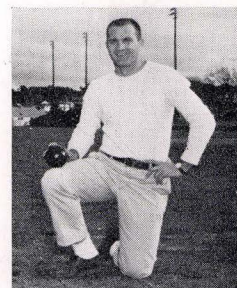
IS HE SAFE?





Front (left to right): John Imoto, Jeffery Millerick, Gene Bino, Eugene Corzine, Dale Cannon, Gordon Augustine, Dave Schauer. Second row: Al Milham, Roger Witsch, Pat Peebles, Floyd Volker, Ron Cromwell, Ron Siebe, Gilbert Scovill, Ken Good. Third row: Dennis Ragar, Bob Phillips, Rafael Rivera, Glenn Wellman, Ray Raffo, Ken Kram, Douglas Brock, Bob Butler, Paul Nielsen, Carl Collard, Bob Fender, manager.

MR. FRED BROCK
Track Coach



MR. WILLIAM ABBEY
Golf Coach

TRACK

The track team, with many returnees from last year, held high hopes of bringing in the honors this year in the N.B.L. I. They were led by such tracksters as Ray Raffo, Roy Burchell, Roger Witsch, and Pat Peebles. The B's, though small in number, proved large in quality. They were led by returnee Clark Matthiessen and sophomore Ken Good.

GOLF

(Left to right): Tom Baker, Ken Bianchini, Jim Maestretti, Don MacKenzie, Bill Young, Alan Scott, Richard Williams.



Led by three-year lettermen Ken Bianchini and Don MacKenzie, the 1960 edition of the Trojan golf team met with fair success. Aided by Alan Scott, Tom Baker, Jim Maestretti, Bill Young, and Rick Williams, the team came through with about a fifty-fifty won-loss record.



MR. HAROLD JANNEY
Swimming Coach



MR. LEONARD HEINZ
Tennis Coach

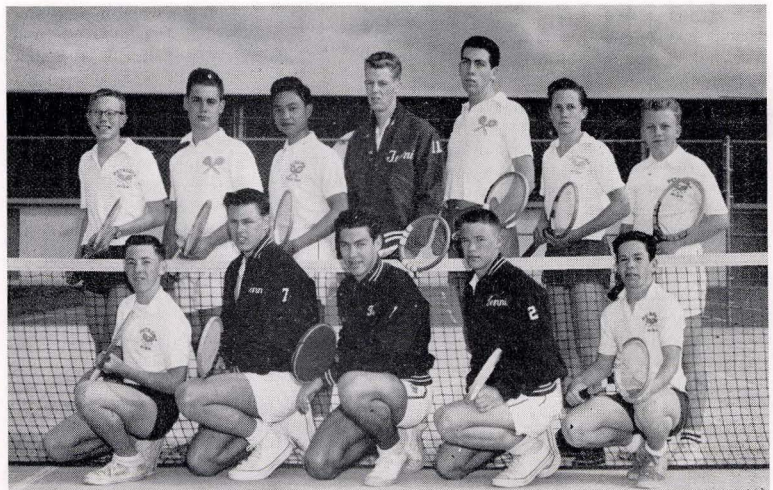
Front row (left to right): Gary McGinnis, Jim Laugesen, Dave Luce, Frank Girard, Richard Mackey, Bill Empey, Bob Potts, Larry Baker, Jerry Smith. Second row: Mike Turney, John Northrup, Bob Schneider, Steve Rossotti, Dan Gordon, Don Millerick, George Martin, Bob Potter, Jack Agius. Third row: Bill Larsen, Alan Mahoney, Paul Martin, Steve Dorenfeld.

SWIMMING

The swimming team began the 1960 season with only six returnees. The main problem was rebuilding. Frank Girard, Alan Mahoney, Steve Dorenfeld, Paul Martin, and Rich Mackey paced the team, which had a comparatively successful season. Senior Dennis Chappelle greatly strengthened Petaluma's diving club, along with Dave Luce and Bob Schneider.

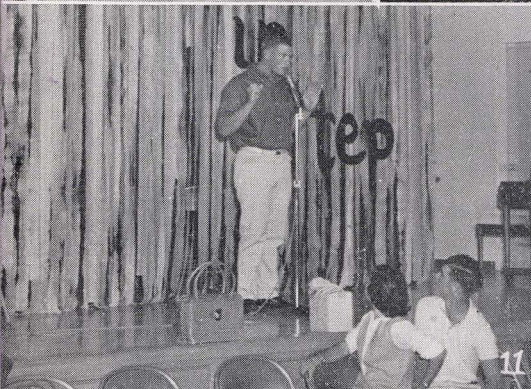
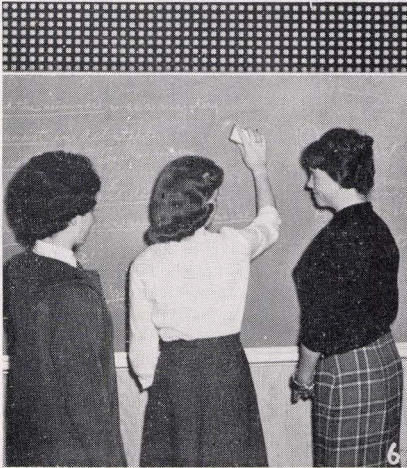
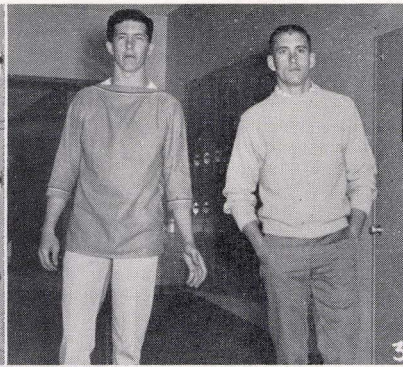
TENNIS

Front row (left to right): Harry Scoles, Bob Maack, Mel Ruiz, Rich Whalley, Darrell Rogan. Back: Winton Baker, John Lucchesi, John Chan, Steve Trenam, Rush Putnam, Alan Kushn, Mark Hayden.



Petaluma High School's varsity tennis team posed themselves as a notable threat for the league championship this year. Stabilized with four returning lettermen, the Trojan netmen pulled upsets over Analy, St. Helena, and Napa. Most of the team will be returning next year with more experience to bolster the chances for a pennant.

THIS WAS THE YEAR...



1—Desert boots, tennis shoes, foggies, squash heels. 2—Short skirts and classic white blouses. 3—Dobie shirts, bulky sweaters, and pegged pants. 4—. . . The Tramp Rage. 5—Huge purses. 6—Hairdos: the bubble, classic long, all type rolls. 7—The beatniks invaded us. 8—Napa was hung (before the game). 9—The hall monitors made us sign our lives away. 10—Senior sweaters and jackets, white skirts. 11—The seniors took the first successful step. 12—Bulky sweaters (all types). 13—The Trojan horse came to P.H.S.

SALES





STONE'S of PETALUMA

You Can Be Sure You'll Find It at Stone's

172 PETALUMA BLVD. NORTH

Home, Sweet Home!



"Insure With Assurance"

LEPORI-OVERTON AGENCIES

August Lepori - Albert Overton - Vern Jensen

REAL ESTATE—INSURANCE

Petaluma's Leading Agency

30 Washington Street

POrter 2-7321

"Yes, we insure teeth!"



PETALUMA GROCERY

Where Your Dollar Goes Further

COMPLETE FOOD MARKET

Meats—Vegetables—Fruits—Groceries

605 Petaluma Blvd. North

POrter 2-9480

Mama's little helpers!

REX HARDWARE

313 B STREET

POrter 2-7355

"Dennis, the eggs are burning!"



Carithers

Western and Kentucky

POrter 2-6656

Girls Are Wearing
KORET of CALIFORNIA
Go-Togethers

Ours Exclusively at Carithers

"Summertime!"

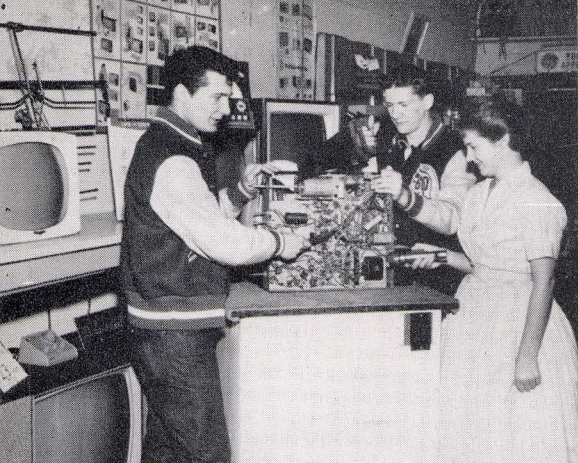


↑
"Say hay!"

PETALUMA HAY MARKET

2600 PETALUMA BLVD. NORTH

POrter 2-8491



LEONARD'S TV

Leonard Allred
PACKARD-BELL
Sales and Service
Small Appliance
Repair

135 Kentucky Street
POrter 2-4833

"Searchin'!"



OLAETA'S TOY CHEST 7 WESTERN AVE.

Novelties, Jokes
Birthday Favors
Lots of "Pretties" for
the Children

(Combined with
Petaluma Shoe Repair)

Pets Unlimited!



WESTERTERP BROS.

RAMBLER
INTERNATIONAL

Congratulations
to the
Class of 1960

"Little Nash Rambler"



CHET DICKSON CO.

DODGE DART

301 Petaluma Blvd. No.
POrter 2-6684

"Have car, will travel!"

FASHION LANE

Madge Moore

Ready-to-Wear Dress Shop

19 Kentucky Street

POrter 2-4845

HEROLD DRUG CO.

Dependable Druggists

Kentucky and Washington Sts.

Petaluma

COMBS FROZEN FOOD LOCKERS

322 Western Avenue

COMBS APPLIANCE SALES

136 Kentucky Street

W. Perry, Jr.

D. Paris

O'NEILL DRUG CO.

2 Entrances: 9 Petaluma Blvd. No. and 21 Fourth St.

Phone POrter 2-4508

Nite POrter 2-2177

VOLPI GROCERY

Imported and Domestic Groceries
FRUITS and VEGETABLES

Washington and Keller Streets

JACOBSEN & SONS

LIVESTOCK DEALERS

1321 Chapman Lane

Petaluma

A & B MARKET

628 East Washington St.

POrter 2-9352

GOREE CLEANERS

27 Western Ave.

800 Petaluma Blvd. North

BOUTZ RADIO & TELEVISION

Sales and Service

224 Washington St.

POrter 2-2903

ROSE E. PIEZZI — FLORIST

New Hotel Petaluma Building
Petaluma

THE SNACK BAR

330 East D Street

POrter 3-0122

KING'S BEAUTY SALON

Specialists in Hair Styling

POrter 3-1541

SARRO'S SURPLUS SALES

Sporting Goods — Clothing

WE RENT CAMPING EQUIPMENT

Corner Washington and Kentucky Streets

CLINE FURNITURE COMPANY

Complete Home Furnishings

Western Ave. and Keller St.

POrter 2-2870

THE GABRIEL BEAUTY SALON

226 Washington Street

POrter 2-2696

KEN'S BODY SHOP

132 Keller Street

POrter 2-8278

TUTTLE DRUG COMPANY

(The REXALL Store)
Harold Erickson

113 Petaluma Blvd. No.
POrter 2-7371

Are you sure it's just
a cold?



HAKON HANSEN PAINTING SHOP

POrter 2-6421
146 Kentucky Street

Do it yourself!



NIELSEN FURNITURE CO.

Furniture - Draperies
Carpet - Lamps
Gifts

145-149 Kentucky St.
POrter 2-4515

Just what I wanted!



ASCHERMAN'S FOOD MARKET

CAL and HAROLD
ASCHERMAN

12 Kentucky Street
POrter 2-6637

Petaluma, California





SANDERSON MOTOR CO.



13 PETALUMA BLVD. SOUTH
Phone POrter 2-6671

Some day . . . !



PETALUMA PRINTING CO.

A PRINTING SERVICE
THAT REALLY SERVES

212 SECOND STREET
POrter 2-4836



Oh boy, what a line!



CADILLAC - CHEVROLET - OLDSMOBILE

Sold and Serviced for Over 30 Years

PRICE - ROCHE MOTORS

Sales and Service

PARTS and ACCESSORIES

424 Petaluma Blvd. North

POrter 2-4585

"I dec'are, there's another new Corvair!"

ROGER WILCO

PETALUMA'S FINEST
SUPER-MARKET

621 East Washington Street

Charge it, please!



LOMBARDI'S THE STORE FOR MEN and YOUNG MEN

Casual, Dress and Work Clothing
Authentic Western Wear for the Entire Family

For our next necktie party!



WESTERN AVENUE MARKET

Baccala & Sons

QUALITY GROCERIES
FREE DELIVERY

400 Western Avenue

POrter 2-7325

For me!





Chrysler - Valiant - Plymouth - Willys
Sales and Service

JIM ROSE
General Automotive Repairing

POrter 2-2712
115 Petaluma Blvd. South
Petaluma

"Mr. Lucky!"



BOITANO & MEADOWS
WHITE TRUCK SALES

1 BRIDGE STREET
POrter 2-7394

A little cheesecake, please!



Nothing but the best!

McLAUGHLIN JEWELERS

McLaughlin's Registry Service Is An Aid to Friends and Family in Their Gift Selections
Sterling Silver by LUNT, WALLACE, GORHAM, HEIRLOOM, TOWLE, REED & BARTON exclusively ours



PETALUMA
CO-OPERATIVE
CREAMERY

Home of

CLOVER
BRAND

DAIRY
PRODUCTS

Make ours MILK!



BARLAS FEED CO.

430 BAILEY AVENUE
POrter 2-9605



The HARMONY MUSIC STORE, Inc.
Musicians' Headquarters for Northern California

TELEVISION — Sales and Service
Instruments—Pianos—All Late Record Hits

43 Petaluma Blvd. North

POrter 3-1996

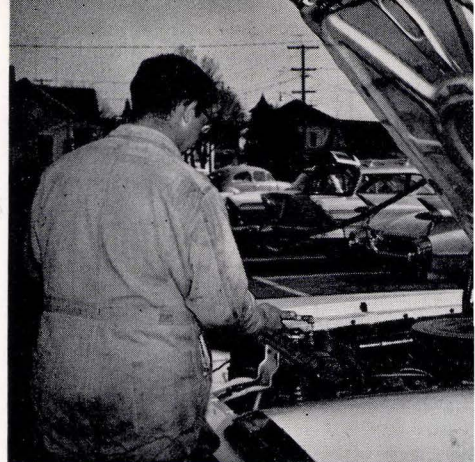
Opening Night at Carnegie Hall!





**PETALUMA
SERVICE STATION
ASSOCIATION, INC.**

*Pledged to
Better Business*



PETE'S SIGNAL SERVICE

1510 Bodega Avenue

MAGGIORA'S MOBIL SERVICE

Western Avenue and Keller Street

RICHFIELD OF STRAUBVILLE

Bodega Avenue and Lohrman Lane

HOOPER'S SIGNAL SERVICE

430 Washington Street

PARK RICHFIELD SERVICE

Western Avenue and Howard Street

BOB ACORNE'S UNION OIL STATION

Petaluma Blvd. South and D Street

HEYWARD'S FLYING "A" SERVICE

Fourth and B Streets

MARTY'S TEXACO SERVICE STATION

Petaluma Blvd. North and West Street

GILARDI'S SEASIDE STATION

100 Petaluma Blvd. South

ERNIE'S FLYING "A" SERVICE

Washington and Liberty Streets

HOUSTON'S SIGNAL SERVICE

419 Petaluma Blvd. South

ED GERRITS' RICHFIELD

Petaluma Blvd. North and Kent Street

RICCI'S UNION SERVICE

Wilson and East D Streets

ERNIE SMITH'S CHEVRON SERVICE

Petaluma Blvd. South and D Street

RUEGGE'S MOBIL SERVICE

East Washington and Vallejo Streets

KELLY'S RICHFIELD

Petaluma Blvd. South and F Street

DUNAWAY AUTO PARTS

JACK T. DUNAWAY, Prop.

COMPLETE MACHINE SHOP SERVICE

271 Petaluma Blvd. North
Petaluma

Don't they look busy!

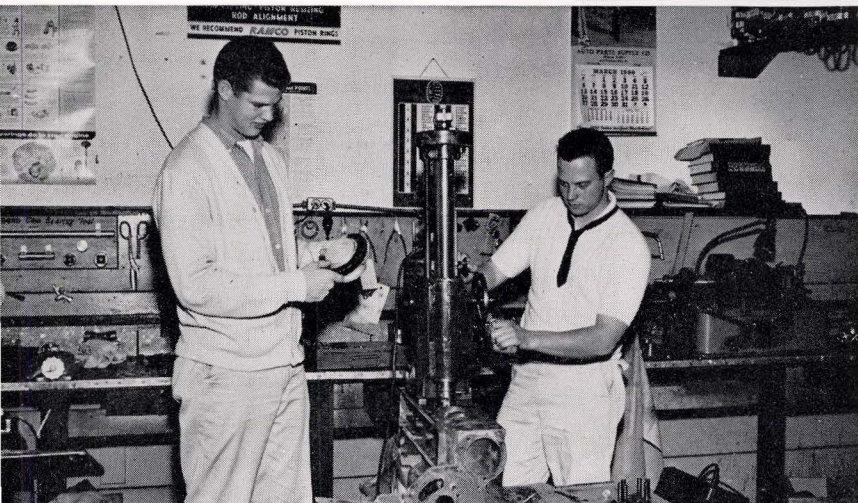


Congratulations to the Class of 1960!

LERER AUTO PARTS

19 East Washington Street

Please don't shoot!



AUTO PARTS SUPPLY CO.

REPLACEMENT PARTS
For Cars, Trucks and Tractors

218 Petaluma Blvd. North
POrter 2-4551

Put them together and you'll have a car!



PRESTON
AUTOMOTIVE CENTER
Formerly Pedranti's Automotive Service

Automotive Parts and Service
Automotive Electricians
Go-Kart and Small Engine Specialists

326 Petaluma Blvd. North

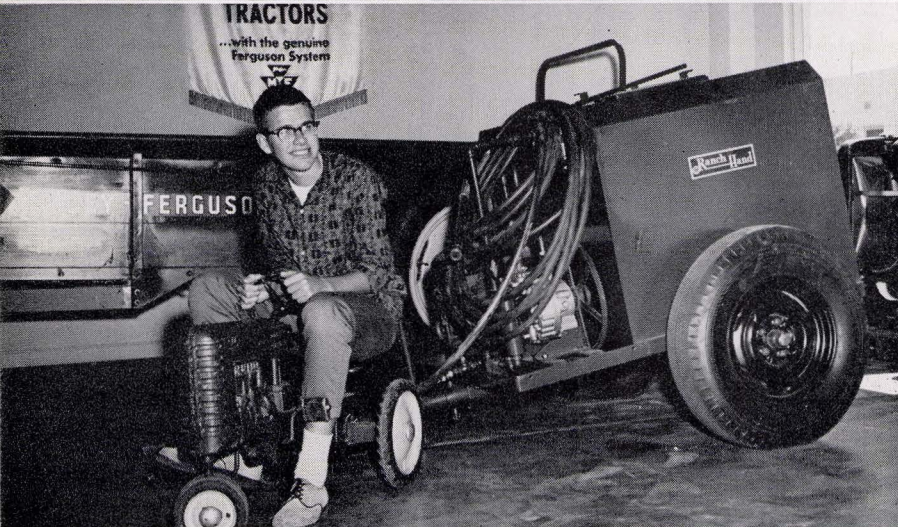
POrter 2-7391



CONGRATULATIONS
AND BEST WISHES
CLASS OF '60

HEROLD MAHONEY

Don't just stand there; do something!



WOLDEMAR TRACTOR CO.

Holger C. Woldemar, Prop.

Massey-Ferguson

Parma Boxes — Freeman Balers

Second and C Streets
POrter 3-1966

It's just not your style!

BRAD DATSON

STATE FARM INSURANCE

"The Careful Driver Company"

POrter 2-6628 9:00 to 5:30 127 Keller St.
Petaluma

MAX W. FLOHR

General Insurance — Real Estate

25 Washington Street, Petaluma
Bus. POrter 2-8283 Res. POrter 2-6343

BOB ARMBRUSTER

STATE FARM INSURANCE

Auto—Life—Fire

POrter 2-6628 9:00 to 5:30 127 Keller St.
Petaluma

WALTER J. MINOGUE

New York Life Insurance Company

132 Kentucky Street

Bus. POrter 2-2997 Res. POrter 2-9301

AMERICAN TRUST COMPANY

PETALUMA OFFICE

J. E. Gallagher, Manager

BANK OF AMERICA N. T. & S. A.

SONOMA COUNTY BRANCH

Frank Toner, Manager

YES, WE PEG PANTS!

Remember, There Is a Difference in Shoe Repairing

PETALUMA SHOE REPAIR

14 Years in Petaluma

Herman & Brute Custom-built School
and Work Shoes

7 WESTERN AVE. POrter 2-8464

New pair of shoes?



ERNIE WATERS UNION OIL OF CALIFORNIA

P. O. Box 870—Petaluma
Office POrter 2-7328 Res. POrter 3-0013



FIRST NATIONAL BANK in SAN RAFAEL

Wm. P. Murray, Jr., Manager

BANK OF AMERICA N. T. & S. A. PETALUMA BRANCH

Frank Catelli, Manager

RANCHES — HOMES — BUSINESSES



113 Western Avenue

POrter 2-2758

Real Estate — Who?

A. W. BAKER—Of Course

134 Petaluma Blvd. North

POrter 2-6825

PETALUMA AUTO BODY SHOP

Auto Painting - Upholstery - Body Repairs

704 Petaluma Blvd. North

POrter 2-6417

RODGERS' AUTO BODY SHOP

Painting - Glass - General Auto Body Repairs

847 Petaluma Blvd. North

POrter 2-7300



ASK FOR A BRODY BIRD

Home Grown ...
Home Processed
for the
Finest Flavor

REIF & BRODY, INC.
POULTRY PROCESSORS

90 Hopper Street

POrter 3-1941

Expert on chickens!



REDWOOD DAIRY DRIVE-IN

MILK FRESH FROM COW TO YOU
14¢ a Gallon Below the Regular Price

PETALUMA BLVD. NORTH
Across from Gossage Ave.

A quart a day . . . !



POEHLMANN HATCHERY

Hatchers and Distributors of



620 PETALUMA BLVD. NORTH
POrter 2-6625

Ready by next Thanksgiving!

CONGRATULATIONS TO THE CLASS OF 1960

DR. JOHN L. RICHARDS
DENTIST
184 Keller Street

WILLIAM J. PATTERSON, D.D.S.
152 Keller Street

DR. M. L. NEILSEN
PHYSICIAN and SURGEON
125 Washington Street

DR. F. C. CRAWFORD
DENTIST
123 Washington Street

DR. WAYNE E. MUSSER
OPTOMETRIST — CONTACT LENSES
117 Washington Street

HAMZA I. MUNIB, M.D.
SURGEON
411 B Street

DR. JAMES G. ANDERSON
PHYSICIAN and SURGEON
47 Sixth Street

ANGELO J. LEONI, M.D.
GEORGE W. FLYNN, M.D.
160 Keller Street

G. W. LANE — G. W. LANE, JR.
DENTISTS

GLENN W. MacKENZIE
PUBLIC ACCOUNTANT
129 Keller Street

ALLAN H. SEAMAN
PUBLIC ACCOUNTANT
111 Washington Street

DR. WILLIAM C. LEE
OPTOMETRIST
129 Keller Street

DR. FRANK R. FOSTER
SURGICAL PODIATRIST
129 Keller Street

DR. GORDON F. ORNELLES
DENTIST
411 B Street

DR. CLAUDE J. DURHAM
CHIROPRACTOR
32 Liberty Street

DR. SAMUEL BROWN
DENTAL SURGEON
10 West El Rose Drive

JOHN J. MOHRMAN, M.D.
DAVID A. SISLER, M.D.
24 Western Avenue

M. L. BALLARD — T. L. LANE
ORTHODONTISTS

SOUTH CITY MARKET

301 Mountain View Avenue

POrter 2-7675

CAULFIELD'S MARKET

426-428 East Washington

GROCERIES and MEAT
L. Lauritzen, Prop. P. Zengler, Prop.

M & G AUTO BODY and GLASS

Auto Painting — Glass Installed

426 Petaluma Blvd. North

POrter 2-2791

H & S SERVICE GARAGE

POrter 2-7577

209 C Street

Petaluma

JOHN & BOB'S SPORTING GOODS

15 Western Avenue

Compliments of

SCHOENINGH'S STATIONERY

141 Kentucky Street

EDWARD'S BEAUTY SALON

139 Kentucky Street

POrter 2-7453

WESTERN AUTO Associate Store

The Family Store

Ralph Kiefer — Home-Owned — Lloyd A. Warner

120 Petaluma Blvd. North

POrter 2-2884

HUGH & ART'S GARAGE and SPEED SHOP

Hugh Purdy Art Dias

We Specialize in Stock
and Custom Engines

807 Petaluma Blvd. So.
POrter 2-6276

"Speed Demons"



HAKON HANSEN PAINT SHOP

Exclusive Dealer
SHERWIN-WILLIAMS
Products

"Buy Paint From
A Painter"

146 Kentucky Street
POrter 2-6421

Planning to paint an
elephant?



Wm. A. Naye
Paul R. Elmore

ANTLERS PHARMACY

Kentucky Street and
Western Avenue

The Staff



DeLUXE CLEANERS and DYERS

For Particular People

DeLuxe Serves With
Cash and Carry

145 Keller Street
POrter 2-7853

"Cash or charge?"



WEIS FLORAL SHOP

Marie Morgantini

James Soldati

Flowers For All Occasions

311 Washington Street

POrter 2-2413

DREES FLORIST

Flowers—Corsages

207 Western Avenue

POrter 2-7574

Congratulations to the Class of 1960!

MONTICELLI'S SCHOOL STORE

CHANDLER DAIRY

Ellery and Bea Moore

Homemade Type Ice Cream

505 Petaluma Blvd. North

POrter 2-9497

MILLER'S CANDY and FOUNTAIN

15 Petaluma Blvd. North

POrter 3-0813

P. D. Q.

Congratulations to the Class of 1960
from the

RANCH BEAUTY BAR

POrter 2-6714

BUNDESEN'S SEED and
GARDEN SUPPLIES
PET FOODS and SUPPLIES

9 Fourth Street

POrter 2-6670

COCA-COLA BOTTLING CO.

of Petaluma and Sonoma

Join and Listen to
Your Hi-Fi Club

2nd and G Streets
POrter 2-7364

"... so refreshing!"



U. S. BAKERY

"Buy the Best—We Do"

Cakes For All Occasions
Fresh Bread and Rolls
Pies and Pastries

141 Petaluma Blvd. No.
POrter 2-2583

Watch out for those
calories!



HOLM TRACTOR and EQUIPMENT CO.

Ross-Holm Milking
Method

Highest Quality Dairy
Supplies

John Deere Tractor
and Farm Equipment
DeLaval Milkers

"Down on the farm"

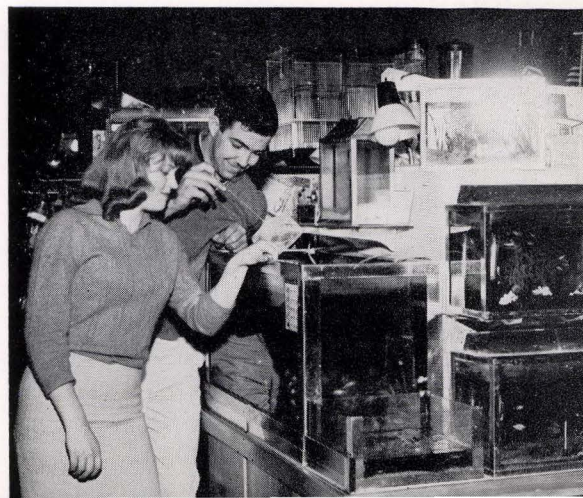


THE SPOUSE-REITZ CO.

JAMES L. GOSS, JR.
Manager

120 Kentucky Street
POrter 3-1712

"The Big Fisherman"



BOULEVARD BOWL

Petaluma's Entertainment Center

CONGRATULATIONS
TO THE CLASS OF 1960

1100 Petaluma Blvd. South

POrter 2-4581

"Watch those gutter balls!"



PARENT FUNERAL CHAPEL

•

ARTHUR W. PARENT

WINCHELL'S DONUT HOUSE

22 VARIETIES

Monday thru Saturday 5 a.m. to 10 p.m.
Sundays 5 a.m. to 9 p.m.

SORENSEN FUNERAL HOME

•

OSCAR C. POPE
ROBERT W. POPE



LUND'S DRIVE-IN BOULEVARD BOWL COFFEE SHOP

•

"THE PLACES WHERE
GOOD FRIENDS MEET"

"Ye Olde Hangout"

KEIG'S SHOE STORE

Shoes for the Entire Family

115 Petaluma Blvd. North

PORter 2-2161

RICHEY JEWELERS

"Gems of Gold to Have and Hold"

165 Petaluma Blvd. North

PORter 2-8877

CORONA FEED MILLS

Petaluma

320 Corona Road

Phone PORter 2-6668

LAKEVILLE FOUNTAIN

ROSE'S Ice Cream Novelties For Any Occasion

Our Customers—Our Most Important Asset

135 Petaluma Blvd. South

PORter 2-3126



With Best Wishes
For Your Future

GREEN MILL INN

Fine Foods
Served Daily

10201 Redwood Hwy N.
Phone SWift 5-4303

Nothing like a little
service!



In Petaluma . . . It's
MATTEI BROS.
for the latest and best in
College and University
Clothes for Young Men
of All Ages

MATTEI BROS.
Clothes for Men and
Young Men Since 1907

All set for the Prom?



DAMON and OSTER Barber Shop

Advertising with the
ENTERPRISE since 1887

Haircutting By
Appointment

32 Petaluma Blvd. North
PORter 2-9157

Don't sneeze now, Dale!



A & W ROOT BEER DRIVE-IN

501 East Washington

The gang has a tall,
cool one!

G & K MOTORS, INC. KLEMENOK G.M.C.

339 Petaluma Blvd. North

PORter 2-6662

ELIOT'S CANDYLAND Homemade Candy — Fountain

122 Washington Street

PORter 2-8072

Compliments of MADDALENA REFRIGERATION

Petaluma, California

Furniture—Rugs—Mattresses

"BEFORE YOU BUY...
SEE FURNITURE GUY"

23 Petaluma Blvd. North



UNCLE ED'S TOY CIRCUS PETALUMA'S ONLY EXCLUSIVE TOY STORE

Featuring the Top Lines of Toys, Games and
Hobbies for the Entire Family

114 Petaluma Blvd. North

POrter 2-7295

Aren't they darling!



FOSTER'S

C. CARDOZA, Mgr.

MALTS - SHAKES BURGERS - FRIES
CONES - HOT DOGS

Fourth and C Streets

Compliments of

BARBER SIGN CO. A COMPLETE SIGN SERVICE

412 Madison Street

Petaluma

R. O. SHELLING INC.

Rudolph O. Shelling

GRAIN and FEED

Petaluma Blvd. North

Bus. POrter 2-2779

Res. POrter 2-4392



OFFUTT'S

BREAKFAST—LUNCH—DINNER
Served at All Hours

South City Limits, Petaluma

POrter 2-7650

Compliments of

PETALUMA MILLING COMPANY

242 Petaluma Blvd. North

POrter 2-7020

ASH BAG COMPANY

We Buy and Sell
COTTON and
BURLAP BAGS

East D and Weller Sts.

POrter 2-9613

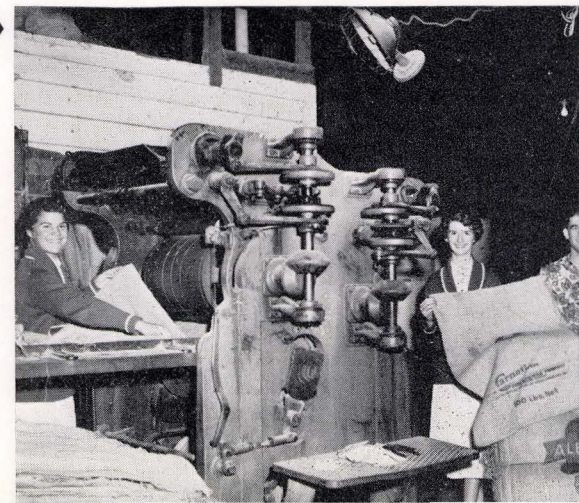
SOUTHWICK'S SHOE STORE

Headquarters for SPALDINGS

155 Petaluma Blvd. North

POrter 2-4101

Don't work too hard!



Tomasini's
THE HOUSE THAT SERVICE BUILT
HARDWARE COMPANY OF PETALUMA

CONGRATULATIONS!

140 Keller Street

POrter 2-2721

Shall we go for a stroll?



DENTON'S APPAREL
FOR WOMEN AND CHILDREN

TEENA PAIGE and VICKY VAUGHN
FASHIONS

O. W. Denton

127 Kentucky Street

Girls, remember your budget!



**H & G
EQUIPMENT
CO.**

Authorized
OLIVER Dealer

Gravenstein Highway
and Alden Avenue

Greetings from

SCHOENINGH'S FAIR
EVERYTHING FOR THE HOME

Special Attention to the Prospective Bride

153 Kentucky Street

POrter 2-6413

PETALUMA FRENCH BAKERY

Others Claim Quality—We Guarantee It
We Make the Original French Bread
Also Tendercrust White

444 Petaluma Blvd. North

POrter 2-9346



**EMPIRE PEST
CONTROL
EXTERMINATORS**

Andrew J. Hogya

Complete PEST
CONTROL Service
Termite Control

243 Howard St.
POrter 2-8345

They'll kill 'em!

In Downtown Petaluma—
CASA GRANDE MOTEL
THE CALLAWAYS

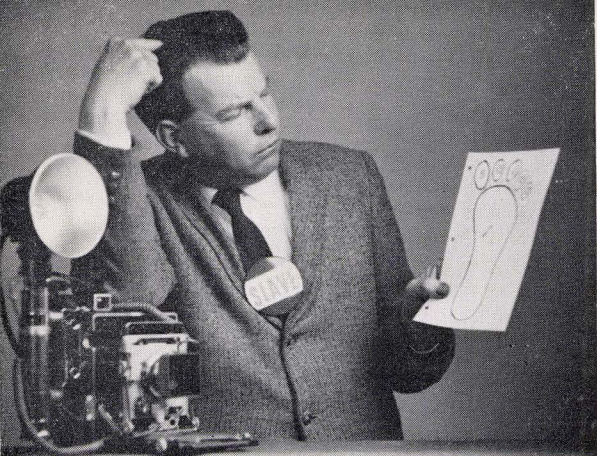
307 Petaluma Blvd. South

POrter 2-8881

EGG BASKET RESTAURANT
We Think You'll Agree That We Serve the Best

154 Petaluma Blvd. North

POrter 2-7201



DECKERS STUDIO

Ken & Anna Grimm

Individual and Group
Portraits

Candid and Formal
Wedding — Copies



See Bill Hughes at
MILNER'S
SPORTING GOODS
and BOAT ANNEX

Your Headquarters for
All Outdoor
Sports Equipment

145 Kentucky Street
POrter 2-6991

Guaranteed to work!



TERNES
DRIVE-IN OFFICE
EQUIPMENT

Exclusive Distributors for
Royal Standard and
Electric Typewriters

110 Liberty Street
POrter 2-9403

Efficiency plus!



LACE HOUSE LAUNDRY

Serving You Since 1915
Industrial and Linen
Supply Service

128 Liberty Street
POrter 3-1515

Satisfaction guaranteed!



COTATI

Cotati Is Right . . .

THE COTATIAN
A Friendly, Independent Newspaper

Phone SWift 5-4014

BUD'S BARBER SHOP
All Styles of Hair Cutting

Opposite Exchange Bank

COTATI PLAZA MARKET
(Formerly Ferrero's)

Plaza and West Cotati Ave.

SWift 5-4304

LIPTON'S IN COTATI
Ranch and Garden Supplies - Wearing Apparel
Gifts - Yarn - Sewing Notions

Free Knitting Instructions

SWift 5-4632

**STENLUND'S A-1
MEAT & FREEZER SERVICE**

8295 Redwood Hwy. and 996 Stony Point Road

CHARLES M. COLTRIN
Licensed Real Estate Broker

8204 Redwood Highway
Cor. Gravenstein and Stony Pt. Road

SWift 5-5222

SWift 5-5604



Merchants

For the College Site

MABEL'S FOUNTAIN

Breakfast and Lunch

LLOYD'S UNION SERVICE

SWift 5-9986 — Cotati

JENSEN'S IRON WORKS

Stanley C. Olsson

Welding & Blacksmithing - Steel Fabrication

"On the Plaza"

SWift 5-5313

OFFUTT'S HAY & GRAIN

Redwood Highway

SWift 5-5279

COTATI CRAFT & GIFT SHOP

Wood Fiber - Handicraft - Gifts

Newspaper Correspondent—Mrs. John Hahn

P.O. Box 99

SWift 5-4863

COTATI REALTY CO.

Since 1929

"Invest in Cotati—We Do"

Redwood Highway

SWift 5-4012

WELLER-HOPKINS FURNITURE CO.

Complete Home
Furnishings

Washington and Keller
Streets
POrter 2-6648

Finish the dishes yet,
Bob?

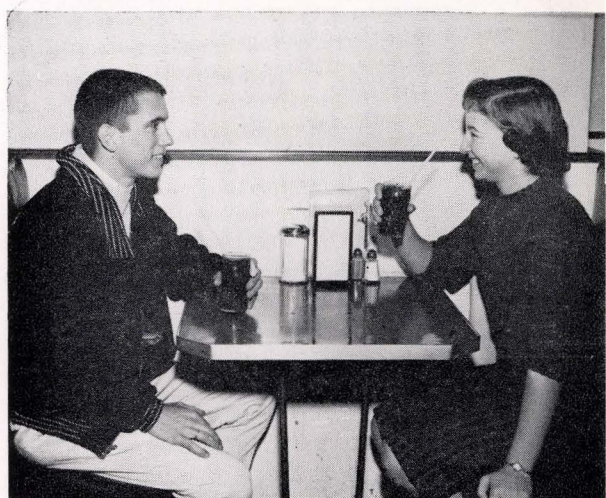


KING'S CREAMERY

Fountain Service
Borden's Ice Cream

157 Kentucky Street
POrter 2-7872

Separate checks, please!



NILES AUTOMOBILE CO.

Sales and Service

BUICK
STUDEBAKER
LARK

822 Petaluma Blvd. No.
POrter 2-7344

Can we borrow it?



THE CAMERA CORNER

Everything
Photographic

1 Petaluma Blvd. No.
POrter 2-4079

How are you doing,
Stan?





LINCH

LINCH

LINCH

LINCH JEWELRY

10 Western Avenue

Petaluma, California



PETALUMA ARGUS - COURIER

Serving the Petaluma Area
for Over 100 Years

Suppose it rains!

OTTO KRUSE'S PAINT STORE

Fuller Paints—Dunne Paint

PAINT — GLASS — WALLPAPER

16 Petaluma Blvd. South

PORter 3-1835

REDWOOD CLEANERS

KNITS CLEANED AND BLOCKED

Free Pick-up and Delivery Service

8 Petaluma Blvd. South

PORter 2-7662

SUIT and HARPER REALTY

305 Petaluma Blvd. So.

PORter 3-1924

Can we help you?



THE ROOST CLUB

extends its sincere

BEST WISHES TO THE CLASS OF 1960

"A Youth Center Program Dedicated to
the Youth of the Community"

We rule the Roost!



CONGRATULATIONS TO THE
CLASS OF 1960

from the

DRAMA CLUB

Stage fright!



FIGONE'S NURSERY

Bedding Plants — Shrubs — Garden Supplies
Bulbs — Trees — Insecticides

301 Wilson Street

POrter 2-8187

Who's got the green thumb?



HILL'S MILLS

G. P. McNEAR CO.
GOLDEN EAGLE MILLING CO.

Extend Best Wishes and Congratulations
to the Class of 1960

Loading up!

Best of luck
to a swell guy.
We had too much
of him?
Gary Carlson

Don't do too
much walkin in
the army.
Robert Barr

Gods
good
luck in the
future
Bob Mac ch

— Bt —
East of Luck.
Remember Mr.
Mice's Room.

Bob,
good luck
in every thing
you do.
Pam Shun

Best of Luck
to a good kid
Bill Gibbes

Lots of luck in
your future years
in the Navy.
Douglass Lock

Always a friend,
Sharon Saunders

Best of Luck
in the future
Mamey
Cannon

Bob
to a real nice
kid. I just stay
the way you are
now and you
will be the
greatest
Bill
family

Bob.
Best of luck
to a real good
guy Bill Cassine

Roy Noss

Bob -
After an ordeal
like this of practicing
for graduation I guess
we're all ready to beat the camel
wound. So work hard & keep your
boots shined & have fun.
Nancy Johnson

have from
Nancy Johnson

The body
last 20
real ones
Red. stage from
from the summer,
Little growth

Box.
100 in the nest
years.
He ~~had~~
~~was~~

Dr. J. C. Smith
Dr. J. C. Smith
Dr. J. C. Smith

Dear Bob,

You're a great
guy, Bob and you'll
go a long way if ^{you} only
complete half of your
plans. I had a
wonderful time at the
Senior Ball. Thanks
again.

Best Wishes fellow Graduate.

Pat Lombardi

Class Song - 1960

Handwritten musical score for a class song. The score is written on ten staves, each with a treble clef and a key signature of two flats (B-flat and E-flat). The time signature is 4/4. The lyrics are written below the notes. The song ends with a double bar line on the tenth staff, followed by two empty staves.

Dear Pet-a-lu-ma High School, The hour has now drawn
nigh; The Class of Nine-teen Six-ty, Must bid you all good-
bye. The Foot-steps of the Fu-ture, Are sound-ing in the
halls, Our path so plain be-fore us, Leads for-ward-for-tune
calls. But yet may we re-mem-ber The days we've spent with
you; The fun we've had to-geth-er, The ma-n-y friend-ships
too. For Pet-a-lu-ma High School, Our hearts e'er will
swell. Fare-well Alma Ma-ter; To you, fare-well

